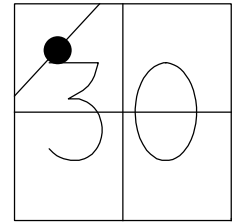


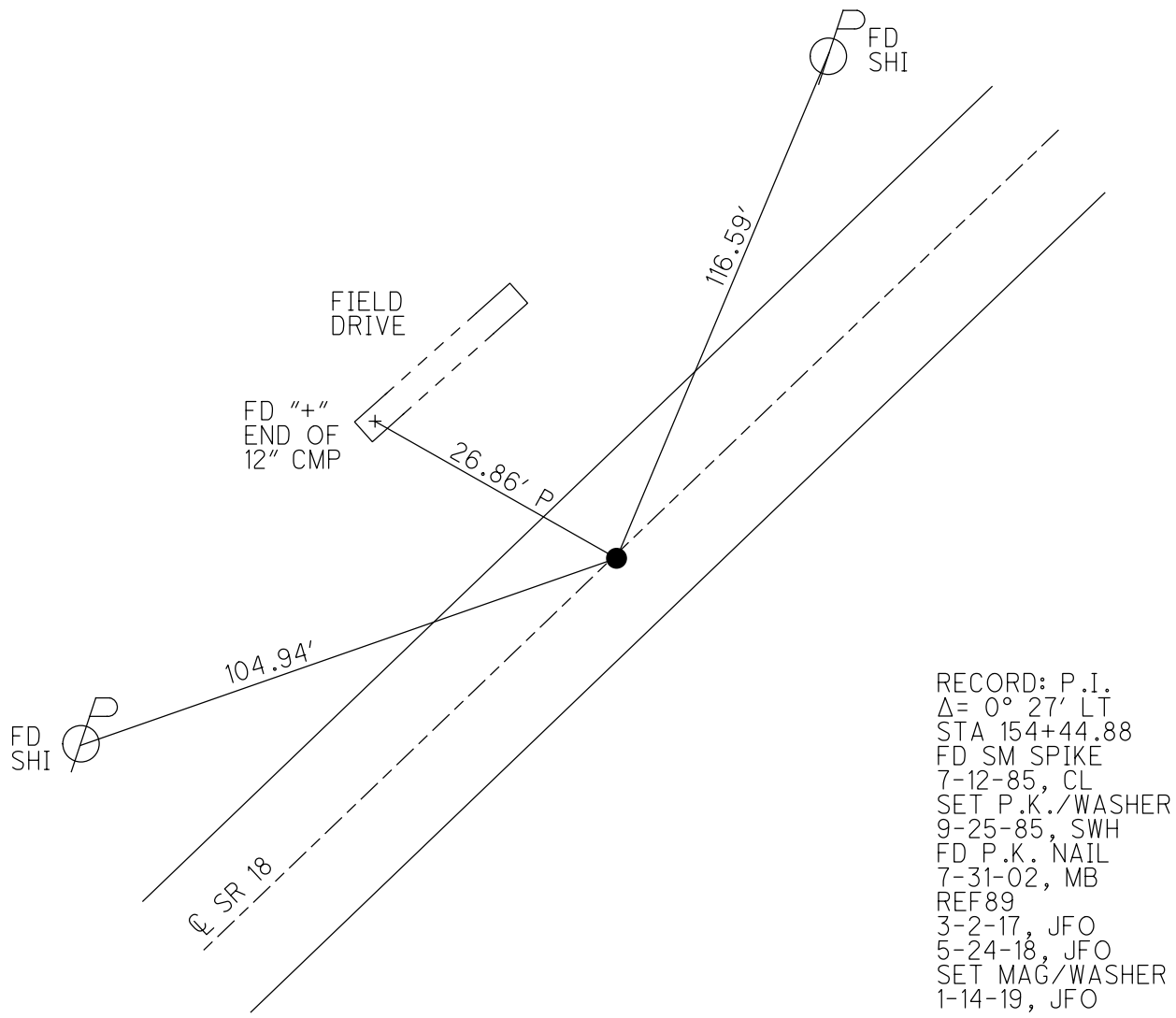
O.D.O.T. DISTRICT 2 SURVEY OFFICE (USE ONLY)

PERSONNEL _____ REFERENCE NO. 89 SHEET 22 OF 28
 NOTES RHOADES DATE 5-24-18 ROUTE SR 18
 H.C. O'DONNELL WEATHER SUNNY COUNTY SENECA
 R.C. TRENKA TEMP. 78° TOWNSHIP THOMPSON
 DWG BY JAMES PID 101281 SECTION 30
 T 3 N R 17 E

TYPE MONUMENT P.K. NAIL
 ON SURFACE - ~~BELOW~~ ON
 OFFSET 0.5' ~~LT~~ : RT
10.1' TO LT EDGE PAVEMENT
 STATION: 1523+86.95



HORIZ.DATUM: NAD83 2011 GEOID: NAVD88 2012A
 GRID: NORTHING: 557366.054 EASTING: 1844098.590



RECORD: P.I.
 $\Delta = 0^\circ 27' \text{ LT}$
 STA 154+44.88
 FD SM SPIKE
 7-12-85, CL
 SET P.K./WASHER
 9-25-85, SWH
 FD P.K. NAIL
 7-31-02, MB
 REF89
 3-2-17, JFO
 5-24-18, JFO
 SET MAG/WASHER
 1-14-19, JFO

O.D.O.T. DISTRICT 2 SURVEY OFFICE

PERSONNEL _____

REFERENCE NO. 89

SHEET _____ OF _____

NOTES Hoffman

H.C. Loehcke

R.C. BARNHISEL

DATE 7-12-85

WEATHER CLEAR

TEMP. 80°

ROUTE 18

COUNTY SENECA

TOWNSHIP THOMPSON

SECTION 30

T.3 N R.17 E

TYPE MONUMENT SMALL SPIKE

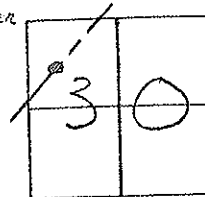
ON SURFACE ~~BELOW~~ YES

LEFT - C. PAV'T. - RIGHT YES

10.1 TO LT. EDGE PAVEMENT

S.L.M. 1528 + 17

Set Pk. / Washer
9-25-85 swk

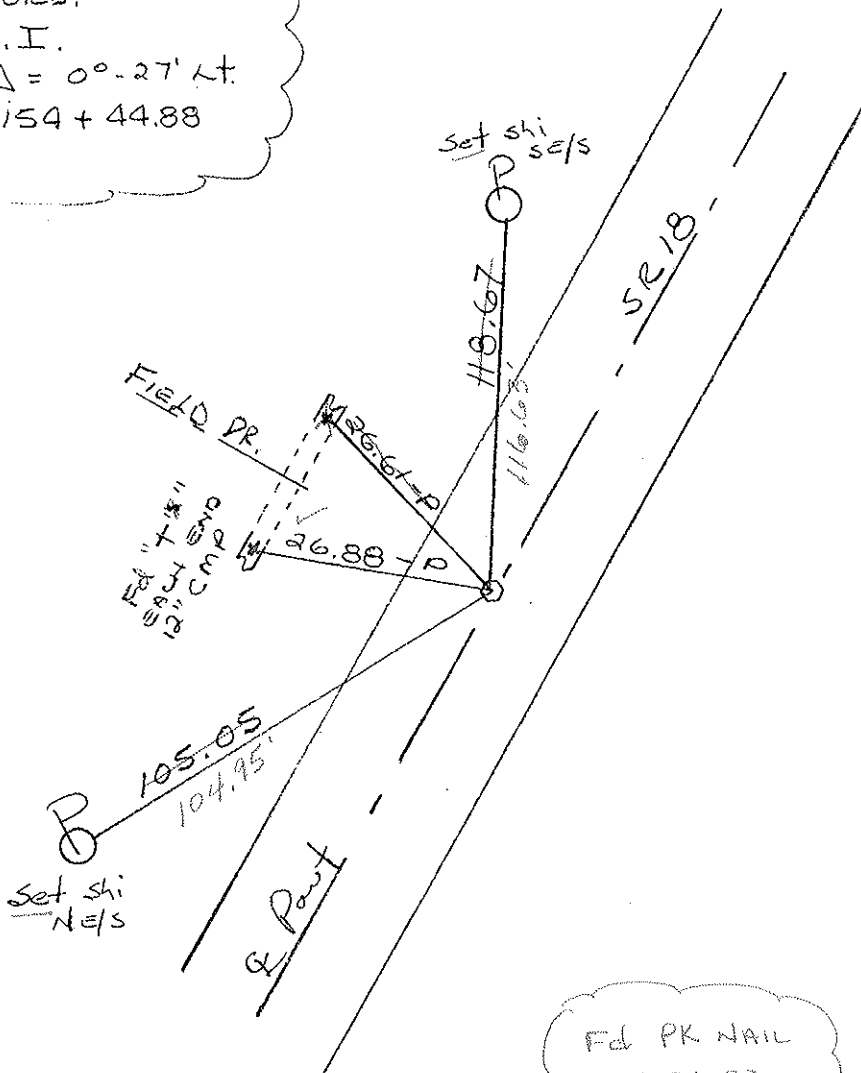


Records:

P.I.

$\Delta = 0^\circ - 27' \text{ Lt.}$

154 + 44.88



Fd PK NAIL
 7-31-02
 MFB

Preventive Maintenance
 Chip & Seal 2002
 Existing Point Uncovered
 Date 12-06-02

O.D.O.T. DISTRICT 2 SURVEY OFFICE

PERSONNEL

REFERENCE NO. 89

SHEET _____ OF _____

NOTES Hoffman

H.C. LOEHRKE

R.C. BARNHISEL

DATE 7-12-85

WEATHER CLEAR

TEMP. 80°

ROUTE 18

COUNTY SENECA

TOWNSHIP THOMPSON

SECTION 30

T. 3 N. R. 17 E.

TYPE MONUMENT SMALL SPIKE

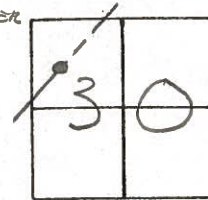
ON SURFACE = BELOW YES

~~LEFT~~ = & PAV'T. - RIGHT YES

10.1 TO LT. EDGE PAVEMENT

S.L.M. 1528 + 17

Set P.K./washer
9-25-85 SWA

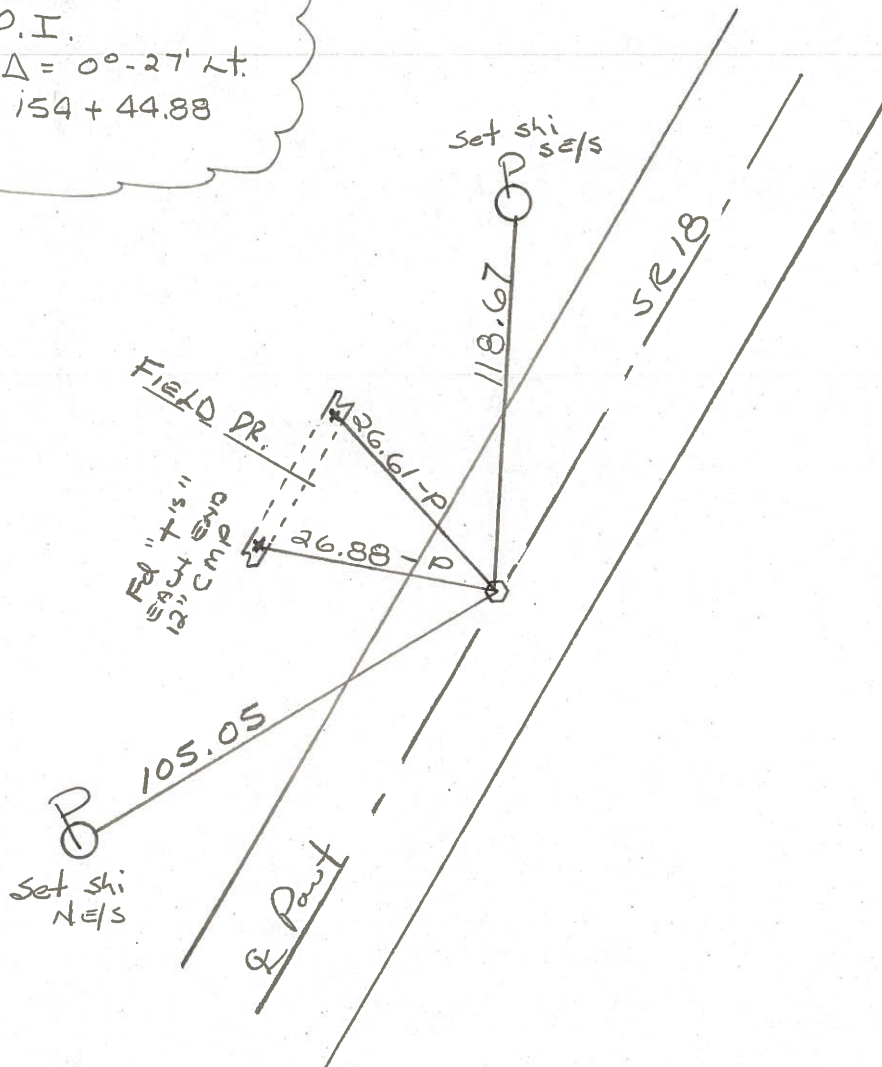


Records:

P.I.

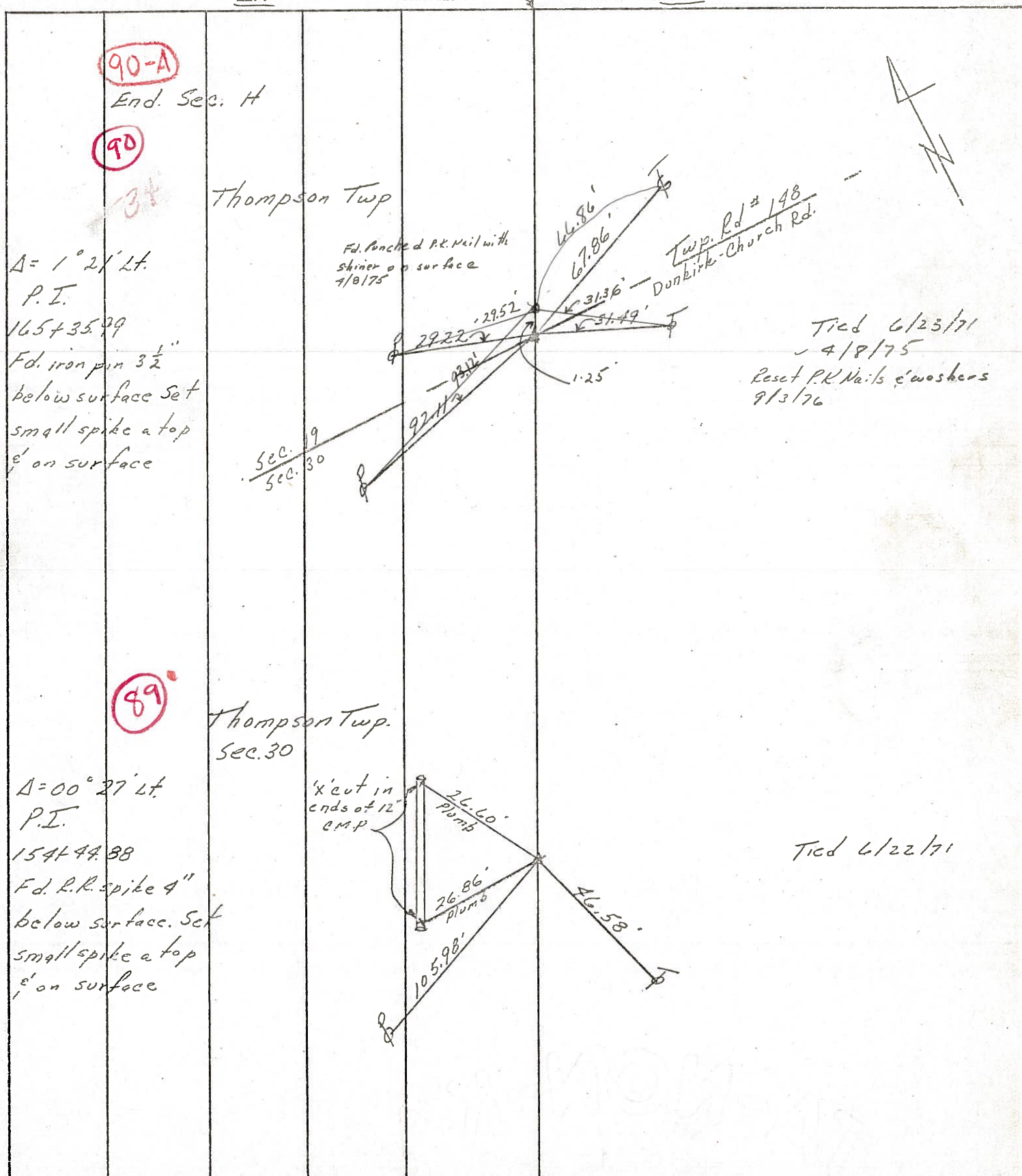
$\Delta = 0^\circ - 27' \text{ Lt.}$

154 + 44.88



PERSONNEL	TITLE	PERSONNEL	TITLE	COUNTY	DATE
Ash				Seneca	11/20/72
Cronin				S. R. #18 (S.H. #267)	WEATHER cloudy
Ripple				SEC. H	TEMP. 37°
Anderson					

DESCRIPTION Tics for Control Points - Republic to Sandusky Co. Line JOB NO. _____



PERSONNEL	TITLE	PERSONNEL	TITLE	COUNTY	DATE
Ash				Seneca	11/20/72
Cronin				S. R. #18 (S.H. #267)	WEATHER cloudy
Ripple				SEC. 'H'	TEMP. 37°
Anderson					

DESCRIPTION Ties for Control Points - Republic to Sandusky Co. Line JOB NO. _____

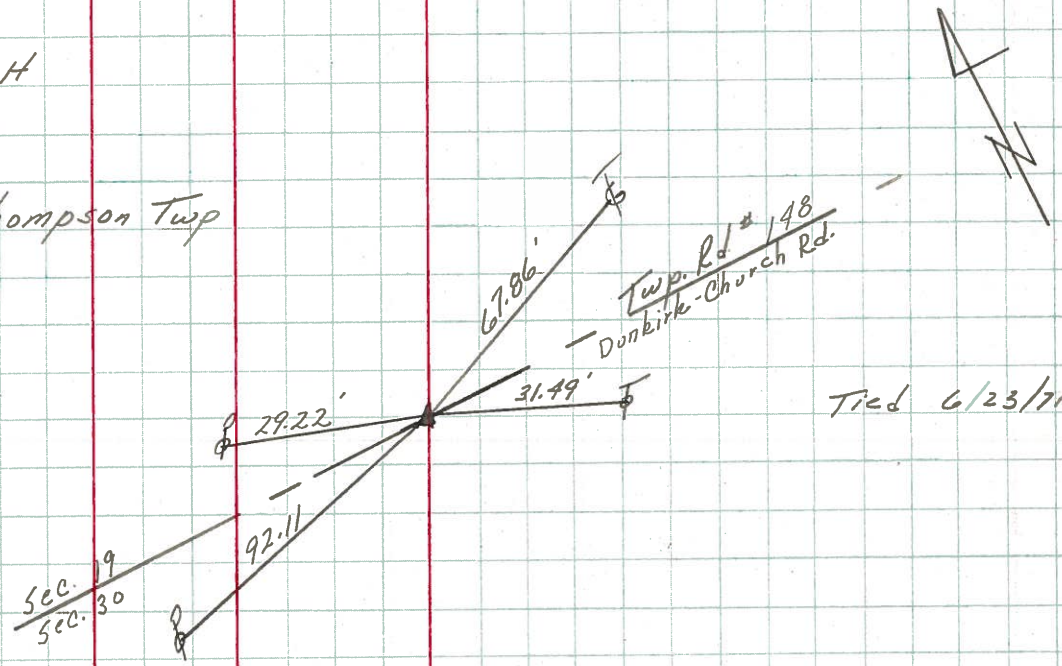
90

End. Sec. H

34

Thompson Twp

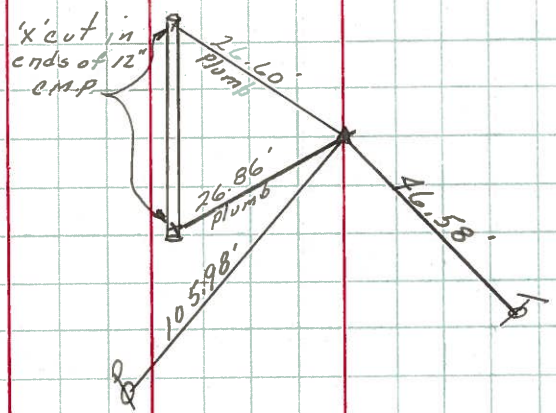
A = 1° 2' Lt.
 P.I.
 165 + 35.99
 Fd. iron pin 3 1/2"
 below surface Set
 small spike a top
 6' on surface



89

Thompson Twp.
 Sec. 30

A = 00° 27' Lt
 P.I.
 154 + 44.88
 Fd. R.R. spike 4"
 below surface. Set
 small spike a top
 6' on surface



PERSONNEL	TITLE	PERSONNEL	TITLE	COUNTY	DATE
Schneider		Potts		Seneca	11-13-68
Mosser				S. R. 18	WEATHER Cold
Barbour				SEC Republic to San. Co. Line	TEMP. 25°
Redding					

DESCRIPTION Ties for Control Points JOB NO. _____

