

O.D.O.T. DISTRICT 2 SURVEY OFFICE (USE ONLY)

PERSONNEL

REFERENCE NO. 90 A

SHEET 24 OF 28

NOTES RHOADES DATE 5-24-18
 H.C. O'DONNELL WEATHER SUNNY
 R.C. TRENKA TEMP. 78°

ROUTE SR 18
 COUNTY SENECA
 TOWNSHIP THOMPSON
 SECTION 19
 T 3 N R 17 E

DWG BY JAMES PID 101281

TYPE MONUMENT P.K./WASHER

~~ON SURFACE~~ - BELOW 3"

OFFSET \varnothing PAVEMENT 0.7' ~~LT~~ : RT

- TO - EDGE PAVEMENT

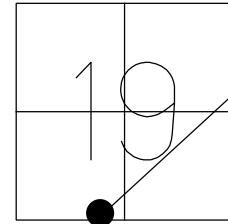
STATION: 1534+80.66

HORZ. DATUM: NAD83 2011

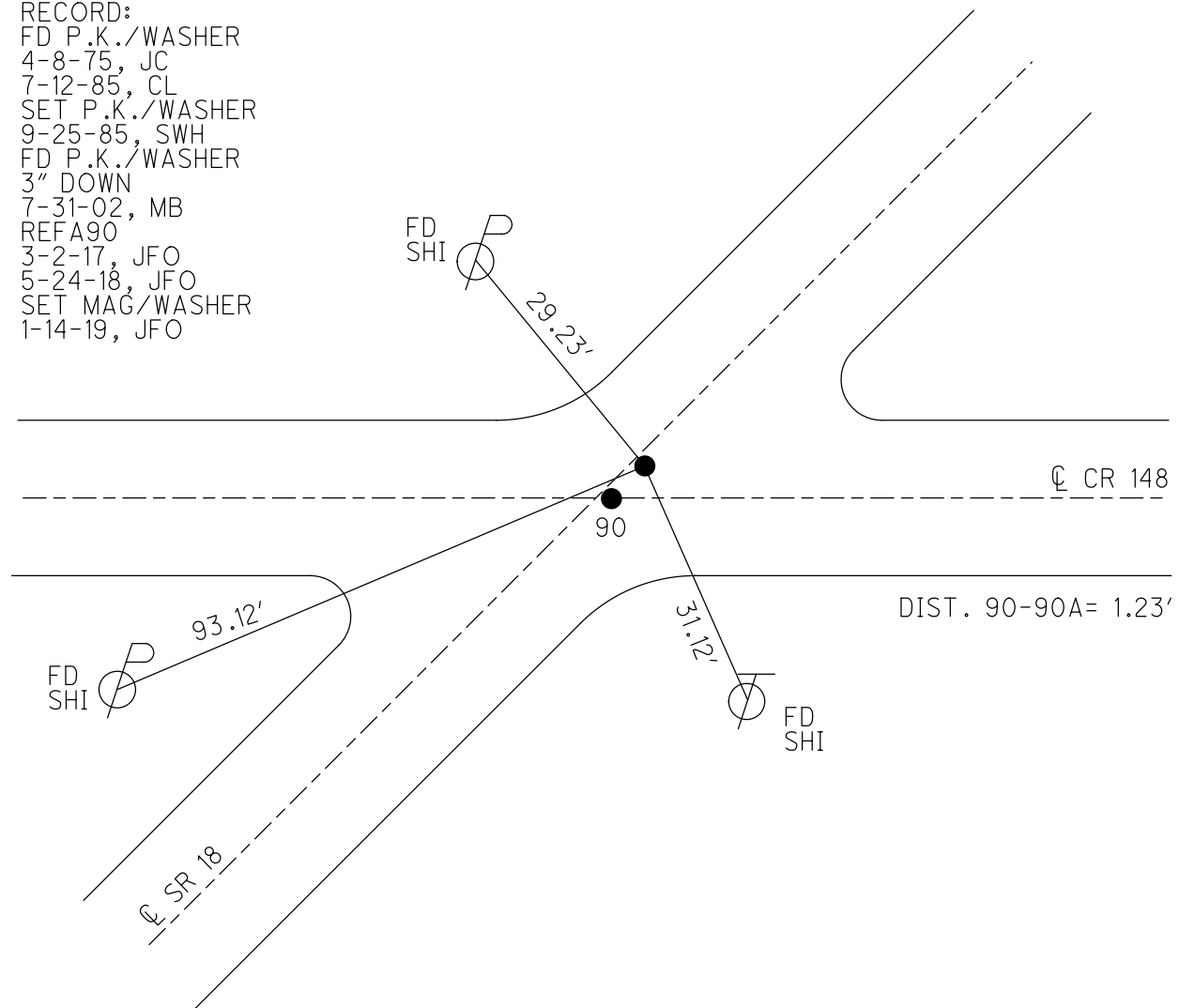
GEOID: NAVD88 2012A

GRID: NORTHING: 558119.100

EASTING: 1844891.766



RECORD:
 FD P.K./WASHER
 4-8-75, JC
 7-12-85, CL
 SET P.K./WASHER
 9-25-85, SWH
 FD P.K./WASHER
 3" DOWN
 7-31-02, MB
 REFA90
 3-2-17, JFO
 5-24-18, JFO
 SET MAG/WASHER
 1-14-19, JFO



O.D.O.T. DISTRICT 2 SURVEY OFFICE

PERSONNEL

REFERENCE NO. 90

SHEET OF

NOTES Hoffman

H.C. Loehrke

R.C. BARNHISEL

DATE 7-12-85

WEATHER Clear

TEMP. 80°

ROUTE 18

COUNTY SENECA

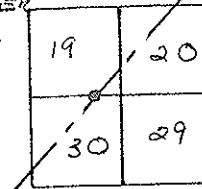
TOWNSHIP THOMPSON

SECTION 30

T3 NR 17 E

TYPE MONUMENT Δ = P.K./WASHER
 ON SURFACE - BELOW yes
 LEFT - \odot PAV'T. - RIGHT 0.7'
TO EDGE PAVEMENT on & point
Ref # 148 west
 S.L.M. 1539 +10

SET P.K./WASHER
 @ BOTH POINTS
 9-25-85
 SWN



Record:

P.I.

$\Delta = 1^{\circ} - 21' 21''$

165 + 35.99

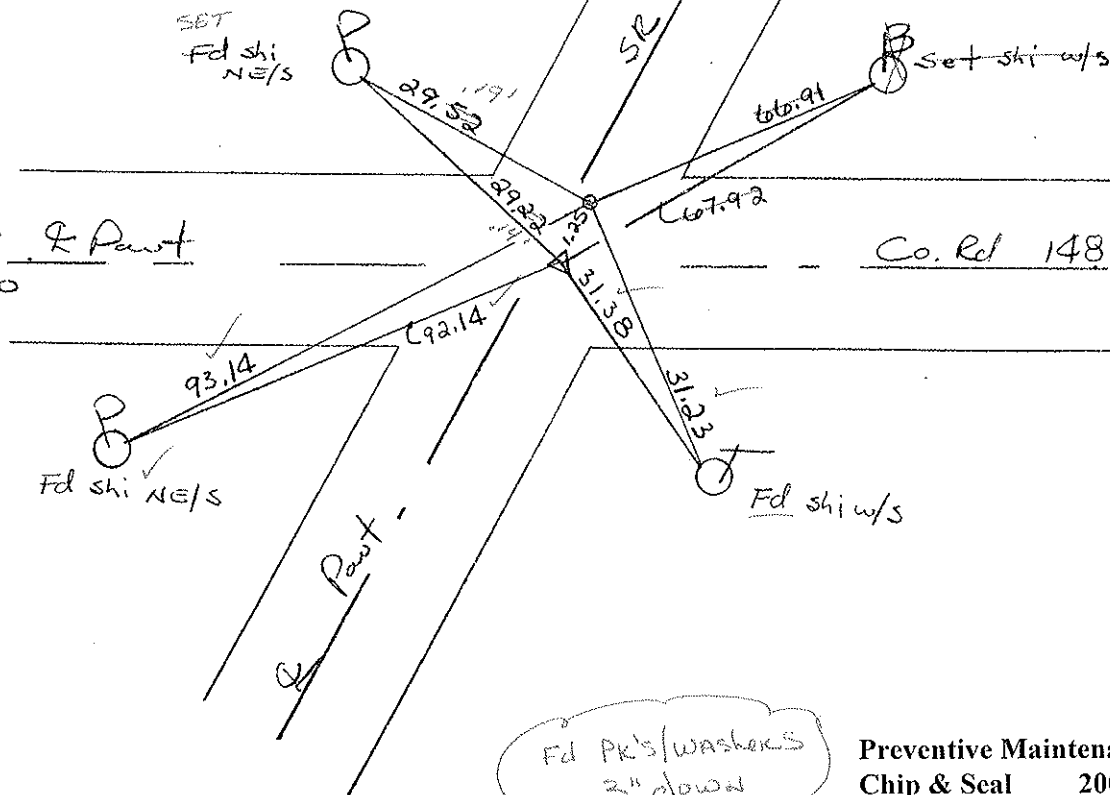
165+35.99 BACK =
 0 +00 ANCHOR

\odot = Fd P.K./WASHER @ SURFACE
 1.25' Northernly of P.I.
 Fd By J. CRONIA 4-8-75

Sec. 19 & Point

Sec. 30

Co. Rd 148



Fd P.K's/washers
 3" down
 7-31-02
 MB

Preventive Maintenance
 Chip & Seal 2002
 Existing Point Uncovered
 Date 12-06-02

O.D.O.T. DISTRICT 2 SURVEY OFFICE

PERSONNEL

REFERENCE NO. 90

SHEET OF

NOTES Hoffman

H.C. LOHRKE

R.C. BARNHISEL

DATE 7-12-85

WEATHER Clear

TEMP. 80°

ROUTE 18

COUNTY SENECA

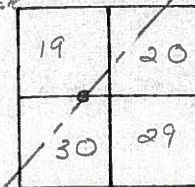
TOWNSHIP THOMPSON

SECTION 30

T. 3 N. R. 17 E

TYPE MONUMENT Δ = P.K./WASHER
 ON SURFACE - ~~BELOW~~ yes
~~LEFT- & PAV'T.~~ - RIGHT 0.7'
TO EDGE PAVEMENT on & Post Rd #148 west
 S.L.M. 1539 +10

SET P.K./WASHER @ BOTH POINTS
 7-25-85 SWH



Record:

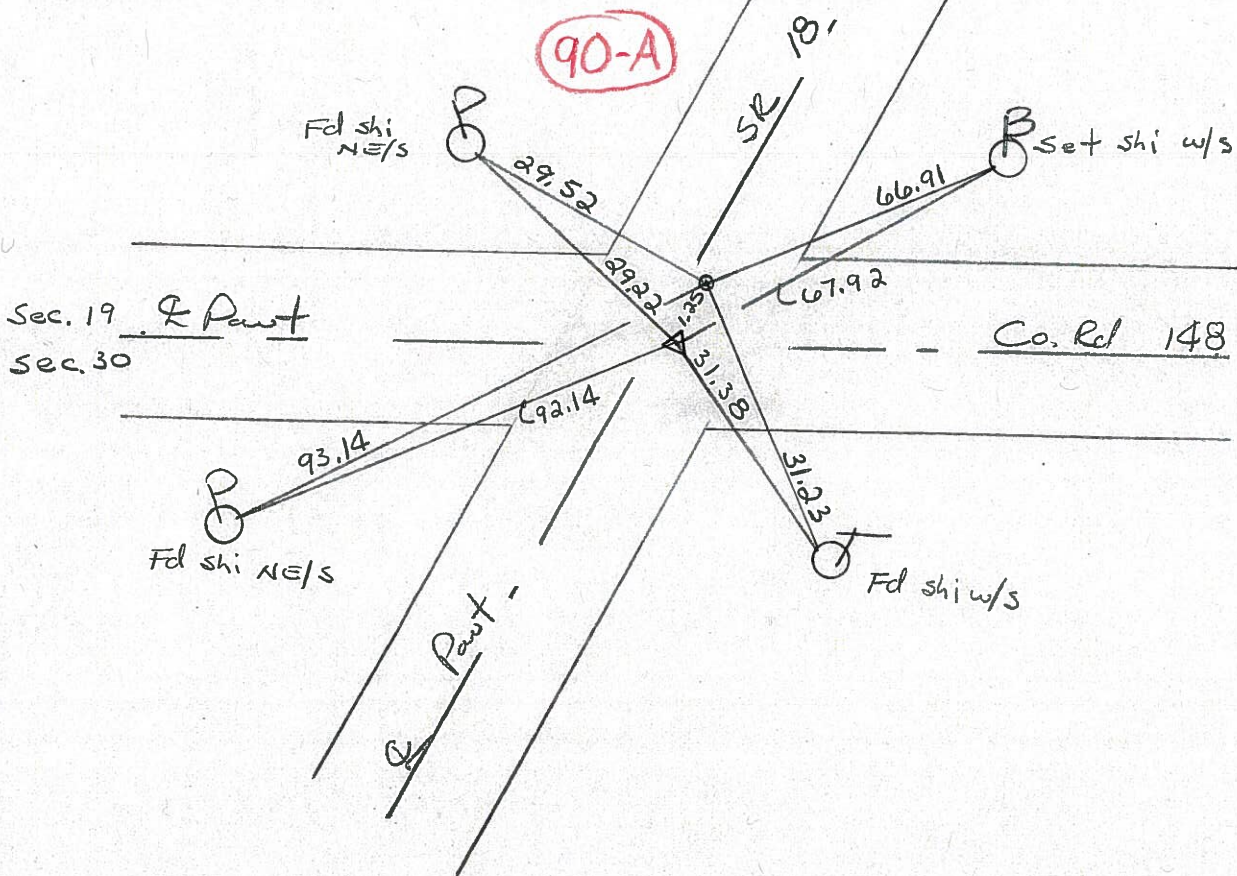
P.I.

$\Delta = 1^{\circ}-21'2T$
 165+35.99

165+35.99 BACK =
 0 +80 AHEAD

O = Fd P.K./washer @ surface
 1.25' Northerly of P.I.
 Fd by J. Cronin 4-8-75

90-A



PERSONNEL	TITLE	PERSONNEL	TITLE	COUNTY	DATE
Ash				Seneca	11/20/72
Cronin				S. R. #18 (S.H. #267)	WEATHER cloudy
Ripple				SEC. 'H'	TEMP. 37°
Anderson					

DESCRIPTION *Tics for Control Points - Republic to Sandusky Co. Line* JOB NO.

