

O.D.O.T. DISTRICT 2 SURVEY OFFICE (USE ONLY)

PERSONNEL

REFERENCE NO. 91

SHEET 25 OF 28

NOTES RHOADES

DATE 5-24-18

ROUTE SR 18

H.C. O'DONNELL

WEATHER SUNNY

COUNTY SENECA

R.C. TRENKA

TEMP. 78°

TOWNSHIP THOMPSON

SECTION 19

DWG BY JAMES PID 101281

T 3 N R 17 E

TYPE MONUMENT P.K./WASHER

ON SURFACE - ~~BELOW~~ ON

OFFSET ☉ PAVEMENT 1.6' LT : ~~RT~~

9.2' TO LT EDGE PAVEMENT

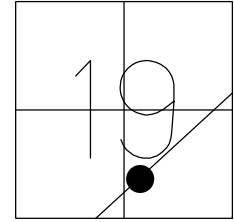
STATION: 1546+95.17

HORZ. DATUM: NAD83 2011

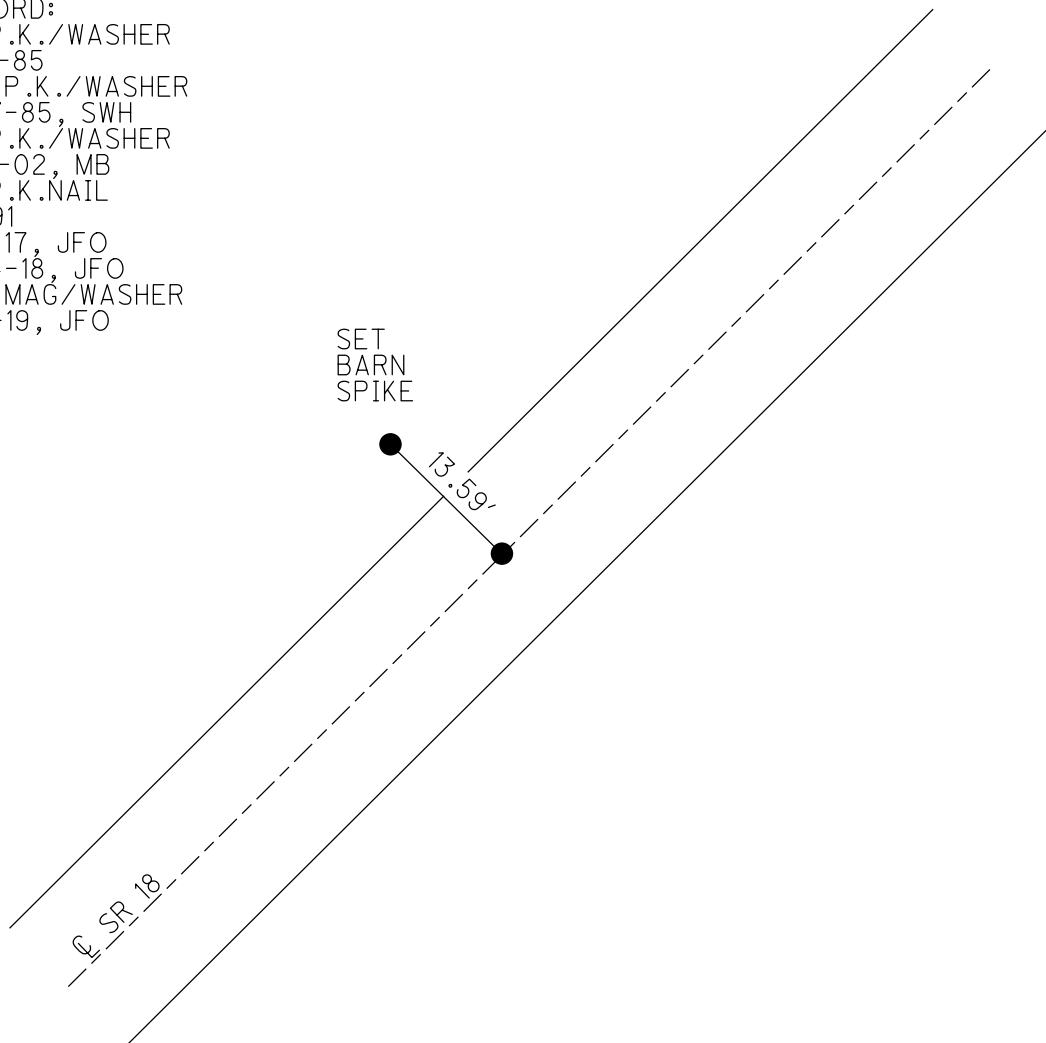
GEOID: NAVD88 2012A

GRID: NORTHING: 558977.199

EASTING: 1845751.242



- RECORD:
- FD P.K./WASHER
- 7-12-85
- SET P.K./WASHER
- 9-27-85, SWH
- FD P.K./WASHER
- 7-31-02, MB
- FD P.K.NAIL
- REF91
- 3-2-17, JFO
- 5-24-18, JFO
- SET MAG/WASHER
- 1-14-19, JFO

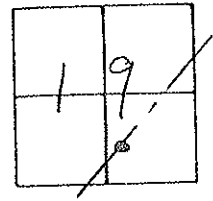


# O.D.O.T. DISTRICT 2 SURVEY OFFICE

PERSONNEL \_\_\_\_\_ REFERENCE NO. 91 SHEET \_\_\_\_\_ OF \_\_\_\_\_

NOTES Hoffman DATE 7-12-85 ROUTE SR 18  
 H.C. LOHRKE WEATHER CLEAR COUNTY SENECA  
 R.C. BARNHISEL TEMP. 80° TOWNSHIP Thompson  
 SECTION 19  
 T3 N R 17 E

TYPE MONUMENT PK/WASHER Set PK/WASHER  
ON SURFACE - BELOW yes 9-27-85 SWA  
 LEFT-0 PAV'T. RIGHT 1.6  
9.2 TO LT. EDGE PAVEMENT  
 S.L.M. 1551 + 27



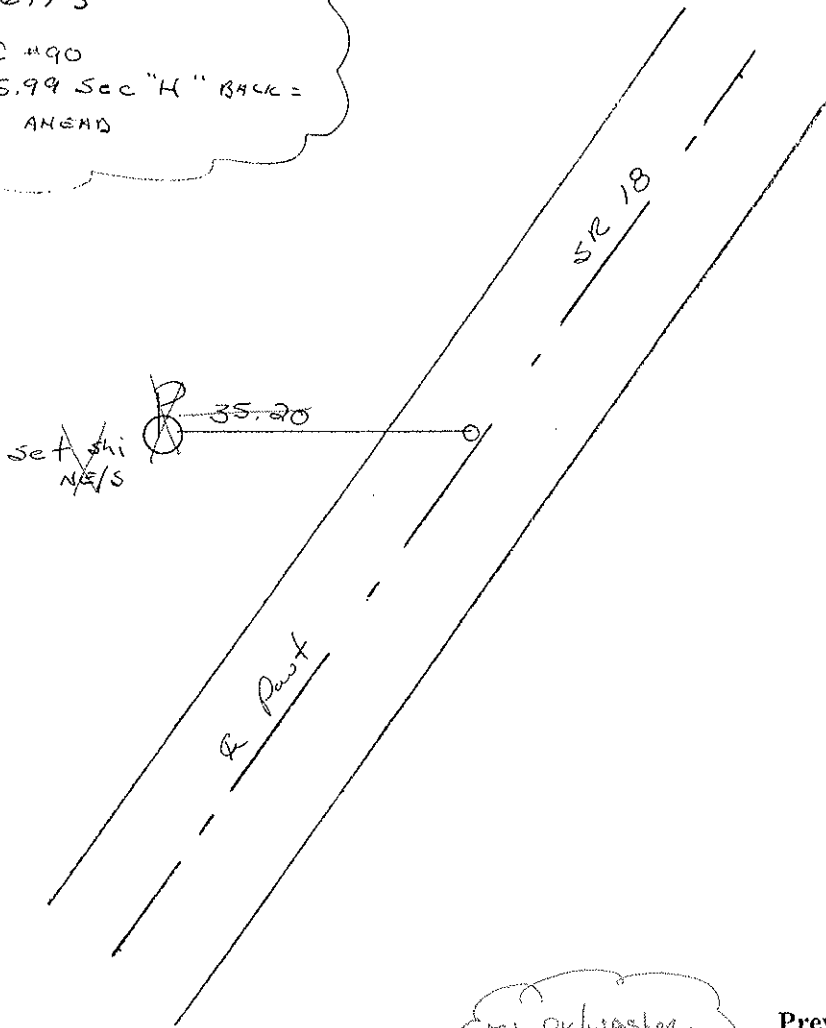
RECORD:

12 + 16.15

ALSO Ref #90

165 + 35.99 Sec "H" BACK =

0 + 00 AHEAD



Ed PK/Washer  
 7-31-02  
 MB

Preventive Maintenance  
 Chip & Seal 2002  
 Existing Point Uncovered  
 Date 12-06-02

# O.D.O.T. DISTRICT 2 SURVEY OFFICE

PERSONNEL \_\_\_\_\_

REFERENCE NO. 91

SHEET \_\_\_\_\_ OF \_\_\_\_\_

NOTES Hoffman

H.C. LOEHRKE

R.C. BARNHISEL

DATE 7-12-85

WEATHER CLEAR

TEMP. 80°

ROUTE SR 18

COUNTY SENECA

TOWNSHIP THOMPSON

SECTION 19

T3 N R 17 E

TYPE MONUMENT PK / WASHER

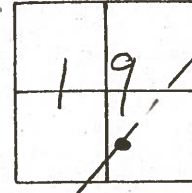
Set PK/WASHER  
9-27-85 SWA

ON SURFACE - ~~BELOW~~ yes

LEFT - ~~C~~ PAV'T. - ~~RIGHT~~ 1.6

9.2 TO LT. EDGE PAVEMENT

S.L.M. 1551 + 27



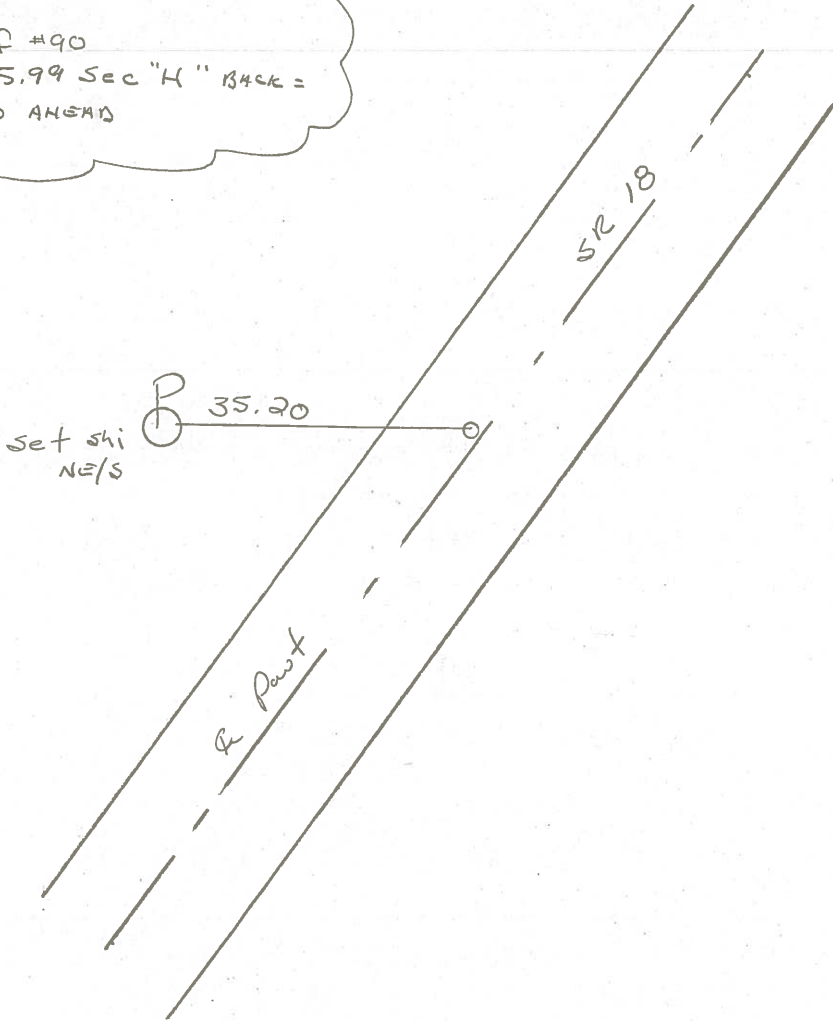
RECORD:

12 + 16.15

ALSO Ref #90

165 + 35.99 Sec "H" BACK =

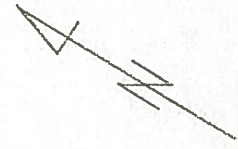
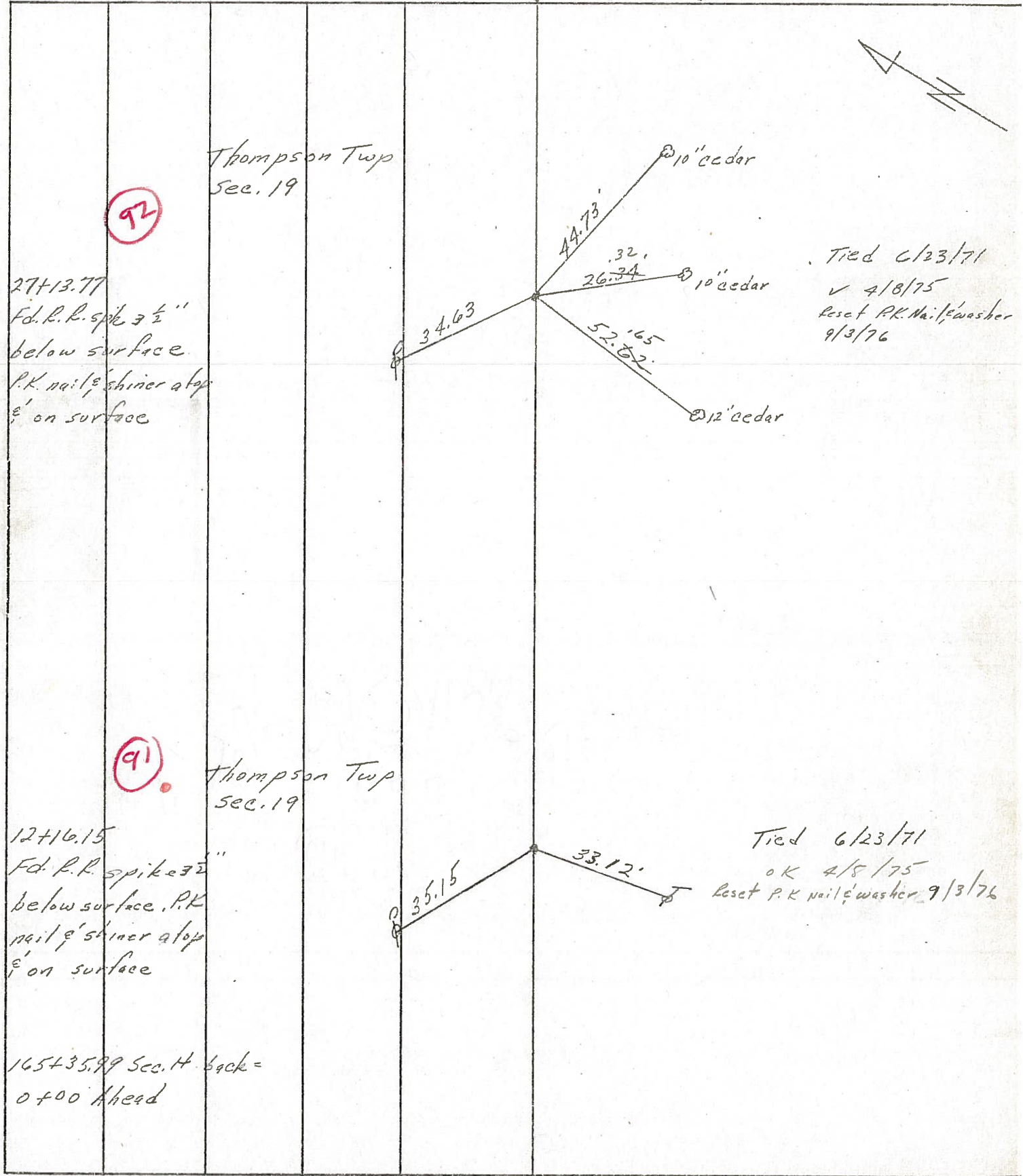
0 + 00 AHEAD



PERSONNEL	TITLE	PERSONNEL	TITLE
Ash			
Cronin			
Ripple			
Anderson			

COUNTY Seneca DATE 11/21/72  
 S. R. # 18 (S.H. #267) WEATHER overcast-snow  
 SEC. Q R-1 & R-2 TEMP. 33°

DESCRIPTION Ties for Control Points - Republic to Sandusky Co. Line JOB NO. \_\_\_\_\_



Tied 6/23/71  
 ✓ 4/8/75  
 Reset P.K. Nail & washer  
 9/3/76

Tied 6/23/71  
 OK 4/8/75  
 Reset P.K. nail & washer 9/3/76

165435.99 Sec. H back =  
 0 + 00 Ahead

PERSONNEL	TITLE	PERSONNEL	TITLE
Ash			
Cronin			
Ripple			
Anderson			

COUNTY Seneca DATE 11/21/72  
 S. R. # 18 (S.H. #267) WEATHER overcast-snow  
 SEC. Q R-1 & R-2 TEMP. 33°

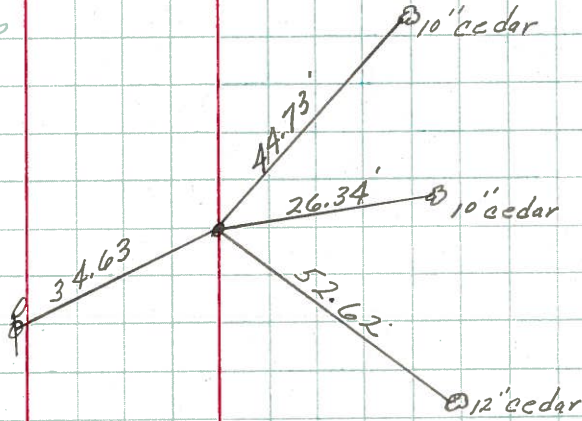
DESCRIPTION Ties for Control Points - Republic to Sandusky Co. Line JOB NO. \_\_\_\_\_

LEFT CENTER LINE RIGHT

92

Thompson Twp  
Sec. 19

27+13.77  
 Fd. R.R. spike 3 1/2"  
 below surface.  
 P.K. nail & shiner atop  
 8' on surface

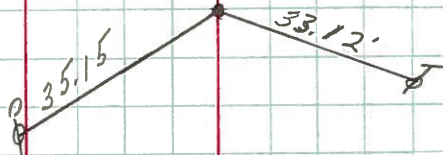


Tied 6/23/71

91

Thompson Twp  
Sec. 19

12+16.15  
 Fd. R.R. spike 3 1/2"  
 below surface. P.K.  
 nail & shiner atop  
 8' on surface



Tied 6/23/71

165+35.89 Sec. 14 back =  
 0+00 Ahead

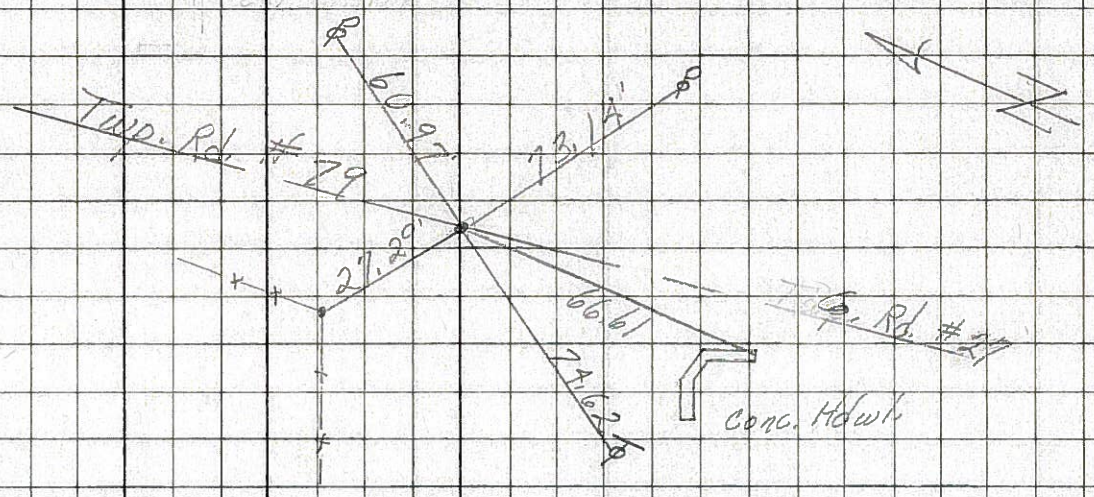
PERSONNEL	TITLE	PERSONNEL	TITLE	COUNTY	DATE
Schneider				Seneca	11-13-68
Barbour				S. R. 18	WEATHER Cold
Redding				SEC. Republic to Sen. Co. Line	TEMP. 25°
Potts					

DESCRIPTION *Ties for Control Points*      JOB NO. \_\_\_\_\_

93

P. O. T.  
1584 + 10.8  
P. K. Nail

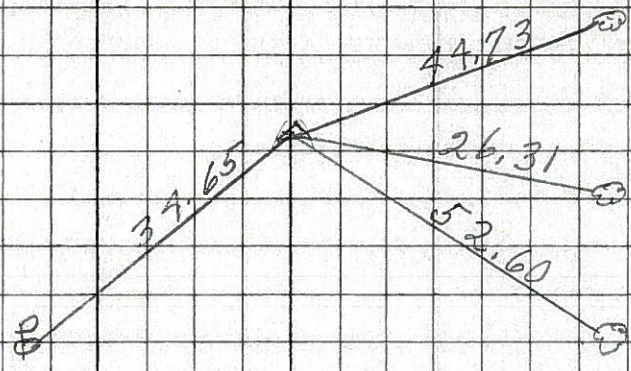
8182



92

1565 + 67  
P. K. Nail

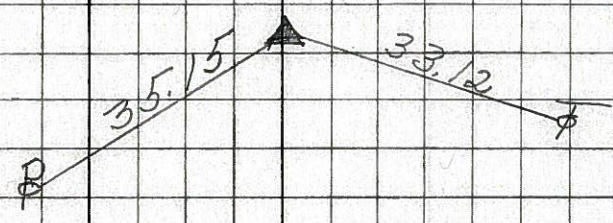
8181



91

1550 + 66.2  
P. K. Nail

8180



90

1538 + 48.5 (SAM)  
165 + 35.99  
P. K. Nail  
Δ = 1° 21' Lt.

8179

