

O.D.O.T. DISTRICT 2 SURVEY OFFICE (USE ONLY)

PERSONNEL

REFERENCE NO. 92

SHEET 26 OF 28

NOTES RHOADES DATE 5-24-18
 H.C. O'DONNELL WEATHER SUNNY
 R.C. TRENKA TEMP. 78°

ROUTE SR 18
 COUNTY SENECA
 TOWNSHIP THOMPSON
 SECTION 19
 T 3 N R 17 E

DWG BY JAMES PID 101281

TYPE MONUMENT P.K./WASHER

ON SURFACE - ~~BELOW~~ ON

OFFSET CL PAVEMENT 1.0 LT : ~~RT~~
9.4' TO LT EDGE PAVEMENT

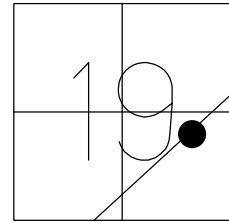
STATION: 1561+92.38

HORZ.DATUM: NAD83 2011

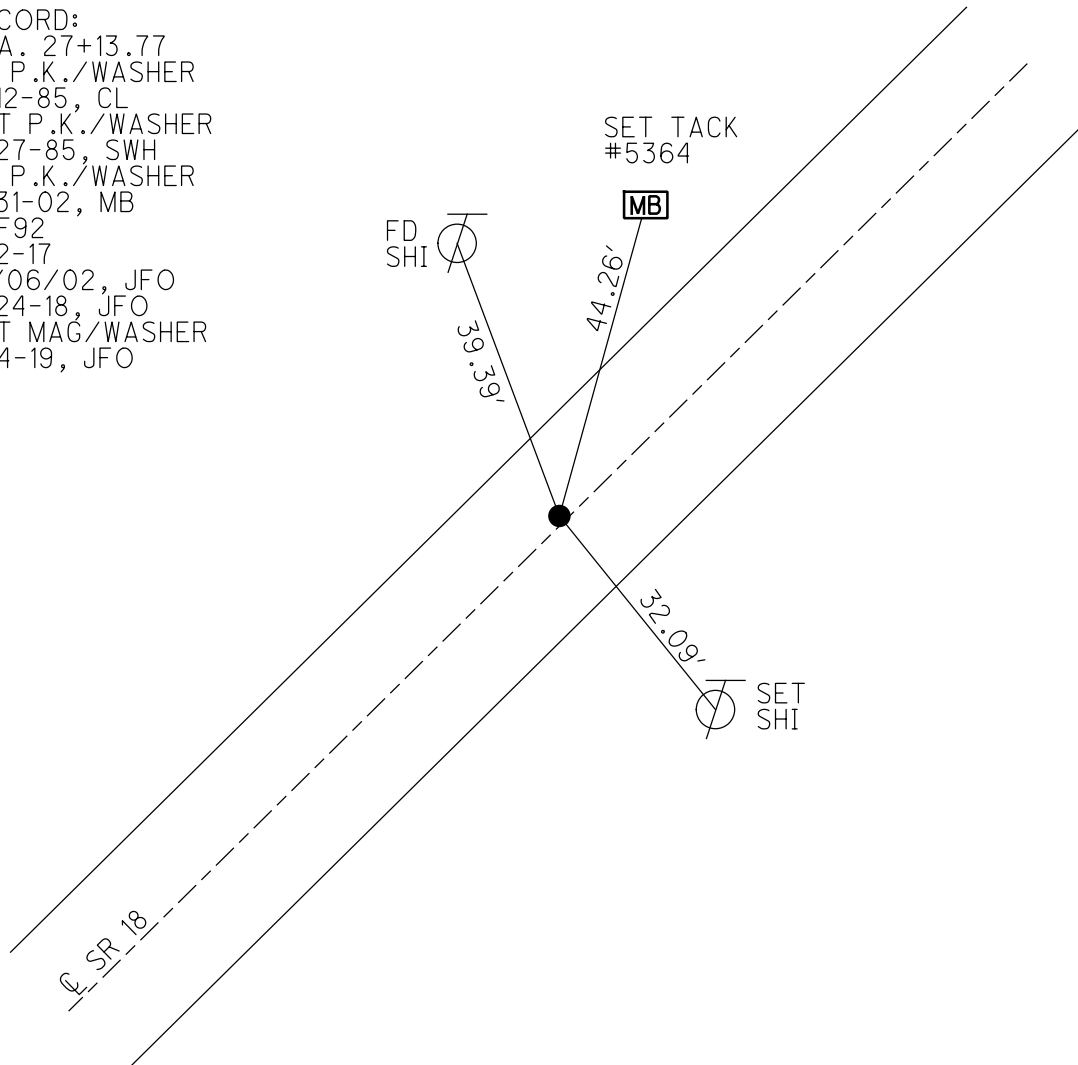
GEOID: NAVD88 2012A

GRID: NORTHING: 560019.936

EASTING: 1846825.645



RECORD:
 STA. 27+13.77
 FD P.K./WASHER
 7-12-85, CL
 SET P.K./WASHER
 9-27-85, SWH
 FD P.K./WASHER
 7-31-02, MB
 REF92
 3-2-17
 12/06/02, JFO
 5-24-18, JFO
 SET MAG/WASHER
 1-14-19, JFO



O.D.O.T. DISTRICT 2 SURVEY OFFICE

PERSONNEL _____

REFERENCE NO. 92

SHEET _____ OF _____

NOTES Hoffman

H.C. LOEHKKE

R.C. BARNHISEL

DATE 7-12-85

WEATHER CLEAR

TEMP. 80°

ROUTE SR 18

COUNTY SENECA

TOWNSHIP THOMPSON

SECTION 19

T3 N R 17 E

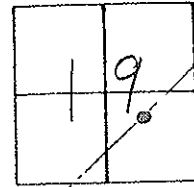
TYPE MONUMENT P.K./WASHER Set P.K./WASHER

ON SURFACE - BELOW yes

LEFT - 0 PAV'T. - RIGHT 1.0

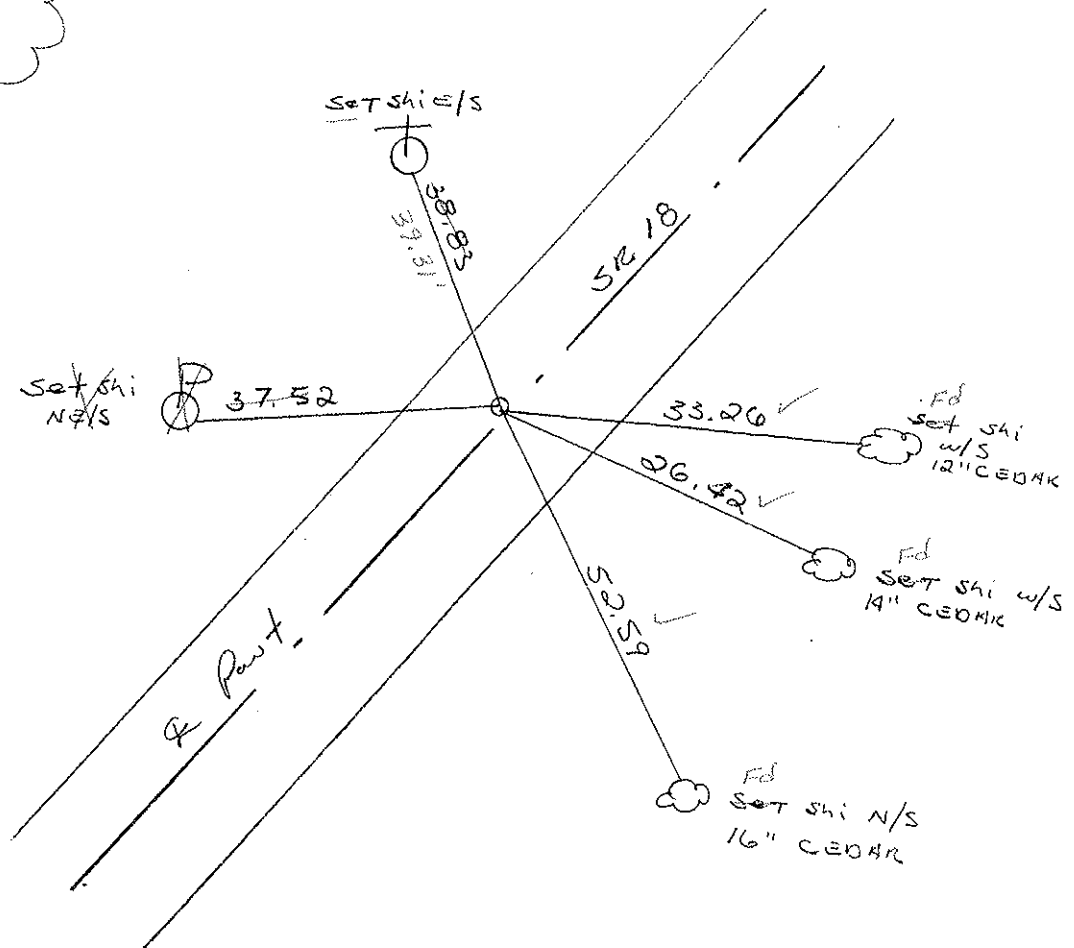
9.4 TO LT. EDGE PAVEMENT

S.L.M. 1566+25



RECORDS:

27+13.77



Fd Pk/Washer
 7-31-02
 MB

Preventive Maintenance
 Chip & Seal 2002
 Existing Point Uncovered
 Date 12-06-02

O.D.O.T. DISTRICT 2 SURVEY OFFICE

PERSONNEL _____

REFERENCE NO. 92

SHEET _____ OF _____

NOTES Hoffman

H.C. LOEHKE

DATE 7-12-85

ROUTE SR 18

R.C. BARNHISEL

WEATHER CLEAR

COUNTY SENECA

TEMP. 800

TOWNSHIP THOMPSON

SECTION 19

T 3 N R 17 E

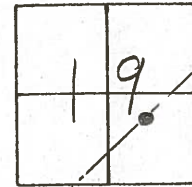
TYPE MONUMENT P.K./WASHER Set P.K./WASHER

ON SURFACE - BELOW YES 9-27-85 SWH

LEFT - C PAV'T. - RIGHT 1.0

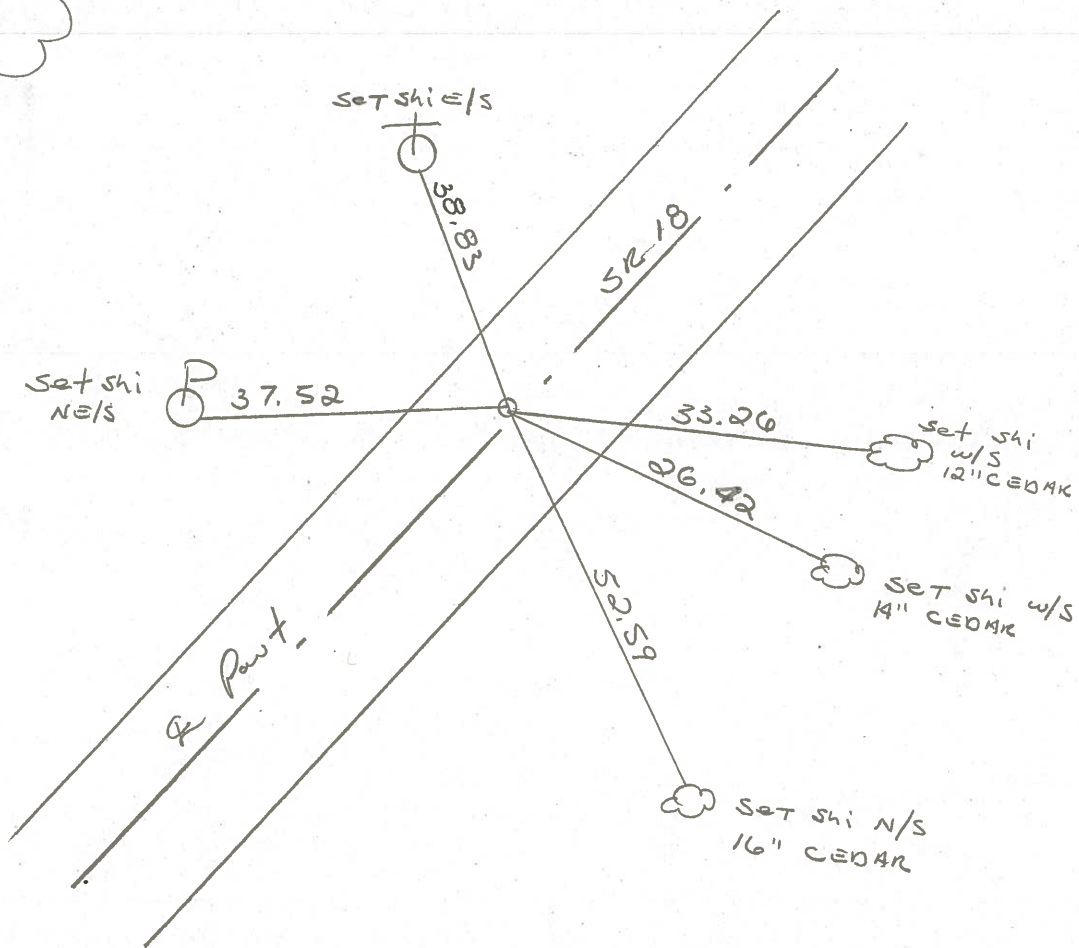
9.4 TO LT. EDGE PAVEMENT

S.L.M. 1566+25



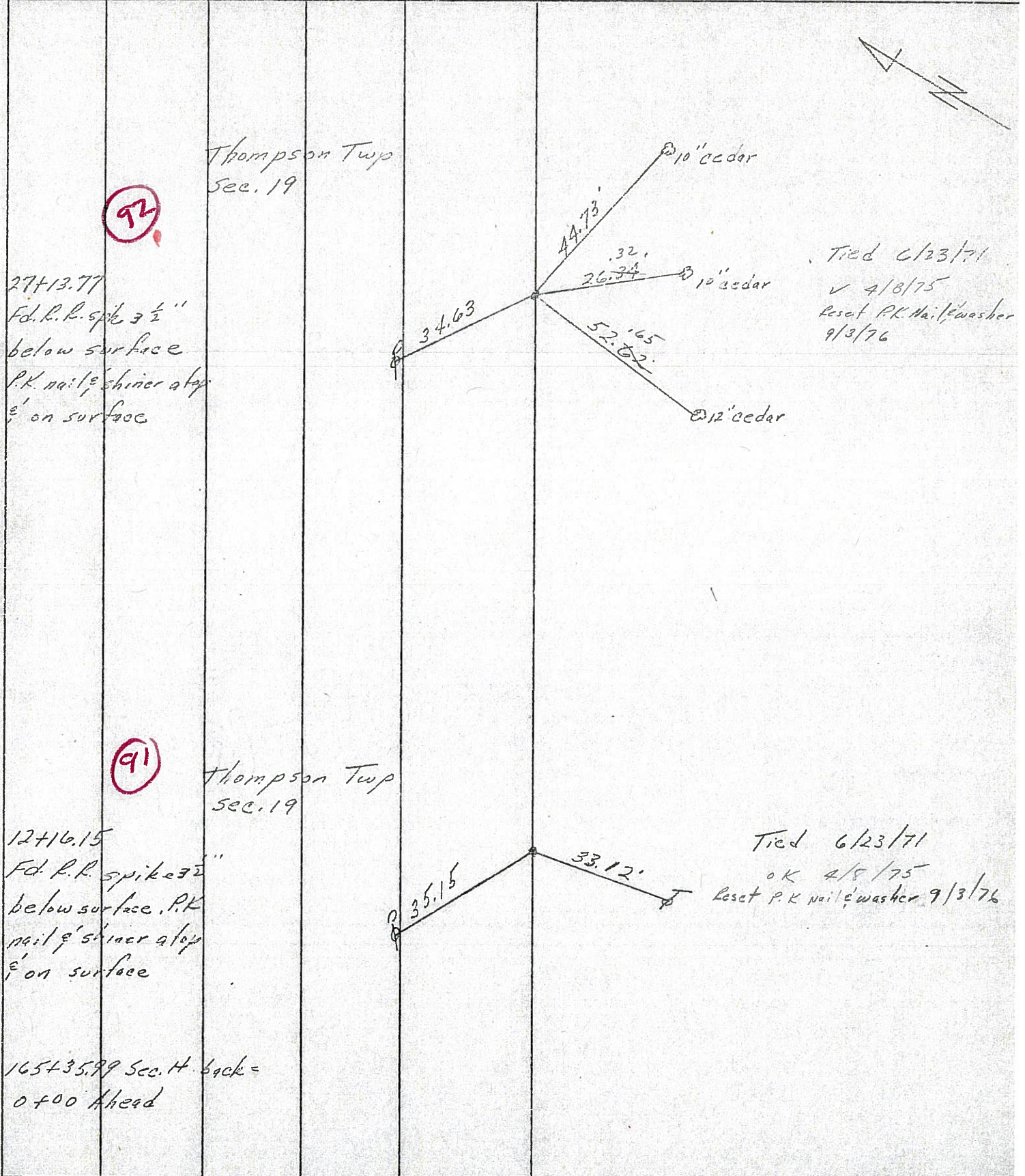
RECORDS:

27+13.77



PERSONNEL	TITLE	PERSONNEL	TITLE	COUNTY	DATE	WEATHER	TEMP.
Ash				Seneca	11/21/72	overcast-snow	33°
Cronin				S. R. # 18 (S.H. # 267)			
Ripple				SEC. D R-1 E R-2			
Anderson							

DESCRIPTION: Ties for Control Points - Republic to Sandusky Co. Line



PERSONNEL	TITLE	PERSONNEL	TITLE	COUNTY	DATE
Ash				Seneca	11/21/72
Cronin				S. R. # 18 (S.H. # 267)	WEATHER overcast-snow
Ripple				SEC. Q R-1 & R-2	TEMP. 33°
Anderson					

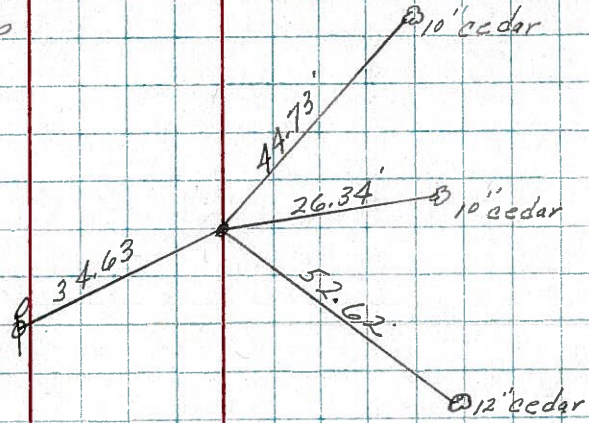
DESCRIPTION *Ties for Control Points - Republic to Sandusky Co. Line* JOB NO.

LEFT CENTER LINE RIGHT

92

Thompson Twp
Sec. 19

277+13.77
Fd. R.R. spike 3 1/2"
below surface.
P.K. nail & shiner atop
& on surface.

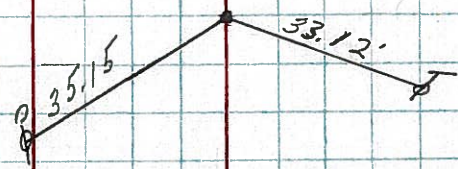


Tied 6/23/71

91

Thompson Twp
Sec. 19

124+16.15
Fd. R.R. spike 3 1/2"
below surface. P.K.
nail & shiner atop
& on surface



Tied 6/23/71

165+35.99 Sec. H. back =
0+00 ahead

PERSONNEL	TITLE	PERSONNEL	TITLE	COUNTY	DATE
Schneider				Seneca	11-13-68
Barbour				S. R. 18	WEATHER Cold
Redding				SEC Republic to San. Co. Line	TEMP. 25°
Potts					

DESCRIPTION *Ties for Control Points* JOB NO.

