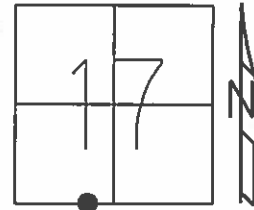


O.D.O.T. DISTRICT 2 SURVEY OFFICE (USE ONLY)

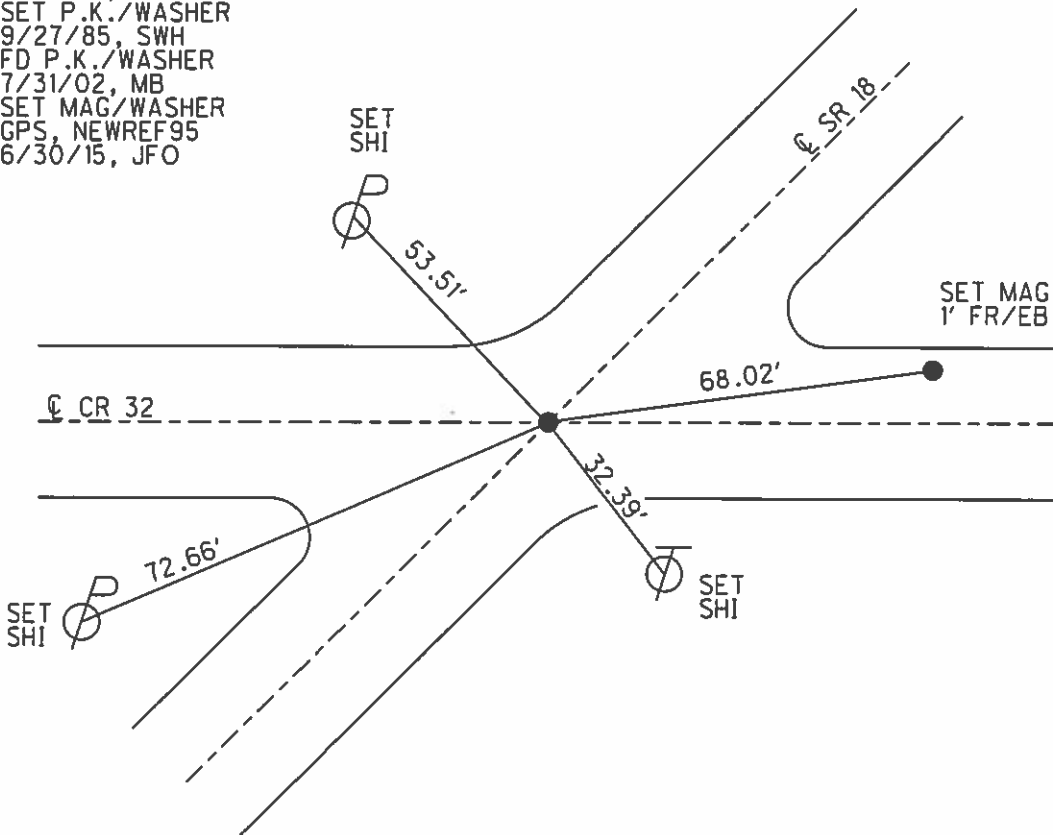
PERSONNEL \_\_\_\_\_ REFERENCE NO. 95 SHEET 1 OF 18

NOTES WESTFALL DATE 4/16/15 ROUTE SR 18  
 H.C. LEU WEATHER OVERCAST/WINDY COUNTY SENECA  
 R.C. WESTFALL TEMP. 60° TOWNSHIP THOMPSON  
 \_\_\_\_\_ SECTION 17  
 \_\_\_\_\_ T 3 N R 17 E

TYPE MONUMENT P.K./WASHER  
~~ON SURFACE~~ - BELOW 0.25'  
 LEFT - ☉ PAV'T - RIGHT ON  
- TO - EDGE PAVEMENT  
 S.L.M. 1611+98.40  
 Grid: Northing: 563345.482 Easting: 1850274.142



RECORD: P.I.  
 $\Delta = 0^\circ 06' \text{ LT}$   
 STA. 29+47.45  
 FD P.K./WASHER  
 7/12/85, MB  
 SET P.K./WASHER  
 9/27/85, SWH  
 FD P.K./WASHER  
 7/31/02, MB  
 SET MAG/WASHER  
 GPS, NEWREF95  
 6/30/15, JFO



# O.D.O.T. DISTRICT 2 SURVEY OFFICE

PERSONNEL \_\_\_\_\_

REFERENCE NO. 95

SHEET \_\_\_\_\_ OF \_\_\_\_\_

NOTES Hoffman

H.C. LOEHKE

R.C. BARWISCH

DATE 7-12-85

WEATHER CLEAR

TEMP. 75°

ROUTE SR 18

COUNTY SENECA

TOWNSHIP THOMPSON

SECTION 20

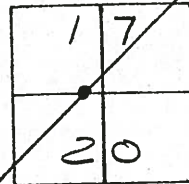
T3 N R 17 E

TYPE MONUMENT P.K. / WASHER Set PK. / WASHER  
ON SURFACE - ~~BELOW~~ YES 9-27-85 SWH

LEFT- & PAVT. - RIGHT & of BOTH PAVTS

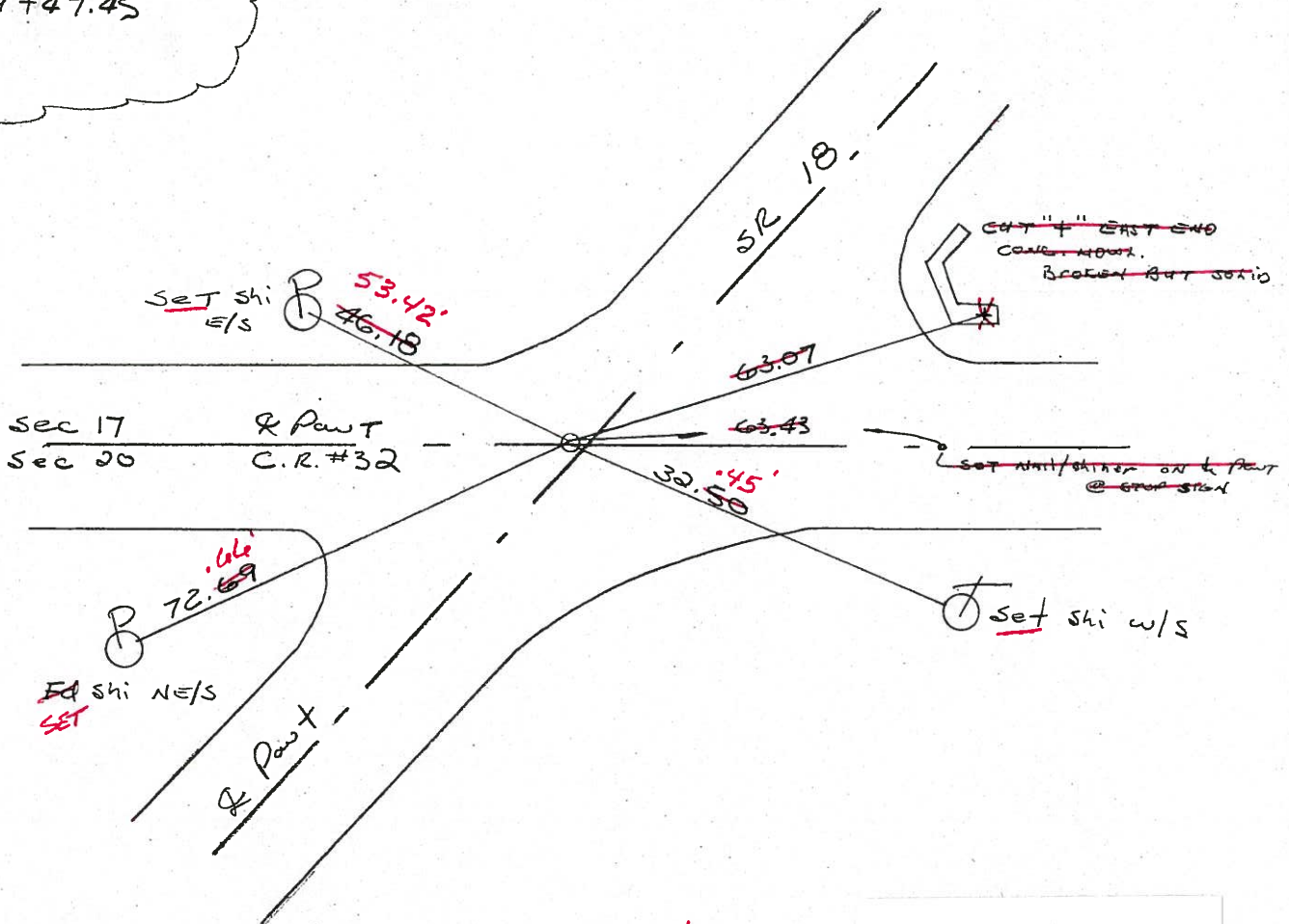
TO EDGE PAVEMENT

S.L.M. 1614 + 20



RECORD:

P.I.  
 $\Delta = 0^\circ - 06' LT.$   
29 + 47.45



Ed PK/Washer  
7-31-02  
MB

Preventive Maintenance  
Chip & Seal 2002  
Existing Point Uncovered  
Date 12-06-02

# O.D.O.T. DISTRICT 2 SURVEY OFFICE

PERSONNEL \_\_\_\_\_

REFERENCE NO. 95

SHEET \_\_\_\_\_ OF \_\_\_\_\_

NOTES Hoffman

H.C. LOSHKIE

R.C. BARNAISEK

DATE 7-12-85

WEATHER CLEAR

TEMP. 75°

ROUTE SR 18

COUNTY SENECA

TOWNSHIP THOMPSON

SECTION 20

T3 N R 17 E

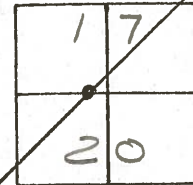
TYPE MONUMENT P.K. / WASHER Set P.K. / WASHER

ON SURFACE - BELOW YES 9-27-85 SWK

LEFT - ¢ PAV'T. - RIGHT ¢ of Both Pavts

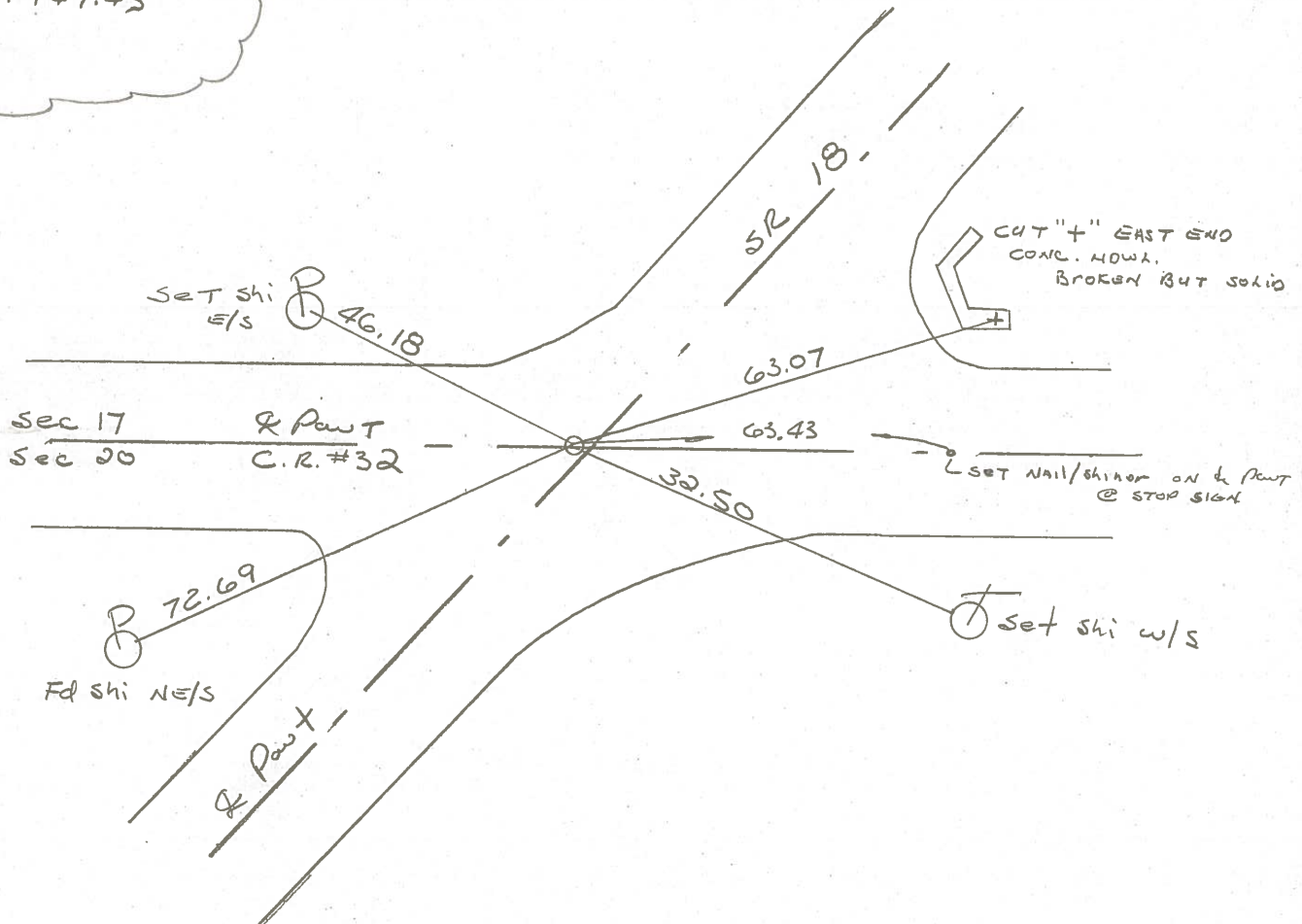
TO EDGE PAVEMENT

S.L.M. 1614 + 20



RECORD:

P.I.  
 $\Delta = 0^\circ - 06' LT,$   
29 + 47.45

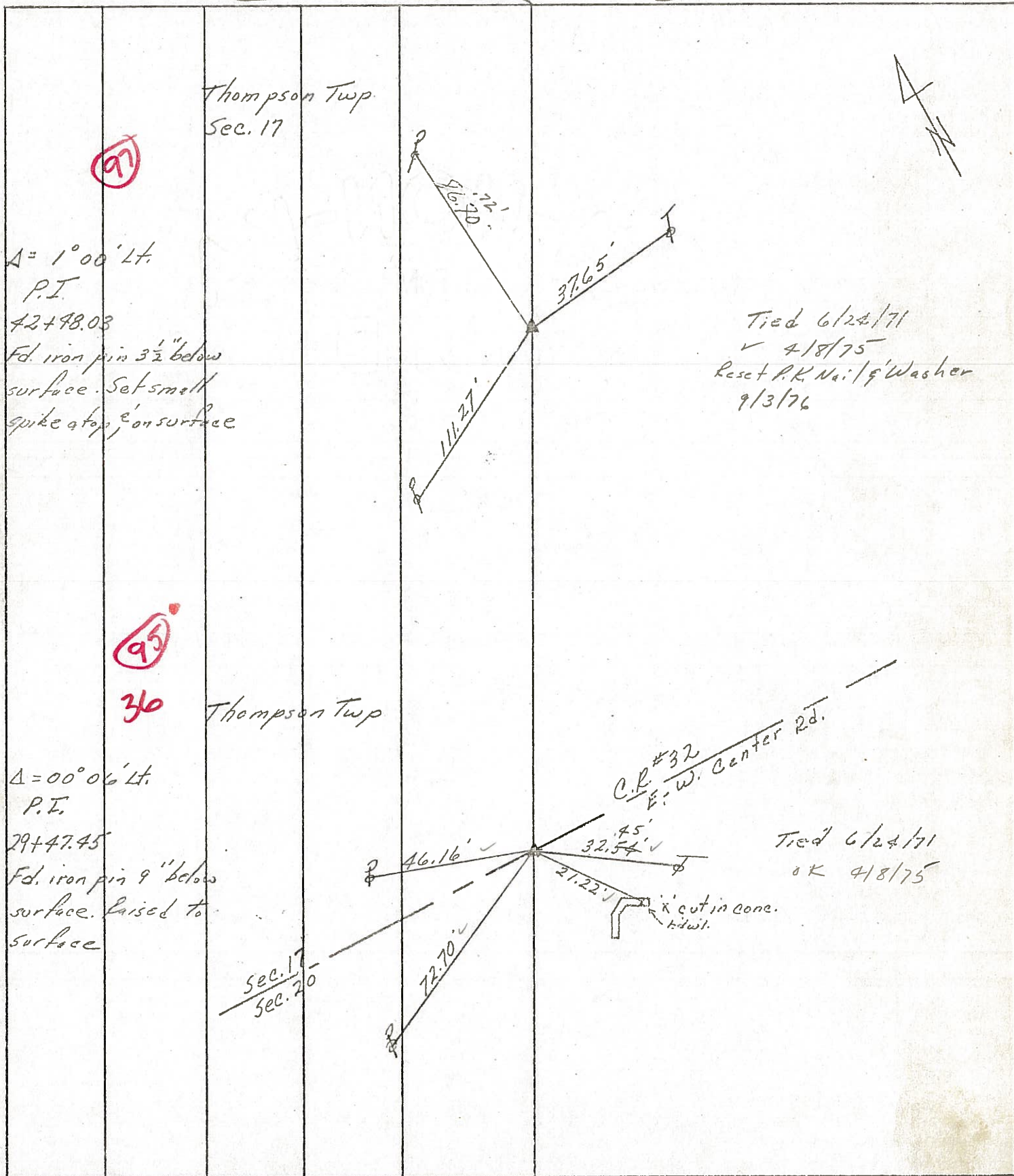




PERSONNEL	TITLE	PERSONNEL	TITLE
Ash			
Cronin			
Piople			
Anderson			

COUNTY Seneca DATE 11/21/72  
 S. R. # 18 (S.H. #267) WEATHER overcast - snow  
 SEC. R-1 & R-2 TEMP. 33°

DESCRIPTION Ties for Control Points - Republic to Sandusky Co. Line JOB NO. \_\_\_\_\_

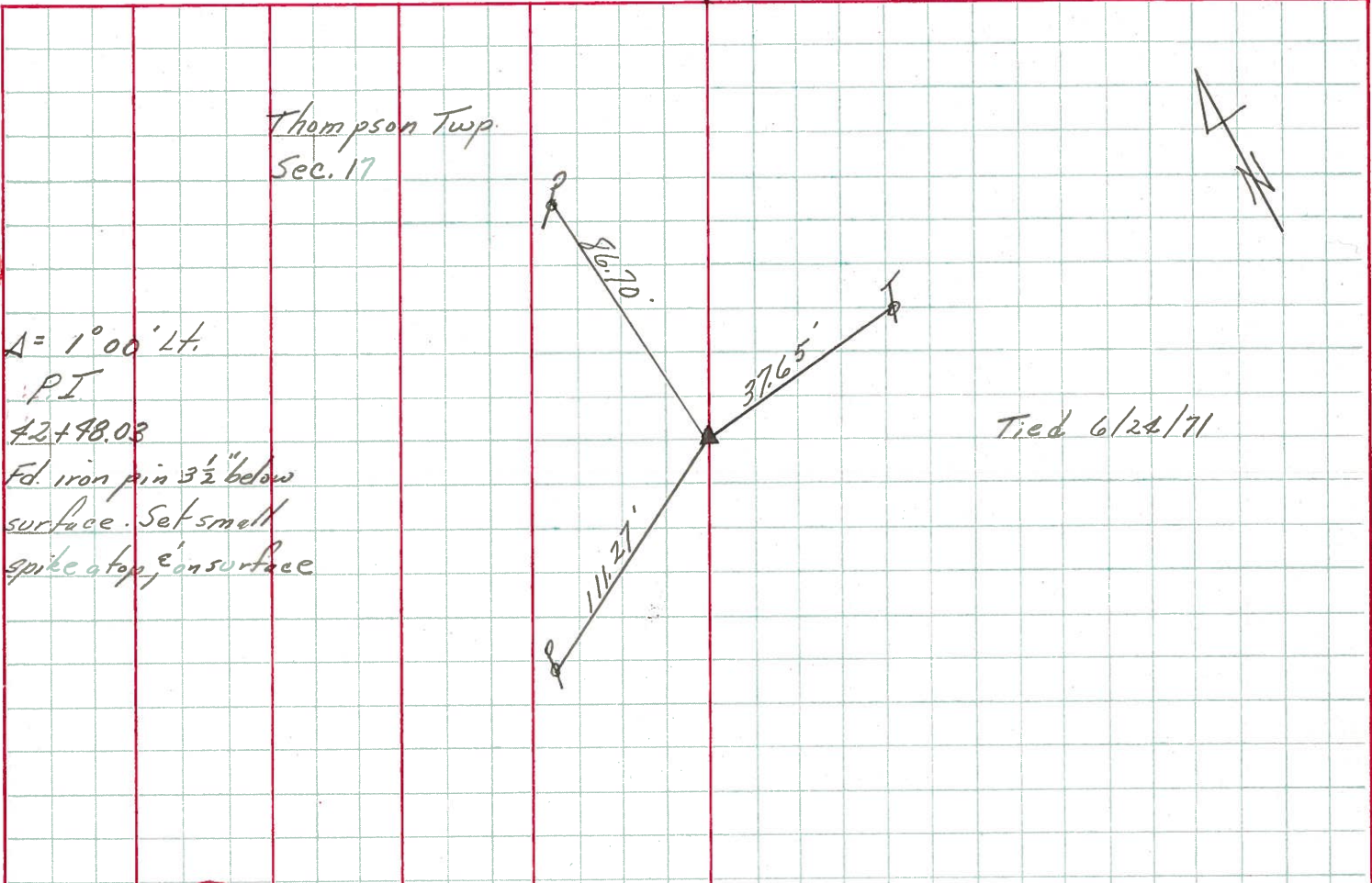


PERSONNEL	TITLE	PERSONNEL	TITLE
Ash			
Cronin			
Ripple			
Anderson			

COUNTY Seneca DATE 11/21/72  
 S. R. # 18 (S.H. #267) WEATHER overcast-snow  
 SEC. Q R-1 & R-2 TEMP. 33°

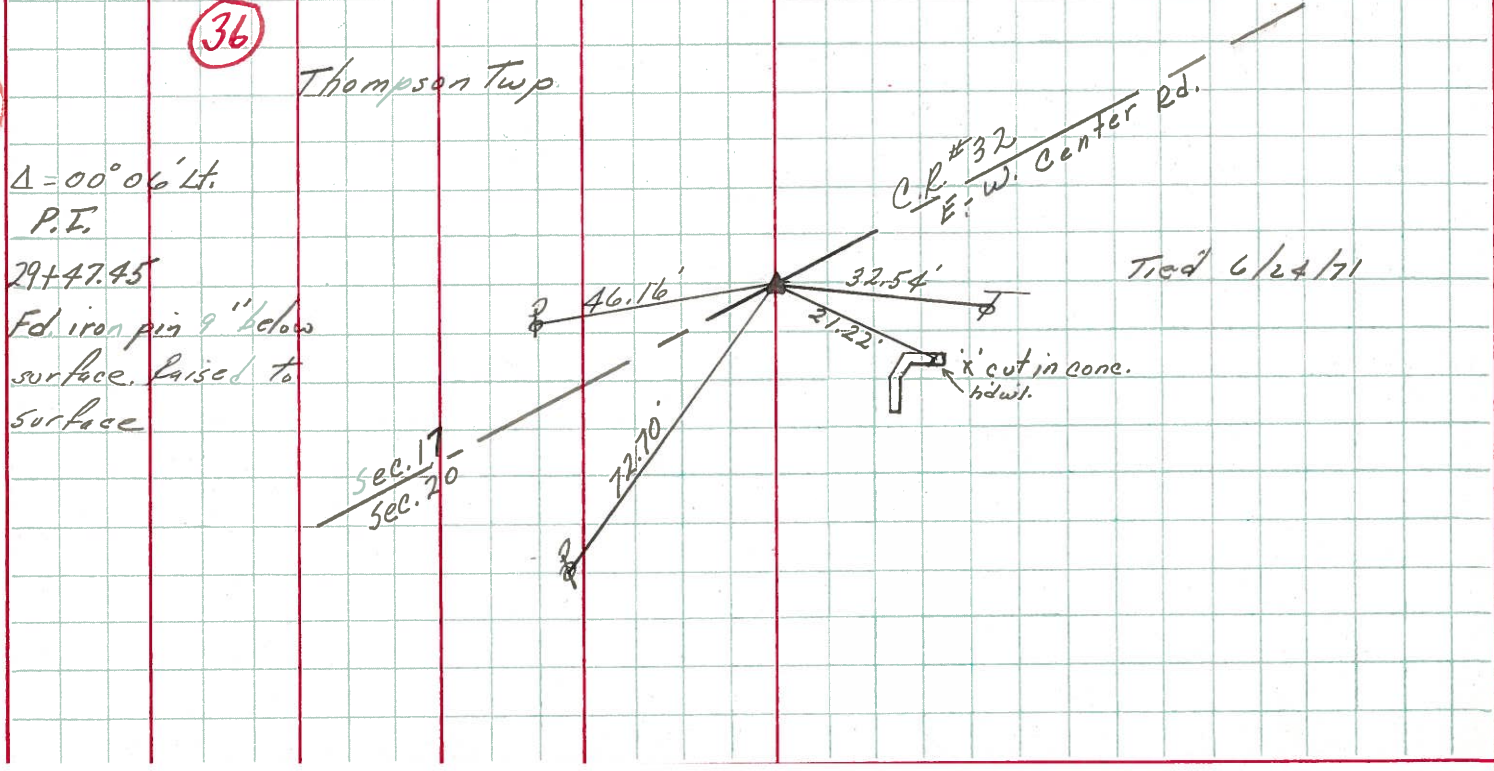
DESCRIPTION Ties for Control Points - Republic to Sandusky Co. Line JOB NO. \_\_\_\_\_

97



$\Delta = 1^{\circ}00' Lt.$   
 P.I.  
 42+98.03  
 Fd. iron pin  $3\frac{1}{2}$ " below surface. Set small spike at top,  $\epsilon$  on surface

95



$\Delta = 00^{\circ}06' Lt.$   
 P.E.  
 29+47.45  
 Fd. iron pin 9" below surface. Raised to surface

Thompson Twp  
 C.R. #32  
 E-W. Center Rd.  
 Tied 6/24/71  
 sec. 17  
 sec. 20  
 'cut in cone. hd. w/it.

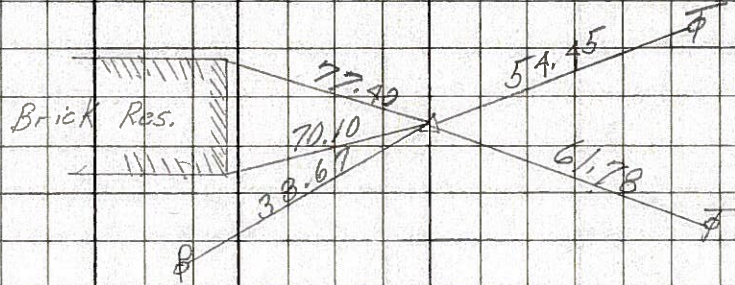


PERSONNEL	TITLE	PERSONNEL	TITLE
Schnäider			
Barbour			
Redding			
Potts			

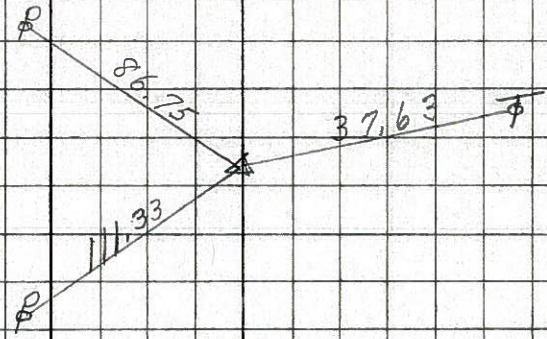
COUNTY Seneca DATE 11-13-68  
 S. R. 18 WEATHER Co. 16 - Windy  
 SEC. Republic to Sen. Co. Line TEMP. 35°

DESCRIPTION Ties for Control Points JOB NO. \_\_\_\_\_  
 LEFT CENTER LINE RIGHT

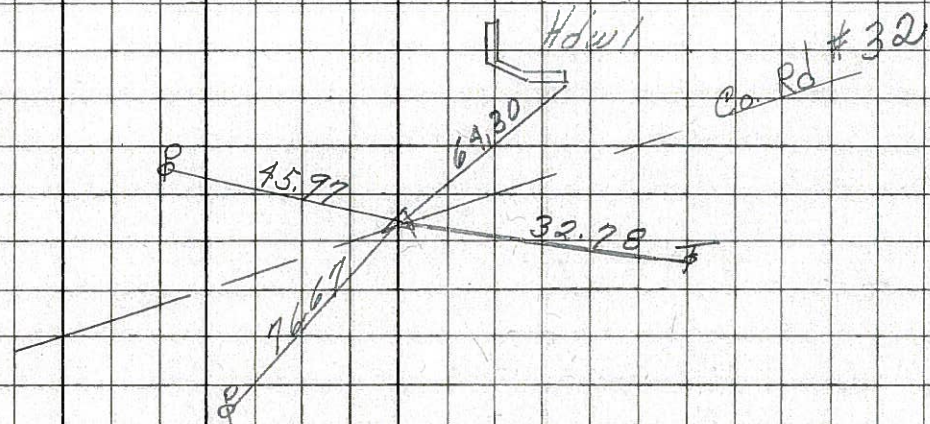
**98**  
 1649 + 79.5  
 $\Delta = 0^\circ 39' Lt.$   
 P. K. Nail  
**8186**



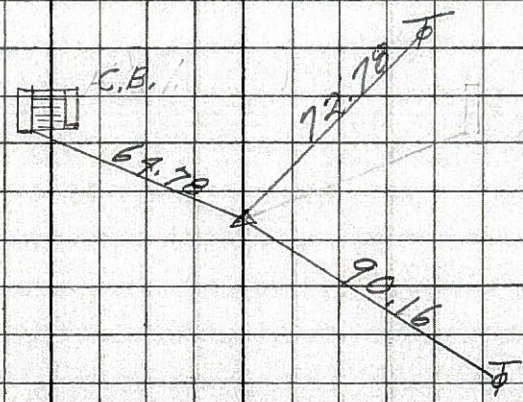
**97**  
 1626 + 58.5  
 $\Delta = 1^\circ 00' Lt.$   
 P. K. Nail  
**8185**



**95**  
 1613 + 57  
 P. K. Nail  
 $\Delta = 0^\circ 06' Lt.$   
**8184**



**94**  
 1599 + 51  
 $\Delta = 0^\circ 49' Lt.$   
 P. K. Nail  
**8183**



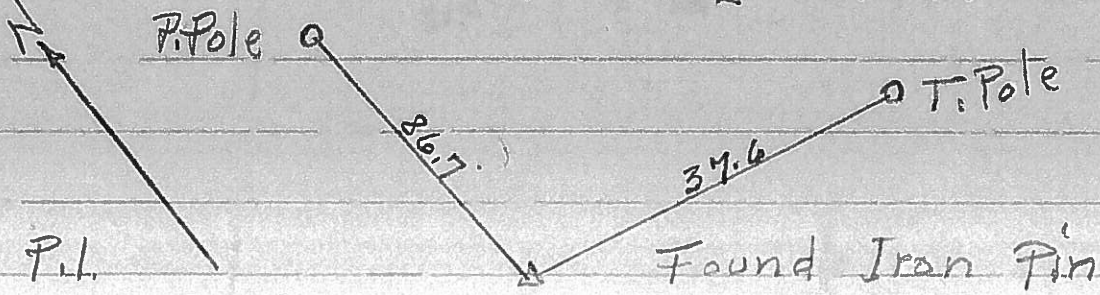


S.R. # 18 Sen. Co. 0+00 at  $\perp$  Co. Road # 32

(97)

No 2

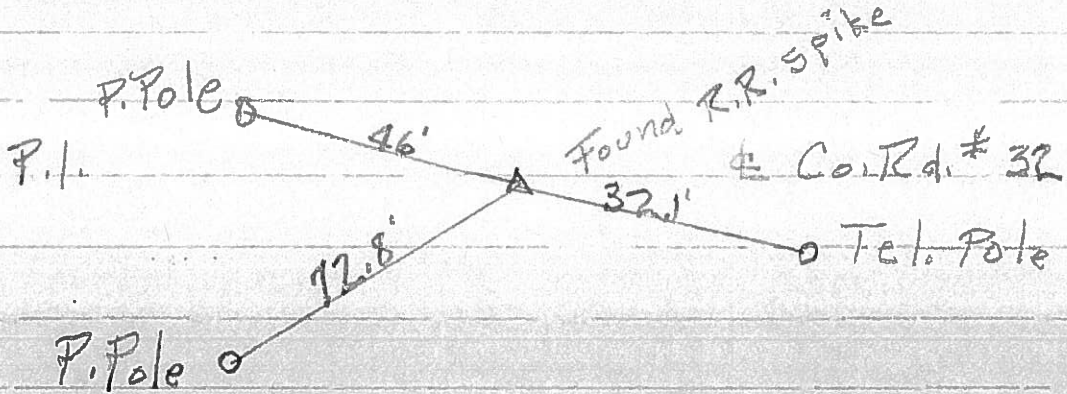
13+41 P.I.



(95)

No 1

0+40.9 P.I.



(101-A)

73+08.5 P.I.

