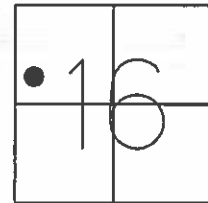


O.D.O.T. DISTRICT 2 SURVEY OFFICE (USE ONLY)

PERSONNEL \_\_\_\_\_ REFERENCE NO. 99 SHEET 5 OF 18

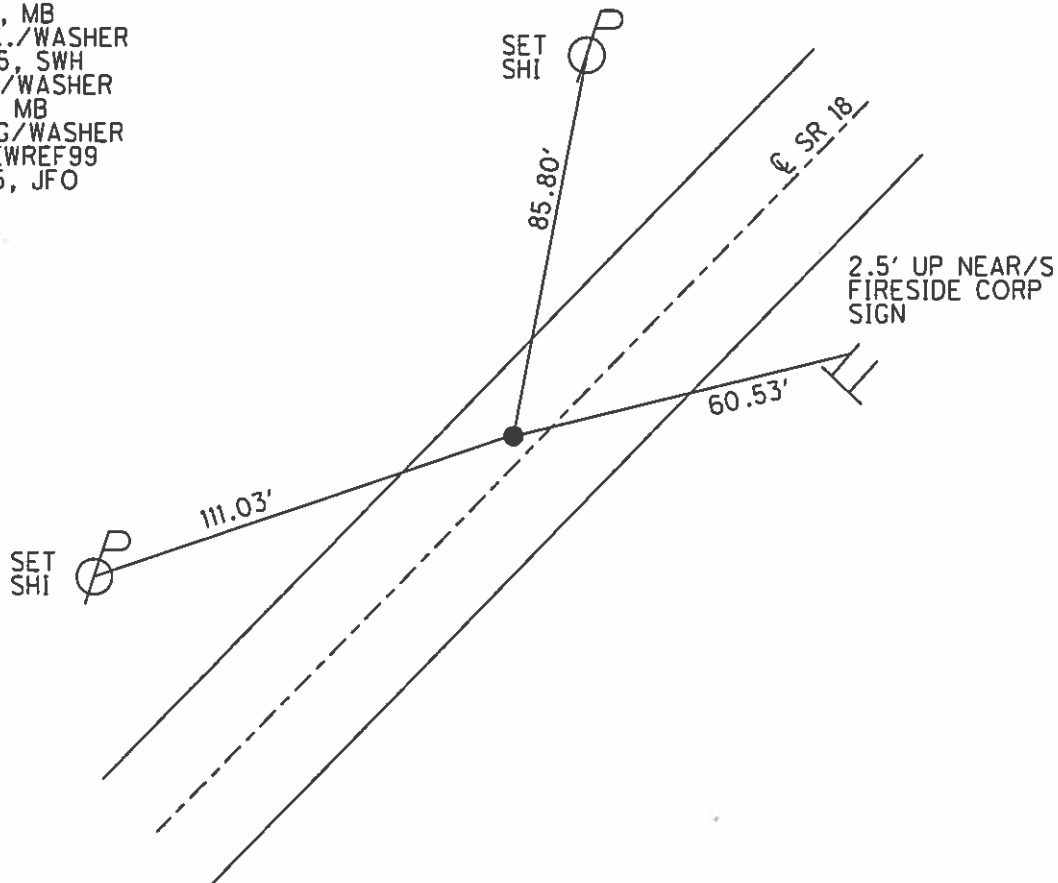
NOTES RHOADES DATE 4/16/15 ROUTE SR 18  
 H.C. WESTFALL WEATHER OVERCAST/WINDY COUNTY SENECA  
 R.C. O'DONNELL TEMP. 60° TOWNSHIP THOMPSON  
 \_\_\_\_\_ SECTION 16  
 \_\_\_\_\_ T 3 N R 17 E

TYPE MONUMENT P.K./WASHER  
~~ON SURFACE~~ - BELOW 0.1'  
 LEFT - ☉ PAV'T - ~~RIGHT~~ 3.1'  
8.1' TO LT EDGE PAVEMENT  
 S.L.M. 1663+28.83



Grid: Northing: 567036.507 Easting: 1853837.052

RECORD: P.I.  
 $\Delta = 1^{\circ}09'$  RT  
 STA. 80+78.70  
 FD P.K./WASHER  
 7/11/85, MB  
 SET P.K./WASHER  
 9/27/85, SWH  
 FD P.K./WASHER  
 8/1/02, MB  
 SET MAG/WASHER  
 GPS, NEWREF99  
 6/30/15, JFO



# O.D.O.T. DISTRICT 2 SURVEY OFFICE

PERSONNEL

REFERENCE NO. 99

SHEET      OF     

NOTES Hoffman

H.C. Loehcke

R.C. BARNHISEK

DATE 7-11-85

WEATHER CLEAR

TEMP. 65°

ROUTE SR 18

COUNTY SENECA

TOWNSHIP THOMPSON

SECTION 16

T3 N R17 E

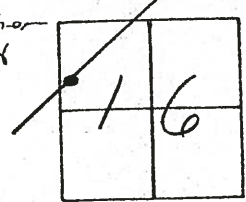
TYPE MONUMENT P.K./WASHER Set Pk/washer  
9-27-85 scok

ON SURFACE - ~~BELOW~~ YES

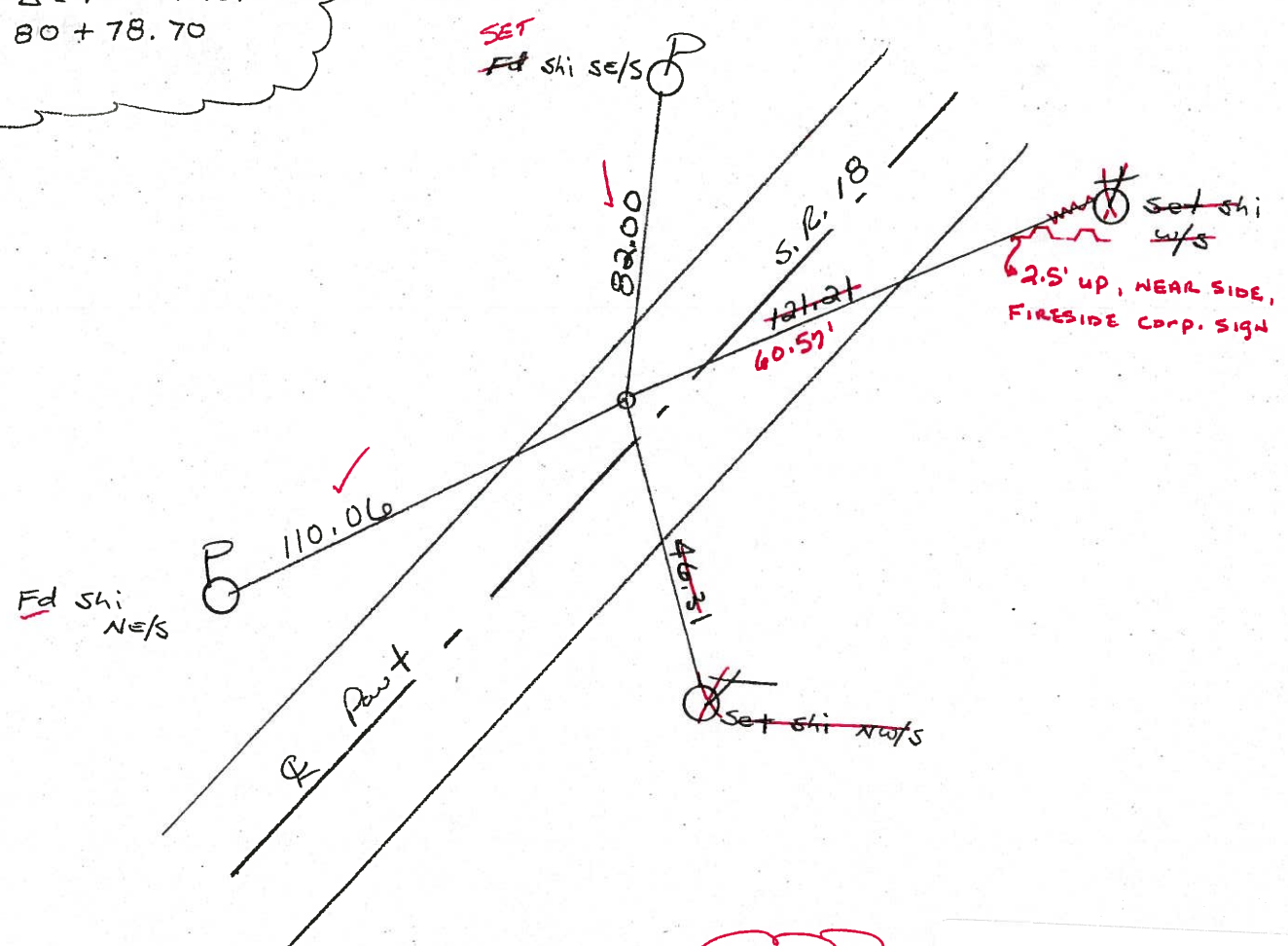
LEFT-~~☉~~ PAV'T. = RIGHT 3.6

6.2 TO LT. EDGE PAVEMENT

S.L.M. 1665+55



RECORD:  
 P.I.  
 $\Delta = 1^{\circ} - 09' RT$   
 80 + 78.70



Fd PK/Washer  
 8-1-02  
 MB

Preventive Maintenance  
 Chip & Seal 2002  
 Existing Point Uncovered  
 Date 12-06-02

# O.D.O.T. DISTRICT 2 SURVEY OFFICE

PERSONNEL

REFERENCE NO. 99

SHEET      OF     

NOTES Hoffman

H.C. LOENKKE

R.C. BARNHISEL

DATE 7-11-85

WEATHER CLEAR

TEMP. 65°

ROUTE SR 18

COUNTY SENECA

TOWNSHIP THOMPSON

SECTION 16

T3 N R 17 E

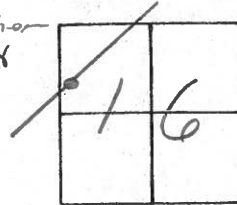
TYPE MONUMENT P.K./WASHER Set P.K./washer

ON SURFACE - ~~BELOW~~ YES 9-27-85 SWH

LEFT- & PAV'T. = ~~RIGHT~~ 3, 6

6.2 TO LT. EDGE PAVEMENT

S.L.M. 1665+55

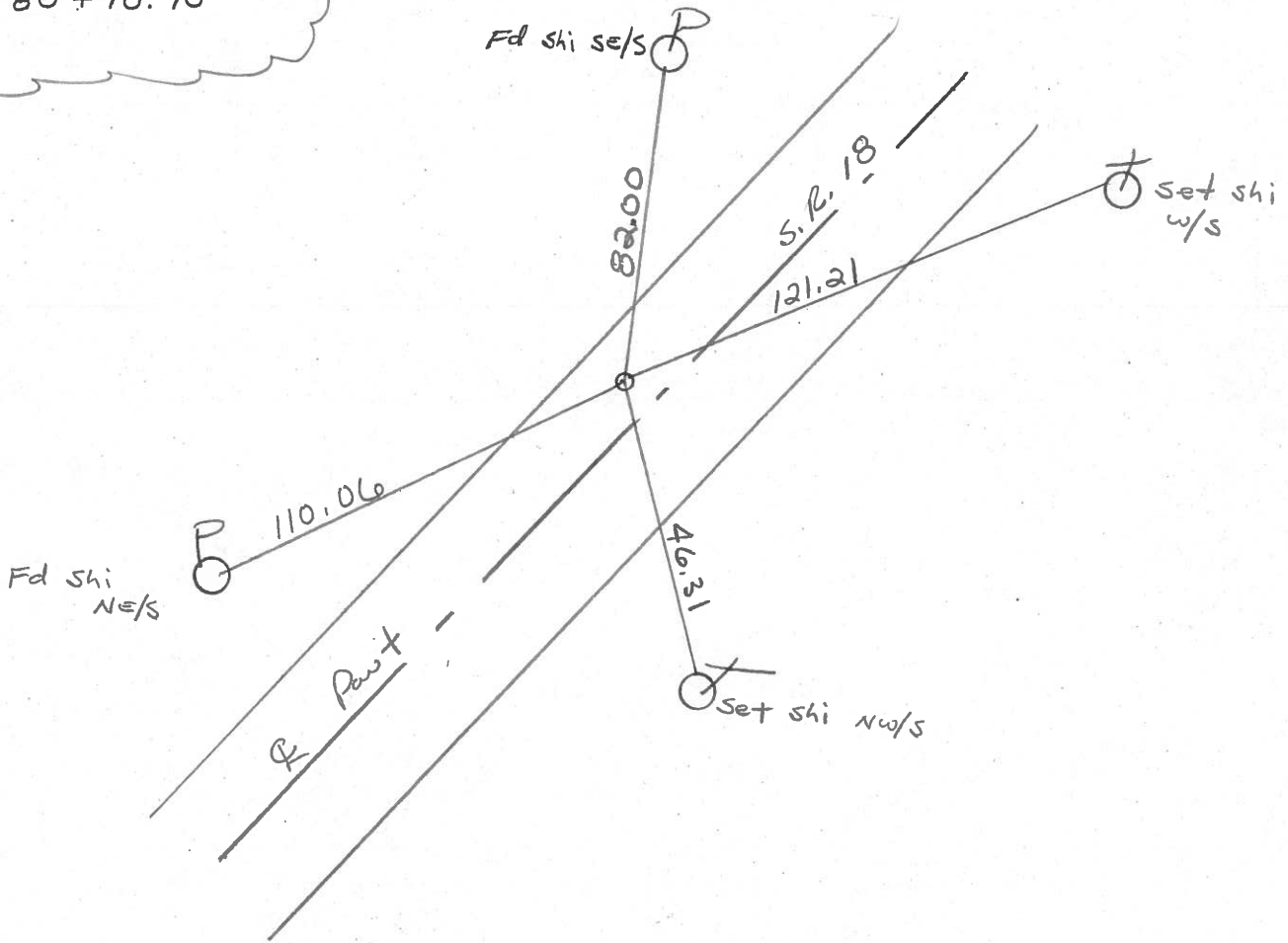


RECORD:

P.I.

$\Delta = 1^{\circ} - 09' RT$

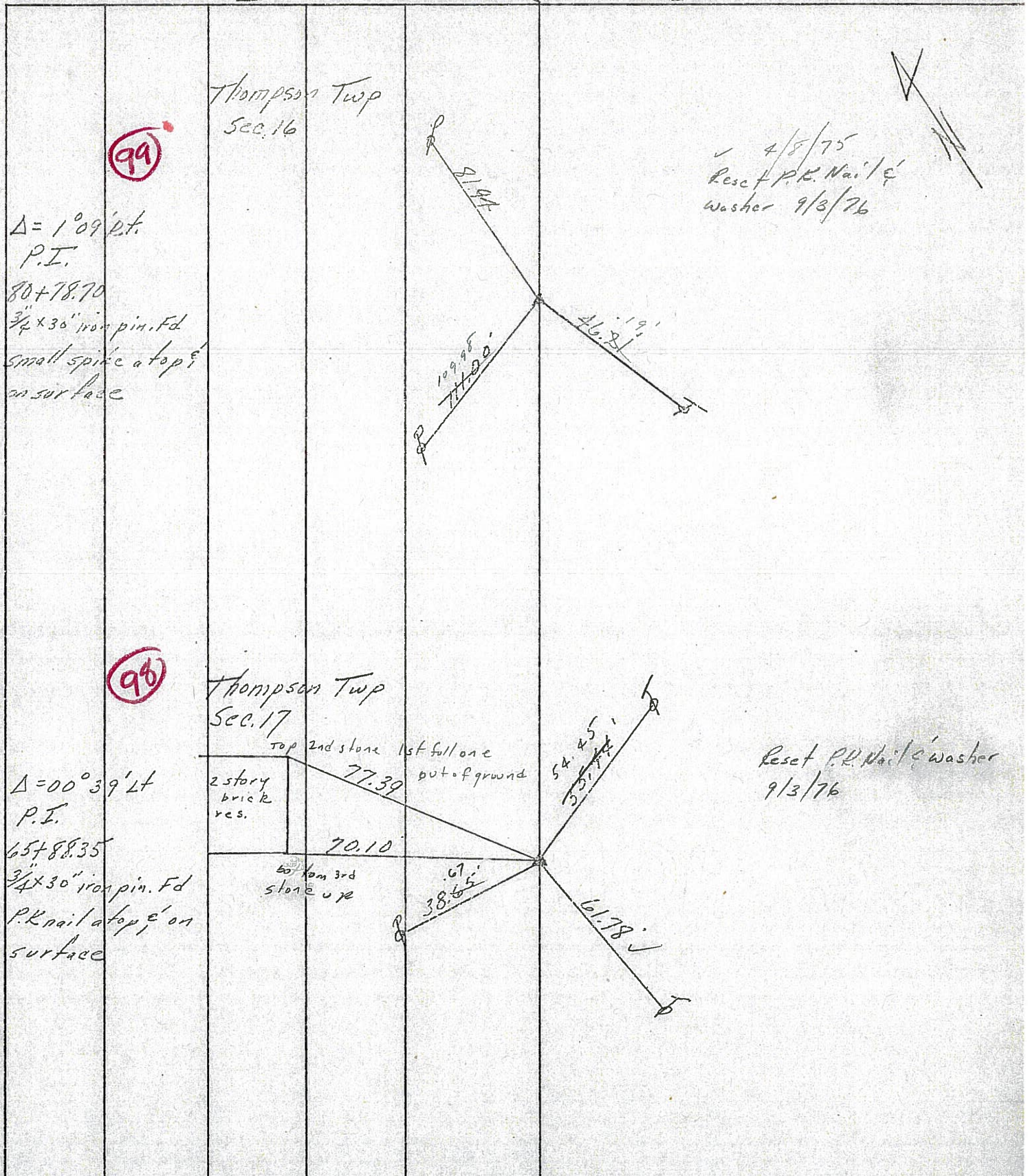
80 + 78.70





PERSONNEL	TITLE	PERSONNEL	TITLE	COUNTY	DATE
Ash				Seneca	11/21/72
Cromin				S. R. #18 (S.H. #267)	WEATHER overcast
Ripple				SEC. Q R-1 & L-2	TEMP. 35°
Anderson					

DESCRIPTION Ties for Control Points - Republic to Sandusky Co. Line JOB NO.





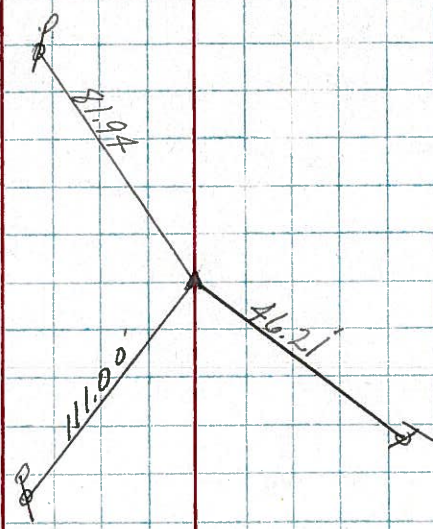
PERSONNEL	TITLE	PERSONNEL	TITLE
Ash			
Cronin			
Ripple			
Anderson			

COUNTY Seneca DATE 11/21/72  
 S. R. #18 (S.H. #267) WEATHER overcast  
 SEC. Q R-1 & R-2 TEMP 35°

DESCRIPTION Ties for Control Points - Republic to Sandusky Co. Line JOB NO. \_\_\_\_\_

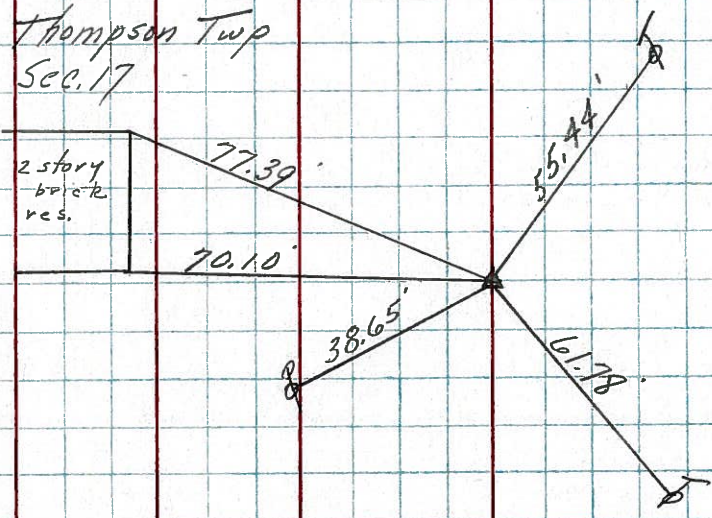
99

Thompson Twp  
 Sec. 16  
 $\Delta = 1^{\circ}09' \text{pt.}$   
 P.I.  
 80+78.70  
 3/4" x 30" iron pin. Fd  
 small spike at top &  
 on surface



98

Thompson Twp  
 Sec. 17  
 2 story  
 brick  
 res.  
 $\Delta = 00^{\circ}39' \text{Lt}$   
 P.I.  
 65+88.35  
 3/4" x 30" iron pin. Fd  
 P.K. nail at top, & on  
 surface





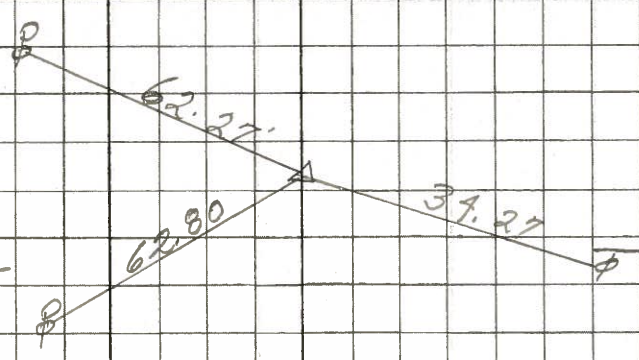
PERSONNEL	TITLE	PERSONNEL	TITLE
Schneider		Potts	
Mosser			
Barbour			
Redding			

COUNTY Seneca DATE 11-14-68  
 S. R. 18 WEATHER Cloudy  
 SEC. Republic to San. Co. Line TEMP. 30°

DESCRIPTION Ties for Control Points JOB NO. \_\_\_\_\_

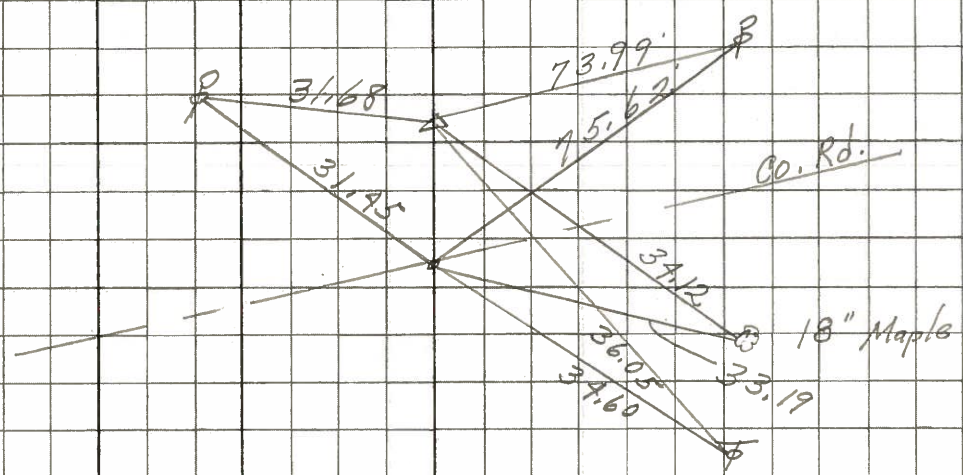
102

1689+82.2  
 $\Delta = 2^{\circ} 14' Pt.$   
 P.K. Nail Lt. of Center  
**8190**



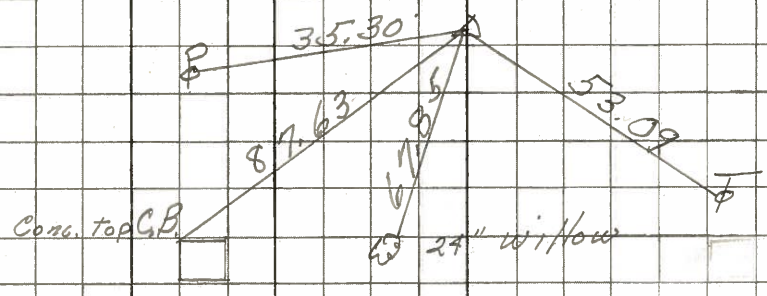
101-A

1686+26.9  
 $\Delta = 1^{\circ} 11' Lt.$   
 2 - P.K. Nails  
**8189**



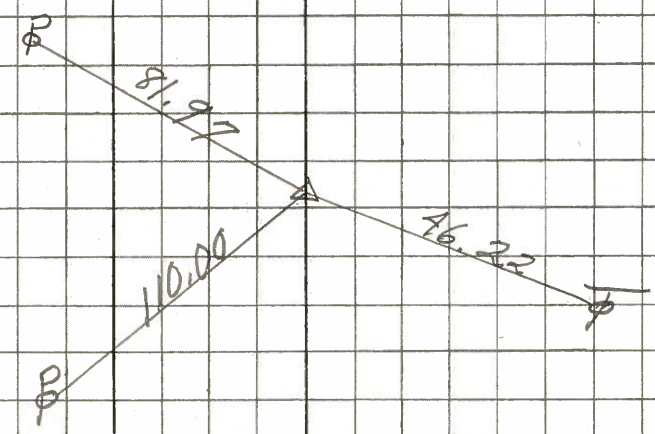
101

1676+92.1  
 $\Delta = 0^{\circ} 22' Lt.$   
 P.K. Nail  
**8188**



100

1664+90.5  
 $\Delta = 1^{\circ} 09' Pt.$   
 P.K. Nail  
**8187**



99