

O.D.O.T. DISTRICT 2 SURVEY OFFICE (USE ONLY)

PERSONNEL _____ REFERENCE NO. 101 SHEET 7 OF 18

NOTES RHOADES DATE 4/16/15 ROUTE SR 18

H.C. WESTFALL WEATHER OVERCAST/WINDY COUNTY SENECA

R.C. O'DONNELL TEMP. 60° TOWNSHIP THOMPSON

SECTION 16

T 3 N R 17 E

TYPE MONUMENT P.K./WASHER

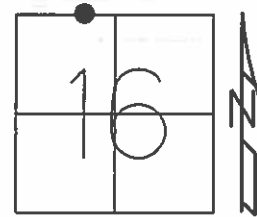
ON SURFACE - ~~BELOW~~ ON

~~LEFT~~ - CL PAV'T - RIGHT 1.0'

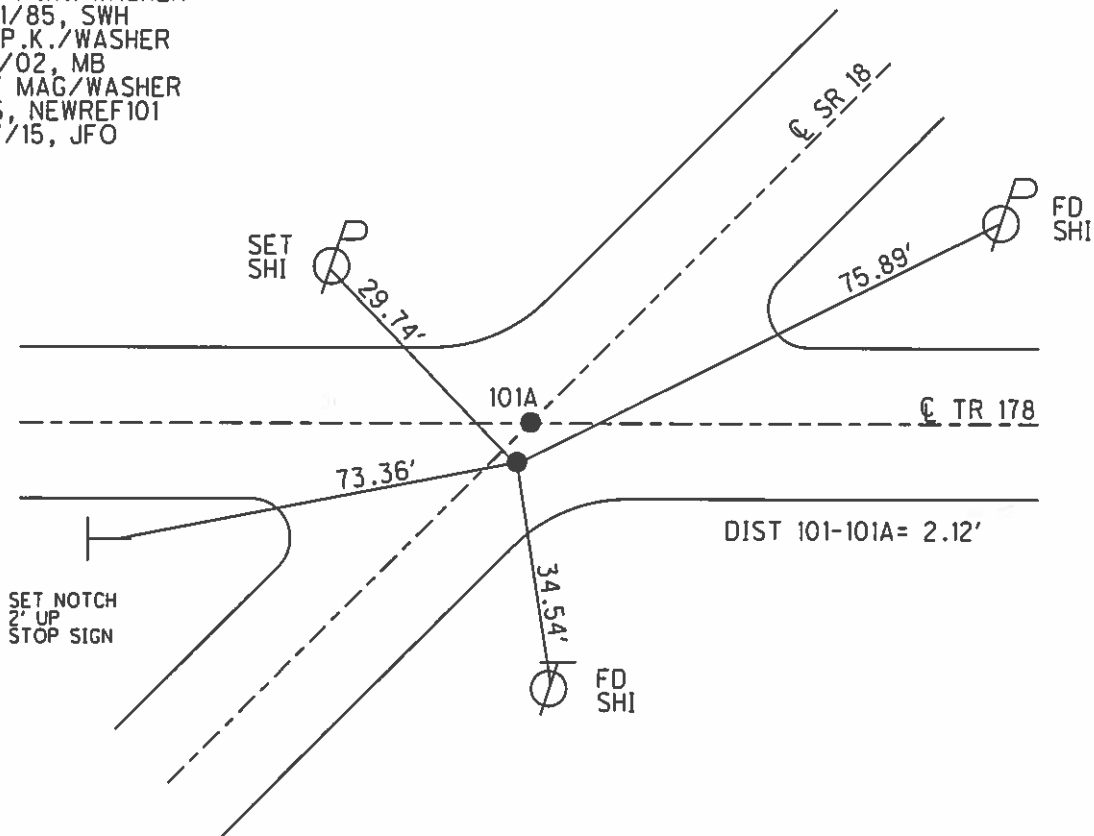
- TO - EDGE PAVEMENT

S.L.M. 1684+62.93

Grid: Northing: 568564.933 Easting: 1855326.464



RECORD:
 FD HINGE NAIL
 2 3/4" BELOW
 1972, J.CRONIN
 FD P.K./WASHER
 7/11/85, MB
 SET P.K./WASHER
 10/1/85, SWH
 FD P.K./WASHER
 8/1/02, MB
 SET MAG/WASHER
 GPS, NEWREF101
 7/7/15, JFO



O.D.O.T. DISTRICT 2 SURVEY OFFICE

PERSONNEL _____

REFERENCE NO. 101

SHEET _____ OF _____

NOTES Hoffman

H.C. LOCHKE

R.C. BARNHISEL

DATE 7-11-85

WEATHER CLEAR

TEMP. 65°

ROUTE SR 18

COUNTY SENECA

TOWNSHIP THOMPSON

SECTION 16

T3 NR 17 E

TYPE MONUMENT P.K.¹⁰/WASHERS

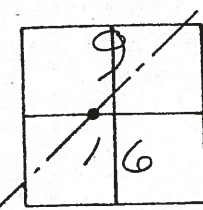
ON SURFACE - BELOW YES

LEFT- & PAW'T. - RIGHT 1.0

TO EDGE PAVEMENT

S.L.M. 1686+93

Set P.K./WASHER
@ BOTH POINTS
10-1-85 SWM



RECORD:

North Point:

P.I.

$\Delta = 10-11' Lt.$

102+15.41

South Point:

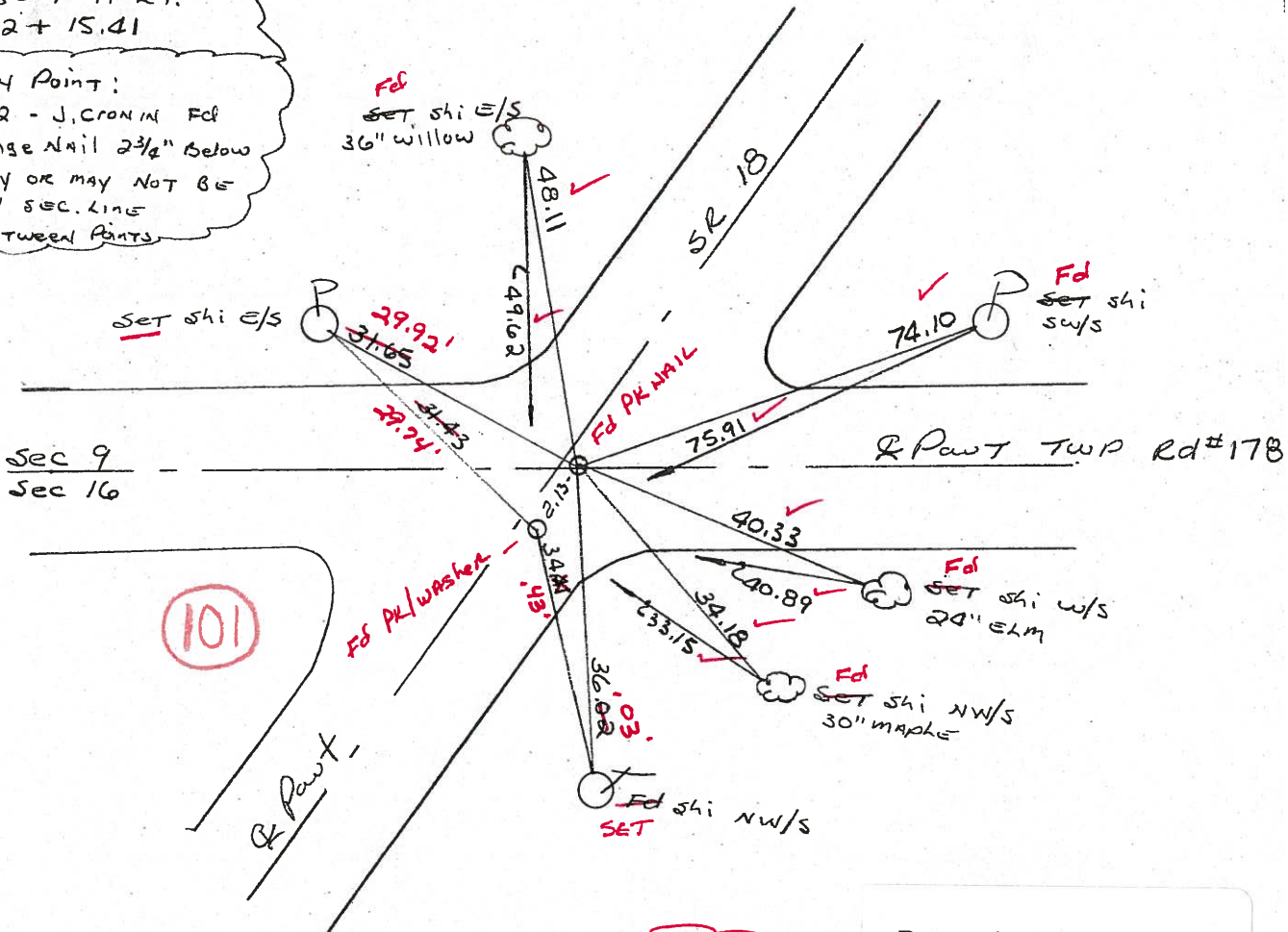
1972 - J. CRAMIN Fd

Hinge Nail 2 3/4" Below

MAY OR MAY NOT BE

ON SEC. LINE

2.13' BETWEEN POINTS



8-1-02
MB

Preventive Maintenance
Chip & Seal 2002
Existing Point Uncovered
Date 12-06-02

O.D.O.T. DISTRICT 2 SURVEY OFFICE

PERSONNEL

REFERENCE NO. 101

SHEET OF

NOTES Hoffman

H.C. LOCHKE

R.C. BARNHISEL

DATE 7-11-85

WEATHER CLEAR

TEMP. 65°

ROUTE SR 18

COUNTY SENECA

TOWNSHIP THOMPSON

SECTION 16

T. 3 N R. 17 E

TYPE MONUMENT P.K.¹⁰/WASHERS

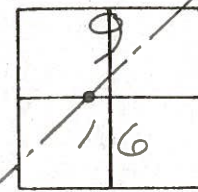
ON SURFACE - BELOW YES

~~LEFT~~ & PAW'T. - RIGHT 1.0

 TO EDGE PAVEMENT ON & PAW'T Rd #178 WEST

S.L.M. 1686+93

Set P.K./WASHER @ BOTH POINTS 10-1-85 SWA



Record:

North Point:

P.I.

$\Delta = 10-11' Lt.$

102 + 15.41

South Point:

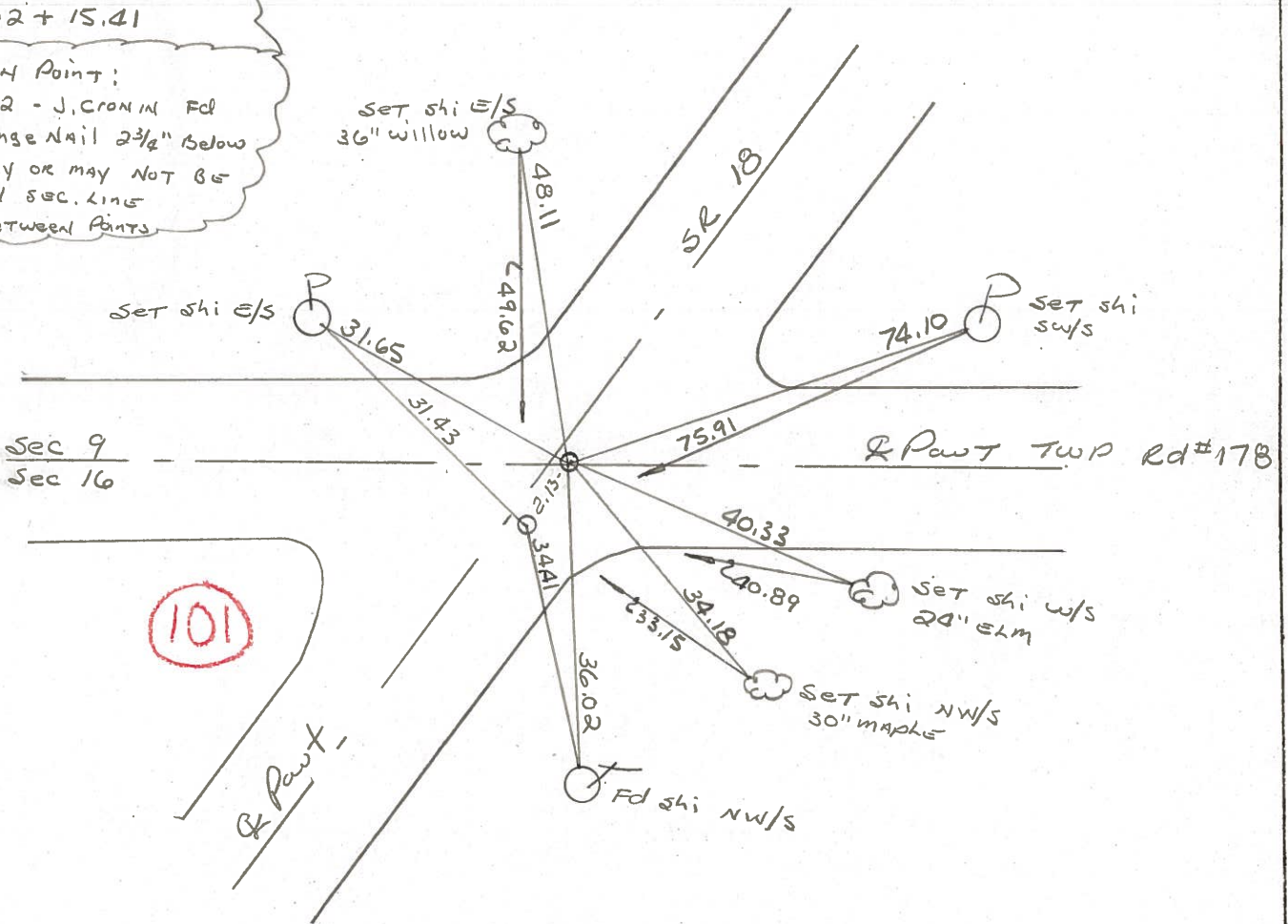
1972 - J. Cronin Fd

Hinge Nail 2 3/4" Below

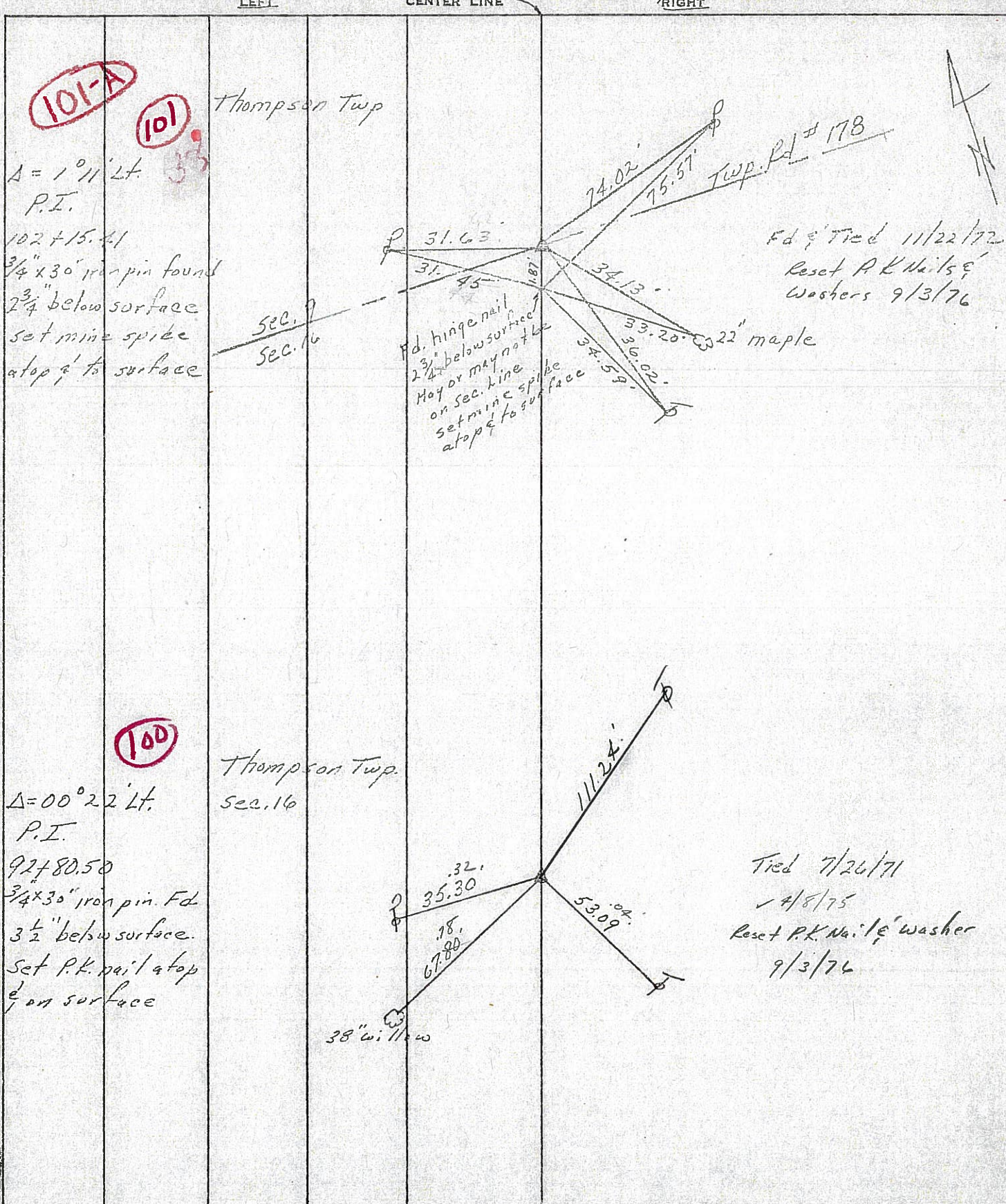
MAY OR MAY NOT BE

ON SEC. LINE

2.13' BETWEEN POINTS



PERSONNEL	TITLE	PERSONNEL	TITLE	COUNTY	Seneca	DATE	11/22/72
Ash				S. R.	#18 (S.H. 267)	WEATHER	sunny
Cranin				SEC.	P-1 & P-2	TEMP.	34°
Rypale				DESCRIPTION <i>Ties for Control Points - Republic to Sandusky Co. Line</i>			
Anderson				JOB NO.			



PERSONNEL TITLE PERSONNEL TITLE

Ash
Cronin
Ripple
Anderson

COUNTY Seneca

DATE 11/22/72

S. R. #18 (S.H. #267)

WEATHER sunny

SEC. P R-1 & R-2

TEMP. 34°

DESCRIPTION Ties for Control Points - Republic to Sandusky Co. Line JOB NO.

LEFT

CENTER LINE

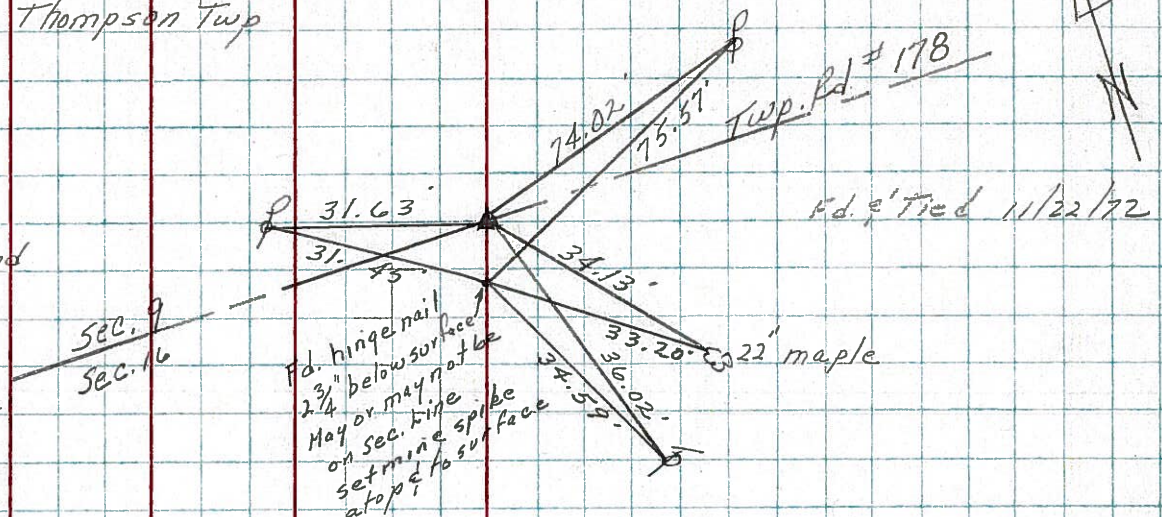
RIGHT

38 Thompson Twp

101-A

$\Delta = 1^{\circ}11' Lt.$
P.I.

102 + 15.41
3/4" x 30" iron pin found
2 3/4" below surface
set mine spike
atop & to surface



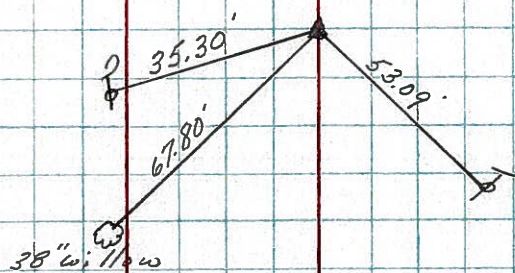
101

100

Thompson Twp
Sec. 16

$\Delta = 00^{\circ}22' Lt.$
P.I.

92 + 80.50
3/4" x 30" iron pin. Fd
3 1/2" below surface.
Set P.K. nail atop
& on surface



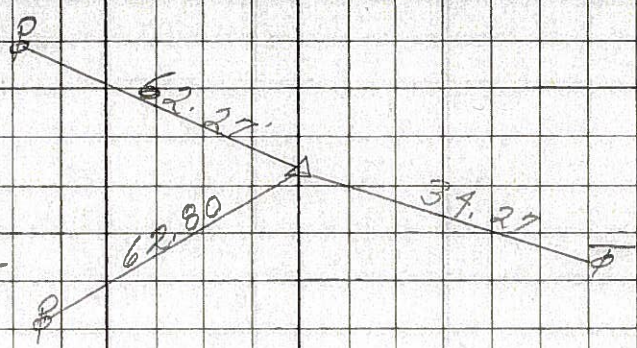
PERSONNEL	TITLE	PERSONNEL	TITLE
Schneider		Potts	
Mosser			
Barbour			
Reddina			

COUNTY Sonoma DATE 11-19-68
 S. R. 18 WEATHER Cloudy
 SEC. Republic to San. Co. Line TEMP. 30°

DESCRIPTION Ties for Control Points JOB NO. _____

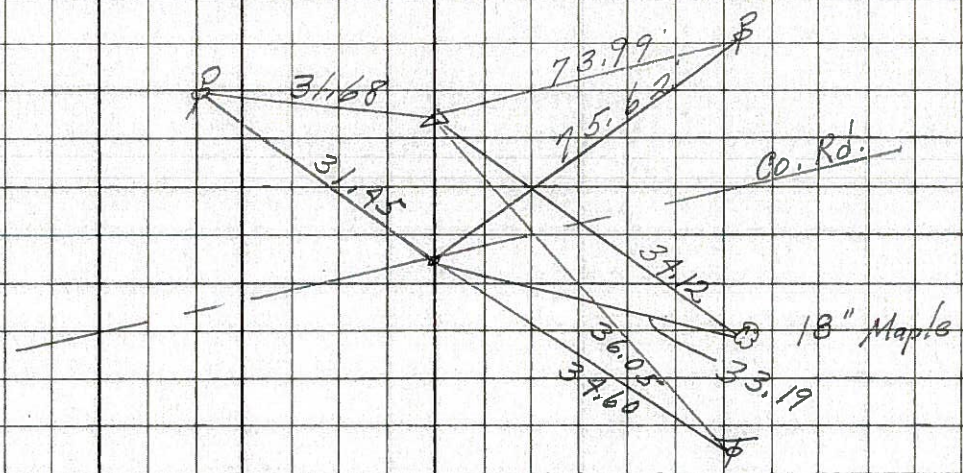
102

1689+82.2
 $\Delta = 2^\circ 14' \text{ Pt.}$
 P.K. Nail Lt. of Center
8190



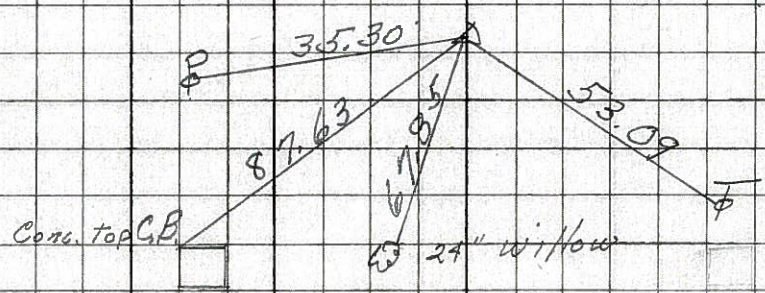
101-A

1686+26.9
 $\Delta = 1^\circ 11' \text{ Lt.}$
 2 - P.K. Nails
8189



101

1676+92.1
 $\Delta = 0^\circ 22' \text{ Lt.}$
 P.K. Nail
8188



100

99

1664+90.5
 $\Delta = 1^\circ 09' \text{ Pt.}$
 P.K. Nail
8187

