

O.D.O.T. DISTRICT 2 SURVEY OFFICE (USE ONLY)

PERSONNEL _____ REFERENCE NO. 101 A SHEET 8 OF 18

NOTES RHOADES DATE 4/16/15 ROUTE SR 18

H.C. WESTFALL WEATHER OVERCAST/WINDY COUNTY SENECA

R.C. O'DONNELL TEMP. 60° TOWNSHIP THOMPSON

SECTION 9

T 3 N R 17 E

TYPE MONUMENT P.K.NAIL

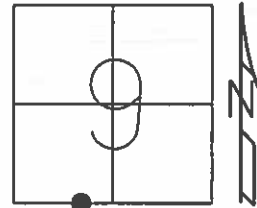
ON SURFACE - ~~BELOW~~ ON _____

~~LEFT~~ - Q PAV'T - RIGHT 1.0'

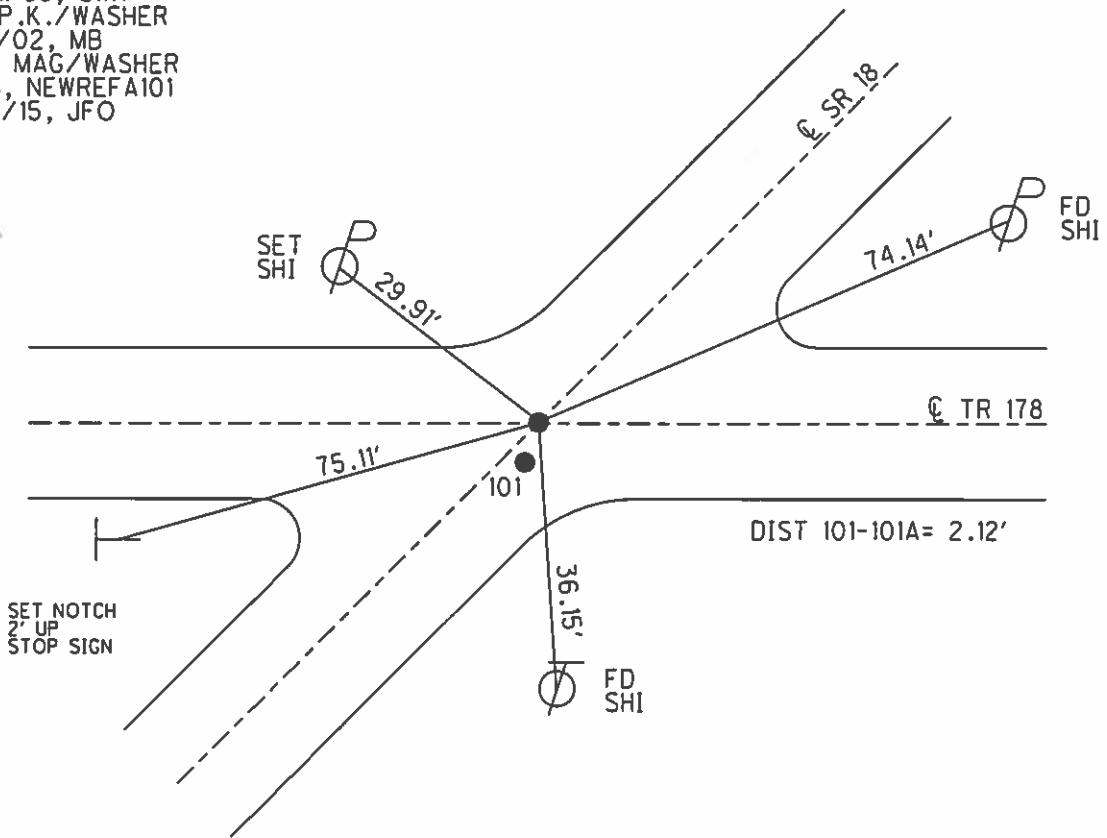
- TO - EDGE PAVEMENT

S.L.M. 1684+65.05

Grid: Northing: 568566.454 Easting: 1855327.967



RECORD: P.I.
 $\Delta = 1^{\circ}11' \text{ LT}$
 STA. 102+15.41
 FD P.K./WASHER
 7/11/85, MB
 SET P.K./WASHER
 10/1/85, SWH
 FD P.K./WASHER
 8/1/02, MB
 SET MAG/WASHER
 GPS, NEWREF A101
 7/7/15, JFO



O.D.O.T. DISTRICT 2 SURVEY OFFICE

PERSONNEL

REFERENCE NO. 101

SHEET OF

NOTES Loffman

H.C. LOCHKE

R.C. BARNHISEL

DATE 7-11-85

WEATHER CLEAR

TEMP. 65°

ROUTE SR 18

COUNTY SENECA

TOWNSHIP THOMPSON

SECTION 16

T3 N R 17 E

TYPE MONUMENT P.K.¹⁰/WASHERS

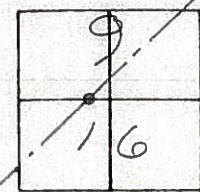
ON SURFACE - BELOW YES

~~LEFT~~ - & PAVT. - RIGHT 1.0

 TO EDGE PAVEMENT ON & PAVT Rd #178 WEST

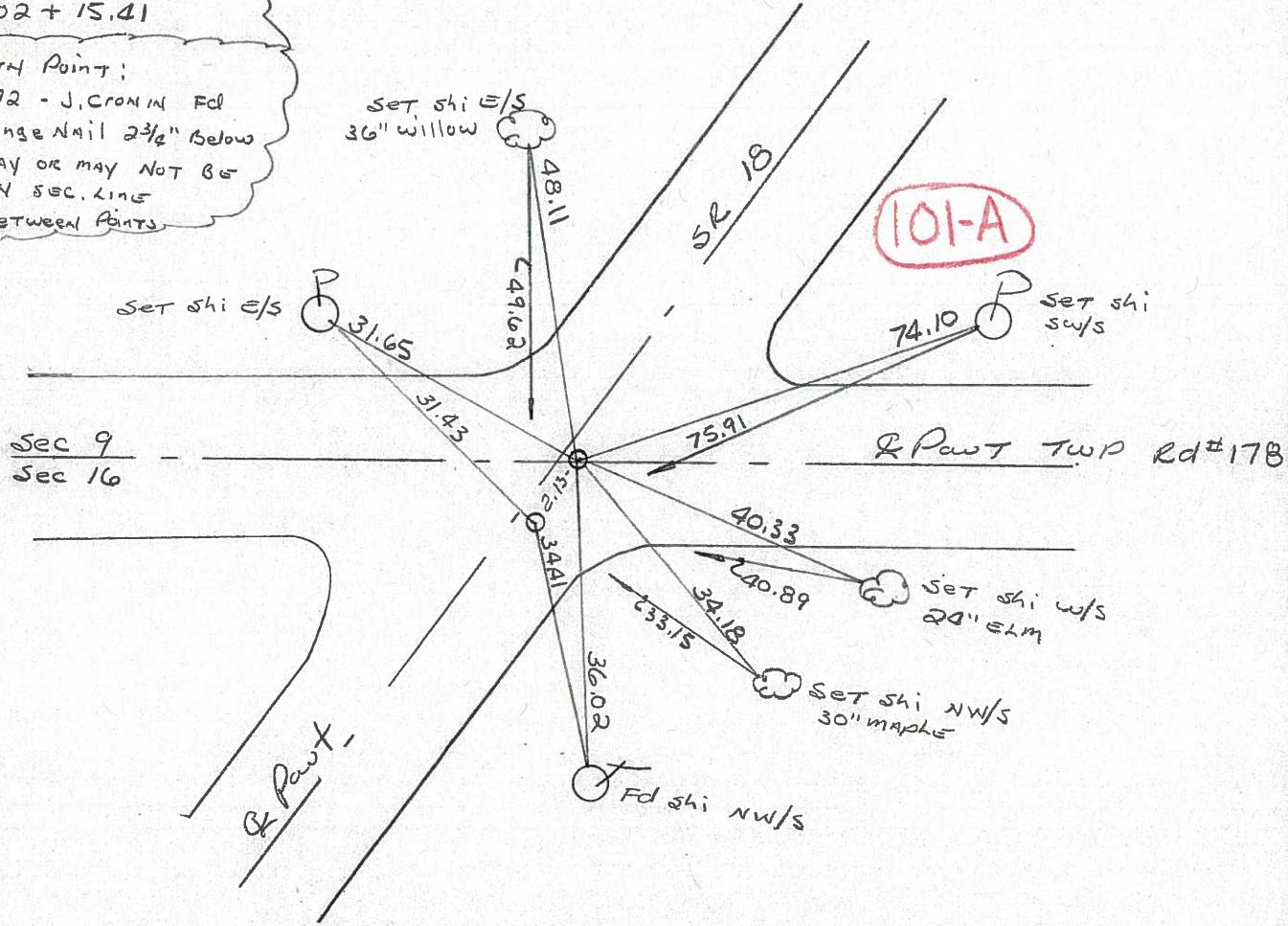
S.L.M. 1686+93

Set P.K./WASHER @ BOTH POINTS 10-1-85 SWD



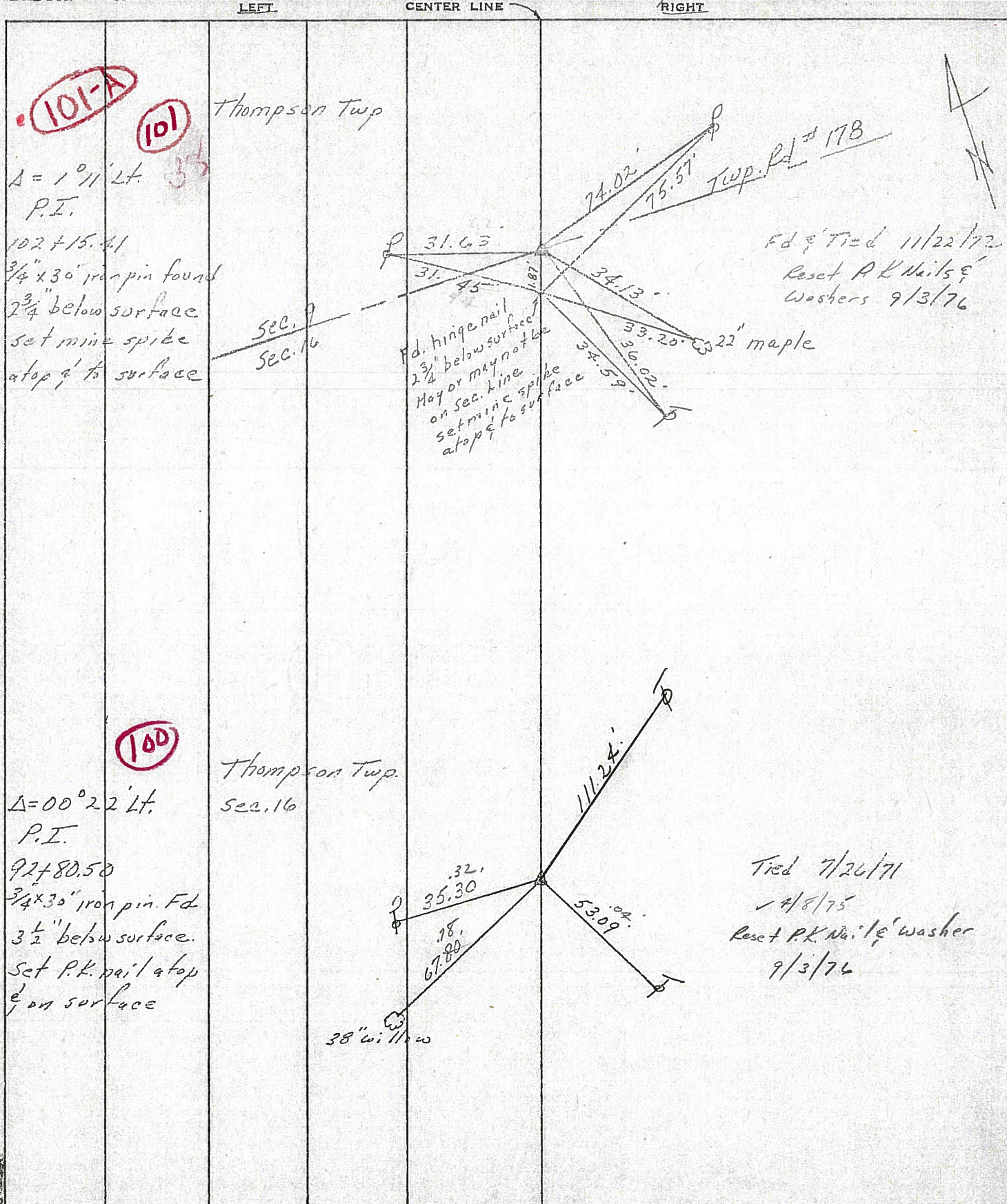
RECORD:
 NORTH POINT:
 P.I.
 Δ = 10-11' LT.
 102 + 15.41

SOUTH POINT:
 1972 - J. CROMM Fd
 Hinge Nail 2 3/4" Below
 MAY OR MAY NOT BE
 ON SEC. LINE
 2.13' BETWEEN POINTS



PERSONNEL	TITLE	PERSONNEL	TITLE	COUNTY	DATE
Ash				Seneca	11/22/72
Cronin				S. R. #18 (S.H. #267)	WEATHER sunny
Epple				SEC. P-1 & P-2	TEMP. 34°
Anderson					

DESCRIPTION Ties for Control Points - Republic to Sandusky Co. Line JOB NO.



PERSONNEL TITLE PERSONNEL TITLE

COUNTY Seneca

DATE 11/22/72

Ash

Cronin

Ripple

Anderson

S. R. #18 (S.H. #267)

WEATHER sunny

SEC. P-1 & P-2

TEMP. 34°

DESCRIPTION Ties for Control Points - Republic to Sandusky Co. line JOB NO.

LEFT

CENTER LINE

RIGHT

38

Thompson Twp

101-A

$\Delta = 1^{\circ} 11' Lt.$

P.I.

102 + 15.41

3/4" x 30" iron pin found

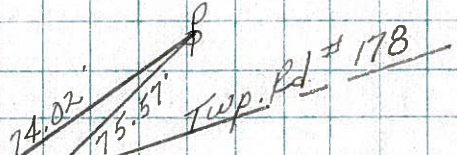
2 3/4" below surface

set mine spike

atop & to surface

SEC. 9
SEC. 16

Fd. hinge nail
2 3/4" below surface
May or may not be
on sec. line
set mine spike
atop & to surface



Fd. & Tied 11/22/72

101

100

Thompson Twp

$\Delta = 00^{\circ} 22' Lt.$

P.I.

92 + 80.50

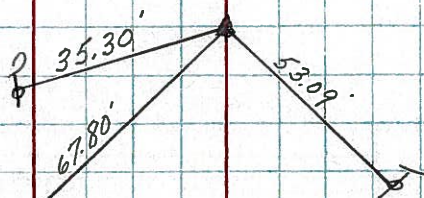
3/4" x 30" iron pin. Fd

3 1/2" below surface.

Set P.K. nail atop

& on surface

sec. 16



Tied 7/26/71

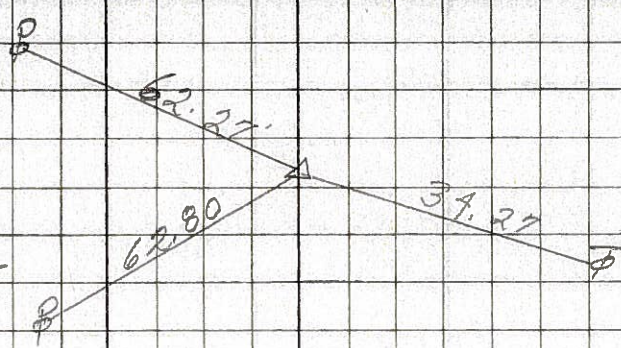
PERSONNEL	TITLE	PERSONNEL	TITLE
Schneider		Potts	
Mosser			
Barbour			
Redding			

COUNTY Seneca DATE 11-19-68
 S. R. 18 WEATHER Cloudy
 SEC. Republic to San. Co. Line TEMP. 30°

DESCRIPTION Ties for Control Points JOB NO. _____

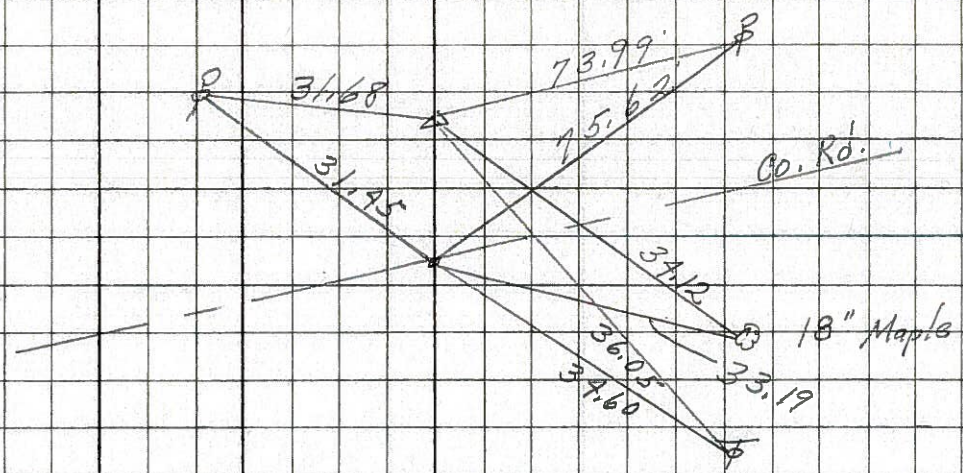
102

1689+82.2
 $\Delta = 2^\circ 14' \text{ Pt.}$
 P.K. Nail Lt. of Center
8190



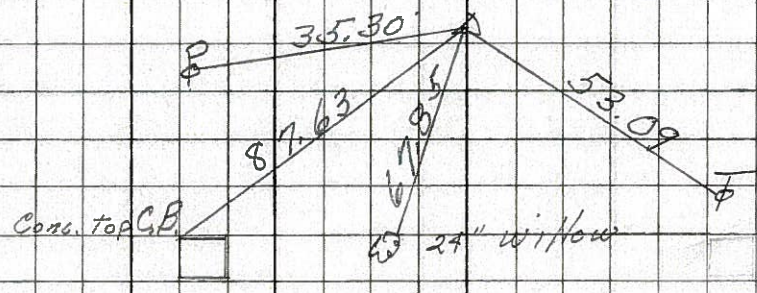
101-A

1686+26.9
 $\Delta = 1^\circ 11' \text{ Lt.}$
 2 - P. K. Nails
8189



101

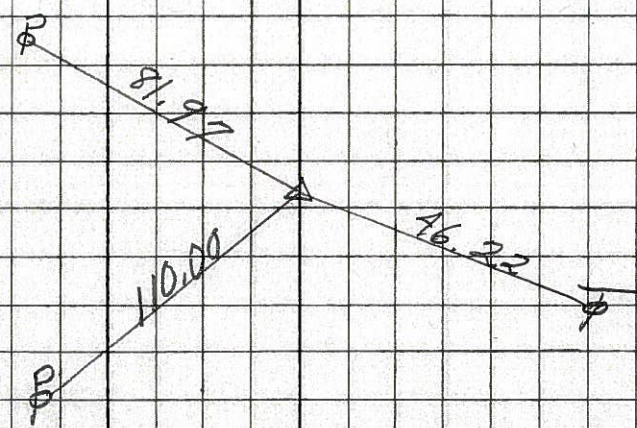
1676+92.1
 $\Delta = 0^\circ 22' \text{ Lt.}$
 P.K. Nail
8188



100

99

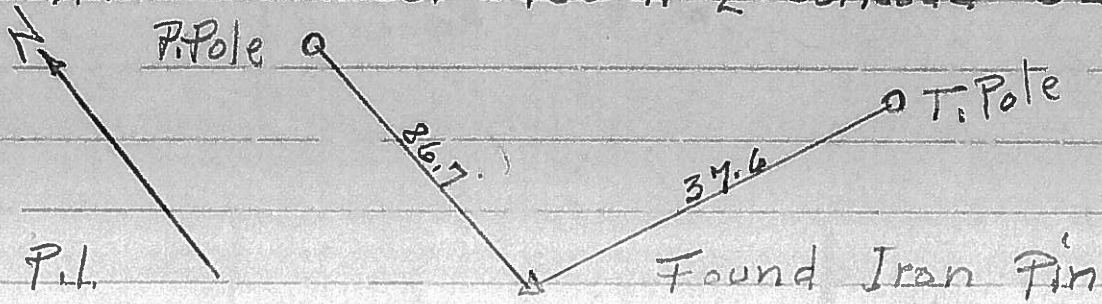
1664+90.5
 $\Delta = 1^\circ 09' \text{ Pt.}$
 P.K. Nail
8187



S.R. # 18 Sen. Co. 0+00 at \perp Co. Road # 32

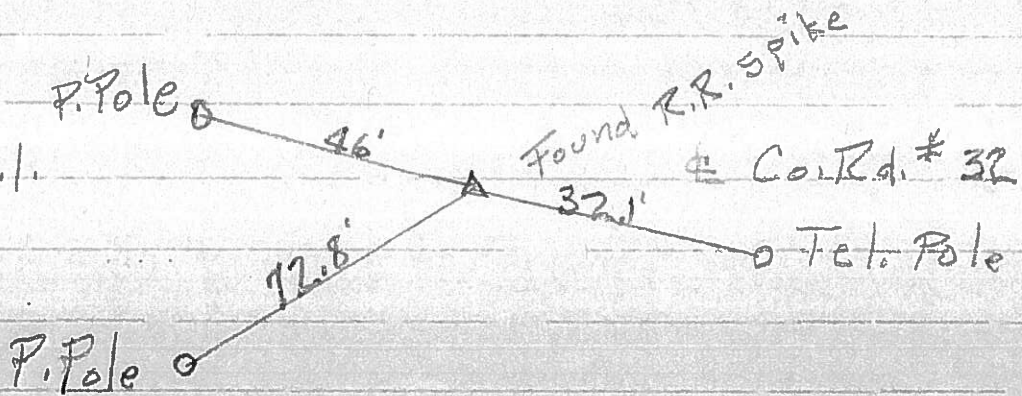
(97)

N=2
13+41 P.I.



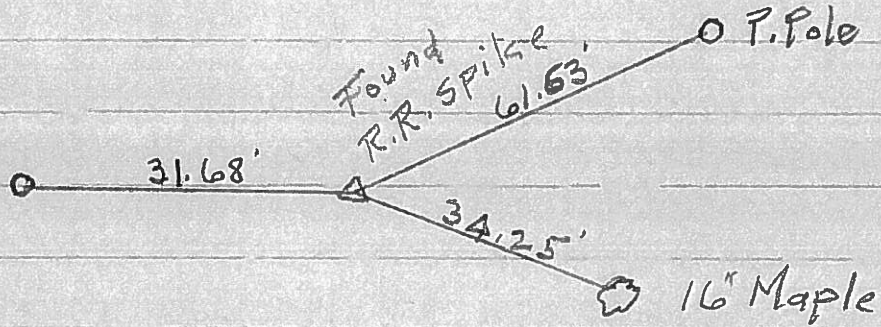
(95)

N=1
0+40.9 P.I.



(101-A)

73+08.5 P.I.



O.D.O.T. DISTRICT 2 SURVEY OFFICE

PERSONNEL _____

REFERENCE NO. 102

SHEET _____ OF _____

NOTES Hoffman

H.C. Loehrke

R.C. BARNHISEL

DATE 7-11-85

WEATHER CLEAR

TEMP. 75°

ROUTE SR 18

COUNTY SENECA

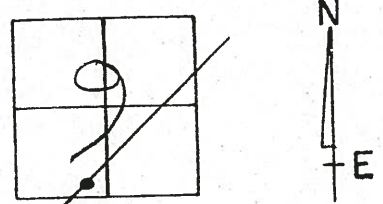
TOWNSHIP THOMPSON

SECTION 9

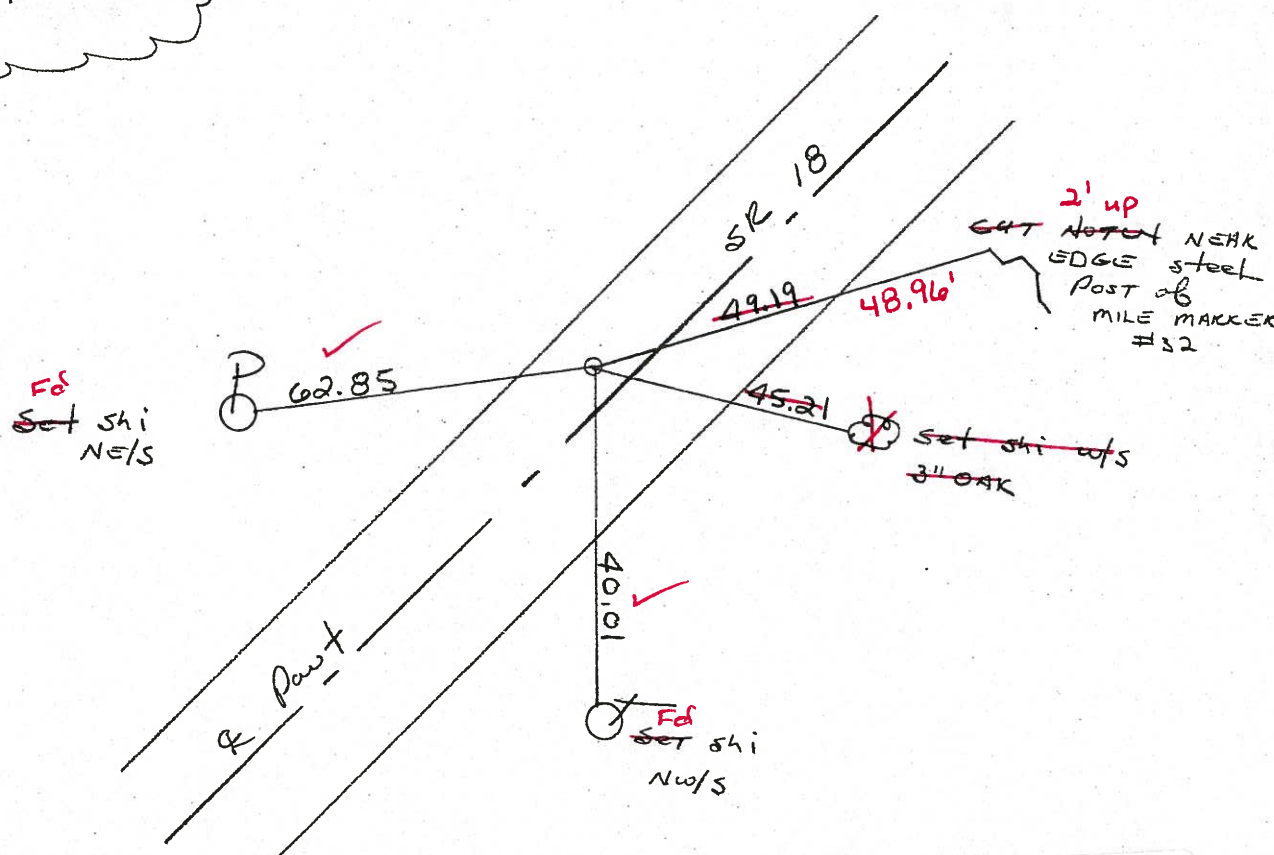
T3 N R 17 E

TYPE MONUMENT P.K.
 ON SURFACE - BELOW YES
 LEFT-☉ PAV'T. - RIGHT 3.6
6.1 TO LT EDGE PAVEMENT
 S.L.M. 1690 + 49

Set P.K./WASHER
10-1-85 SWH



RECORDS:
 P.I.
 $\Delta = 2^\circ - 14' RT.$
 105 + 70.60



Fd PK NAIL
 8-1-02
 MB

Preventive Maintenance
 Chip & Seal 2002
 Existing Point Uncovered
 Date 12-06-02