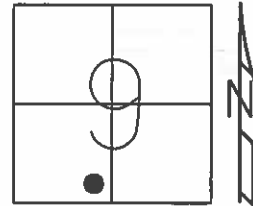


O.D.O.T. DISTRICT 2 SURVEY OFFICE (USE ONLY)

PERSONNEL _____ REFERENCE NO. 102 SHEET 9 OF 18

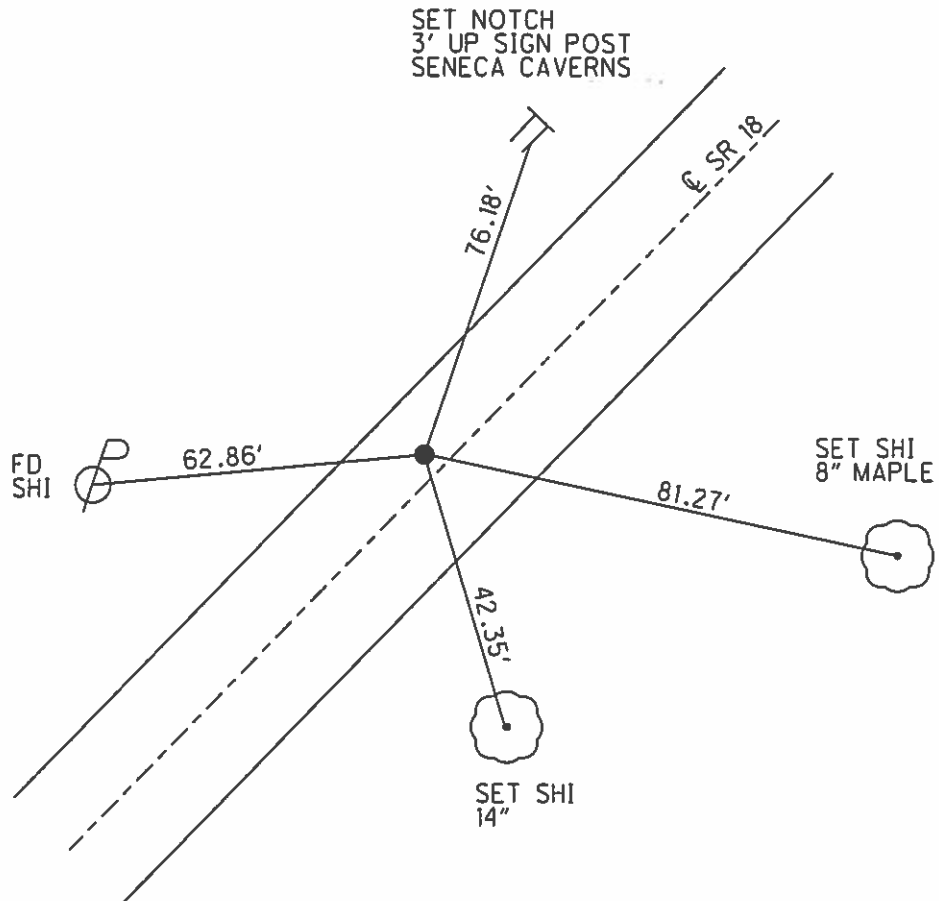
NOTES RHOADES DATE 4/16/15 ROUTE SR 18
 H.C. WESTFALL WEATHER OVERCAST/WINDY COUNTY SENECA
 R.C. O'DONNELL TEMP. 60° TOWNSHIP THOMPSON
 _____ SECTION 9
 _____ T 3 N R 17 E

TYPE MONUMENT P.K.NAIL
 ON SURFACE - ~~BELOW~~ ON _____
 LEFT - ☉ PAV'T - ~~RIGHT~~ 4.2'
7.2' TO LT EDGE PAVEMENT
 S.L.M. 1688+20.34



Grid: Northing: 568826.842 Easting: 1855569.515

RECORD: P.I.
 $\Delta = 2^{\circ}14' RT$
 STA. 1690+49
 FD P.K.NAIL
 7/11/85, MB
 SET P.K./WASHER
 10/1/85, SWH
 FD P.K.NAIL
 8/1/02, MB
 SET MAG/WASHER
 GPS, NEWREF102
 7/7/15, JFO



O.D.O.T. DISTRICT 2 SURVEY OFFICE

PERSONNEL

REFERENCE NO. 102

SHEET OF

NOTES Hoffman

H.C. Loehrke

R.C. BARNHISEL

DATE 7-11-85

WEATHER CLEAR

TEMP. 75°

ROUTE SR 18

COUNTY SENECA

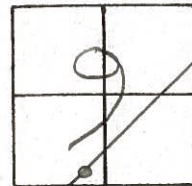
TOWNSHIP THOMPSON

SECTION 9

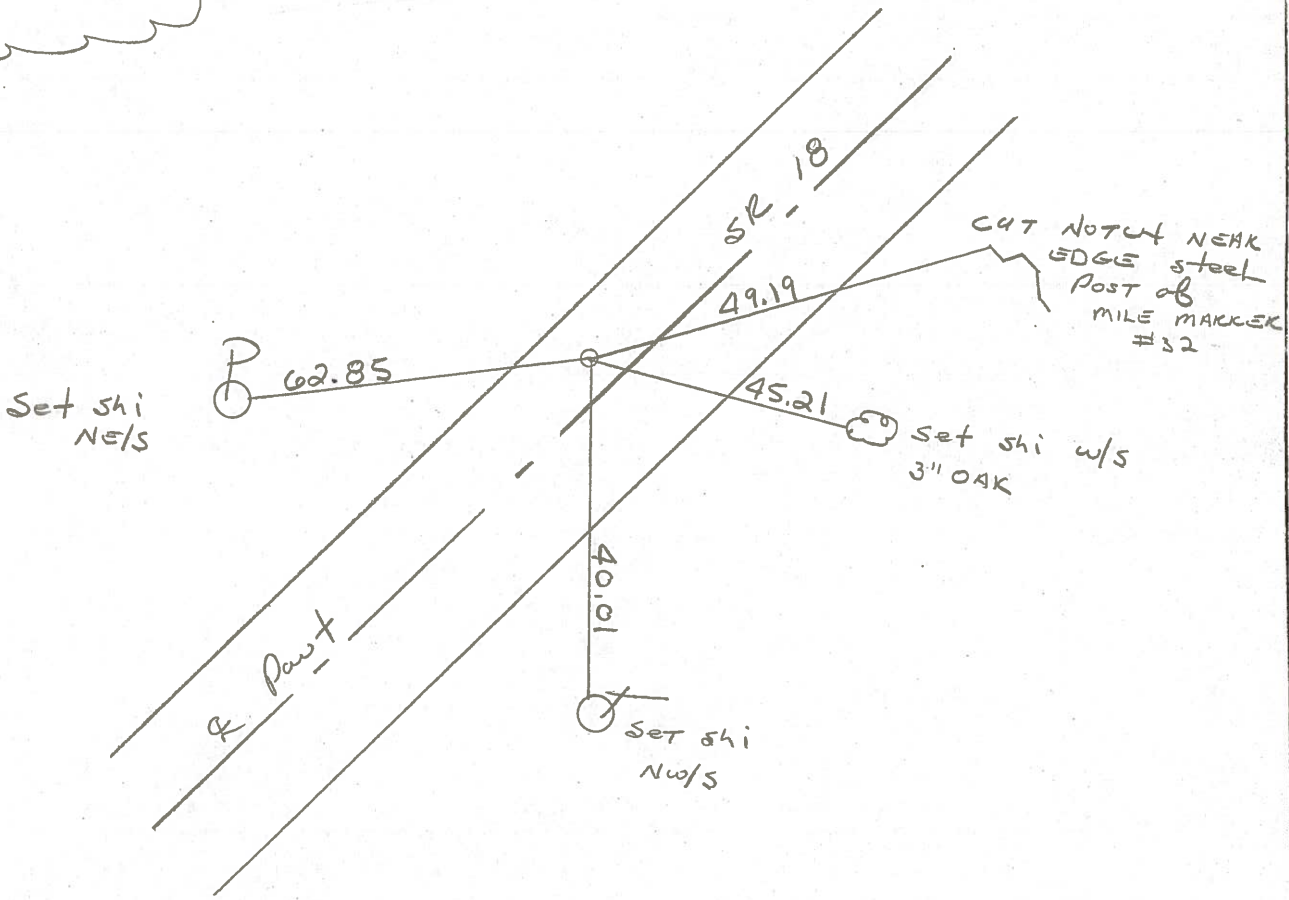
T3 N R 17 E

TYPE MONUMENT P.K.
 ON SURFACE - BELOW YES
 LEFT - & PAV'T. - RIGHT 3.6
6.1 TO LT. EDGE PAVEMENT
 S.L.M. 1690 + 49

Set P.K./WASHER
 10-1-85 SWH



RECORD:
 P.I.
 $\Delta = 2^\circ - 14' RT,$
 105 + 70.60



PERSONNEL TITLE PERSONNEL TITLE

COUNTY Seneca

DATE 11/22/72

Ash

Cronin

Purple

Anderson

S. R. # 18 (S.H. #267)

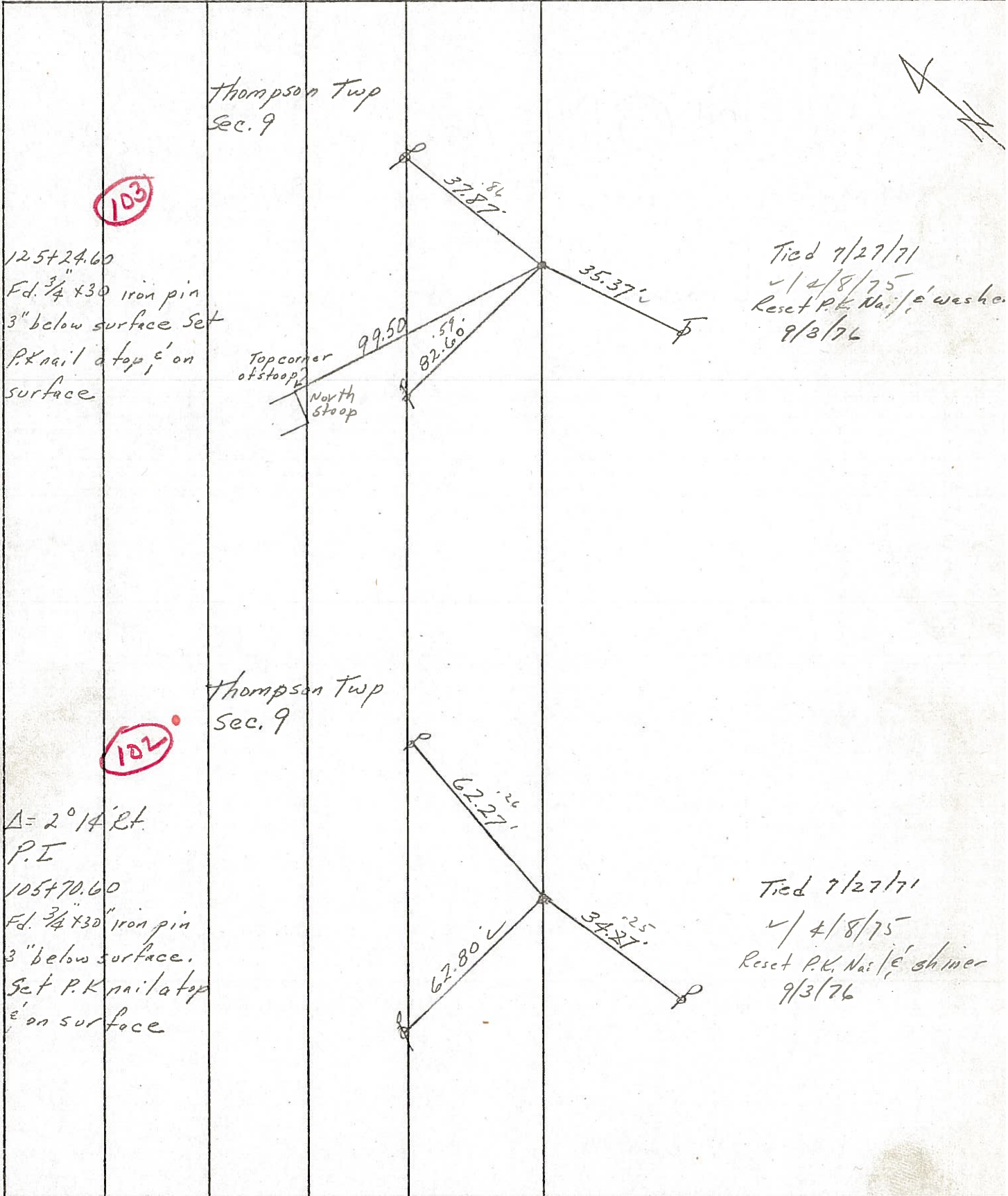
WEATHER cloudy

SEC. Q R-1 & R-2

TEMP. 34°

DESCRIPTION Ties for Control Points - Republic to Sandusky Co Line JOB NO.

LEFT CENTER LINE RIGHT



103

125+24.60
Fd. 3/4 x 30 iron pin
3" below surface Set
P.K. nail at top, e' on
surface

Thompson Twp
Sec. 9

Top corner
of stoop
North
stoop

Tied 7/27/71
✓ 4/8/75
Reset P.K. Nail, e' washed
9/3/76

102

$\Delta = 2^\circ 14' \text{ RT.}$
P.I.
105+70.60
Fd. 3/4 x 30 iron pin
3" below surface.
Set P.K. nail at top
e' on surface

Thompson Twp
Sec. 9

Tied 7/27/71
✓ 4/8/75
Reset P.K. Nail, e' shiner
9/3/76

PERSONNEL	TITLE	PERSONNEL	TITLE
Ash			
Cronin			
Ripple			
Anderson			

COUNTY Seneca DATE 11/22/72

S. R. #18 (S.H. #267) WEATHER cloudy

SEC. R-1 & R-2 TEMP. 34°

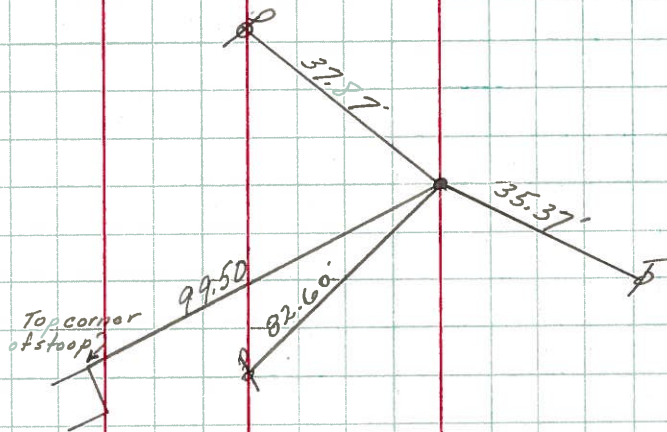
DESCRIPTION Ties for Control Points - Republic to Sandusky Co. Line JOB NO. _____

LEFT CENTER LINE RIGHT

Thompson Twp
Sec. 9

103

125+24.60
 Fd. 3/4" x 30 iron pin
 3" below surface. Set
 P.K. nail at top, & on
 surface.

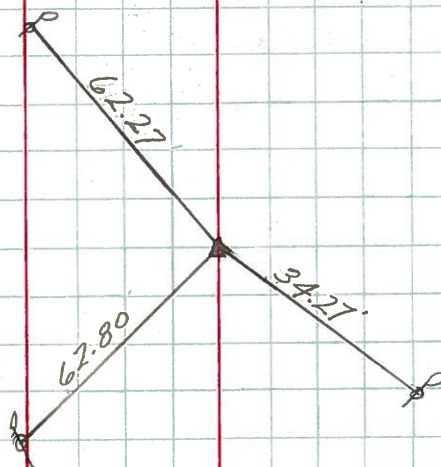


Tied 7/27/71

Thompson Twp
Sec. 9

102

$\Delta = 2^{\circ} 14' RT$
 P.I.
 105+70.60
 Fd. 3/4" x 30" iron pin
 3" below surface.
 Set P.K. nail at top
 & on surface.



Tied 7/27/71

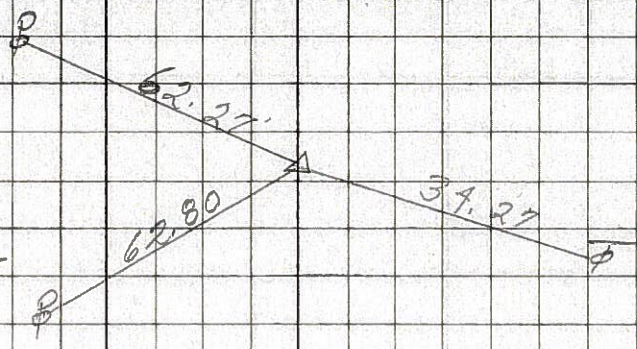
PERSONNEL	TITLE	PERSONNEL	TITLE
Schneider		Potts	
Mosser			
Barbour			
Redding			

COUNTY Seneca DATE 11-14-68
 S. R. 18 WEATHER Cloudy
 SEC. Republic to San. Co. Line TEMP. 30°

DESCRIPTION Ties for Control Points JOB NO. _____

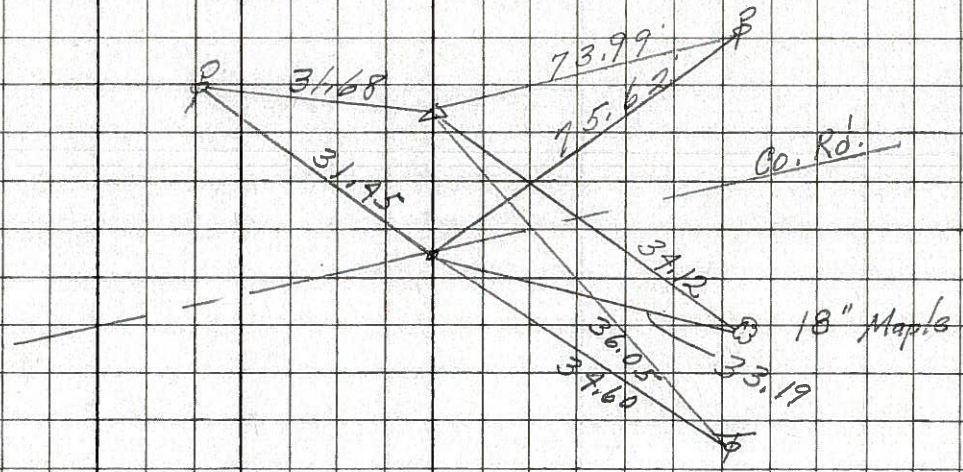
102

1689+82.2
 $\Delta = 2^{\circ} 14' \text{ Rt.}$
 P.K. Nail Lt. of Center
8190



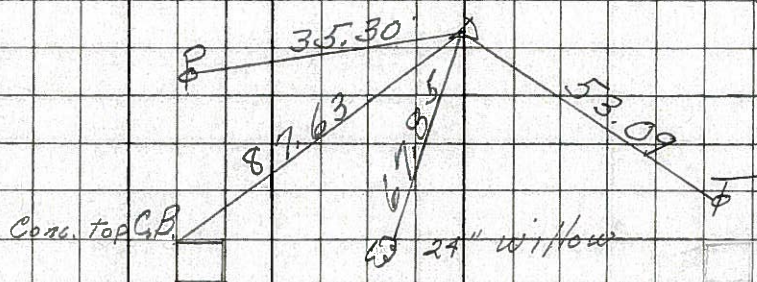
101-A

1686+26.9
 $\Delta = 1^{\circ} 11' \text{ Lt.}$
 2 - P.K. Nails
8189



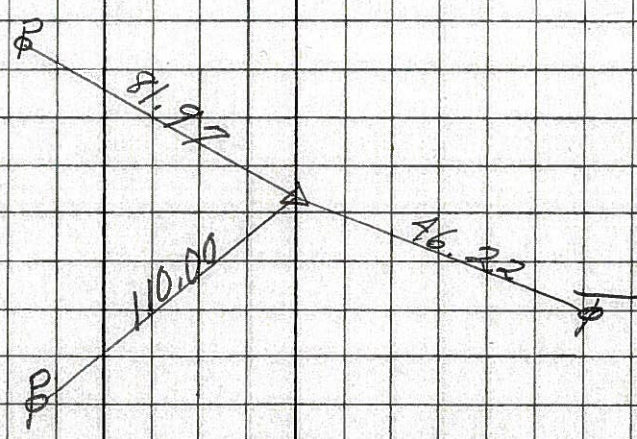
101

1676+92.1
 $\Delta = 0^{\circ} 22' \text{ Lt.}$
 P.K. Nail
8188



100

1664+90.5
 $\Delta = 1^{\circ} 09' \text{ Rt.}$
 P.K. Nail
8187



99

102

76+62.9

P.I.

Found

Iron Pin

P. Pole

Tel. P.

62.88'

40.15'

103

96+16.9

P.I.

P. Pole

Found Iron Pin

Tel. P.

37.94'

82.60'

P. Pole

104

124 + 27.5'

P.I.

Found Iron Pin

P. Pole

Tel. P.

20" Hickory

31.57'

28.44'

84.18'

O.D.O.T. DISTRICT 2 SURVEY OFFICE

PERSONNEL

REFERENCE NO. 103

SHEET OF

NOTES Hoffman

H.C. LOENKKE

DATE 7-11-85

ROUTE SR 18

R.C. BARNHISEL

WEATHER CLEAR

COUNTY SENECA

TEMP. 75°

TOWNSHIP THOMPSON

SECTION 9

T3 NR 17 E

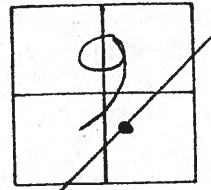
TYPE MONUMENT P.K./WASHER Set P.K./WASHER

ON SURFACE - BELOW yes 10-1-85 SWN

LEFT- & PAV'T. - RIGHT 2.3

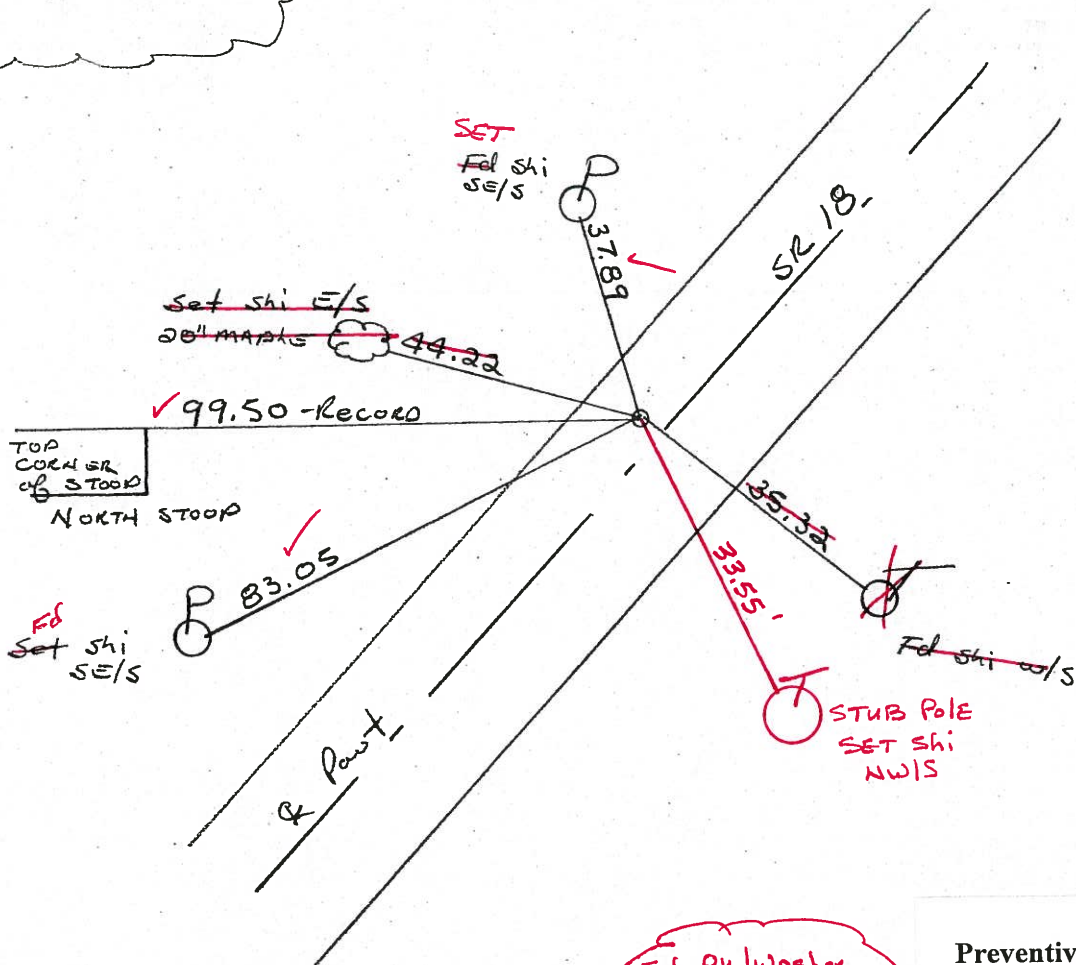
7.4' TO LT. EDGE PAVEMENT

S.L.M. 1710 + 03



RECORD:

125 + 24.60



Fd PK/Washer
 8-1-02
 MPB

Preventive Maintenance
 Chip & Seal 2002
 Existing Point Uncovered
 Date 12-06-02