

O.D.O.T. DISTRICT 2 SURVEY OFFICE (USE ONLY)

PERSONNEL _____ REFERENCE NO. 103 SHEET 10 OF 18

NOTES RHOADES DATE 4/16/15 ROUTE SR 18

H.C. O'DONNELL WEATHER OVERCAST/WINDY COUNTY SENECA

R.C. RHOADES TEMP. 60° TOWNSHIP THOMPSON

SECTION 9

T 3 N R 17 E

TYPE MONUMENT P.K./WASHER

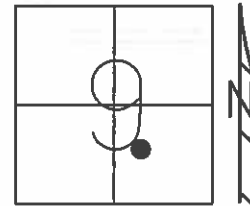
ON SURFACE - ~~BELOW~~ ON _____

LEFT - ☉ PAV'T - ~~RIGHT~~ 2.1'

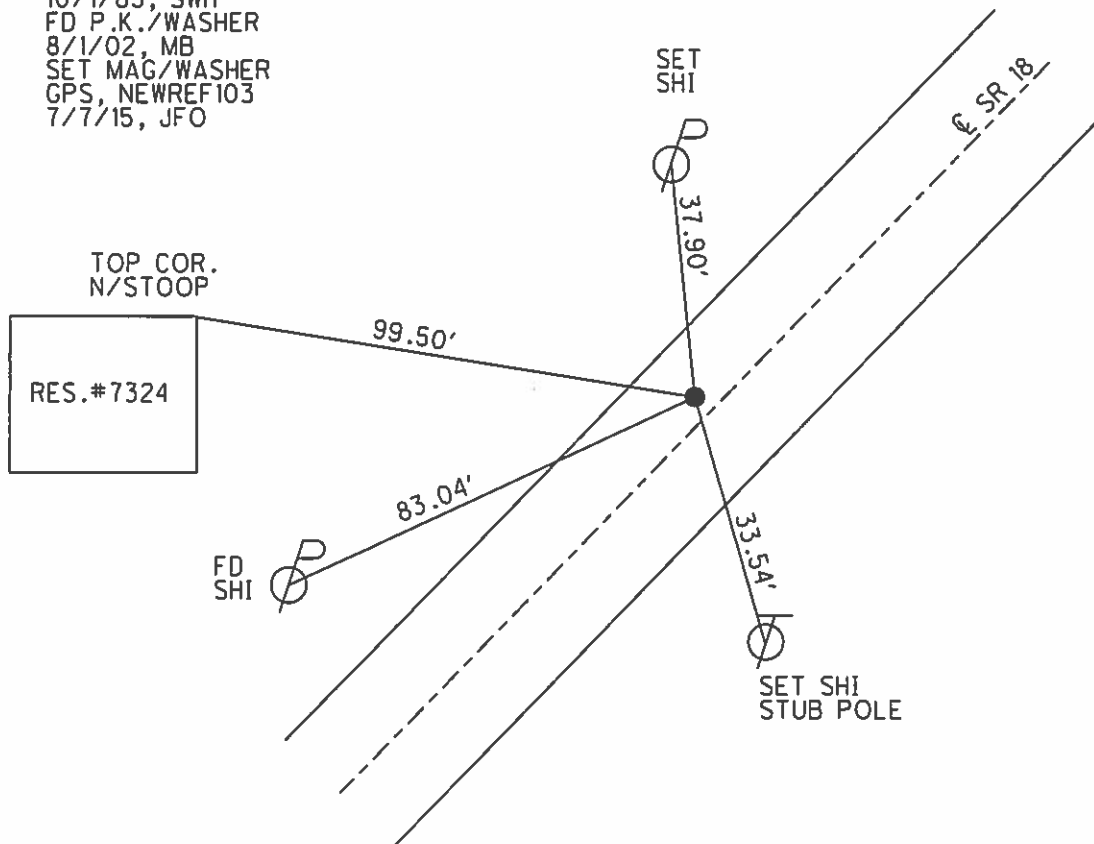
8.8' TO LT EDGE PAVEMENT

S.L.M. 1707+73.31

Grid: Northing: 570204.786 Easting: 1856953.637



RECORD:
 STA. 1710+03
 FD P.K./WASHER
 7/11/85, MB
 SET P.K./WASHER
 10/1/85, SWH
 FD P.K./WASHER
 8/1/02, MB
 SET MAG/WASHER
 GPS, NEWREF103
 7/7/15, JFO



O.D.O.T. DISTRICT 2 SURVEY OFFICE

PERSONNEL

REFERENCE NO. 103

SHEET OF

NOTES Hoffman

H.C. LOENKKE

R.C. BARNHISEL

DATE 7-11-85

WEATHER CLEAR

TEMP. 75°

ROUTE SR 18

COUNTY SENECA

TOWNSHIP THOMPSON

SECTION 9

T3 N R 17 E

TYPE MONUMENT P.K./WASHER Set P.K./WASHER

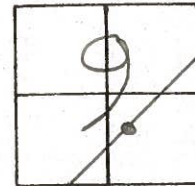
ON SURFACE - BELOW yes

LEFT- & PAV'T. - RIGHT 2.3

7.4 TO LT. EDGE PAVEMENT

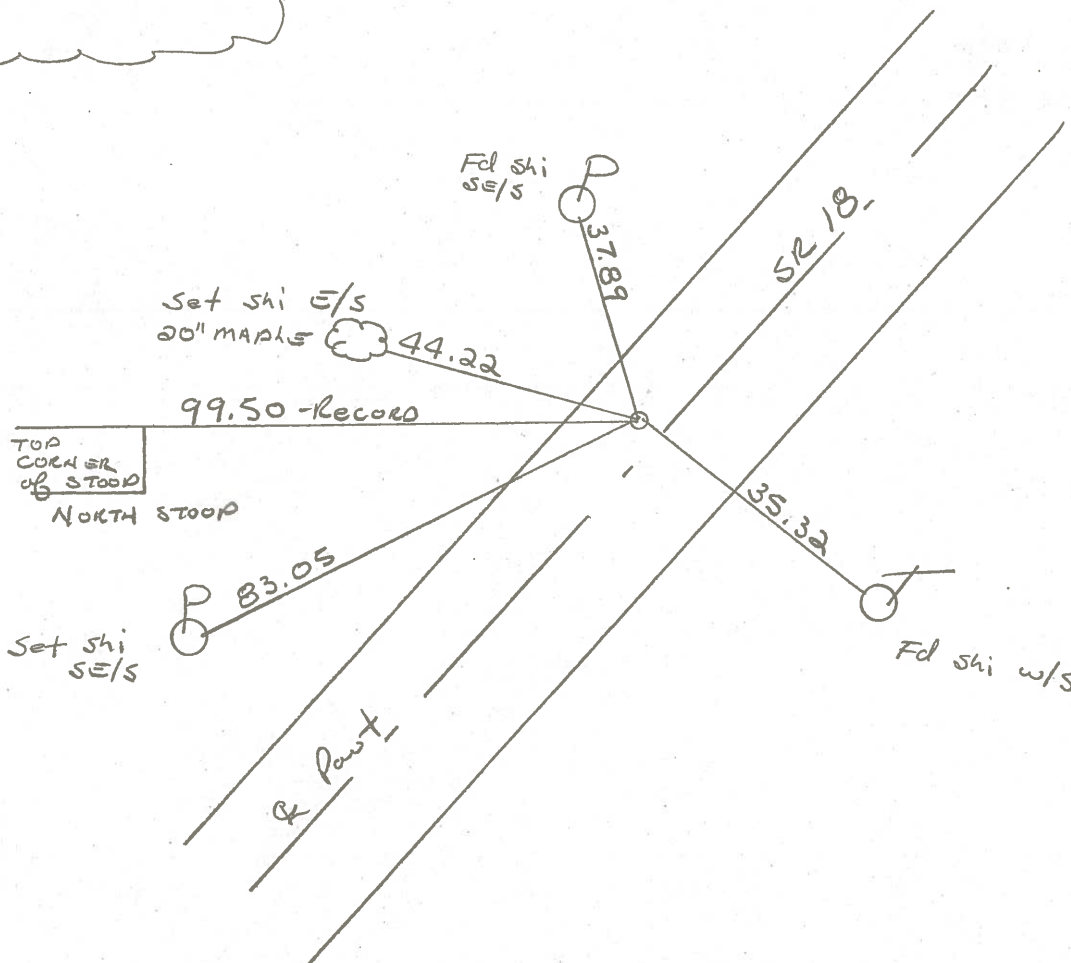
S.L.M. 1710 + 03

*Set P.K./WASHER
10-1-85 SWN*



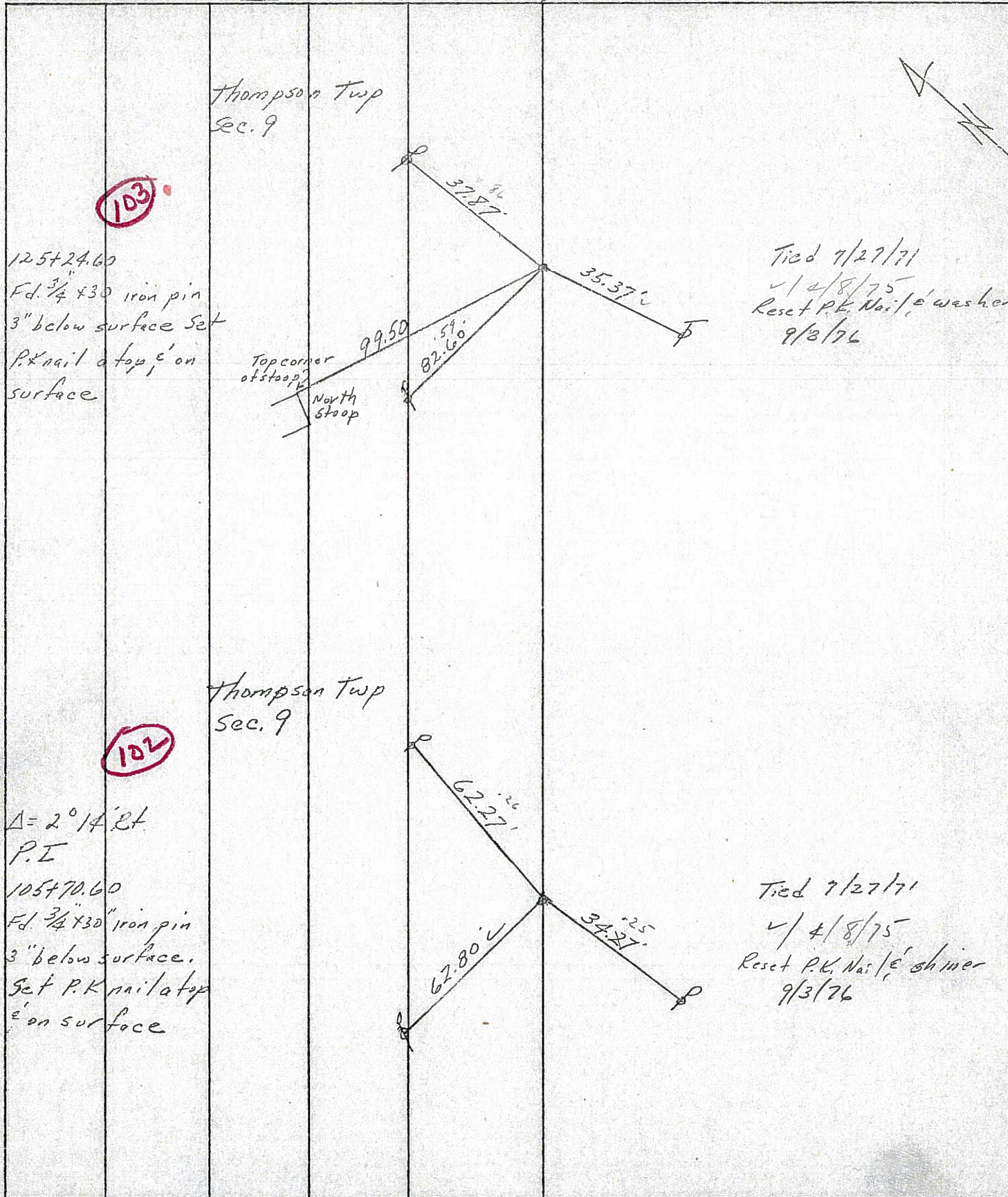
RECORD:

125 + 24.60



PERSONNEL	TITLE	PERSONNEL	TITLE	COUNTY	DATE
Ash				Seneca	11/22/72
Cronin				S. R. #18 (S.H. #267)	WEATHER cloudy
Propte				SEC. 9 R-1 & R-2	TEMP. 34°
Anderson					

DESCRIPTION Ties for Control Points - Republic to Sandusky Co Line JOB NO. _____



PERSONNEL	TITLE	PERSONNEL	TITLE	COUNTY	DATE	WEATHER	TEMP.
Ash				Seneca	11/22/72	cloudy	34°
Cronin				S. R. #18 (S.H. #267)			
Ripple				SEC. 9 R-1 & R-2			
Anderson							

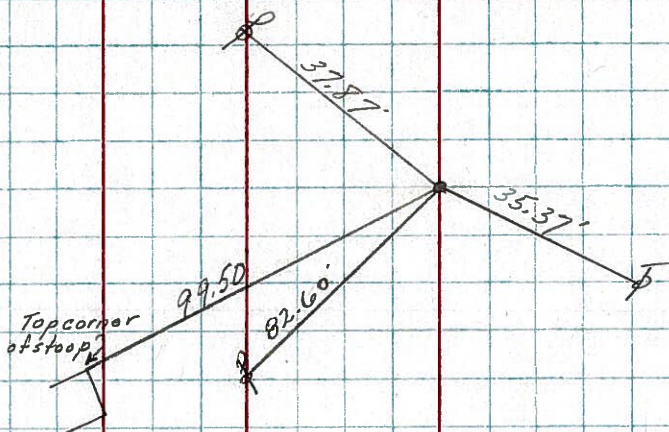
DESCRIPTION *Ties for Control Points - Republic to Sandusky Co. Line* JOB NO.

LEFT CENTER LINE RIGHT

103

125+24.60
 Fd. 3/4" x 30" iron pin
 3" below surface. Set
 P.K. nail at top, 1' on
 surface.

Thompson Twp
 Sec. 9

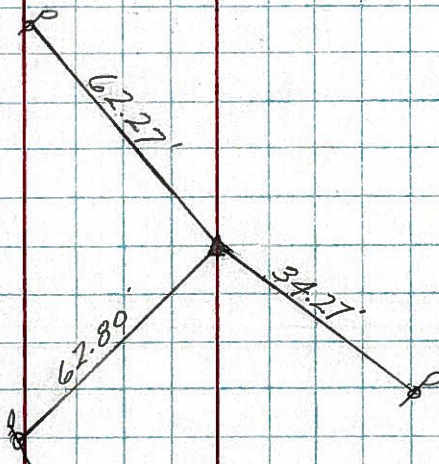


Tied 7/27/71

102

$\Delta = 2^\circ 14' \text{ RT}$
 P.I.
 105+70.60
 Fd. 3/4" x 30" iron pin
 3" below surface.
 Set P.K. nail at top
 1' on surface.

Thompson Twp
 Sec. 9

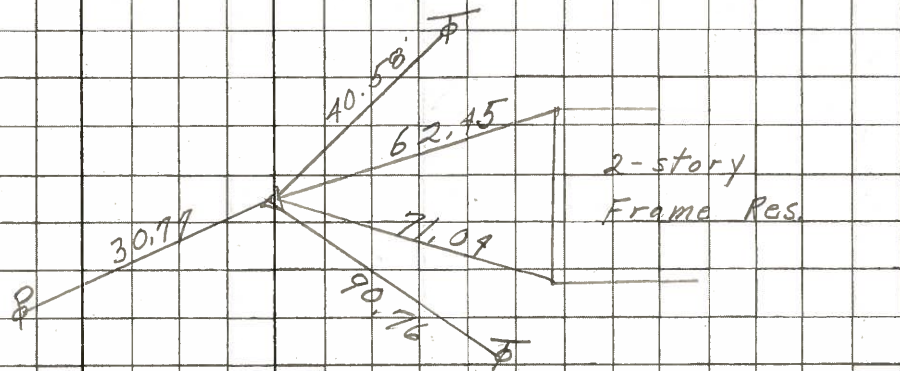


Tied 7/27/71

PERSONNEL	TITLE	PERSONNEL	TITLE	COUNTY	DATE
Schneider		Potts		Sene	11-14-68
Mosser				S. R.	18
Barbour				SEC	Republicans
Reddina				TEMP.	32°
DESCRIPTION	Ties for Control Points				JOB NO.

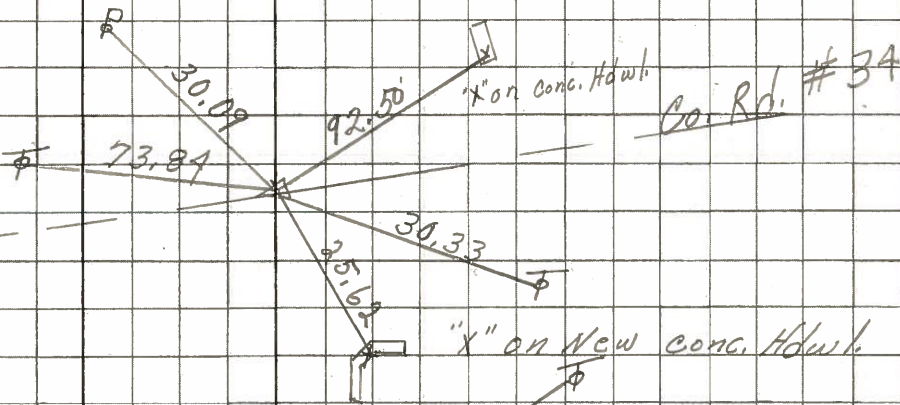
106

1762+57
P.K. Nail
 $\Delta = 0^{\circ}53' \text{ Rt.}$
8194



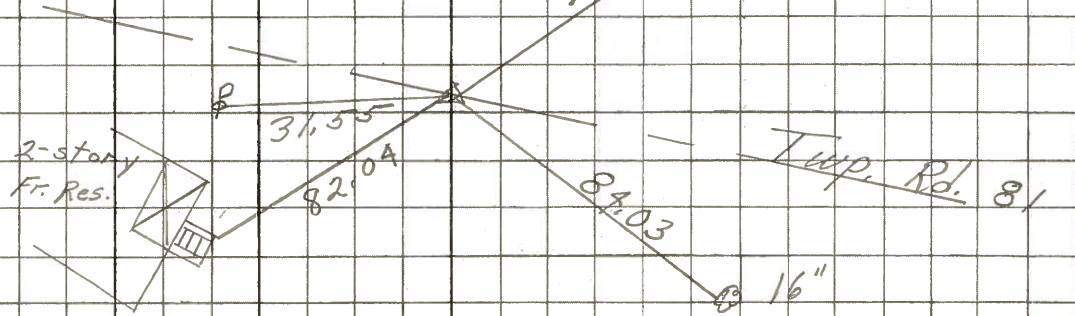
105

1760+42
P.K. Nail
8193



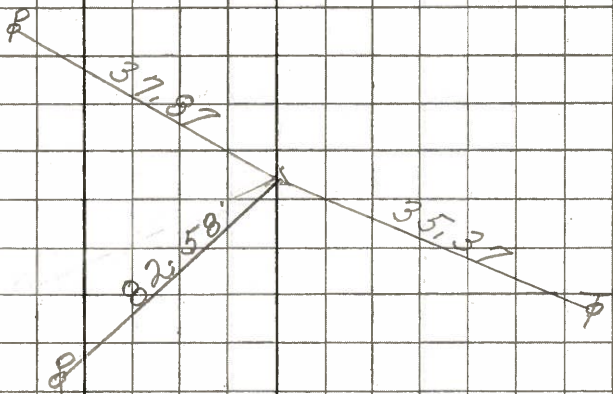
104

1737+46
 $\Delta = 0^{\circ}06' \text{ Rt.}$
P.K. Nail
8192



103

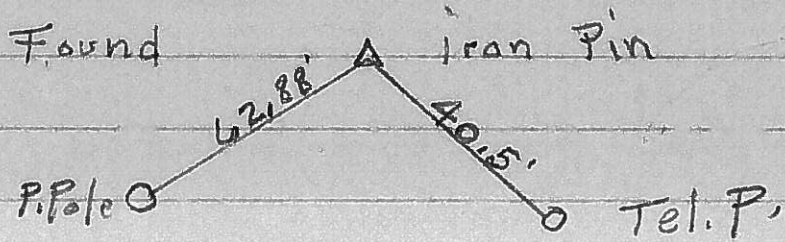
P.O.T.
1709+35.2
P.K. Nail
8191



102

76+62.9

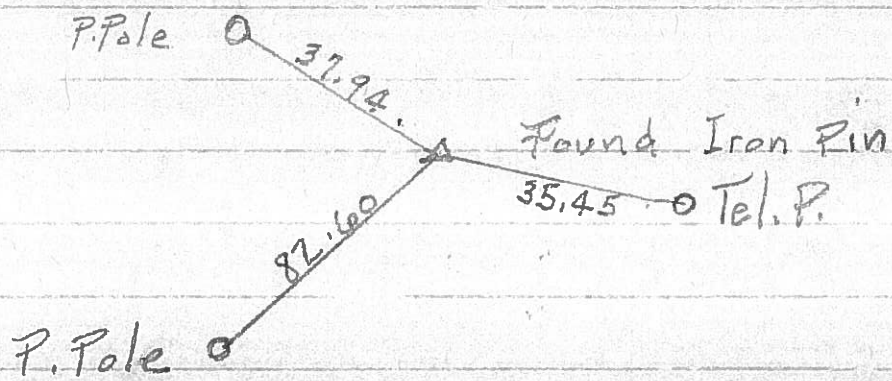
P.I.



103

96+16.9

P.I.



104

124 + 27.5'

P.I.

