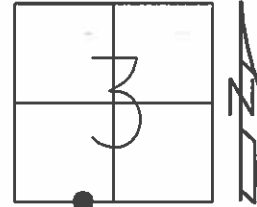


O.D.O.T. DISTRICT 2 SURVEY OFFICE (USE ONLY)

PERSONNEL \_\_\_\_\_ REFERENCE NO. 105 A SHEET 13 OF 18  
 NOTES RHOADES DATE 4/16/15 ROUTE SR 18  
 H.C. O'CONNER WEATHER OVERCAST/WINDY COUNTY SENECA  
 R.C. RHOADES TEMP. 60° TOWNSHIP THOMPSON  
 \_\_\_\_\_ SECTION 3  
 \_\_\_\_\_ T 3 N R 17 E

TYPE MONUMENT MAG NAIL  
 ON SURFACE - ~~BELOW~~ ON \_\_\_\_\_  
~~LEFT~~ - ℄ PAV'T - RIGHT 0.5'  
 \_\_\_\_\_ TO \_\_\_\_\_ EDGE PAVEMENT  
 S.L.M. 1758+80.06



Grid: Northing: 573807.517 Easting: 1860572.897

SET MAG/WASHER  
 GPS, NEWREF A105  
 7/7/15, JFO

