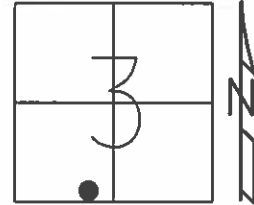


O.D.O.T. DISTRICT 2 SURVEY OFFICE (USE ONLY)

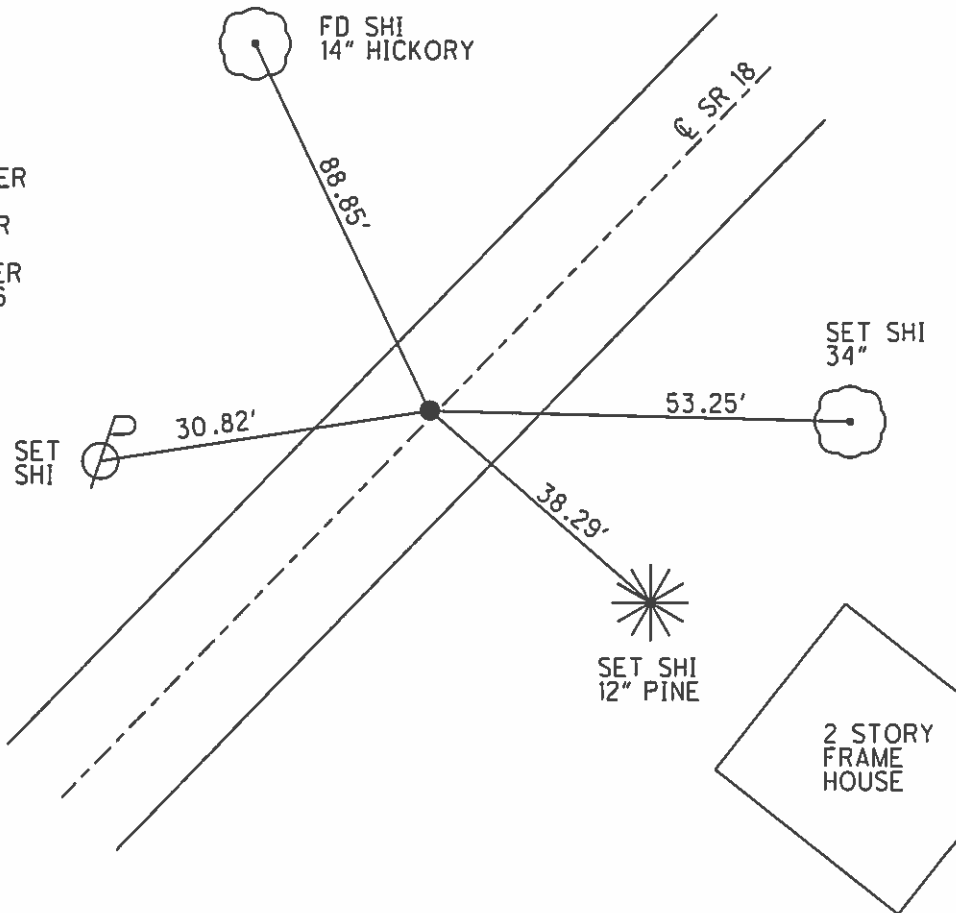
PERSONNEL _____ REFERENCE NO. 106 SHEET 14 OF 18
 NOTES RHOADES DATE 4/16/15 ROUTE SR 18
 H.C. O'DONNELL WEATHER OVERCAST/WINDY COUNTY SENECA
 R.C. RHOADES TEMP. 60° TOWNSHIP THOMPSON
 _____ SECTION 3
 _____ T 3 N R 17 E

TYPE MONUMENT R.R.SPIKE
 ON SURFACE - BELOW 0.3'
 LEFT - ☉ PAV'T - RIGHT ON
8.7' TO LT EDGE PAVEMENT
 S.L.M. 1760+94.10



Grid: Northing: 573958.473 Easting: 1860724.699

RECORD: P.I.
 $\Delta = 0^{\circ}53' RT$
 STA. 25+00.45
 FD 3/4" IPIN
 SET R.R.SPIKE
 ON SURFACE.
 FD R.R.SPIKE
 7/11/85, MB
 SET P.K./WASHER
 10/1/85, SWH
 FD P.K./WASHER
 8/1/02, MB
 SET MAG/WASHER
 GPS, NEWREF106
 7/7/15, JFO



O.D.O.T. DISTRICT 2 SURVEY OFFICE

PERSONNEL

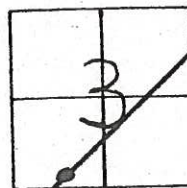
NOTES BARNHISEL
 H.C. LOEHRKE
 R.C. HOFFMAN

REFERENCE NO. 106
 DATE 7-11-85
 WEATHER CLEAR
 TEMP. 65°

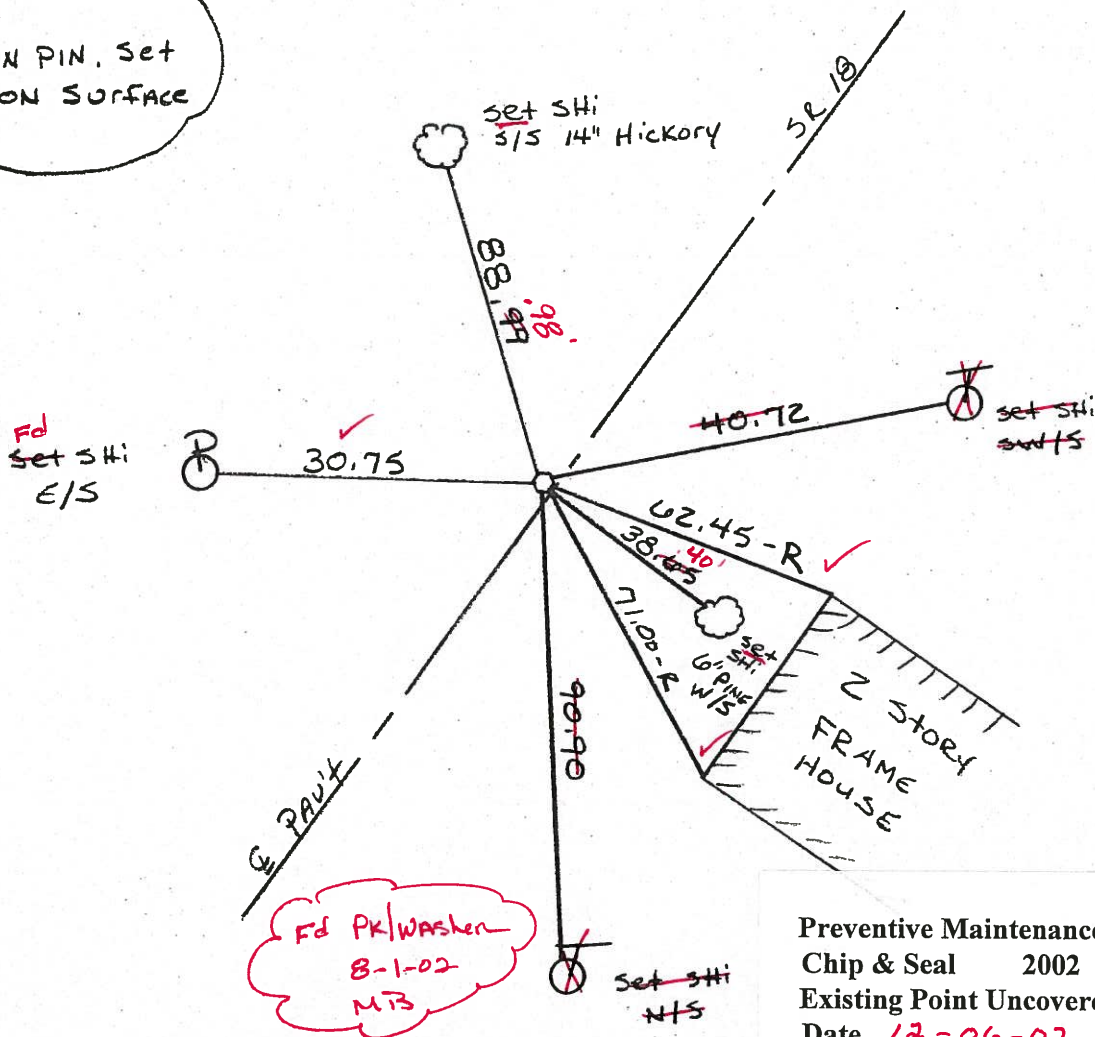
SHEET OF
 ROUTE 18
 COUNTY Seneca
 TOWNSHIP T. Thompson
 SECTION 3
 T3 N R 17 E

TYPE MONUMENT RR SPIKE
 ON SURFACE - ~~BELOW~~ YES
 LEFT - ℄ PAV'T. - RIGHT 0.7
8.7 TO ℄ EDGE PAVEMENT
 S.L.M. 1743+26

*Set PK/WASHER
10-1-85 SWN*



RECORDED
 $\Delta = 00^\circ 53' R +$
 P.I.
 25+00.45
 FD 3/4" IRON PIN. Set
 RR SPIKE ON SURFACE



Preventive Maintenance
 Chip & Seal 2002
 Existing Point Uncovered
 Date 12-06-02

O.D.O.T. DISTRICT 2 SURVEY OFFICE

PERSONNEL

REFERENCE NO. 106

SHEET OF

NOTES BARNHISEL

H.C. LOEHRKE

R.C. HOFFMAN

DATE 7-11-85

WEATHER CLEAR

TEMP. 65°

ROUTE 18

COUNTY Seneca

TOWNSHIP THOMPSON

SECTION 3

T3 N R 17 E

TYPE MONUMENT RR SPIKE

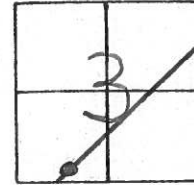
*Set PK/WASHER
10-1-85 SWX*

ON SURFACE - ~~BELOW~~ YES

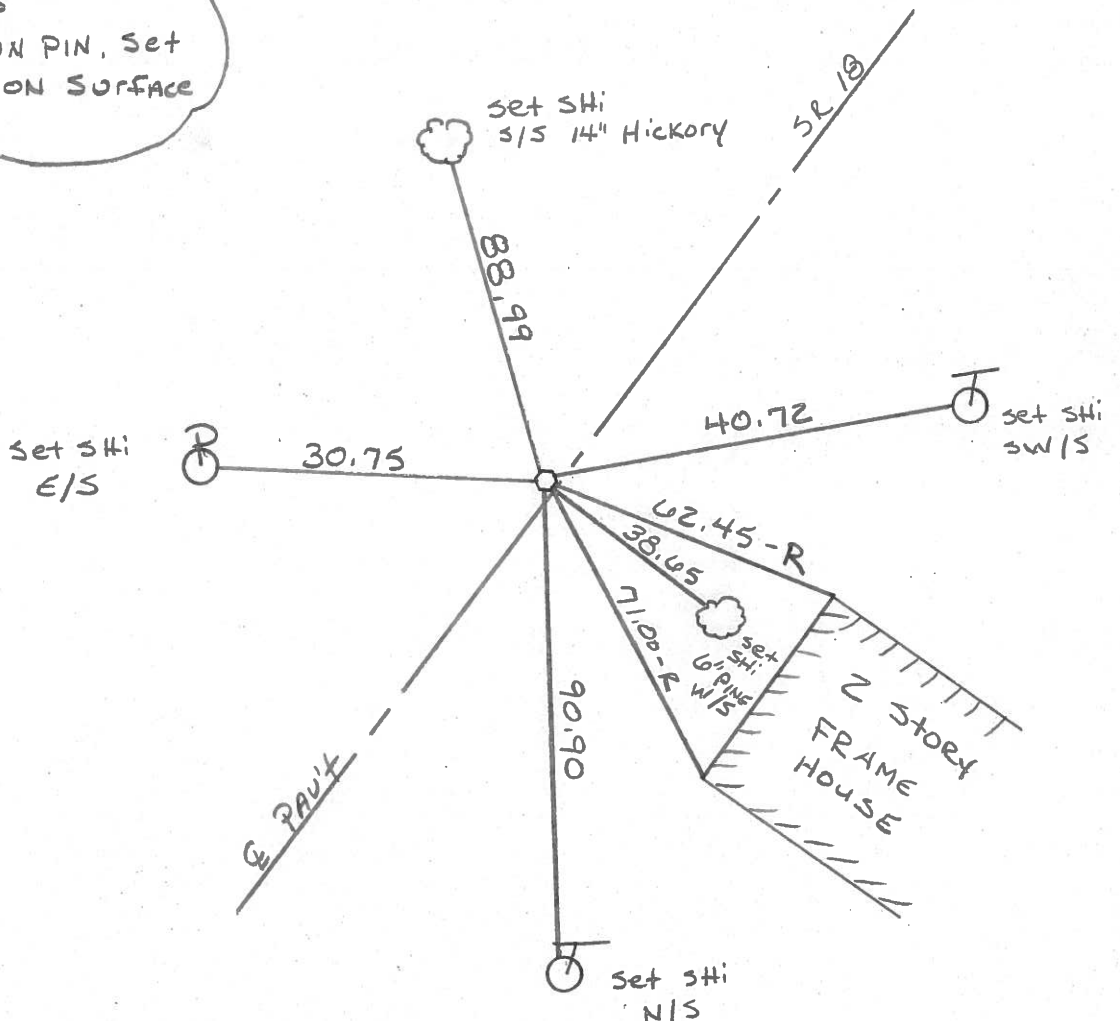
LEFT - ~~Q~~ PAV'T. - ~~RIGHT~~ 0.7

0.7 TO LT EDGE PAVEMENT

S.L.M. 1743+26



RECORDED
 $\Delta = 00^{\circ} 53' \text{ RT}$
 P.I.
 25+00.45
 FD 3/4" IRON PIN, SET
 RR SPIKE ON SURFACE



PERSONNEL	TITLE	PERSONNEL	TITLE	COUNTY	Seneca	DATE	11/22/72
Ash				S. R.	#18. (S.H. #267)	WEATHER	cloudy
Cronin				SEC.	R-3	TEMP.	35°
Ripple							
Anderson							

DESCRIPTION Ties for Control Points - Republic to Sandusky Co. Line JOB NO. _____

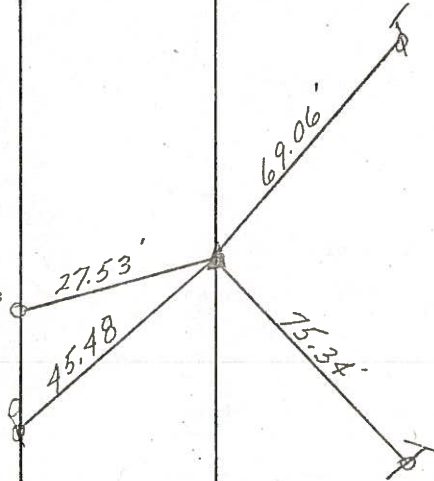
LEFT CENTER LINE RIGHT

107

$\Delta = 00^\circ 40' \text{ Rt.}$
 P.I.
 35+01.20
 Fd. R.R. spike. Set
 R.R. spike atop
 & on surface

Thompson Twp
 Sec. 3

4" pipe
 Gas line
 marker

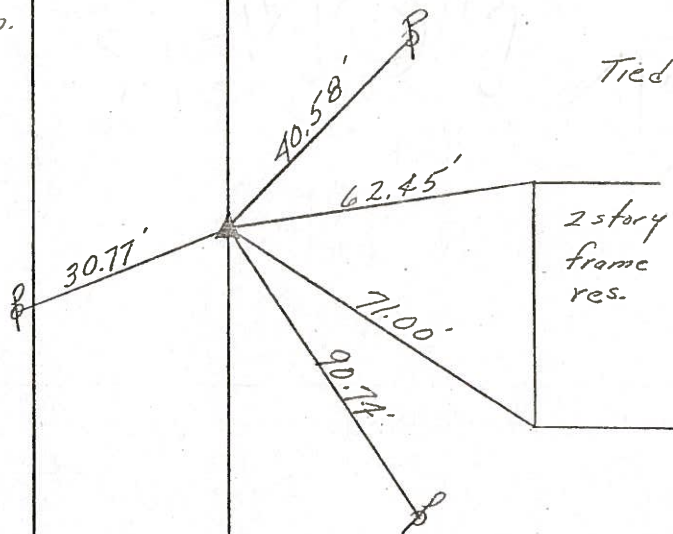


Tied 8/16/72

106

$\Delta = 00^\circ 53' \text{ Rt.}$
 P.I.
 25+00.45
 Fd. 3/4" iron pin. Set
 R.R. spike atop,
 on surface

Thompson Twp.
 Sec. 3

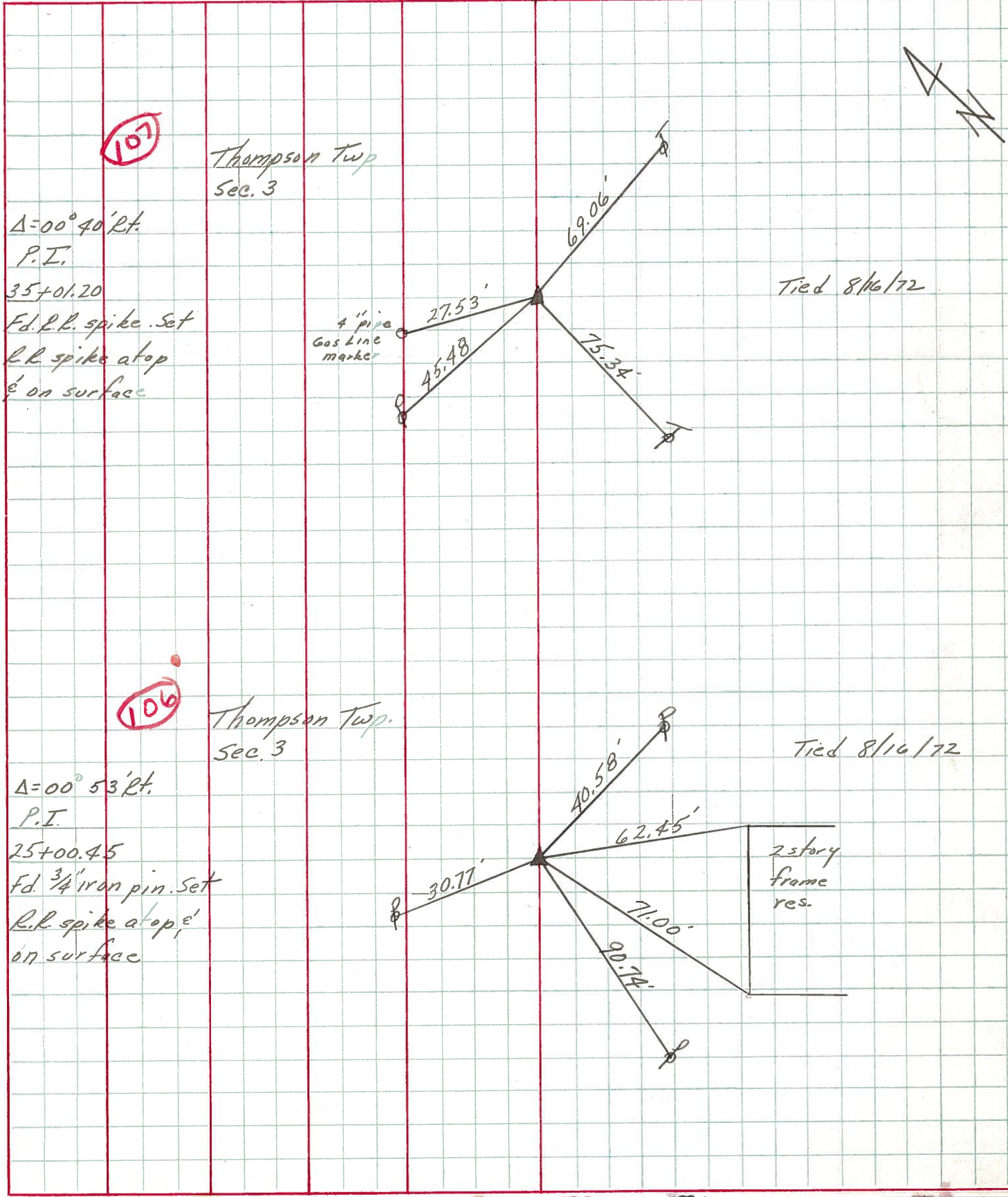


Tied 8/16/72

PERSONNEL	TITLE	PERSONNEL	TITLE
Ash			
Cronin			
Ripple			
Anderson			

COUNTY Seneca DATE 11/22/72
 S. R. #18 (S.H. #267) WEATHER cloudy
 SEC. R-3 TEMP. 35°

DESCRIPTION Ties for Control Points - Republic to Sandusky Co. Line JOB NO. _____



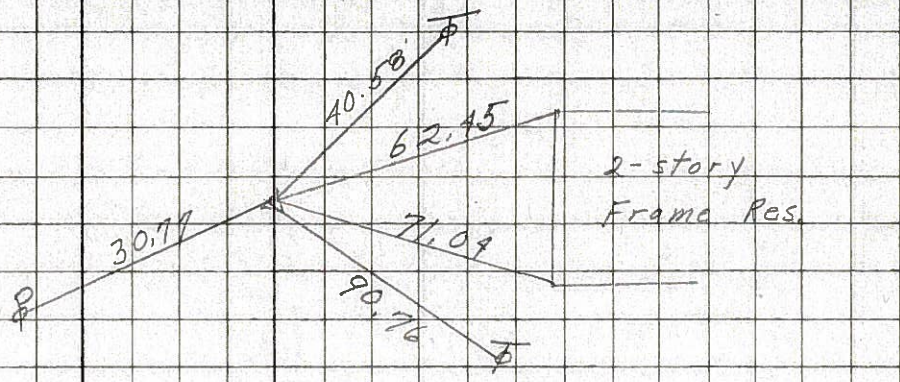
PERSONNEL	TITLE	PERSONNEL	TITLE
Schneider		Potts	
Mosser			
Barbour			
Redding			

COUNTY Seneca DATE 11-14-68
 S. R. 18 WEATHER Cloudy
 SEC Republic to Sen. Co. Line TEMP. 32°

DESCRIPTION Ties for Control Points JOB NO.

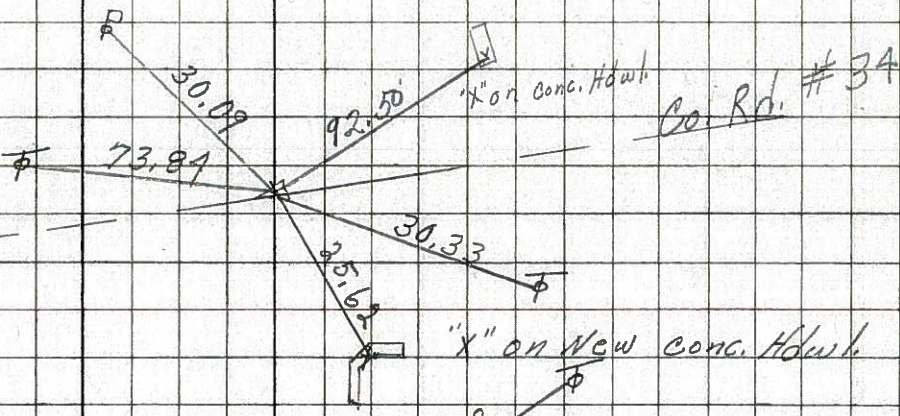
106

1762+57
 P.K. Nail
 $\Delta = 0^{\circ}53' \text{ Rt.}$
 8194



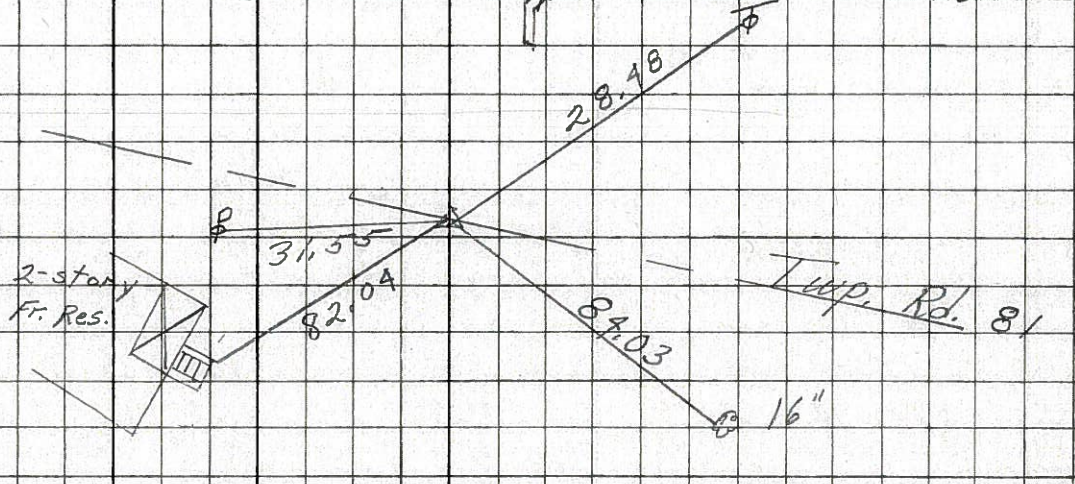
105

1760+42
 P.K. Nail
 8193



104

1737+46
 $\Delta = 0^{\circ}06' \text{ Rt.}$
 P.K. Nail
 8192



103

P.O.T.
 1709+35.2
 P.K. Nail
 8191

