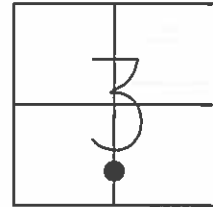


O.D.O.T. DISTRICT 2 SURVEY OFFICE (USE ONLY)

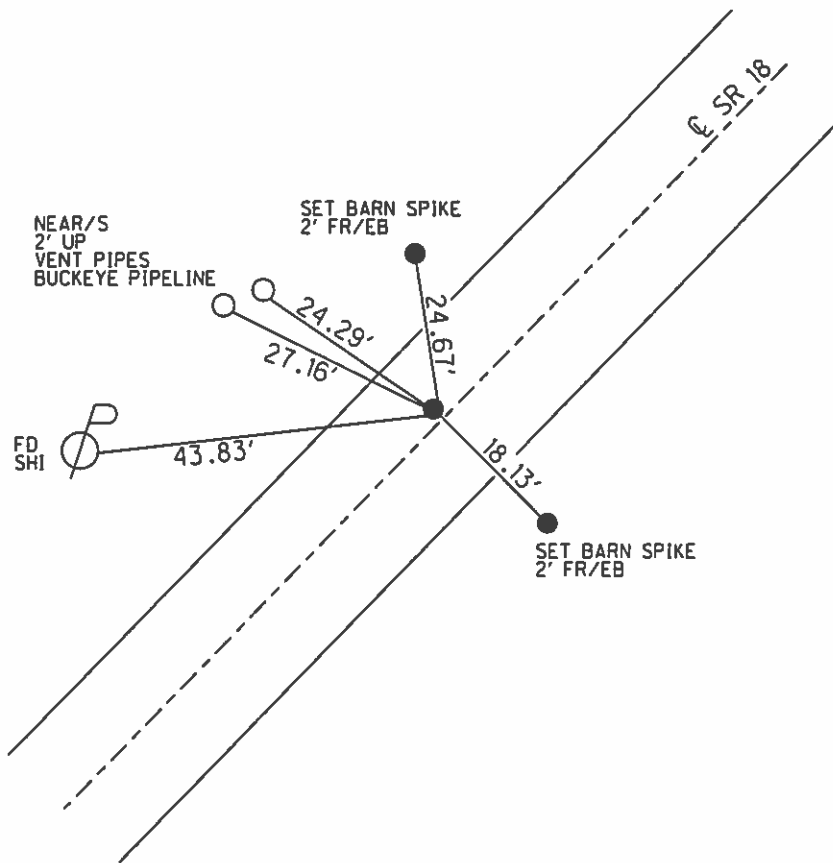
PERSONNEL _____ REFERENCE NO. 107 SHEET 15 OF 18
 NOTES RHOADES DATE 4/16/15 ROUTE SR 18
 H.C. O'DONNELL WEATHER OVERCAST/WINDY COUNTY SENECA
 R.C. RHOADES TEMP. 60° TOWNSHIP THOMPSON
 _____ SECTION 3
 _____ T 3 N R 17 E

TYPE MONUMENT P.K.NAIL
 ON SURFACE - ~~BELOW~~ ON _____
 LEFT - ☐ PAV'T - ~~RIGHT~~ 2.4'
8.8' TO LT EDGE PAVEMENT
 S.L.M. 1770+94.70



Grid: Northing: 574652.313 Easting: 1861445.679

RECORD: P.I.
 $\Delta = 0^{\circ}40' RT$
 STA. 35+01.20
 FD R.R. SPIKE
 SET R.R. SPIKE
 ON SURFACE
 FD R.R. SPIKE
 7/11/85, MB
 SET P.K./WASHER
 10/1/85, SWH
 FD P.K./WASHER
 8/1/02, MB
 SET MAG/WASHER
 GPS, NEWREF107
 7/7/15, JFO



O.D.O.T. DISTRICT 2 SURVEY OFFICE

PERSONNEL

REFERENCE NO. 107

SHEET OF

NOTES BARNHISEL

H.C. LOEHRKE

R.C. HOFFMAN

DATE 7-11-85

WEATHER CLEAR

TEMP. 65°

ROUTE 18

COUNTY SENEGA

TOWNSHIP Thompson

SECTION 3

T3 N R 17 E

TYPE MONUMENT RR SPIKE

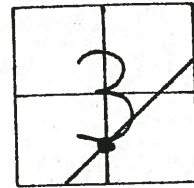
*Set PK/WASHER
10-1-85 SWH*

ON SURFACE - ~~BELOW~~ yes

LEFT - 0 PAV'T. - RIGHT 1.7

7.0 TO L+ EDGE PAVEMENT

S.L.M. 1773+29



RECORDED
 $\Delta = 00^{\circ}40' \text{ RT}$
 P.I.
 $35+01.20$
 FD RR SPK,
 and set RR
 SPK @ SURFACE

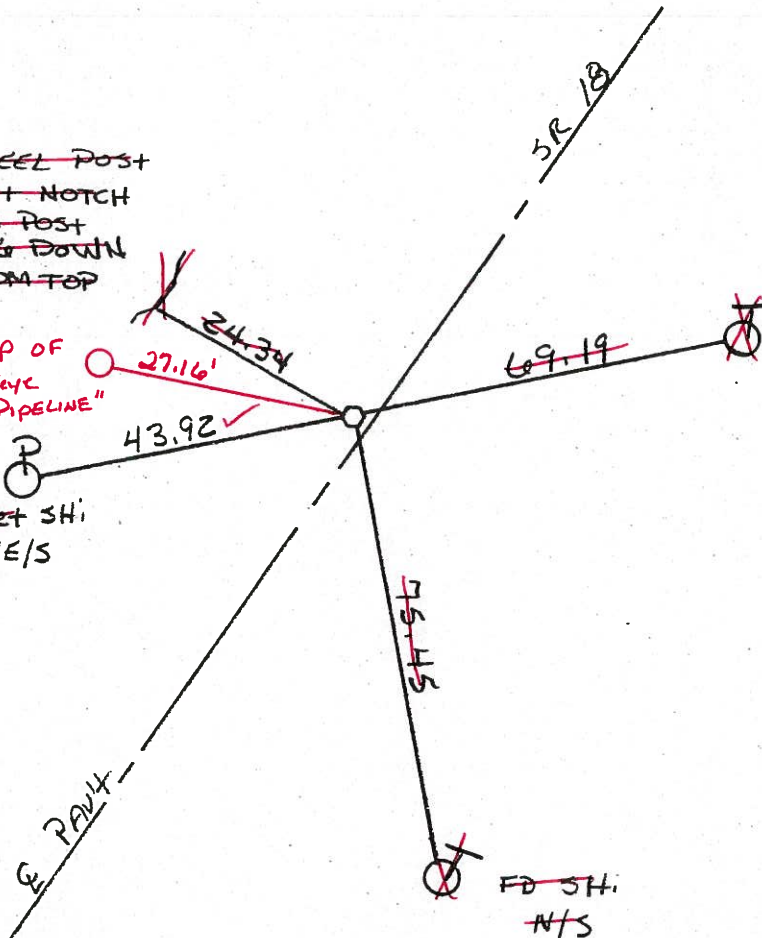
~~STEEL POST
CUT NOTCH
ON POST
2.6 DOWN
FROM TOP~~

NEAR SIDE 2' UP OF
VENT PIPE "BUCKEYE
PIPELINE"

FD SET SHI
NE/S

Set SHI
SW/S

FD SHI
N/S



FD PK/WASHER
 8-1-02
 MFB

Preventive Maintenance
 Chip & Seal 2002
 Existing Point Uncovered
 Date 12-06-02

O.D.O.T. DISTRICT 2 SURVEY OFFICE

PERSONNEL

REFERENCE NO. 107

SHEET OF

NOTES BARNHISEL

H.C. LOEHRKE

R.C. HOFFMAN

DATE 7-11-85

WEATHER CLEAR

TEMP. 65°

ROUTE 18

COUNTY SENECA

TOWNSHIP THOMPSON

SECTION 3

T3 NR 17 E

TYPE MONUMENT RR SPIKE

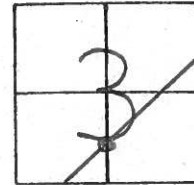
ON SURFACE - BELOW yes

LEFT - ☉ PAV'T. - RIGHT 1.7

7.0 TO L+ EDGE PAVEMENT

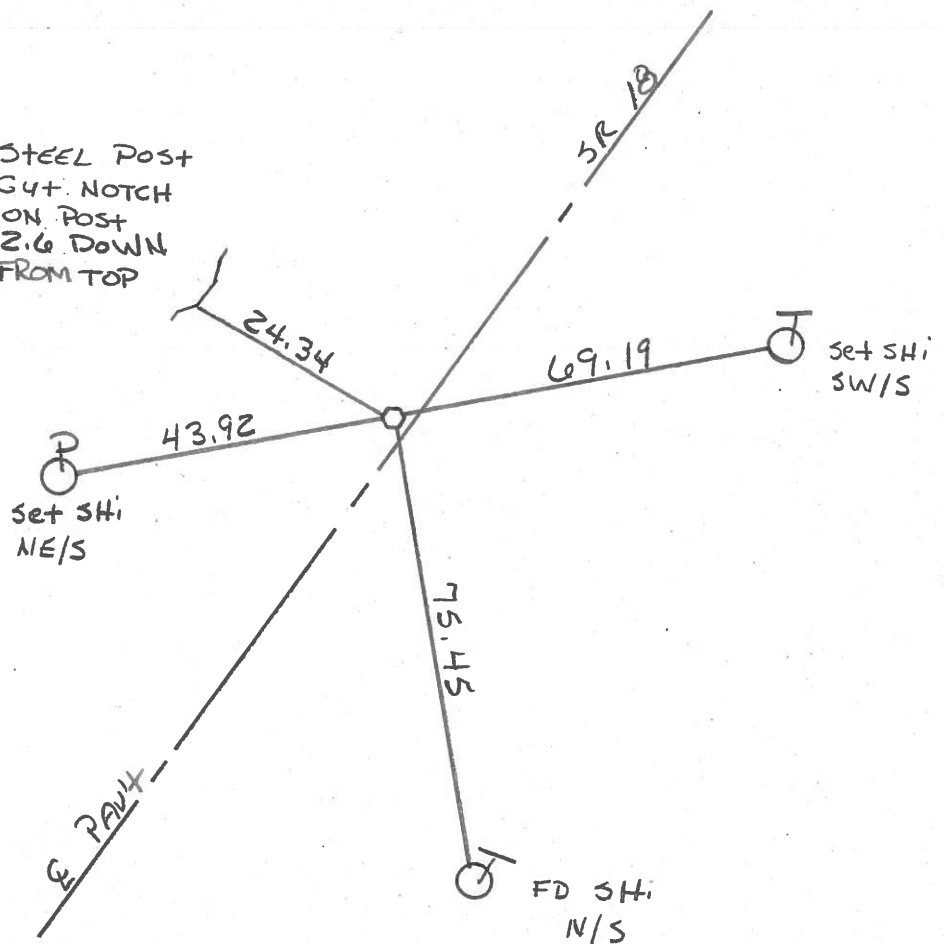
S.L.M. 1773+29

Set PK./WASHER
10-1-85 SWH



RECORDED
 $\Delta = 00^{\circ}40' R+$
 P.I.
 35+01.20
 FD RR SPK,
 and set RR
 SPK @ SURFACE

STEEL POST
 64+ NOTCH
 ON POST
 2.6 DOWN
 FROM TOP



PERSONNEL TITLE PERSONNEL TITLE

COUNTY Seneca

DATE 11/22/72

Ash

Cronin

R. P. P. P.

Anderson

S. R. #18. (S.H. #267)

WEATHER cloudy

SEC. R-3

TEMP. 35°

DESCRIPTION Ties for Control Points - Republic to Sandusky Co. Line JOB NO.

LEFT

CENTER LINE

RIGHT

107

$\Delta = 00^\circ 40' \text{ Rt.}$

P.I.

35+01.20

Fd R.R. spike. Set

R.R. spike atop

on surface

Thompson Twp
Sec. 3

4" pipe
Gas Line
marker

27.53'

45.48'

69.06'

75.34'

Tied 8/16/72

106

$\Delta = 00^\circ 53' \text{ Rt.}$

P.I.

25+00.45

Fd 3/4" iron pin. Set

R.R. spike atop,

on surface

Thompson Twp
Sec. 3

30.77'

40.58'

62.45'

71.00'

90.74'

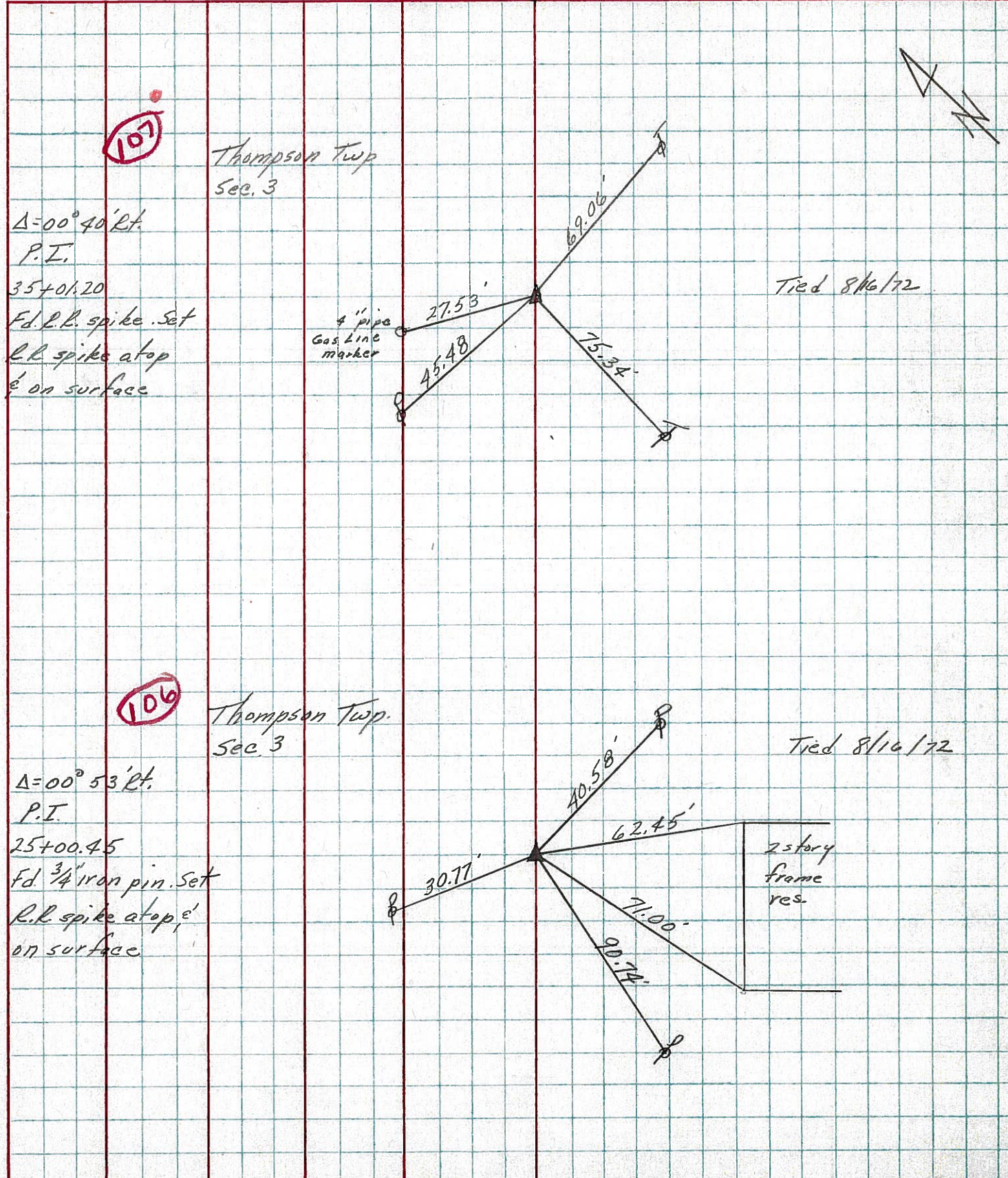
2 story
frame
res.

Tied 8/16/72



PERSONNEL	TITLE	PERSONNEL	TITLE	COUNTY	DATE
Ash				Seneca	11/22/72
Cronin				S. R. #18 (S.H. #267)	WEATHER cloudy
Ripple				SEC. R-3	TEMP. 35°
Anderson					

DESCRIPTION Ties for Control Points - Republic to Sandusky Co. Line JOB NO. _____



PERSONNEL TITLE PERSONNEL TITLE COUNTY Seneca DATE 11-19-68
 Schneider _____ Potts _____
 Mosser _____ S. R. 18 WEATHER Cloudy
 Barbour _____ SEC. Republic to San. Co. Line TEMP. 35°
 Redding _____
 DESCRIPTION Ties for Control Points JOB NO. _____

109

SAN-18

Seneca-Sandusky Co Line

Sandusky Co.
Seneca Co.

See Sandusky Co. Ties

109-A

1812+ 81.8
P.K. Nail

8197

Rd. sign Post
1' up

30.48

97.37

28.31

Plumbed
26.57

7.65

43.40

Twp. Rd. #82
old conc. sign base
Ohio Road sign

24" Oak

108

1792+ 59.5
P.K. Nail

8196

30.20

29.21

29.84

53.03

18" Oak

R/W on.

107

1772+ 58.2
 $\Delta = 0^\circ 40'$ RT.
P.K. Nail

8195

4" Gas Vent
27.53

45.48

69.06

75.34