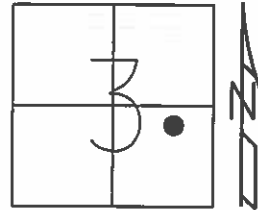


O.D.O.T. DISTRICT 2 SURVEY OFFICE (USE ONLY)

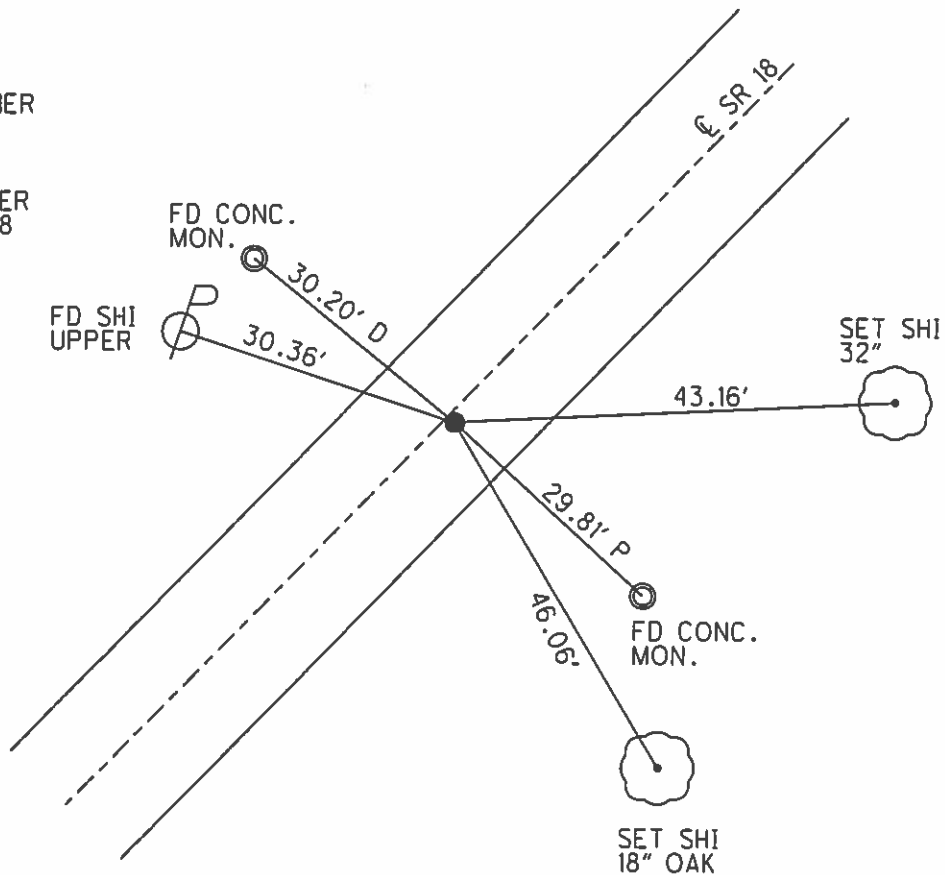
PERSONNEL _____ REFERENCE NO. 108 SHEET 16 OF 18
 NOTES RHOADES DATE 4/16/15 ROUTE SR 18
 H.C. O'DONNELL WEATHER OVERCAST/WINDY COUNTY SENECA
 R.C. RHOADES TEMP. 60° TOWNSHIP THOMPSON
 _____ SECTION 3
 _____ T 3 N R 17 E

TYPE MONUMENT P.K.NAIL
 ON SURFACE - ~~BELOW~~ ON _____
~~LEFT~~ - C PAV'T - RIGHT 0.7'
11.0' TO LT. EDGE PAVEMENT
 S.L.M. 1790+95.98



Grid: Northing: 576023.081 Easting: 1862903.839

RECORD: P.I.
 $\Delta = 0^{\circ}05' LT$
 STA. 55+02.15
 FD 3/4" IPIN
 SET R.R.SPIKE
 ON SURFACE.
 FD R.R.SPIKE
 7/11/85, MB
 SET P.K./WASHER
 10/1/85, SWH
 FD P.K./NAIL
 8/1/02, MB
 SET MAG/WASHER
 GPS, NEWREF108
 7/7/15, JFO



O.D.O.T. DISTRICT 2 SURVEY OFFICE

PERSONNEL

REFERENCE NO. 108

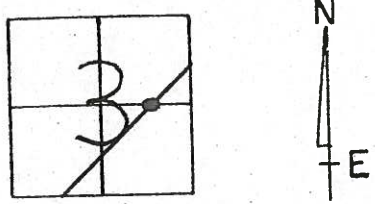
SHEET OF

NOTES BARNHISEL
 H.C. LOEHRKE
 R.C. HOFFMAN

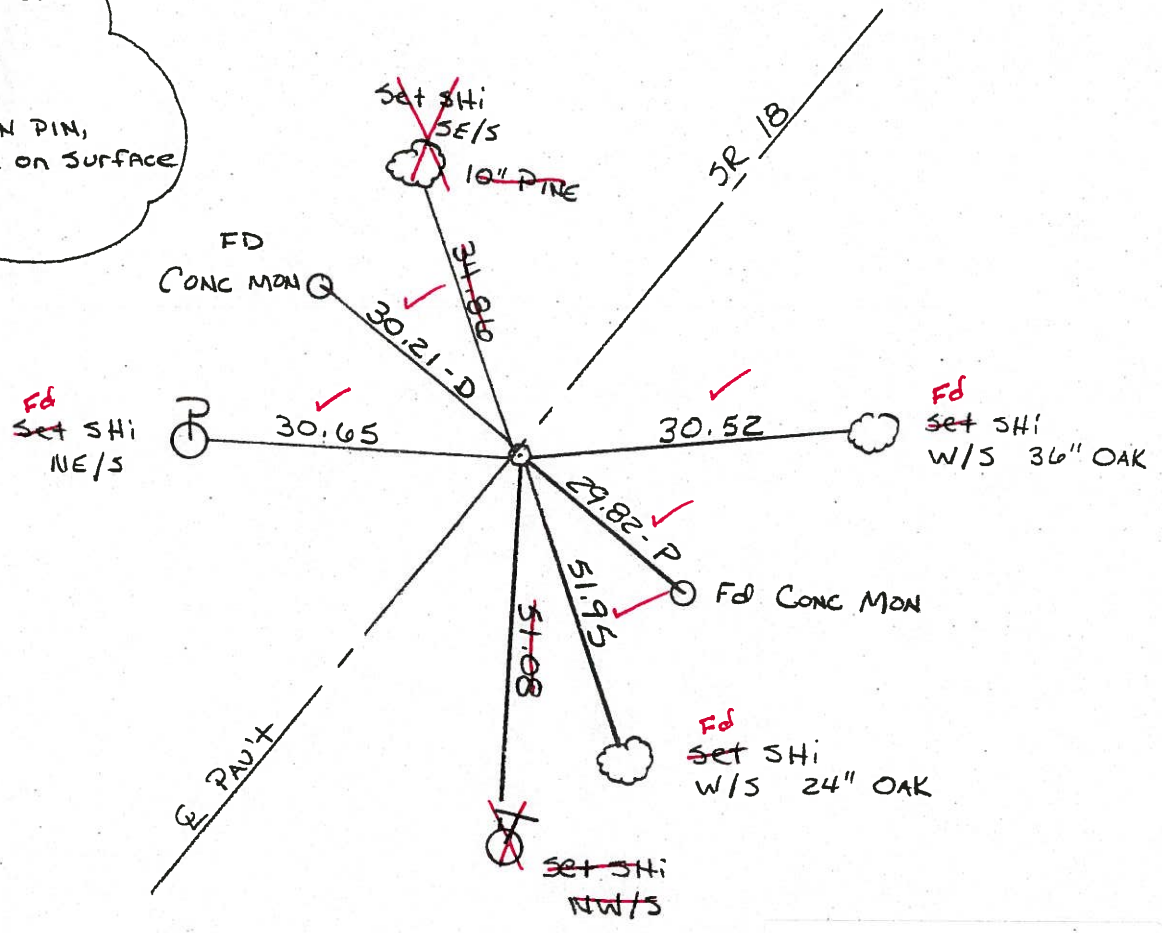
DATE 7-11-85
 WEATHER CLEAR
 TEMP. 65°

ROUTE 18
 COUNTY SENECA
 TOWNSHIP THOMPSON
 SECTION 3
 T3 N R 17 E

TYPE MONUMENT RR SPIKE Set P.K./WASHER
 ON SURFACE - BELOW yes 10-1-85 SWH
 LEFT - PAV'T. - RIGHT 0.7
8.5 TO Rt EDGE PAVEMENT
 S.L.M. 1793+31



RECORDED
 $\Delta = 00^{\circ} 05' Lt$
 PI
 55+02.15
 FD $\frac{3}{4}$ " IRON PIN,
 SET RR SPK ON SURFACE



Fd PK NAIL
 8-1-02
 MBS

Preventive Maintenance
 Chip & Seal 2002
 Existing Point Uncovered
 Date 12-06-02

O.D.O.T. DISTRICT 2 SURVEY OFFICE

PERSONNEL

REFERENCE NO. 108

SHEET OF

NOTES BARNHISEL

H.C. LOEHRKE

R.C. HOFFMAN

DATE 7-11-85

WEATHER CLEAR

TEMP. 65°

ROUTE 18

COUNTY SENECA

TOWNSHIP THOMPSON

SECTION 3

T3 N R 17 E

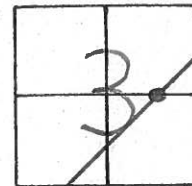
TYPE MONUMENT RR SPIKE Set PK/WASHER

ON SURFACE - ~~BELOW~~ YES 10-1-85 SWH

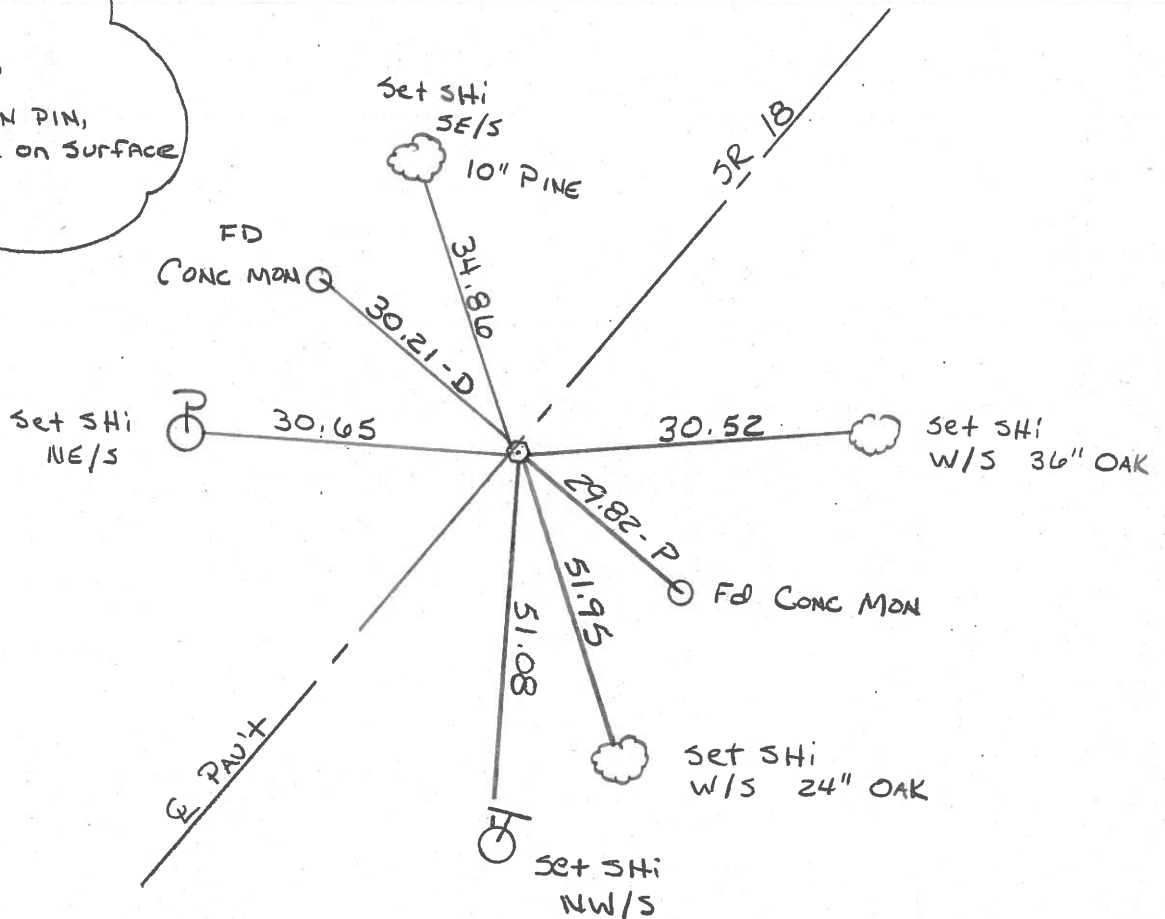
LEFT - Q PAV'T. - RIGHT 0.7

8.5 TO Rt EDGE PAVEMENT

S.L.M. 1793+31

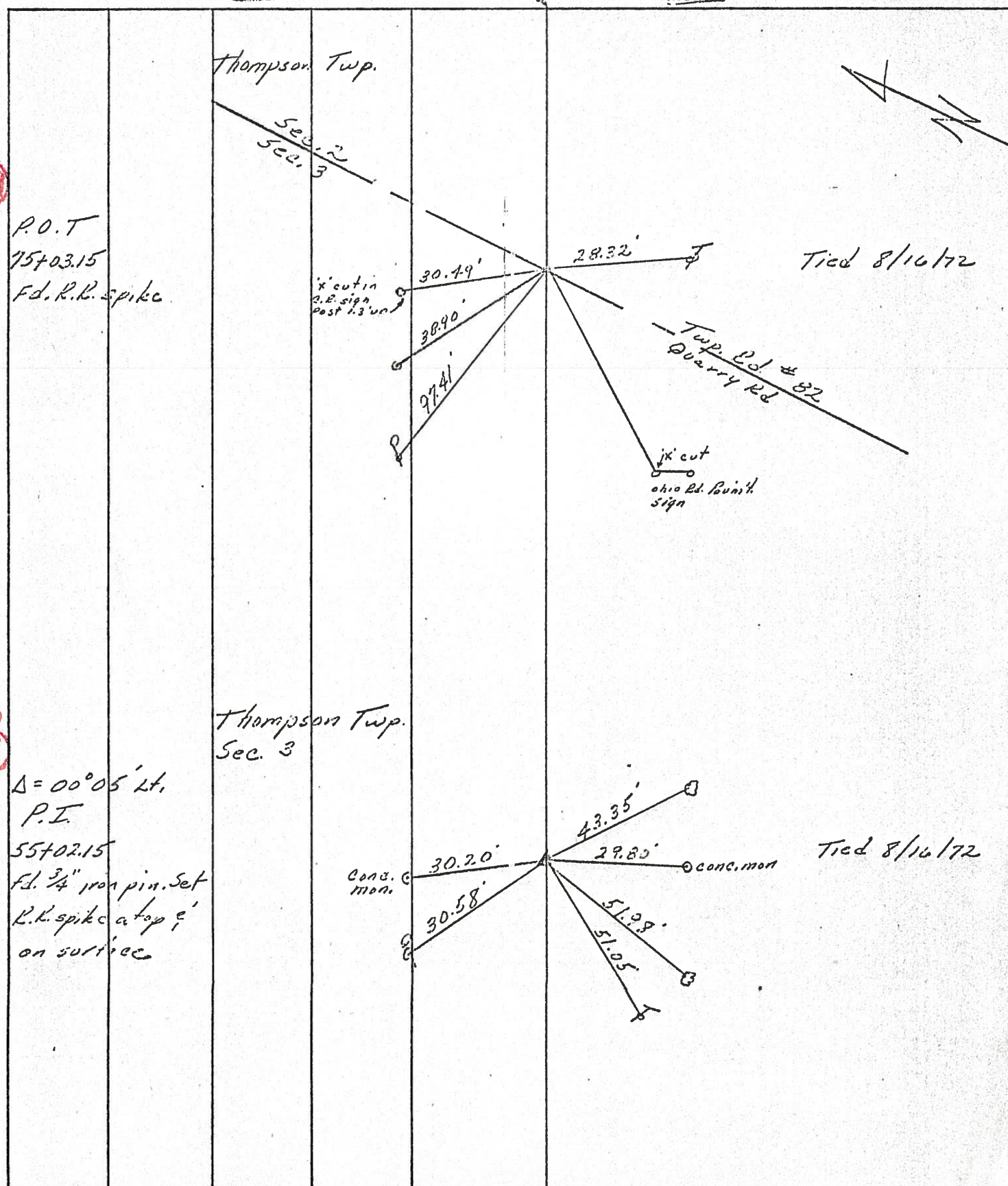


RECORDED
 $\Delta = 00^{\circ} 05' Lt$
 PI
 55+02.15
 FD $\frac{3}{4}$ " IRON PIN,
 Set RR SPK ON SURFACE



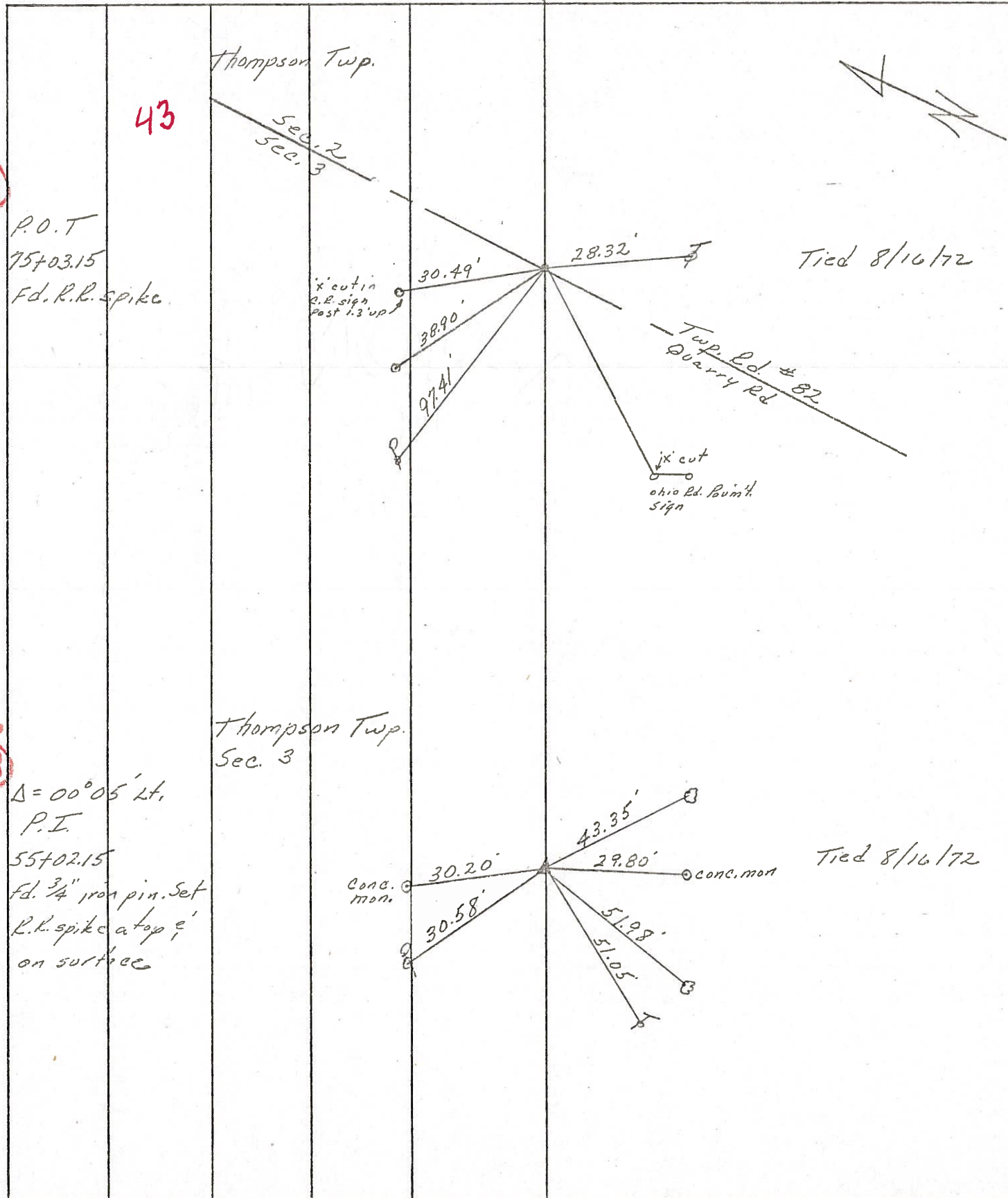
PERSONNEL	TITLE	PERSONNEL	TITLE	COUNTY	DATE	WEATHER	TEMP.
Ash				SANDUSKY	11/27/72	SUNNY	30°
Cromin				S. R. #18 (S.H. #267)			
Ripple				SEC. R-3			
Anderson							

DESCRIPTION Ties for Central Points - Reference to Sandusky Co. Line JOB NO. _____



PERSONNEL	TITLE	PERSONNEL	TITLE	COUNTY	DATE
Ash				Seneca	11/24/72
Cronin				S. R. #18 (S.H. #267)	WEATHER sunny
Ripple				SEC. R-3	TEMP. 30°
Anderson					

DESCRIPTION: Ties for Control Points - Republic to Sandusky Co. Line



PERSONNEL TITLE PERSONNEL TITLE

Ash
Cronin
Ripple
Anderson

COUNTY Seneca

DATE 11/24/72

S. R. #18 (S.H. #267)

WEATHER sunny

SEC. R-3

TEMP. 30°

DESCRIPTION

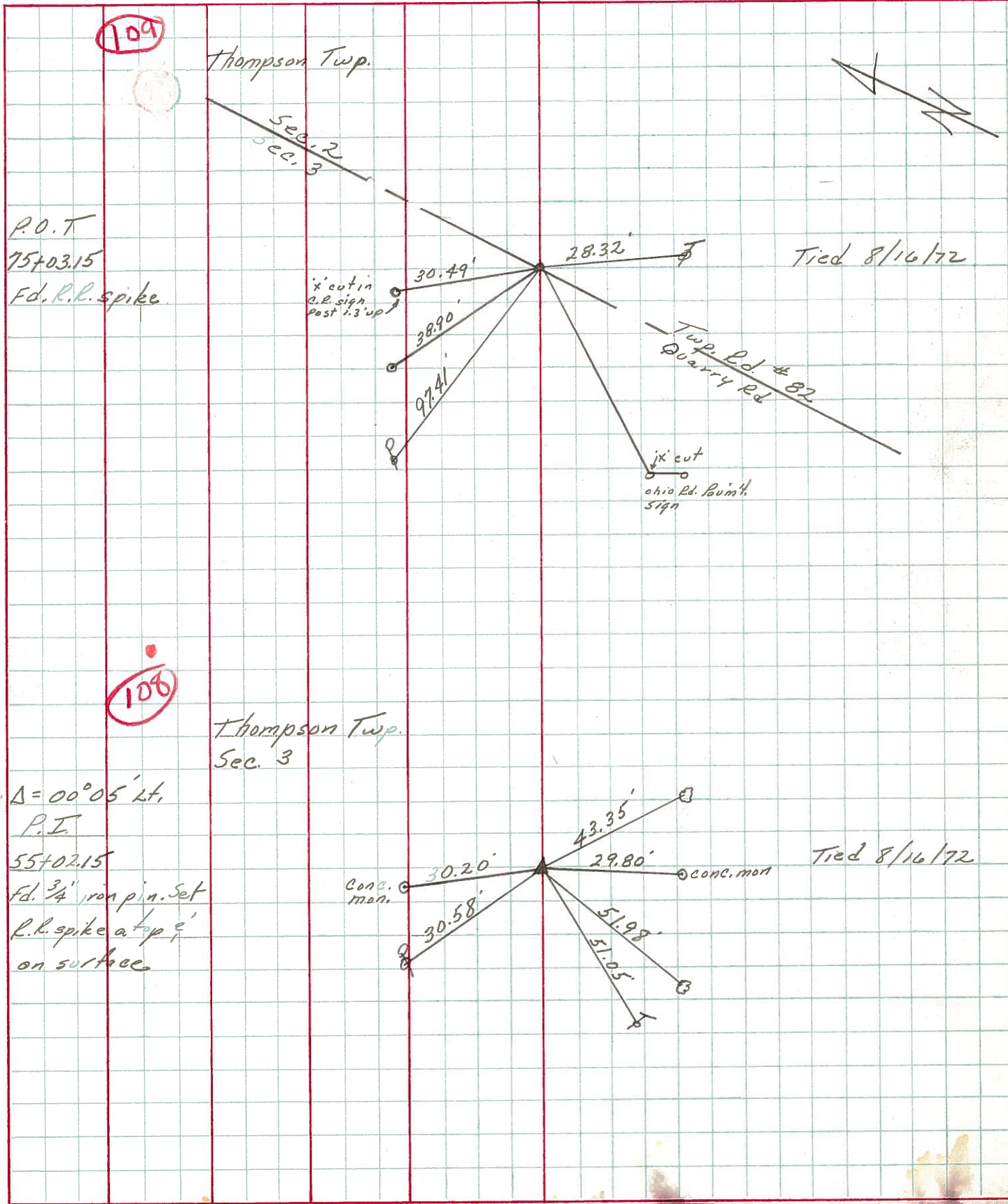
Ties for Control Points - Republic to Sandusky Co. Line

JOB NO.

LEFT

CENTER LINE

RIGHT



PERSONNEL	TITLE	PERSONNEL	TITLE	COUNTY	DATE
Schneider		Potts		Seneca	11-19-68
Mosser				S. R. 18	WEATHER Cloudy
Barbour				SEC. Republic to San. Co. Line	TEMP. 35°
Redding					

DESCRIPTION Ties for Control Points LEFT CENTER LINE RIGHT JOB NO.

- ① SAN-18
- 109-A
- 109
- 108
- 107

