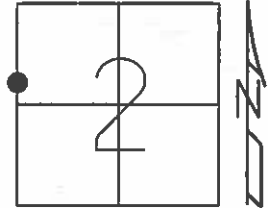


O.D.O.T. DISTRICT 2 SURVEY OFFICE (USE ONLY)

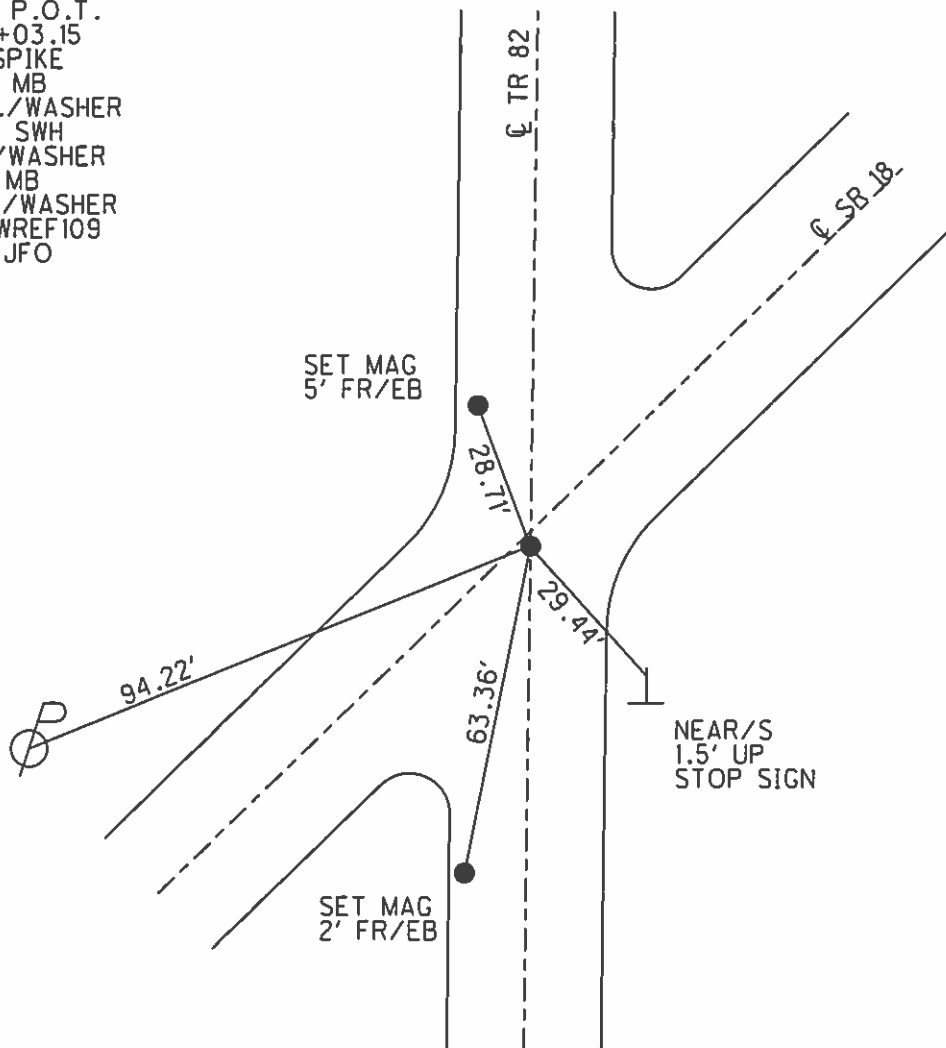
PERSONNEL _____ REFERENCE NO. 109 SHEET 17 OF 18
 NOTES RHOADES DATE 4/16/15 ROUTE SR 18
 H.C. WESTFALL WEATHER OVERCAST/WINDY COUNTY SENECA
 R.C. O'DONNELL TEMP. 60° TOWNSHIP THOMPSON
 _____ SECTION 2
 _____ T 3 N R 17 E

TYPE MONUMENT P.K.NAIL
 ON SURFACE - ~~BELOW~~ ON _____
~~LEFT~~ - ℄ PAV'T - RIGHT 0.7'
 - TO - EDGE PAVEMENT
 S.L.M. 1811+17.28



Grid: Northing: 577409.573 Easting: 1864374.352

RECORD: P.O.T.
 STA. 75+03.15
 FD R.R.SPIKE
 7/11/85, MB
 SET P.K./WASHER
 10/1/85, SWH
 FD P.K./WASHER
 8/1/02, MB
 SET MAG/WASHER
 GPS, NEWREF109
 7/7/15, JFO



O.D.O.T. DISTRICT 2 SURVEY OFFICE

PERSONNEL

REFERENCE NO. 109

SHEET OF

NOTES BARNHISEI

H.C. LOEHRKE

R.C. HOFFMAN

DATE 7-11-85

WEATHER CLEAR

TEMP. 65°

ROUTE 18

COUNTY SENECA

TOWNSHIP THOMPSON

SECTION 2

T3 NR 17 E

TYPE MONUMENT RR SPIKE

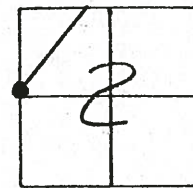
ON SURFACE - BELOW yes

LEFT - & PAV'T. - RIGHT Both PAV'T'S

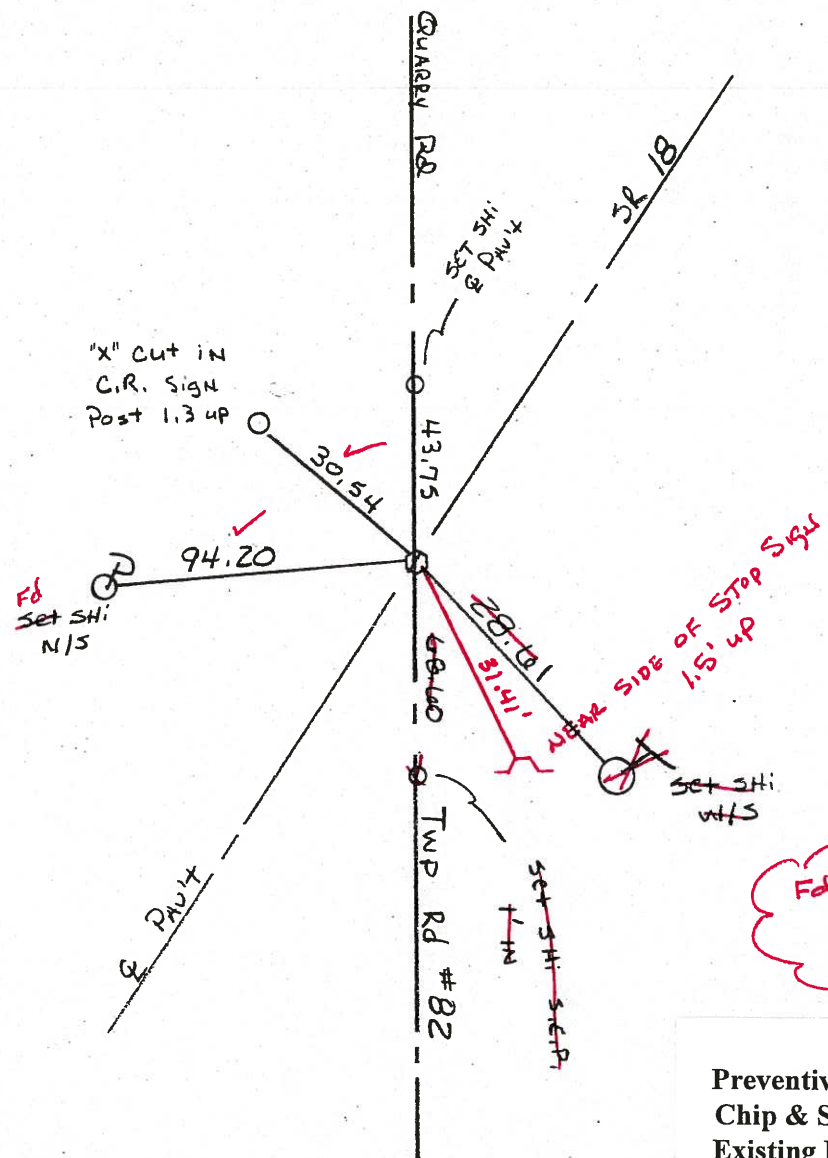
TO EDGE PAVEMENT

S.L.M. 1813+54

Set PK/WASHER
10-1-85 SWH



RECORDED
P.O.T.
75+03.15



Set PK/Washer
8-1-02
MS

Preventive Maintenance
Chip & Seal 2002
Existing Point Uncovered
Date 12-06-02

O.D.O.T. DISTRICT 2 SURVEY OFFICE

PERSONNEL

REFERENCE NO. 109

SHEET OF

NOTES BARNHISEL

H.C. LOEHRKE

R.C. HOFFMAN

DATE 7-11-85

WEATHER CLEAR

TEMP. 65°

ROUTE 18

COUNTY SENECA

TOWNSHIP THOMPSON

SECTION 2

T.3 N. R. 17 E

TYPE MONUMENT RR SPIKE

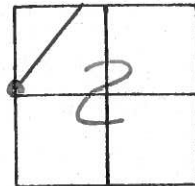
ON SURFACE - ~~BELOW~~ yes

LEFT - ~~C~~ PAV'T. - ~~RIGHT~~ Both PAV'TS

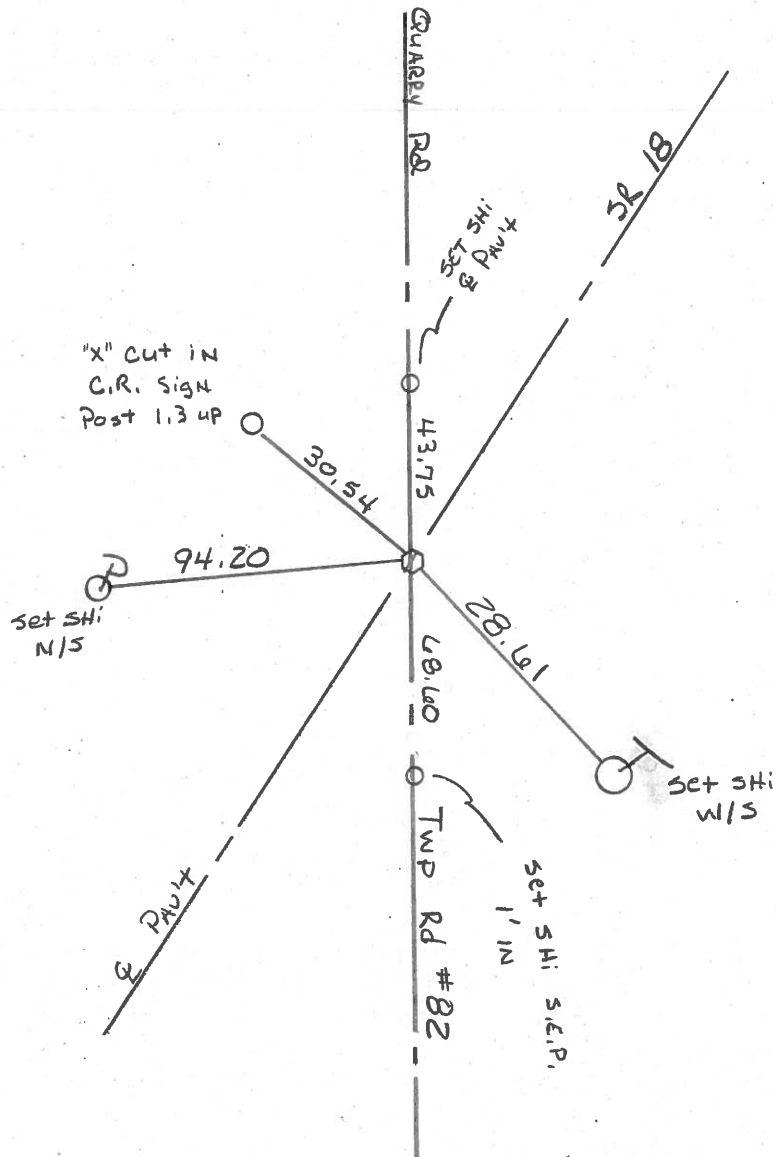
TO EDGE PAVEMENT

S.L.M. 1813+54

Set RR WASHER
10-1-85 SWH



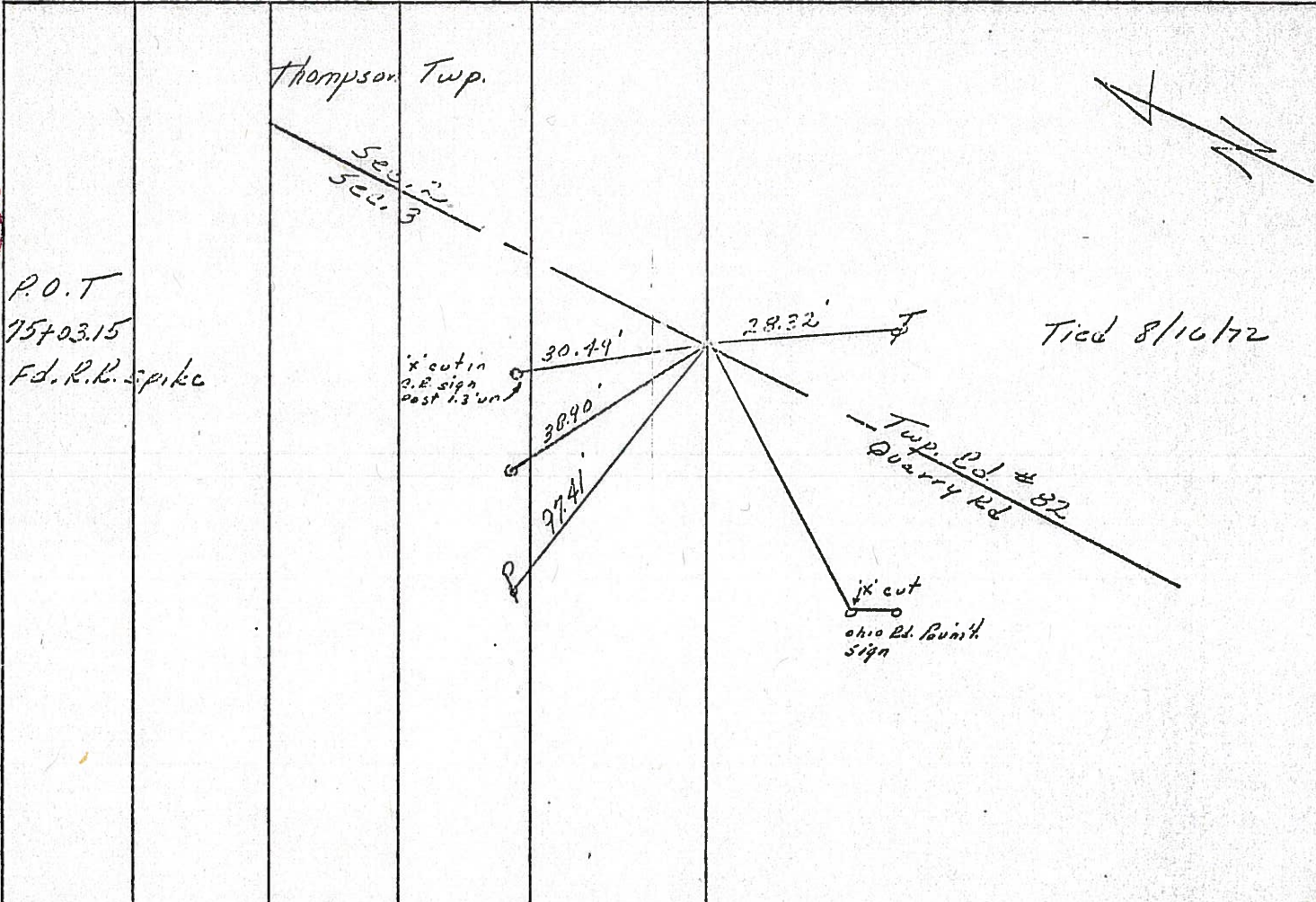
RECORDED
P.O.T.
75+03.15



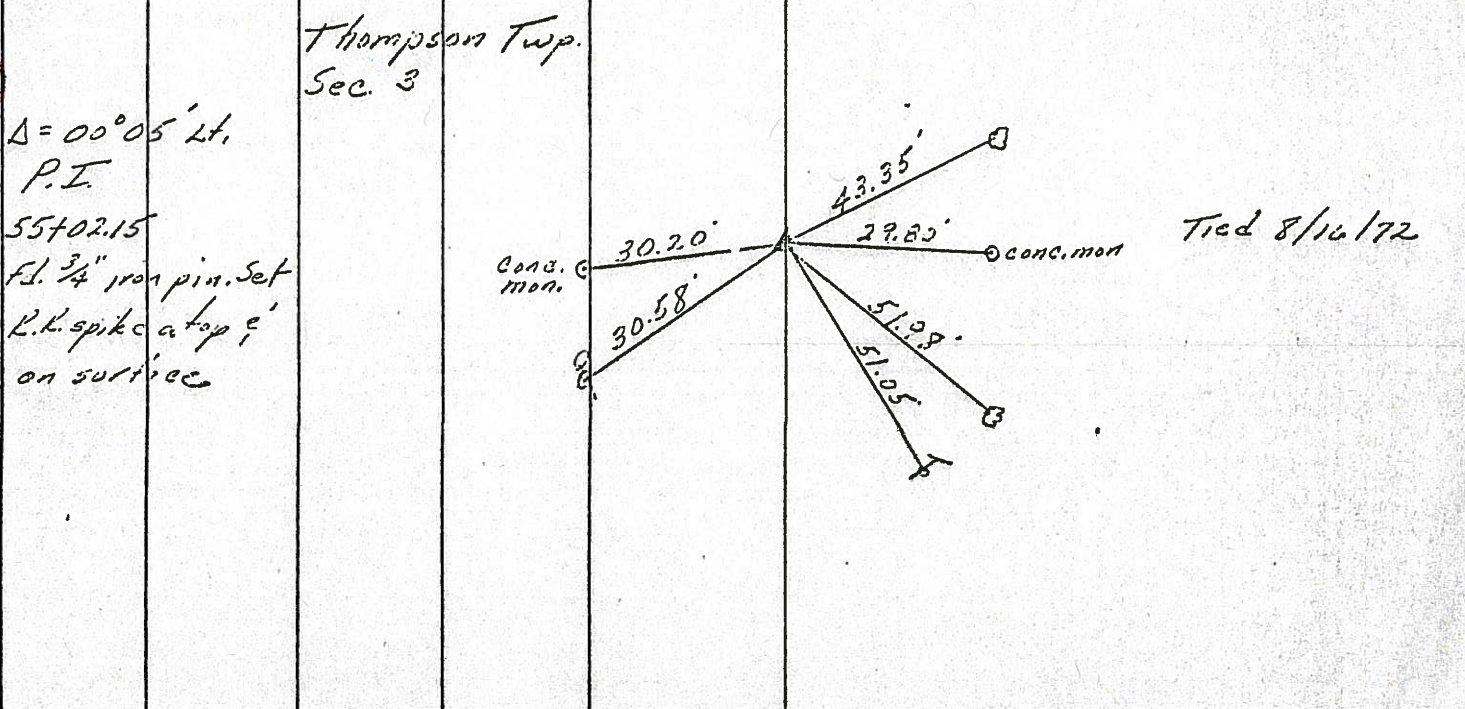
PERSONNEL	TITLE	PERSONNEL	TITLE	COUNTY	DATE	WEATHER	TEMP.
Ash				Seneca	11/24/72	Sunny	30°
Cromin				S. R. #18 (S.H. #257)			
Ripple				SEC. R-3			
Anderson							

DESCRIPTION *Ties for Control Points - E. Sub 12 to Seneca Co. Line* JOB NO. _____

109

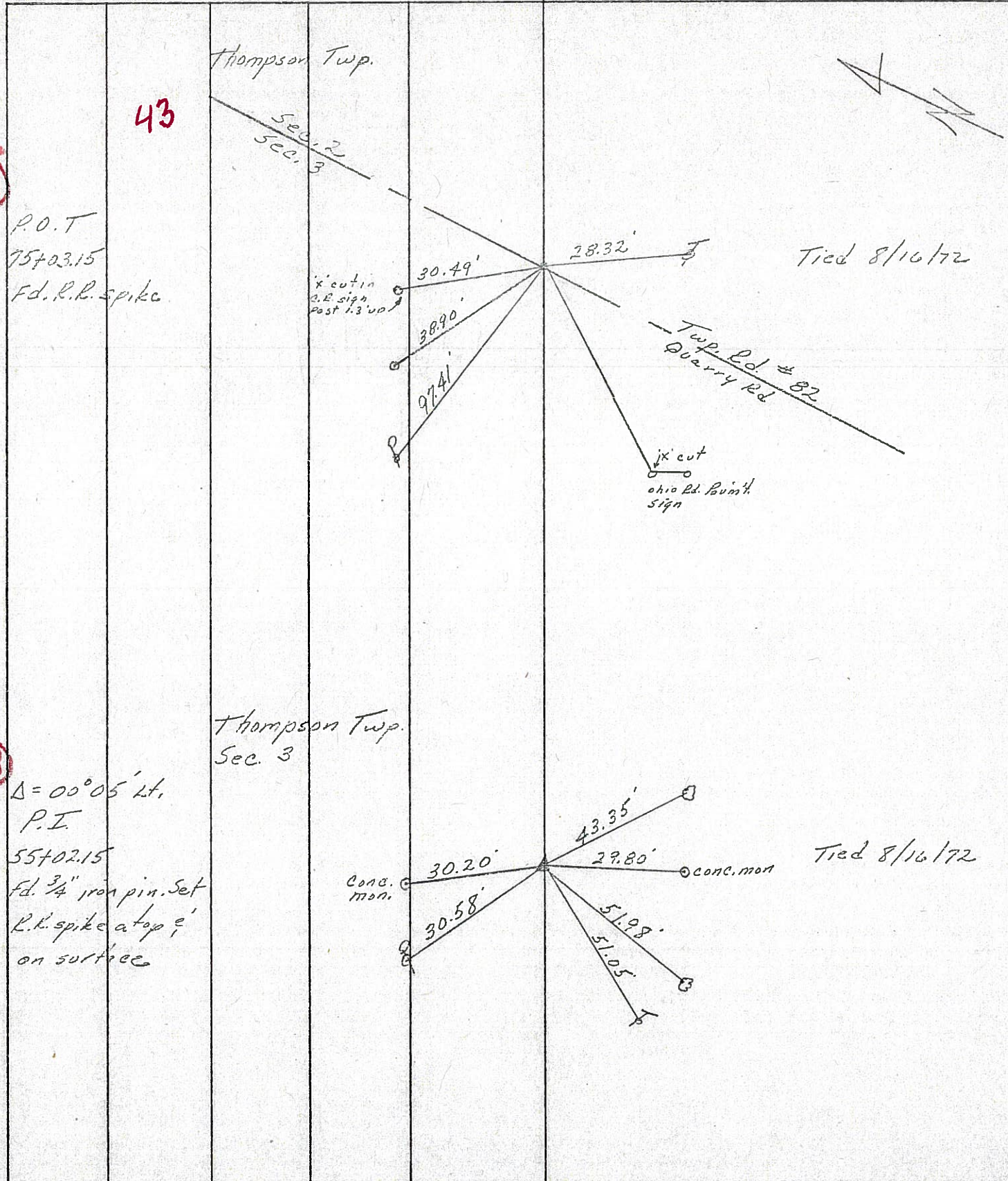


108



PERSONNEL	TITLE	PERSONNEL	TITLE	COUNTY	DATE
Ash				Seneca	11/24/72
Cronin				S. R. #18 (S.H. #267)	WEATHER sunny
Ripple				SEC. R-3	TEMP. 30°
Anderson					

DESCRIPTION Ties for Control Points - Republic to Sandusky Co. Line JOB NO. _____



43

109

P.O.T
75+03.15
Fd. R.R. spike

'ix' cut in
O.E. sign
Post 1.3' up

Tied 8/16/72

Twp. Ed. # 82
Quarry Rd

'ix' cut
Ohio Ed. Point
sign

108

$\Delta = 00^{\circ}05' Lt.$
P.I
55+02.15
Fd. 3/4" iron pin. Set
R.k. spike at top 9'
on surface

Thompson Twp.
Sec. 3

conc.
man.

Tied 8/16/72

conc. man

PERSONNEL	TITLE	PERSONNEL	TITLE
Ash			
Cronin			
Ripple			
Anderson			

COUNTY Seneca

DATE 11/24/72

S. R. #18 (S.H. #267)

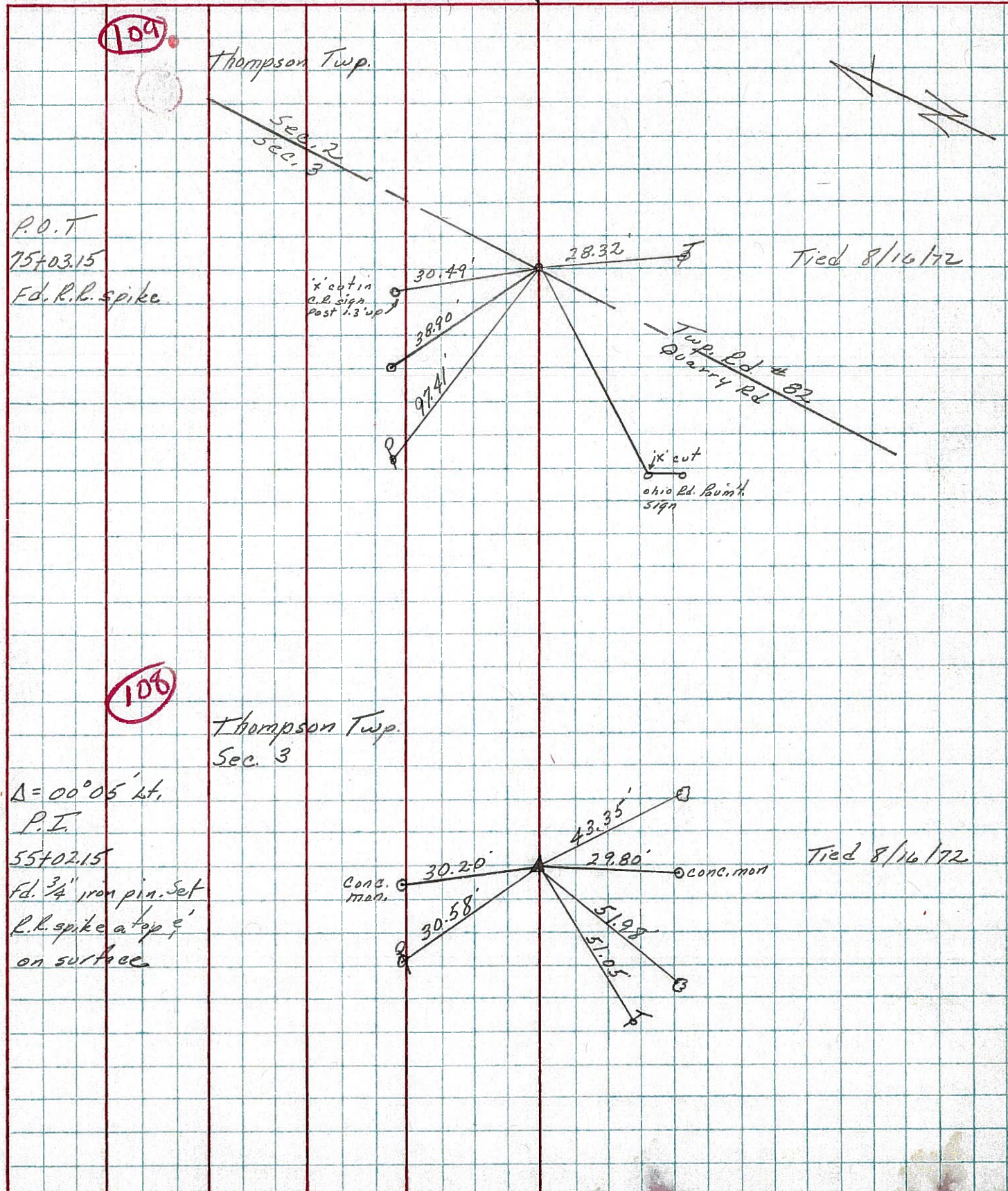
WEATHER sunny

SEC. R-3

TEMP. 30°

DESCRIPTION Ties for Control Points - Republic to Sandusky Co. Line JOB NO.

LEFT CENTER LINE RIGHT



PERSONNEL	TITLE	PERSONNEL	TITLE	COUNTY	DATE
Schneider		Potts		Seneca	11-19-68
Mosser				S. R. 18	WEATHER Cloudy
Barbour				SEC. Republic to San. Co. Line	TEMP. 35°
Redding					

DESCRIPTION Ties for Control Points JOB NO. _____

① SAN-18

109-A

109

108

107

