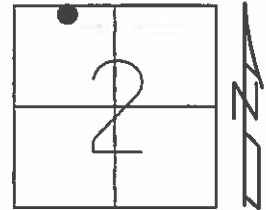


O.D.O.T. DISTRICT 2 SURVEY OFFICE (USE ONLY)

PERSONNEL _____ REFERENCE NO. 109 A SHEET 18 OF 18

NOTES RHOADES DATE 4/16/15 ROUTE SR 18
 H.C. WESTFALL WEATHER OVERCAST/WINDY COUNTY SENECA
 R.C. O'DONNELL TEMP. 60° TOWNSHIP THOMPSON
 _____ SECTION 2
 _____ T 3 N R 17 E

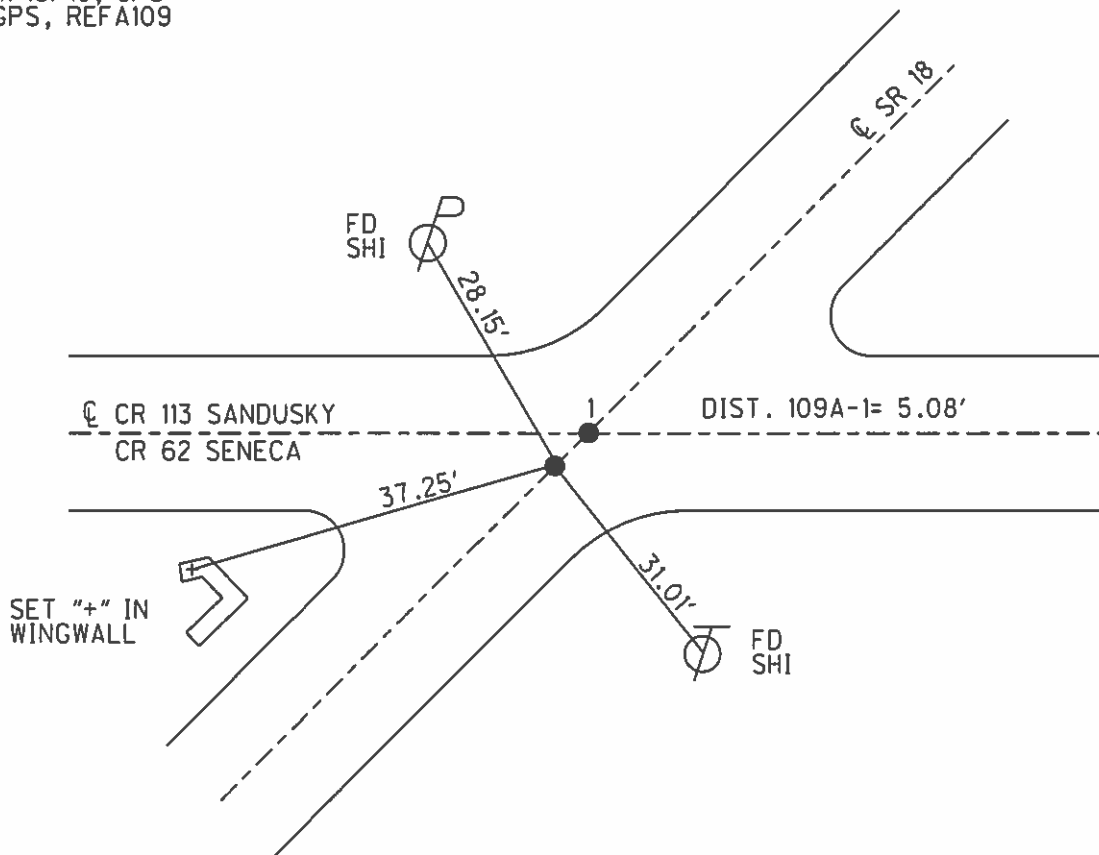
TYPE MONUMENT P.K./WASHER
 ON SURFACE - ~~BELOW~~ ON _____
 LEFT - ☉ PAV'T - ~~RIGHT~~ 1.5'
 _____ TO _____ EDGE PAVEMENT
 S.L.M. 1835+73.74



Grid: Northing: 579095.396 Easting: 1866161.202

PREVIOUS MONUMENTS:

- R.R. SPIKE
- R.R. SPIKE
- SET P.K./WASHER
- 9/16/91, CHENEY
- FD P.K./WASHER
- 8/1/02, MB
- 4/16/15, JFO
- GPS, REFA109



O.D.O.T. DISTRICT 2 SURVEY OFFICE

PERSONNEL

REFERENCE NO. 109A
~~1A~~

SHEET 1 OF 8

NOTES MOSER

DATE 7/26/10

ROUTE SR 18

H.C. GOLDBERG

WEATHER CLEAR

COUNTY ~~SANDUSKY~~ SENECA

R.C. HARBAUGH

TEMP. 85°

TOWNSHIP YORK

SECTION ~~35~~ 2

T 4 N R 17 E

TYPE MONUMENT P.K./WASHER

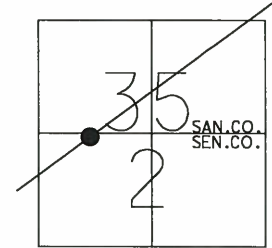
ON SURFACE - ~~BELOW~~ ON

LEFT - C PAV'T - ~~RIGHT~~ 2.5'

7.2' TO LT EDGE PAVEMENT

S.L.M. B= 0+00

Grid: Northing: 579095.413 Easting: 1866161.231

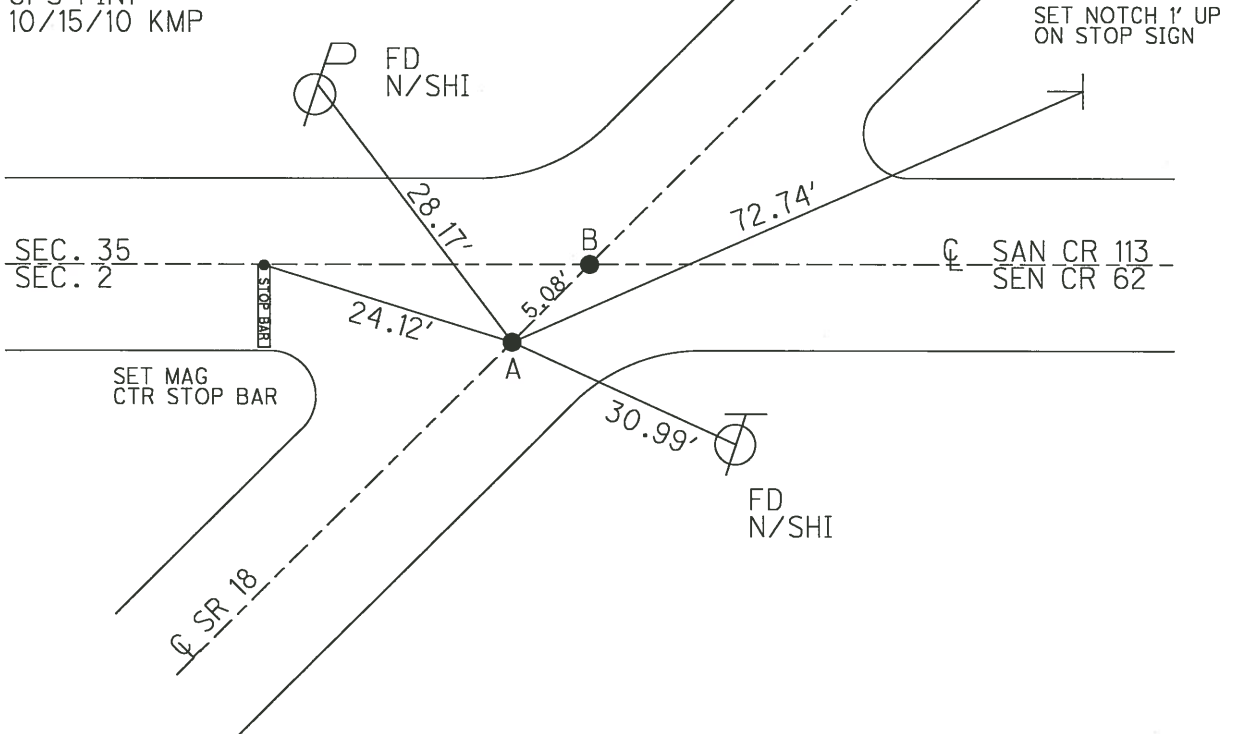


NOTE:
PREVIOUS MONUMENTS
WERE R.R.SPIKES

FD P.K./WASHER
8/01/02, 12/06/02, 4/22/09

GPS SV1, TIED
7/26/10 KPM

RESET MAG/WASHER
GPS FIN1
10/15/10 KMP



O.D.O.T. DISTRICT 2 SURVEY OFFICE

PERSONNEL

REFERENCE NO. 1

SHEET 1 OF 5

NOTES CHENEY

H.C. BARBOUR

DATE 9-16-1991

ROUTE 18

R.C. RIPPLE

WEATHER SUNNY

COUNTY SANDUSKY

TEMP. 90°

TOWNSHIP YORK

SECTION 35

TAN RITE

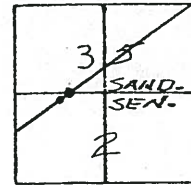
TYPE MONUMENT SET PK'S / WASHERS

ON SURFACE - BELOW

LEFT- & PAW'T. - RIGHT 1.5'

TO EDGE PAVEMENT

S.L.M. 0 + 00



PREVIOUS MONUMENTS:
ON SECTION LINE

R.R. SPK.

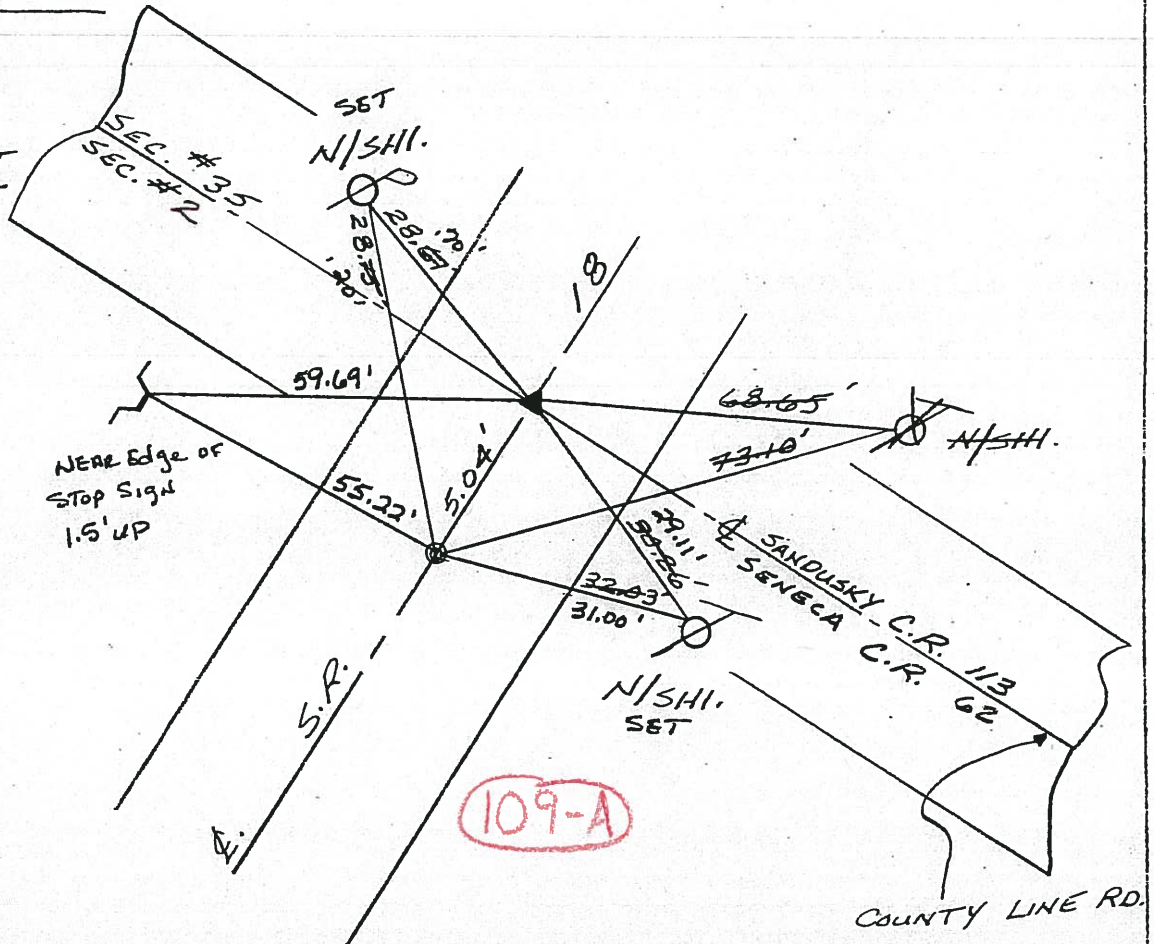
R.R. SPK.

IRON PIN

*OTHER POINT

R.R. SPK.

R.R. SPK.



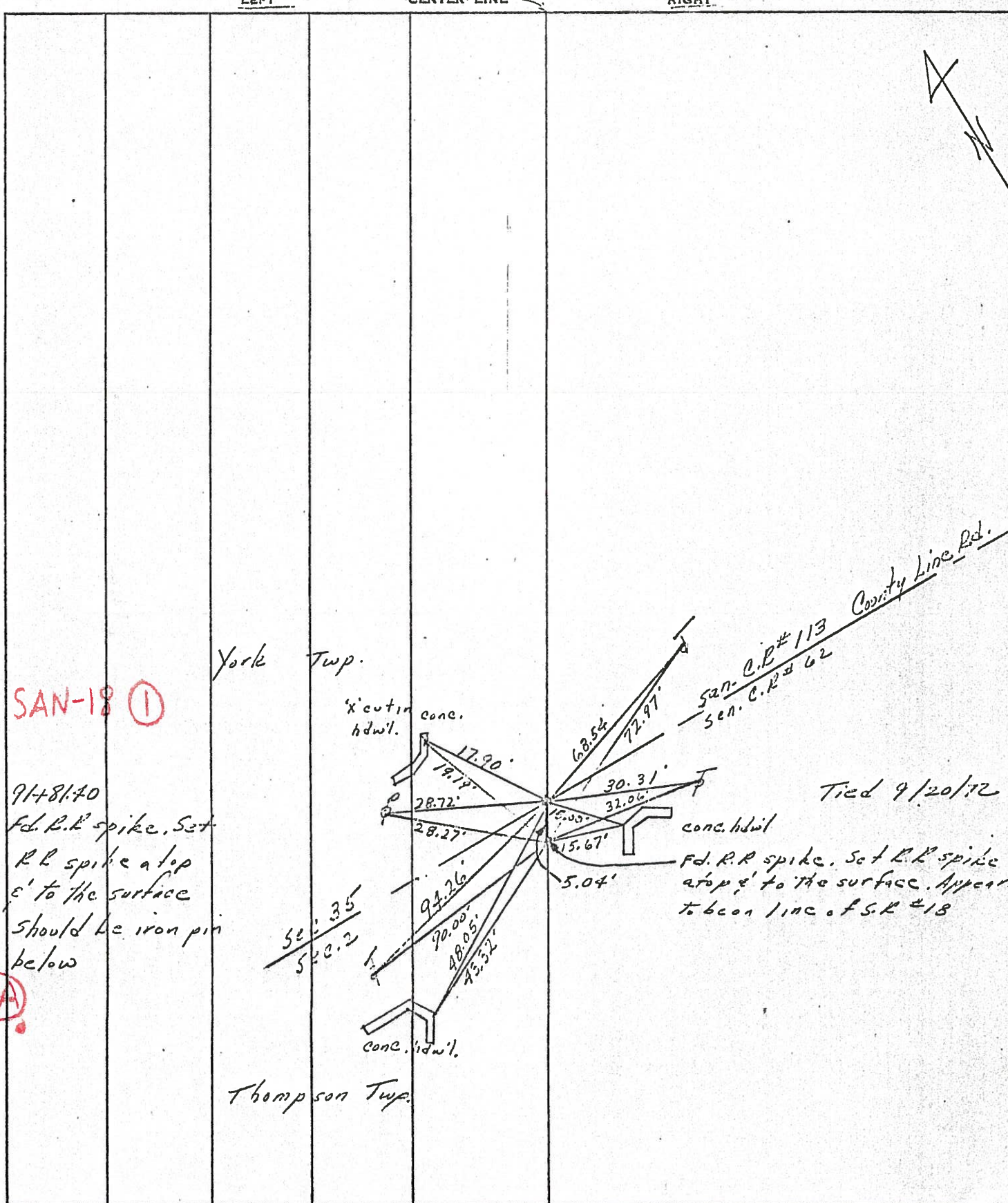
FD PK'S/WASHERS
8-1-02
MB

Preventive Maintenance
Chip & Seal 2002
Existing Point Uncovered
Date 12-06-02

PERSONNEL	TITLE	PERSONNEL	TITLE
Ash			
Crocin			
Rippola			
Anderson			

COUNTY Schenectady DATE 11/22/72
 S. R. #18 (S.H. #207) WEATHER Sunny
 SEC. R-3 TEMP. 30°

DESCRIPTION Ties for Control Points - Republic to Sandusky Co. Line JOB NO. _____



SAN-18 ①

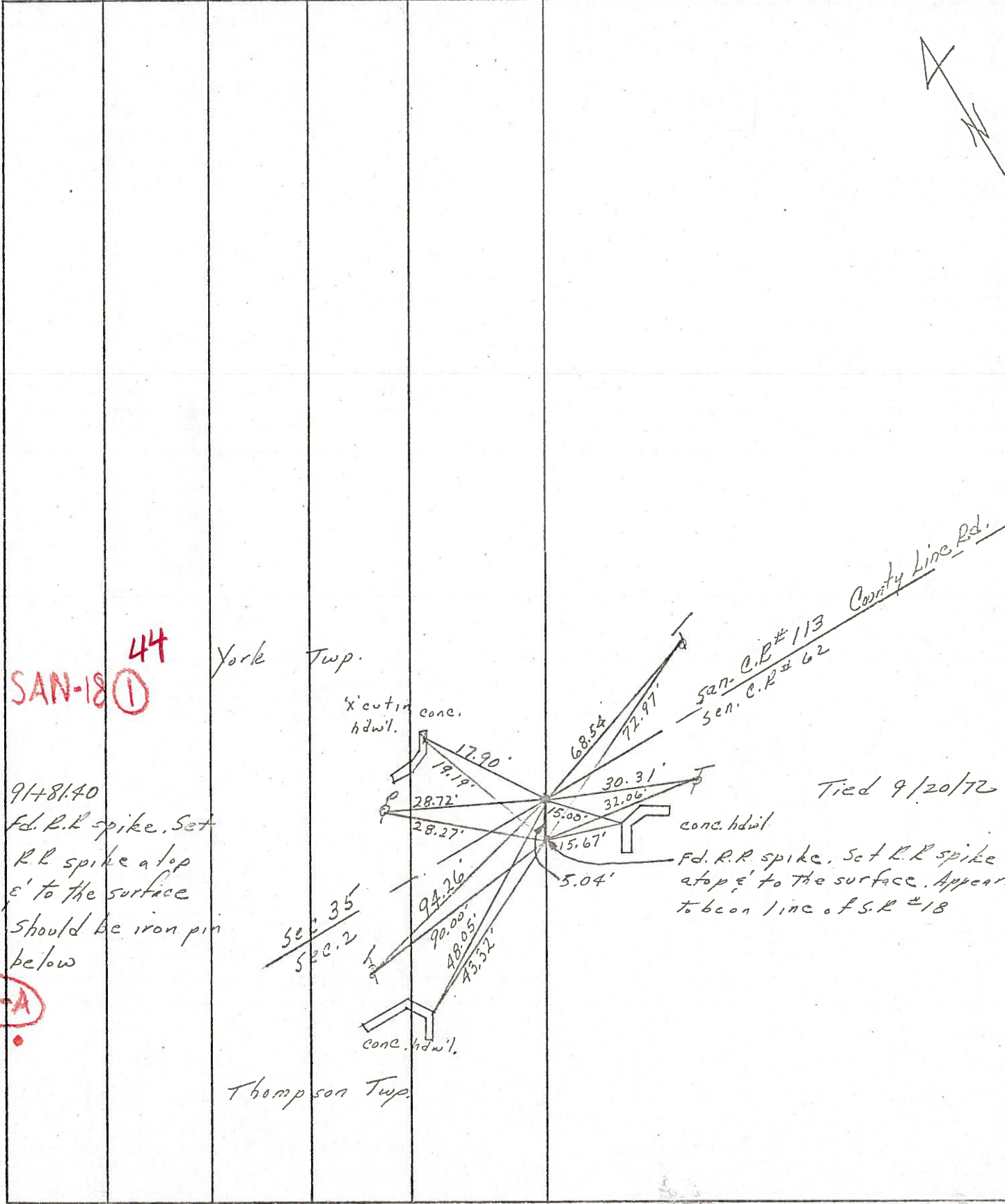
91+81.70
 Fd. R.R. spike. Set
 R.R. spike atop
 8' to the surface
 should be iron pin
 below

109-A

PERSONNEL	TITLE	PERSONNEL	TITLE
Ash			
Cronin			
Ripple			
Anderson			

COUNTY Seneca DATE 11/22/72
 S. R. #18 (S.H. #207) WEATHER sunny
 SEC. R-3 TEMP. 30°

DESCRIPTION Ties for Control Points - Republic to Sandusky Co. Line JOB NO. _____



SAN-18 ① **44**

91+81.40
 Fd. R.R. spike. Set
 R.R. spike atop
 6' to the surface
 should be iron pin
 below

109-A

Thompson Twp.

PERSONNEL TITLE PERSONNEL TITLE

Ash
Cronin
Ripple
Anderson

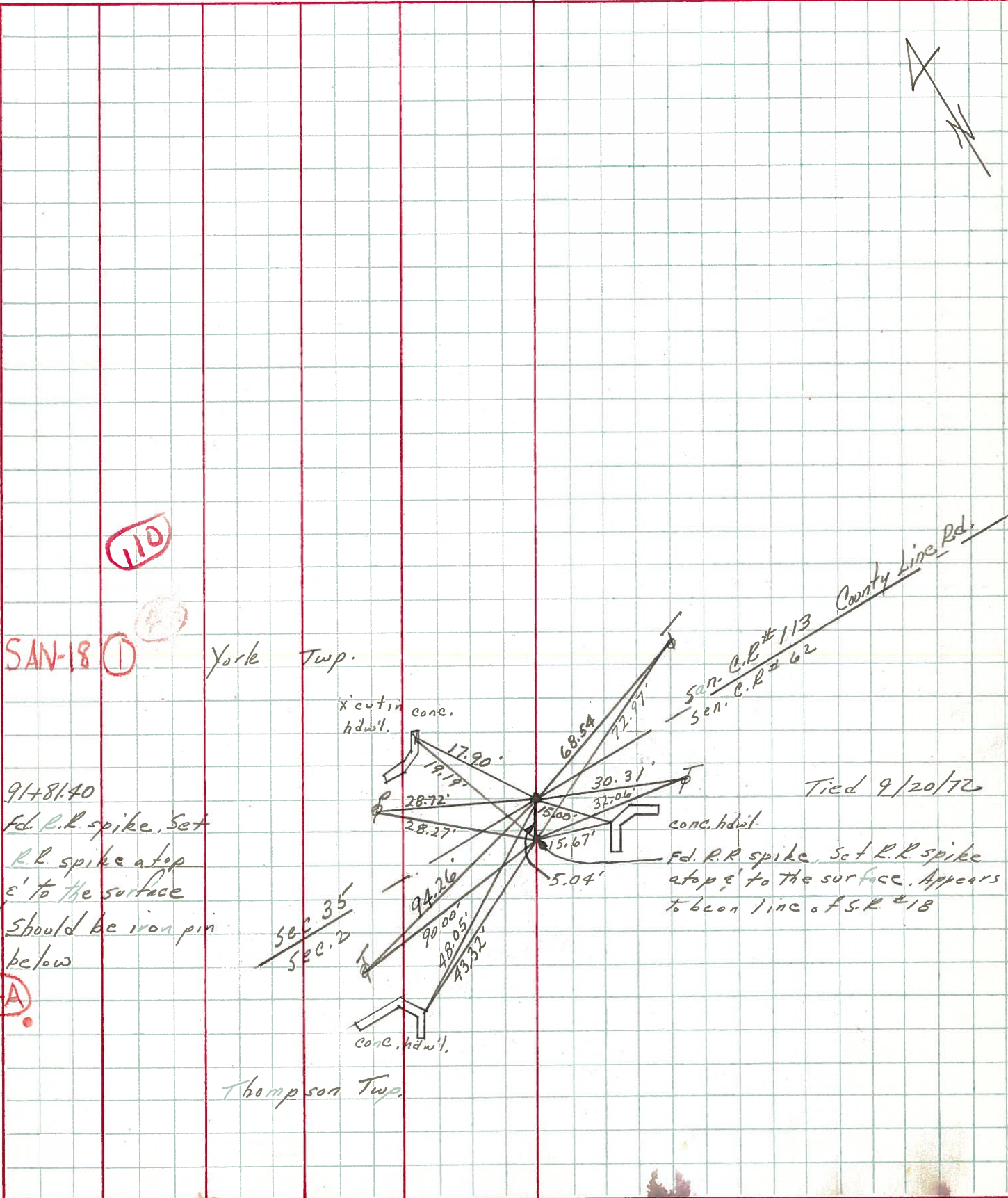
COUNTY Seneca DATE 11/24/72

S. R. #18 (S.H. #267) WEATHER sunny

SEC. R-3 TEMP. 30°

DESCRIPTION Ties for Control Points - Republic to Sandusky Co. Line JOB NO.

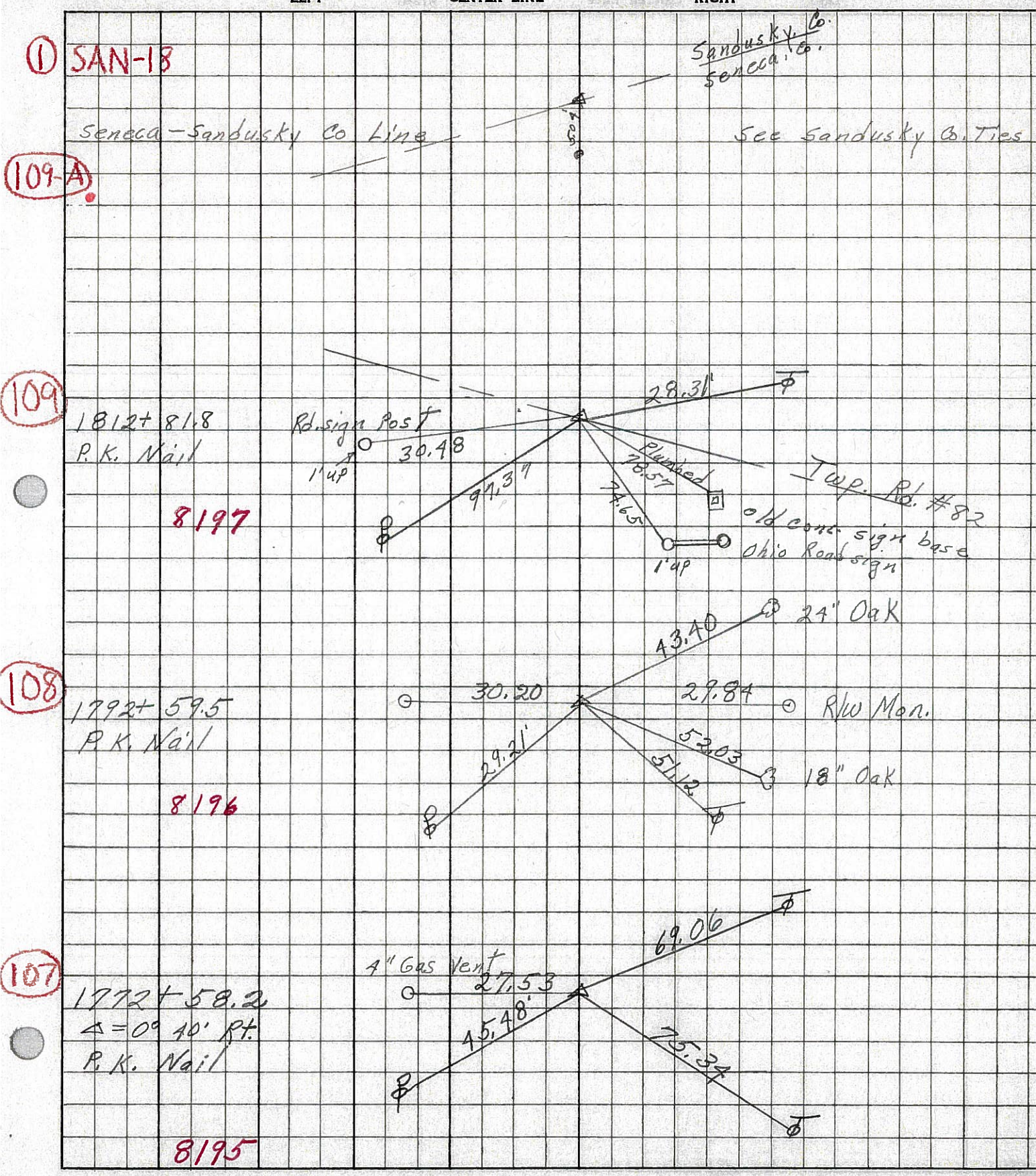
LEFT CENTER LINE RIGHT



PERSONNEL	TITLE	PERSONNEL	TITLE
Schneider		Potts	
Mosser			
Barbour			
Redding			

COUNTY Seneca DATE 11-19-68
 S. R. 18 WEATHER Cloudy
 SEC. Republic to San. Co. Line TEMP. 35°

DESCRIPTION Ties for Control Points JOB NO. _____



O.D.O.T. DISTRICT 2 SURVEY OFFICE

PERSONNEL

REFERENCE NO. 1

SHEET 1 OF 5

NOTES CHENEY

H.C. BARBOUR

R.C. RIPPLE

DATE 9-16-1991

WEATHER SUNNY

TEMP. 90°

ROUTE 18

COUNTY SANDUSKY

TOWNSHIP YORK

SECTION 35

T4N R17E

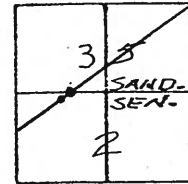
TYPE MONUMENT SET PK'S / WASHERS

ON SURFACE - BELOW

LEFT - 0 PAV'T. - RIGHT 1.5'

TO EDGE PAVEMENT

S.L.M. 0 + 00

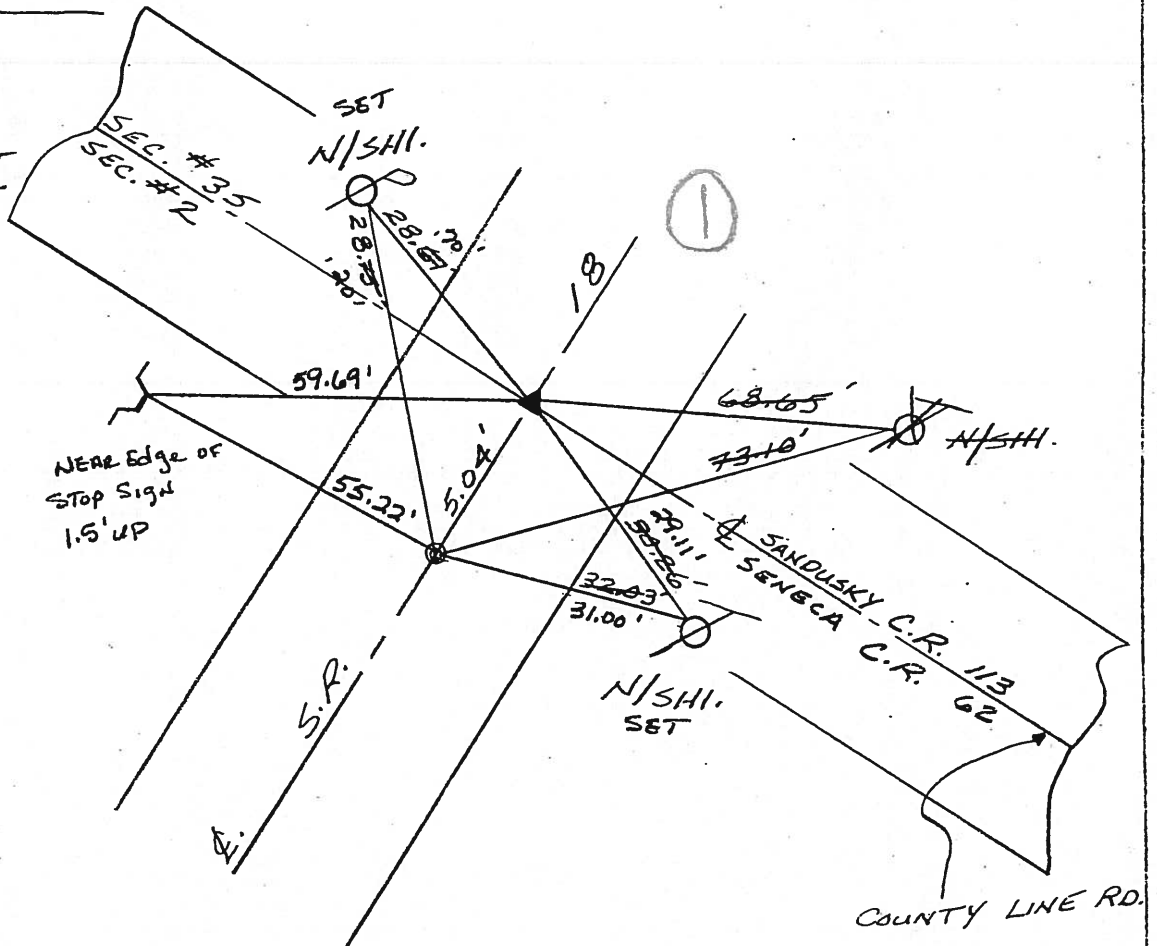


PREVIOUS MONUMENTS:
ON SECTION LINE

- R.R. SPK.
- R.R. SPK.
- IRON PIN

*OTHER POINT

- R.R. SPK.
- R.R. SPK.

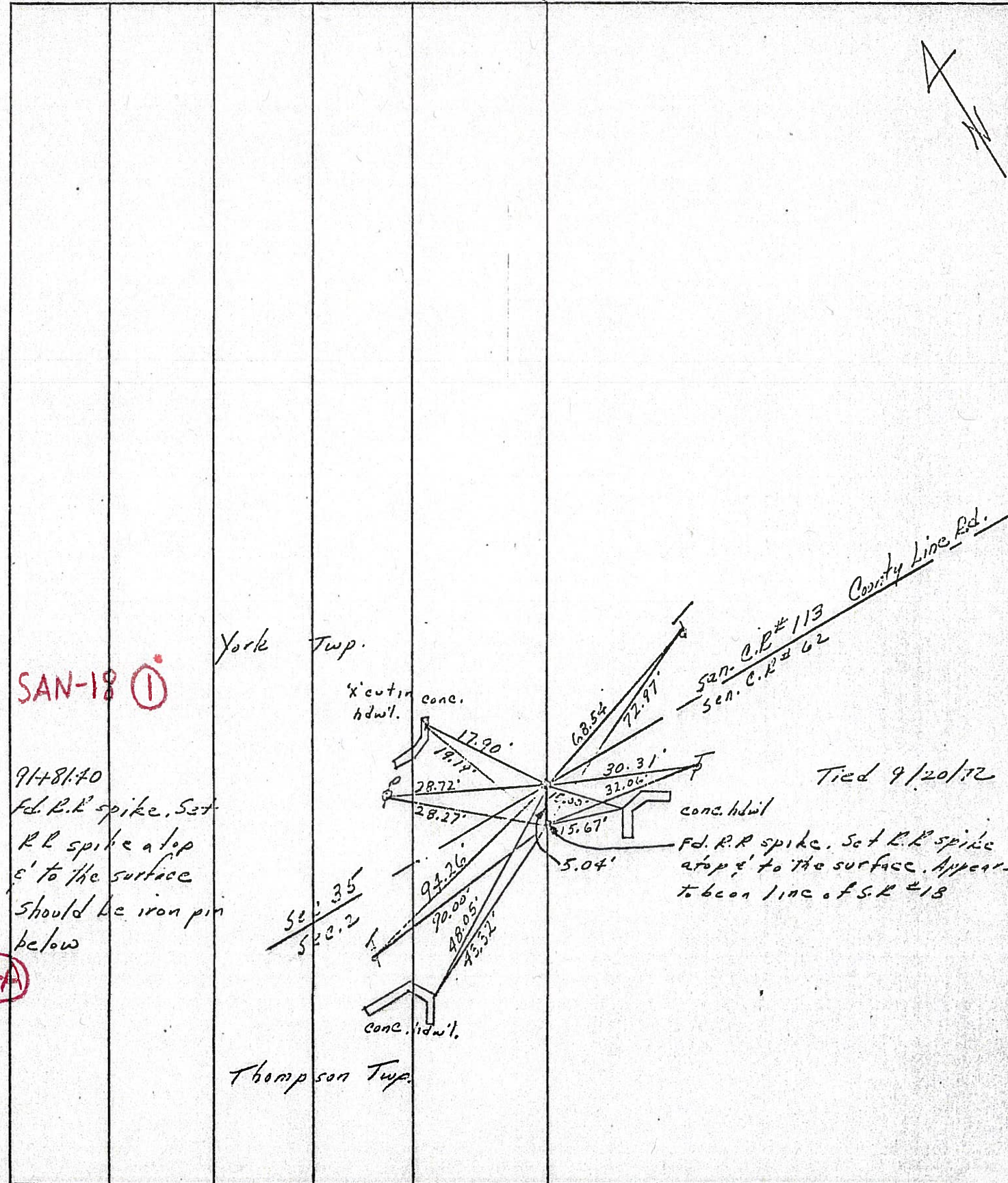


F& PK'S/WASHERS
 8-1-02
 MB

Preventive Maintenance
 Chip & Seal 2002
 Existing Point Uncovered
 Date 12-06-02

PERSONNEL	TITLE	PERSONNEL	TITLE	COUNTY	DATE
Ash				Seneca	11/22/72
Crocin				S. R. #18 (S.H. #207)	WEATHER sunny
Rippta				SEC. R-3	TEMP. 30°
Anderson					

DESCRIPTION *Ties for Control Points - Republic to Sandusky Co. Line* JOB NO. _____



PERSONNEL	TITLE	PERSONNEL	TITLE
Ash			
Cronin			
Ripple			
Anderson			

COUNTY Seneca

DATE 11/24/72

S. R. #18 (S.H. #267)

WEATHER sunny

SEC. R-3

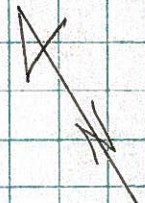
TEMP. 30°

DESCRIPTION Tics for Control Points - Republic to Sandusky Co. Line JOB NO.

LEFT

CENTER LINE

RIGHT



110

SAN-18 ①

York Twp.

exc. in conc. hdwl.

san. C.R. #113
sen. C.R. #62

County Line Rd.

91+81.40

Fd. R.R. spike. Set

R.R. spike atop
ε' to the surface

Should be iron pin
below

Tied 9/20/72

conc. hdwl.

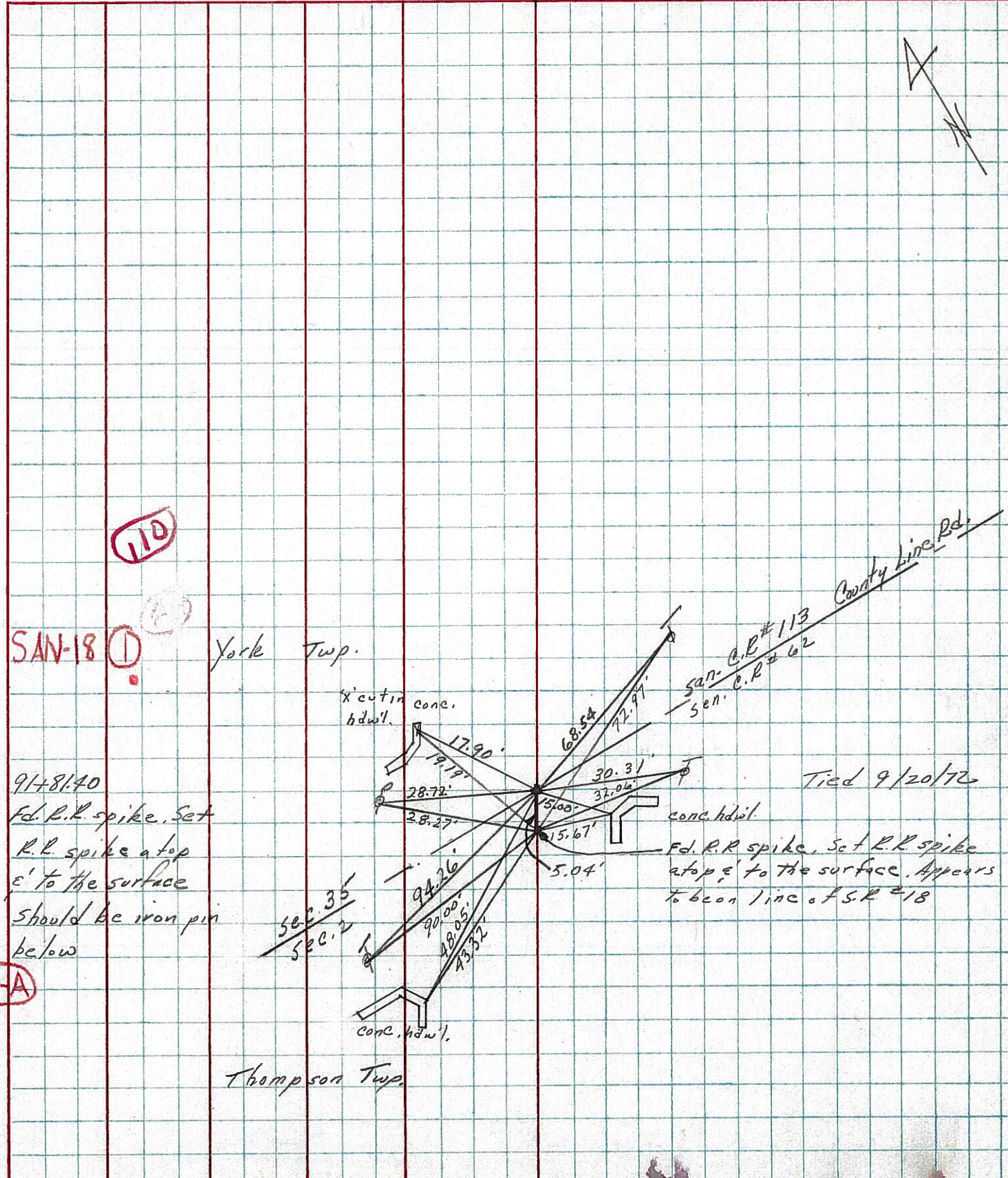
Fd. R.R. spike. Set R.R. spike
atop ε' to the surface. Appears
to be on line of S.R. #18

109-A

sec. 35
sec. 2

conc. hdwl.

Thompson Twp.



PERSONNEL	TITLE	PERSONNEL	TITLE	COUNTY	DATE
Schneider		Potts		Seneca	11-19-68
Mosser				S. R. 18	WEATHER Cloudy
Barbour				SEC. Republic to San. Co. Line	TEMP. 35°
Redding					

DESCRIPTION Ties for Control Points JOB NO. _____

