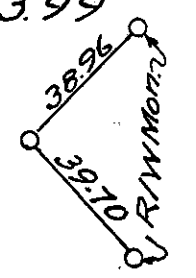


Scanned July 1947

P.I. Sta. 107+43.99



Curve Data  
Δ = 8°-30' Lt.  
D = 4°-00'  
R = 1432.96  
T = 106.47  
L = 212.50

P.I. Sta. 117+11.97

Δ = 8°-30' Lt.

D = 4°-00'

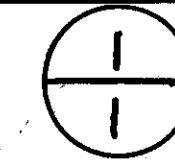
R = 1432.96

T = 106.47

L = 212.50

Nail in Pole Nail in Walnut

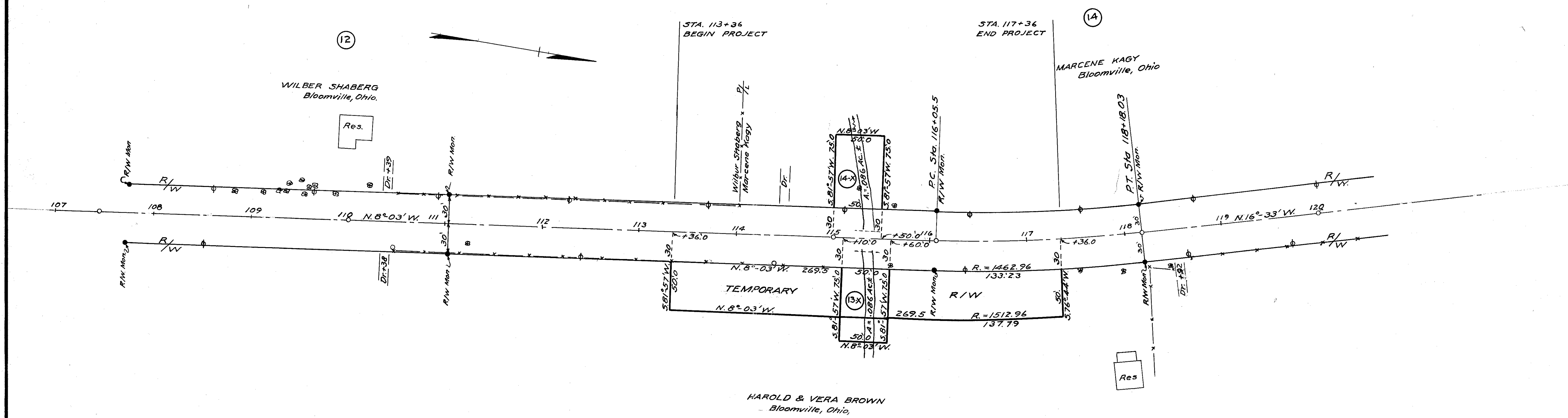
SENECA COUNTY  
S.H. 485 SEC. "G" BRIDGE  
R / W PLAN



DATE APRIL 19, 1937 DRAWN BY A.P.  
REVISED  
LENGTH OF PROJECT 0.076 MI.

*R/W checked  
easements stained as shown  
3/22/44*

BLOOM TWP. SEC. 21 T1N R16E



R6019 #1 G-29

Scanned July 1997

SH. 485-SEC. G BR  
SENECA COUNTY  
R/W PLANS  
BRIDGE NO. SE 19-20



BLOOM TOWNSHIP SECTION 28



R/W checked  
easements obtained as shown  
3/23/44

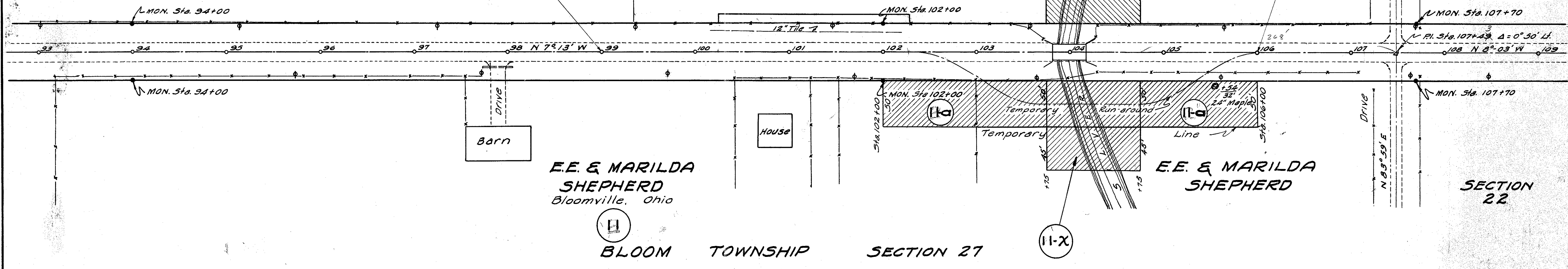
GEORGE COOLEY  
Bloomville, Ohio  
PART 2 OF PROPOSAL 1  
STA. 103+93.92 TO STA. 104+40.8

GEORGE COOLEY

SECTION 21

BEGINNING OF PART 2 OF PROP. 2  
STA. 99+00

END OF PART 2 OF PROP. 2  
STA. 106+00



PROFILE

