

#6017

S.H.(I.C.H.) No. 485
SECTION H
SENECA COUNTY
SR19 SLM 4.06 ~ 9.08

STATE OF OHIO
DEPARTMENT OF HIGHWAYS
BUCYRUS-CLYDE ROAD
S.H.(I.C.H.) NO. 485 SECTION-H PET. NO. 6570
SENECA COUNTY

BLOOM & SClPIO TOWNSHIPS MAY 1928

The Standard Specifications of the State of Ohio, Department of Highways in force on date of contract will govern this improvement.

I hereby approve these plans and declare that the making of this improvement will require the closing of traffic of the highway and that detours will be provided as shown on the plans and estimates.

Approved: Harold Z. Nakas
Date, 6-5-29 Resident District Deputy Director

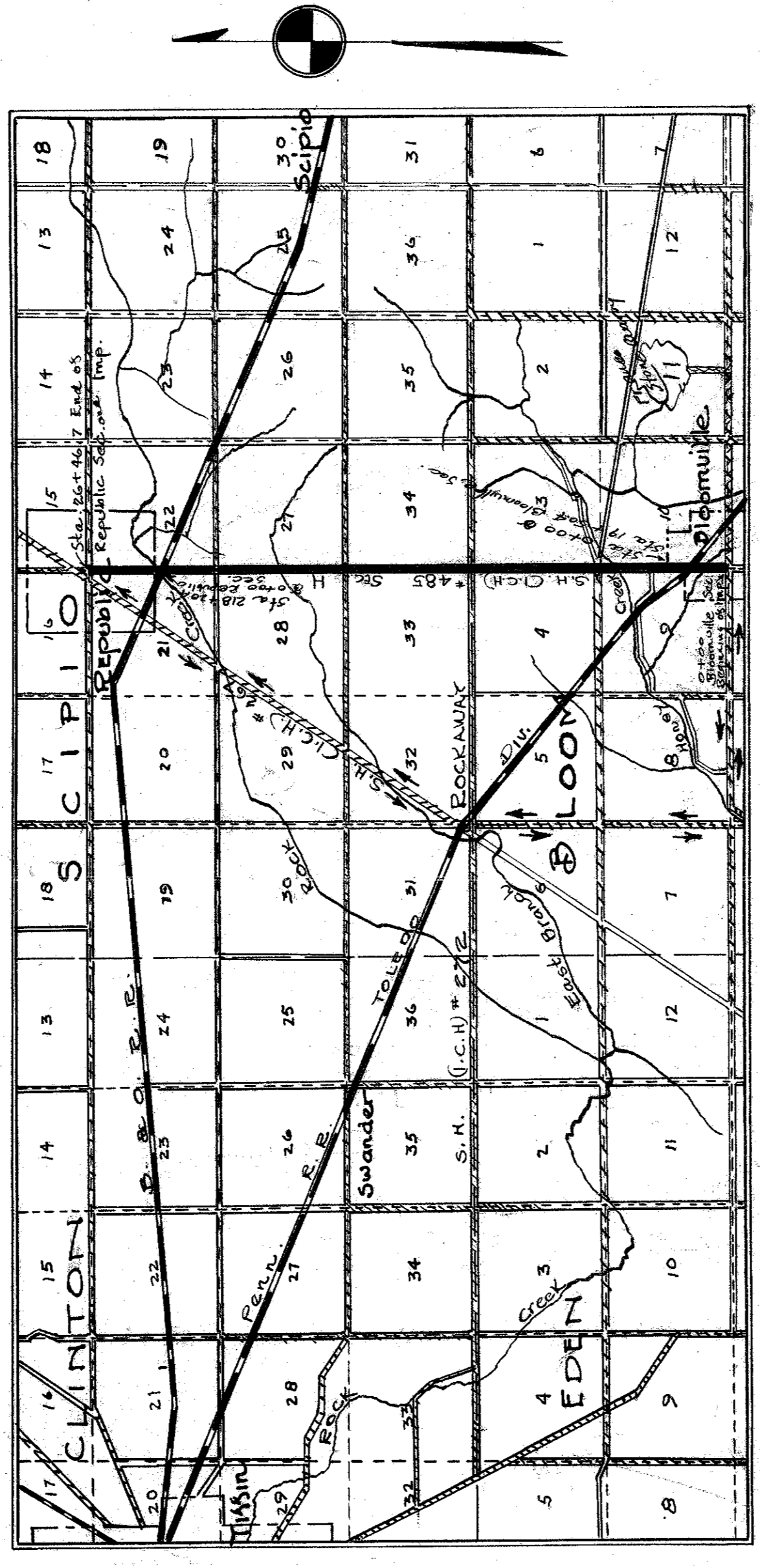
Approved: John F. Haller
Date, 6-25-29 Resident Division Deputy Director

Approved: Carl J. Reigter
Date, 7/1/29 Chief Engineer
Bureau of Construction.

Approved: _____
Date, _____ Chief Engineer
Bureau of Maintenance

Approved: _____
Date, _____ Chief Engineer
Bureau of Bridges

Approved: Robert M. Wood
Date, 7/1/29 Director of Highways.



CONVENTIONAL SIGNS.

- State Line
- County Line
- Township Line
- Section Line
- Property Line not fenced
- Center Line
- City or Village Line
- Fence
- Telephone or Telegraph
- Steam Railroad
- Electric Line
- Guard Rail
- Drain Pipe - new
- Drain Pipe - old

We, the Commissioners of Seneca County, hereby approve these plans and certify that the right-of-way 60 feet wide is available for the construction maintenance and repair of the above highway.

W. H. Reigter
W. H. Myers
M. R. Hooper

Date, 6/5/29 County Commissioners.

LOCATION PLAN
SCALE OF MILES

- PORTION TO BE IMPROVED
- DETOURS SHOWN THUS
- HAUL ROADS
- IMPROVED ROADS

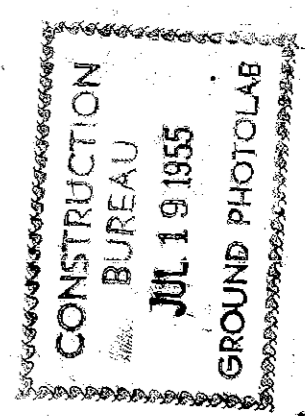
INDEX OF SHEETS
PROJECT TRACINGS

| Title Page | Page # |
|---|-----------------------|
| Typical Cross Section Plans and Profile | # 1, # 2, # 3 to # 11 |
| Cross Sections. | # 12 to # 28 |
| Structural Plans. | # 29 to # 33 |
| Summary Sheet | # 34 and # 35 |

SUPPLEMENTAL PRINTS OF STRUCTURAL STDS.

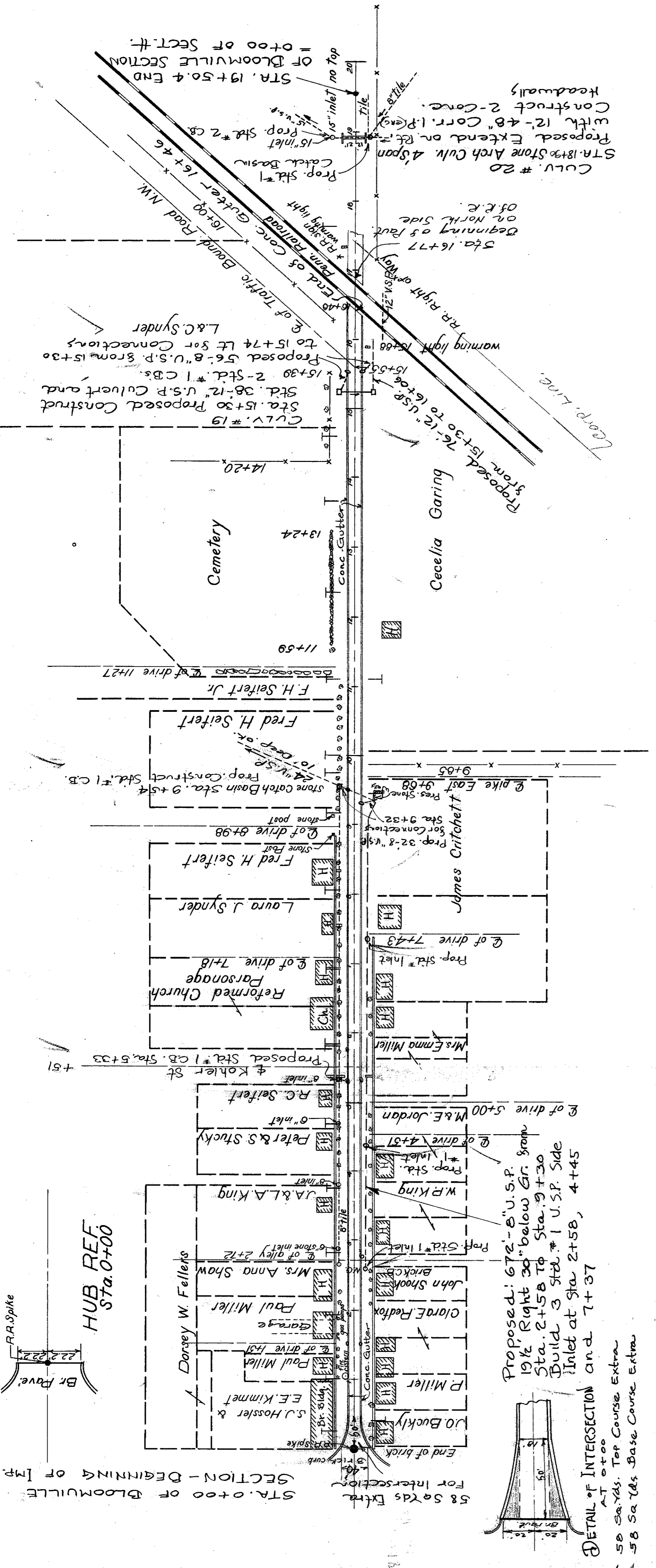
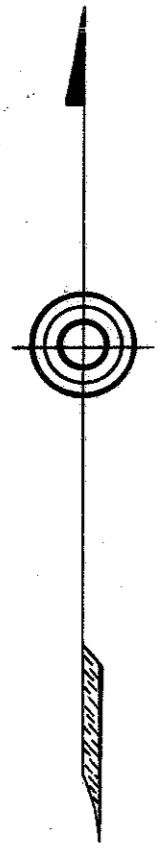
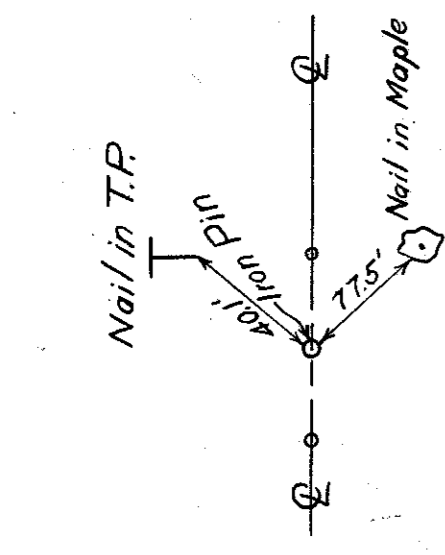
| Drawing Number | Job |
|----------------|-------------|
| " | 300 |
| " | 305 |
| " | AC-A |
| " | RR-A |
| " | SD 24-30 |
| " | 105-A-B-C-D |

PLAN
Profile (Vertical) 1" = 100 Ft.
Profile (Horizontal) 1" = 100 Ft.
Cross Sections 1" = 5 Ft.



FOR ANY QUESTIONS PLEASE CONTACT ODOT DISTRICT 2 REAL ESTATE AT 419-353-8131

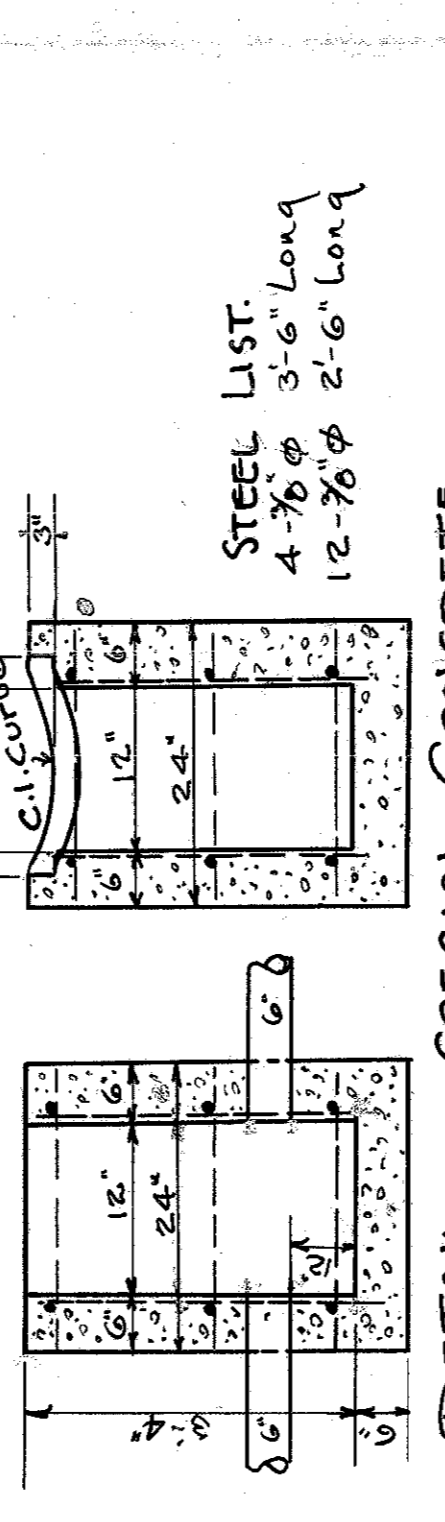
S.H.I.C.H 485
SECTION H
SENECA COUNTY
BLOOMVILLE SECTION



PROPOSED 6" DRAIN TILE UNDER CONCRETE GUTTER DRAINS

| FROM STA. | TO STA. | 386 LIN. FT. | 2 No. |
|-----------|---------|--------------|-------|
| 14+46 | 14+46 | 386 | 2 No. |
| 14+46 | 14+46 | 386 | 2 No. |
| 14+46 | 14+46 | 386 | 2 No. |
| 14+46 | 14+46 | 386 | 2 No. |
| 14+46 | 14+46 | 386 | 2 No. |
| 14+46 | 14+46 | 386 | 2 No. |

PROPOSED 8" U.S.P. FOR CONNECTIONS



DETAIL OF SPECIAL CONCRETE CATCH BASINS WITH CURVED TOP. NOT TO SCALE.

B.M. Sta. 18+98
Top of Conc. Fence Post
on Left
Elev. 912.40

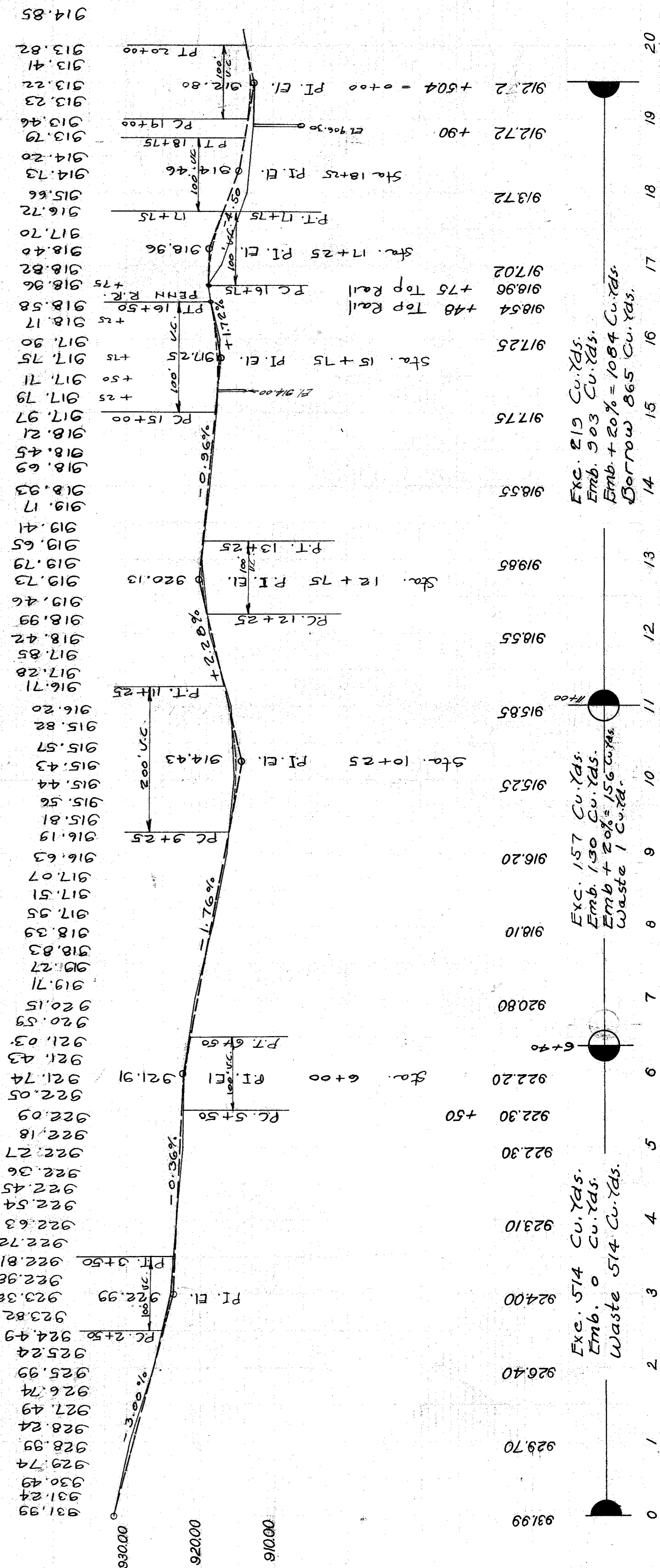
B.M. Sta. 17+63=0-176
R.R. spike in T.P.
Elev. 914.08

B.M. Sta. 6+15
NE Corner, Top of low-
est stone step of Church
Elev. 923.84

B.M. Sta. 0+58
Cross in NE Cor. of
Concrete Walk on Left
Elev. 931.24

Government B.M.
Bloomville Twp. Hall
Elev. 933.37

NOTE: The Grade line shown is Crown of Siminished Pavement.

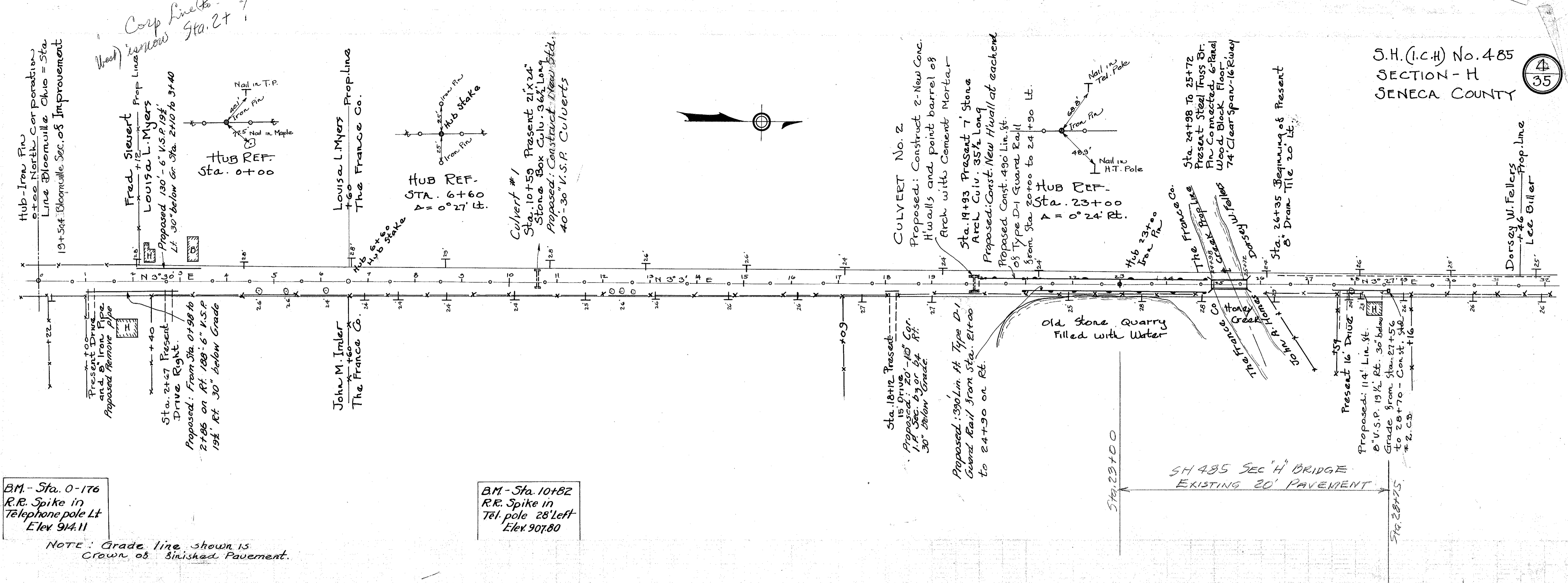


Exc. 219 Cu. Yds.
Emb. 903 Cu. Yds.
Emb + 20% = 1084 Cu. Yds.
Borrow 865 Cu. Yds.

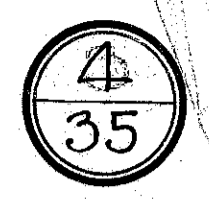
Exc. 157 Cu. Yds.
Emb. 190 Cu. Yds.
Emb + 20% = 156 Cu. Yds.
Waste 1 Cu. Yd.

Exc. 574 Cu. Yds.
Emb. 0 Cu. Yds.
Waste 574 Cu. Yds.

FOR ANY QUESTIONS PLEASE CONTACT ODOT DISTRICT 2 REAL ESTATE AT 419-363-8131



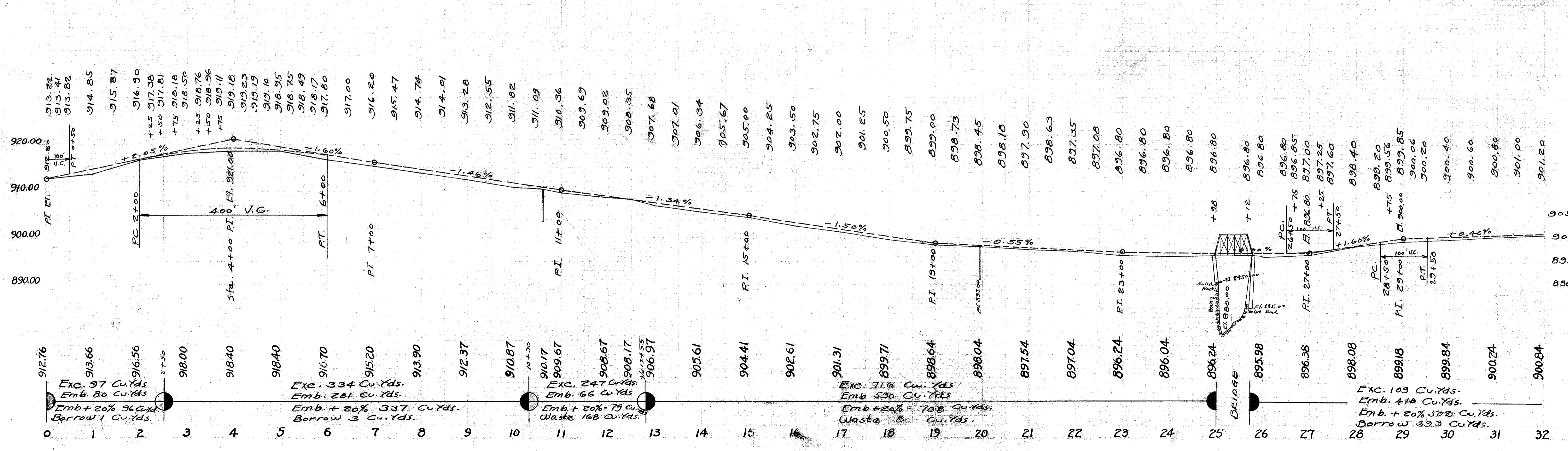
S.H. (I.C.H) No. 485
SECTION - H
SENECA COUNTY



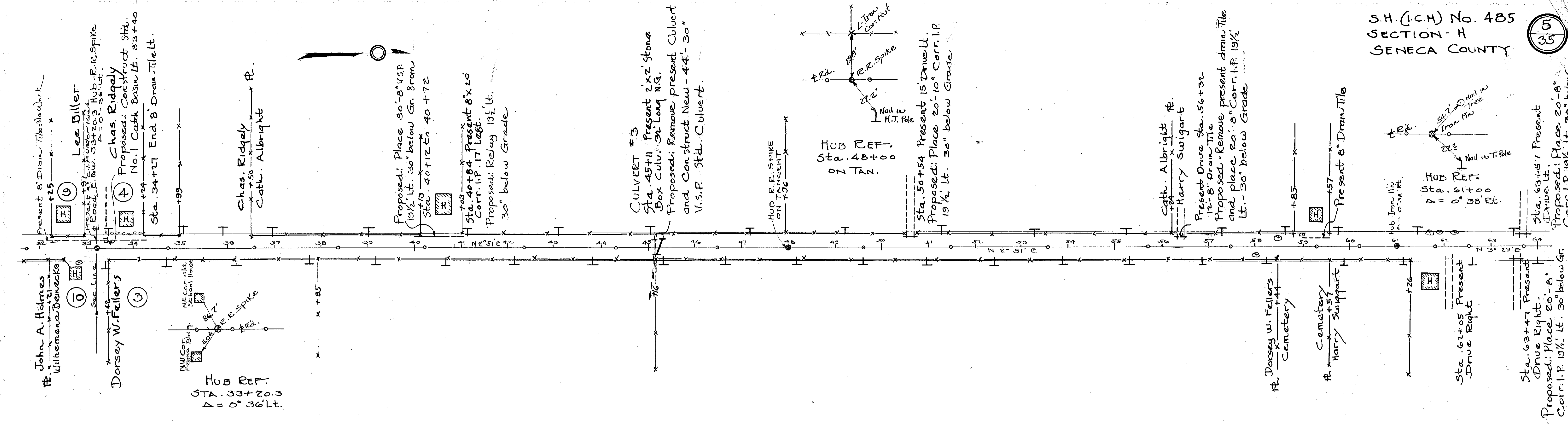
BM - Sta. 0-176
R.R. Spike in
Telephone pole Lt
Elev 914.11

BM - Sta. 10+62
R.R. Spike in
Tel. pole 28' left
Elev 907.80

NOTE: Grade line shown is
Crown of finished Pavement.



FOR ANY QUESTIONS PLEASE CONTACT ODOT DISTRICT 2 REAL ESTATE AT 419-363-8131



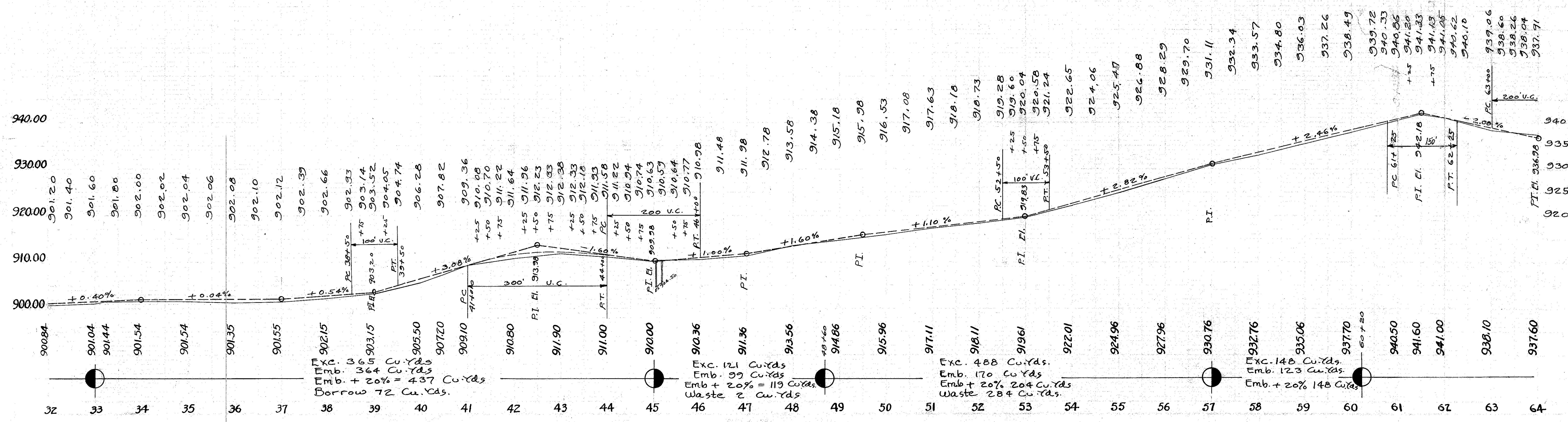
B.M. - Sta. 32+45
S.E. Cor door sill
Sch. House Dist #2
Elev. 903.71

B.M. - Sta. 34+72
R.R. Spike in
pole Right
Elev. 901.36

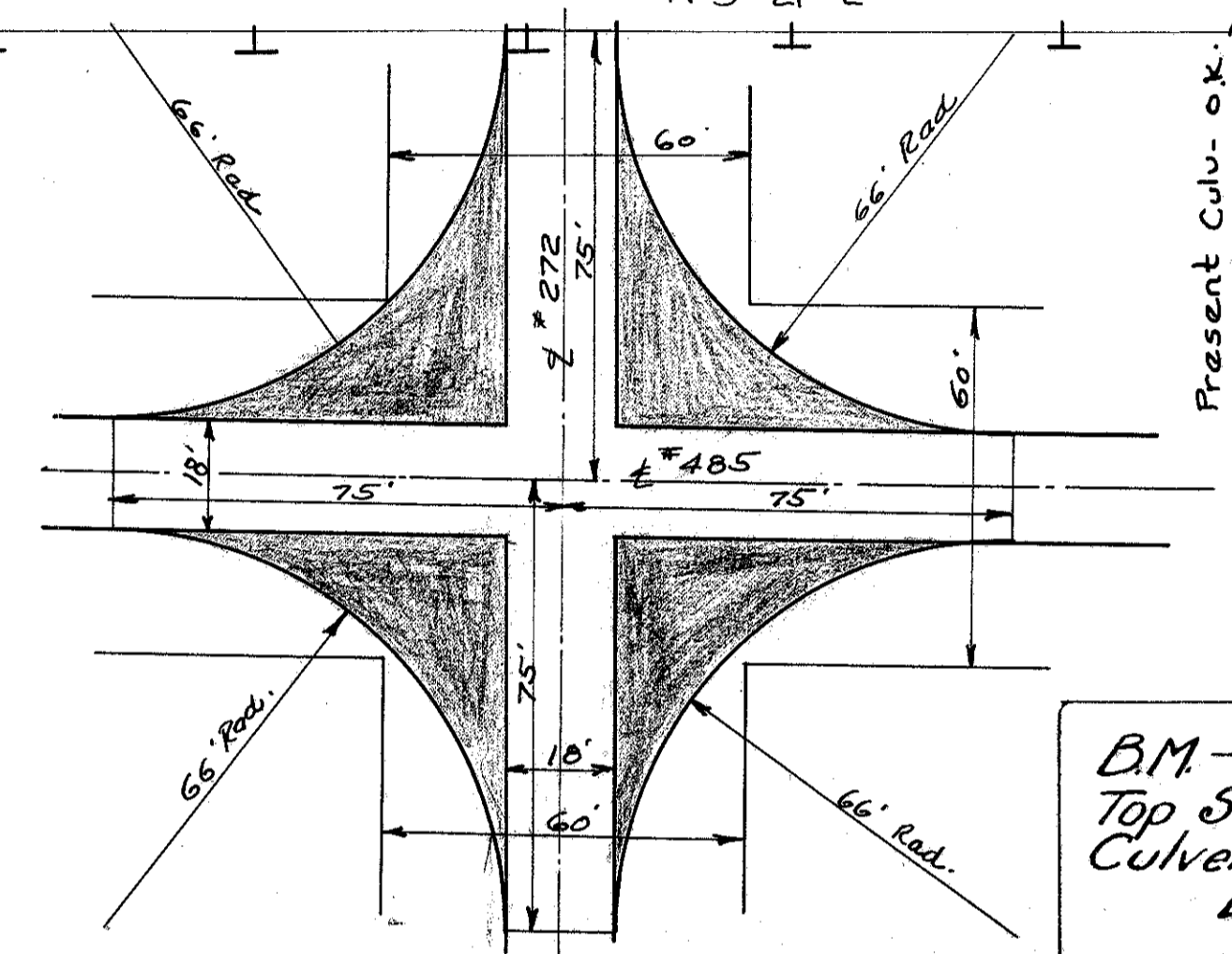
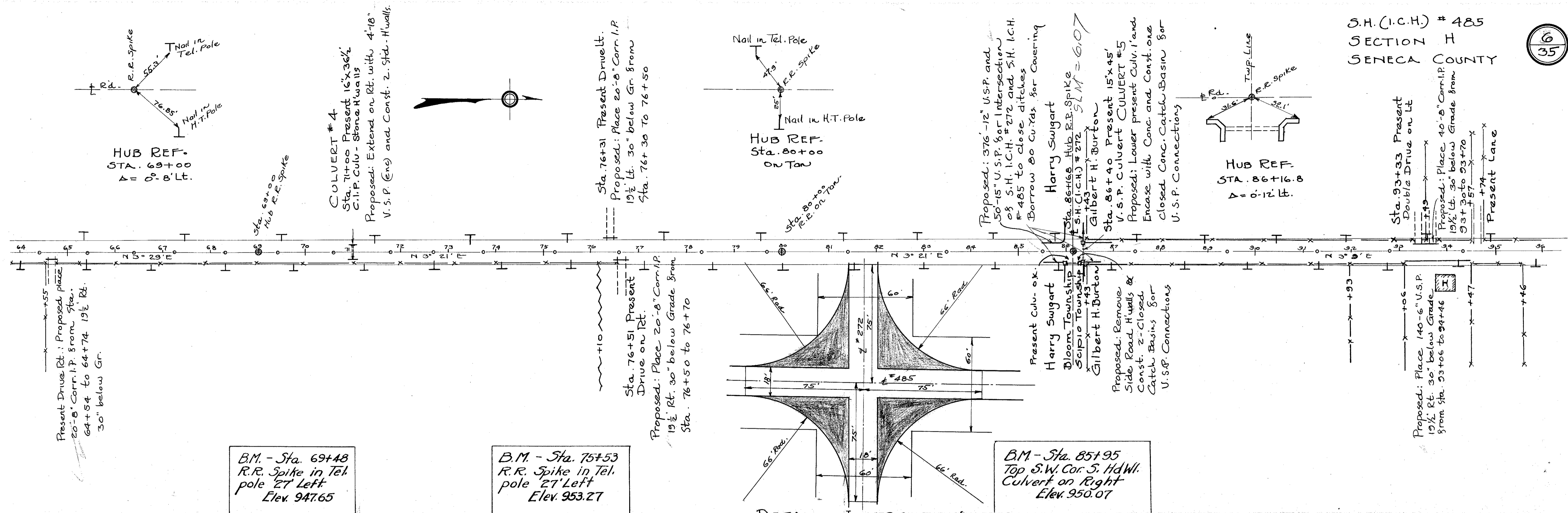
B.M. - Sta. 41+03
R.R. Spike in Walnut
30' Left
Elev. 912.04

B.M. - Sta. 59+44
R.R. Spike in
Maple - 26' Left
Elev. 937.89

NOTE: Grade line shown is
crown of finished pavement.



FOR ANY QUESTIONS PLEASE CONTACT ODOT DISTRICT 2 REAL ESTATE AT 419-363-8131

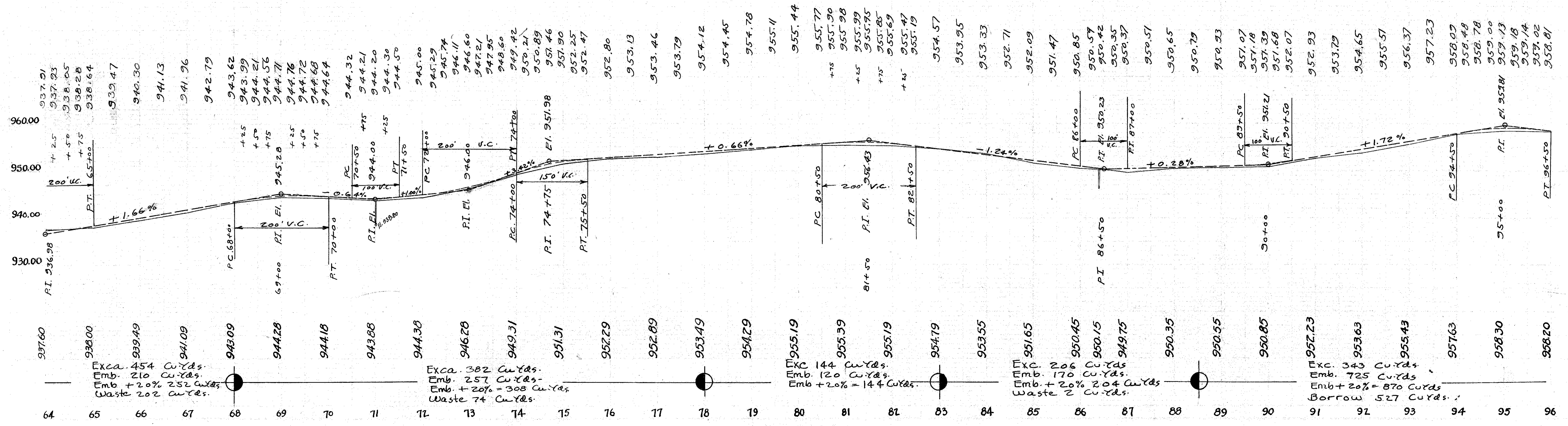


NOTE: Grade Line Shown is Crown of finished Pavement.

B.M. - Sta. 69+48
R.R. Spike in Tel. pole 27' Left
Elev. 947.65

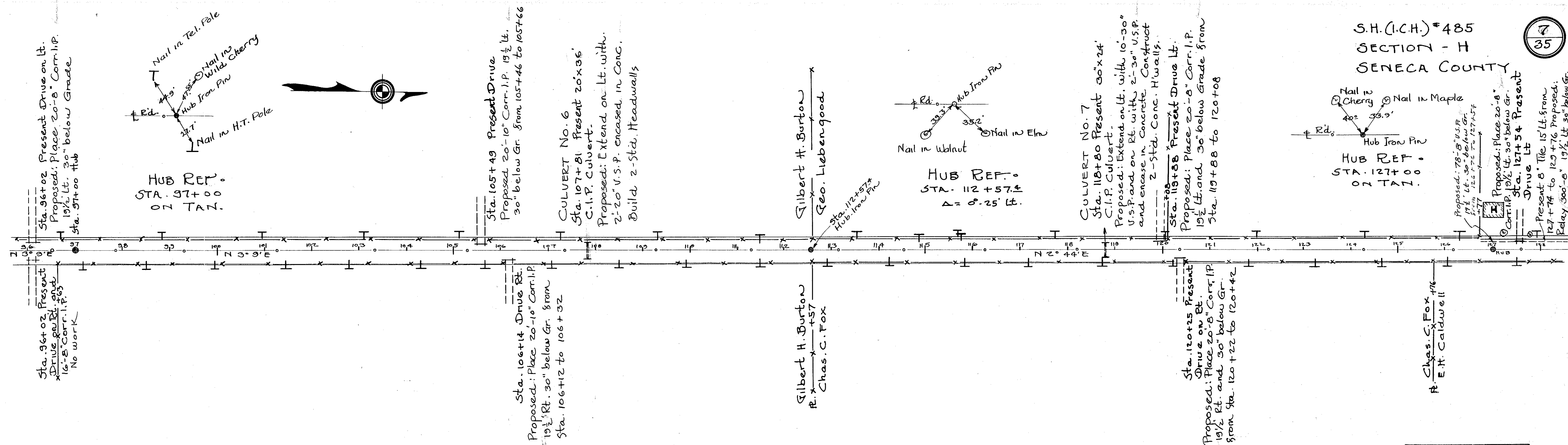
B.M. - Sta. 75+53
R.R. Spike in Tel. pole 27' Left
Elev. 953.27

B.M. - Sta. 85+95
Top S.W. Cor. S. HdWl.
Culvert on Right
Elev. 950.07



FOR ANY QUESTIONS PLEASE CONTACT ODOT DISTRICT 2 REAL ESTATE AT 419-353-8131

S.H. (I.C.H.) #485
SECTION - H
SENECA COUNTY

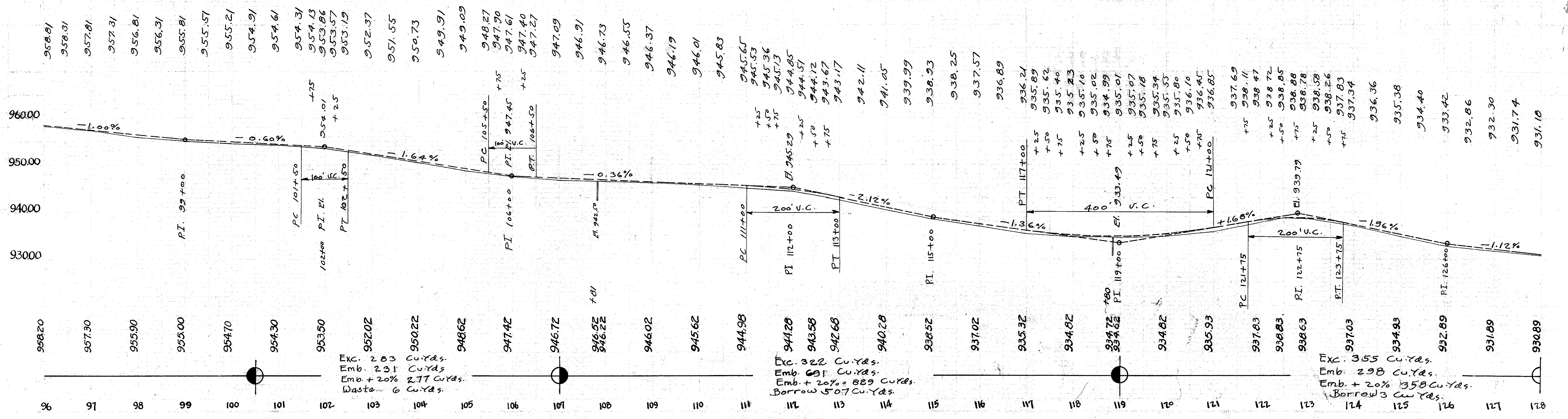


BM- Sta. 99+77
R.R. Spike in
Oak 75' Right
Elev. 955.03

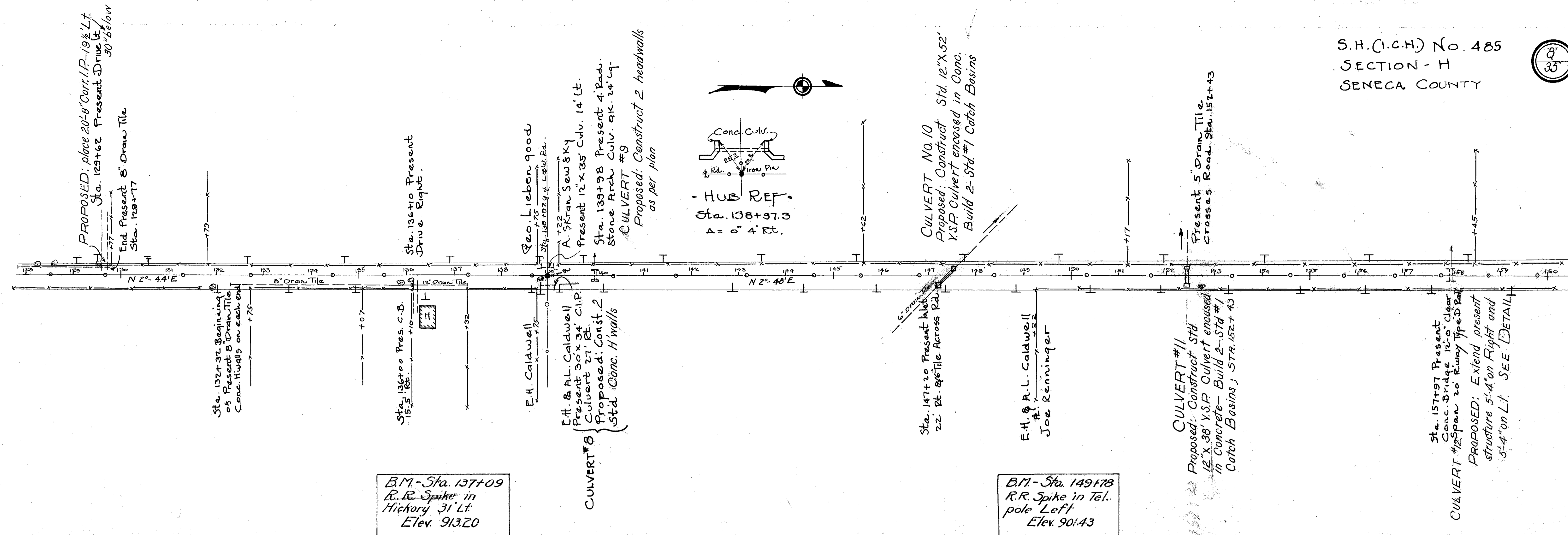
BM- Sta. 112+37
Spike in Walnut
75' Right
Elev. 945.52

BM- Sta. 126+30
R.R. Spike in Tel.
pole 29' Left
Elev. 933.71

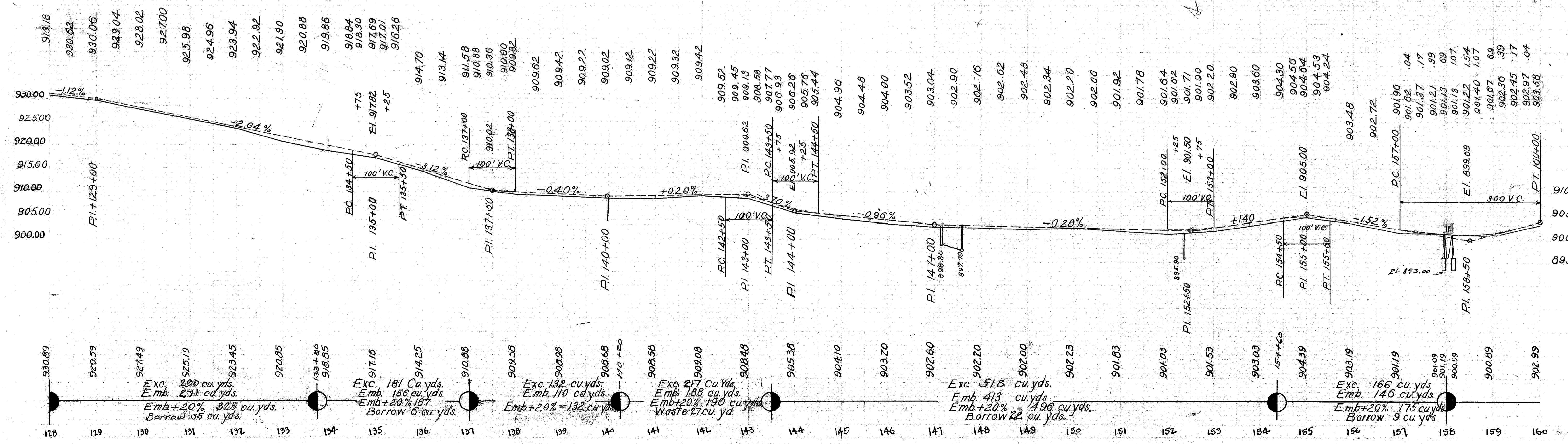
NOTE: Grade Line Shown is Crown
of finished Pavement



FOR ANY QUESTIONS PLEASE CONTACT ODOT DISTRICT 2 REAL ESTATE AT 419-363-8131

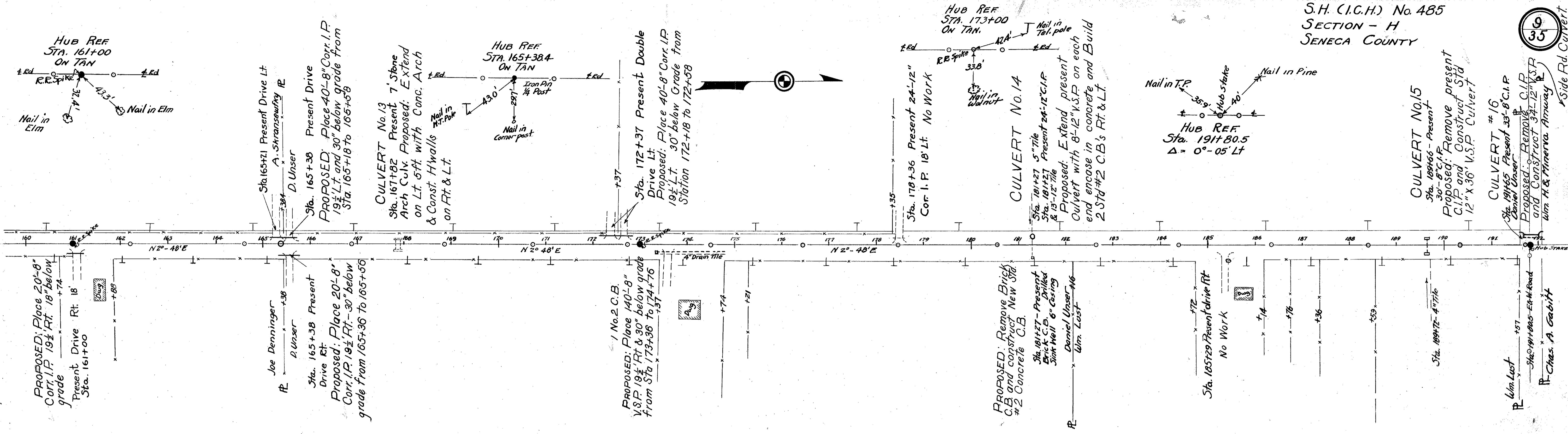
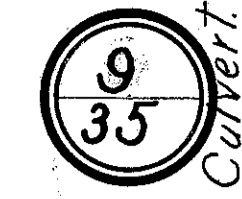


NOTE: Grade line shown is crown of finished pavement



FOR ANY QUESTIONS PLEASE CONTACT ODOT DISTRICT 2 REAL ESTATE AT 419-363-8131

S.H. (I.G.H.) No. 485
SECTION - H
SENECA COUNTY

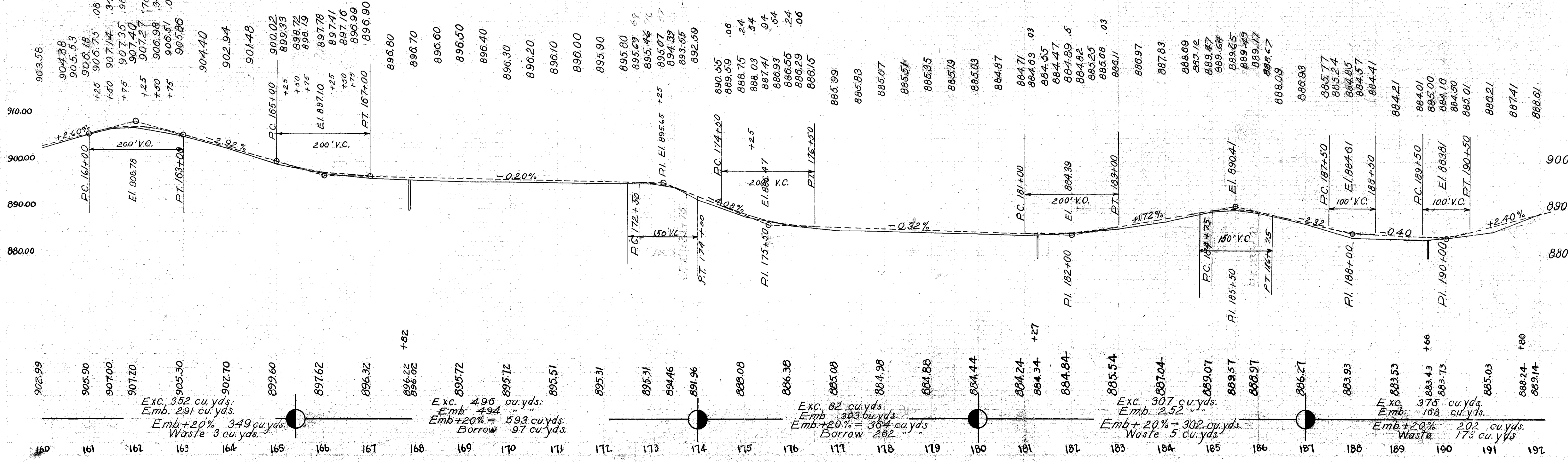


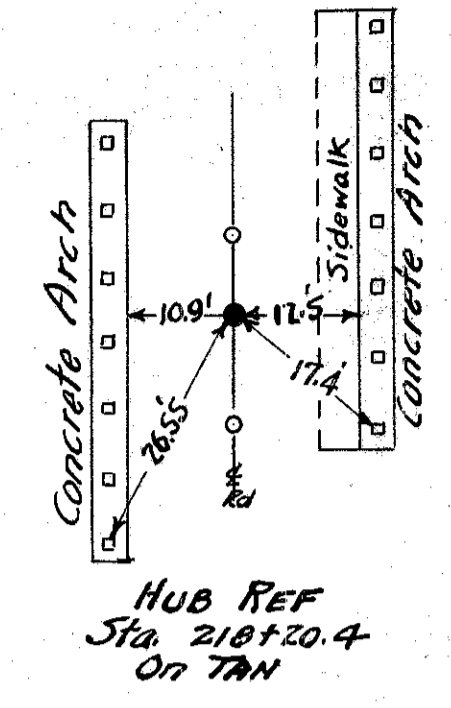
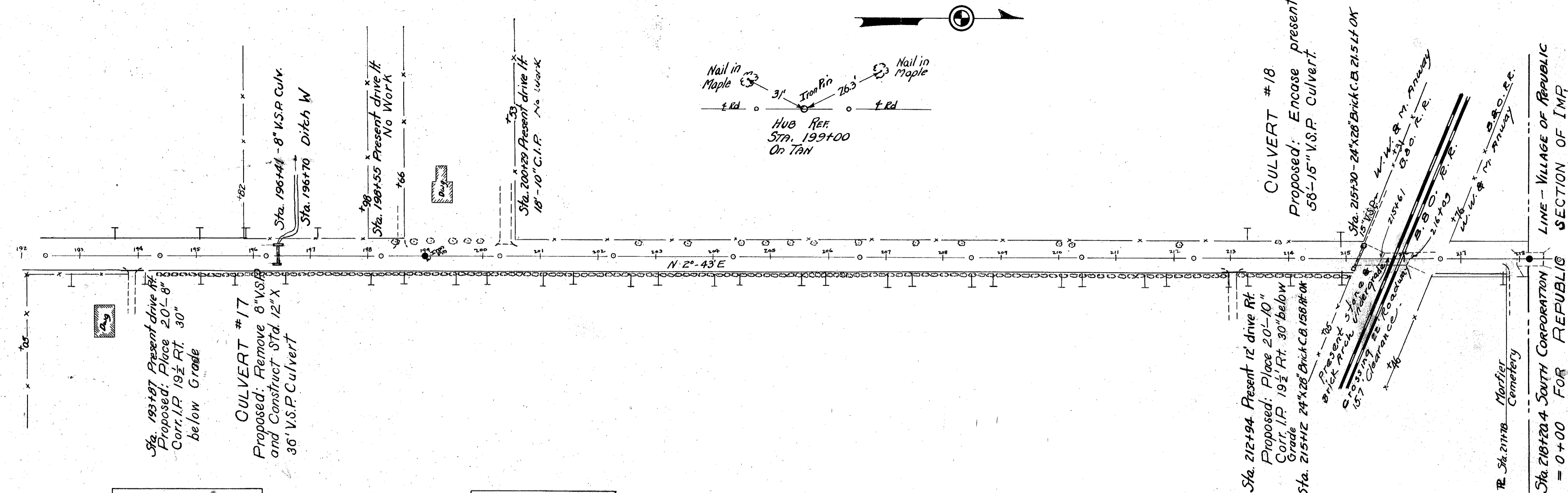
B.M. - Sta. 161+71
R.R. Spike in Elm
36' Right
Elev. 910.30

B.M. - Sta. 173+33
R.R. Spike in Tel.
pole 29' Lt.
Elev. 897.14

B.M. - Sta. 185+52
R.R. Spike in Ash
33' Right
Elev. 891.51

NOTE: Grade line shown is Crown
0.5' finished Pavement



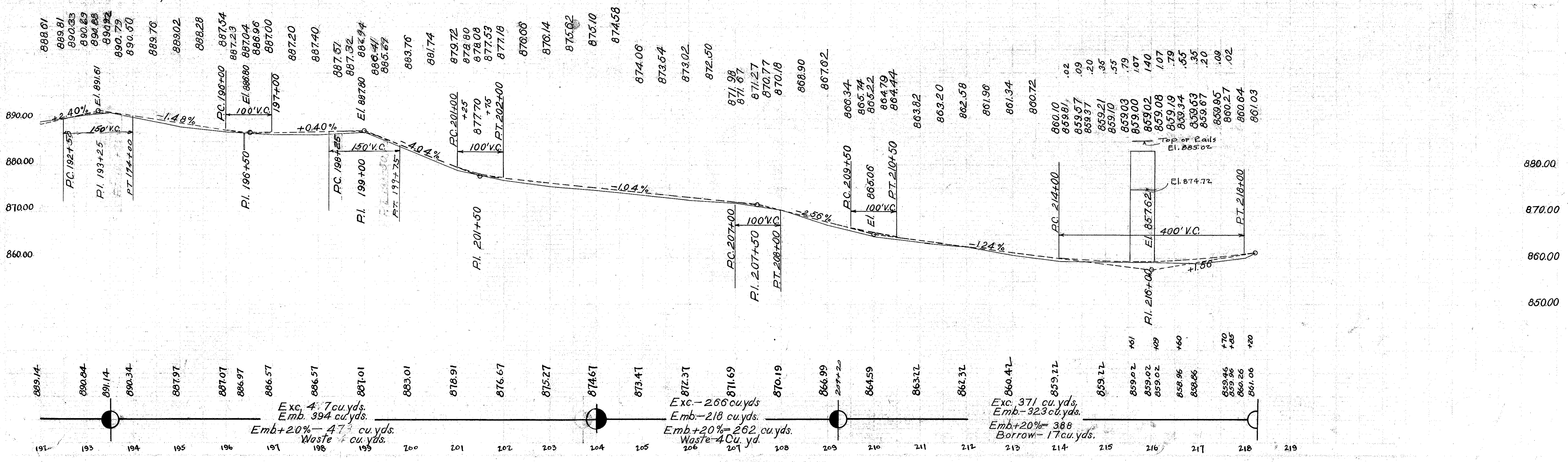


B.M. - Sta. 195+09
R.R. Spike in Tel.
pole 29' Lt.
Elev. 889.13

B.M. - Sta. 201+06
R.R. Spike in
Walnut 30' Lt.
Elev. 880.72

B.M. - Sta. 215+09
Top S.W. Cor. lower
course stone B&O
undergrade crossing Br
9.3' Rt. Elev. 861.02

NOTE: Grade Line Shown is Crown
of finished pavement



FOR ANY QUESTIONS PLEASE CONTACT ODOT DISTRICT 2 REAL ESTATE AT 419-363-8131