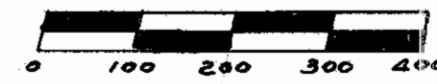


LOCATION PLAN  
SEN-19-14.07  
BUCYRUS - CLYDE ROAD  
1951

DEPARTMENT OF HIGHWAYS - STATE OF OHIO

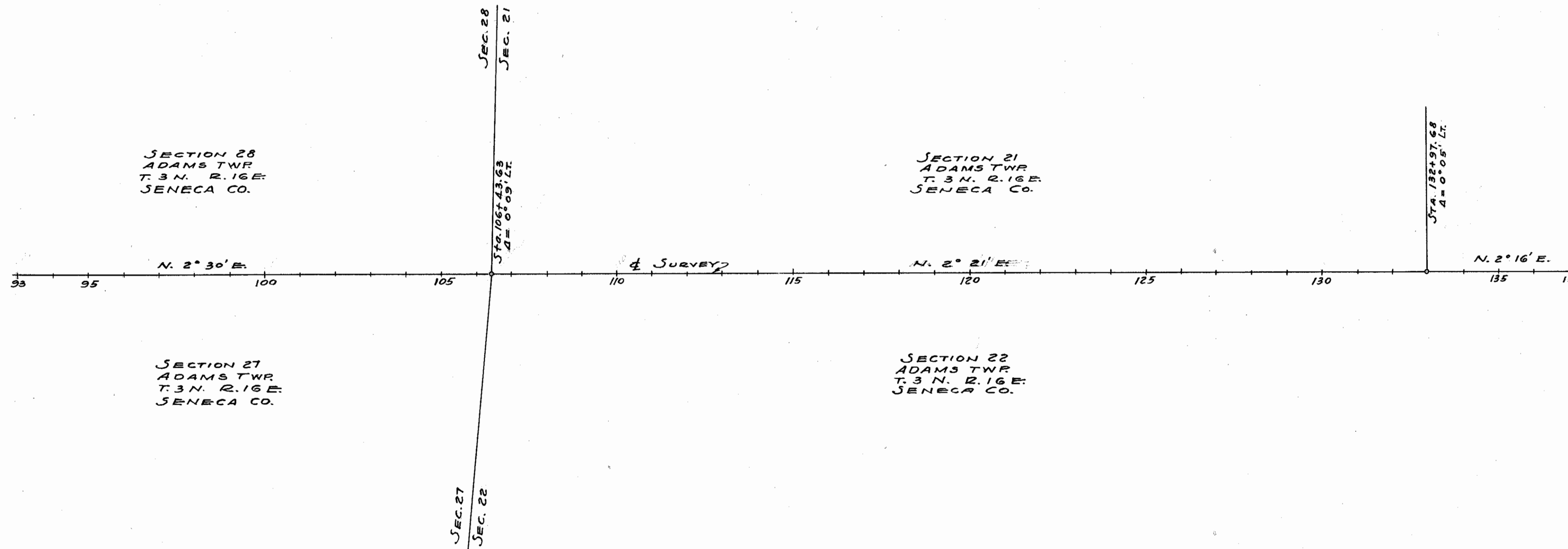
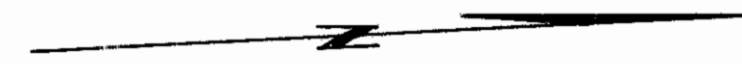


I hereby certify this to be a true and correct platting  
of the center line of survey as determined by the  
Ohio Department of Highways.

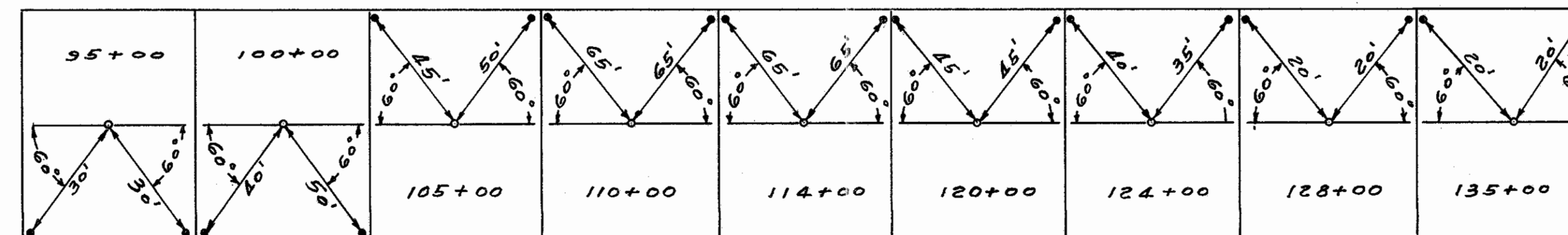
July 17, 1951  
Date

George M. Peber  
Division Deputy Director

RECORDED IN: PLAT BOOK 3  
PAGE 50



CENTER LINE REFERENCE MONUMENTS WILL BE SET BEFORE OR AFTER CONSTRUCTION



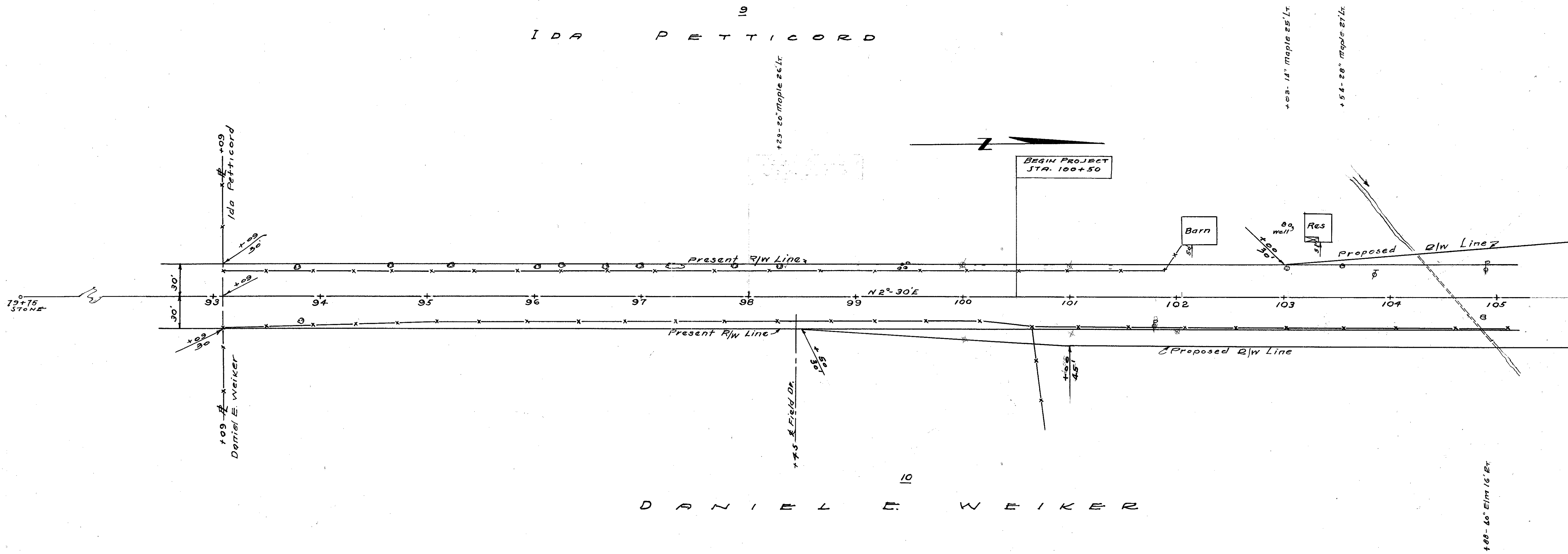
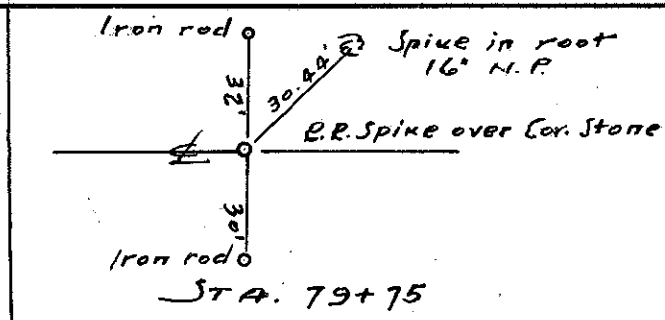
R6019 45 638

SEC. 28 ADAMS TWP. T3N R16E

Telephone Poles- North Western Telephone Co.  
122 So. ELIZABETH ST., Lima, Ohio  
Power Poles- North Central Electric  
Co-operative, ATTICA, Ohio

SENECA COUNTY  
SEN-19-11.07  
R/W PLANS

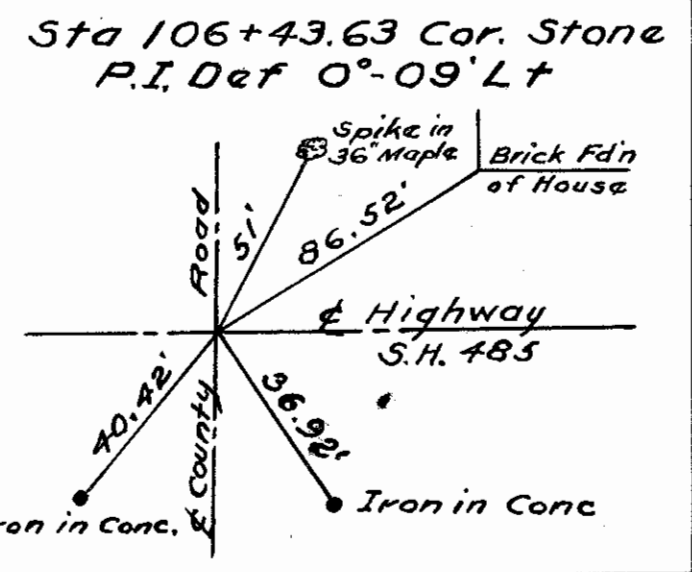
DATE 3-19-51 DRAWN BY E.P. + J.S.  
REVISED 6/11/51  
LENGTH OF PROJECT 0.473 MILES



IDA PETTICORD

DANIEL E. WEIKER

SEC 27 ADAMS TWP. T3N. R.16E.



9  
IDA PETTICORD

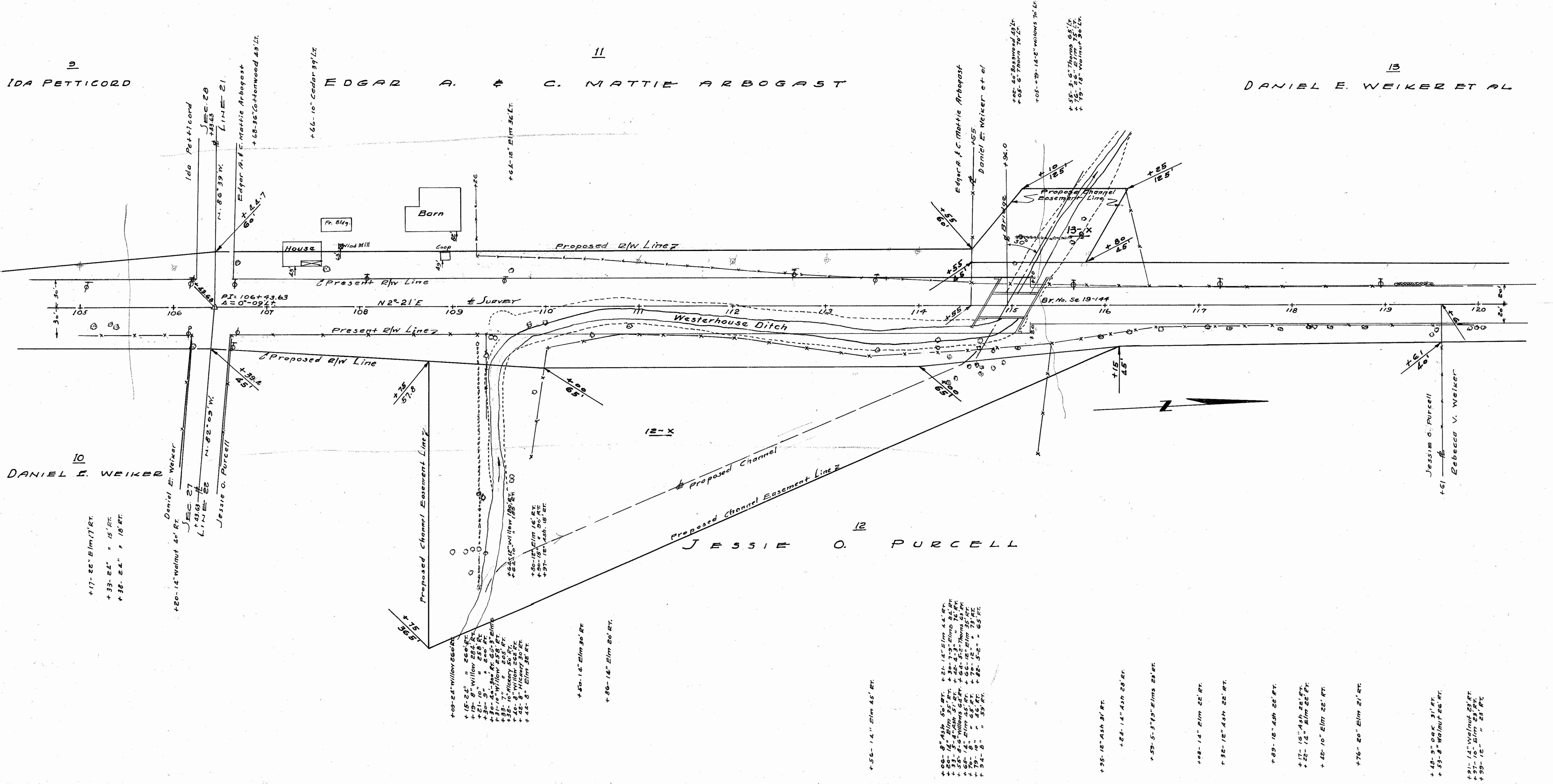
EDGAR A. C. MATTIE ARBOGAST

13  
DANIEL E. WEIKER ET AL

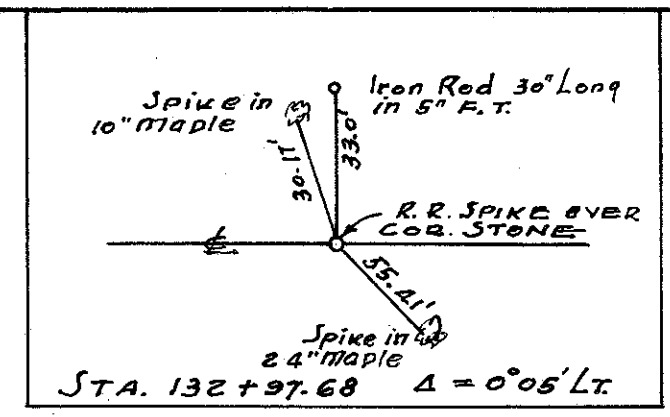
10  
DANIEL E. WEIKER

JESSIE O. PURCELL

Jessie O. Purcell  
Rebecca V. Weiker



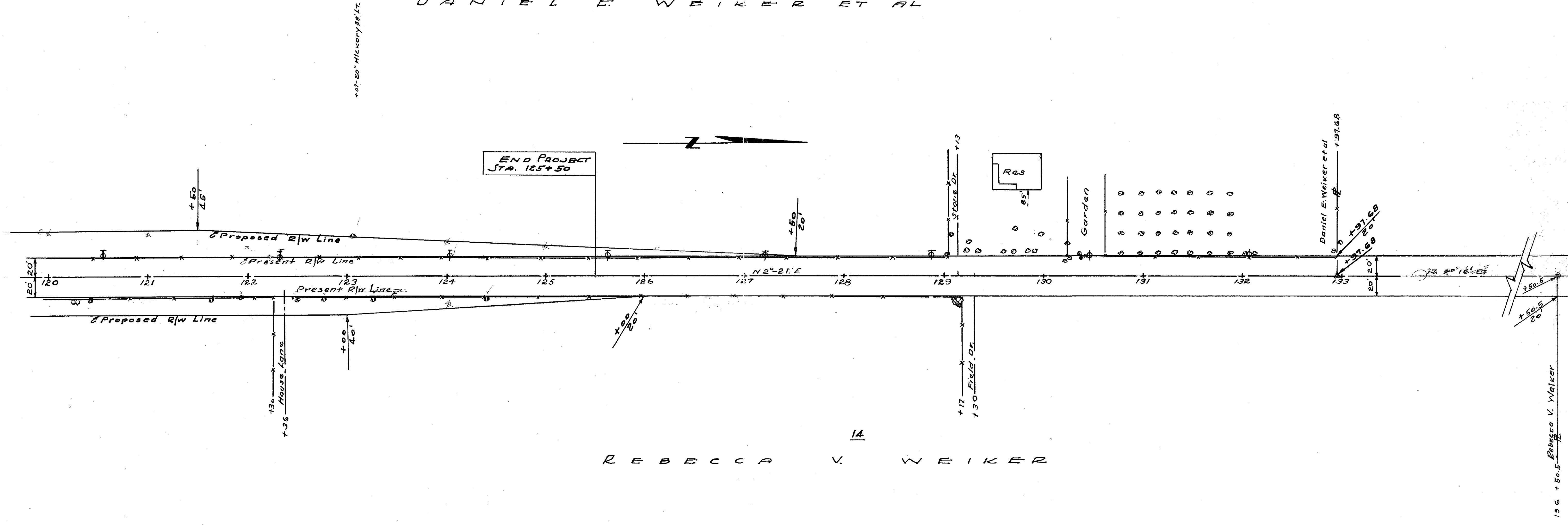
SEC 21 ADAMS TWP T3N. R16E.



SENECA COUNTY  
SEN-19-14.07  
R/W PLANS

DATE 3-19-51 DRAWN BY R.R. & J.S.  
REVISED 6/1/51  
LENGTH OF PROJECT 0.413 MILES

DANIEL E. WEIKER ET AL



REBECCA V. WEIKER

- +55-9" Elm 23' RT.
- +58-10" Walnut 23' RT.
- +44-26" Elm 22' RT.
- +64-20" Elm 23' RT.
- +95-16" W. Cherry 22' RT.
- +50-15" Oak 21' RT.
- +75-8" TW Hickory 21' RT.
- +27-14" Elm 20' RT.
- +40-16" Elm 20' RT.

SEC 22 ADAMS TWP T3N. R16E.

R.W. 402-18120