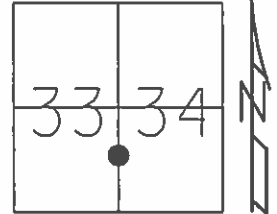


O.D.O.T. DISTRICT 2 SURVEY OFFICE (USE ONLY)

PERSONNEL _____ REFERENCE NO. 2 SHEET 3 OF 64
 NOTES RHOADES DATE 08-17-2015 ROUTE SR 19
 H.C. O'DONNELL WEATHER RAIN COUNTY SENECA
 R.C. HOMAN TEMP. 68°F TOWNSHIP BLOOM
 SECTION 33 & 34
 T 1 N R 16 E

TYPE MONUMENT PK & WASHER
 ON SURFACE - ~~BELOW~~ ON
~~LEFT - C~~ PAV'T - ~~RIGHT~~ ON
10' TO LT EDGE PAVEMENT
 S.L.M. 11+99.95



Grid: Northing: 485089.9837 Easting: 1826004.3791

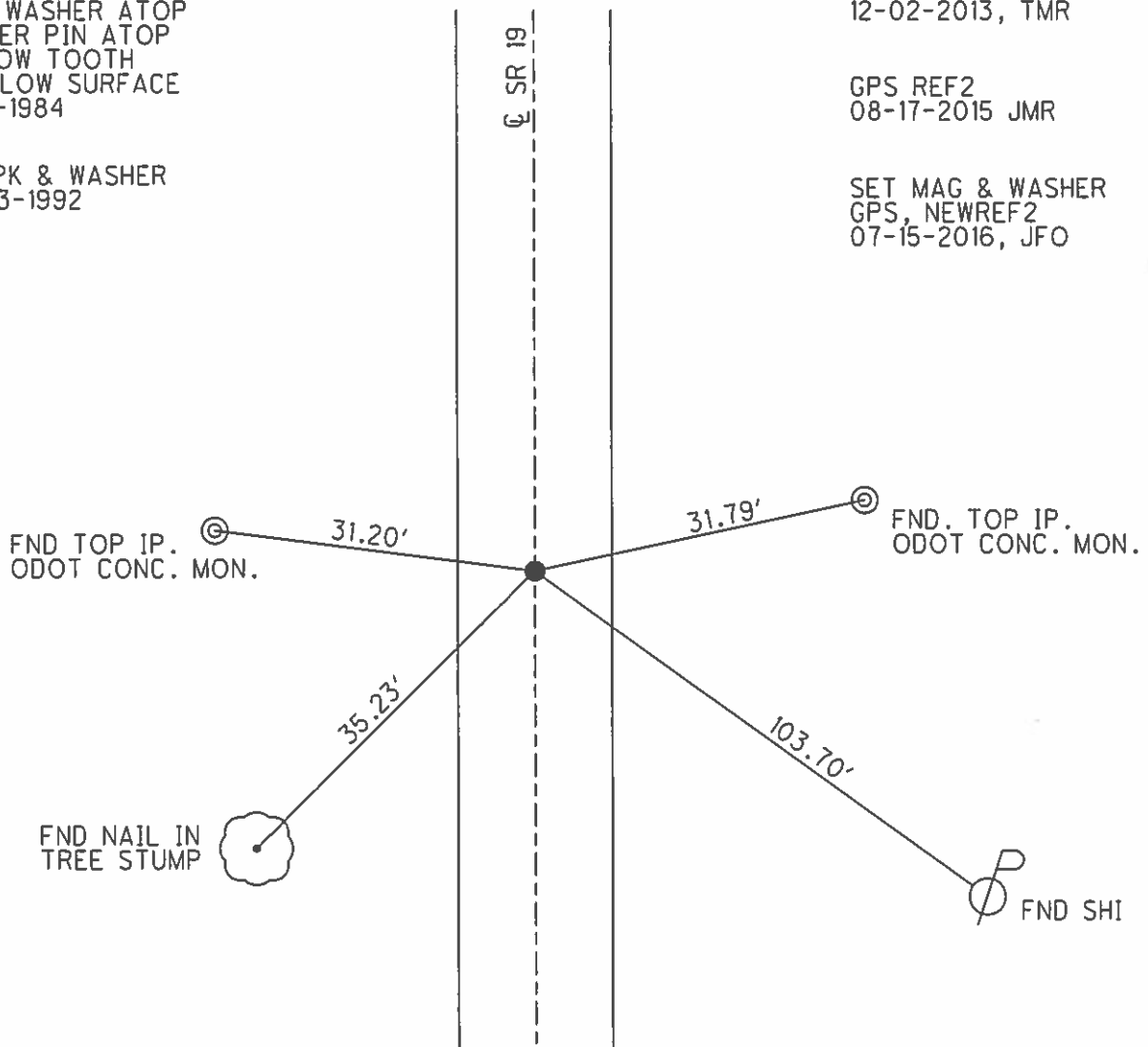
RECORD P.O.T.
 PK & WASHER ATOP
 COPPER PIN ATOP
 HARROW TOOTH
 8" BELOW SURFACE
 01-12-1984

GPS REF2
 12-02-2013, TMR

SET PK & WASHER
 09-03-1992

GPS REF2
 08-17-2015 JMR

SET MAG & WASHER
 GPS, NEWREF2
 07-15-2016, JFO



O.D.O.T. DISTRICT 2 SURVEY OFFICE (USE ONLY)

PERSONNEL _____

REFERENCE NO. 02

SHEET 3 OF 62

NOTES CANTERBURY

DATE 04-11-06

ROUTE SR 19

H.C. CANTERBURY

WEATHER FAIR

COUNTY SENECA

R.C. MICKLOVICK

TEMP. +55°

TOWNSHIP BLOOM

SECTION 33 & 34

T 1 N R 16 E

TYPE MONUMENT FD. PK./WASHER

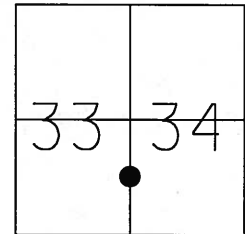
ON SURFACE - ~~BELOW~~ ON SURFACE

~~LEFT~~ - C PAV'T - ~~RIGHT~~ ON CL.

10' TO LT. EDGE PAVEMENT

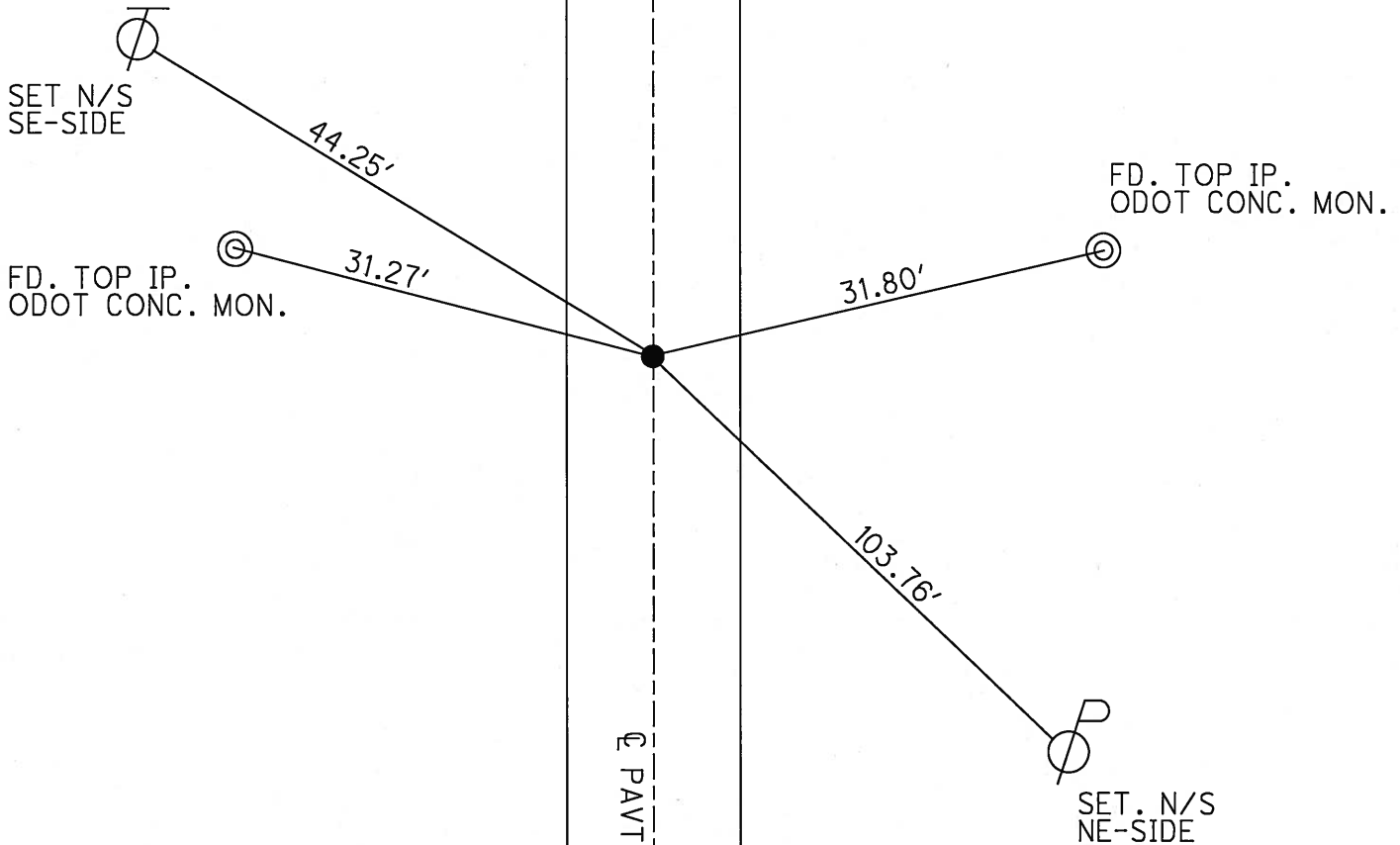
S.L.M. 12+01 (SV3)

Grid: Northing: _____ Easting: _____



RECORD P.O.T.
PK/WASHER ATOP
COPPER PIN ATOP
HARROW TOOTH
8" BELOW SURFACE
01-12-84

SET PK/WASHER
09-03-92 RCC



O.D.O.T. DISTRICT 2 SURVEY OFFICE

PERSONNEL

REFERENCE NO. 2

SHEET 2 OF 53

NOTES CHENEY

H.C. RIFFLE

R.C. BARBOUR

GEYMAN

DATE 9-3-1992

WEATHER MOSTLY CLOUDY

TEMP. 70°

ROUTE #19

COUNTY SENECA

TOWNSHIP BLOOM

SECTION 33 & 34

T. 1 N. R. 16 E.

TYPE MONUMENT PK/WASHER

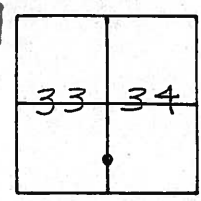
ON SURFACE - ~~BELOW~~ YES

~~LEFT - & PAV'T. - RIGHT~~ ON

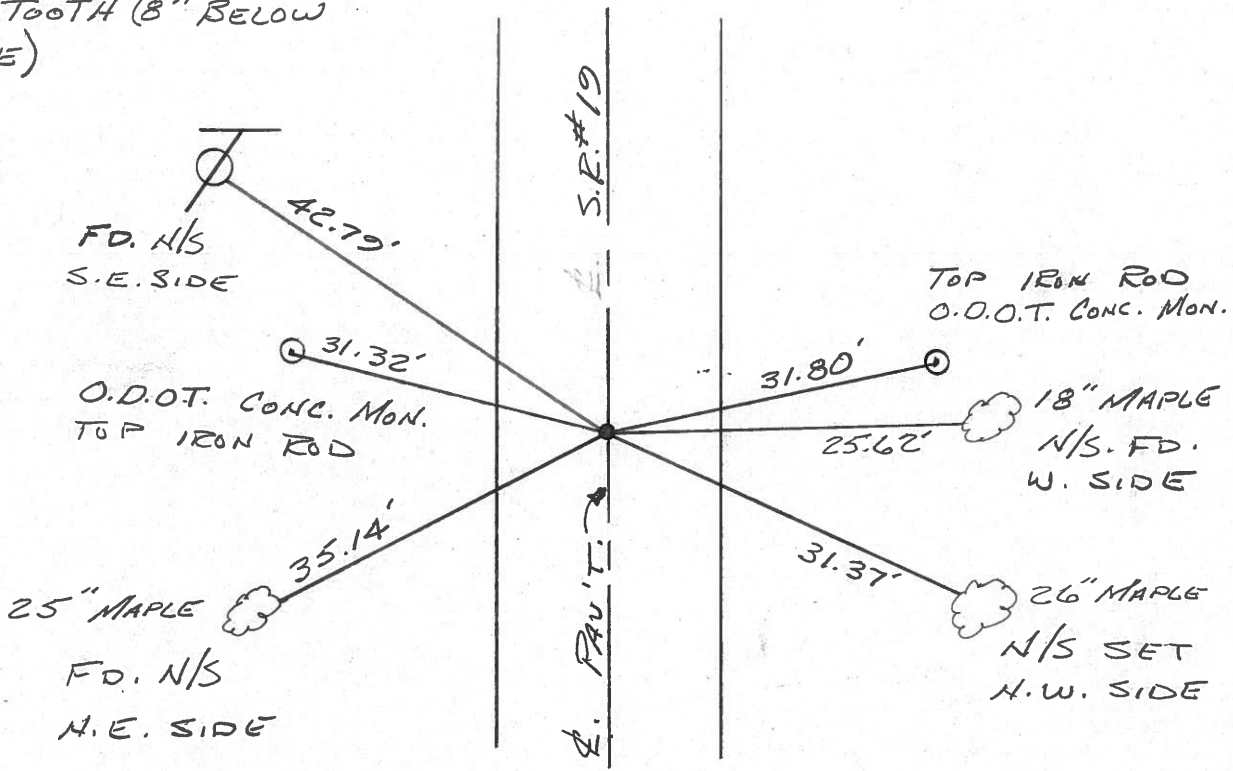
10.0 TO LT. EDGE PAVEMENT

S.L.M. 12+16

SET PK/WASH.
 9-3-1992
 RCC



RECORD: 1112184
 P.O.T.
 STA. 12+00 5450 ATOP
 SET
 PK/WASHER ATOP
 COPPER PIN ATOP
 HARROW TOOTH (8" BELOW
 SURFACE)



County Seneca S.R. # 19

Date 1/12/84

Township Bloom

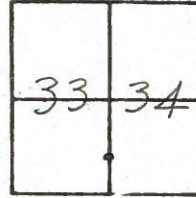
Weather sunny

Section 33 & 34

Temp. 10°

T 1 N, R 6 E

Personnel Cronin



②

Ripple

Geyman

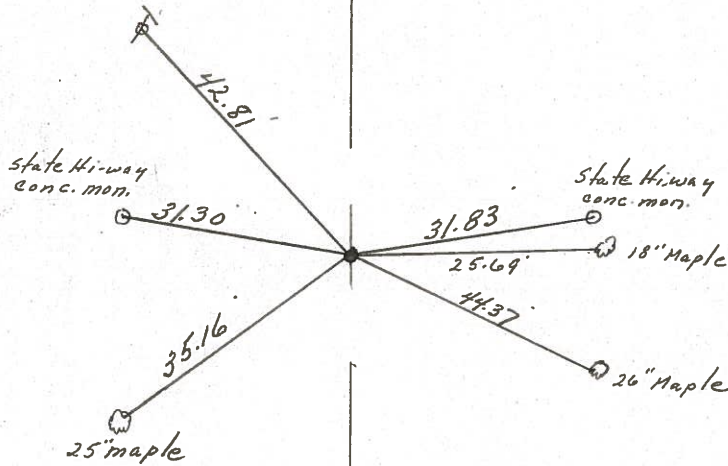
Barbour



P.O.T.

12400

Set P.K. washer atop copper
pin atop barrow tooth (8"
below surface) & Permit.



252198

County SENECA S.R. 19

Date 6/18/79

Township Bloom

Weather sunny

Section E. LINE SEC. 33 E. W. LINE SEC. 34

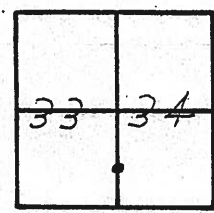
Temp. 65°

T/N, R/E

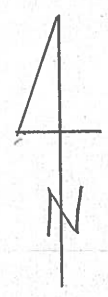
Personnel Cronin

Ripple

Geyman



(2)



12+00
Fd. copper clad pin 1" below
surface. Harrow tooth
6" below

State Highway
Conc. Mon.

31.48'

31.82'

State Highway
Conc. Mon.

35.18'

24" Maple

Sec. 33
Sec. 34

S.R. #197

PERSONNEL TITLE PERSONNEL TITLE

COUNTY Seneca

drawn 1/5/72
DATE 8/18/71

Ash

Cronin

Ripple

Anderson

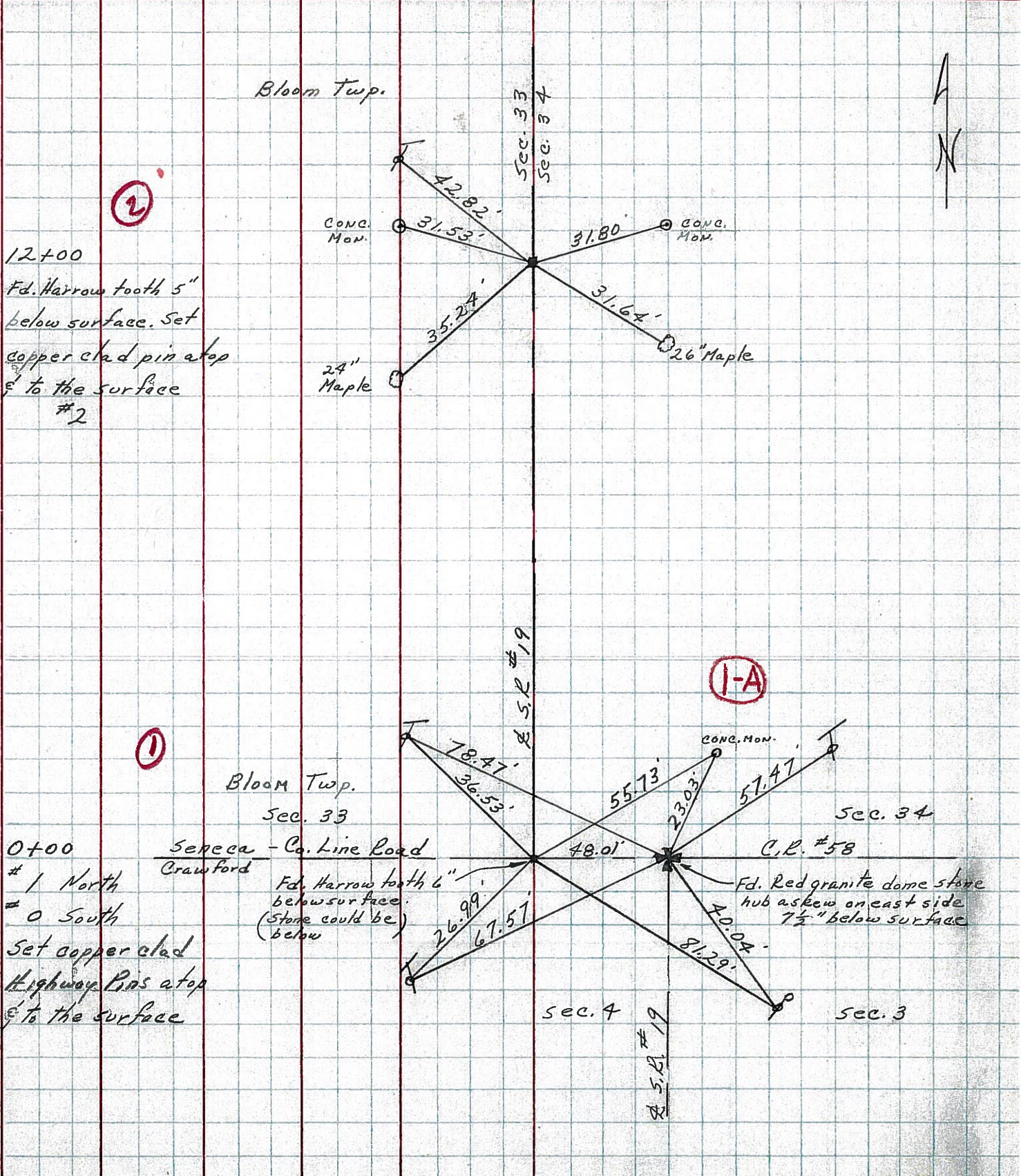
S. R. #19 - I.C.H. #485

WEATHER

SEC. G

TEMP. 72°

DESCRIPTION Ties for Control Points - Sen. - Crawford Co. line to Bloomville
JOB NO. Bloomville



12+00
F.d. Harrow tooth 5"
below surface. Set
copper clad pin atop
& to the surface
#2

0+00
#1 North
#0 South
Set copper clad
Highway Pins atop
& to the surface

Seneca - Co. Line Road
Crawford
F.d. Harrow tooth 6"
below surface.
(Stone could be
below)

1-A

2

1

PERSONNEL	TITLE	PERSONNEL	TITLE	COUNTY	DATE	WEATHER	TEMP.
MOSSER				SENECA	11-18-68	Cloudy	39°
BARBOUR				S. R. # 19			
Redding				SEC. 6			
Potts							

DESCRIPTION Ties for Control Points JOB NO. _____

