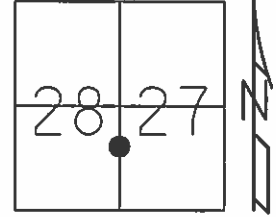


O.D.O.T. DISTRICT 2 SURVEY OFFICE (USE ONLY)

PERSONNEL \_\_\_\_\_ REFERENCE NO. 7 SHEET 9 OF 64  
 NOTES RHOADES DATE 08-17-2015 ROUTE SR 19  
 H.C. O'DONNELL WEATHER PT CLOUDY COUNTY SENECA  
 R.C. HOMAN TEMP. 80°F TOWNSHIP BLOOM  
 \_\_\_\_\_ SECTION 27 & 28  
 \_\_\_\_\_ T 1 N R 16 E

TYPE MONUMENT PK & WASHER  
 ON SURFACE - ~~BELOW~~ ON  
~~LEFT~~ - CL PAV'T - RIGHT 0.4'  
9.6' TO RT EDGE PAVEMENT  
 S.L.M. 67+98.41'



Grid: Northing: 490684.1416 Easting: 1826207.3407

RECORD STA 68+00  
 FND PK & WSHER ATOP  
 BOAT SPK. ATOP  
 HARROW TOOTH  
 6.5" BELOW SURFACE  
 01-12-1984

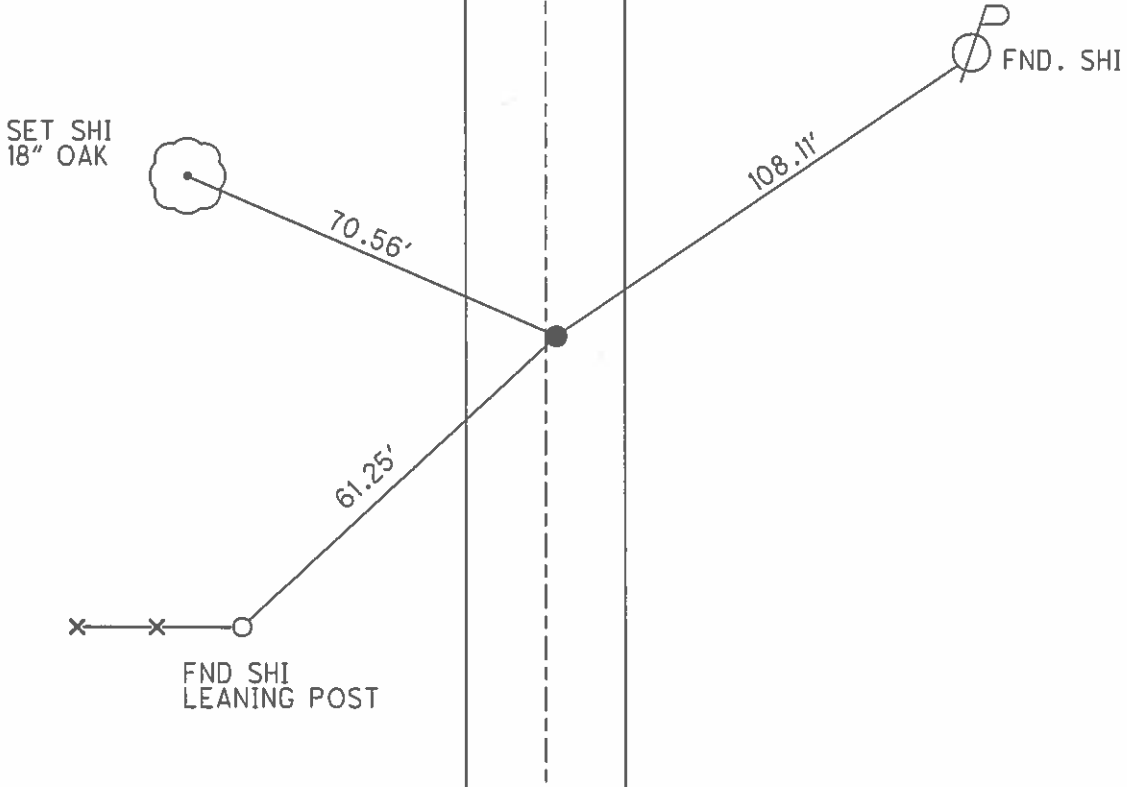
SET PK & WASHER  
 09-03-1992 RCC

FND PK & WASHER  
 12-05-2013 JMR

GPS REF7  
 12-30-13, TMR

GPS REF7  
 08-17-2015, JMR

SET MAG & WASHER  
 GPS, NEWREF7  
 07-15-2016, JFO



O.D.O.T. DISTRICT 2 SURVEY OFFICE (USE ONLY)

PERSONNEL

REFERENCE NO. 07

SHEET 9 OF 62

NOTES CANTERBURY

DATE 04-13-06

ROUTE SR 19

H.C. MICKLOVICK

WEATHER SUNNY

COUNTY SENECA

R.C. HOUESHELL

TEMP. +62°

TOWNSHIP BLOOM

SECTION 27 & 28

T 1 N R 16 E

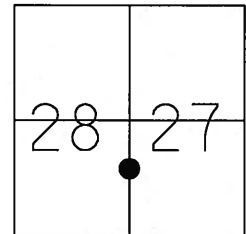
TYPE MONUMENT FD. PK./WASHER

ON SURFACE - ~~BELOW~~ ON SURFACE

~~LEFT - C PAV'T~~ - RIGHT 0.4' RT.

9.6' TO RT. EDGE PAVEMENT

S.L.M. 68+00 (SV9)



Grid: Northing: \_\_\_\_\_ Easting: \_\_\_\_\_

RECORD STA. 68+00  
FD. PK./WASHER ATOP  
BOAT SPK. ATOP  
HARROW TOOTH  
6.5" BELOW SURFACE  
01-12-84

SET PK/WASHER  
09-10-92 RCC

SET N/S  
SE-SIDE  
14" OAK



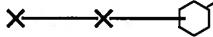
70.75'

SET N/S  
NE-SIDE  
10" ELM



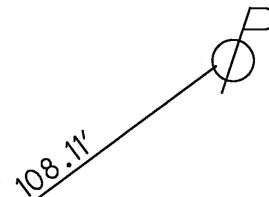
41.07'

61.28'



SET N/S  
NE-SIDE  
WOOD FENCE

SR 19  
C PAVT



SET N/S  
SW-SIDE



# O.D.O.T. DISTRICT 2 SURVEY OFFICE

PERSONNEL

REFERENCE NO. 7

SHEET 8 OF 53

NOTES CHENEY

H.C. SARBOUR

DATE 6-19-1992

ROUTE #19

R.C. GREYMAN

WEATHER SUNNY

COUNTY SENECA

RIPPLE

TEMP. 75°

TOWNSHIP BLOOM

SECTION 27 & 28

T. 1 N. R 16 E

TYPE MONUMENT PK/WASHER

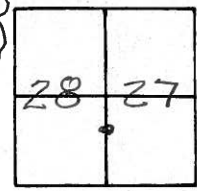
SET PK/WASHER  
9-10-1992  
RCC

ON SURFACE - BELOW YES

~~LEFT~~ & PAV'T. - RIGHT ON

10.0 TO RT. EDGE PAVEMENT

S.L.M. 68+10.5

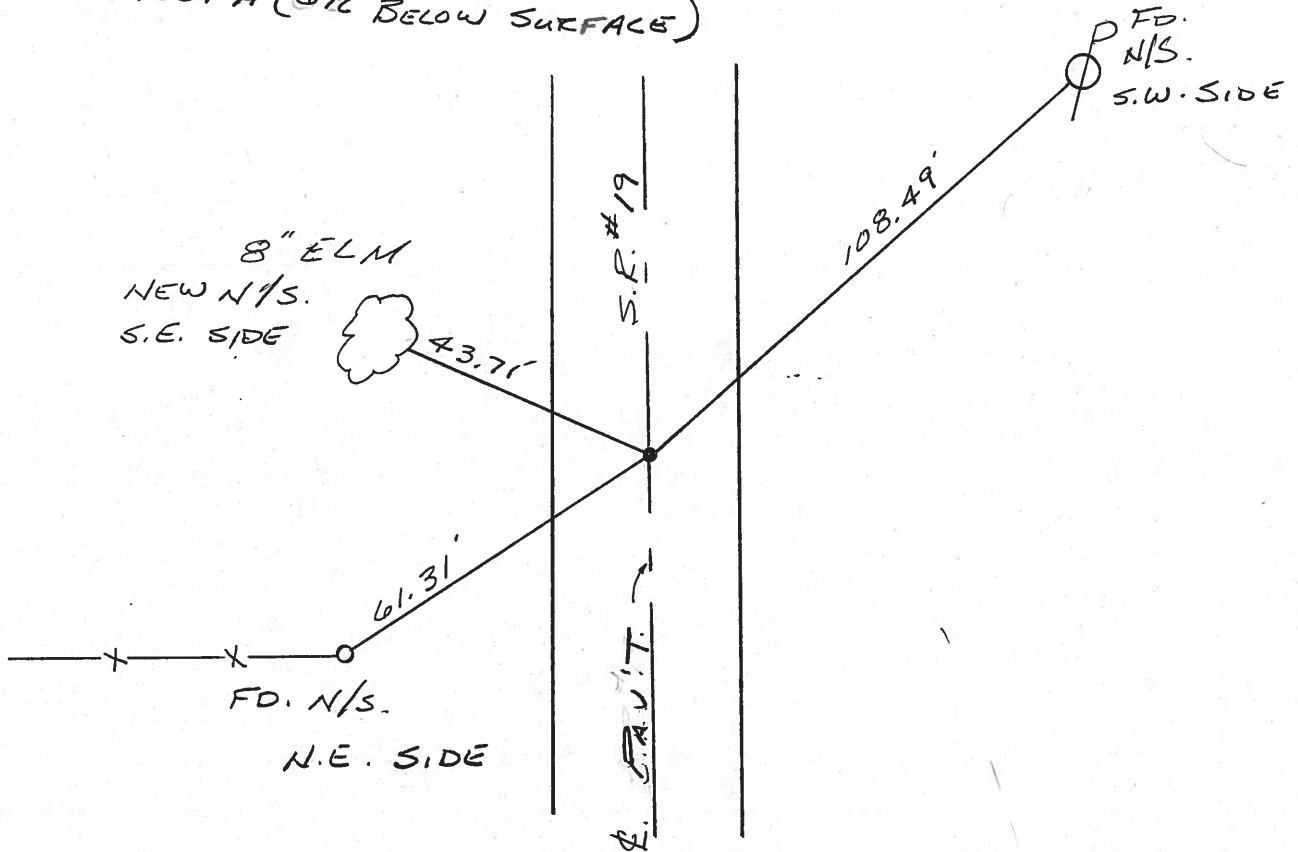


RECORD: 1-13-1984 STA. 68+00

PK/WASHER ATOP

BOAT SPR. ATOP

HARROW TOOTH (6 1/2" BELOW SURFACE)



County Seneca S.R. #19

Date 1/13/84

Township Bloom

Weather overcast

Section 27, 28

Temp. 15°

T/N, R/E

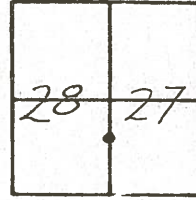
Personnel Cronin

Ripke

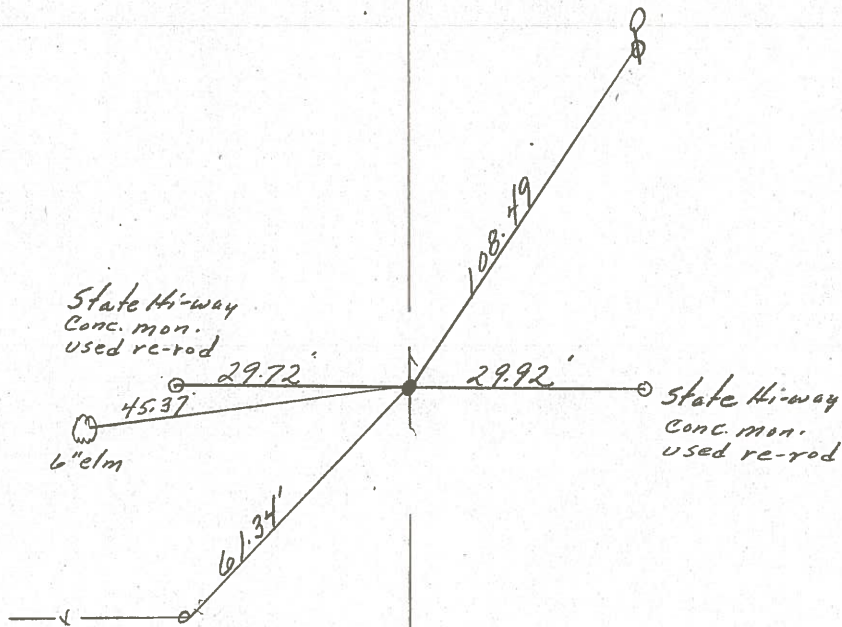
Geyman

Barbour

⑦



68400  
set P.K. & washer atop  
boat spike atop harrow  
tooth (6 1/2" below surface)



S.S.R. #19

County SENECA S.R. 19

Date 7/5/79

Township BLOOM

Weather sunny

Section E. Line 28 & W. Line 27

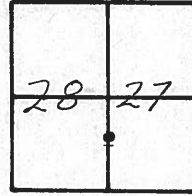
Temp. 67°

T/N, R/E

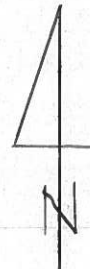
Personnel Cronin

Lippke

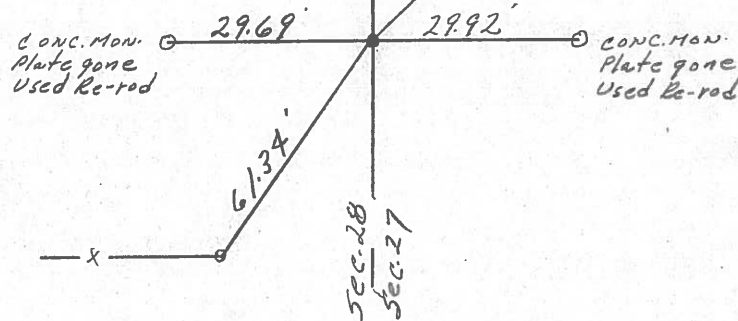
Geyman



7



68+00  
 Ed bolt spike 1" below  
 surface. Harrow tooth  
 below 5 1/2" below surface.



S.S.R. #197

PERSONNEL TITLE PERSONNEL TITLE  
 Ash \_\_\_\_\_  
 Cronin \_\_\_\_\_  
 Ripple \_\_\_\_\_  
 Anderson \_\_\_\_\_

COUNTY Seneca

DATE checked 12/29/71  
*drawn 1/15/72*

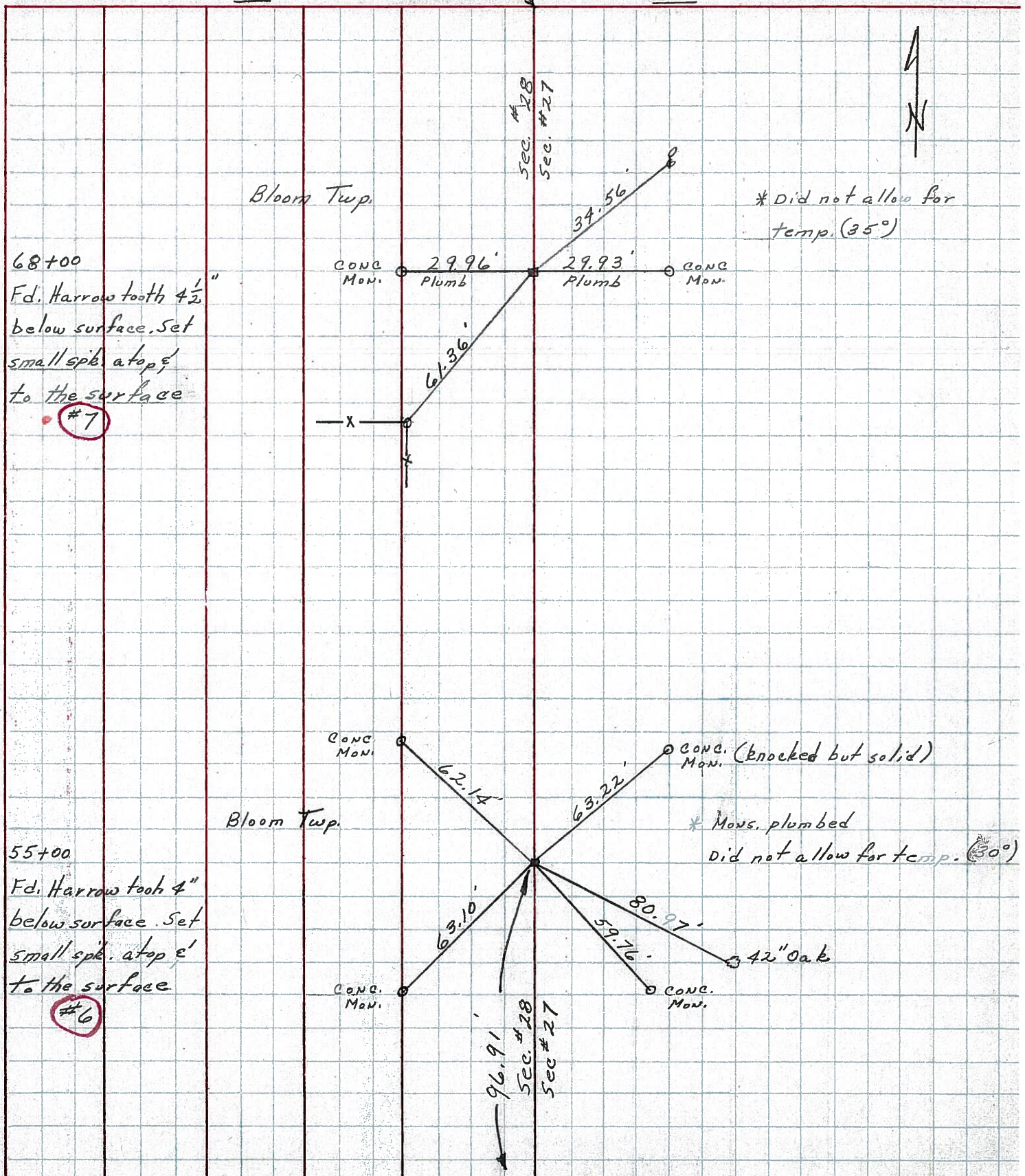
S. R. # 19

WEATHER \_\_\_\_\_

SEC. G

TEMP. 30°

DESCRIPTION Ties for Control Points - Sen. Co. Line - North to Bloomville JOB NO. \_\_\_\_\_



68+00  
 Fd. Harrow tooth 4 1/2"  
 below surface. Set  
 small spk. at top &  
 to the surface  
 #7

55+00  
 Fd. Harrow tooth 4"  
 below surface. Set  
 small spk. at top &  
 to the surface  
 #6

\* Did not allow for temp. (35°)

\* Mous. plumbed did not allow for temp. (30°)



PERSONNEL	TITLE	PERSONNEL	TITLE	COUNTY	SENECA	DATE	11-18-68
MOSSER				S. R.	# 19	WEATHER	Cloudy
BARBOUR				SEC.	6	TEMP.	39°
Redding							
Potts							

DESCRIPTION Ties for Control Points JOB NO. \_\_\_\_\_

