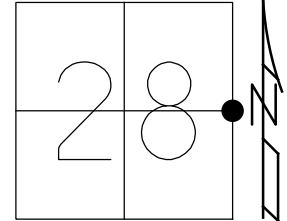


O.D.O.T. DISTRICT 2 SURVEY OFFICE (USE ONLY)

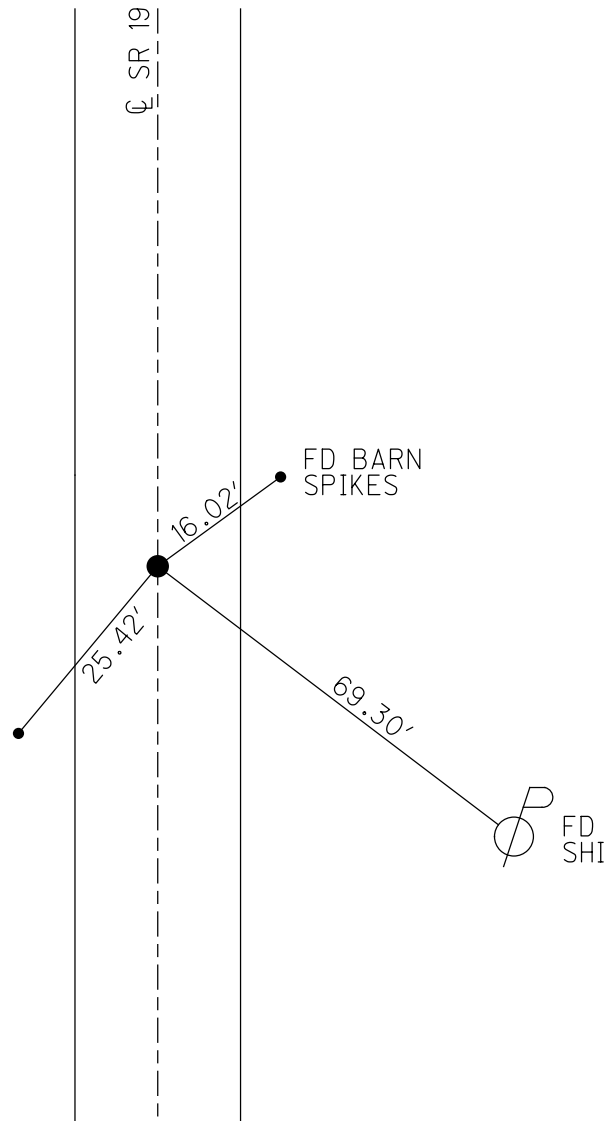
PERSONNEL _____ REFERENCE NO. 8 SHEET 10 OF 64
 NOTES AUBLE DATE 3/17/21 ROUTE SR 19
 H.C. NIESE WEATHER FAIR COUNTY SENECA
 R.C. AUBLE TEMP. 37° TOWNSHIP BLOOM
 DWG BY NIESE PID 102934 SECTION 28
 T 1 N R 16 E

TYPE MONUMENT BOAT SPIKE
~~ON SURFACE~~ - BELOW 4"
 OFFSET CL PAVEMENT ON LT : RT
10.7' TO RT EDGE PAVEMENT
 STATION: 80+88.89



HORZ.DATUM: NAD83(2011) GEOID: NAVD88 12A
 GRID: NORTHING: 491974.608 EASTING: 1826219.214

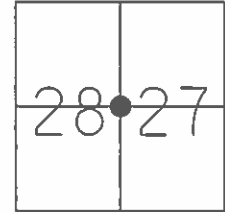
RECORD:
 STA 80+91
 FD BOAT SPIKE
 2 1/4" DOWN
 ATOP HARROW TOOTH
 6" DOWN
 1/12/84
 SET P.K./WASHER
 9/10/92, RCC
 FD P.K./WASHER
 REF8
 12/30/13, TMR
 FD P.K./WASHER
 REF8
 8/17/15, JFO
 SET MAG/WASHER
 NEWREF8
 7/15/16, JFO
 FD BOAT SPIKE
 4" DOWN
 REF8
 3/17/21, DSA
 8/2/21, DSA



O.D.O.T. DISTRICT 2 SURVEY OFFICE (USE ONLY)

PERSONNEL _____ REFERENCE NO. 8 SHEET 10 OF 64
 NOTES RHOADES DATE 08-17-2015 ROUTE SR 19
 H.C. O'DONNELL WEATHER CLOUDY COUNTY SENECA
 R.C. HOMAN TEMP. 80°F TOWNSHIP BLOOM
 SECTION 27 & 28
 T 1 N R 16 E

TYPE MONUMENT BOAT SPIKE
~~ON SURFACE~~ - BELOW 5"
~~LEFT - C~~ PAV'T - ~~RIGHT~~ ON
10.7' TO RT EDGE PAVEMENT
 S.L.M. 80+88.89



Grid: Northing: 491974.6199 Easting: 1826219.2175

RECORD STA 80+91
 FND BOAT SPK. (2.25' DOWN)
 ATOP HARROW TOOTH
 6" BELOW SURFACE
 01-12-1984

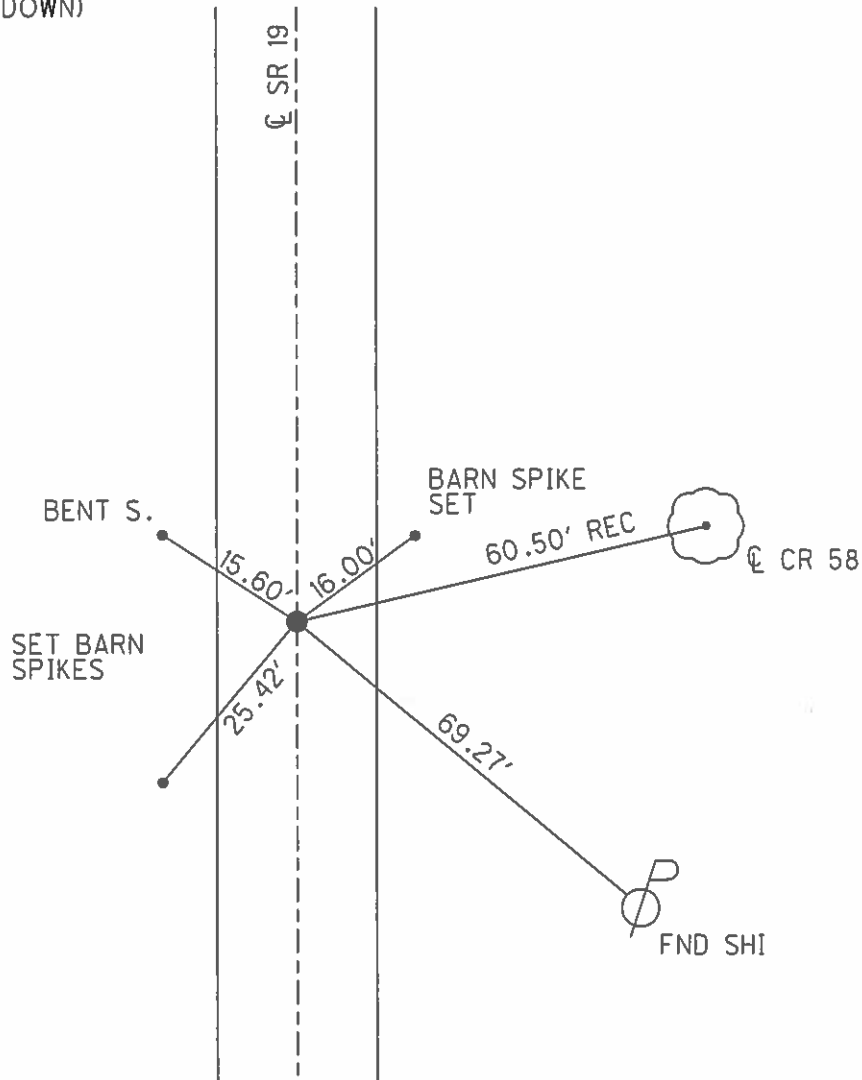
SET PK & WASHER
 09-10-1992 RCC

FND PK & WASHER
 12-05-2013 JMR

GPS REF8
 12-30-13, TMR

GPS REF8
 08-17-2015, JMR

SET MAG & WASHER
 GPS, NEWREF8
 07-15-2016, JFO



O.D.O.T. DISTRICT 2 SURVEY OFFICE (USE ONLY)

PERSONNEL _____

REFERENCE NO. 08

SHEET 10 OF 62

NOTES CANTERBURY

DATE 04-13-06

ROUTE SR 19

H.C. MICKLOVICK

WEATHER SUNNY

COUNTY SENECA

R.C. HOUESHELL

TEMP. +62°

TOWNSHIP BLOOM

SECTION 27 & 28

T 1 N R 16 E

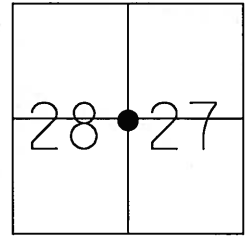
TYPE MONUMENT FD. PK./WASHER

ON SURFACE - ~~BELOW~~ ON SURFACE

~~LEFT~~ - C PAV'T - ~~RIGHT~~ ON CL.

10.7' TO RT. EDGE PAVEMENT

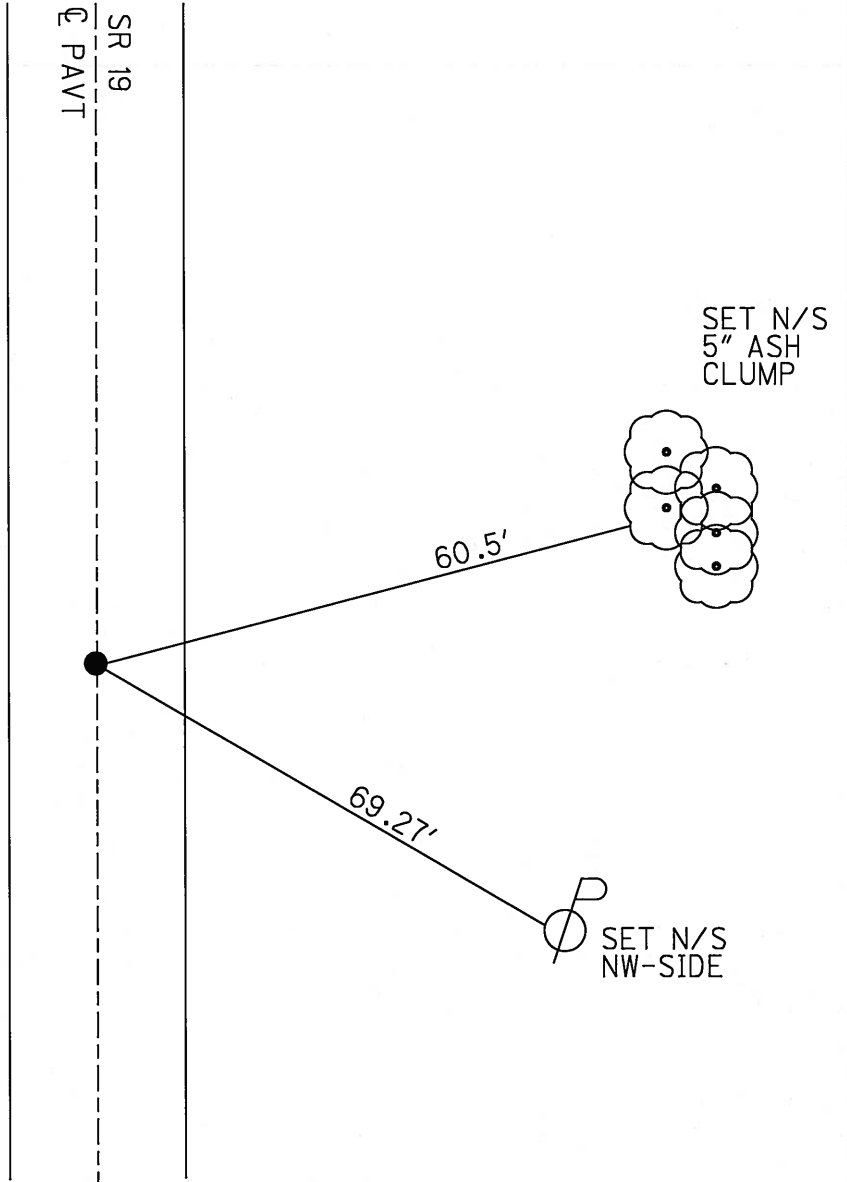
S.L.M. 80+91 (SV10)



Grid: Northing: _____ Easting: _____

RECORD STA. 80+91
 FD. BOAT SPK. (2.25' DOWN)
 ATOP HARROW TOOTH
 6" BELOW SURFACE
 01-12-84

SET PK/WASHER
 09-10-92 RCC



O.D.O.T. DISTRICT 2 SURVEY OFFICE

PERSONNEL

REFERENCE NO. 8

SHEET 9 OF 53

NOTES CHENEY

H.C. BARBOUR

DATE 6-19-1992

ROUTE #19

R.C. GEYMAN

WEATHER SUNNY

COUNTY SENECA

RIPPLE

TEMP. 75°

TOWNSHIP BLOOM

SECTION 28+27

T/L N/R 16 E

TYPE MONUMENT BOAT SPK.

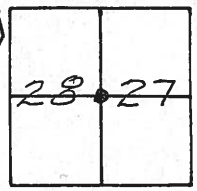
ON SURFACE - BELOW YES

~~LEFT~~ - PAV'T. - RIGHT ON

10.0 TO RT. EDGE PAVEMENT

S.L.M. 81+03

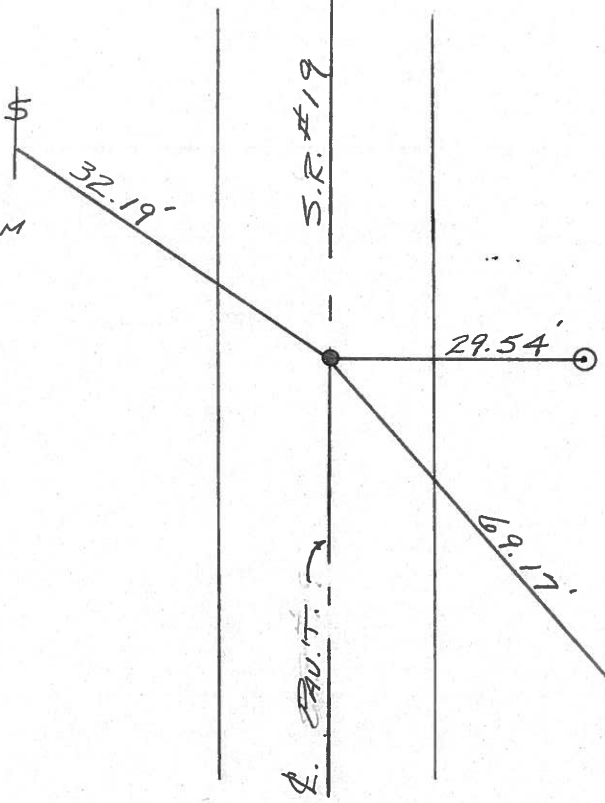
SET PK/WASHER
 9-10-1992
 RCC



RECORD: 1/13/84 STA. 80+91

FD BOAT SPK. (2 1/4" BELOW SURFACE) AT OP
 HARROW TOOTH (6" BELOW SURFACE)

NOTCH IN
 TELEPHONE
 CABLE SIGN
 POST. (0.5' FROM
 GROUND.)



O.D.O.T. CONC.
 MONUMENT
 (TOP OF BENT
 IRON PIN TOWARD
 ROAD)

P.F.D.
 N/S.
 N.W. SIDE

County Seneca S.R. # 19

Date 1/13/84

Township Bloom

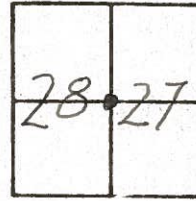
Weather overcast

Section 27 & 28

Temp. 15°

T 1 N, R 16 E

Personnel Cronin

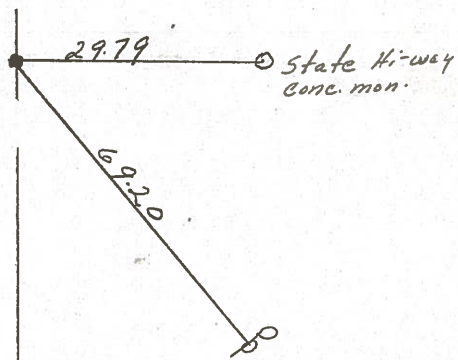


③

Ripple
Geyman
Barbour



80+91
Ed. boat spike 2 1/2" below
surface. a top harrow tooth
(6" below surface)



S.S.R. #19

County SENECA S.R. 19

Date 7/5/79

Township BLOOM

Weather sunny

Section E. Line 28 & W. Line 27

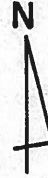
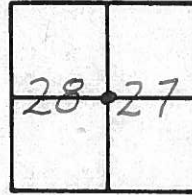
Temp. 67°

T/N, R/E

Personnel Cronin

Lippie

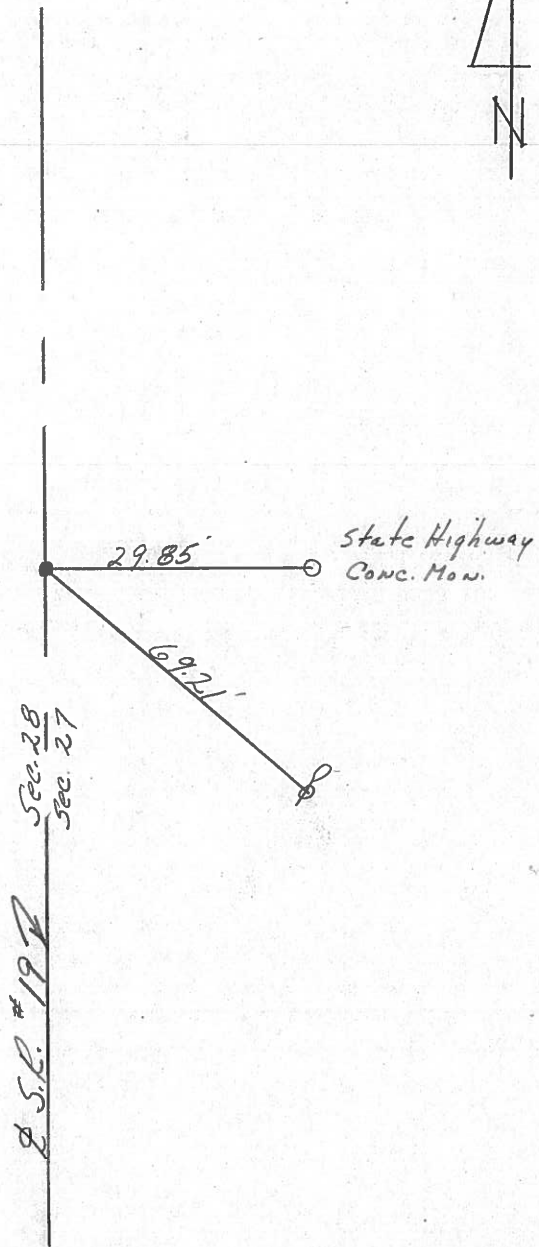
Geyman



⑧



80+91
Fd. bolt spike 1" below
surface. Harrow tooth below
& 5" below surface



PERSONNEL TITLE PERSONNEL TITLE

Ash
Cronin
Lippie
Anderson

COUNTY Seneca

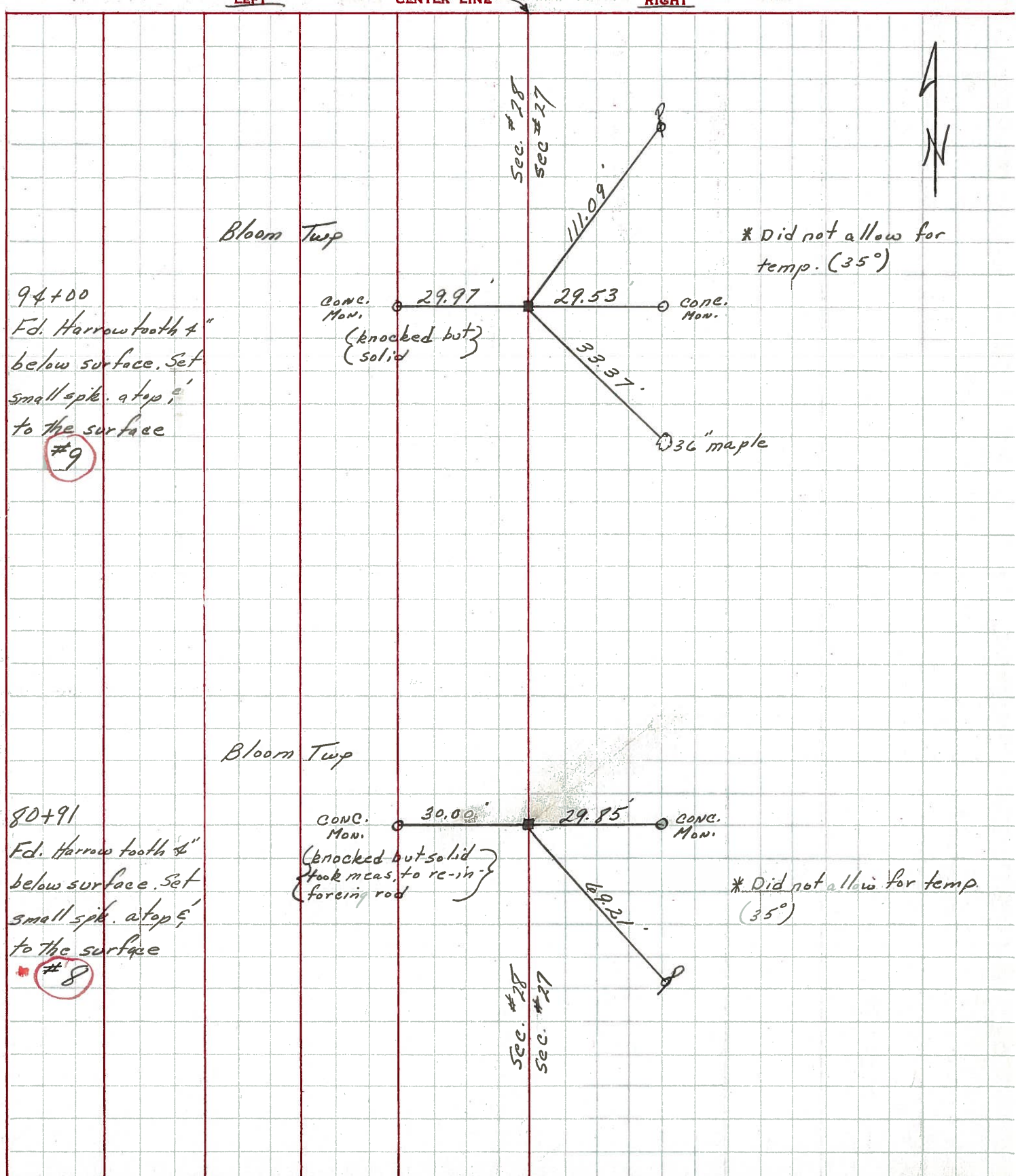
S. R. #19

WEATHER

SEC. G

TEMP. 35°

DESCRIPTION Ties for Control Points - Sen. Co. Line - North to Bloomville JOB NO.



PERSONNEL	TITLE	PERSONNEL	TITLE	COUNTY	DATE
MOSSEK				Seneca	11-18-68
BARBOUR				S. R. # 19	WEATHER Cloudy-Cold
Redding				SEC. 6	TEMP. 37°
Potts					

DESCRIPTION Ties for Control Points-Sen Co Line to Bloomville JOB NO. _____

