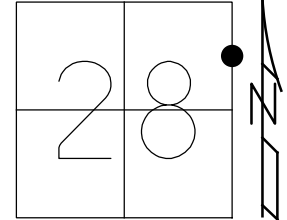


O.D.O.T. DISTRICT 2 SURVEY OFFICE (USE ONLY)

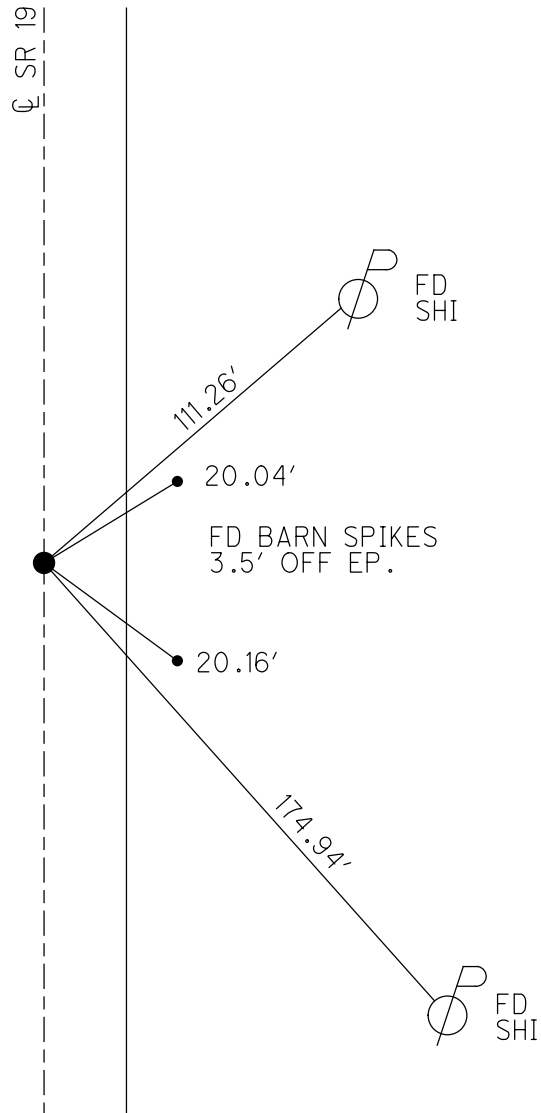
PERSONNEL _____ REFERENCE NO. 9 SHEET 11 OF 64
 NOTES AUBLE DATE 3/17/21 ROUTE SR 19
 H.C. NIESE WEATHER FAIR COUNTY SENECA
 R.C. AUBLE TEMP. 37° TOWNSHIP BLOOM
 DWG BY NIESE PID 102934 SECTION 28
 T 1 N R 16 E

TYPE MONUMENT MAG/WASHER
 ON SURFACE - ~~BELOW~~ ON
 OFFSET ☉ PAVEMENT ON LT : RT
10.2' TO RT EDGE PAVEMENT
 STATION: 93+97.67



HORZ. DATUM: NAD83(2011) GEOID: NAVD88 12A
 GRID: NORTHING: 493283.241 EASTING: 1826231.660

RECORD:
 STA 94+00
 FD P.K./WASHER
 ATOP BOAT SPK
 ATOP HARROW TOOTH
 6.5" DOWN
 1/13/84
 SET P.K./WASHER
 9/10/92, RCC
 FD P.K./WASHER
 REF9
 12/30/13, TMR
 8/17/15, JMR
 SET MAG/WASHER
 NEWREF9
 7/15/16, JFO
 FD MAG/WASHER
 REF9
 10/29/19, JFO
 FD MAG/WASHER
 REF9
 3/17/21, DSA
 8/2/21, DSA

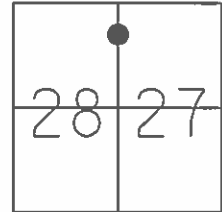


O.D.O.T. DISTRICT 2 SURVEY OFFICE (USE ONLY)

PERSONNEL _____ REFERENCE NO. 9 SHEET 11 OF 64

NOTES RHOADES DATE 08-17-2015 ROUTE SR 19
 H.C. O'DONNELL WEATHER FAIR COUNTY SENECA
 R.C. HOMAN TEMP. 82°F TOWNSHIP BLOOM
 SECTION 27 & 28
 T 1 N R 16 E

TYPE MONUMENT PK & WASHER
 ON SURFACE - ~~BELOW~~ ON
~~LEFT - C~~ PAV'T - ~~RIGHT~~ ON
10.2' TO RT EDGE PAVEMENT
 S.L.M. 93+97.67
 Grid: Northing: 493283.2302 Easting: 1826231.6691



RECORD STA 94+00
 FND PK WASHER ATOP
 BOAT SPK ATOP
 HARROW TOOTH
 6.5" BELOW SURFACE
 01-13-1984

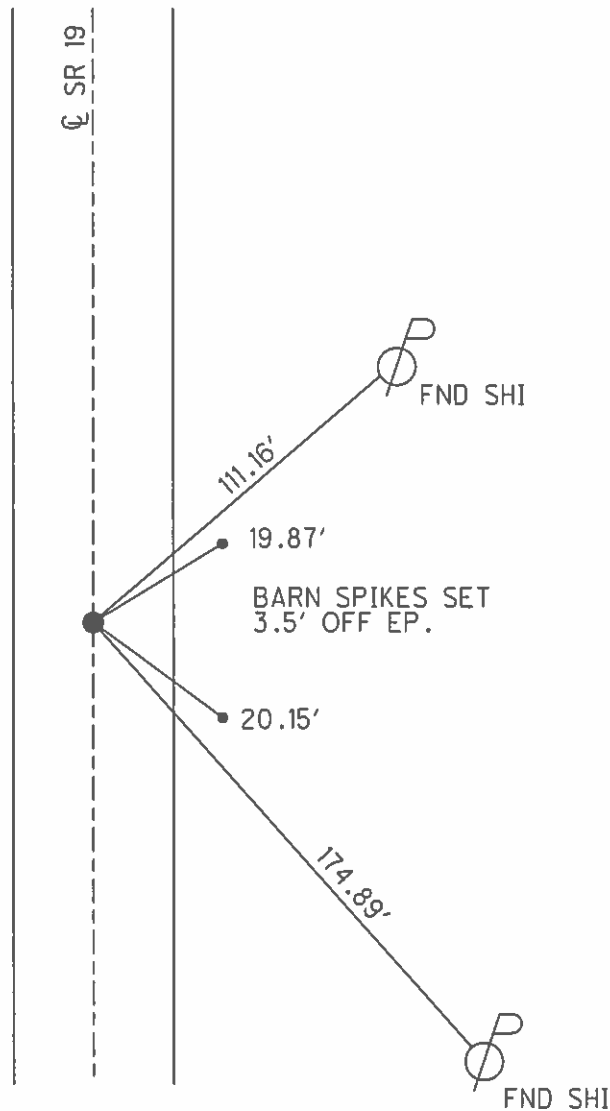
SET PK & WASHER
 09-10-1992 RCC

FND PK & WASHER
 12-05-2013 JMR

GPS REF9
 12-30-13, TMR

GPS REF9
 08-17-2015, JMR

SET MAG & WASHER
 GPS, NEWREF9
 07-15-2016, JFO



O.D.O.T. DISTRICT 2 SURVEY OFFICE (USE ONLY)

PERSONNEL _____

REFERENCE NO. 09

SHEET 11 OF 62

NOTES CANTERBURY

DATE 04-13-06

ROUTE SR 19

H.C. MICKLOVICK

WEATHER SUNNY

COUNTY SENECA

R.C. HOUDESHHELL

TEMP. +62°

TOWNSHIP BLOOM

SECTION 27 & 28

T 1 N R 16 E

TYPE MONUMENT FD. PK./WASHER

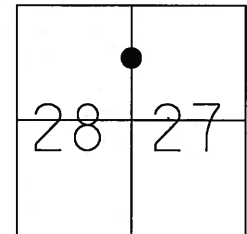
ON SURFACE - ~~BELOW~~ ON SURFACE

~~LEFT~~ - C PAV'T - ~~RIGHT~~ ON CL.

10.2' TO RT. EDGE PAVEMENT

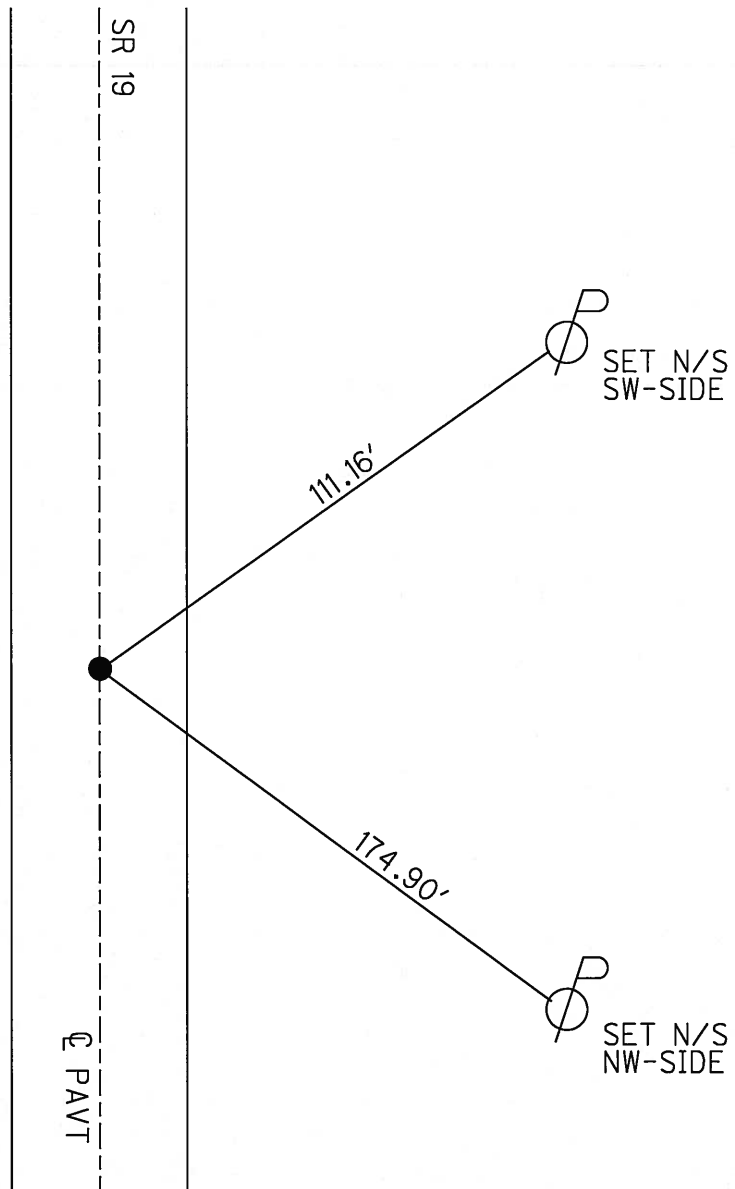
S.L.M. 93+99 (SV11)

Grid: Northing: _____ Easting: _____



RECORD STA. 94+00
 FD. PK./WASHER ATOP
 BOAT SPK. ATOP
 HARROW TOOTH
 6.5" BELOW SURFACE
 01-13-84

SET PK/WASHER
 09-10-92 RCC



O.D.O.T. DISTRICT 2 SURVEY OFFICE

PERSONNEL

REFERENCE NO. 9

SHEET 10 OF 53

NOTES CHENEY

6-19

H.C. BARBOUR

DATE 9-10-1992

ROUTE #19

R.C. GEYMAN

WEATHER SUNNY

COUNTY SENECA

RIPPLE

TEMP. 75°

TOWNSHIP BLOOM

SECTION 27+28

T.L.N.R. 16 E

TYPE MONUMENT PK/WASHER

SET PK/WASHER

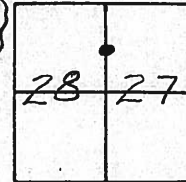
ON SURFACE - BELOW YES

9-10-1992

~~LEFT~~ - PAV'T. - RIGHT ON

E.C.C.

10.0 TO RT. EDGE PAVEMENT



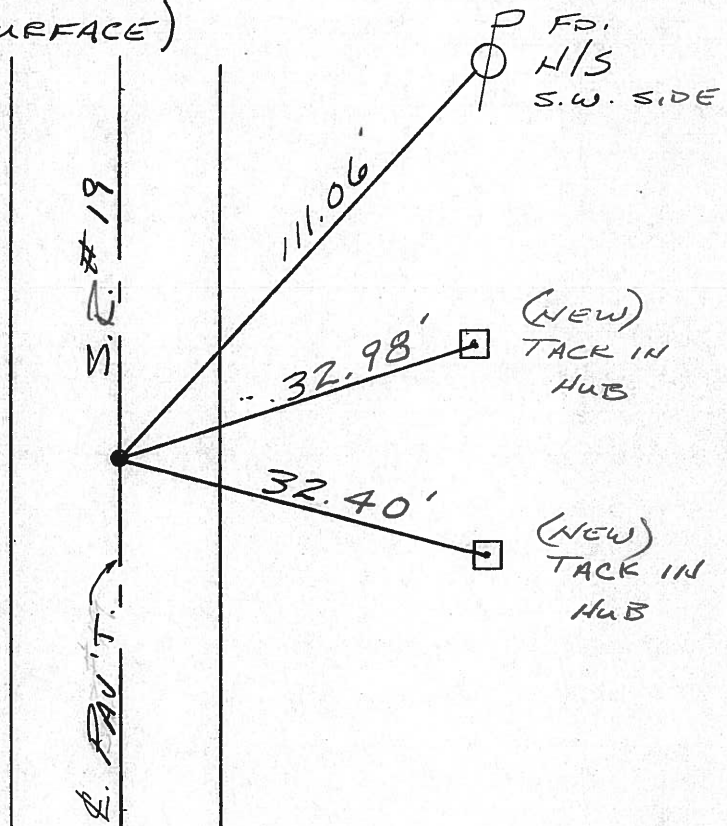
S.L.M. 94+09

RECORD: 11/13/84 STA. 94+00

FD. PK/WASHER ATOP

BOAT SPK. ATOP

HARROW TOOTH (6 1/2" BELOW SURFACE)



County Seneca S.R. #19

Date 1/13/84

Township Bloom

Weather overcast

Section 27 & 28

Temp. 15°

T/N, R/E

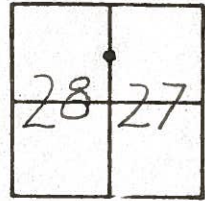
Personnel Cronin

Ripple

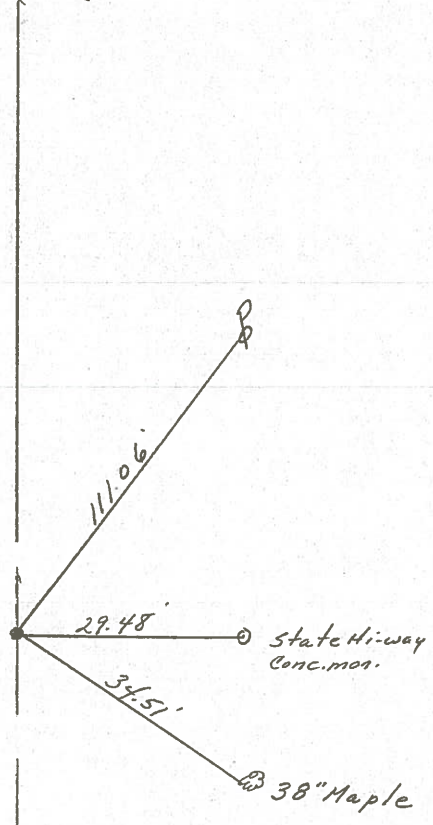
Geyman

Barbour

9



94400
Fd. P.R. & washer on surface
atop boat spike atop harrow
tooth (6 1/2" below surface)



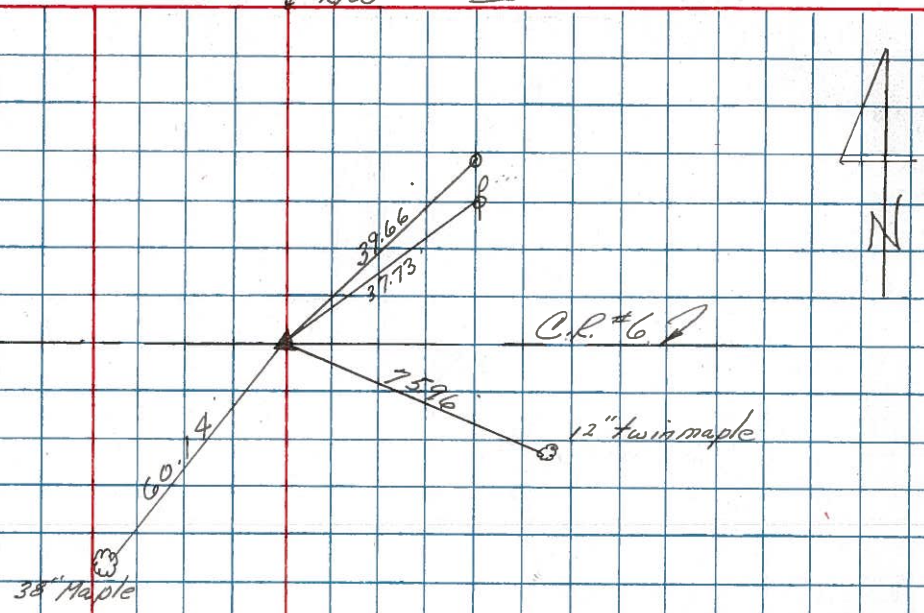
S.R. #19

PERSONNEL	TITLE	PERSONNEL	TITLE	COUNTY	DATE
Cronin				Seneca	2/08/83
Ripple				#19	WEATHER overcast
Geyman				SEC. Bridge-Sen. 19-01.97	TEMP. 26°
Barbour					

DESCRIPTION Control Point Ties & Alignment LEFT CENTER LINE RIGHT JOB NO.

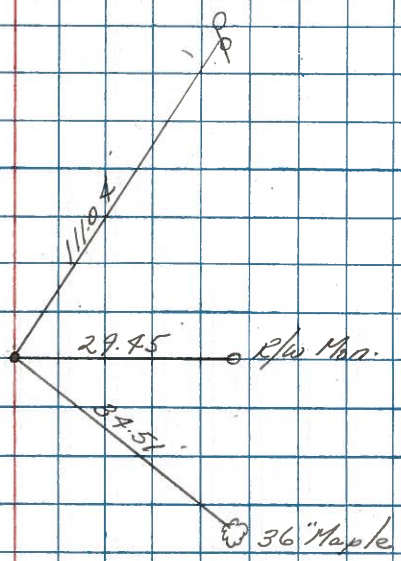
10

P.I.
 107+42.60 (This survey using
 104+01.60 as stationing for
 rear abut - Bridge 01.97 SLM.)
 107+43 = Sta. of 1936 Plans



9

P.O.T
 94+00
 Fd boat spike 1" below
 surface Harrow tooth 5"
 below



County SENECA S.R. 19

Date 7/5/79

Township BLOOM

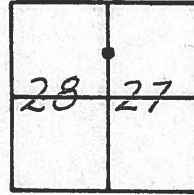
Weather Sunny

Section E. Lin 28 & W. Line 27

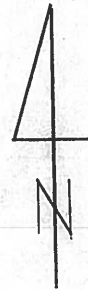
Temp. 68°

T/N, R/E

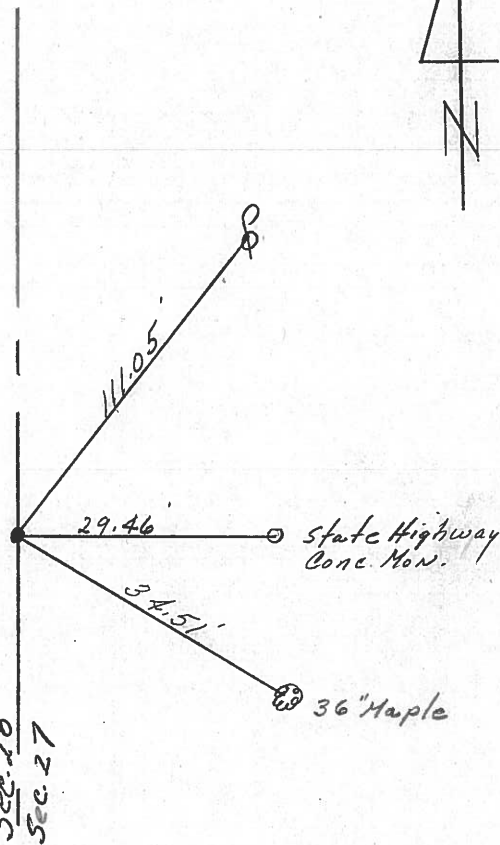
Personnel Cronin
Ripple
Geyman



9



94+00
Ed. bolt spike 1" below
surface. Harrow tooth below
a 5" below surface



S.S.R. # 197

PERSONNEL	TITLE	PERSONNEL	TITLE
Ash			
Cronin			
Ripple			
Anderson			

COUNTY Seneca

DATE checked 12/29/17
drawn 1/5/17

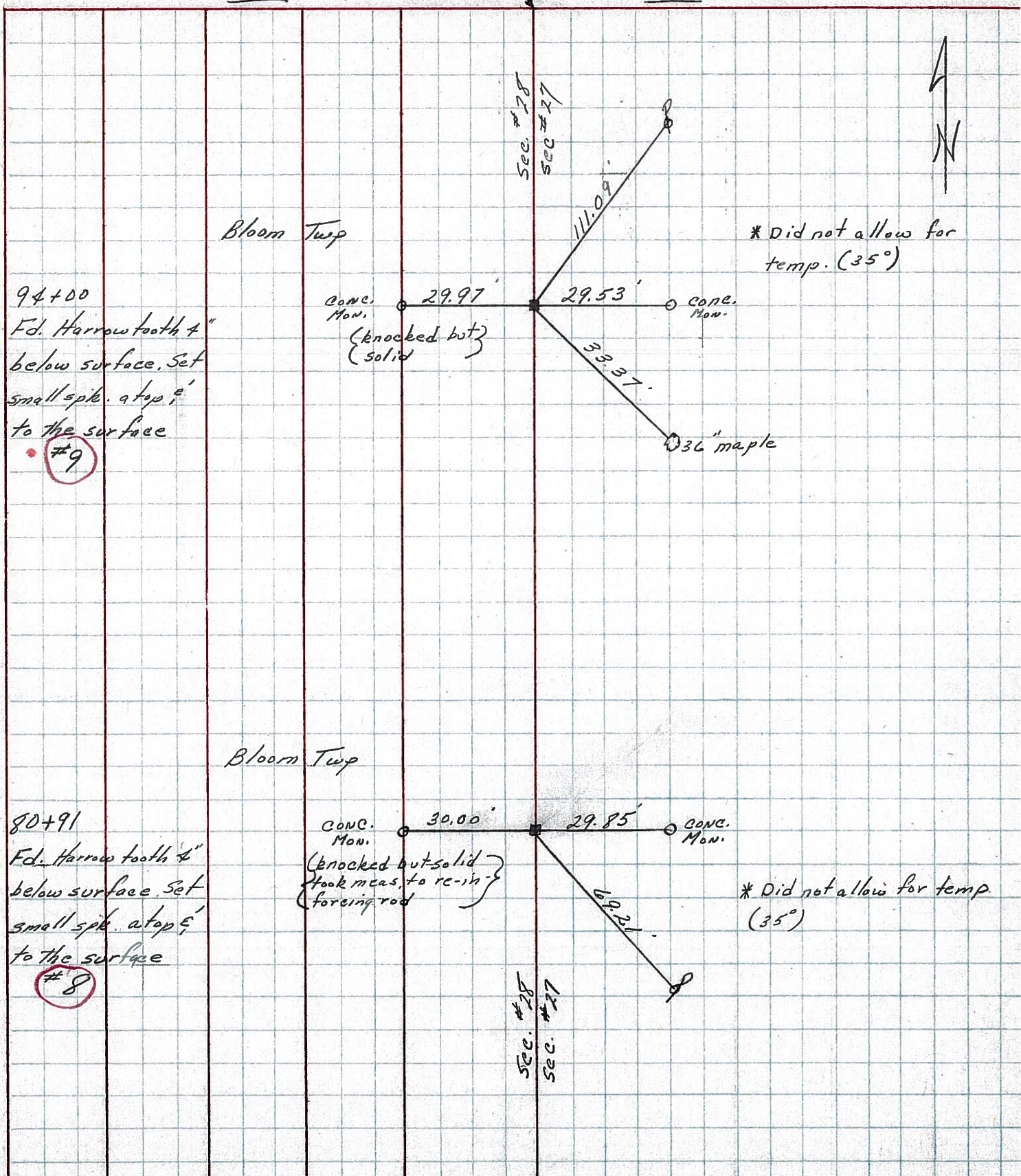
S. R. # 19

WEATHER

SEC. G

TEMP. 35°

DESCRIPTION Ties for Control Points - Sen. Co. Line - North to Bloomville JOB NO.



PERSONNEL	TITLE	PERSONNEL	TITLE
MOSSE			
BARBOUR			
Redding			
Potts			

COUNTY Seneca DATE 11-18-68
 S. R. # 19 WEATHER cloudy-cold
 SEC. 6 TEMP. 37°

DESCRIPTION Ties for Control Points - Seneca Line to Bloomville JOB NO.

5

123400

R/W Man 30.19 29.87 R/W Man

8211

13

117+12

Did Not find

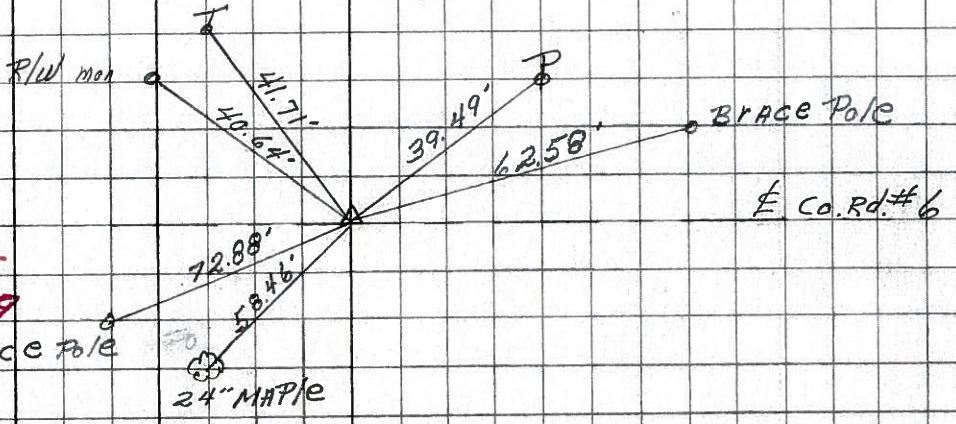
546
8210

10

107+43

P.R. SPK.

545
8209
BRACE POLE



BRACE POLE

Co. Rd. # 6

9

94+00

Did Not find

544
8208

8

80+91

Did Not find

545
8207