

O.D.O.T. DISTRICT 2 SURVEY OFFICE (USE ONLY)

PERSONNEL

REFERENCE NO. 9 A

SHEET 12 OF 64

NOTES AUBLE

DATE 3/17/21

ROUTE SR 19

H.C. NIESE

WEATHER FAIR

COUNTY SENECA

R.C. AUBLE

TEMP. 37°

TOWNSHIP BLOOM

SECTION 28

DWG BY NIESE

PID 102934

T 1 N R 16 E

TYPE MONUMENT MAG/WASHER

ON SURFACE - ~~BELOW~~ ON

OFFSET CL PAVEMENT 1.2' LT : ~~RT~~

9.5' TO LT EDGE PAVEMENT

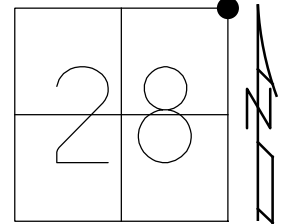
STATION: 107+40.75

HORIZ.DATUM: NAD83(2011)

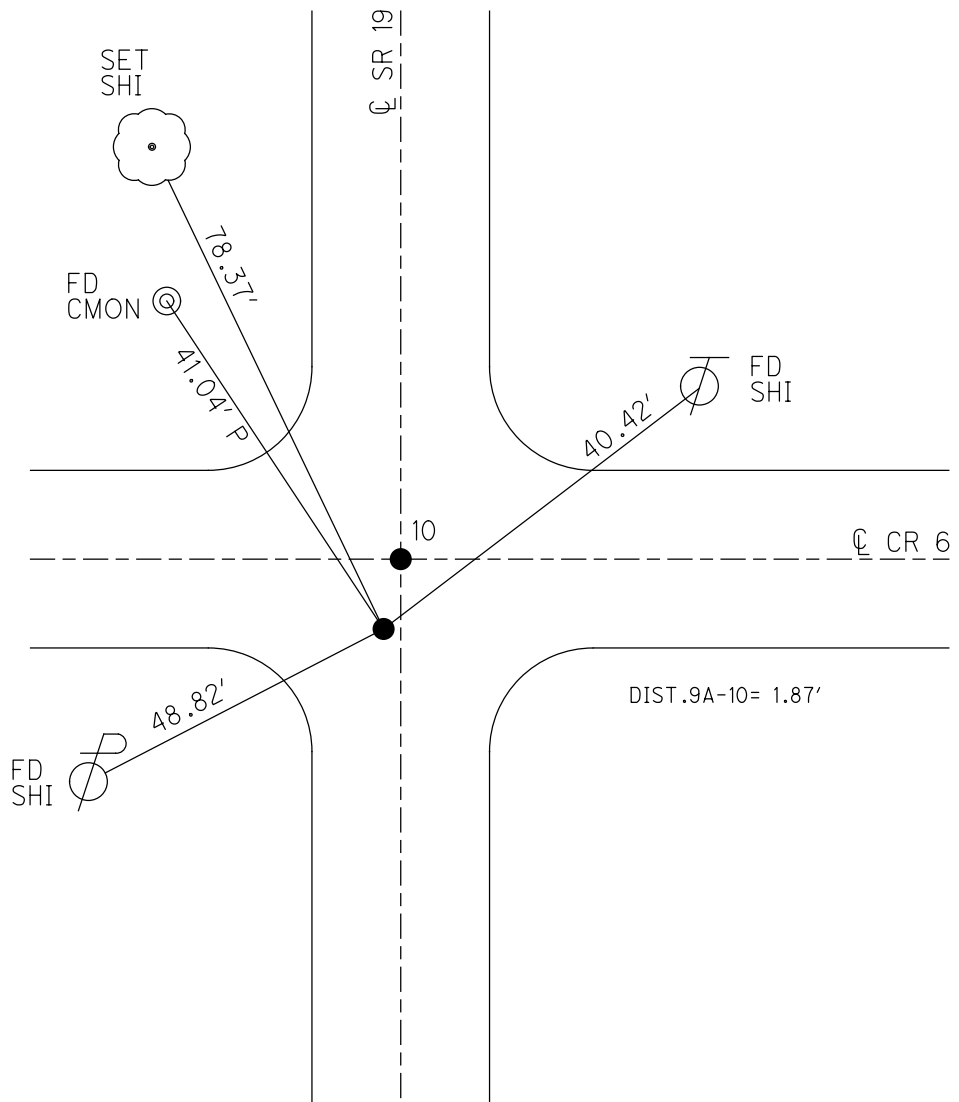
GEOID: NAVD88 12A

GRID: NORTHING: 494623.937

EASTING: 1826243.800



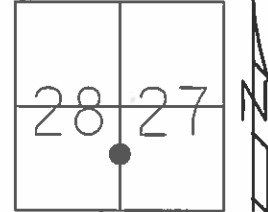
RECORD:  
 FD P.K./WASHER  
 ATOP R.R. SPIKE  
 ORIGIN UNKNOWN  
 1/23/84  
 SET P.K./WASHER  
 9/10/92, RCC  
 D.N.F.  
 12/5/13, JMR  
 FD R.R. SPIKE  
 5" DOWN  
 8/17/15, JMR  
 SET MAG/WASHER  
 7/15/16, JFO  
 FD MAG/WASHER  
 10/29/19, JFO  
 FD MAG/WASHER  
 REFA9  
 10/29/19, JFO  
 FD MAG/WASHER  
 8/2/21, DSA



O.D.O.T. DISTRICT 2 SURVEY OFFICE (USE ONLY)

PERSONNEL \_\_\_\_\_ REFERENCE NO. 9 A SHEET 12 OF 64  
 NOTES RHOADES DATE 08-17-2015 ROUTE SR 19  
 H.C. O'DONNELL WEATHER FAIR COUNTY SENECA  
 R.C. HOMAN TEMP. 82°F TOWNSHIP BLOOM  
 \_\_\_\_\_ SECTION 27 & 28  
 \_\_\_\_\_ T 1 N R 16 E

TYPE MONUMENT RR. SPK.  
 ON SURFACE - ~~BELOW~~ ON  
 LEFT - CL PAV'T - RIGHT 1.2', (ON CL WEST)  
9.5' TO LT. EDGE PAVEMENT  
 S.L.M. 107+38.44



Grid: Northing: 494623.9122 Easting: 1826243.8073

RECORD 1-23-1984  
 FND PK & WASHER  
 ATOP RR. SPK.  
 ORIGIN UNKNOWN

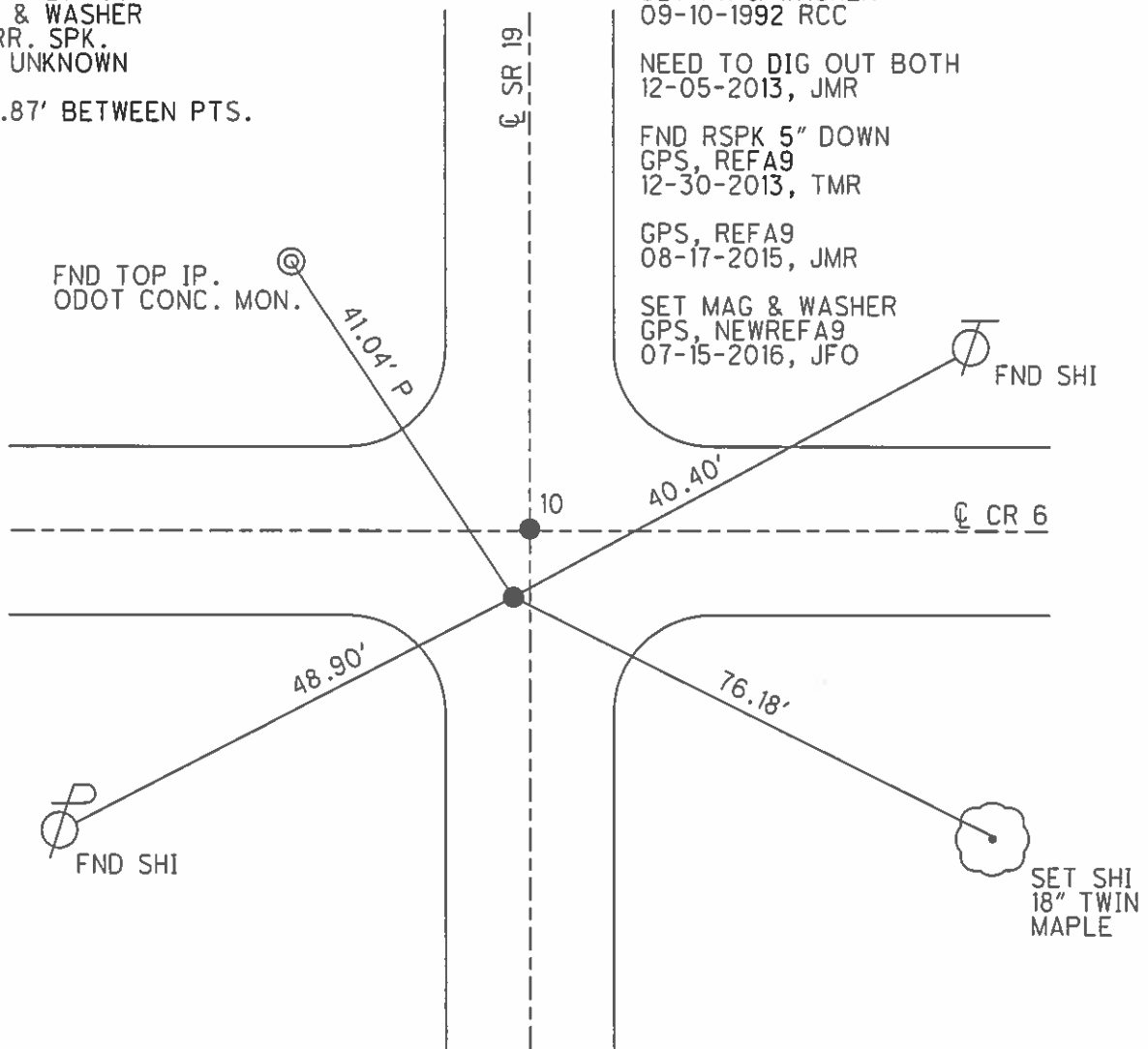
NOTE 1.87' BETWEEN PTS.

SET PK & WASHER  
 09-10-1992 RCC  
 NEED TO DIG OUT BOTH  
 12-05-2013, JMR

FND RSPK 5" DOWN  
 GPS, REFA9  
 12-30-2013, TMR

GPS, REFA9  
 08-17-2015, JMR

SET MAG & WASHER  
 GPS, NEWREFA9  
 07-15-2016, JFO



O.D.O.T. DISTRICT 2 SURVEY OFFICE (USE ONLY)

PERSONNEL \_\_\_\_\_

REFERENCE NO. 9A

SHEET 12 OF 62

NOTES CANTERBURY

DATE 04-13-06

ROUTE SR 19

H.C. MICKLOVICK

WEATHER SUNNY

COUNTY SENECA

R.C. HOUDSHELL

TEMP. +62°

TOWNSHIP BLOOM

SECTION 27 & 28

T 1 N R 16 E

TYPE MONUMENT "B" = FD. PK./WASHER

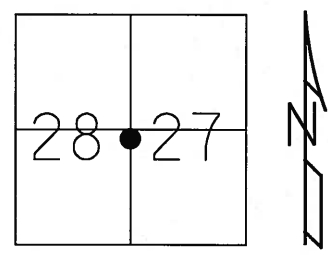
ON SURFACE - ~~BELOW~~ ON SURFACE

LEFT - ~~C PAV'T~~ - RIGHT 1.2' LT. (ON CL. WEST)

9.5' TO LT. EDGE PAVEMENT

S.L.M. 107+38 (SV13)

Grid: Northing: \_\_\_\_\_ Easting: \_\_\_\_\_

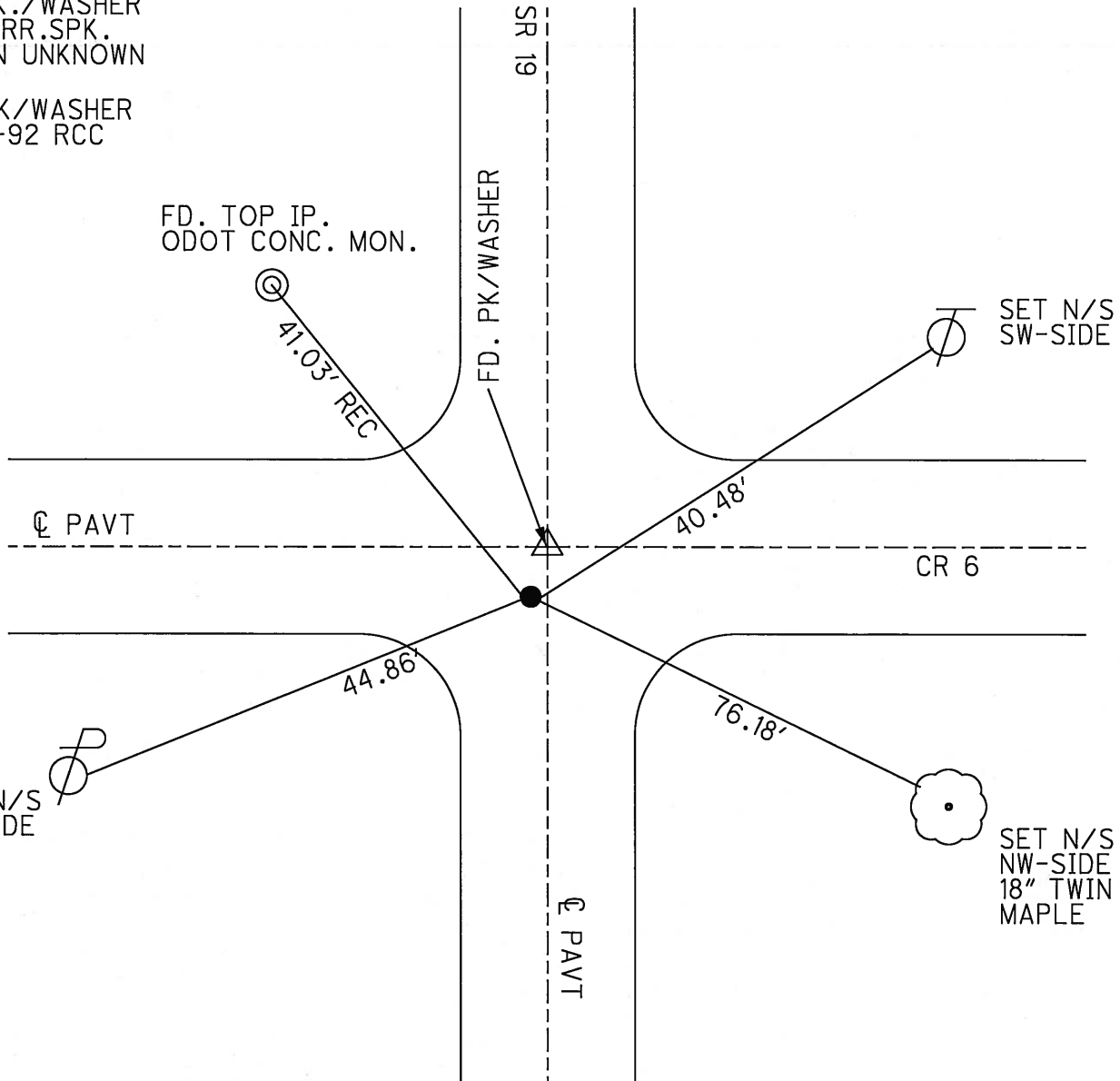


RECORD 1-23-84  
FD. PK./WASHER  
ATOP RR.SP.K.  
ORIGIN UNKNOWN

NOTE: 1.83' BETWEEN PTS.

SET PK/WASHER  
09-10-92 RCC

FD. TOP IP.  
ODOT CONC. MON.



SET N/S  
NE-SIDE

SET N/S  
NW-SIDE  
18" TWIN  
MAPLE

# O.D.O.T. DISTRICT 2 SURVEY OFFICE

PERSONNEL

REFERENCE NO. 10

SHEET 11 OF 53

NOTES CHENEY

H.C. BARBOUR

R.C. GEYMAN

RIPPLE

6-19

DATE 9-10-1992

WEATHER SUNNY

TEMP. 75°

ROUTE # 19

COUNTY SENECA

TOWNSHIP BLOOM

SECTION 21, 22, 27, 28

T. 1 N R 16 E

TYPE MONUMENT PK/WASHERS

ON SURFACE - ~~BELOW~~ YES

LEFT-~~C~~ PAV'T. - ~~RIGHT~~ "A" ON E., "B" IS 0.5' LT.  $\phi$ .

A=10.0'  
B=9.3' TO LT. EDGE PAVEMENT

S.L.M. 107+49

SET PK'S/WASHERS  
9-10-1992  
R.C.C

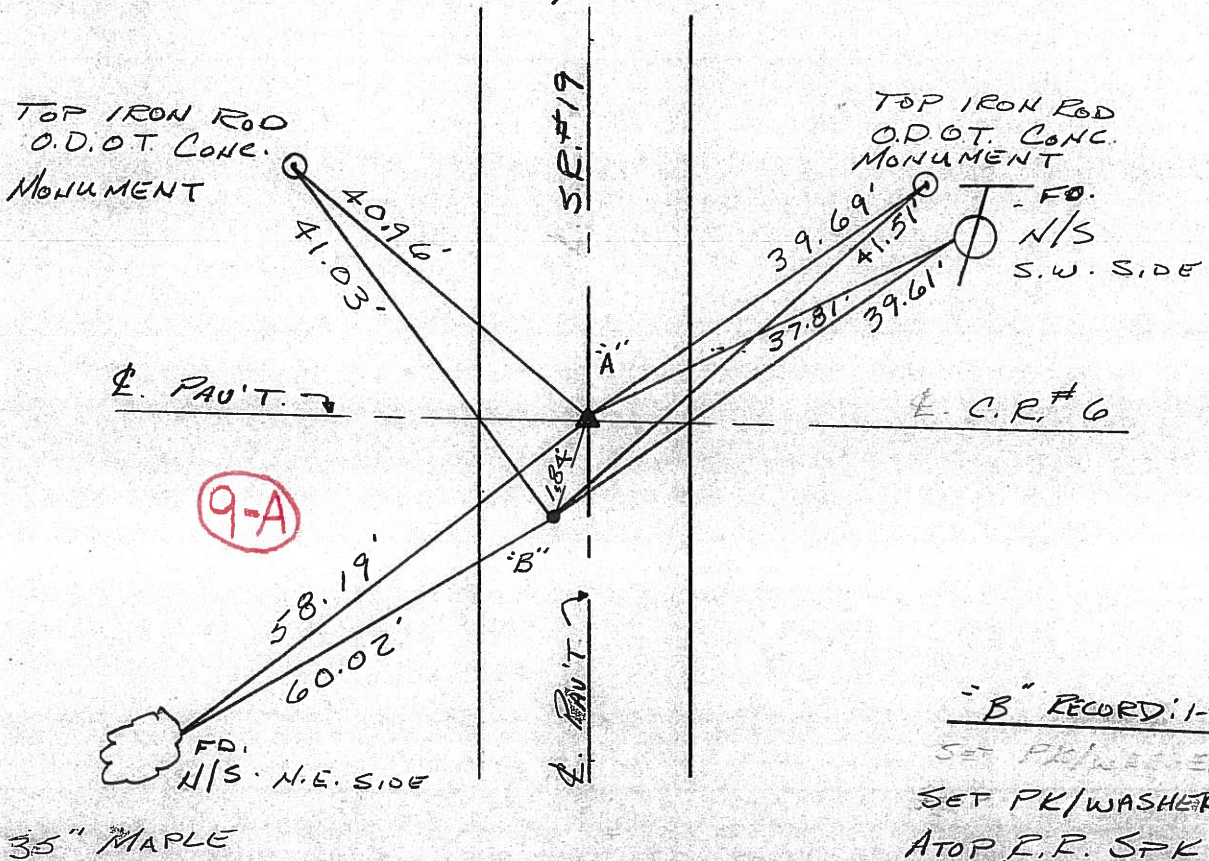
21	22
28	27



RECORDED 11/23/84

P.I.  $\triangle = 00^\circ 50'$  LT. (REC.) "A" STA. 107+43.99

- FD. PK/WASHER ATOP
- PK/WASHER (1 1/2" BELOW SURFACE) ATOP
- BOAT SPK. ATOP
- HARROW TOOTH (1 3/4" BELOW SURFACE)



"B" RECORDED: 1-23-84

SET PK/WASHER  
ATOP E.R. SPK.  
ORIGIN UNKNOWN

County Seneca S.R. #19

Date 1/23/84

Township Bloom

Weather overcast

Section 21, 22, 27, 28

Temp. 17°

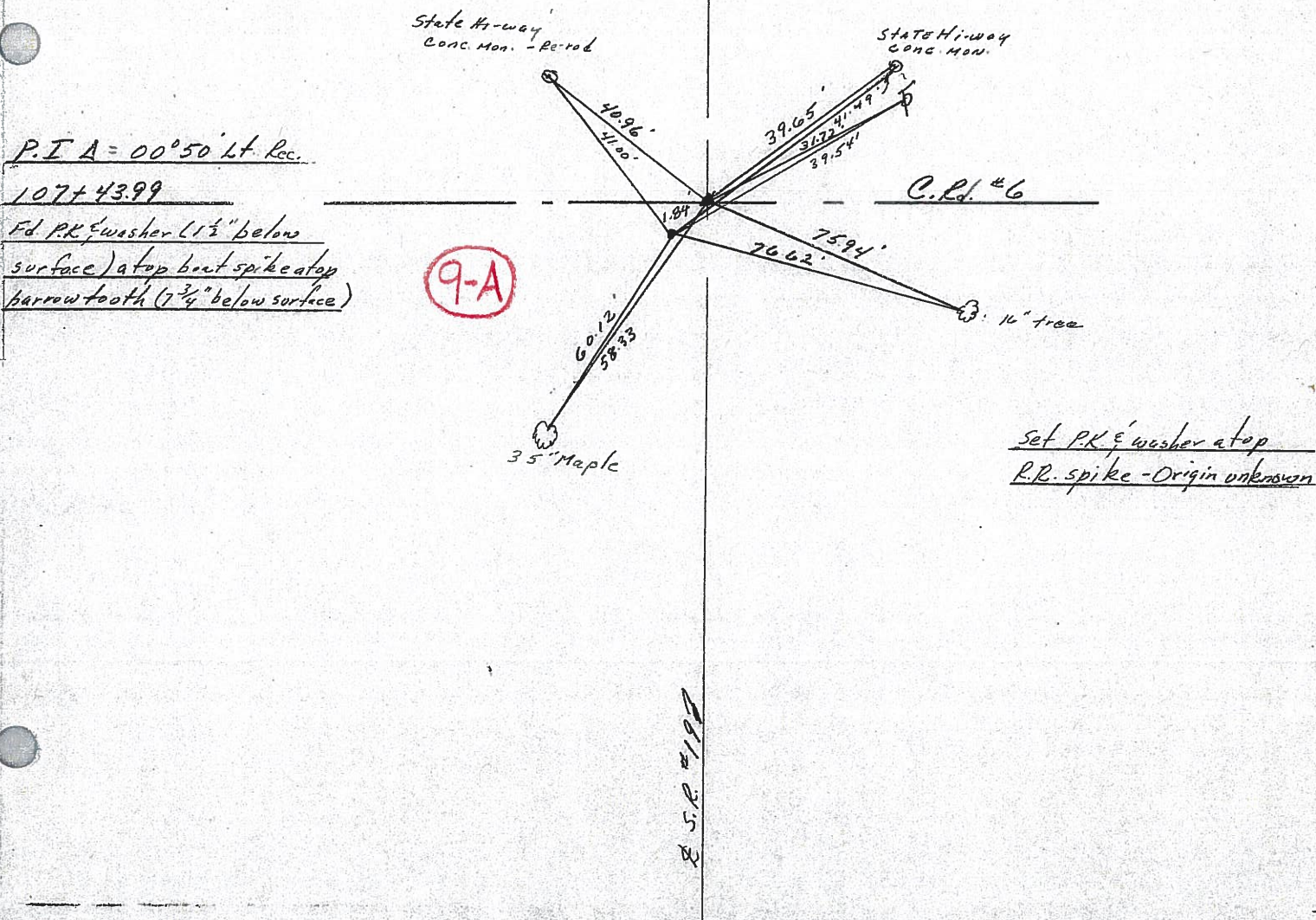
T1N, R16E

Personnel Cronin  
Ripple  
Geyman  
Barbour

21	22
28	27



~~10~~



County SENECA S.R. 19 - Sec. G

Date 7/5/79

Township BLOOM

Weather sunny

Section Corner 21, 22, 27, 28

Temp. 68°

T/LN, R16E

Personnel Cronin

Ripple

Geyman

21	22
28	27

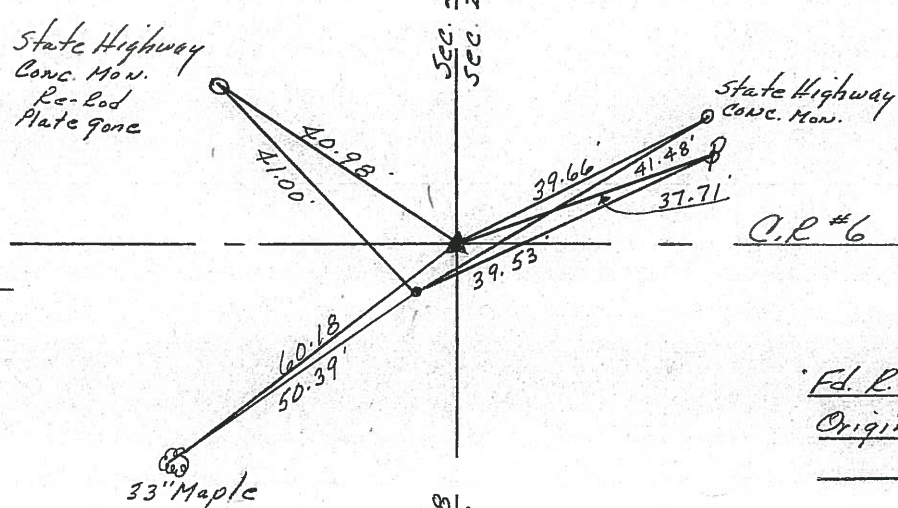


$\Delta = 00^{\circ}50'$  Lt. Rec.

P.I.

107+43.99

set P.K. & washer atop bolt  
spike, atop barrow tooth  
6 7/8" ± below surface



Fd. RR spike on surface  
Origin unknown

9-A

Sec. 28  
Sec. 27

S.R. #19

PERSONNEL TITLE PERSONNEL TITLE

Ash  
Cronin  
Ripple  
Anderson

COUNTY Seneca

DATE checked 1/3/72

S. R. #19

WEATHER

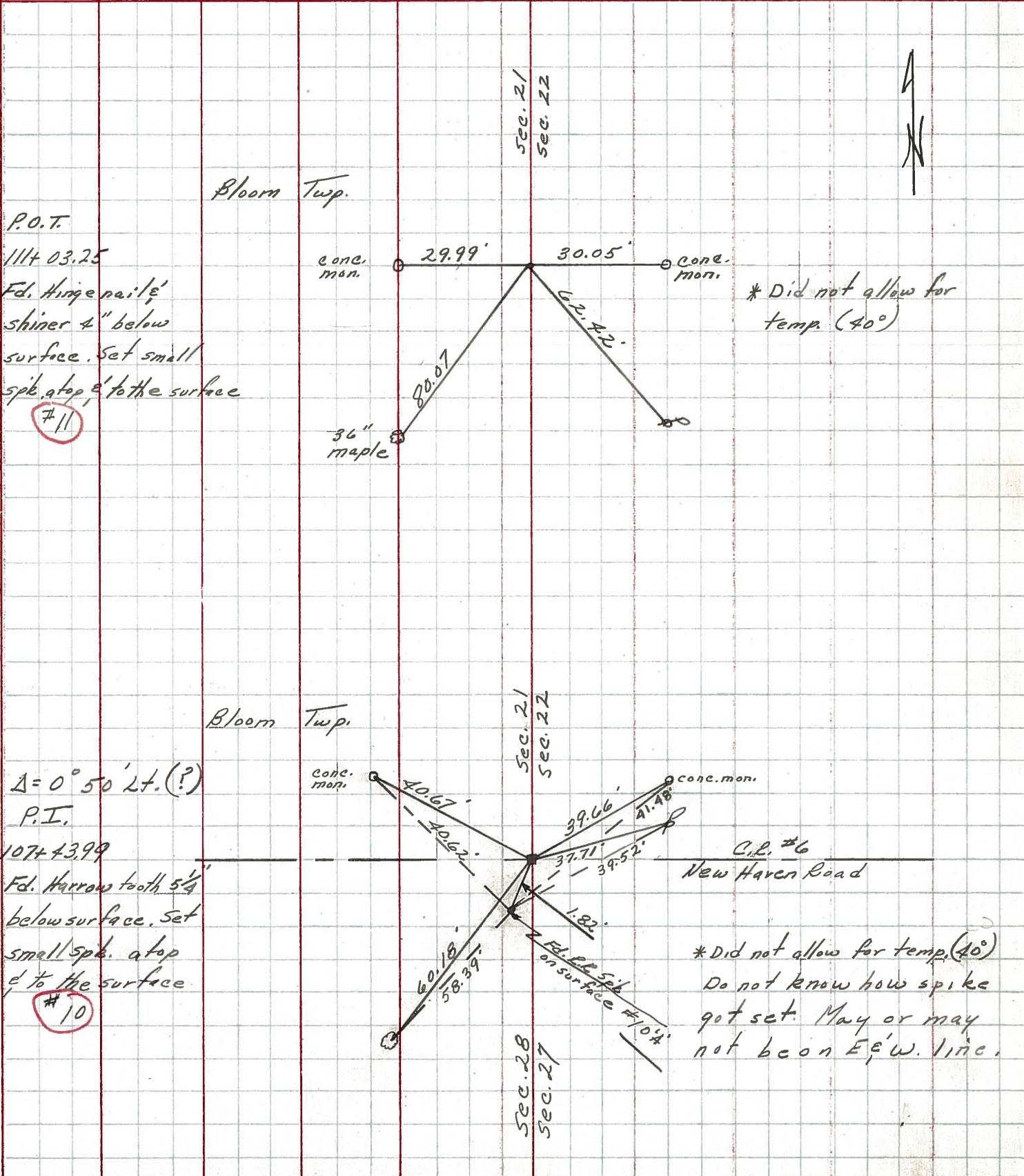
SEC. G

TEMP. 40°

DESCRIPTION Ties for Control Points - Sen. Co. Line - North to Bloomville

SOB NO.

LEFT CENTER LINE RIGHT



P.O.T.  
1114 03.25  
Fd. hinge nail & shiner 4" below surface. Set small spike atop & to the surface  
#11

$\Delta = 0^\circ 50' \text{ Lt. (?)}$   
P.I.  
1074 43.99  
Fd. Harrow tooth 5 1/4" below surface. Set small spike atop & to the surface  
#10

9-A