

O.D.O.T. DISTRICT 2 SURVEY OFFICE (USE ONLY)

PERSONNEL

REFERENCE NO. 10

SHEET 13 OF 64

NOTES AUBLE DATE 3/17/21

H.C. NIESE WEATHER FAIR

R.C. AUBLE TEMP. 37°

ROUTE SR 19

COUNTY SENECA

TOWNSHIP BLOOM

SECTION 28

DWG BY NIESE PID 102934

T 1 N R 16 E

TYPE MONUMENT MAG/WASHER

ON SURFACE - ~~BELOW~~ ON

OFFSET Q PAVEMENT ON LT : RT

10.0' TO LT EDGE PAVEMENT

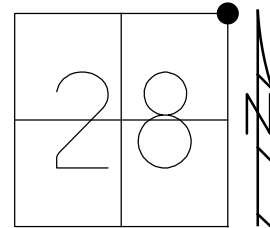
STATION: 107+42.16

HORZ.DATUM: NAD83(2011)

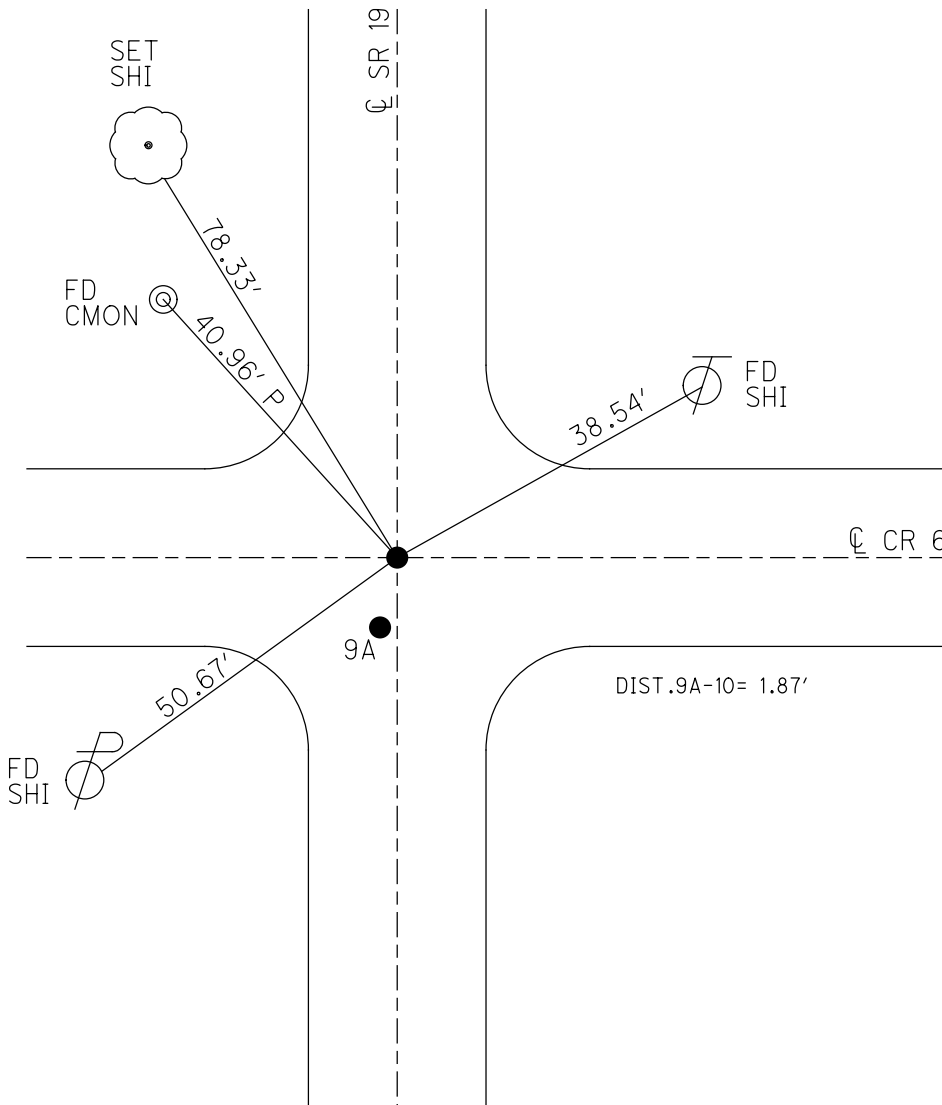
GEOID: NAVD88 12A

GRID: NORTHING: 494625.333

EASTING: 1826245.045



RECORD: P.I.
 $\Delta = 00^{\circ}50' \text{ LT}$
 STA 107+43.99
 FD P.K./WASHER
 1.5" DOWN
 ATOP BOAT SPIKE
 ATOP HARROW TOOTH
 7.75" DOWN
 1/23/84
 SET P.K./WASHER
 9/10/92, RCC
 FD P.K.NAIL
 4" DOWN
 REF10
 12/31/13, TMR
 FD P.K.NAIL
 4" DOWN
 REF10
 8/17/15, JMR
 SET MAG/WASHER
 NEWREF10
 7/15/16, JFO
 FD MAG/WASHER
 REF10
 10/29/19, JFO
 SET MAG/WASHER
 3/17/21, DSA
 FD MAG/WASHER
 8/2/21, DSA

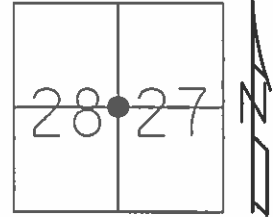


O.D.O.T. DISTRICT 2 SURVEY OFFICE (USE ONLY)

PERSONNEL _____ REFERENCE NO. 10 SHEET 13 OF 64

NOTES RHOADES DATE 08-17-2015 ROUTE SR 19
 H.C. O'DONNELL WEATHER FAIR COUNTY SENECA
 R.C. HOMAN TEMP. 82°F TOWNSHIP BLOOM
 SECTION 27 & 28
 T 1 N R 16 E

TYPE MONUMENT PK & WASHER
 ON SURFACE - ~~BELOW~~ ON
 LEFT - ☉ PAV'T - RIGHT ON
10' TO LT EDGE PAVEMENT
 S.L.M. 107+40.22



Grid: Northing: 494625.3344 Easting: 1826245.0272

RECORD P.I. 00°50' LT'
 FND PK & WASHER (1.5" BELOW)
 ATOP BOAT SPIKE ATOP
 HARROW TOOTH 107+43.99
 7.75" BELOW SURFACE
 1-23-1984

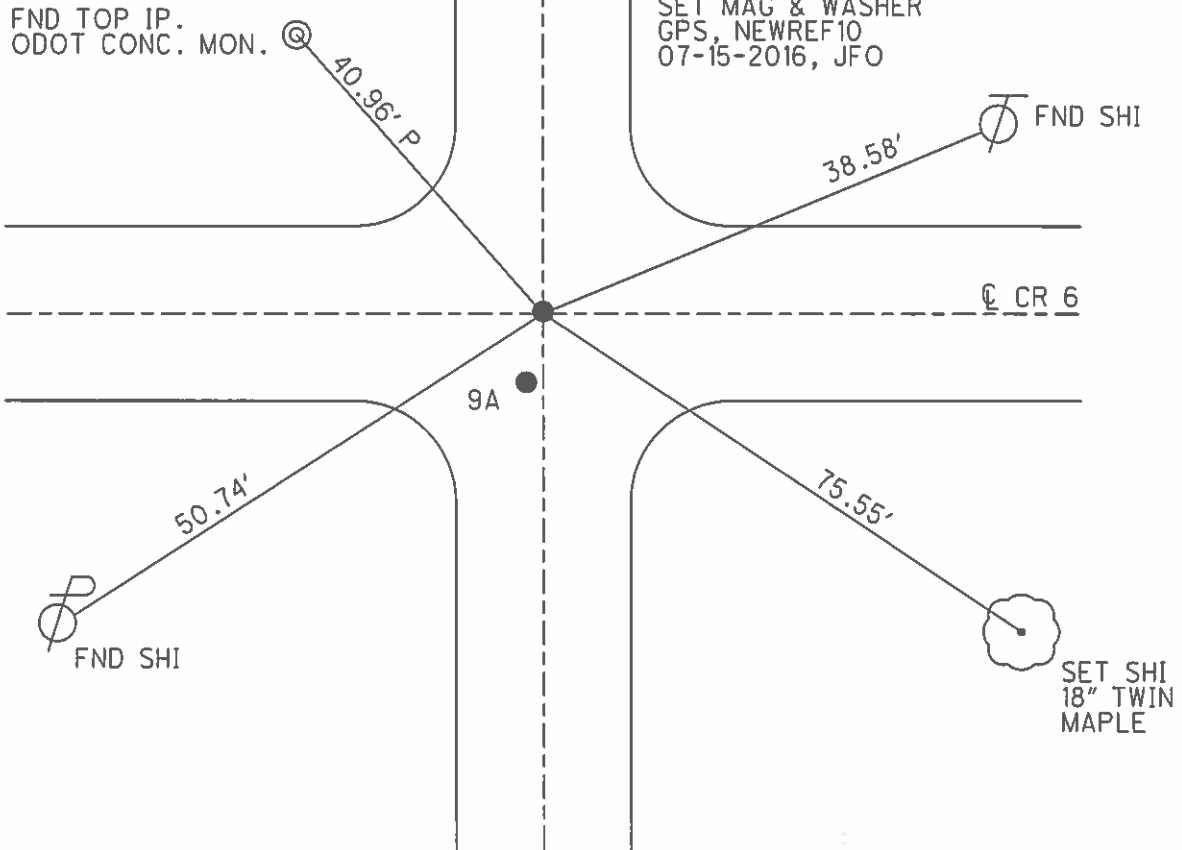
SET PK & WASHER
 09-10-1992 RCC

FND PK 4" DOWN
 GPS, REF10
 12-31-2013, TMR

GPS, REF10
 08-17-2015, JMR

SET MAG & WASHER
 GPS, NEWREF10
 07-15-2016, JFO

NOTE 1.87' BETWEEN PTS.



O.D.O.T. DISTRICT 2 SURVEY OFFICE (USE ONLY)

PERSONNEL

REFERENCE NO. 10

SHEET 13 OF 62

NOTES CANTERBURY

DATE 04-13-06

ROUTE SR 19

H.C. MICKLOVICK

WEATHER SUNNY

COUNTY SENECA

R.C. HOUDSHELL

TEMP. +62°

TOWNSHIP BLOOM

SECTION 27 & 28

T 1 N R 16 E

TYPE MONUMENT "A" = FD. PK./WASHER

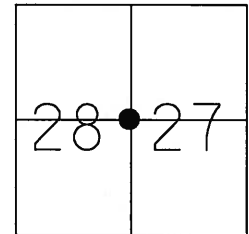
ON SURFACE - ~~BELOW~~ ON SURFACE

~~LEFT~~ - C PAV'T - ~~RIGHT~~ ON CL SR#19 (ON CL EAST)

10' TO LT. EDGE PAVEMENT

S.L.M. 107+40 (SV12)

Grid: Northing: _____ Easting: _____

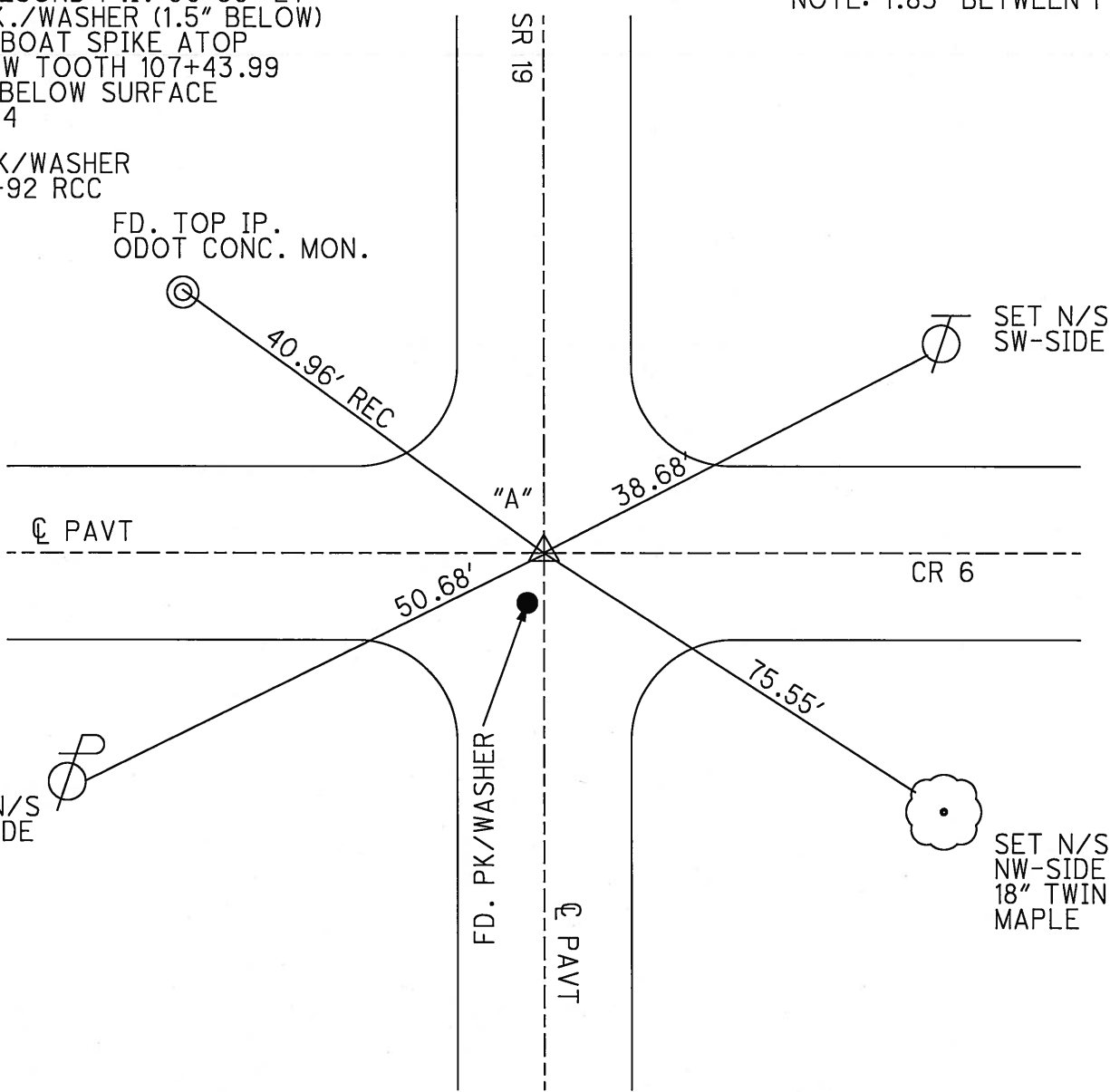


NOTE: 1.83' BETWEEN PTS.

"A" = RECORD P.I. 00°50' LT'
FD. PK./WASHER (1.5" BELOW)
ATOP BOAT SPIKE ATOP
HARROW TOOTH 107+43.99
7.75" BELOW SURFACE
1-23-84

SET PK/WASHER
09-10-92 RCC

FD. TOP IP.
ODOT CONC. MON.



SET N/S
NE-SIDE

SET N/S
NW-SIDE
18" TWIN
MAPLE

O.D.O.T. DISTRICT 2 SURVEY OFFICE

PERSONNEL

REFERENCE NO. 10

SHEET 11 OF 53

NOTES CHENEY

H.C. BARBOUR

R.C. GEYMAN

RIPPLE

DATE 6-19

DATE 9-10-1992

WEATHER SUNNY

TEMP. 75°

ROUTE #19

COUNTY SENECA

TOWNSHIP BLOOM

SECTION 21, 22, 27, 28

T. 1 N. R 16 E

TYPE MONUMENT PK/WASHERS

ON SURFACE - ~~BELOW~~ YES

LEFT - PAV'T. - ~~RIGHT~~ A ON E., B IS 0.5' LT. E.

^{A=10.0'}
^{B=9.5'} TO LT. EDGE PAVEMENT

S.L.M. 107+49

SET PK'S/WASHERS
9-10-1992
R.C.C

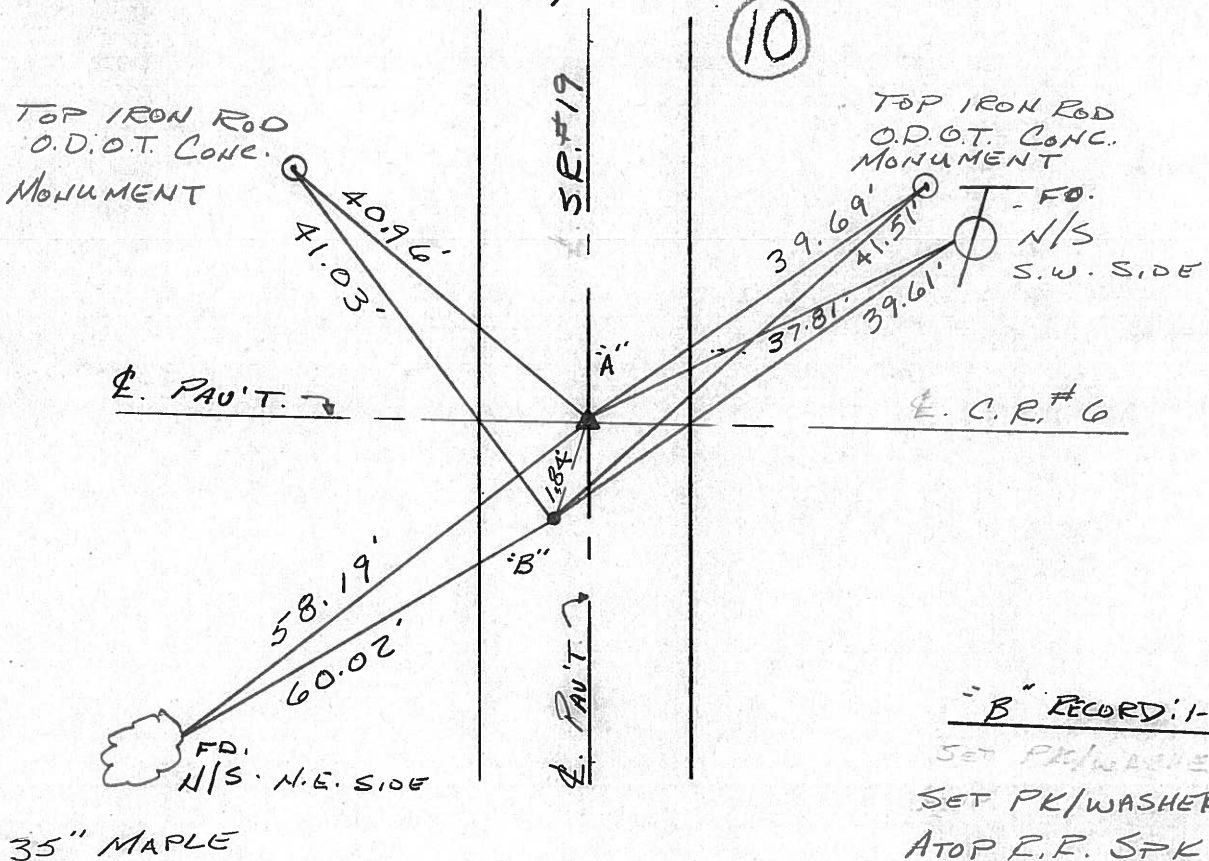
21	22
28	27



RECORD 1123/84

P.I. = 00° 50' LT. (REC.) "A" STA. 107+43.99

- FD. PK/WASHER ATOP
- PK/WASHER (1 1/2" BELOW SURFACE) ATOP
- BOAT. SPK. ATOP
- HARROW TOOTH (1 3/4" BELOW SURFACE)



"B" RECORD: 1-23-84

SET PK/WASHER
SET PK/WASHER
ATOP E.F. SPK.
ORIGIN UNKNOWN

County Seneca S.R. #19

Date 1/23/84

Township Bloom

Weather overcast

Section 21, 22, 27, 28

Temp. 17°

T/N, R/E

Personnel Cronin

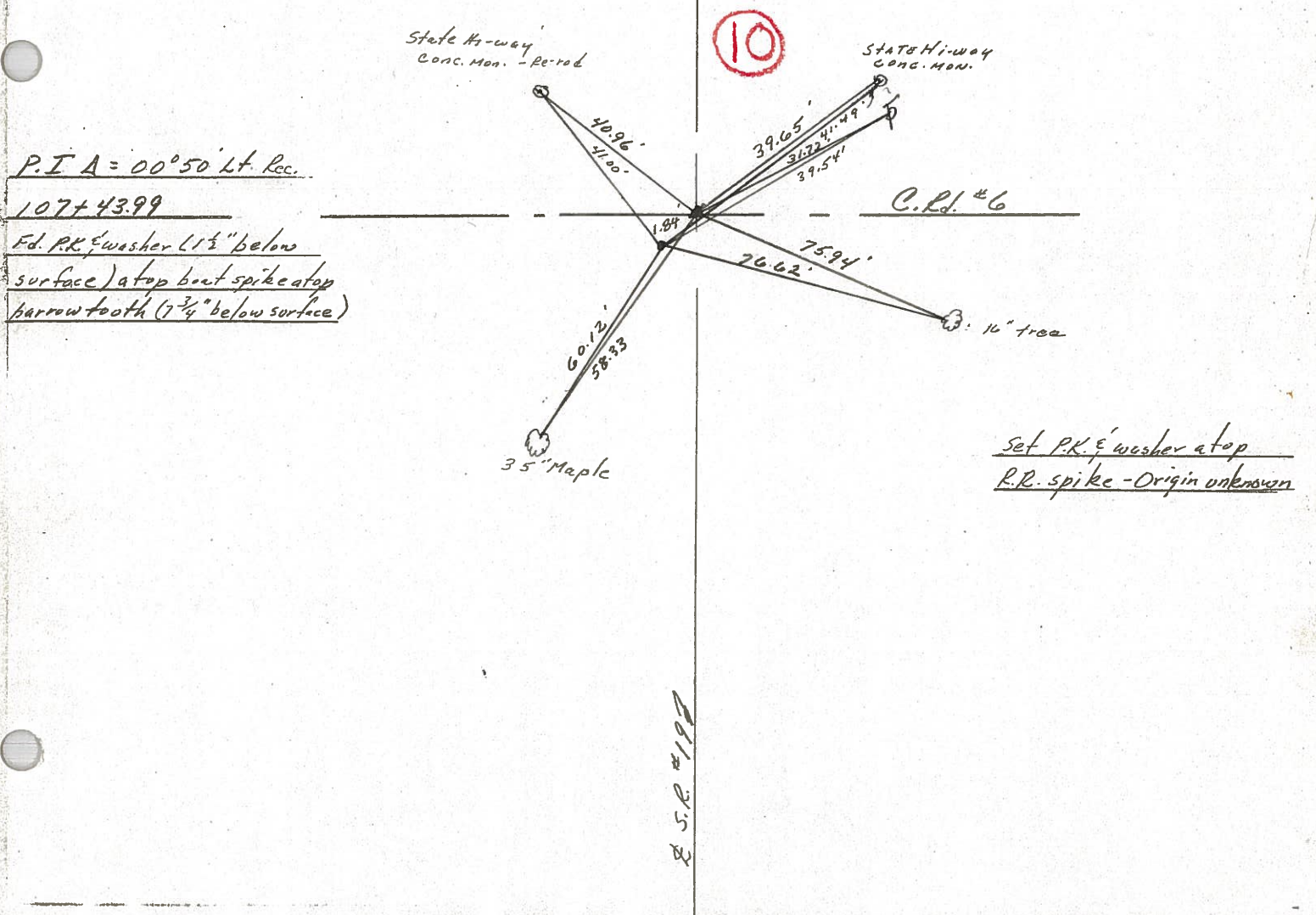
Ripple

Geyman

Barbour

10

21	22
28	27

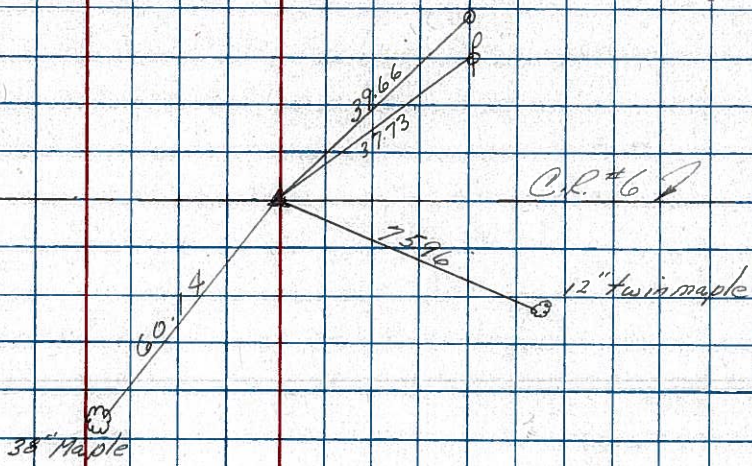


PERSONNEL	TITLE	PERSONNEL	TITLE	COUNTY	DATE
Granin				Seneca	2/08/83
Ripple				S. R. #19	WEATHER overcast
Geuman				SEC. Bridge-Sen. 19-01.97	TEMP 26°
Barbour					

DESCRIPTION Control Point Ties & Alignment JOB NO. _____

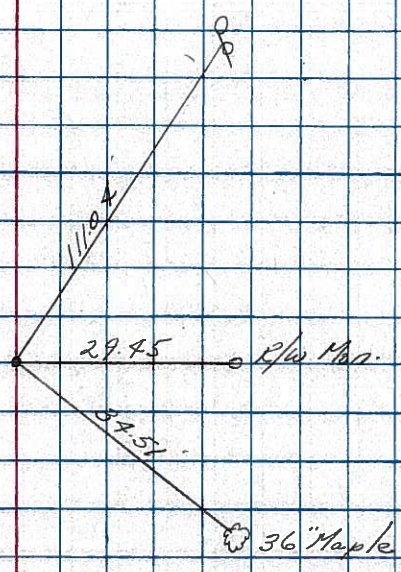
10

P.I.
 10744260 (this survey using
 104+01.60 as stationing for
 rear abut - Bridge 01.97 SLM)
 107443 = Sta. of 1936 Plans



9

P.O.T
 94+00
 Fd boat spike 1" below
 surface - Harrow tooth 5"
 below



County SENECA S.R. 19 - Sec. G

Date 7/5/79

Township BLOOM

Weather sunny

Section Corner 21, 22, 27, 28

Temp. 68°

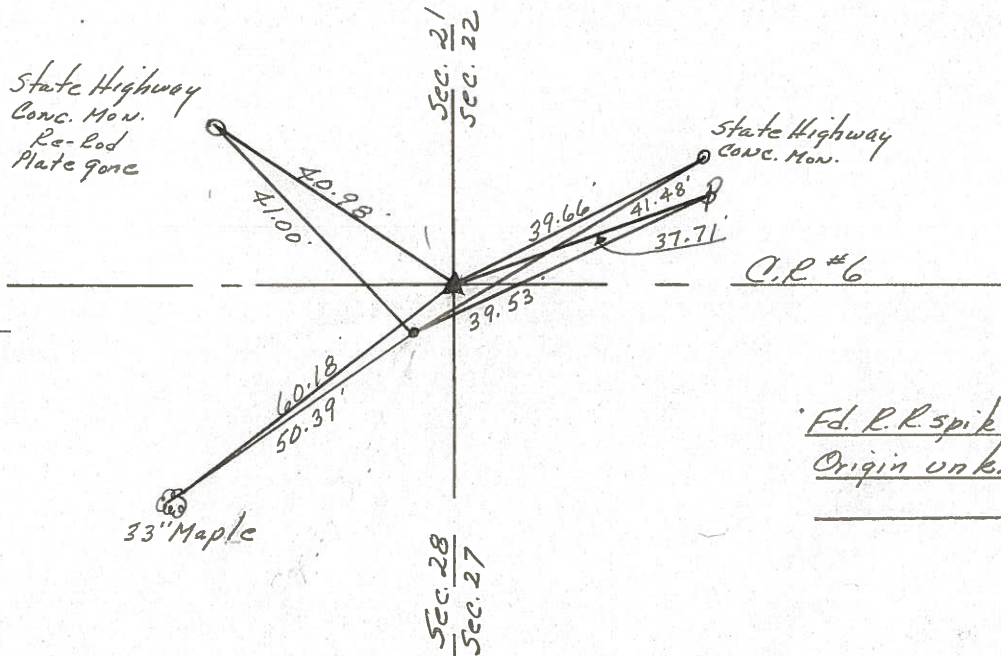
T/LN, R/L/E

Personnel Cronin
Ripple
Geyman

21	22
28	27



10



$\Delta = 00^{\circ}50'$ Lt. Rec.
 P.I.
 107+43.99
 set P.K. & washer atop bolt
 spike, atop harrow tooth
 6 7/8" ± below surface

C.R. #6

Fd. R.R. spike on surface
 Origin unknown

S.R. #19

PERSONNEL TITLE PERSONNEL TITLE
 Ash _____
 Cronin _____
 Rippe _____
 Anderson _____

COUNTY *Seneca*

DATE checked *11/3/72*

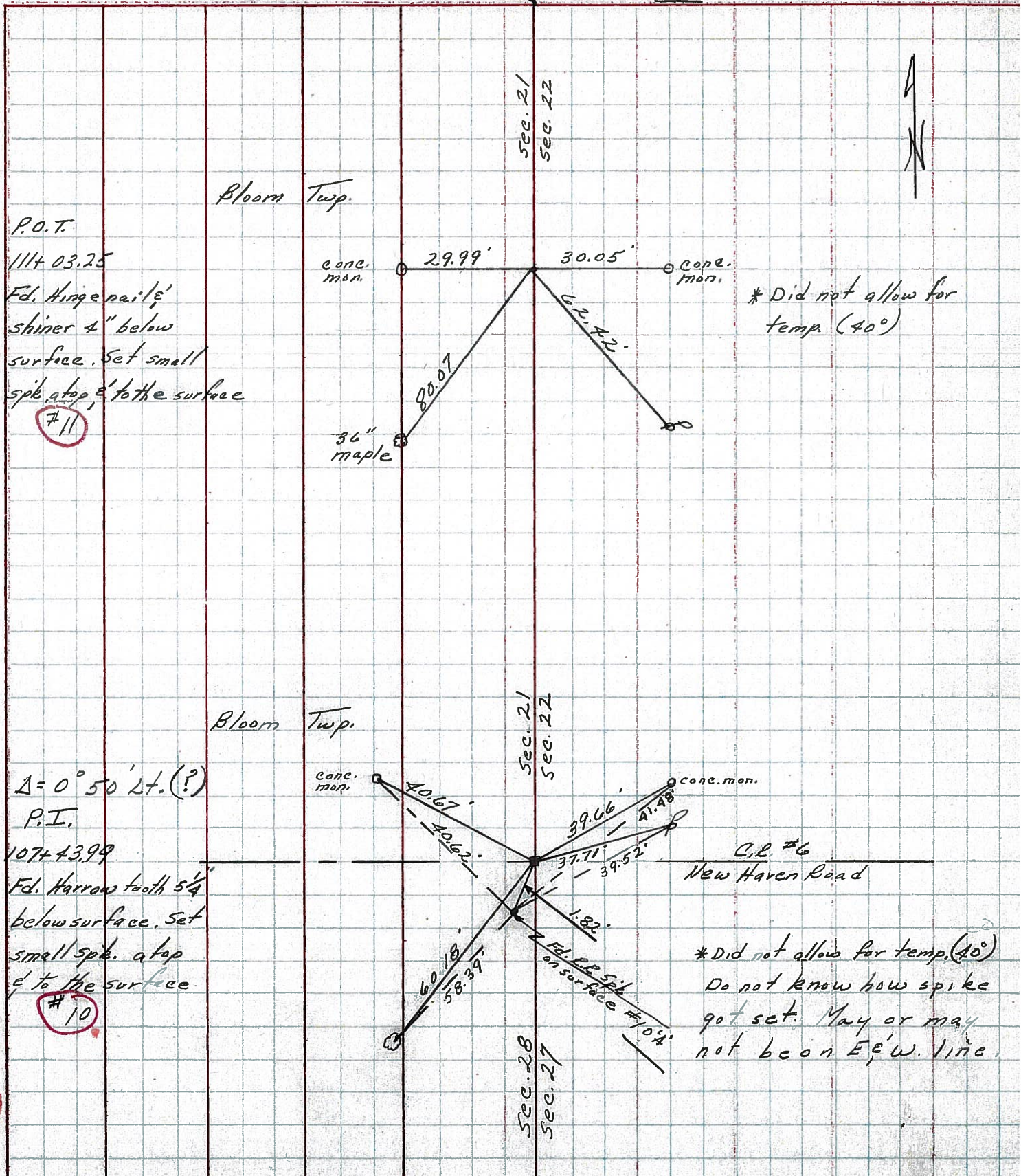
S. R. *19*

WEATHER _____

SEC. *6*

TEMP. *40°*

DESCRIPTION *Ties for Control Points Sen. Co. Line - North to Bloomville* JOB NO. _____



P.O.T.
 1114 03.25
 Fd. Harrow nail &
 shiner 4" below
 surface. Set small
 spike atop & to the surface
 #11

* Did not allow for temp. (40°)

$\Delta = 0^\circ 50' \text{ Lt. (?)}$
 P.I.
 1074 43.99
 Fd. Harrow tooth $5\frac{1}{4}$ "
 below surface. Set
 small spike atop
 & to the surface.
 #10

* Did not allow for temp. (40°)
 Do not know how spike
 got set. May or may
 not be on E-W. line.

9-A

PERSONNEL	TITLE	PERSONNEL	TITLE
MOSSE			
BARBOUR			
Redding			
Potts			

COUNTY Seneca DATE 11-18-68
 S. R. # 19 WEATHER cloudy-cold
 SEC. 6 TEMP. 37°

DESCRIPTION TIES FOR CONTROL POINTS-SEN CO LINE TO BLOOMVILLE JOB NO. _____
 LEFT CENTER LINE RIGHT

