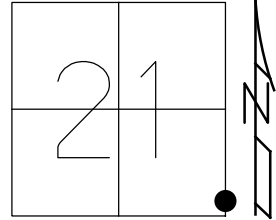


O.D.O.T. DISTRICT 2 SURVEY OFFICE (USE ONLY)

PERSONNEL _____ REFERENCE NO. 11 SHEET 14 OF 64
 NOTES AUBLE DATE 3/17/21 ROUTE SR 19
 H.C. NIESE WEATHER FAIR COUNTY SENECA
 R.C. AUBLE TEMP. 39° TOWNSHIP BLOOM
 DWG BY NIESE PID 102934 SECTION 21
 T 1 N R 16 E

TYPE MONUMENT MAG/WASHER
 ON SURFACE - ~~BELOW~~ ON
 OFFSET 0.2' LT : ~~RT~~
9.8' TO RT EDGE PAVEMENT
 STATION: 111+01.289

HORIZ.DATUM: NAD83(2011) GEOID: NAVD88 12A
 GRID: NORTHING: 494984.460 EASTING: 1826243.704



FD DESTROYED
 ODOT CONC. MON
 BENT DISK

⊙ 29.97' REC



SET SHI
 MULTI TRUNK

47.06'

88.73'



FD
 SHI

SR 19



64.34'



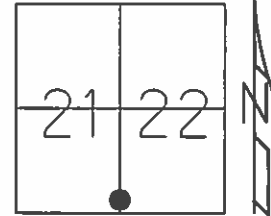
FD
 SHI

RECORD: P.O.T.
 STA 111+03.25
 SET P.K./WASHER
 ATOP P.K./WASHER
 ATOP BOAT SPIKE
 ATOP HINGE NAIL
 8" DOWN
 1/23/84
 SET P.K./WASHER
 9/10/92, RCC
 FD P.K./WASHER
 REF11
 12/31/13, TMR
 8/18/15, JMR
 SET MAG/WASHER
 NEWREF11
 7/19/16, JFO
 FD MAG/WASHER
 3/17/21, DSA
 8/2/21, DSA

O.D.O.T. DISTRICT 2 SURVEY OFFICE (USE ONLY)

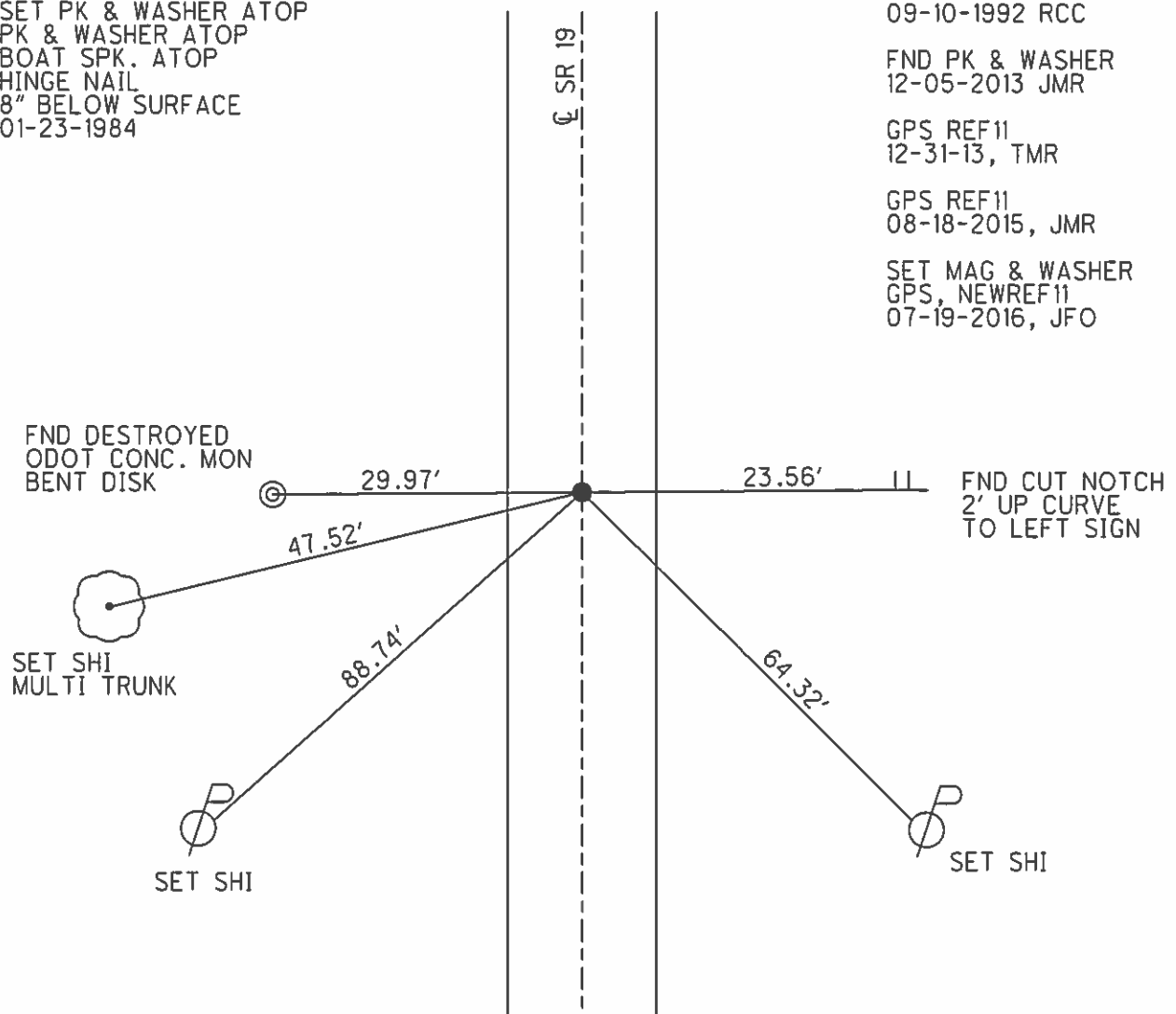
PERSONNEL _____ REFERENCE NO. 11 SHEET 14 OF 64
 NOTES RHOADES DATE 08-18-2015 ROUTE SR 19
 H.C. O'DONNELL WEATHER CLOUDY COUNTY SENECA
 R.C. HOMAN TEMP. 74°F TOWNSHIP BLOOM
 _____ SECTION 21 & 22
 _____ T 1 N R 16 E

TYPE MONUMENT PK & WASHER
 ON SURFACE - ~~BELOW~~ ON
 LEFT - ☉ PAV'T - ~~RIGHT~~ 0.2'
9.8' TO RT EDGE PAVEMENT
 S.L.M. 110+99.34
 Grid: Northing: 494984.4603 Easting: 1826243.7040



RECORD P.O.T. STA 111+03.25
 SET PK & WASHER ATOP
 PK & WASHER ATOP
 BOAT SPK. ATOP
 HINGE NAIL
 8" BELOW SURFACE
 01-23-1984

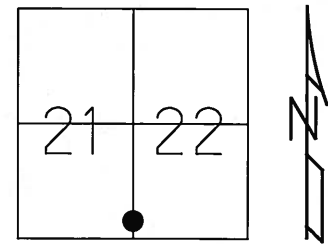
SET PK WASHER
 09-10-1992 RCC
 FND PK & WASHER
 12-05-2013 JMR
 GPS REF11
 12-31-13, TMR
 GPS REF11
 08-18-2015, JMR
 SET MAG & WASHER
 GPS, NEWREF11
 07-19-2016, JFO



O.D.O.T. DISTRICT 2 SURVEY OFFICE (USE ONLY)

PERSONNEL _____ REFERENCE NO. 11 SHEET 14 OF 62
 NOTES CANTERBURY DATE 04-13-06 ROUTE SR 19
 H.C. MICKLOVICK WEATHER SUNNY COUNTY SENECA
 R.C. HOUDSHELL TEMP. +62° TOWNSHIP BLOOM
 _____ SECTION 21 & 22
 _____ T 1 N R 16 E

TYPE MONUMENT FD. PK./WASHER
 ON SURFACE - ~~BELOW~~ ON SURFACE
 LEFT - ~~C PAV'T~~ - RIGHT 0.2' LT.
9.8' TO RT. EDGE PAVEMENT
 S.L.M. 111+01 (SV14)

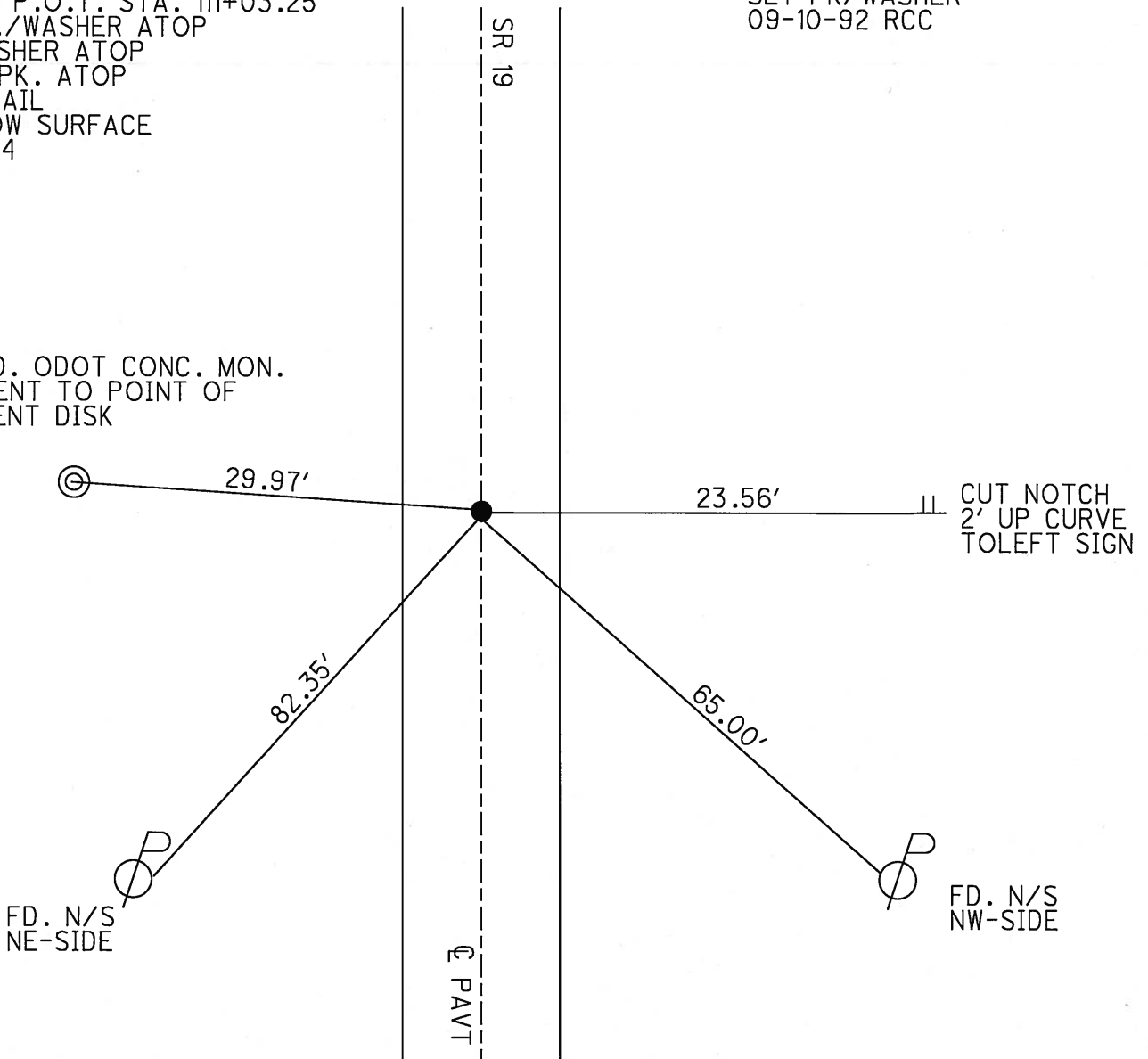


Grid: Northing: _____ Easting: _____

RECORD P.O.T. STA. 111+03.25
 SET PK./WASHER ATOP
 PK./WASHER ATOP
 BOAT SPK. ATOP
 HINGE NAIL
 8" BELOW SURFACE
 01-23-84

SET PK/WASHER
 09-10-92 RCC

FD. ODOT CONC. MON.
 WENT TO POINT OF
 BENT DISK



O.D.O.T. DISTRICT 2 SURVEY OFFICE

PERSONNEL

REFERENCE NO. 11

SHEET 12 OF 53

NOTES CHENEY

6-22-1992

H.C. BARBOUR

DATE 9-10-1992

ROUTE #19

R.C. GEYMAN

WEATHER SUNNY

COUNTY SENECA

RIPPLE

TEMP. 75° 62°

TOWNSHIP BLOOM

SECTION 21 & 22

T. 1 N. R 16 E

TYPE MONUMENT PK/WASHER

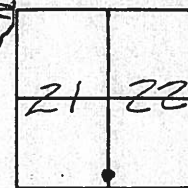
SET PK/WASHER
9-10-1992
R.C.C.

ON SURFACE - ~~BELOW~~ YES

~~LEFT - & PAV'T. - RIGHT~~ ON

10.0' TO RT. EDGE PAVEMENT

S.L.M. 111+09



P.O.T. RECORD: 1/23/84 STA. 111+03.25

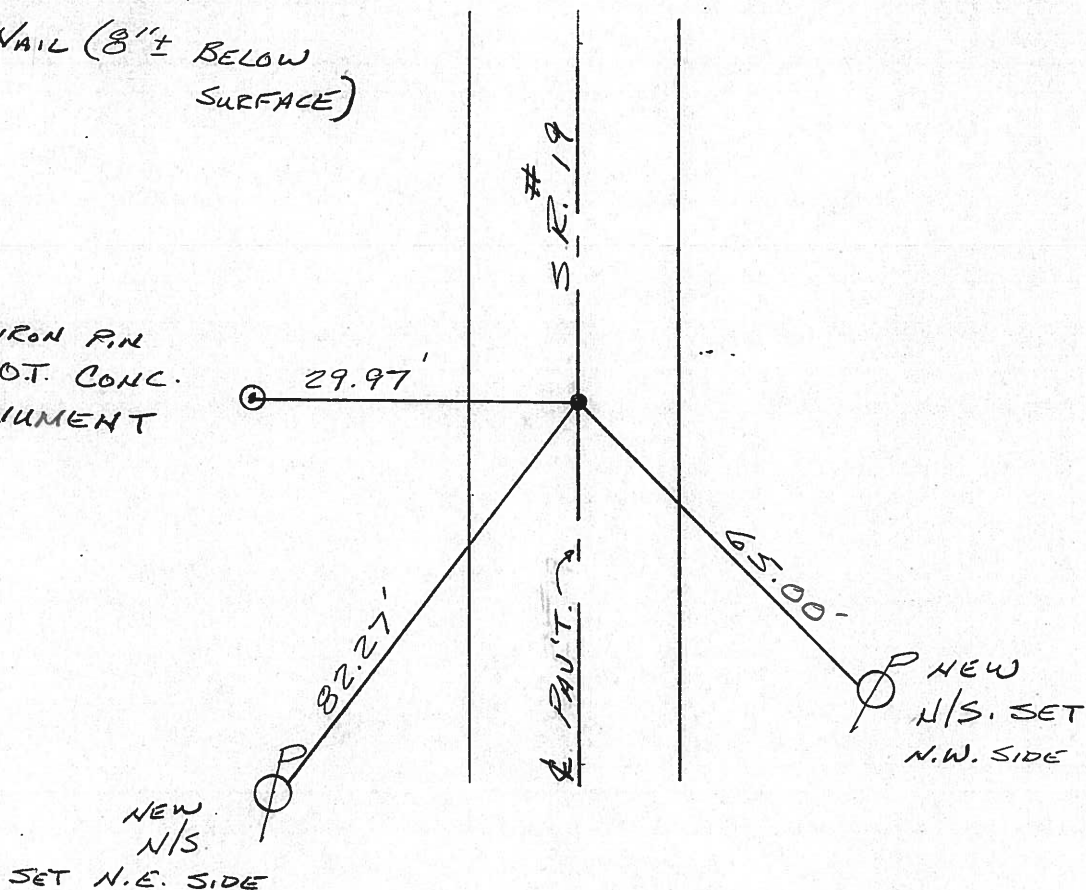
SET PK/WASHER ATOP

PK/WASHER ATOP

BOAT SPK. ATOP

HINGE NAIL (8" ± BELOW SURFACE)

TOP IRON PIN
O.D.O.T. CONC.
MONUMENT



County Seneca S.R. #19

Township Bloom

Section 21 & 22

T 1 N, R 16 E

Personnel Cronin

Ripple

Geyman

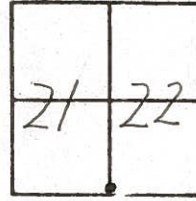
Barbour

(11)

Date 1/23/84

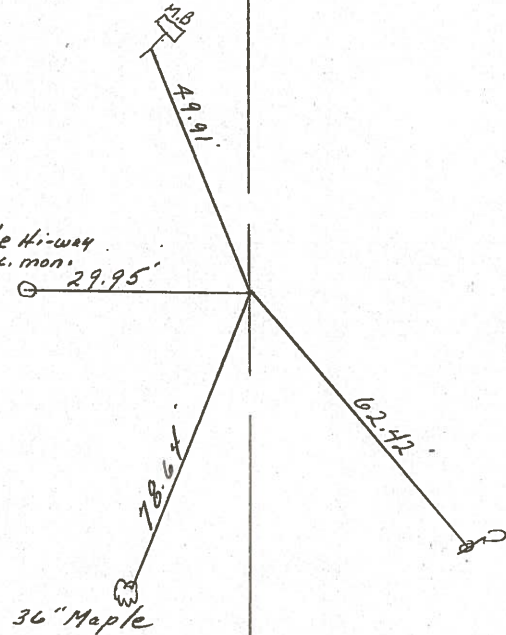
Weather overcast

Temp. 20°



P.O.T.
11/103.25
Set P.K. & washer atop boat
spike atop hinge nail (6 1/2"
below surface).

State Hi-way
 Conc. mon. 29.95'



S.R. #19

County SENECA S.R. 19 - Sec. 6

Date 7/12/79

Township BLOOM

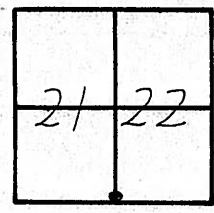
Weather hazy - humid

Section E. Line 21 & W. Line 22

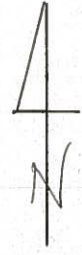
Temp. 80°

T/N, R/E

Personnel Cronin
Ripple
Geuman

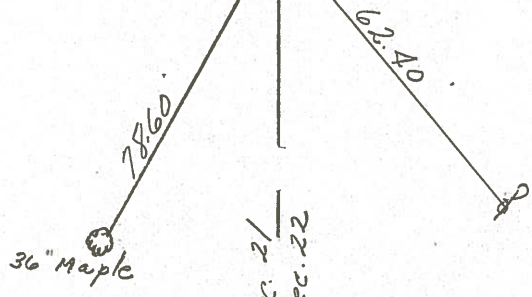


②



P.O.T
111+03.25
Fd. bolt spike 1" below
surface. Hinge nail & shiner
below & 5" below surface

State Highway 29.95' 30.05' State Highway
Conc. Mon. Conc. Mon.



Sec. 21
Sec. 22
S.R. 19

PERSONNEL TITLE PERSONNEL TITLE
 Ash
 Cronin
 Ripple
 Anderson

COUNTY Seneca

DATE checked 11/3/72

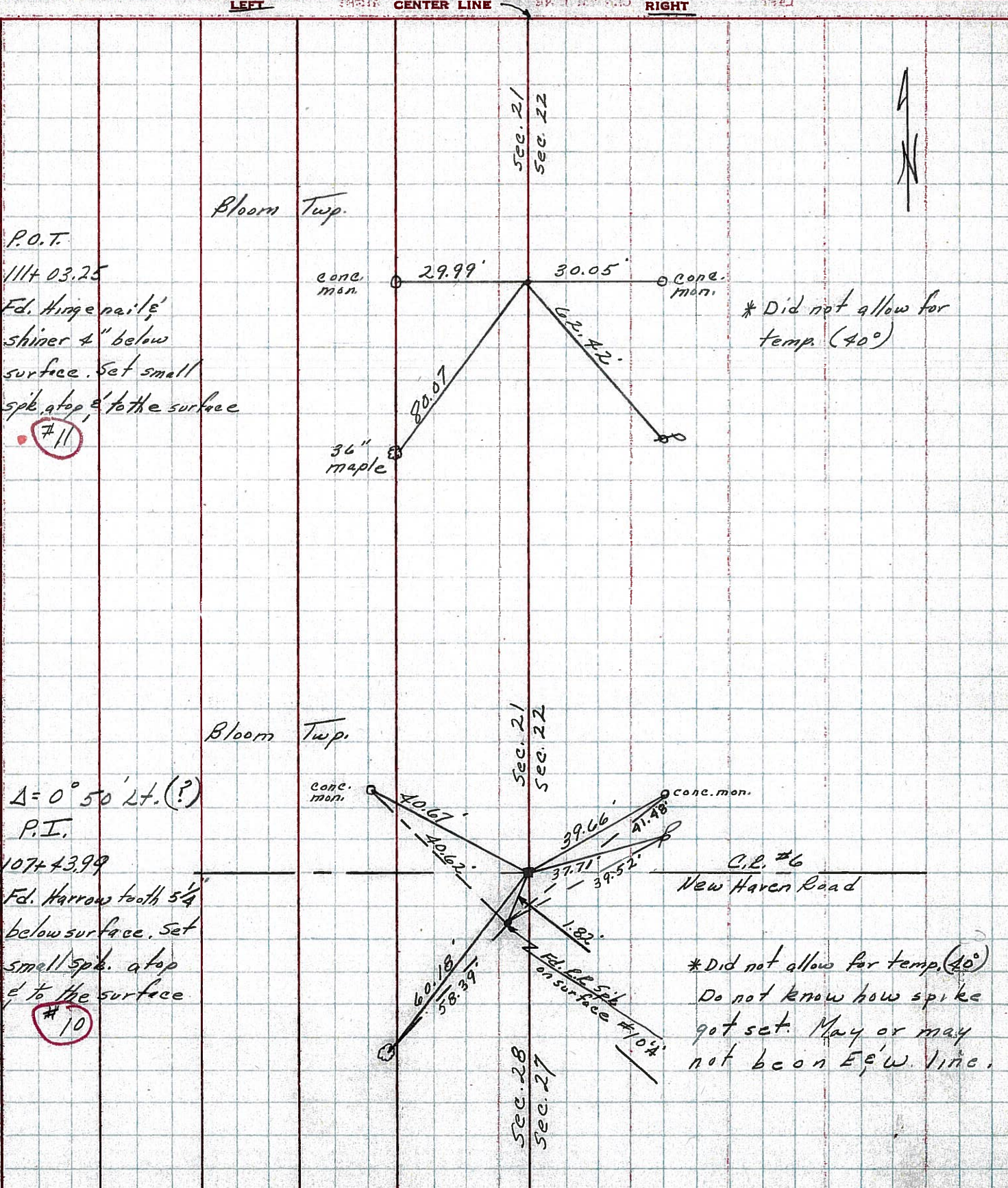
S. R. 9

WEATHER

SEC. 21

TEMP. 40°

DESCRIPTION Tics for Control Points - Sen. Co. Line North to Bloomville



P.O.T.
 1114 03.25
 Fd. Hinge nails,
 shiner 4" below
 surface. Set small
 spk. atop & to the surface

#11

* Did not allow for temp. (40°)

$\Delta = 0^\circ 50' Lt. (?)$

P.I.
 1074 43.99
 Fd. Harrow tooth 5 1/4"
 below surface. Set
 small spk. atop
 & to the surface

#10

* Did not allow for temp. (40°)
 Do not know how spike
 got set. May or may
 not be on E-W line.

9-A