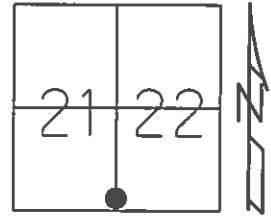


O.D.O.T. DISTRICT 2 SURVEY OFFICE (USE ONLY)

PERSONNEL _____ REFERENCE NO. 12 SHEET 15 OF 64
 NOTES RHOADES DATE 08-18-2015 ROUTE SR 19
 H.C. O'DONNELL WEATHER CLOUDY COUNTY SENECA
 R.C. RHOADES TEMP. 74°F TOWNSHIP BLOOM
 _____ SECTION 21 & 22
 _____ T 1 N R 16 E

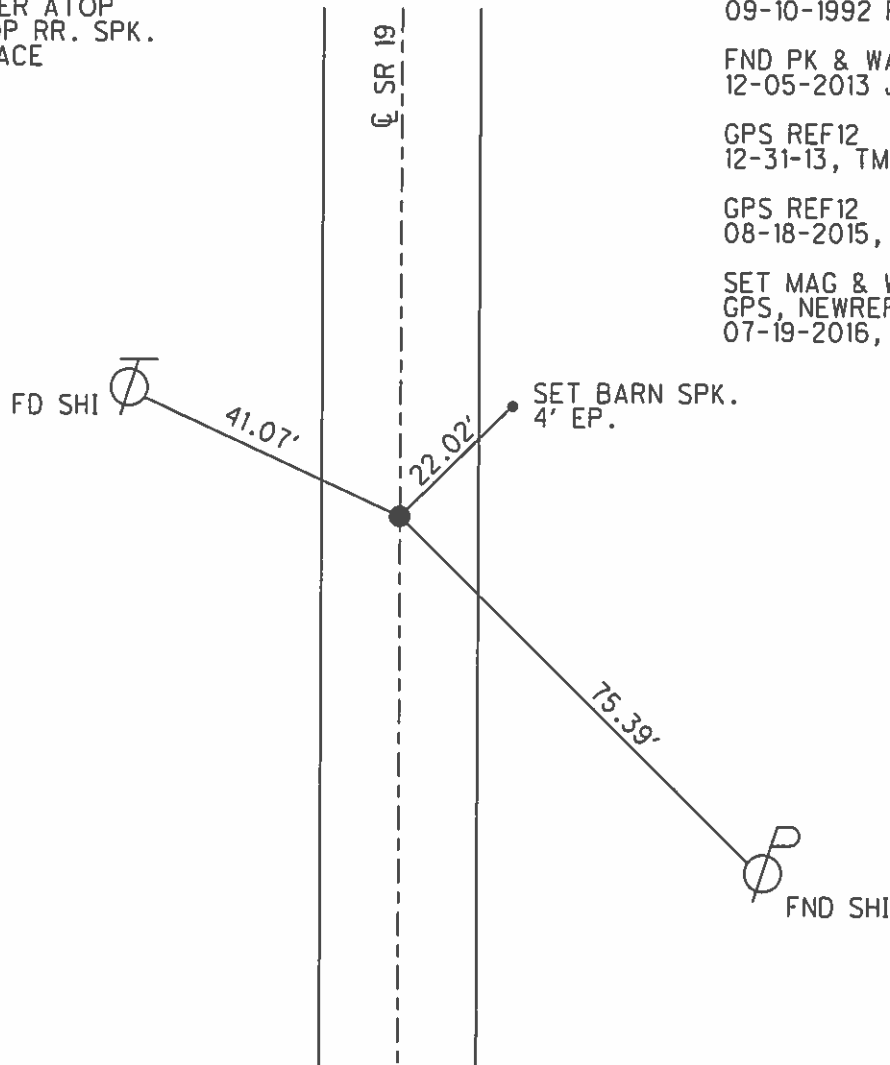
TYPE MONUMENT PK & WASHERS
 ON SURFACE - ~~BELOW~~ ON
 LEFT - ☉ PAV'T - ~~RIGHT~~ Y'
9.8' TO LT EDGE PAVEMENT
 S.L.M. 116+02.01



Grid: Northing: 495487.1211 Easting: 1826241.4990

RECORD P.C. STA 116+05.50
 SET PK & WASHER ATOP
 BOAT SPK. ATOP RR. SPK.
 8" BELOW SURFACE
 01-23-1984

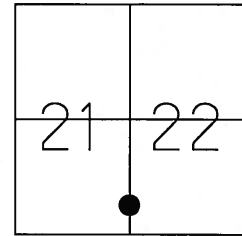
SET PK WASHER
 09-10-1992 RCC
 FND PK & WASHER
 12-05-2013 JMR
 GPS REF12
 12-31-13, TMR
 GPS REF12
 08-18-2015, JMR
 SET MAG & WASHER
 GPS, NEWREF12
 07-19-2016, JFO



O.D.O.T. DISTRICT 2 SURVEY OFFICE (USE ONLY)

PERSONNEL _____ REFERENCE NO. 12 SHEET 15 OF 62
 NOTES CANTERBURY DATE 04-13-06 ROUTE SR 19
 H.C. MICKLOVICK WEATHER SUNNY COUNTY SENECA
 R.C. HOUDSHELL TEMP. +62° TOWNSHIP BLOOM
 _____ SECTION 21 & 22
 _____ T 1 N R 16 E

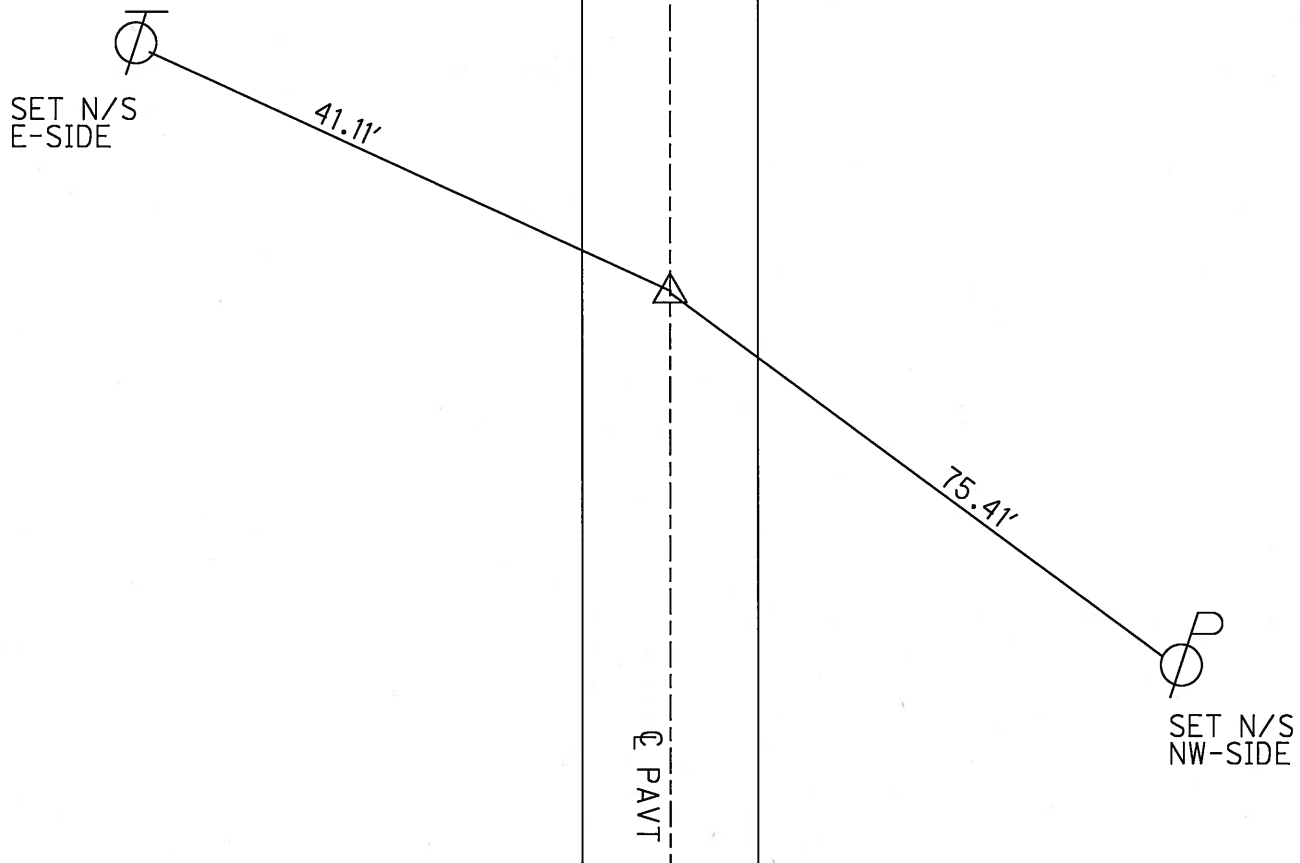
TYPE MONUMENT FD. PK./WASHER
 ON SURFACE - ~~BELOW~~ ON SURFACE
 LEFT - C PAV'T - ~~RIGHT~~ 1' LT.
9.8' TO LT. EDGE PAVEMENT
 S.L.M. 116+03 (SV15)



Grid: Northing: _____ Easting: _____

RECORD P.C. STA. 116+05.50
 SET PK./WASHER ATOP
 BOAT SPK. ATOP RR. SPK.
 8" BELOW SURFACE
 01-23-84

SET PK./WASHER
 09-10-92 RCC



O.D.O.T. DISTRICT 2 SURVEY OFFICE

PERSONNEL

REFERENCE NO. 12

SHEET 13 OF 53

NOTES CHENEY

6-22-92

H.C. BARBOUR

DATE 7-10-1992

ROUTE #19

R.C. GEYMAN

WEATHER SUNNY

COUNTY SENECA

RIPPLE

TEMP. 75° 62°

TOWNSHIP BLOOM

SECTION 21 & 22

T. 1 N. R 16 E

TYPE MONUMENT P.K./WASHER

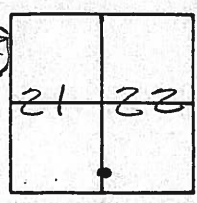
ON SURFACE - BELOW YES

LEFT - CL PAV'T. - RIGHT 1'

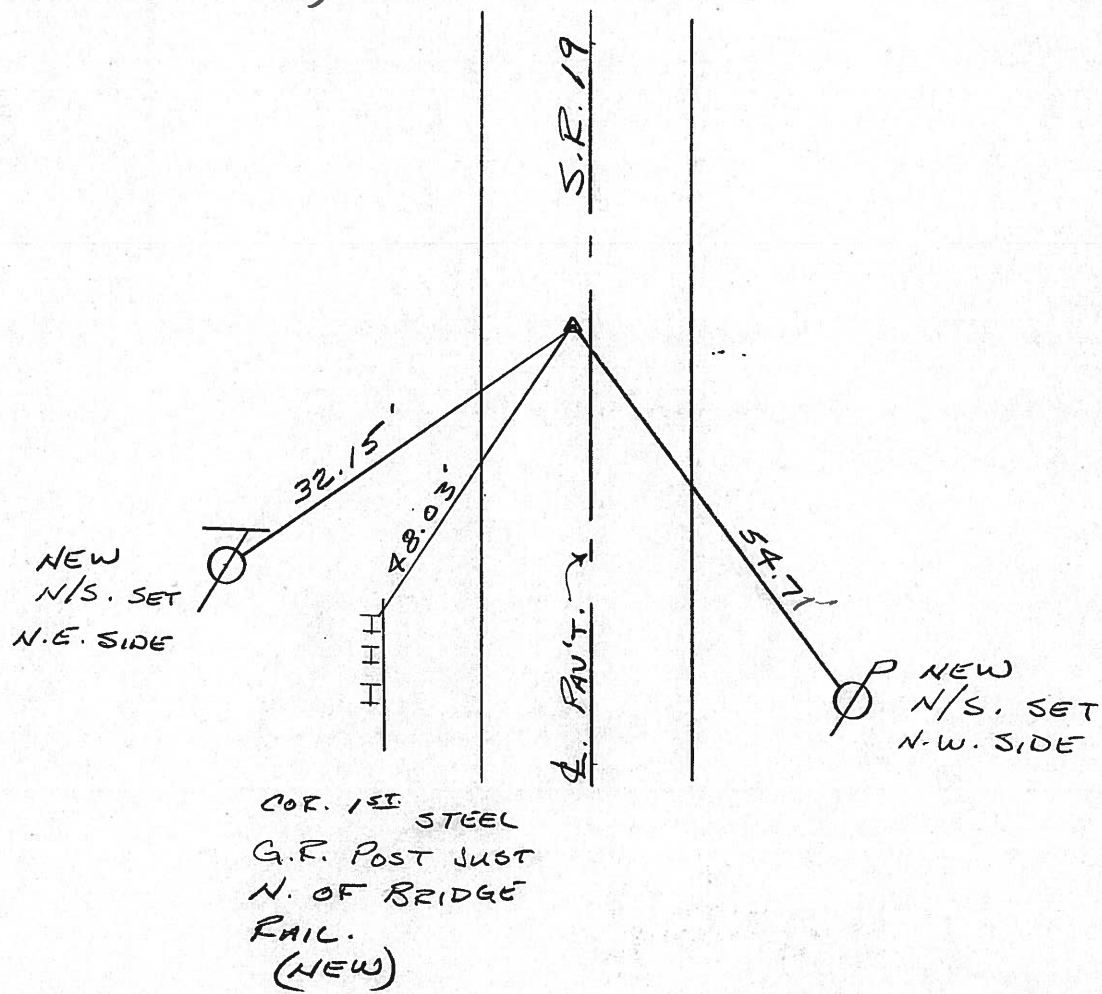
9.0' TO LT. EDGE PAVEMENT

S.L.M. 116+12

SET P.K./WASHER
9-10-1992
R.C.C.



RECORD: 1/23/84
STA. 116+05.50 (P.C.)
SET P.K./WASHER ATOP
BOAT SPR. ATOP R.R.
SPK. (8" BELOW SURFACE)



County Seneca S.R. #19

Date 1/23/84

Township Bloom

Weather overcast

Section 21, 22

Temp. 20°

T₁N, R₁₆E

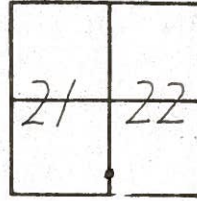
Personnel Aronin

Ripple

Geyman

Barbour

12



P.C.
116+05.50
Set P.K. washer at top boat
spike at top L.R. spike (8"
below surface)

State Hi-way
 conc mon.
 Re-Rod

29.59'

49.10'

54.70'

N&S in
 face of bridge
 rail



S. R. # 19

County SENECA S.R. 19 - Sec. G

Date 7/12/79

Township BLOOM

Weather hazy - humid

Section E. Line 21, E. W. Line 22

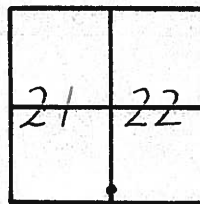
Temp. 80°

T 1 N, R 16 E

Personnel Cronin

Ripple

Geyman



12

P.C.
116 + 05.50
Fd. bolt spike 1" below
surface. R.L. spike below
± 6 1/2" below surface

State Highway
 Conc. Mon. 29.66
 (leaning)

Nail & shiner
 END of Bridge
 Rail

49.10'

56.47'

Sec. 21
Sec. 22

S. R. # 19



PERSONNEL	TITLE	PERSONNEL	TITLE	COUNTY	Seneca	DATE	11/1/72
Ash				S. R.	#19	WEATHER	cloudy
Cranin				SEC.		TEMP.	40°
Lippie				DESCRIPTION <u>Ties for Control Points - Sen. Co. Line - North to Bloomville</u>			
Anderson				JOB NO.			

