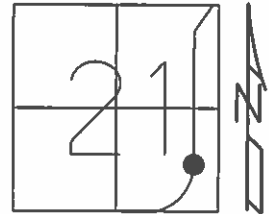


O.D.O.T. DISTRICT 2 SURVEY OFFICE (USE ONLY)

PERSONNEL	REFERENCE NO.	<u>14</u>	SHEET	<u>17</u>	OF	<u>64</u>
NOTES	<u>RHOADES</u>	DATE	<u>08-18-2015</u>	ROUTE	<u>SR 19</u>	
H.C.	<u>O'DONNELL</u>	WEATHER	<u>CLOUDY</u>	COUNTY	<u>SENECA</u>	
R.C.	<u>RHOADES</u>	TEMP.	<u>74°F</u>	TOWNSHIP	<u>BLOOM</u>	
				SECTION	<u>21</u>	
				T	<u>1</u>	R
					<u>N</u>	<u>16</u>
				E		

TYPE MONUMENT PK & WASHER  
 ON SURFACE - ~~BELOW~~ ON  
 LEFT - CL PAV'T - ~~RIGHT~~ 0.2'  
10.0' TO RT EDGE PAVEMENT  
 S.L.M. 118+14.79



Grid: Northing: 495698.7458 Easting: 1826224.8976

RECORD P.I. 08°30' LT  
 STA. 117+11.97, SET PK ATOP  
 BOAT SPK. ATOP  
 HARROW TOOTH  
 7" BELOW SURFACE  
 TANGENT = 106.47  
 01-23-1984

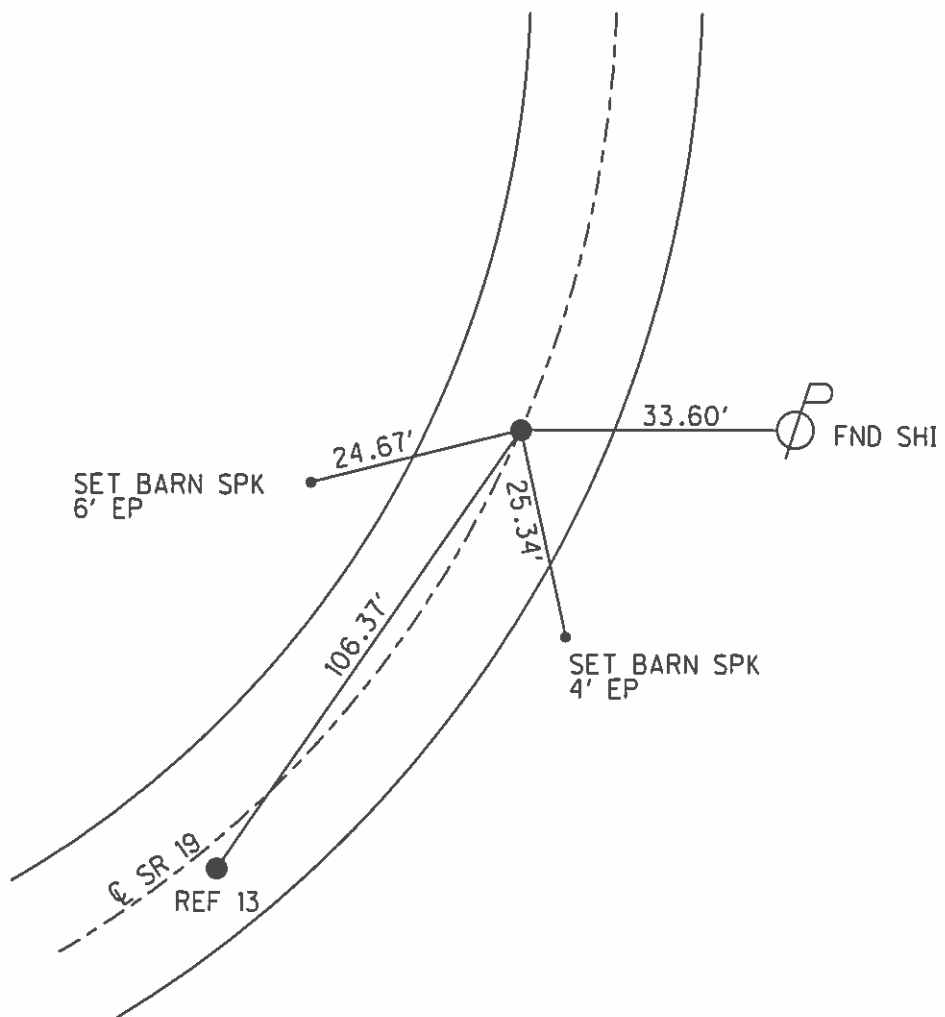
SET PK WASHER  
 09-10-1992 RCC

FND PK & WASHER  
 12-05-2013 JMR

GPS REF13  
 12-31-13, TMR

GPS REF13  
 08-18-2015, JMR

SET MAG & WASHER  
 GPS, NEWREF13  
 07-19-2016, JFO



O.D.O.T. DISTRICT 2 SURVEY OFFICE (USE ONLY)

PERSONNEL \_\_\_\_\_

REFERENCE NO. 14

SHEET 17 OF 62

NOTES CANTERBURY

DATE 04-13-06

ROUTE SR 19

H.C. MICKLOVICK

WEATHER SUNNY

COUNTY SENECA

R.C. HOUDSHELL

TEMP. +65°

TOWNSHIP BLOOM

SECTION 21

T 1 N R 16 E

TYPE MONUMENT FD. PK./WASHER

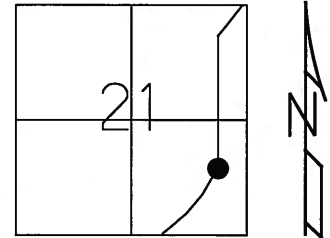
ON SURFACE - ~~BELOW~~ ON SURFACE

LEFT - ~~C PAV'T~~ - RIGHT 0.2' LT.

10.0' TO RT. EDGE PAVEMENT

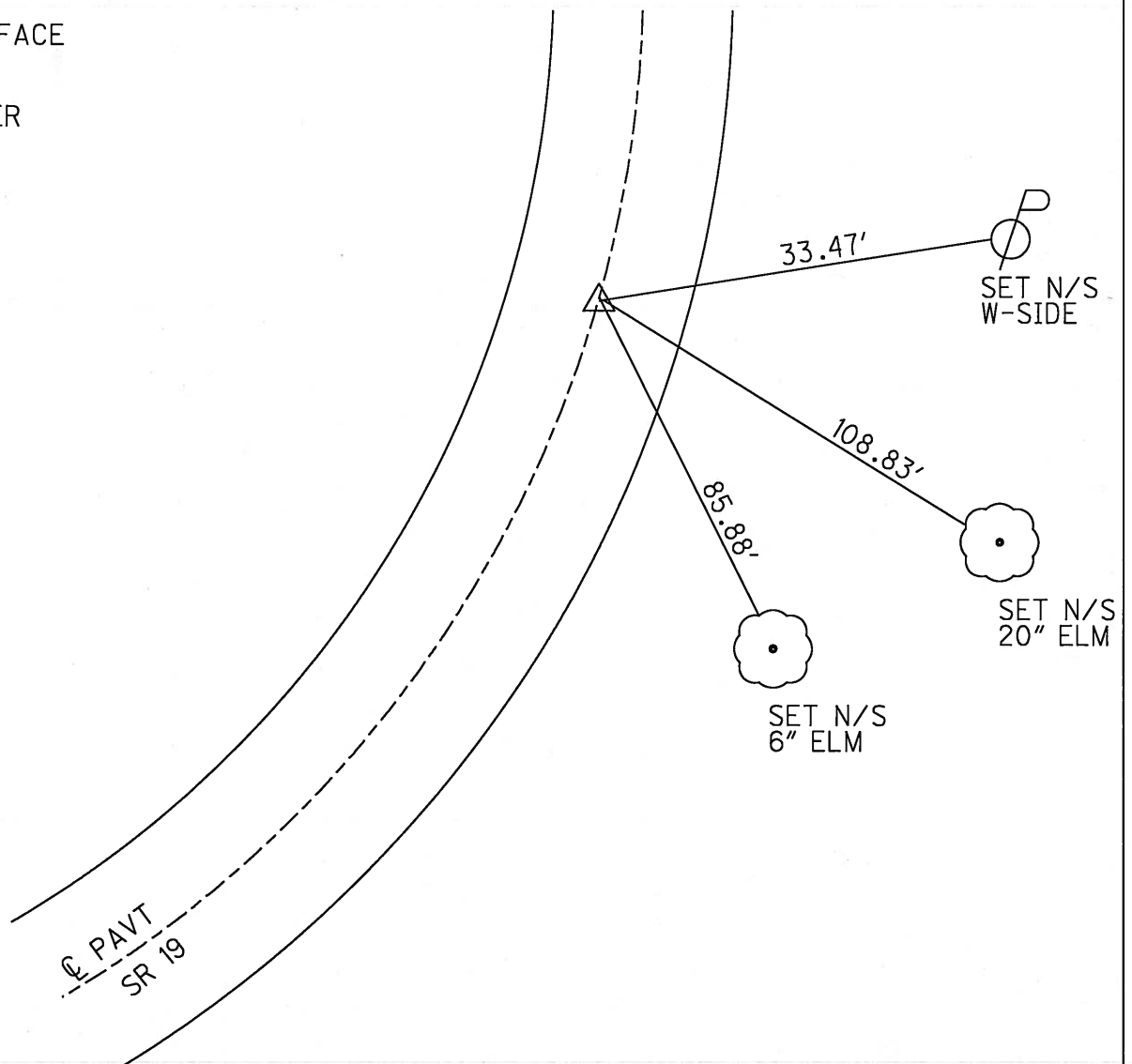
S.L.M. 118+16 (SV17)

Grid: Northing: \_\_\_\_\_ Easting: \_\_\_\_\_



RECORD P.T. 118+18.03  
 SET PK./WASHER ATOP  
 BOAT SPK. ATOP  
 RR SPK.  
 7" BELOW SURFACE  
 01-23-84

SET PK/WASHER  
 09-10-92 RCC



# O.D.O.T. DISTRICT 2 SURVEY OFFICE

PERSONNEL

REFERENCE NO. 14

SHEET 15 OF 53

NOTES RIAPLE

H.C. BARBOUR

DATE 6-22-1992

ROUTE # 19

R.C. CHENEY

WEATHER CLOUDY

COUNTY SENECA

GEYMAN

TEMP. 65°

TOWNSHIP BLOOM

SECTION 21

T. N R. 16 E

TYPE MONUMENT PK/WASHER

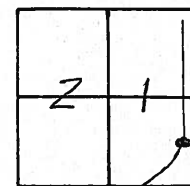
ON SURFACE - BELOW YES

~~LEFT~~ - C PAV'T. - ~~RIGHT~~ ON

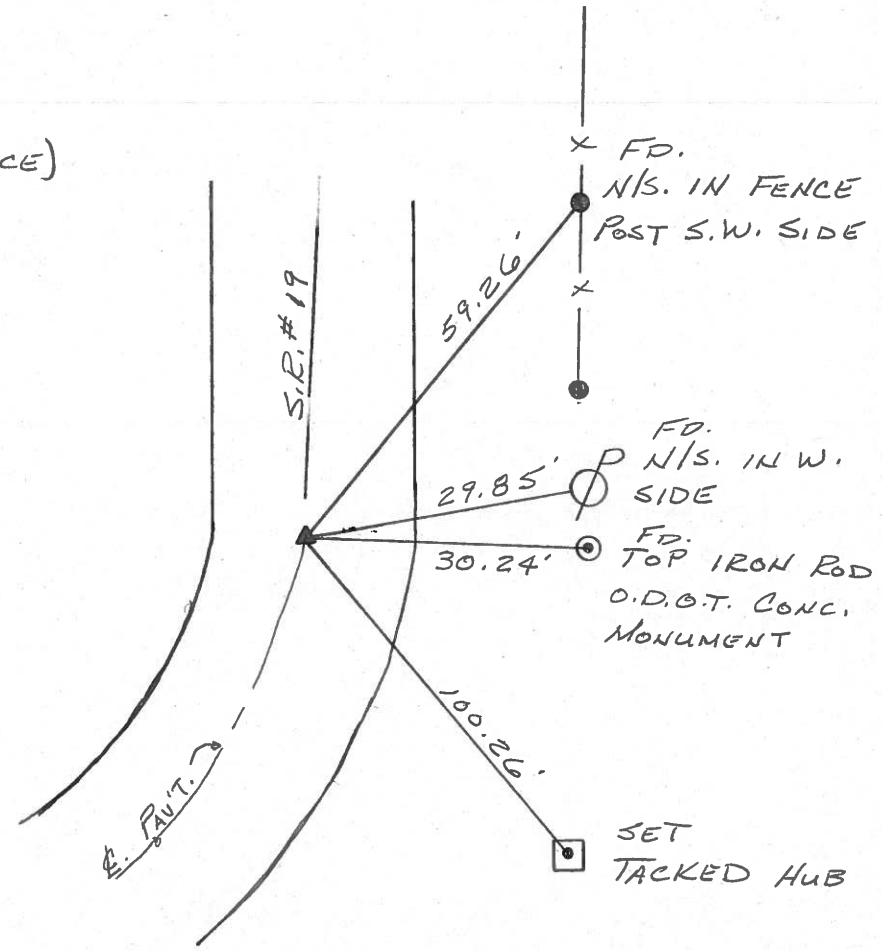
10.6 TO RT. EDGE PAVEMENT

S.L.M. 118+23

SET PK/WASHER  
9-10-1992  
R.C.C.



RECORD: 1/23/84  
 P.T. STA. 118+18.03  
 SET PK/WASHER ATOP  
 BOAT SPK. ATOP  
 R.P. SPK. (7" BELOW SURFACE)



County Seneca S.R. #19

Date 1/23/84

Township Bloom

Weather overcast

Section 21

Temp. 20°

T/N, R/E

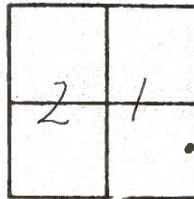
Personnel Cronin

Ripple

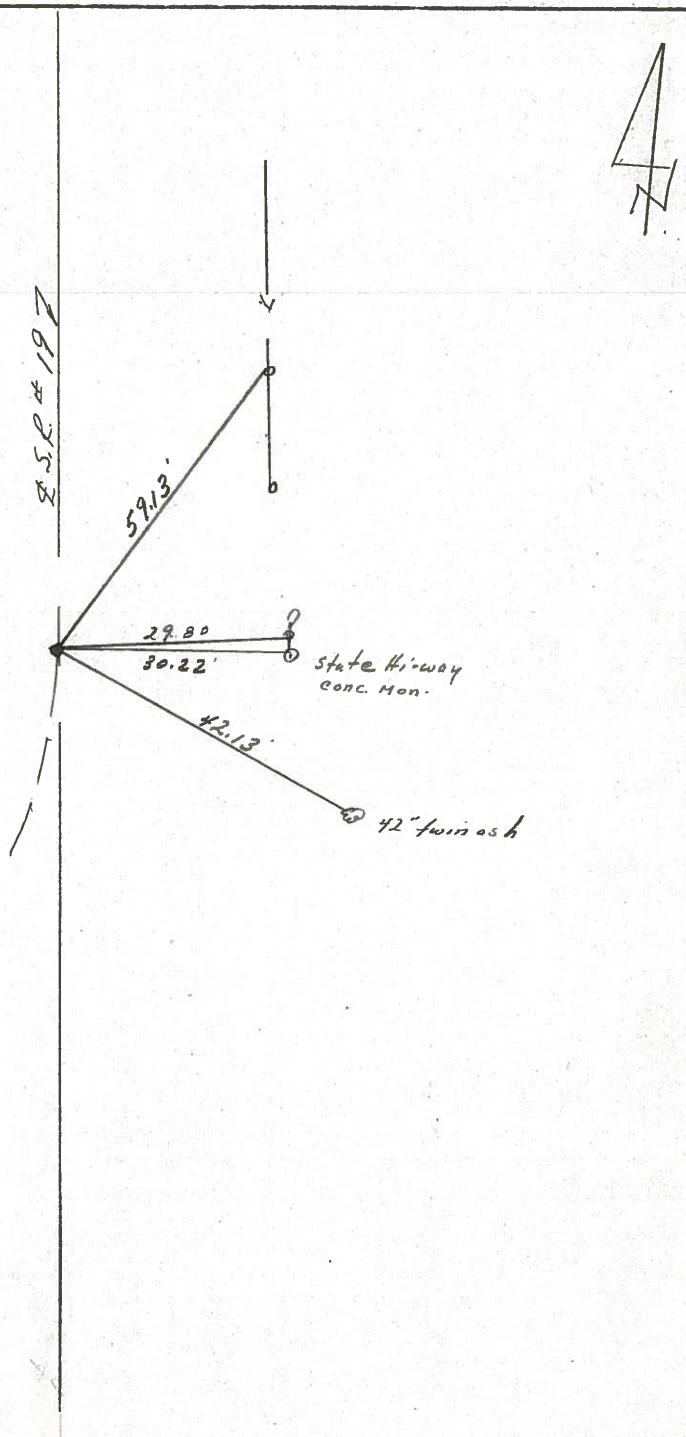
Geyman

Barbour

14



P.T.  
118418.03  
 Set P.K. & washer atop boat  
 spike atop R.R. spike (7"  
 below surface)



County SENECA S.R. 19-Sec. 6

Date 7/12/79

Township BLOOM

Weather hazy - humid

Section 21

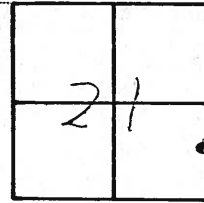
Temp. 89°

T/LN, R/LE

Personnel Cronin

Ripple

Geyman



(14)

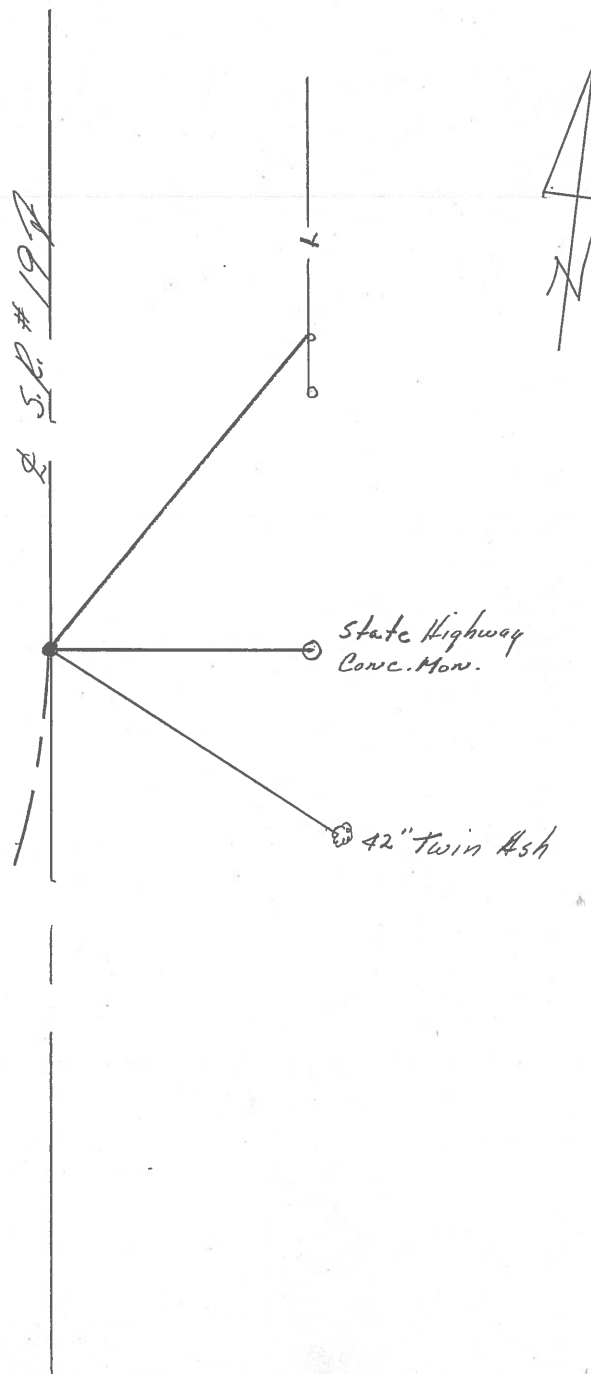
P.T.

118+18.03

Ed. bolt spike 1" below

surface. R.L. spike below

16" below surface



PERSONNEL	TITLE	PERSONNEL	TITLE	COUNTY	Seneca	DATE	1/11/72
Ash				S. R.	#19	WEATHER	cloudy
Cronin				SEC.		TEMP.	40°
Ripple							
Anderson							

DESCRIPTION Ties for Control Points - Sen. Co. Line North to Bloornville JOB NO. \_\_\_\_\_

