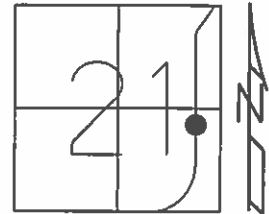


O.D.O.T. DISTRICT 2 SURVEY OFFICE (USE ONLY)

PERSONNEL _____ REFERENCE NO. 15 SHEET 18 OF 64
 NOTES RHOADES DATE 08-18-2015 ROUTE SR 19
 H.C. O'DONNELL WEATHER CLOUDY COUNTY SENECA
 R.C. RHOADES TEMP. 74°F TOWNSHIP BLOOM
 SECTION 21
 T 1 N R 16 E

TYPE MONUMENT PK & WASHER
 ON SURFACE - ~~BELOW~~ ON
~~LEFT - C~~ PAV'T - RIGHT ON
10.0' TO RT EDGE PAVEMENT
 S.L.M. 122+96.92



Grid: Northing: 496175.3001 Easting: 1826152.2485

RECORD P.I. 08°30' LT
 STA. 117+11.97, SET PK ATOP
 BOAT SPK. ATOP
 HARROW TOOTH
 7" BELOW SURFACE
 TANGENT = 106.47
 01-23-1984

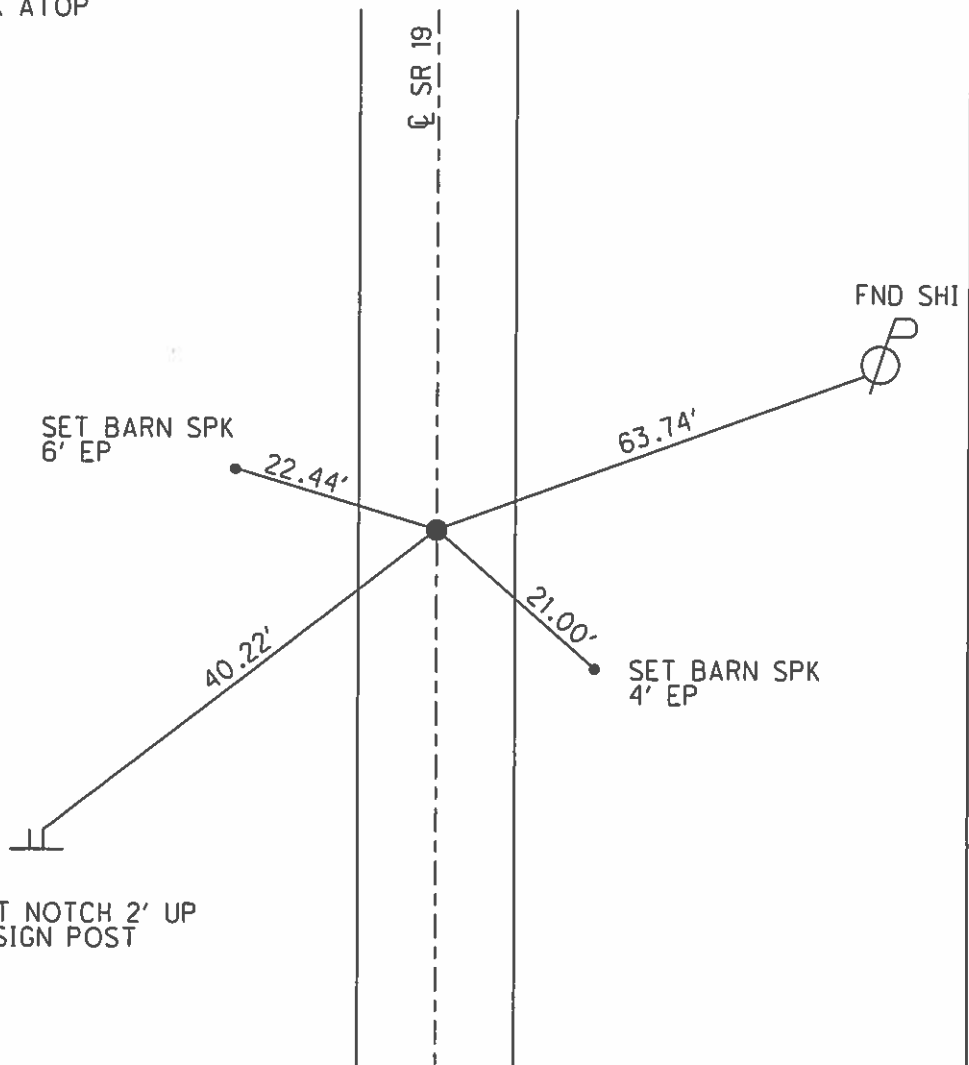
SET PK WASHER
 09-10-1992 RCC

FND PK & WASHER
 12-05-2013 JMR

GPS REF13
 12-31-13, TMR

GPS REF13
 08-18-2015, JMR

SET MAG & WASHER
 GPS, NEWREF13
 07-19-2016, JFO



O.D.O.T. DISTRICT 2 SURVEY OFFICE (USE ONLY)

PERSONNEL _____

REFERENCE NO. 15

SHEET 18 OF 62

NOTES CANTERBURY

DATE 04-13-06

ROUTE SR 19

H.C. MICKLOVICK

WEATHER SUNNY

COUNTY SENECA

R.C. HOUDESHHELL

TEMP. +65°

TOWNSHIP BLOOM

SECTION 21

T 1 N R 16 E

TYPE MONUMENT FD. PK./WASHER

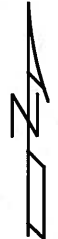
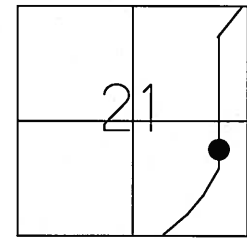
ON SURFACE - ~~BELOW~~ ON SURFACE

LEFT - ~~C PAV'T~~ - ~~RIGHT~~ ON CL.

10.0' TO RT. EDGE PAVEMENT

S.L.M. 122+98 (SV18)

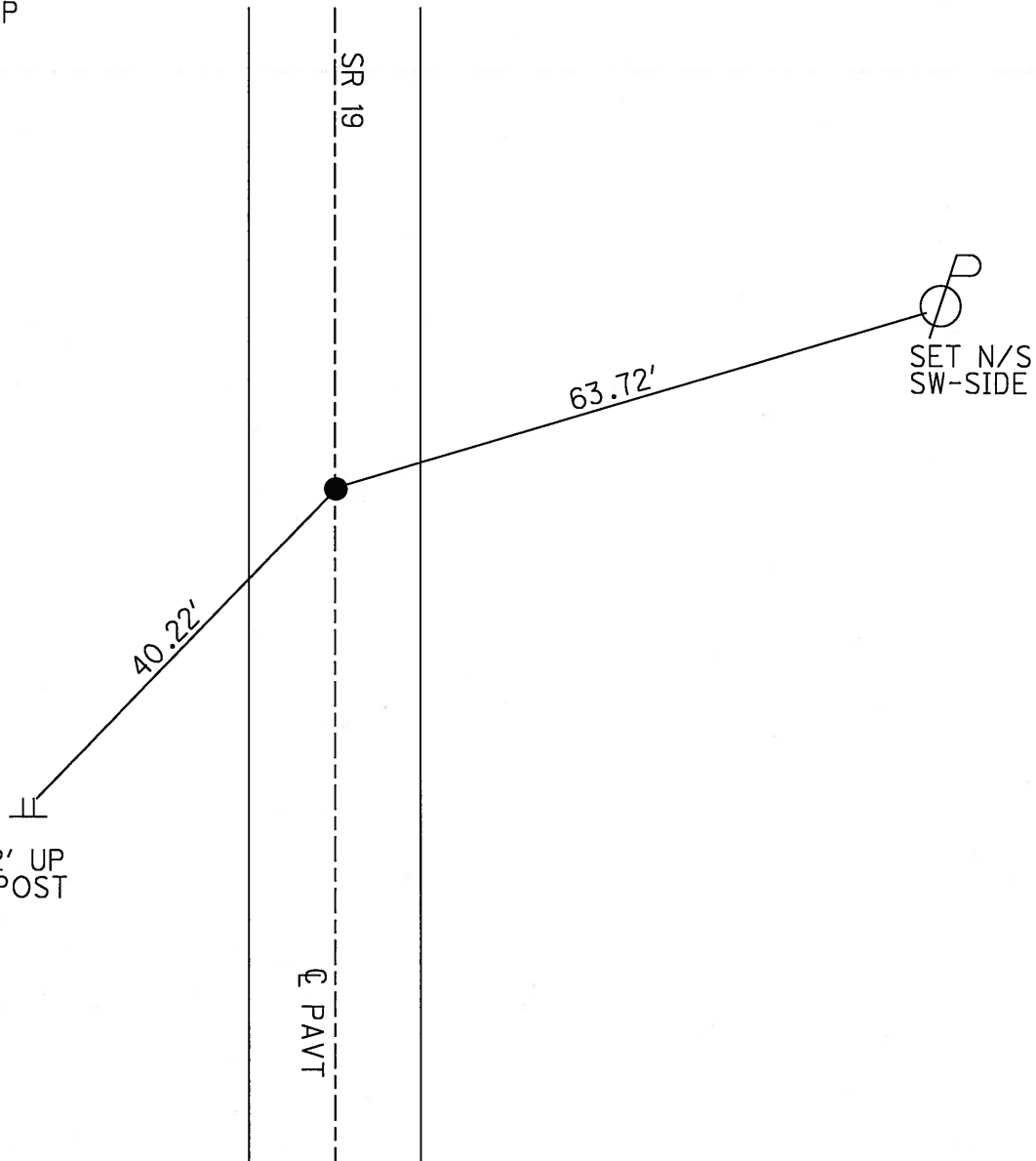
Grid: Northing: _____ Easting: _____



RECORD POT 123+00
 SET PK./WASHER ATOP
 RR. SPK. ATOP
 HARROW TOOTH
 7" BELOW SURFACE
 01-23-84

SET PK/WASHER
 09-10-92 RCC

CUT NOTCH 2' UP
 STEEL SIGN POST



O.D.O.T. DISTRICT 2 SURVEY OFFICE

PERSONNEL

REFERENCE NO. 15

SHEET 16 OF 53

NOTES RIPPLE

H.C. BARBOUR

DATE 6-22-1992

ROUTE # 19

R.C. CHENEY

WEATHER CLOUDY

COUNTY SENECA

GEYMAN

TEMP. 66°

TOWNSHIP BLOOM

SECTION 21

T1 N R 16 E

TYPE MONUMENT P.K./WASHER

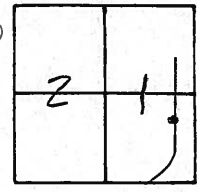
ON SURFACE - BELOW YES

~~LEFT~~ - PAV'T. - RIGHT ON

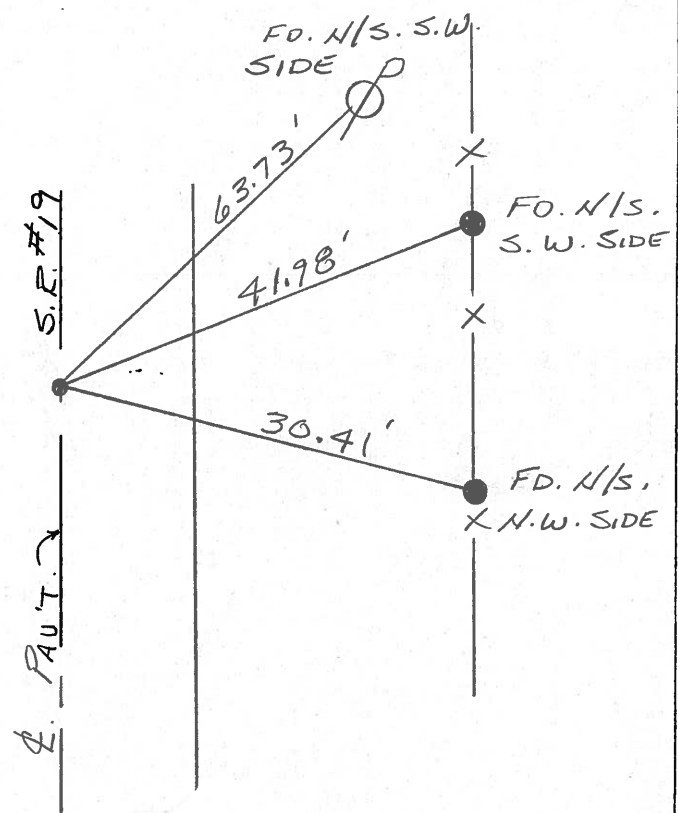
10.0' TO RT. EDGE PAVEMENT

S.L.M. 123+04

SET P.K./WASHER
 9-10-1992
 R.C.C.



RECORD: 1/23/84
 P.O.T. STA. 123+00
 SET P.K./WASHER ATOP
 R.P. SPK. ATOP
 HARROW TOOTH (7" BELOW SURFACE)



County Seneca S.R. #19

Township Bloom

Section 21

T1N, R16E

Personnel Cronin

Ripple

Geyman

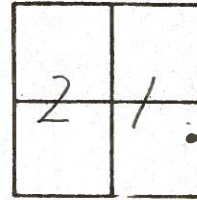
Barbour

15

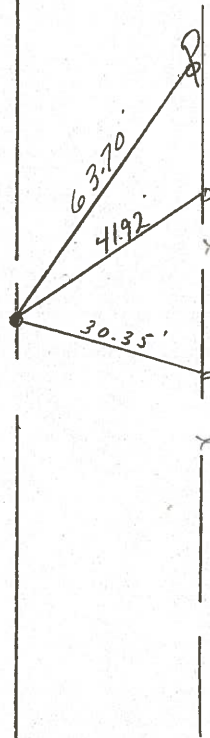
Date 1/23/84

Weather overcast - windy

Temp. 22°



P.O.T.
123 + 0.0
 Set P.K. & washer atop R.R.
 Spike atop harrow tooth
 (7" below surface.)



S.S.R. #197

County SENECA S.R. # 19-Sec. G.

Date 7/12/79

Township BLOOM

Weather hazy - humid

Section 21

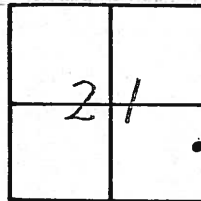
Temp. 89°

T/N, R/E

Personnel Cronin

Ripple

Geyman



(15)



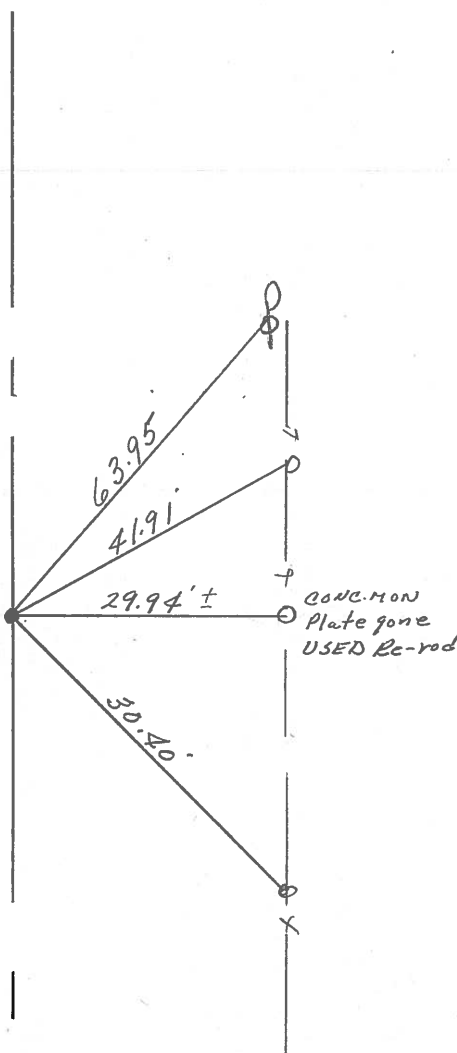
P.O.T

123 +00

I.L.R. spike on surface

4arrow tooth below and 5 1/2"

below surface.



252 #192

PERSONNEL TITLE PERSONNEL TITLE

Ash
Cronia
Ripple
Anderson

COUNTY Seneca

DATE 11/1/72

S. R. #19

WEATHER cloudy

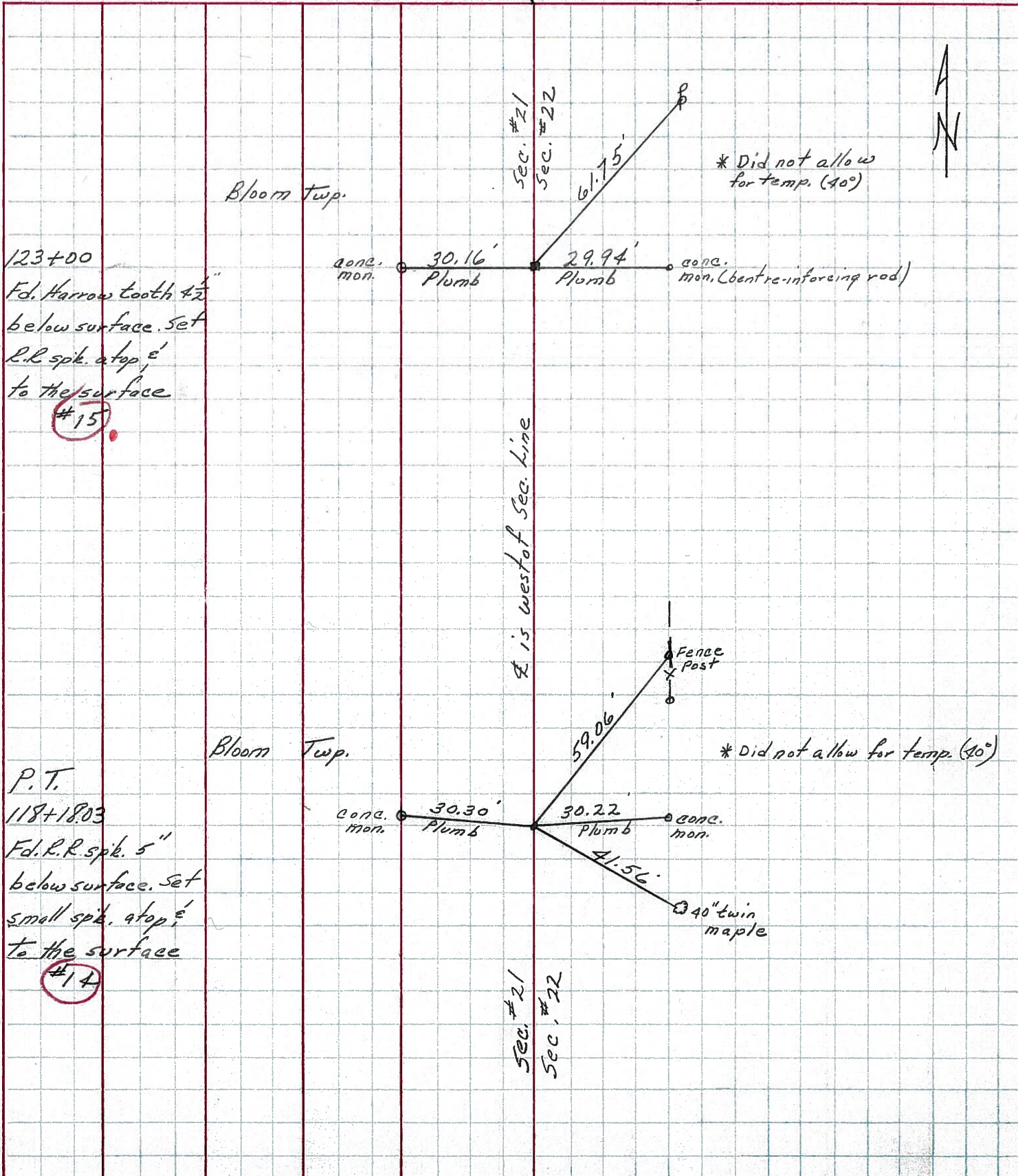
SEC.

TEMP. 40°

DESCRIPTION Ties for Control Points - Sen. Co. Line - North to Bloomville

JOB NO.

LEFT CENTER LINE RIGHT



| PERSONNEL | TITLE | PERSONNEL | TITLE | COUNTY | DATE | WEATHER | TEMP. |
|-----------|-------|-----------|-------|------------|----------|-------------|-------|
| MOSSE | | | | Seneca | 11-18-68 | cloudy-cold | 37° |
| BARBOUR | | | | S. R. # 19 | | | |
| Redding | | | | SEC. 6 | | | |
| Potts | | | | | | | |

DESCRIPTION Ties for Control Points - Sen Co Line to Bloomville JOB NO. _____

