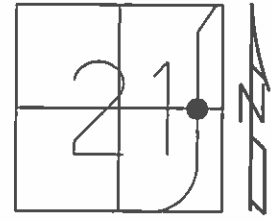


O.D.O.T. DISTRICT 2 SURVEY OFFICE (USE ONLY)

PERSONNEL _____ REFERENCE NO. 16 SHEET 19 OF 64
 NOTES RHOADES DATE 08-18-2015 ROUTE SR 19
 H.C. O'DONNELL WEATHER CLOUDY COUNTY SENECA
 R.C. RHOADES TEMP. 74°F TOWNSHIP BLOOM
 _____ SECTION 21
 _____ T 1 N R 16 E

TYPE MONUMENT PK & WASHER
 ON SURFACE - ~~BELOW~~ ON _____
 LEFT - ☉ PAV'T - ~~RIGHT~~ 0.3'
11.0' TO RT EDGE PAVEMENT
 S.L.M. 133+96.13



Grid: Northing: 497260.5336 Easting: 1825977.4449

RECORD STA. 134+36
 SET PK & WASHER ATOP
 BOAT SPK. ATOP
 HARROW TOOTH
 5.5" BELOW SURFACE
 01-23-1984

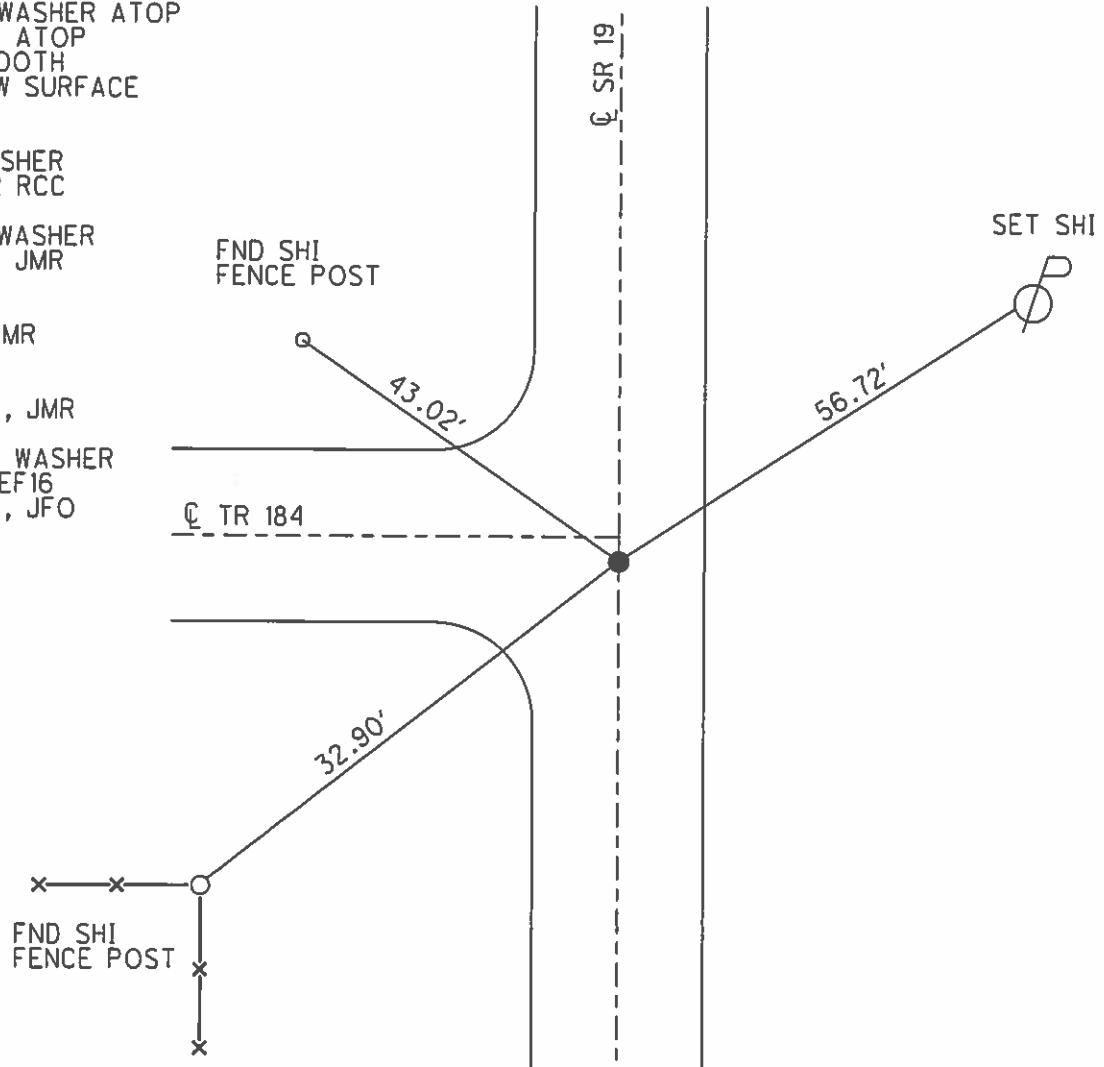
SET PK WASHER
 09-10-1992 RCC

FND PK & WASHER
 12-05-2013 JMR

GPS REF16
 12-31-13, TMR

GPS REF16
 08-18-2015, JMR

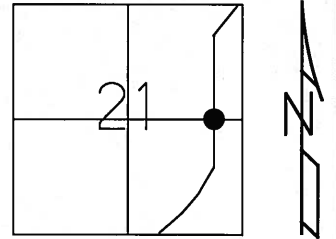
SET MAG & WASHER
 GPS, NEWREF16
 07-19-2016, JFO



O.D.O.T. DISTRICT 2 SURVEY OFFICE (USE ONLY)

PERSONNEL	REFERENCE NO. <u>16</u>	SHEET <u>19</u> OF <u>62</u>
NOTES <u>CANTERBURY</u>	DATE <u>04-13-06</u>	ROUTE <u>SR 19</u>
H.C. <u>MICKLOVICK</u>	WEATHER <u>FAIR</u>	COUNTY <u>SENECA</u>
R.C. <u>HOUESHELL</u>	TEMP. <u>+66°</u>	TOWNSHIP <u>BLOOM</u>
		SECTION <u>21</u>
		T <u>1</u> N R <u>16</u> E

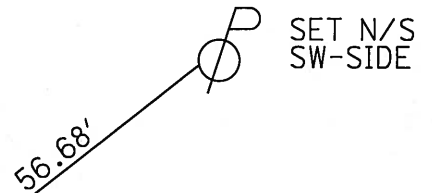
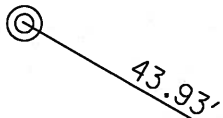
TYPE MONUMENT FD. PK./WASHER
 ON SURFACE - ~~BELOW~~ ON SURFACE
 LEFT - ~~C PAV'T~~ - RIGHT 0.3' LT. 3' SOUTH OF CL."W"
11.0' TO RT. EDGE PAVEMENT
 S.L.M. 134+00 (SV19)
 Grid: Northing: _____ Easting: _____



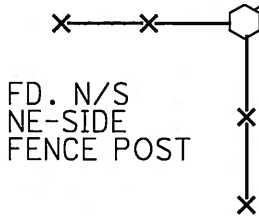
RECORD STA. 134+36
 SET PK./WASHER ATOP
 BOAT SPK. ATOP
 HARROW TOOTH
 5.5" BELOW SURFACE
 01-23-84

SET PK/WASHER
 09-10-92 RCC

FD. TOP IP.
 ODOT CONC. MON.



TR. 184
 C PAVT



FD. N/S
 NE-SIDE
 FENCE POST

C PAVT

SR 19

SET N/S
 SW-SIDE

O.D.O.T. DISTRICT 2 SURVEY OFFICE

PERSONNEL

REFERENCE NO. 16

SHEET 17 OF 53

NOTES RIPPLE

H.C. BARRONE

DATE 6-22-1992

ROUTE #19

R.C. CHENEY

WEATHER Cloudy

COUNTY SENECA

GEYMAN

TEMP. 66°

TOWNSHIP Bloom

SECTION 21

T.1 N. R. 16 E

TYPE MONUMENT P.K. NAIL

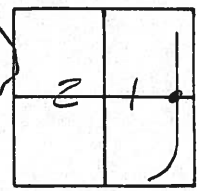
ON SURFACE - BELOW YES

LEFT - Q PAV'T. - RIGHT 1'

9.0' TO LT. EDGE PAVEMENT

S.L.M. 134+02

SET PK/WASHER
9-10-1992
R.C.C.



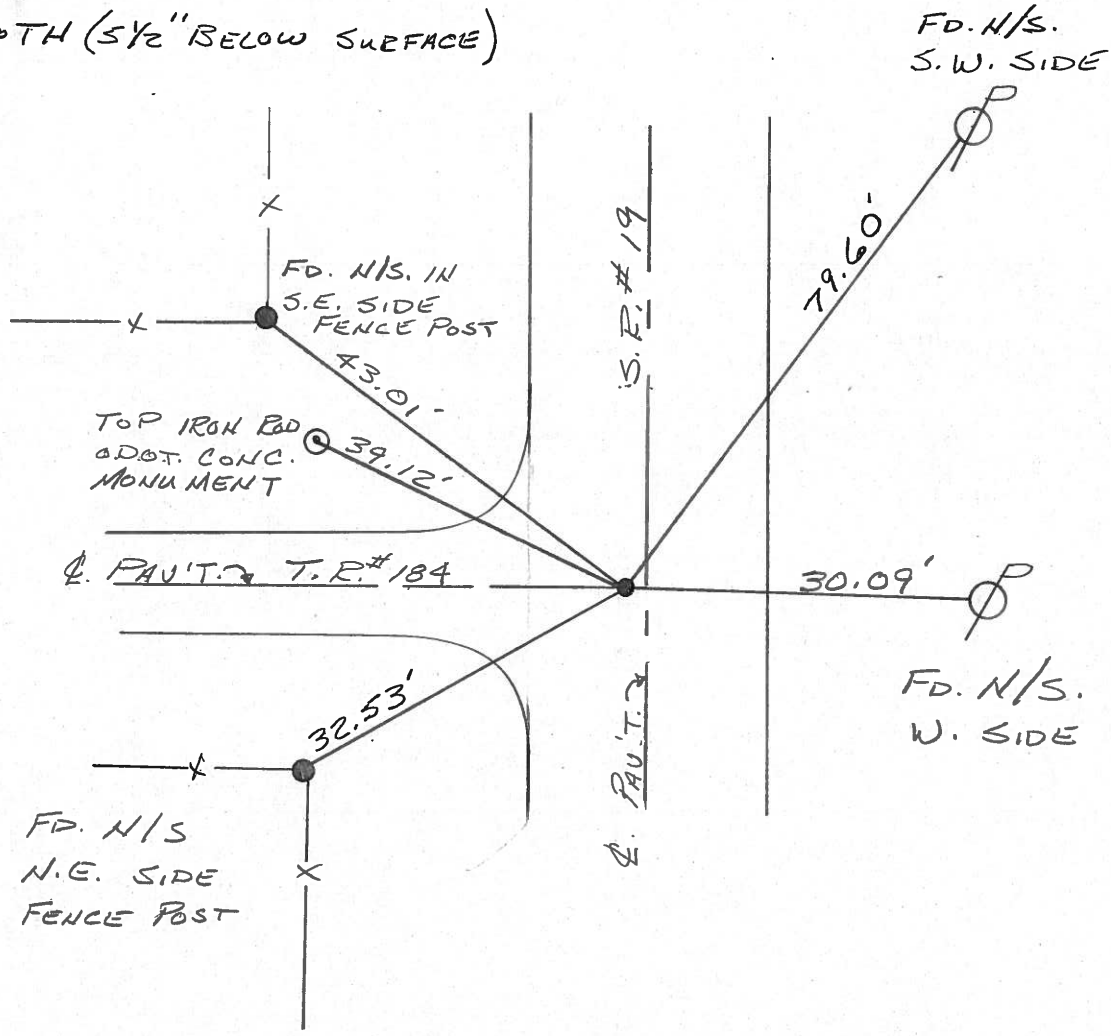
RECORD: 1/23/84

STA. 134+36

SET P.K. ATOP

BOAT SPK. ATOP

HARROW TOOTH (5/2" BELOW SURFACE)



County Seneca S.R. #19

Date 1/23/84

Township Bloom

Weather overcast - windy

Section 21

Temp. 22°

T/N, R/E

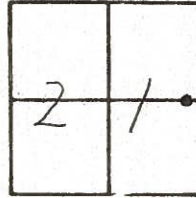
Personnel Cronin

Ripple

Geyman

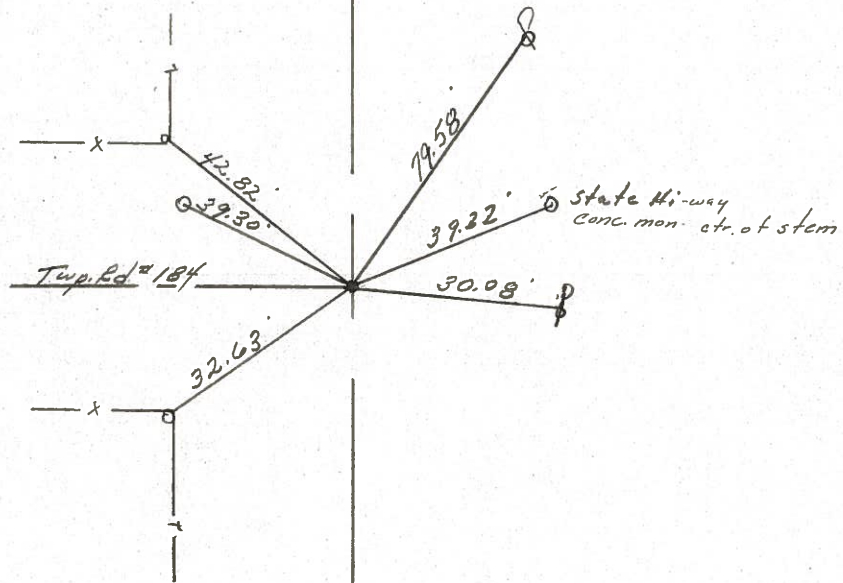
Barbour

16



S.L.M. = 134+36

Set P.K. atop boat spike
atop harrow tooth (5 1/2"
below surface)



S.S.R. #197

County SENECA S.R. 19

Date 7/16/79

Township BLOOM

Weather sunny

Section 21

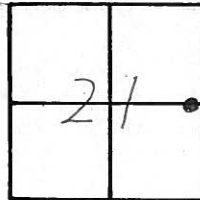
Temp. 75°

T1N, R16E

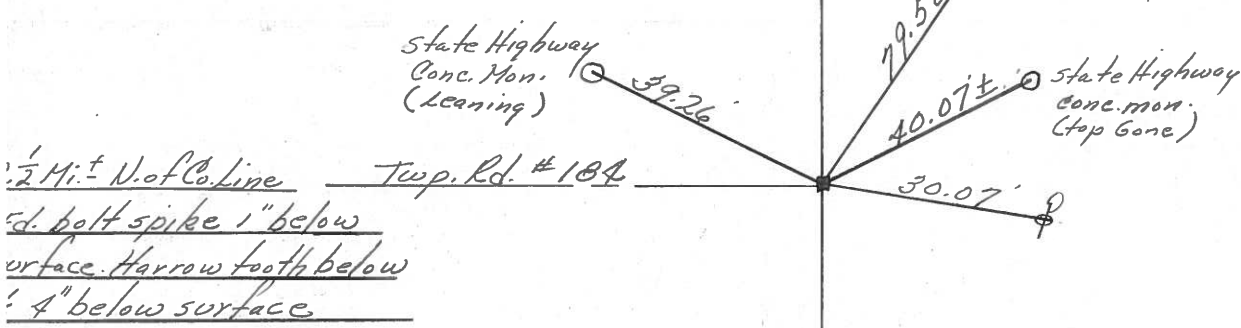
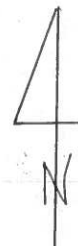
Personnel Cronin

Ripple

Geyman



16



S.S.R. #19

PERSONNEL	TITLE	PERSONNEL	TITLE	COUNTY	DATE	WEATHER	TEMP.
Ash				Seneca	11/1/72	cloudy	40°
Cronin				S. R. #19			
Ripple							
Anderson				SEC.			

DESCRIPTION Ties for Control Points - Sen. Co. line - North to Bloomville JOB NO. _____

