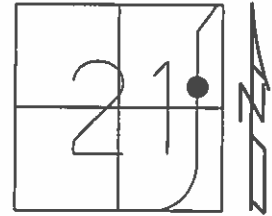


O.D.O.T. DISTRICT 2 SURVEY OFFICE (USE ONLY)

PERSONNEL \_\_\_\_\_ REFERENCE NO. 17 SHEET 20 OF 64  
 NOTES RHOADES DATE 08-18-2015 ROUTE SR 19  
 H.C. O'DONNELL WEATHER CLOUDY COUNTY SENECA  
 R.C. RHOADES TEMP. 74°F TOWNSHIP BLOOM  
 \_\_\_\_\_ SECTION 21  
 \_\_\_\_\_ T 1 N R 16 E

TYPE MONUMENT PK & WASHER  
 ON SURFACE - ~~BELOW~~ ON \_\_\_\_\_  
 LEFT - ☉ PAV'T - ~~RIGHT~~ 1.0'  
9.0' TO LT EDGE PAVEMENT  
 S.L.M. 145+95.27



Grid: Northing: 498444.36 Easting: 1825786.2294

RECORD STA. 117+11.97  
 SET PK & WASHER ATOP  
 RR. SPK. ATOP  
 HARROW TOOTH  
 6.5" BELOW SURFACE  
 01-23-1984

SET PK WASHER  
 09-10-1992 RCC

FND PK & WASHER  
 12-05-2013 JMR

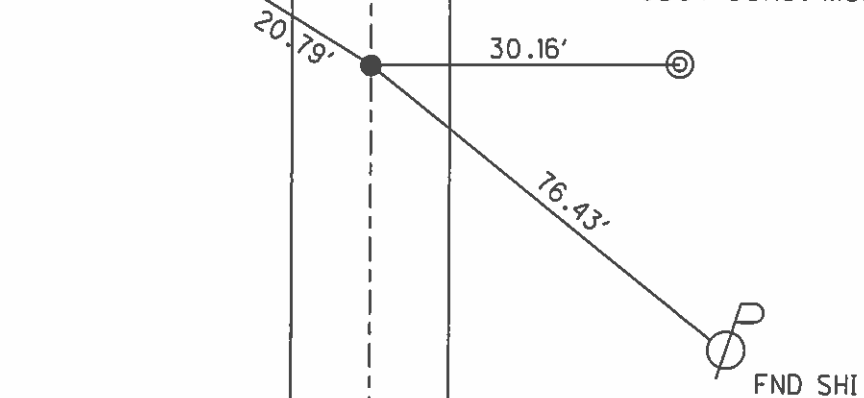
GPS REF17  
 12-31-13, TMR

GPS REF17  
 08-18-2015, EBW

SET MAG & WASHER  
 GPS, NEWREF17  
 07-19-2016, JFO

SET BARN SPK.  
 6' EP

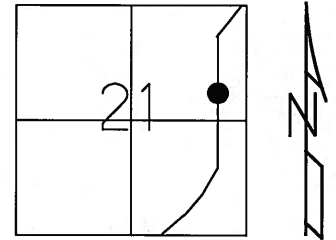
FND TOP IP.  
 ODOT CONC. MON



O.D.O.T. DISTRICT 2 SURVEY OFFICE (USE ONLY)

PERSONNEL	REFERENCE NO. <u>17</u>	SHEET <u>20</u> OF <u>62</u>
NOTES <u>CANTERBURY</u>	DATE <u>04-13-06</u>	ROUTE <u>SR 19</u>
H.C. <u>MICKLOVICK</u>	WEATHER <u>FAIR</u>	COUNTY <u>SENECA</u>
R.C. <u>HOUDSHELL</u>	TEMP. <u>+66°</u>	TOWNSHIP <u>BLOOM</u>
		SECTION <u>21</u>
		T <u>1</u> N R <u>16</u> E

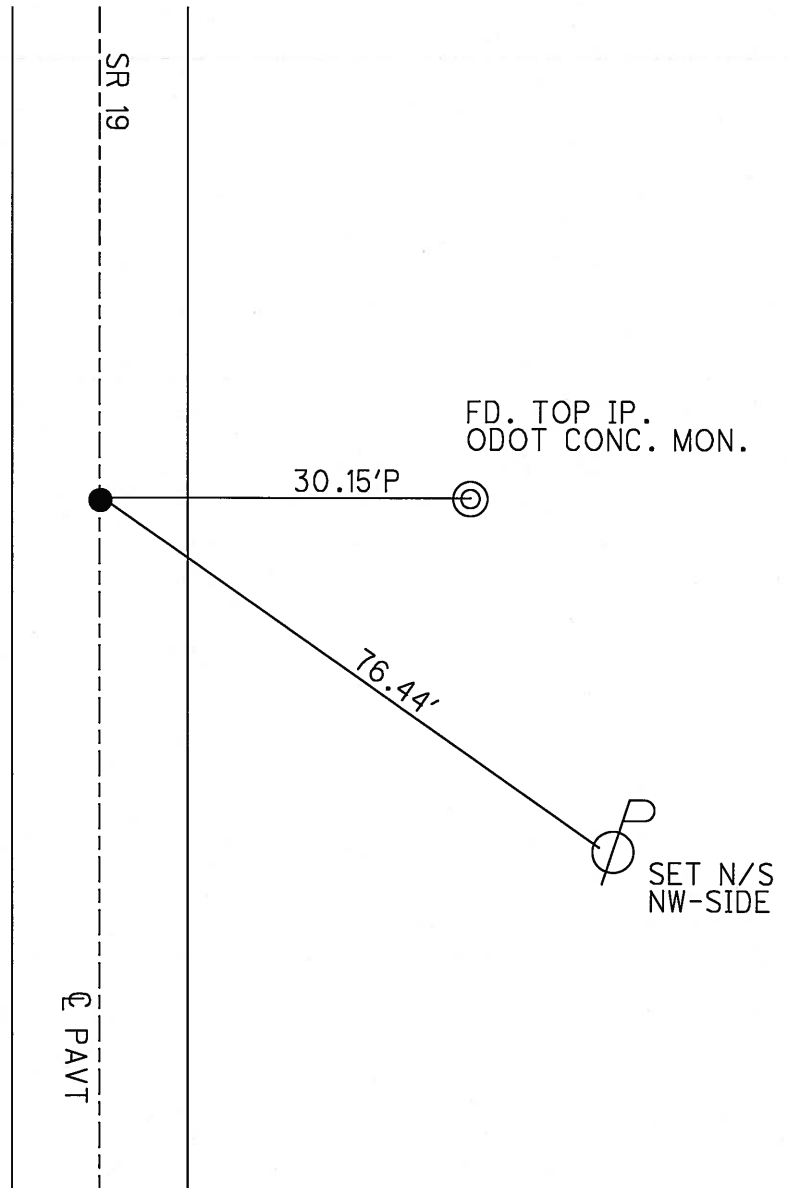
TYPE MONUMENT FD. PK./WASHER  
 ON SURFACE - ~~BELOW~~ ON SURFACE  
 LEFT - ~~C PAV'T~~ - RIGHT 1.0' LT.  
9.0' TO LT. EDGE PAVEMENT  
 S.L.M. 145+97 (SV20)



Grid: Northing: \_\_\_\_\_ Easting: \_\_\_\_\_

RECORD STA. 146+00  
 SET PK./WASHER ATOP  
 RR.SPK. ATOP  
 HARROW TOOTH  
 6.5" BELOW SURFACE  
 01-23-84

SET PK/WASHER  
 09-10-92 RCC



# O.D.O.T. DISTRICT 2 SURVEY OFFICE

PERSONNEL

REFERENCE NO. 17

SHEET 18 OF 53

NOTES RIPPLE

H.C. BAEBOUR

DATE 6-22-1992

ROUTE #19

R.C. CHENEY

WEATHER CLOUDY

COUNTY SENECA

GEYMAN

TEMP. 66°

TOWNSHIP BLOOM

SECTION 21

T L N R 16 E

TYPE MONUMENT PK/WASHER

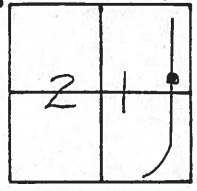
ON SURFACE - BELOW YES

LEFT-☉ PAV'T. - RIGHT 1'

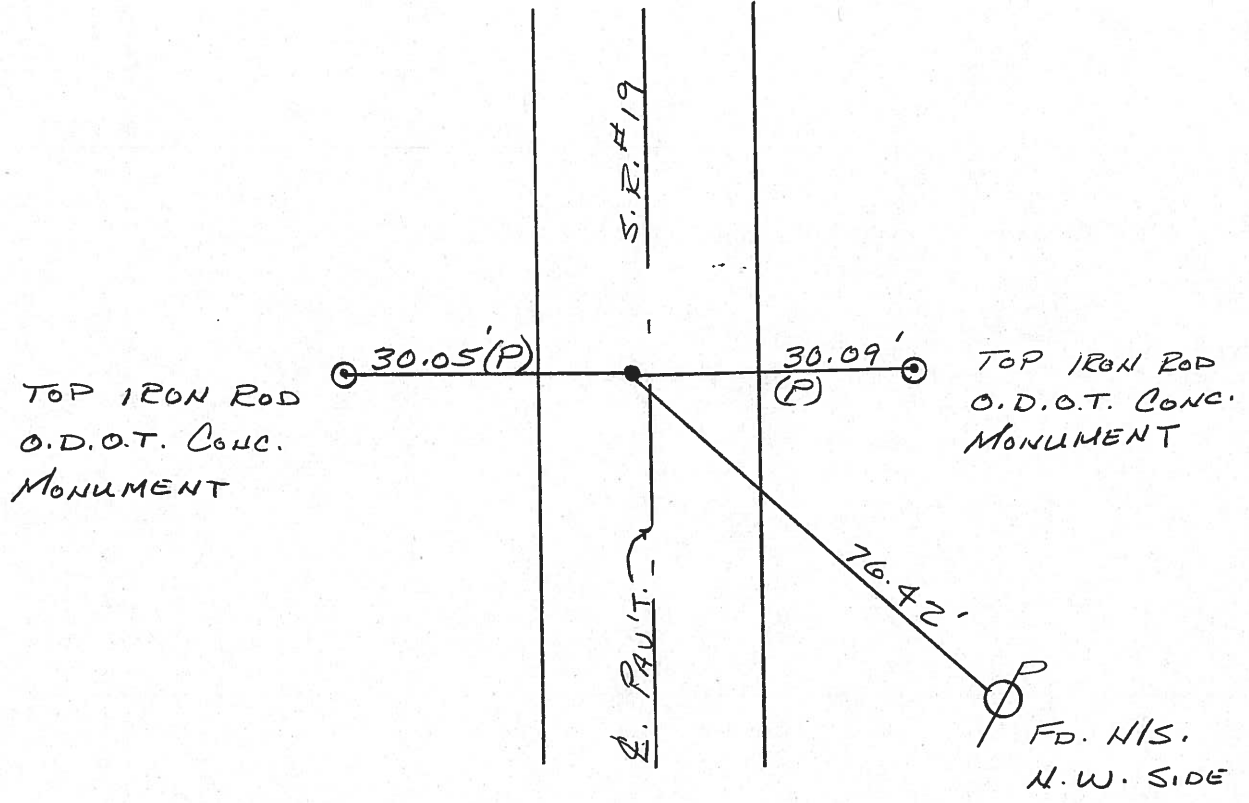
9.0' TO LT. EDGE PAVEMENT

S.L.M. 146+00

SET P.K./WASHER  
 9-10-1992  
 RCC



RECORD: 1/23/84  
 STA. 146+00  
 SET P.K./WASHER ATOP  
 P.R. SPK. ATOP  
 HARROW TOOTH (6 1/2" BELOW SURFACE)



County Seneca S.R. # 19

Date 1/23/84

Township Bloom

Weather overcast - windy

Section 21

Temp. 22°

T/N, R/E

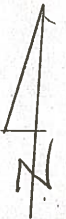
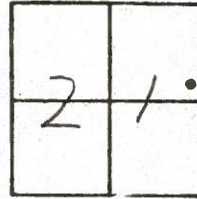
Personnel Cronin

Ripple

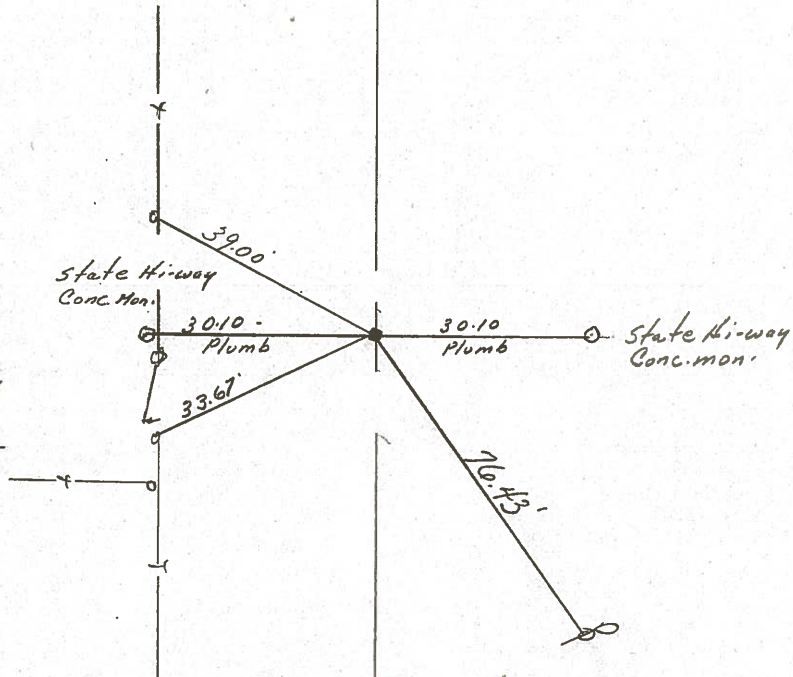
Geyman

Barbour

17



146+00  
 Set P.K. & washer atop  
 R.R. spike atop harrow tooth  
 (6 1/2" below surface)



S.R. #19

County SENECA S.R. 19

Date 7/16/79

Township BLOOM

Weather sunny

Section 21

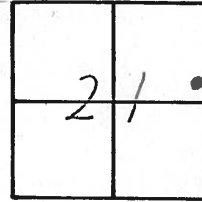
Temp. 75°

T1N, R16E

Personnel Cronin

Ripple

Geyman



17



146+00  
1" P.P. spike 1" below  
surface. Harrow tooth  
below 5" below surface

State Highway  
 conc. Mon. 30.10'  
 Plumb

30.10

State Highway  
 Conc. Mon.

33.59

76.39

S.S.P. # 19





PERSONNEL	TITLE	PERSONNEL	TITLE
Ash			
Cronin			
Ripple			
Anderson			

COUNTY Seneca

DATE 11/11/72

S. R. #19

WEATHER cloudy

SEC. \_\_\_\_\_

TEMP. 40°

DESCRIPTION Ties for Control Points - Sen. Co. line - North to Bloomville

JOB NO. \_\_\_\_\_

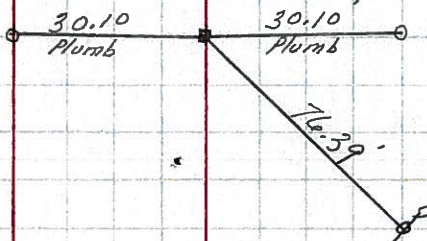
LEFT

CENTER LINE

RIGHT

146+00  
 Fd. Harrow tooth  
 4" below surface.  
 Set L.L. spike atop  
 4' to the surface

#17



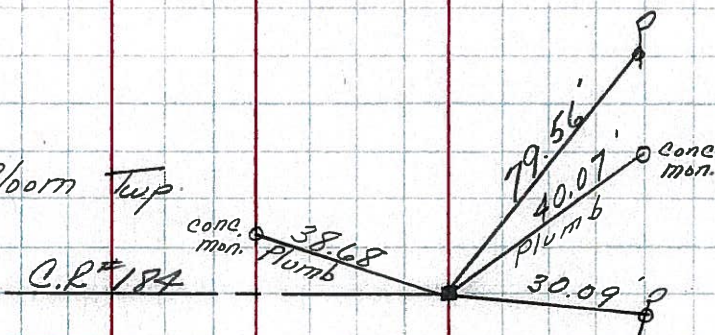
\* Did not allow for temp. (40°)

Bloom Twp.

C.P. #184

Fd. Harrow tooth  
 3" below surface. Set  
 small spike atop 4'  
 to the surface

#16



\* Did not allow for temp. (40°)



PERSONNEL	TITLE	PERSONNEL	TITLE	COUNTY	DATE
Schneider				Seneca	7-28-69
Mosser				S. R. 19	WEATHER Fair
Barbour				SEC. Co. Line to Bloomsville	TEMP. 75°
Potts					

DESCRIPTION Tie for Control Points JOB NO. \_\_\_\_\_

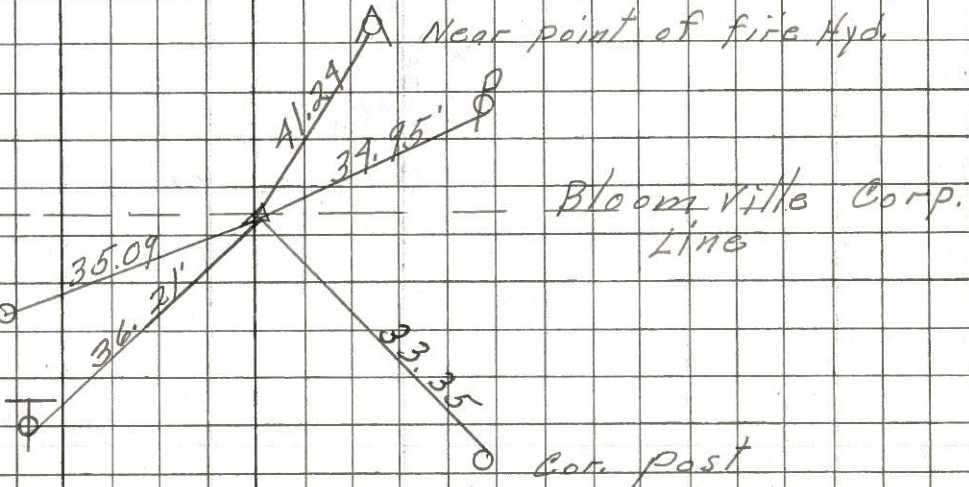
31

Found R.R. Spk.

~~8277~~

8230

R/w Mon.



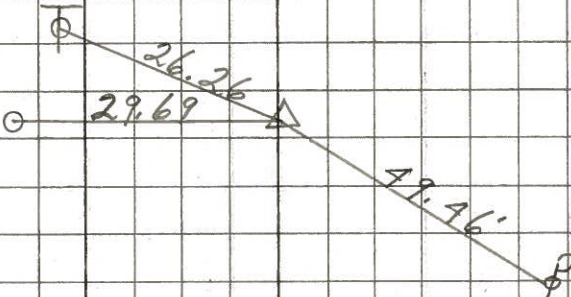
did find some points

19

151+15

Sq. Iron pin  
Found R.R. Spk.

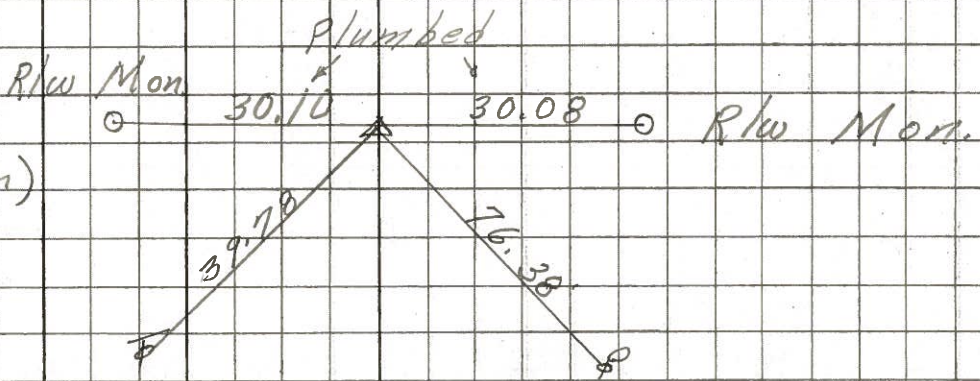
8213



17

146+00

(Found (sq. iron pin)  
R.R. Spk.)



8212