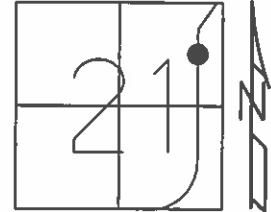


O.D.O.T. DISTRICT 2 SURVEY OFFICE (USE ONLY)

PERSONNEL \_\_\_\_\_ REFERENCE NO. 18 SHEET 21 OF 64  
 NOTES RHOADES DATE 08-18-2015 ROUTE SR 19  
 H.C. O'DONNELL WEATHER CLOUDY COUNTY SENECA  
 R.C. RHOADES TEMP. 74°F TOWNSHIP BLOOM  
 \_\_\_\_\_ SECTION 21  
 \_\_\_\_\_ T 1 N R 16 E

TYPE MONUMENT PK & WASHER  
 ON SURFACE - ~~BELOW~~ ON  
 LEFT - ☉ PAV'T - RIGHT ON  
11.0' TO RT EDGE PAVEMENT  
 S.L.M. 149+58.80



Grid: Northing: 498804.1994 Easting: 1825734.8802

RECORD PC STA. 149+63.09  
 SET PK & WASHER ATOP  
 BOAT SPK. ATOP  
 RR. SPK  
 8" BELOW SURFACE  
 01-23-1984

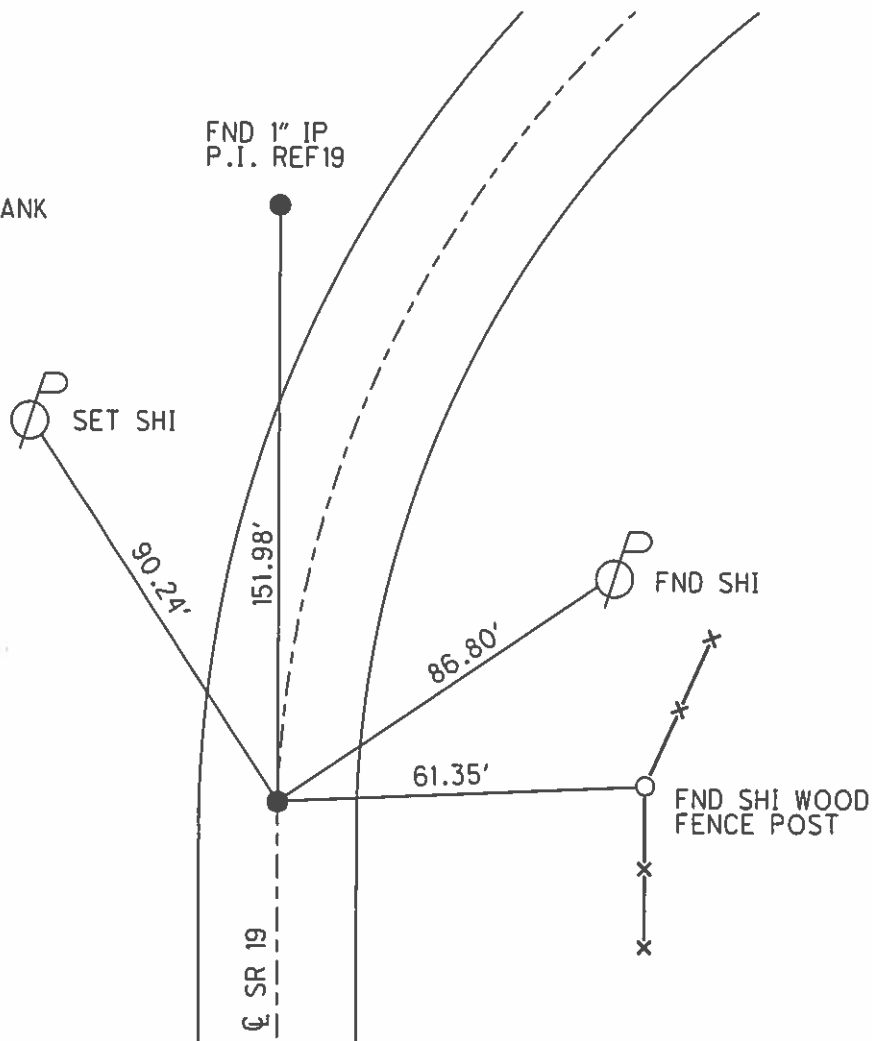
SET PK WASHER  
 09-10-1992 RCC

FND HOLE W/ PK SHANK  
 12-05-2013 JMR

GPS REF18  
 12-31-13, TMR

GPS REF18  
 08-18-2015, EBW

SET MAG & WASHER  
 GPS, NEWREF18  
 07-19-2016, JFO



O.D.O.T. DISTRICT 2 SURVEY OFFICE (USE ONLY)

PERSONNEL \_\_\_\_\_

REFERENCE NO. 18

SHEET 21 OF 62

NOTES CANTERBURY

DATE 04-13-06

ROUTE SR 19

H.C. MICKLOVICK

WEATHER FAIR

COUNTY SENECA

R.C. HOUESHELL

TEMP. +66°

TOWNSHIP BLOOM

SECTION 21

T 1 N R 16 E

TYPE MONUMENT FD. PK./WASHER

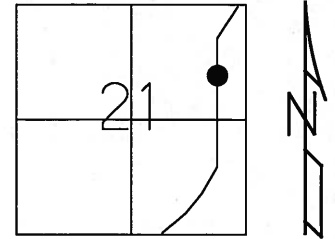
ON SURFACE - ~~BELOW~~ ON SURFACE

~~LEFT~~ - C PAV'T - ~~RIGHT~~ ON CL.

11.0' TO RT. EDGE PAVEMENT

S.L.M. 149+60 (SV21)

Grid: Northing: \_\_\_\_\_ Easting: \_\_\_\_\_



RECORD PC. STA. 149+63.09  
 SET PK./WASHER ATOP  
 BOAT SPK. ATOP  
 RR. SPK.  
 8" BELOW SURFACE  
 01-23-84

SET PK/WASHER  
 09-10-92 RCC

FD. N/S  
 SE-SIDE

FD. 1" IP  
 P.I. (REF 19)



90.03'

151.91'  
 REC.

86.80'

SET N/S  
 SW-SIDE



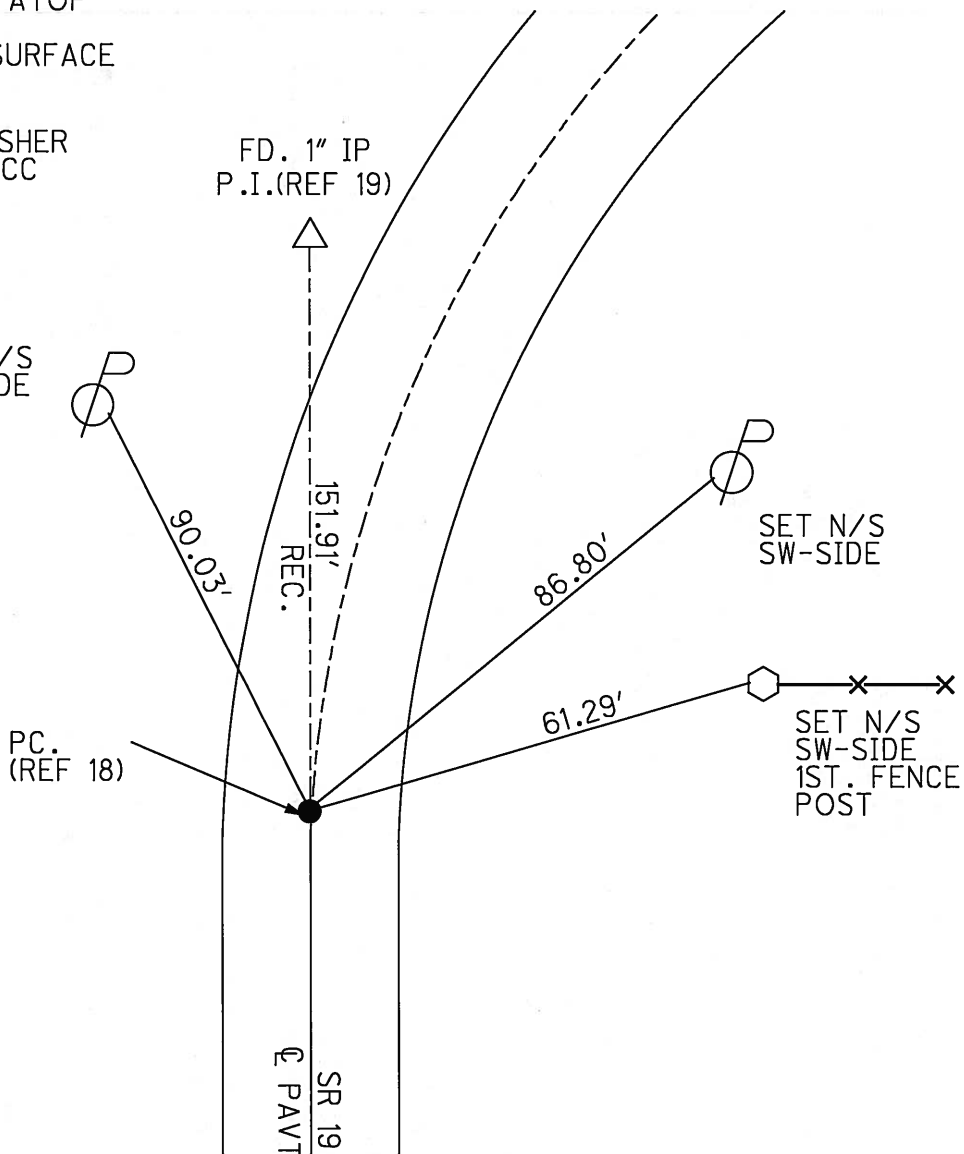
PC.  
 (REF 18)

61.29'

SET N/S  
 SW-SIDE  
 1ST. FENCE  
 POST



SR 19  
 C PAVT



# O.D.O.T. DISTRICT 2 SURVEY OFFICE

PERSONNEL

REFERENCE NO. 18

SHEET 19 OF 53

NOTES RIPPLE

H.C. BARBOR

DATE 6-22-1992

ROUTE #19

R.C. CHENEY

WEATHER CLOUDY

COUNTY SENECA

GEYMAN

TEMP. 66°

TOWNSHIP BLOOM

SECTION 21

T/L H R 16 E

TYPE MONUMENT PK/WASHER

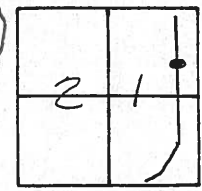
SET PK/WASHER  
9-10-1992  
RLL

ON SURFACE - BELOW YES

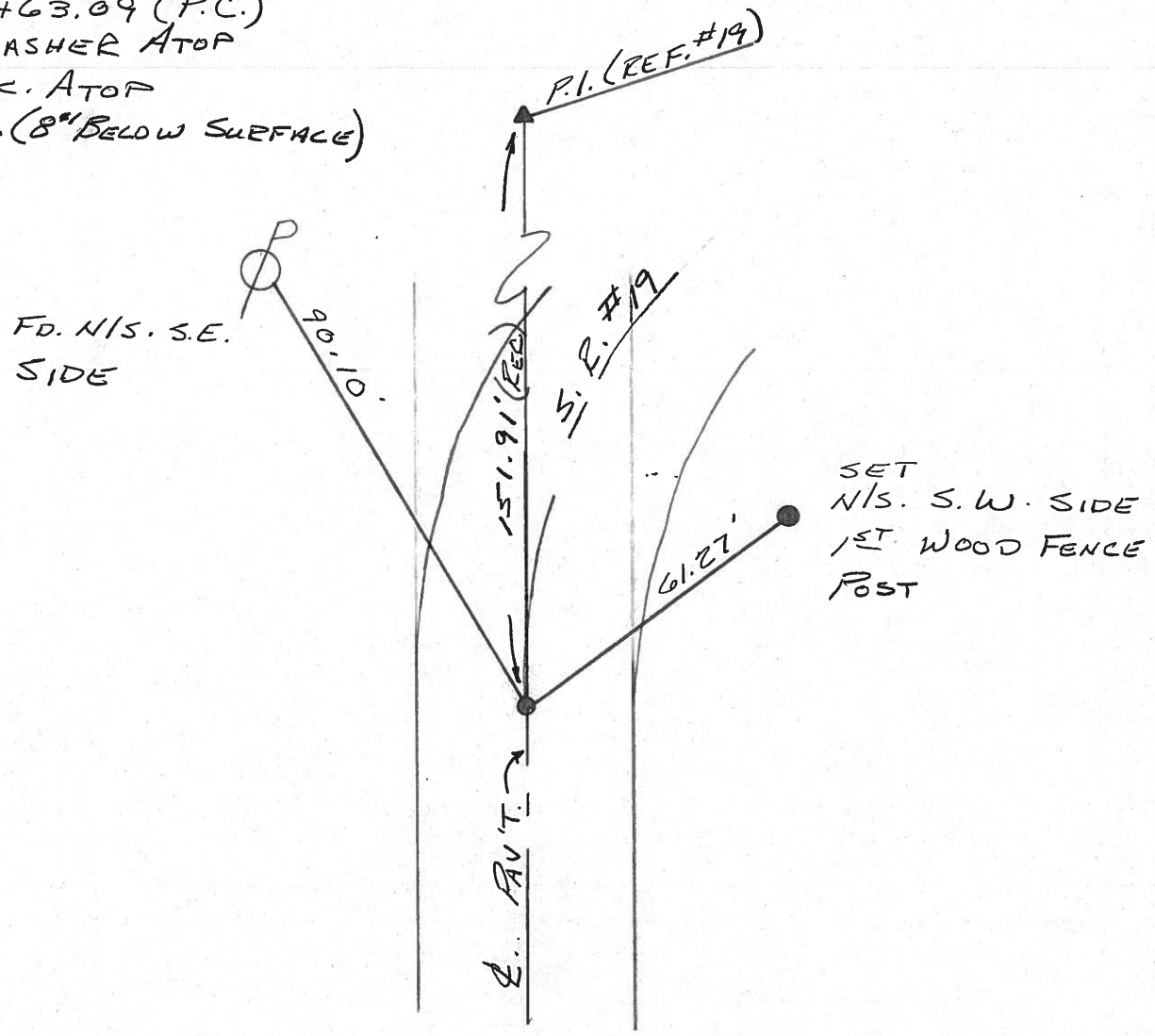
~~LEFT~~ - PAV'T. - RIGHT ON

10.0' TO RT. EDGE PAVEMENT

S.L.M. 149+63.09'



RECORD: 1/23/84  
 STA. 149+63.09 (P.C.)  
 SET PK/WASHER ATOP  
 BOAT SPK. ATOP  
 R.P. SPK. (8" BELOW SURFACE)



County Seneca S.R. #19

Date 1/23/84

Township Bloom

Weather overcast

Section 21

Temp. 24°

T/LN, R/E

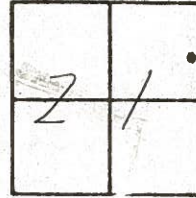
Personnel Cronin

Ripple

Geyman

Barbour

(18)



149+63.09  
Set P.K. & washer atop boat  
spike atop R.R. spike 68"  
below surface

State Hi-way  
conc. mon.

30.10'  
Plumb

29.73'

State Hi-way  
Conc. mon.

32.02'

P.I.  
90.10'

151.91'



S.S. #19

County SENECA S.R. 19

Date 7/16/79

Township BLOOM

Weather sunny

Section 21

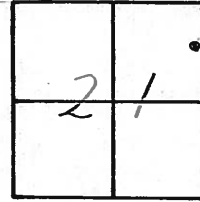
Temp. 80°

T/LN, R/E

Personnel Cronin

Ripple

Geyman

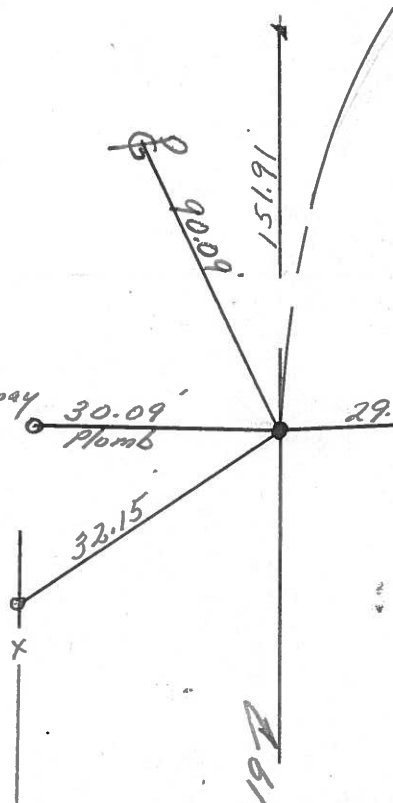


18



149+63.09  
1" d. bolt spike 1" below  
surface, R.R. spike below  
6 3/4' below surface

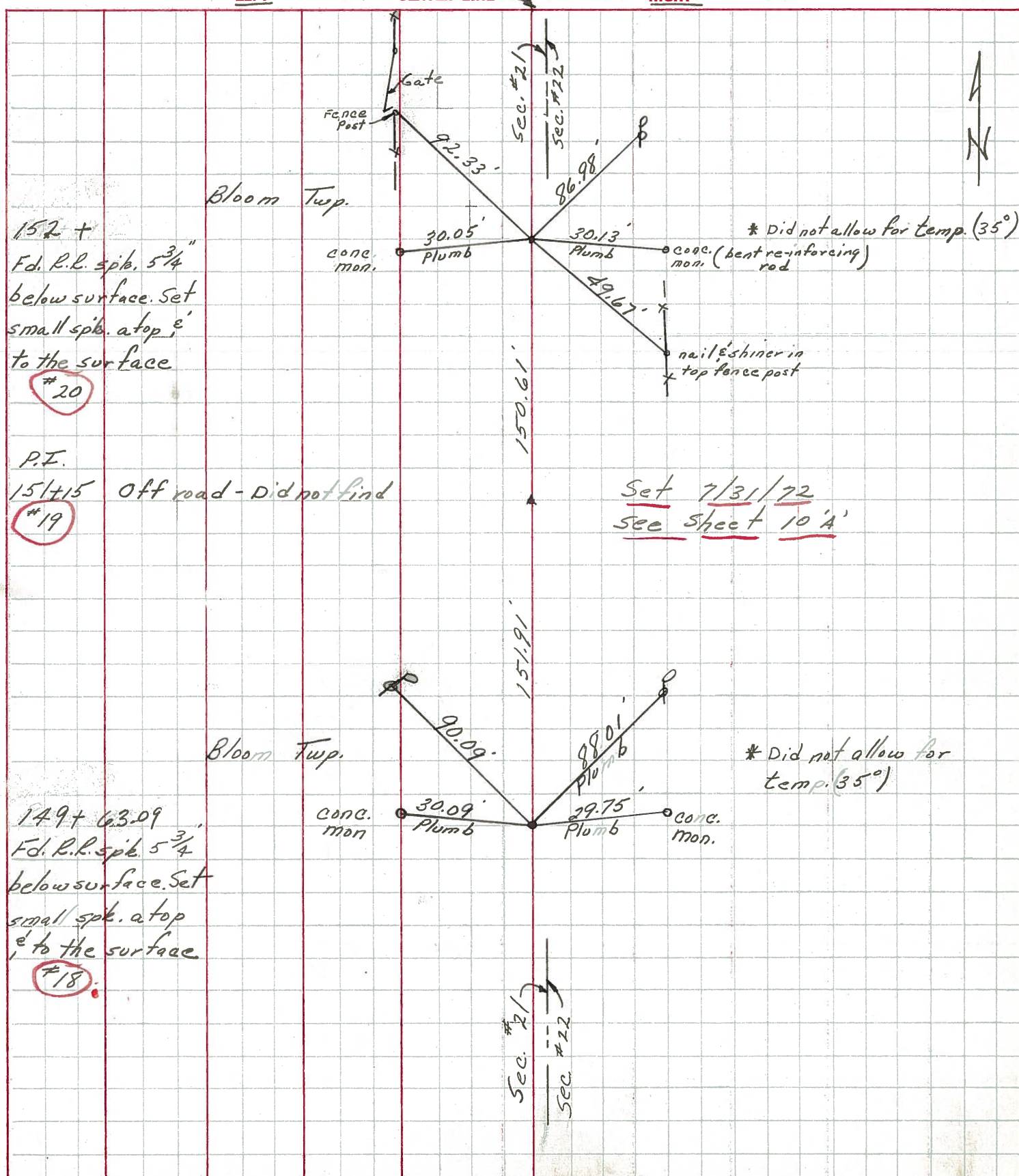
state Highway  
Cone. Mon. 30.09'  
Plomb 29.75' state Highway  
Cone. Mon.



S.S. #197

PERSONNEL TITLE PERSONNEL TITLE COUNTY Seneca DATE 11/12/72  
 Ash \_\_\_\_\_  
 Cronin \_\_\_\_\_ S. R. #19 WEATHER sunny-windy  
 Ripple \_\_\_\_\_  
 Anderson \_\_\_\_\_ SEC. \_\_\_\_\_ TEMP. 35°

DESCRIPTION Ties for Control Points - Sen. Co. line North to Bloomville JOB NO. \_\_\_\_\_



152 +  
 F.d. R.L. spk. 5 3/4"  
 below surface. Set  
 small spk. atop,  
 to the surface  
 #20

P.I.  
 151+15 Off road - Did not find  
 #19

149+ 63.09  
 F.d. R.L. spk. 5 3/4"  
 below surface. Set  
 small spk. atop  
 to the surface  
 #18