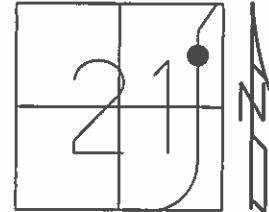


O.D.O.T. DISTRICT 2 SURVEY OFFICE (USE ONLY)

PERSONNEL _____ REFERENCE NO. 19 SHEET 22 OF 64
 NOTES RHOADES DATE 08-19-2015 ROUTE SR 19
 H.C. O'DONNELL WEATHER FAIR COUNTY SENECA
 R.C. RHOADES TEMP. 72°F TOWNSHIP BLOOM
 _____ SECTION 21
 _____ T 1 N R 16 E

TYPE MONUMENT 1" IPIN
~~ON SURFACE~~ - BELOW 3"
 LEFT - Q PAV'T - ~~RIGHT~~ 14'
4' TO RT EDGE PAVEMENT
 S.L.M. 151+10.72



Grid: Northing: 498954.5626 Easting: 1825713.1844

RECORD PI 17°58'40"
 STA 151+15
 FND I.P. 4' LT, LT EP
 3" BELOW SURFACE
 01-23-1984

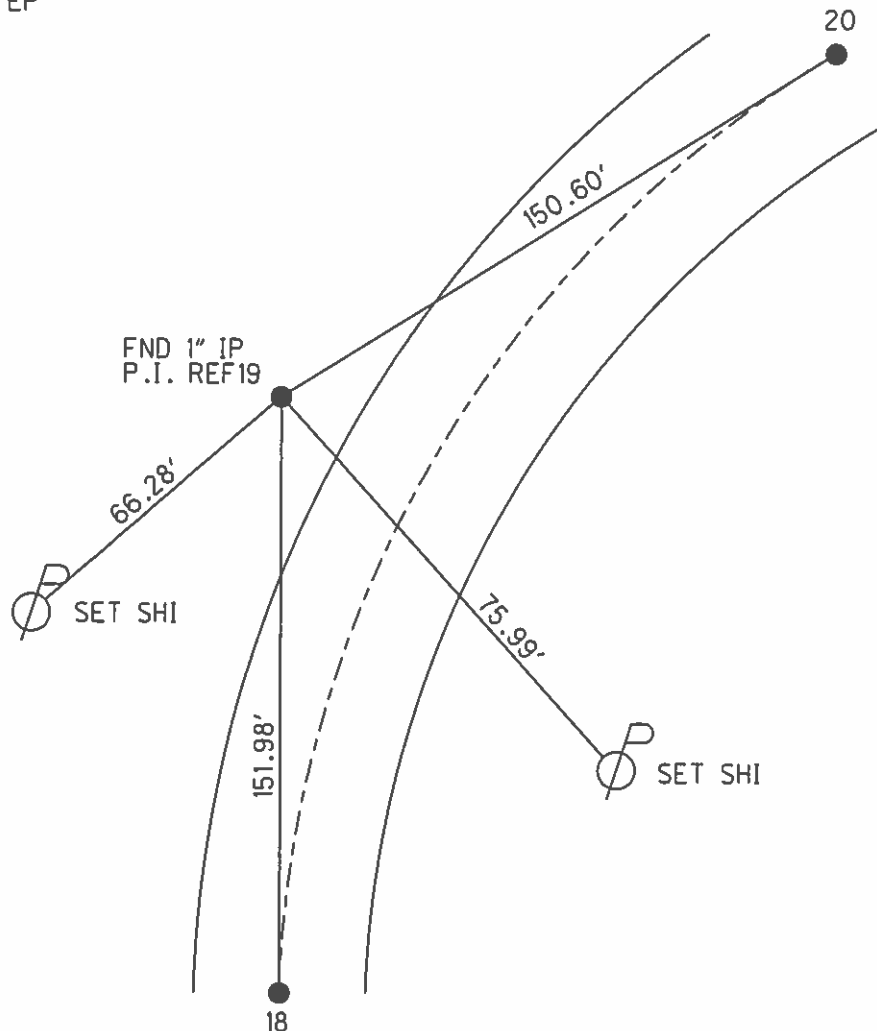
FND IP
 09-10-1992 RCC

FND IP
 08-23-07 MC

NEED TO DIG
 FND 1" IPIN
 GPS REF19
 12-31-13, TMR

GPS REF19
 08-18-2015, EBW

FND
 GPS, NEWREF19
 07-19-2016, JFO



O.D.O.T. DISTRICT 2 SURVEY OFFICE (USE ONLY)

PERSONNEL _____

REFERENCE NO. 19

SHEET 22 OF 62

NOTES CANTERBURY

DATE 04-13-06

ROUTE SR 19

H.C. MICKLOVICK

WEATHER FAIR

COUNTY SENECA

R.C. HOUDSHELL

TEMP. +66°

TOWNSHIP BLOOM

SECTION 21

T 1 N R 16 E

TYPE MONUMENT FD. 1" IRON PIN

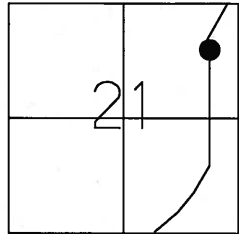
~~ON SURFACE~~ - BELOW 3" BELOW

LEFT - C PAV'T - ~~RIGHT~~ 14' LEFT

4' RT. TO LT. EDGE PAVEMENT

S.L.M. 151+12 (SV22)

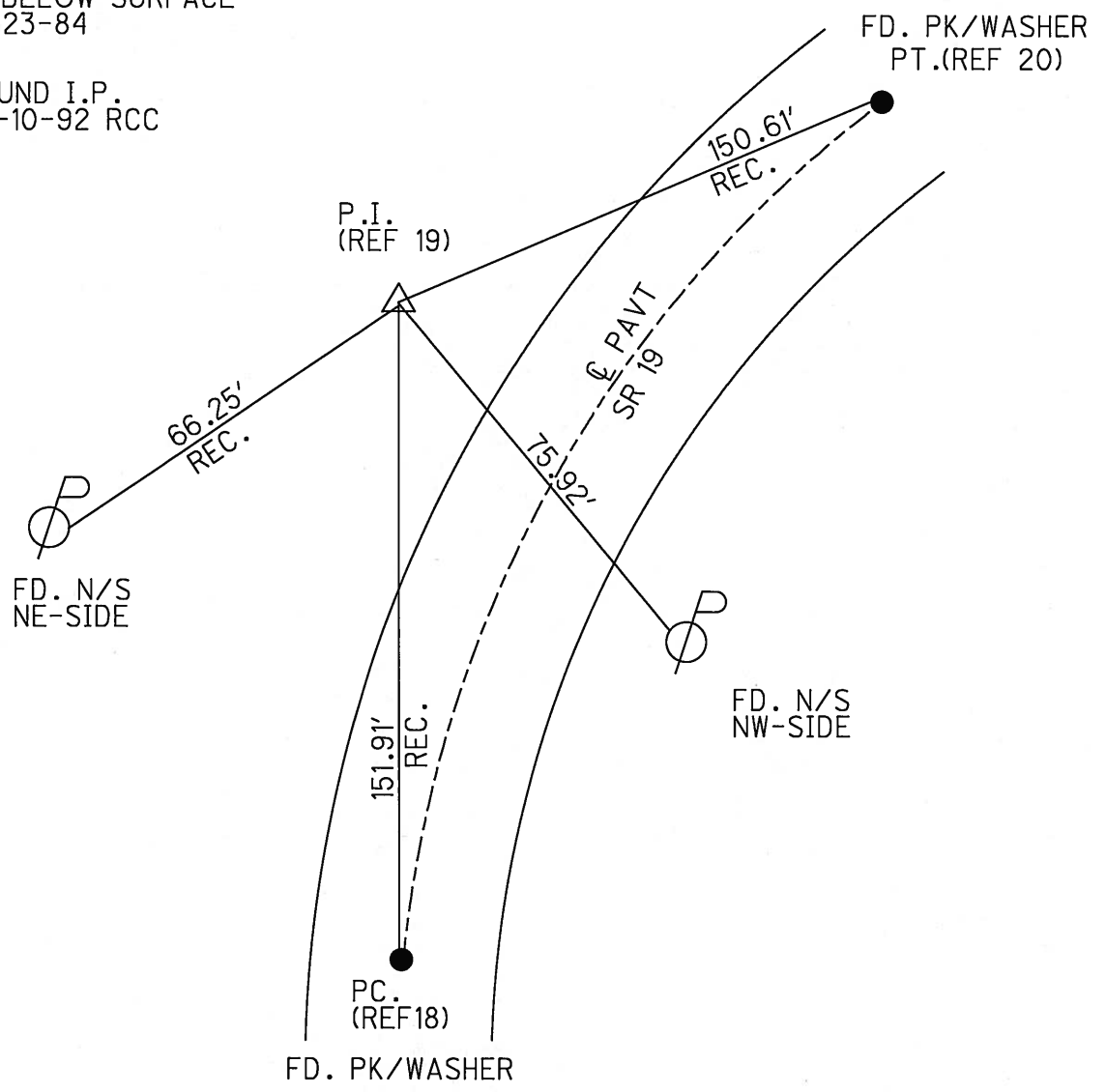
Grid: Northing: _____ Easting: _____



RECORD P.I. 17°58'40"
 STA. 151+15
 FD. I.P. 4' LT., LT. EP.
 3" BELOW SURFACE
 01-23-84

FOUND I.P.
 08-23-07 MC

FOUND I.P.
 09-10-92 RCC



O.D.O.T. DISTRICT 2 SURVEY OFFICE

PERSONNEL

REFERENCE NO. 19

SHEET 20 OF 53

NOTES RIPPLE

H.C. BARRON

DATE 6-22-1992

ROUTE #19

R.C. CHENEY

WEATHER CLOUDY

COUNTY SENECA

GEYMAN

TEMP. 66°

TOWNSHIP BLOOM

SECTION 21

T. NR 16 E

TYPE MONUMENT IRON ROD

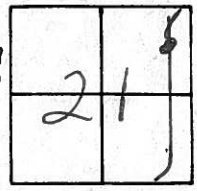
~~ON~~ SURFACE - BELOW 3"±

LEFT-~~C~~ PAV'T. - ~~RIGHT~~ 14'±

4'± TO LT. EDGE PAVEMENT

S.L.M. 151+15

FD. 6-22-1992
RCC.



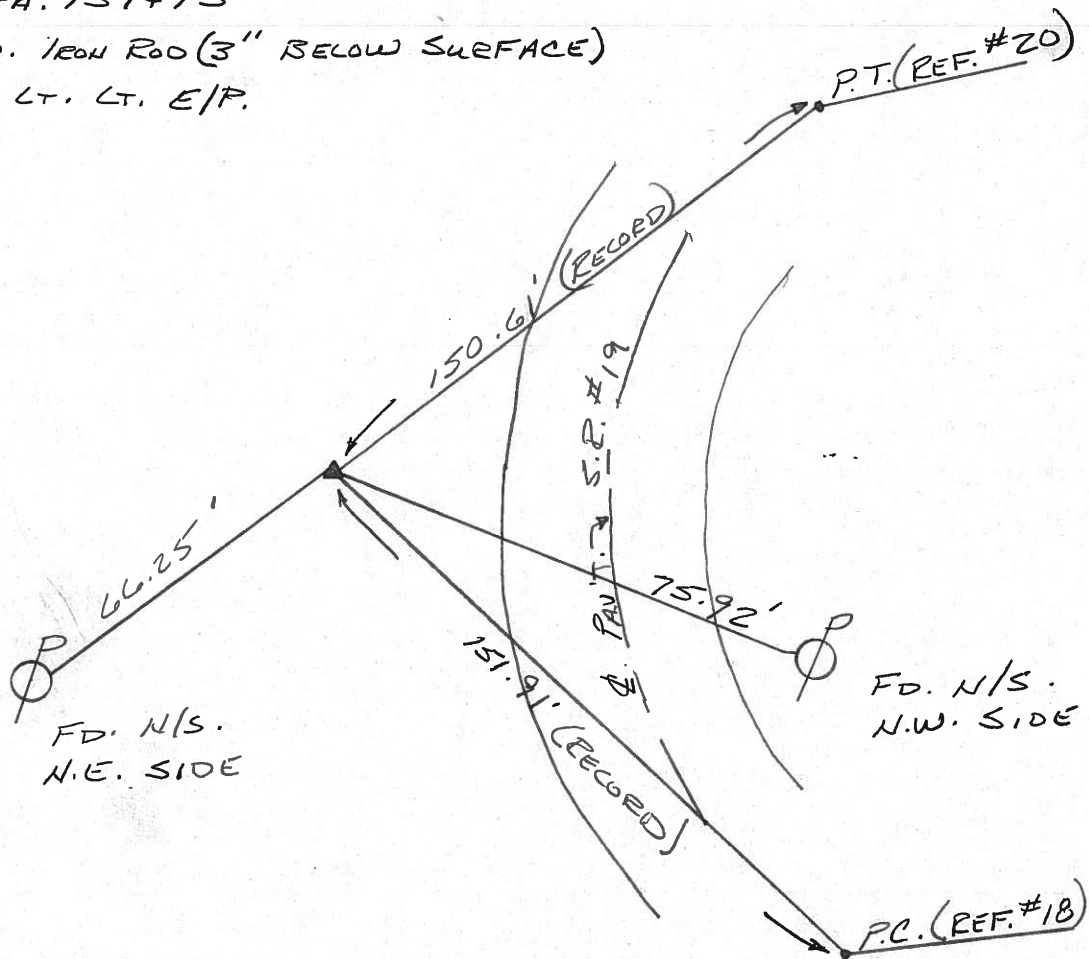
RECORDED: 1/23/84

P.I. Δ = 17° 58' 40" MEAS.

STA. 151+15

FD. IRON ROD (3" BELOW SURFACE)

4' LT. LT. E/P.



County Seneca S.R. #19

Date 1/23/84

Township Bloom

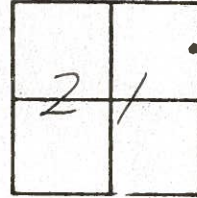
Weather overcast - windy

Section 21

Temp. 24°

T/N, R/E

Personnel Cronin



(19)

Ripple
Geyman
Barbour

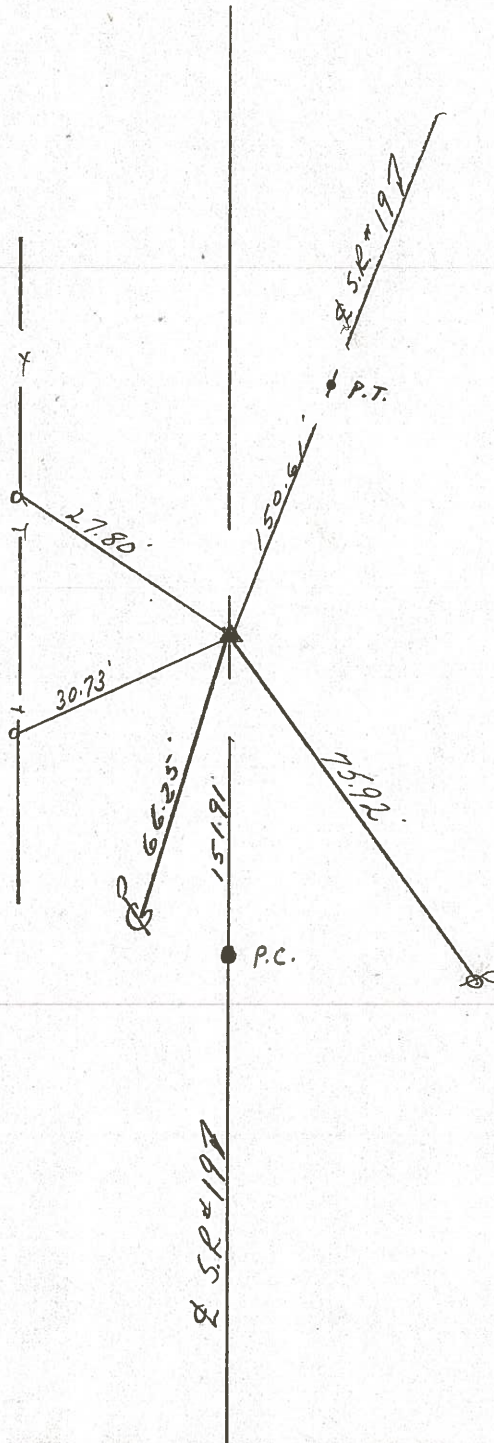
P.I. $\Delta = 17^{\circ}58'40''$ Lt. Meas

151+15

Found Iron rod 3"

below surface 4' Lt.

Left Edge of Point.



SR # 197

County SENECA S.R. 19

Date 7/16/79

Township Bloom

Weather sunny

Section 21

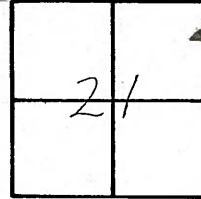
Temp. 85°

T/LN, R/L E

Personnel Cronin

Ripke

Geyman



19

?



$\Delta = 17^{\circ}58'40''$ Rt

P.I

151415

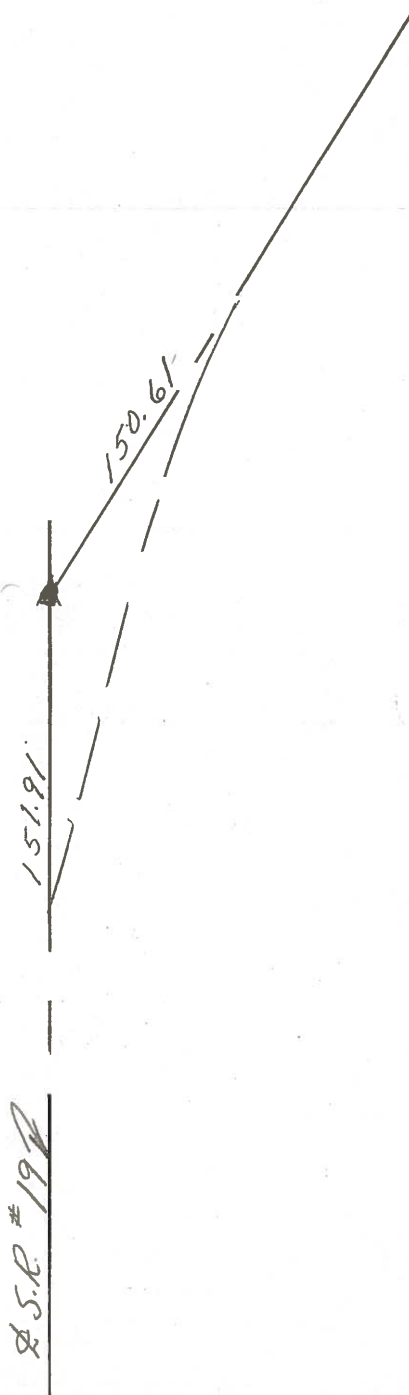
Ed. Iron rod

4' Lt. of Lt. Edge of

Pavement

SEE SHEET 10-R

7/31/72



S.S.R. # 192

PERSONNEL	TITLE	PERSONNEL	TITLE
Ash			
Cronin			
Ripple			
Anderson		Vinson	

COUNTY Seneca

S. R. # 19

WEATHER Sunny

SEC.

TEMP. 70°

DESCRIPTION Ties for Control Points - Sen. Co. Line North to Bloomville JOB NO.

LEFT

CENTER LINE

RIGHT



19

?
Bloom Twp

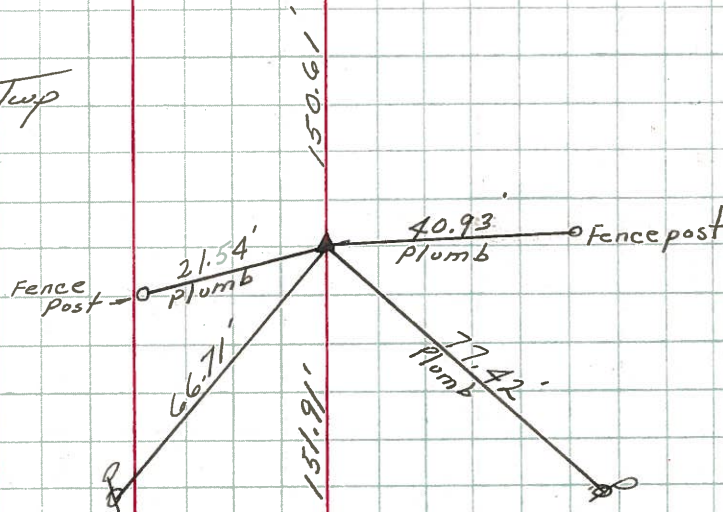
$\Delta = 17^{\circ} 58' 40''$ Rt.

P.I

151+15

Set iron pin by using points on back & fwd. tangents & intersecting them

Points we considered to be P.C. & P.T. do not quite check out.



PERSONNEL TITLE PERSONNEL TITLE

COUNTY Seneca

DATE 11/12/72

Ash
Cronin
Ripple
Anderson

S. R. # 19

WEATHER sunny-windy

SEC.

TEMP. 35°

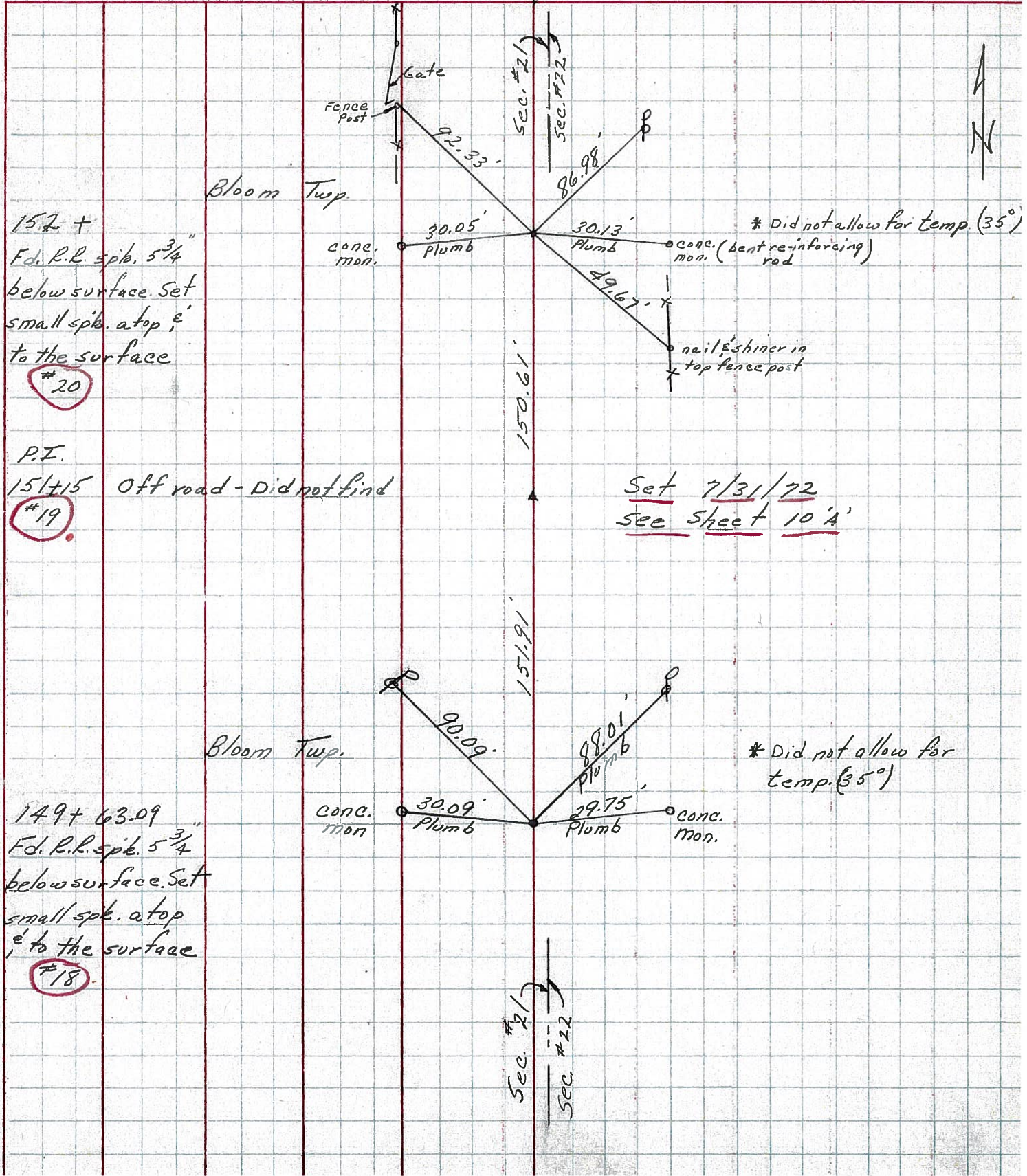
DESCRIPTION Ties for Control Points - Sen. Co. Line North to Bloomville

JOB NO.

LEFT

CENTER LINE

RIGHT



152 +
F.d. R.R. spk. 5 3/4"
below surface. Set
small spk. at top &
to the surface

#20

P.I.
151+15 Off road - Did not find

#19

Set 7/31/72
see sheet 10'A

149+ 63.09
F.d. R.R. spk. 5 3/4"
below surface. Set
small spk. at top
& to the surface

#18

* Did not allow for
temp. (35°)

PERSONNEL TITLE PERSONNEL TITLE

Schneider
Mossier
Barbour
Potts

COUNTY Seneca DATE 7-28-69

S. R. 19 WEATHER Fair

SEC. Co. Line to Bloomville TEMP. 75°

DESCRIPTION Tie for control Points

JOB NO.

LEFT CENTER LINE RIGHT

