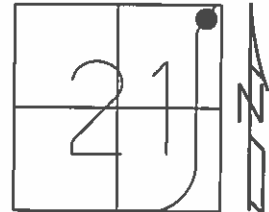


O.D.O.T. DISTRICT 2 SURVEY OFFICE (USE ONLY)

PERSONNEL \_\_\_\_\_ REFERENCE NO. 20 SHEET 23 OF 64  
 NOTES RHOADES DATE 08-18-2015 ROUTE SR 19  
 H.C. O'DONNELL WEATHER CLOUDY COUNTY SENECA  
 R.C. RHOADES TEMP. 74°F TOWNSHIP BLOOM  
 \_\_\_\_\_ SECTION 21  
 \_\_\_\_\_ T 1 N R 16 E

TYPE MONUMENT PK & WASHER  
 ON SURFACE - ~~BELOW~~ ON  
 LEFT - ☉ PAV'T - ~~RIGHT~~ 2'  
8.0' TO LT EDGE PAVEMENT  
 S.L.M. 152+61.32



Grid: Northing: 499102.9231 Easting: 1825739.0611

RECORD PT STA 152+65  
 SET PK & WASHER ATOP  
 BOAT SPIKE ATOP  
 RR. SPK 8" BELOW  
 SURFACE 01-23-1984

SET PK & WASHER  
 09-10-1992 RCC

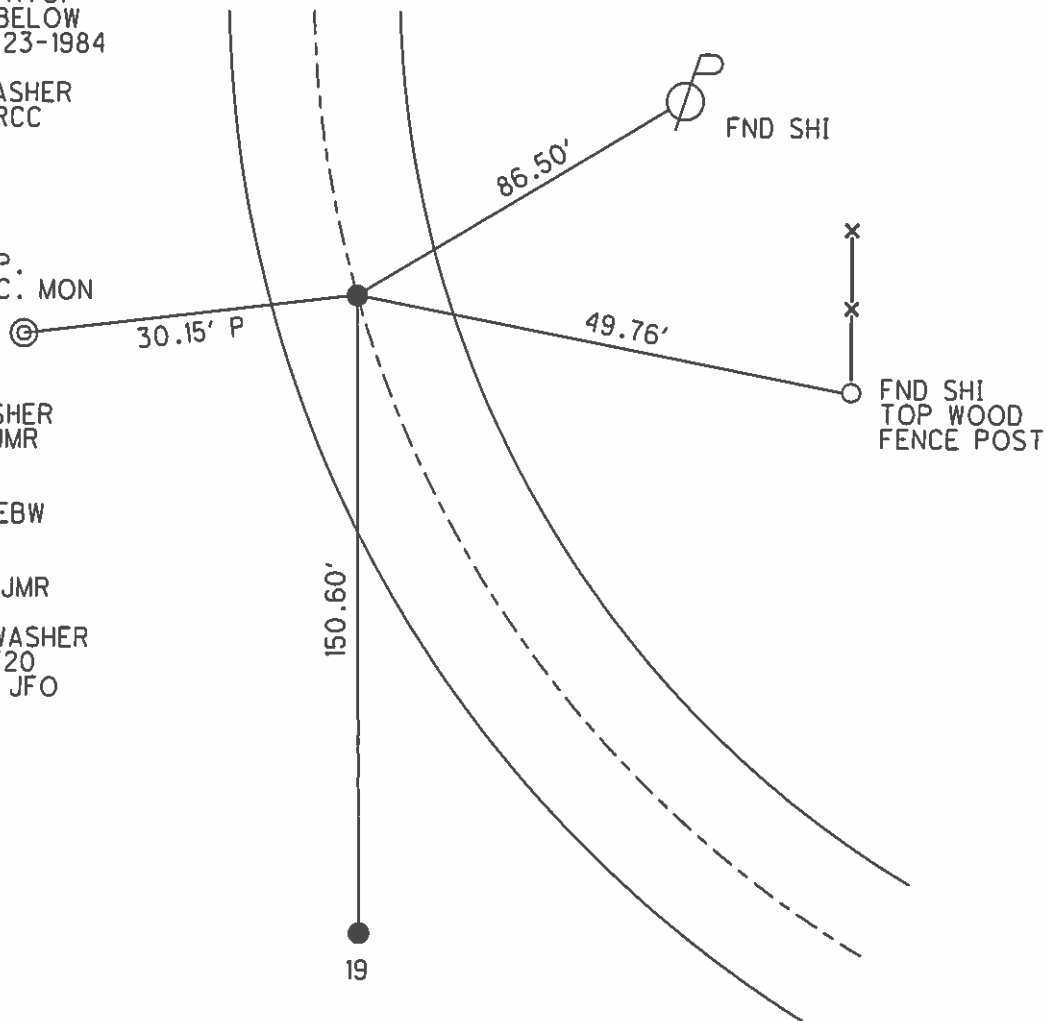
FND TOP IP.  
 ODOT CONC. MON

FD PK & WASHER  
 12-05-2013 JMR

GPS REF20  
 01-13-2014, EBW

GPS REF20  
 08-18-2015, JMR

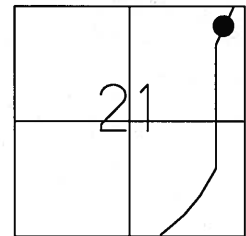
SET MAG & WASHER  
 GPS, NEWREF20  
 07-20-2016, JFO



O.D.O.T. DISTRICT 2 SURVEY OFFICE (USE ONLY)

PERSONNEL	REFERENCE NO. <u>20</u>	SHEET <u>23</u> OF <u>62</u>
NOTES <u>CANTERBURY</u>	DATE <u>04-14-06</u>	ROUTE <u>SR 19</u>
H.C. <u>MICKLOVICK</u>	WEATHER <u>CLOUDY</u>	COUNTY <u>SENECA</u>
R.C. <u>HOUESHELL</u>	TEMP. <u>+60°</u>	TOWNSHIP <u>BLOOM</u>
		SECTION <u>21</u>
		T <u>1</u> N R <u>16</u> E

TYPE MONUMENT FD. PK./WASHER  
 ON SURFACE - ~~BELOW~~ ON SURFACE  
 LEFT - C PAV'T - ~~RIGHT~~ 2' LT.  
8.0' TO LT. EDGE PAVEMENT  
 S.L.M. 152+59 (SV23)



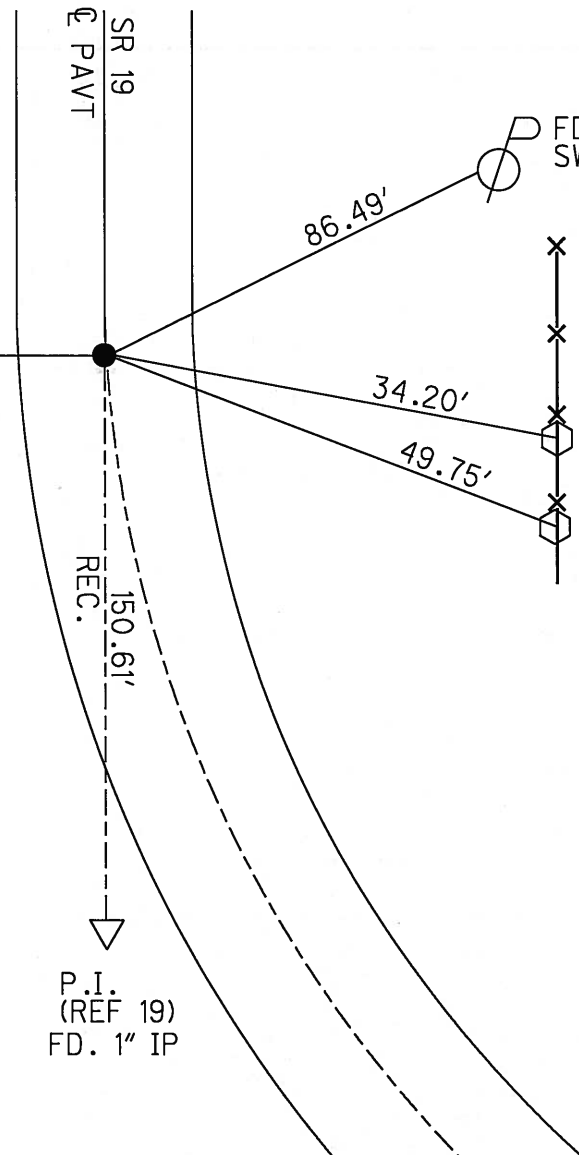
Grid: Northing: \_\_\_\_\_ Easting: \_\_\_\_\_

RECORD PT. STA. 152+65  
 SET PK./WASHER ATOP  
 PK./WASHER ATOP  
 BOAT SPIKE ATOP  
 RR. SPK. 8" BELOW  
 SURFACE 01-23-84

SET PK/WASHER  
 09-10-92 RCC

FD. TOP IP.  
 ODOT CONC. MON.

⊙ 30.05'P



SET N/S  
 TOP WOOD  
 FENCE POSTS

# O.D.O.T. DISTRICT 2 SURVEY OFFICE

PERSONNEL

REFERENCE NO. 20

SHEET 21 OF 53

NOTES RIPPLE

H.C. BARBOUR

DATE 6-22-1992

ROUTE #19

R.C. CHENEY

WEATHER CLOUDY

COUNTY SENECA

GEYMAN

TEMP. 66°

TOWNSHIP BLOOM

SECTION 21

T 1 N R 16 E

TYPE MONUMENT P.K./WASHER

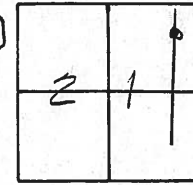
ON SURFACE - BELOW YES

LEFT-☉ PAV'T. - RIGHT 2'

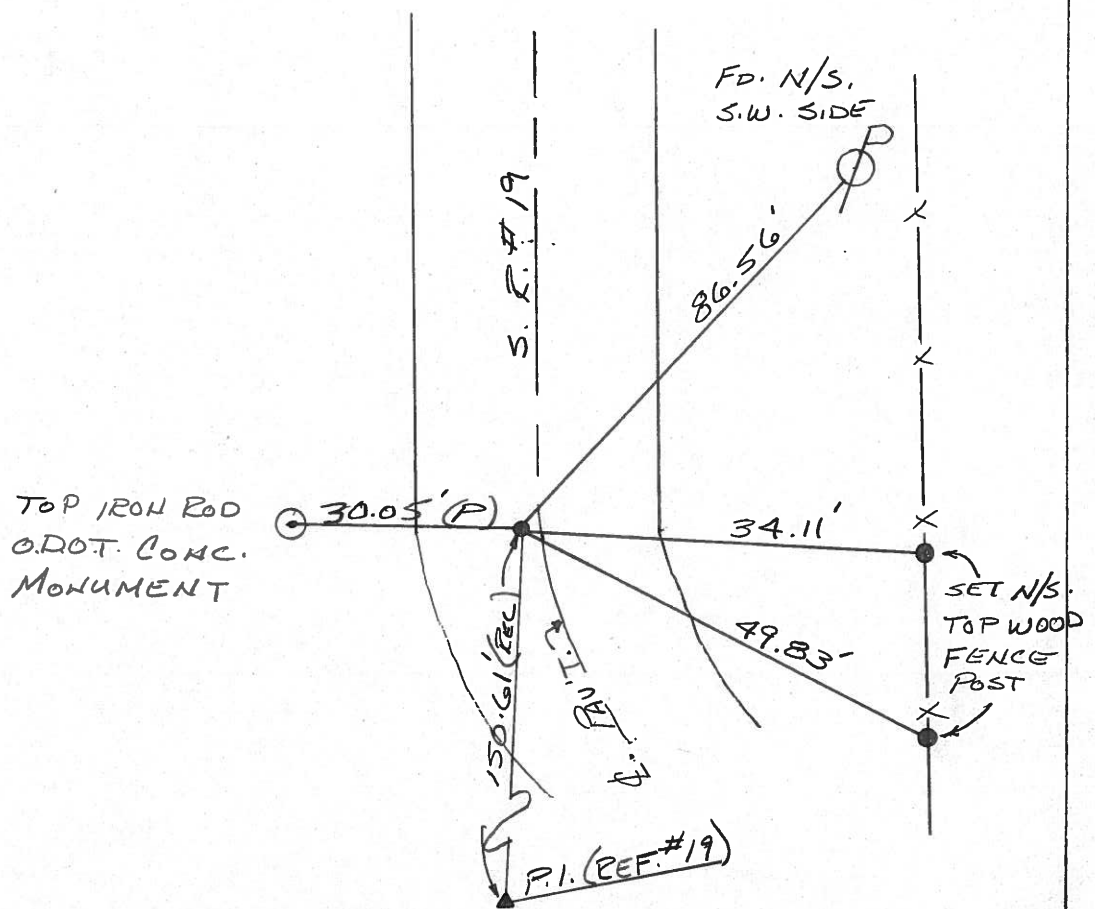
8' TO LT. EDGE PAVEMENT

S.L.M. 152+64

SET P.K./WASHER  
 9-10-1992  
 RLL



RECORD; 1/23/84  
 P.T. STA. 152+65 ±  
 SET P.K./WASHER ATOP  
 P.K./WASHER ATOP  
 BOAT SPIK. ATOP  
 R.E. SPIK. (8" BELOW SURFACE)



County Seneca S.R. # 19

Date 1/23/84

Township Bloom

Weather overcast - windy

Section 21

Temp. 24°

T1N, R16E

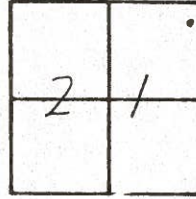
Personnel Cronin

Rippk

Geyman

Barbour

20

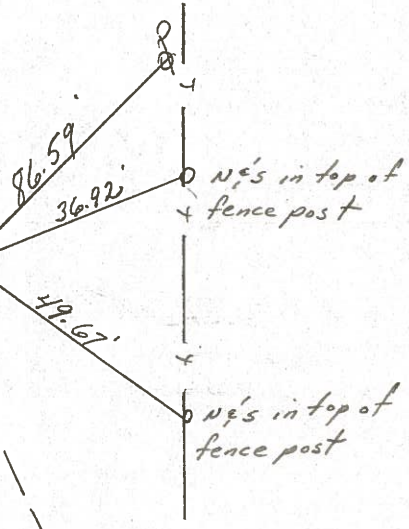


152+65±  
 Set P.K. & washer atop P.K. &  
 washer atop boat spike atop  
 R.R. spike (8" below surface)  
 1 1/2' Lt. & Permit.

State Hwy  
conc. Mon.

30.05'  
Plumbed

S.R. # 19



N's in top of  
fence post

N's in top of  
fence post

County SENECA S.R. 19

Date 7/16/79

Township BLOOM

Weather sunny

Section 21

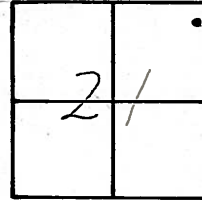
Temp. 80°

T1N, R16E

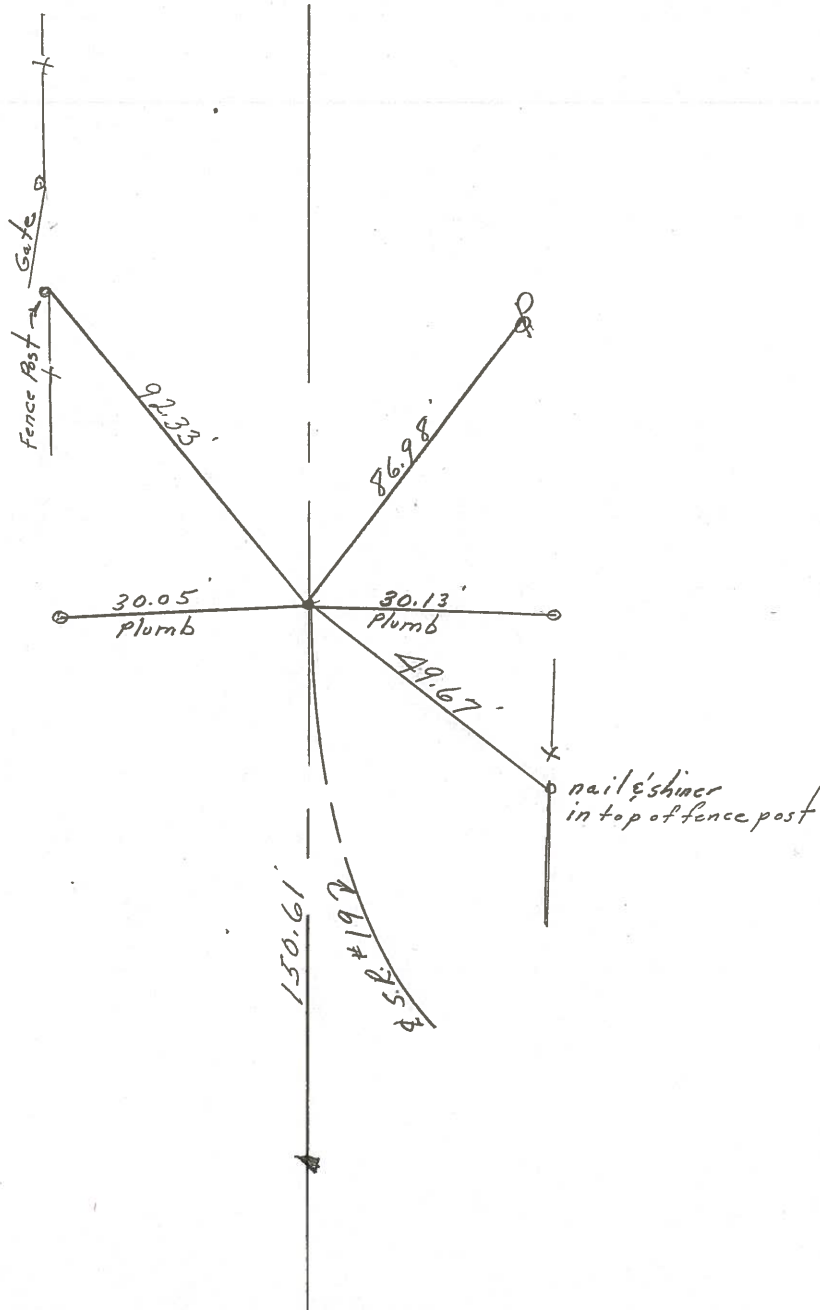
Personnel Cronin

Rippe

Geyman



20

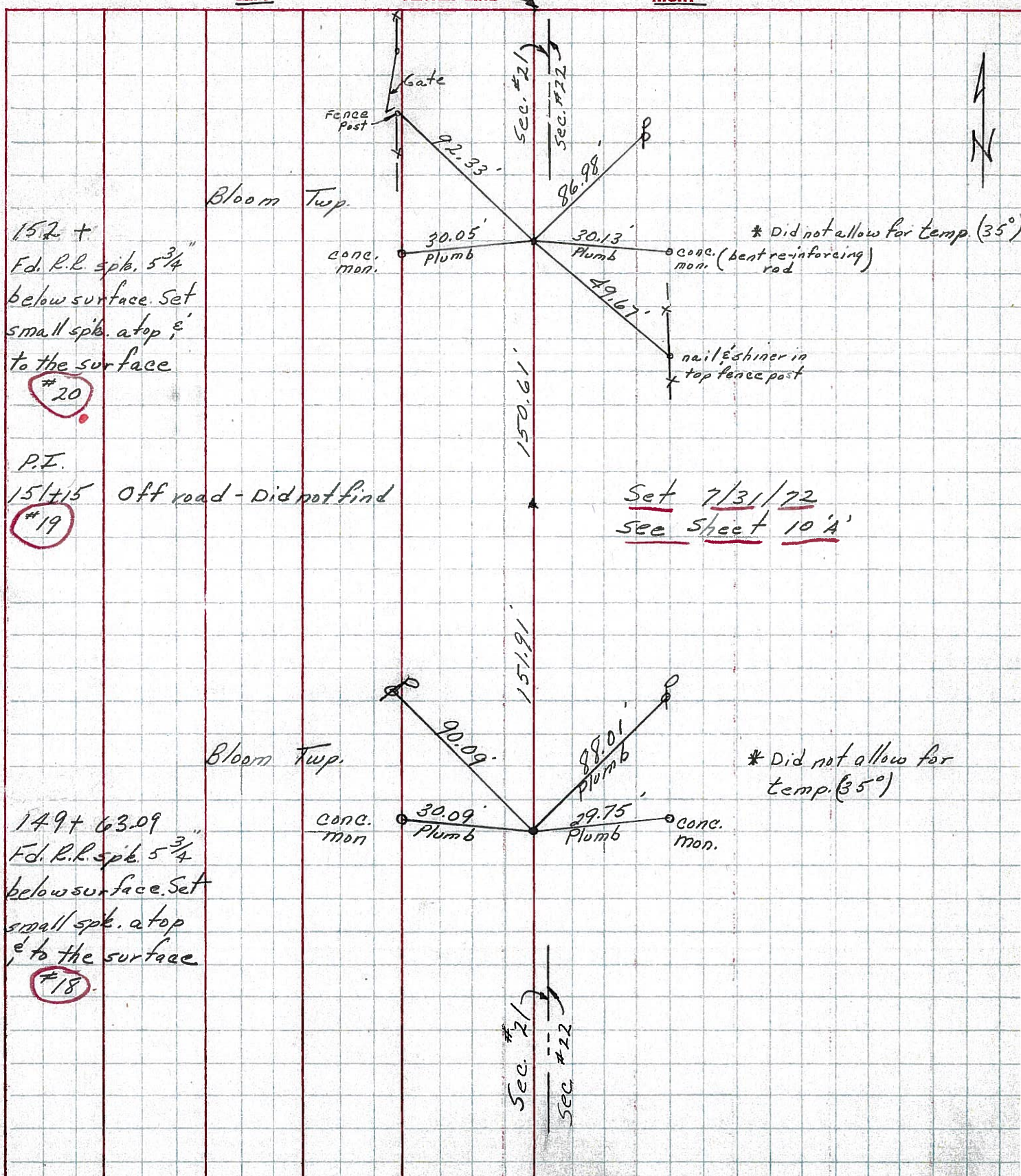


152 + 65 ±  
1" d. bolt spike 1" below  
surface. R.R. spike below  
1 3/4" below surface.  
2" P.K. & washer on surface



PERSONNEL	TITLE	PERSONNEL	TITLE	COUNTY	DATE	WEATHER	TEMP.
Ash				Seneca	11/12/72	sunny & windy	35°
Cranin				S. R. #19			
Ripple							
Anderson							

DESCRIPTION Ties for Control Points - Sen. Co. Line North to Bloomville JOB NO. \_\_\_\_\_



152 +  
F.d. R.L. spk. 5 3/4"  
below surface. Set  
small spk. at top &  
to the surface  
#20

P.I.  
151415 Off road - Did not find  
#19

149 + 63.09  
F.d. R.L. spk. 5 3/4"  
below surface. Set  
small spk. at top  
& to the surface  
#18

\* Did not allow for temp. (35°)  
conc. mon. (bent re-inforcing rod)

Set 7/31/72  
see sheet 10 'A'

\* Did not allow for temp. (35°)  
conc. mon.

Sec. #21  
Sec. #22