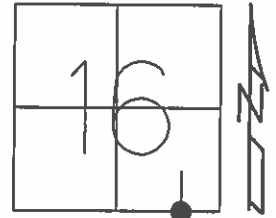


O.D.O.T. DISTRICT 2 SURVEY OFFICE (USE ONLY)

PERSONNEL _____ REFERENCE NO. 22 SHEET 25 OF 64
 NOTES RHOADES DATE 08-18-2015 ROUTE SR 19
 H.C. O'DONNELL WEATHER CLOUDY COUNTY SENECA
 R.C. RHOADES TEMP. 78°F TOWNSHIP BLOOM
 SECTION 16
 T 1 N R 16 E

TYPE MONUMENT PK & WASHER
 ON SURFACE - ~~BELOW~~ ON _____
 LEFT - ☉ PAV'T - ~~RIGHT~~ 4.0', (6'N TR 58)
6.0' TO LT EDGE PAVEMENT
 S.L.M. 160+65.55
 Grid: Northing: 499895.3558 Easting: 1825876.3850



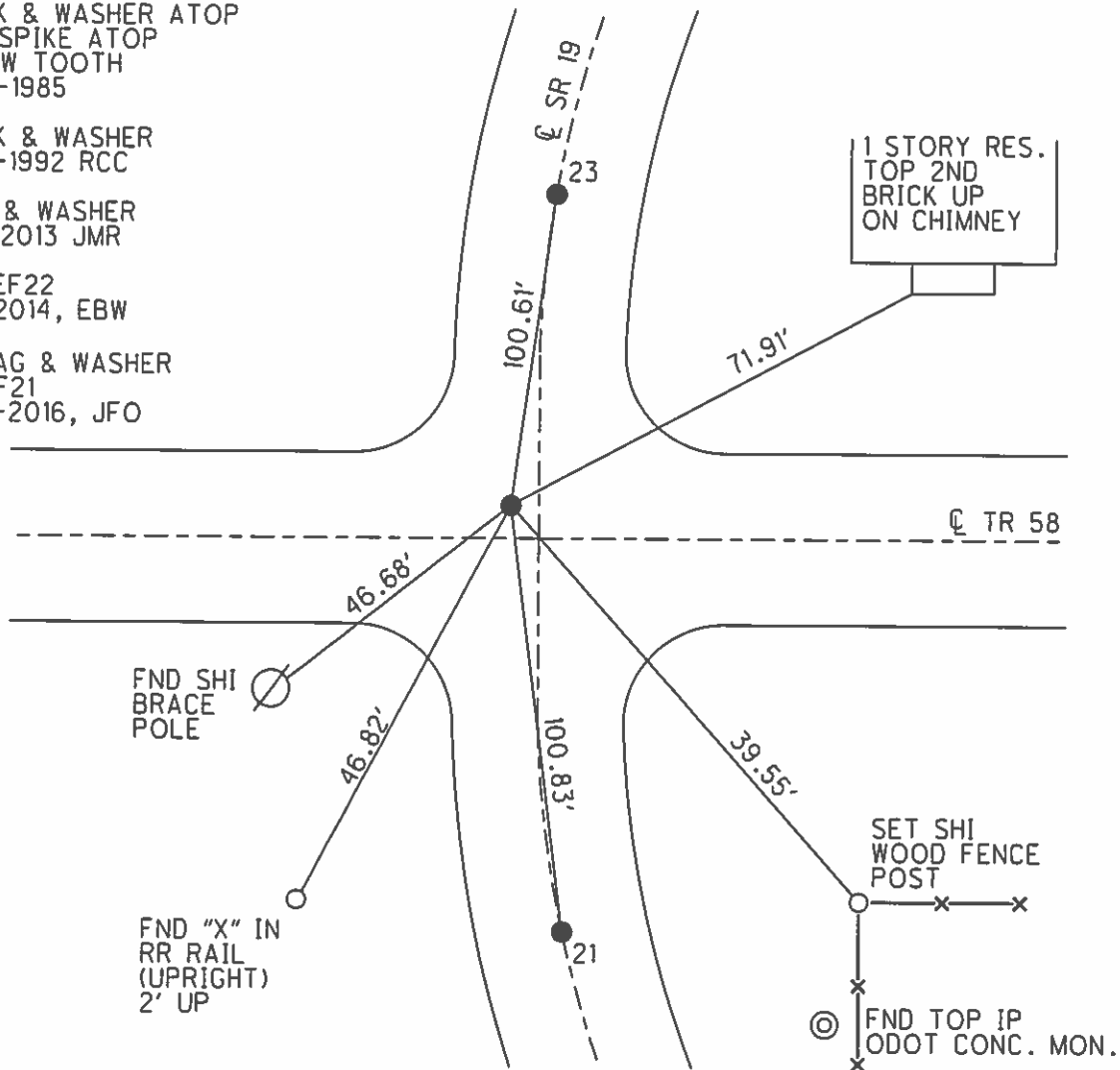
RECORD PI STA 161+09
 SET PK & WASHER ATOP
 BOAT SPIKE ATOP
 HARROW TOOTH
 09-20-1985

SET PK & WASHER
 09-24-1992 RCC

FD PK & WASHER
 12-05-2013 JMR

GPS REF22
 01-13-2014, EBW

SET MAG & WASHER
 NEWREF21
 07-20-2016, JFO



O.D.O.T. DISTRICT 2 SURVEY OFFICE (USE ONLY)

PERSONNEL _____

REFERENCE NO. 22

SHEET 25 OF 62

NOTES CANTERBURY

DATE 04-14-06

ROUTE SR 19

H.C. MICKLOVICK

WEATHER CLOUDY

COUNTY SENECA

R.C. HOUESHELL

TEMP. +66°

TOWNSHIP BLOOM

SECTION 16

T 1 N R 16 E

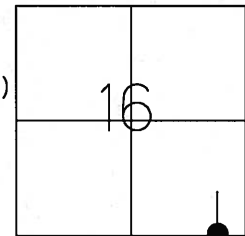
TYPE MONUMENT FD. PK./WASHER

ON SURFACE - ~~BELOW~~ ON SURFACE

LEFT - C PAV'T - ~~RIGHT~~ 4.0' LT. SR#19 (6'N TR #58 WEST)
6.0' TO LT. EDGE PAVEMENT

S.L.M. 160+62 (SV25)

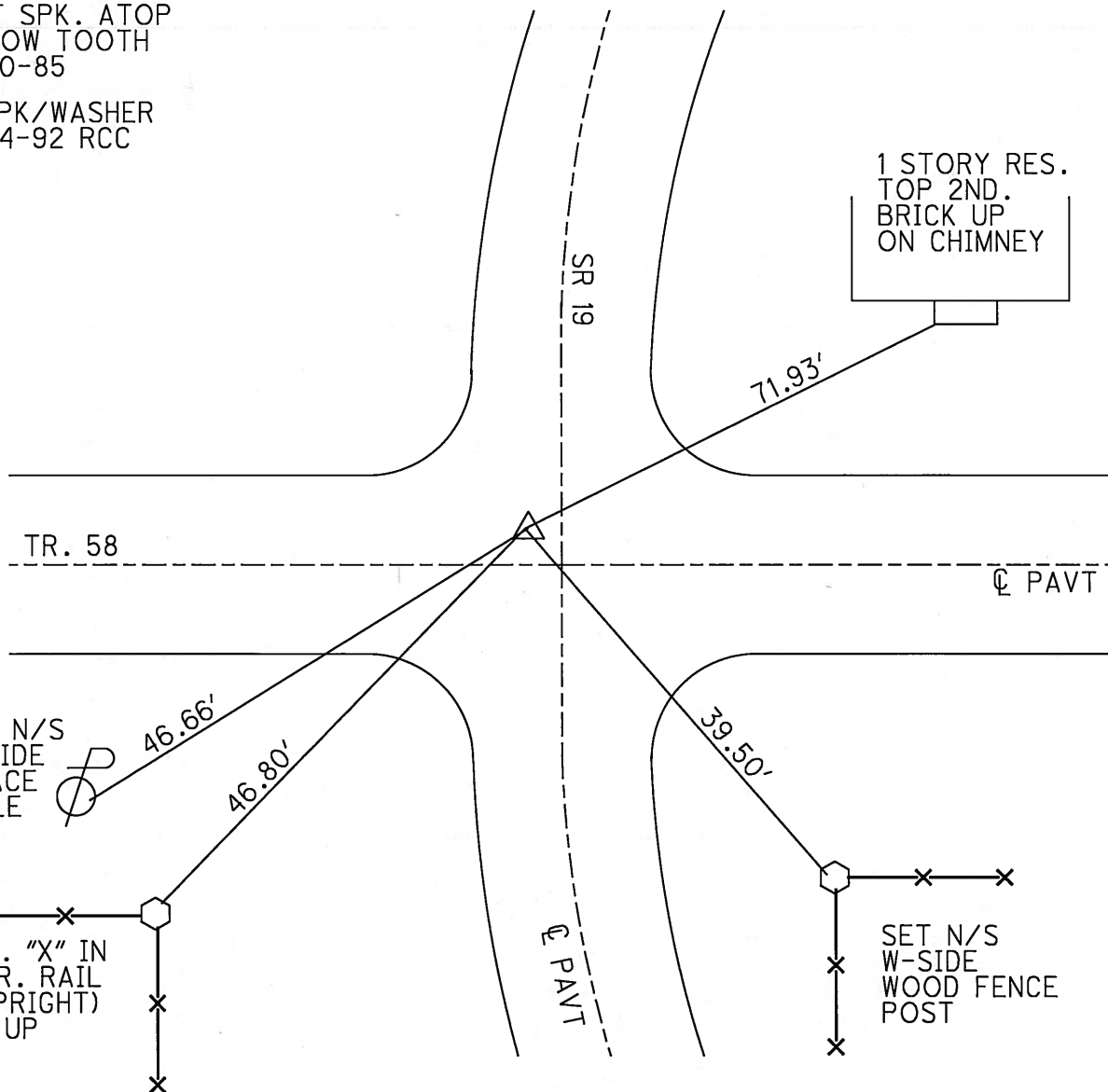
Grid: Northing: _____ Easting: _____



RECORD P.I. STA. 161+09
 PK./WASHER ATOP
 BOAT SPK. ATOP
 HARROW TOOTH
 09-20-85

SET PK/WASHER
 09-24-92 RCC

1 STORY RES.
 TOP 2ND.
 BRICK UP
 ON CHIMNEY



O.D.O.T. DISTRICT 2 SURVEY OFFICE

PERSONNEL

REFERENCE NO. 22

SHEET 23 OF 53

NOTES TRIPPLE

H.C. BARBOUR

DATE 6-22-1992

ROUTE #19

R.C. CHENEY

WEATHER CLOUDY

COUNTY SENECA

GEYMAN

TEMP. 66°

TOWNSHIP BLOOM

SECTION 16

T. 1 N. R. 16 E

TYPE MONUMENT PK/WASHER

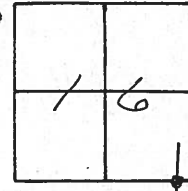
ON SURFACE - BELOW YES

LEFT-☉ PAV'T. - RIGHT 4'±

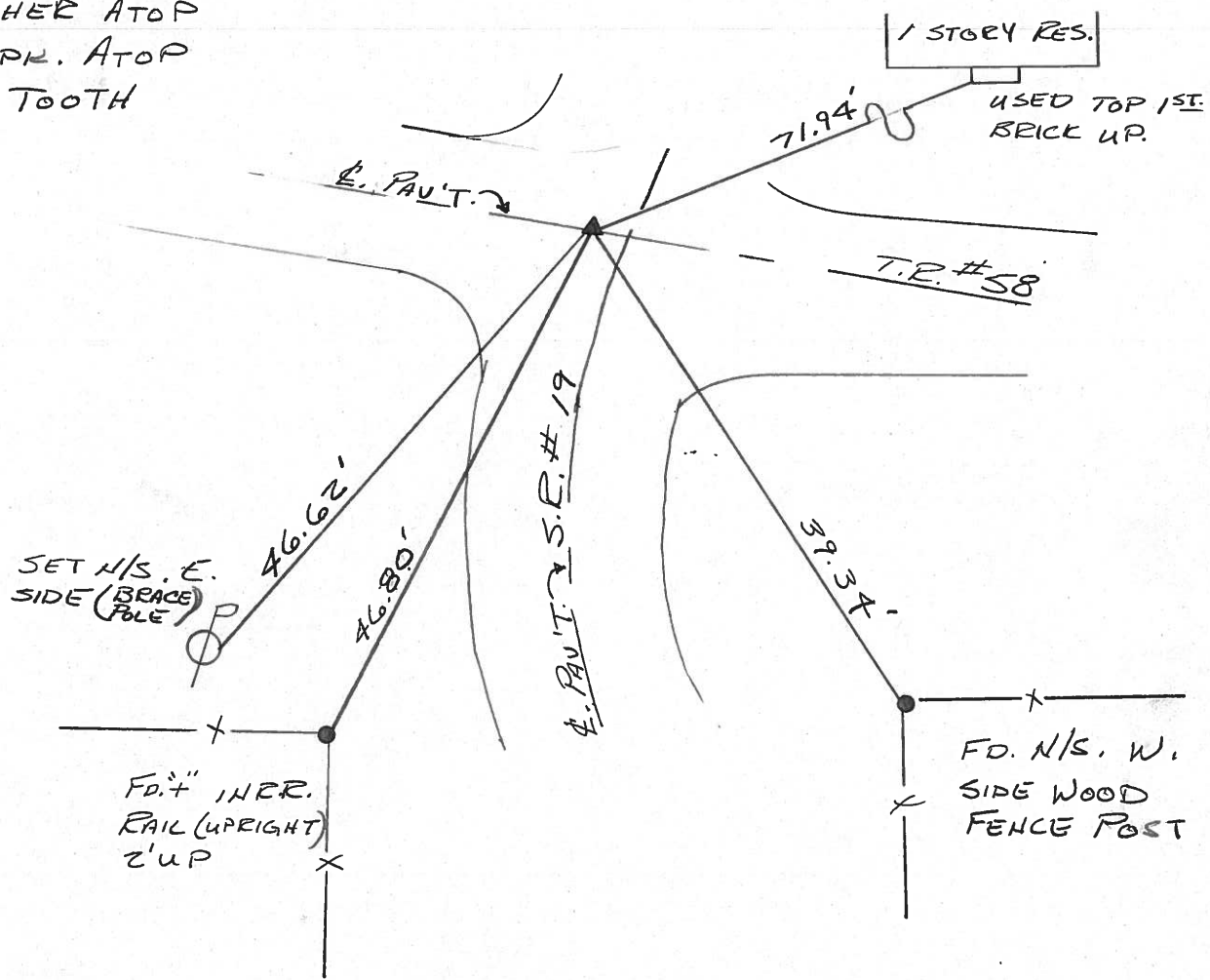
6'± TO LT. EDGE PAVEMENT

S.L.M. 160+68

SET PK/WASHER
9-24-92
R.C.C.



RECORD: 9/20/85
P.I. STA. 161+09
PK/WASHER ATOP
BOAT SPR. ATOP
HARROW TOOTH



County Seneca S.R. #19

Date 9/20/85

Township Bloom

Weather SUNNY

Section 16

Temp. 75°

T 1 N, R 6 E

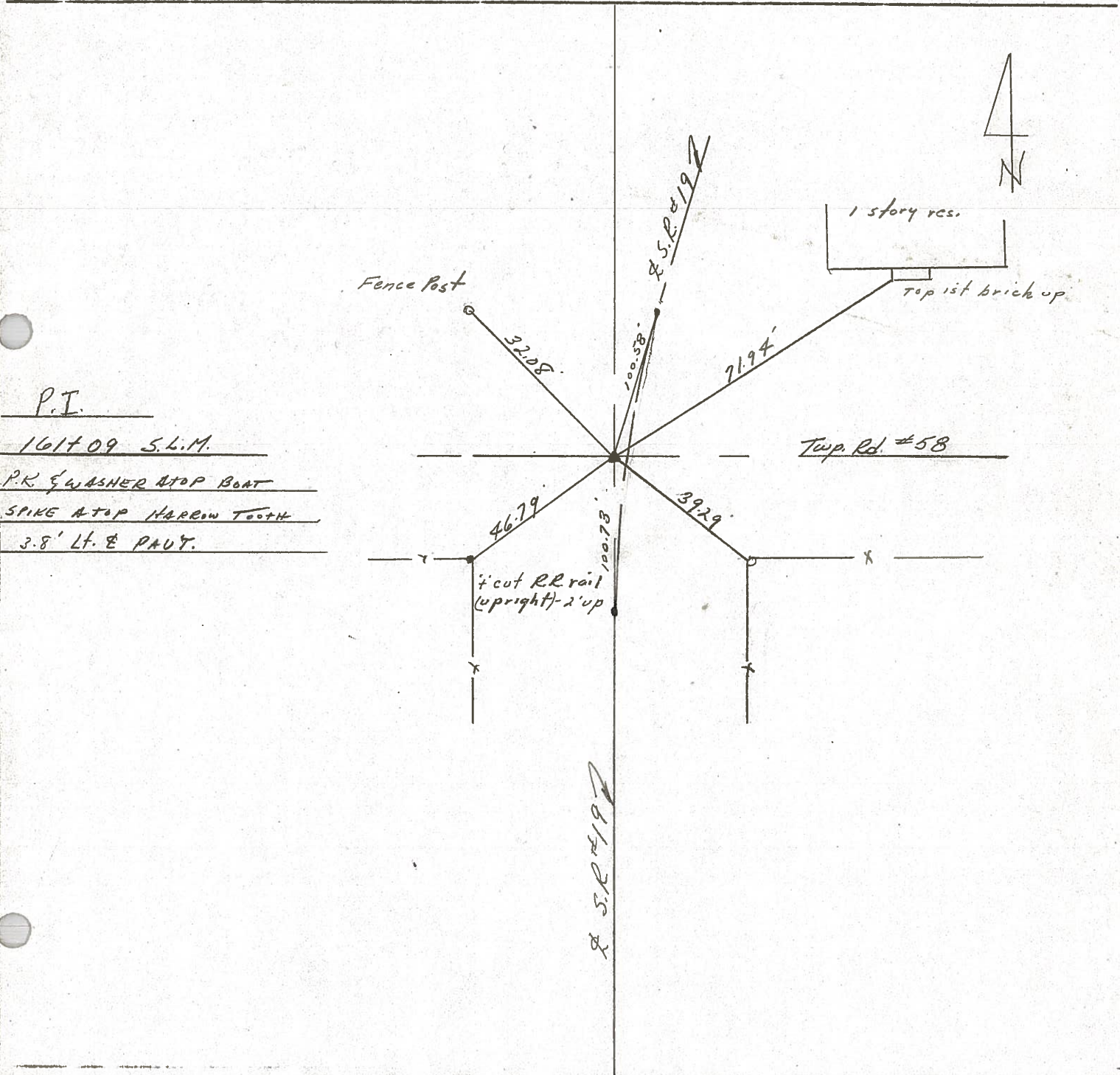
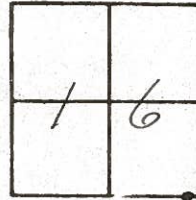
Personnel Cronin

Ripple

Geyman

Barbour

22



P.I.

161709 S.L.M.

P.K. & WASHER ATOP BENT

SPIKE ATOP NARROW TOOTH

3.8' Lt. & PAUT.

Twp. Rd. #58

& S.R. #19

County SENECA S.R. 19

Date 7/16/79

Township BLOOM

Weather sunny

Section 16

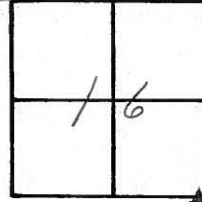
Temp. 87°

T1N, R16E

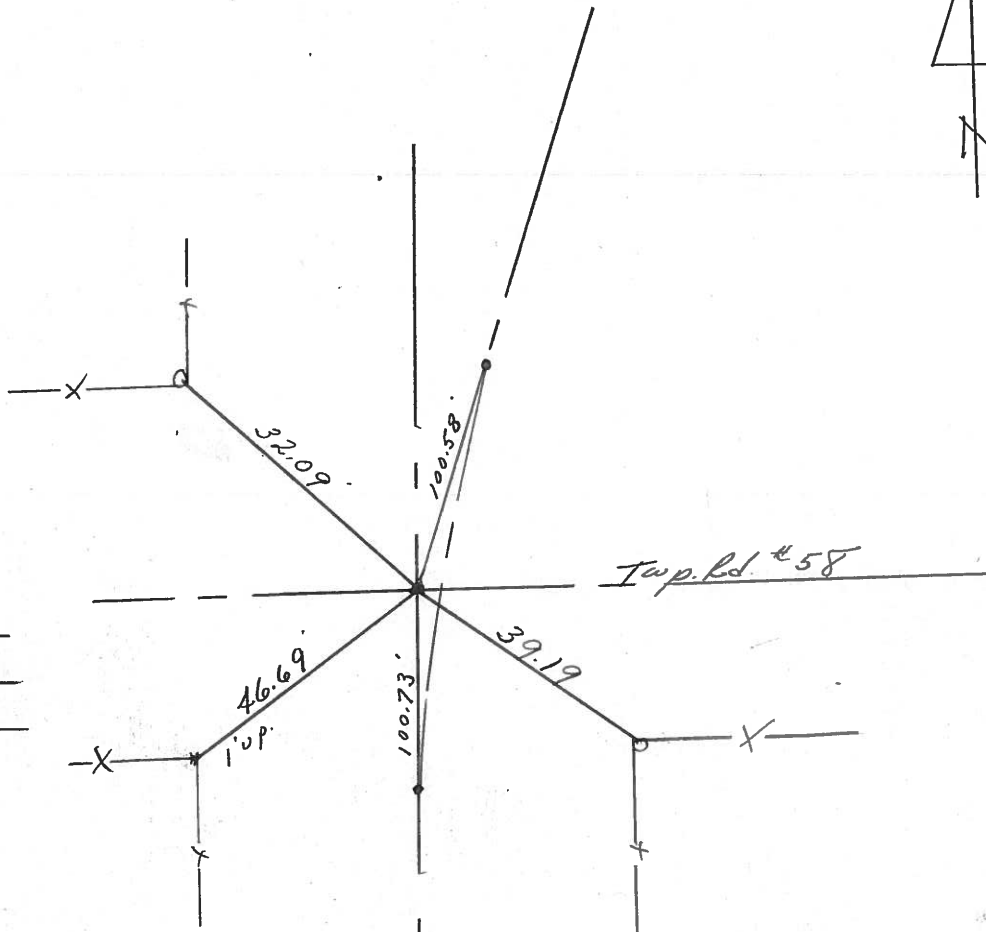
Personnel Cronin

Ripple

Geyman



22



P.I.
2d. bolt spike 1" below
surface. Harrow tooth below
4 3/4" below surface

S.R. #199

PERSONNEL	TITLE	PERSONNEL	TITLE	COUNTY	DATE	WEATHER	TEMP
Ash				Seneca	1/12/72	sunny - windy	35°
Cronin				S. R. #19			
Ripple							
Anderson							

DESCRIPTION Ties for Control Points - Sen. Co. Line North to Bloomville JOB NO. _____

