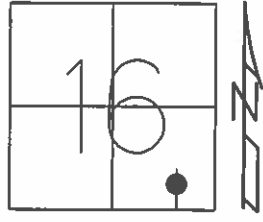


O.D.O.T. DISTRICT 2 SURVEY OFFICE (USE ONLY)

PERSONNEL	REFERENCE NO.	<u>25</u>	SHEET	<u>28</u>	OF	<u>64</u>
NOTES	<u>RHOADES</u>	DATE	<u>08-19-2015</u>	ROUTE	<u>SR 19</u>	
H.C.	<u>O'DONNELL</u>	WEATHER	<u>FAIR</u>	COUNTY	<u>SENECA</u>	
R.C.	<u>RHOADES</u>	TEMP.	<u>72°F</u>	TOWNSHIP	<u>BLOOM</u>	
				SECTION	<u>16</u>	
				T	<u>1</u>	N
				R	<u>16</u>	E

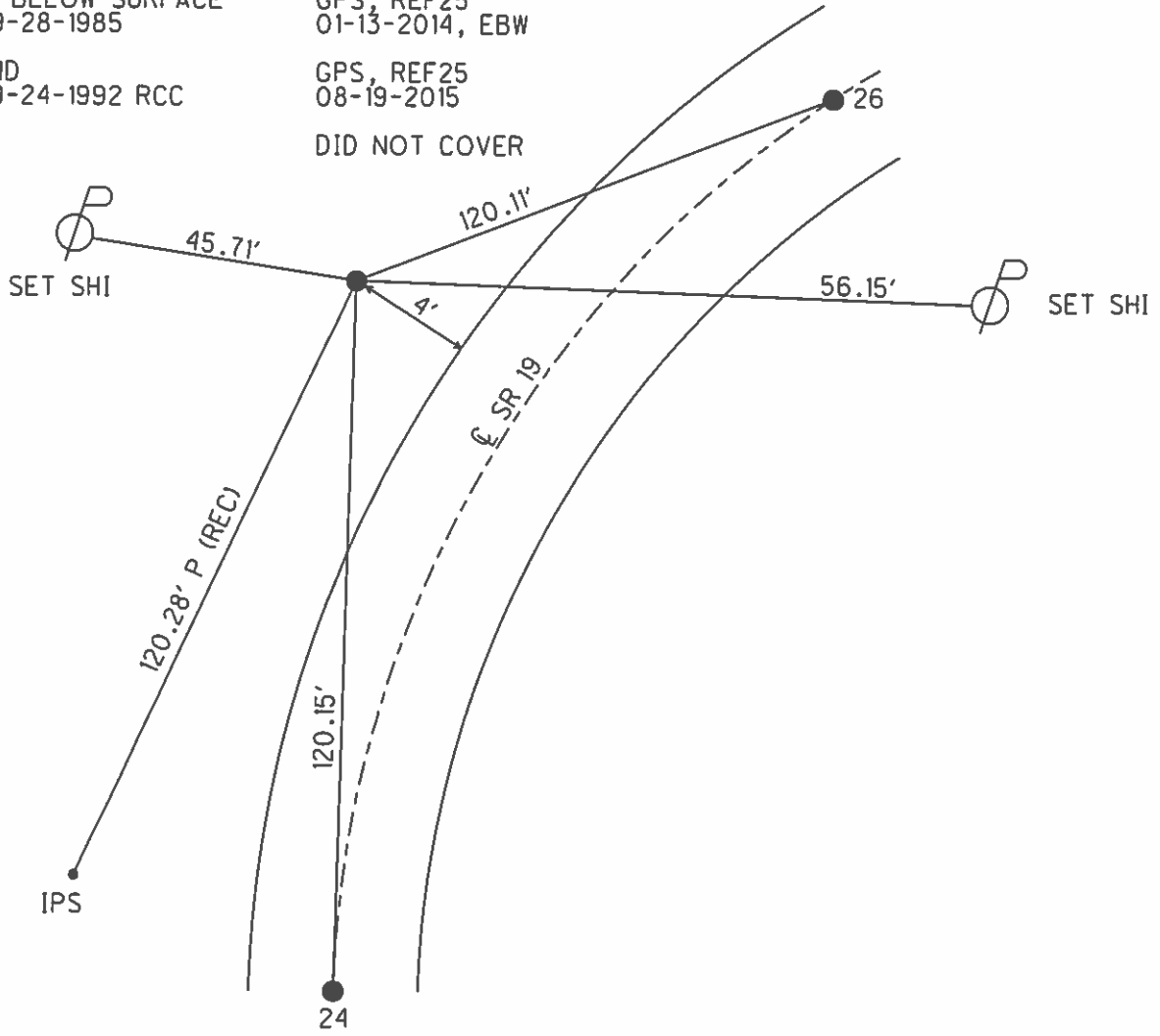
TYPE MONUMENT GALVINIZED BOLT
~~ON SURFACE~~ - BELOW 3"
 LEFT - ℄ PAV'T - ~~RIGHT~~ 15.2'
4.5' RT TO LT EDGE PAVEMENT
 S.L.M. 165+59.44



Grid: Northing: 500367.8929 Easting: 1826019.9878

RECORD PI STA. 166+03 NEED TO DIG
 GALVINIZED BOLT FND BOLT
 2" BELOW SURFACE GPS, REF25
 09-28-1985 01-13-2014, EBW

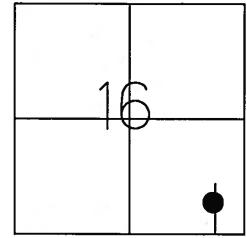
FND GPS, REF25
 09-24-1992 RCC 08-19-2015
 DID NOT COVER



O.D.O.T. DISTRICT 2 SURVEY OFFICE (USE ONLY)

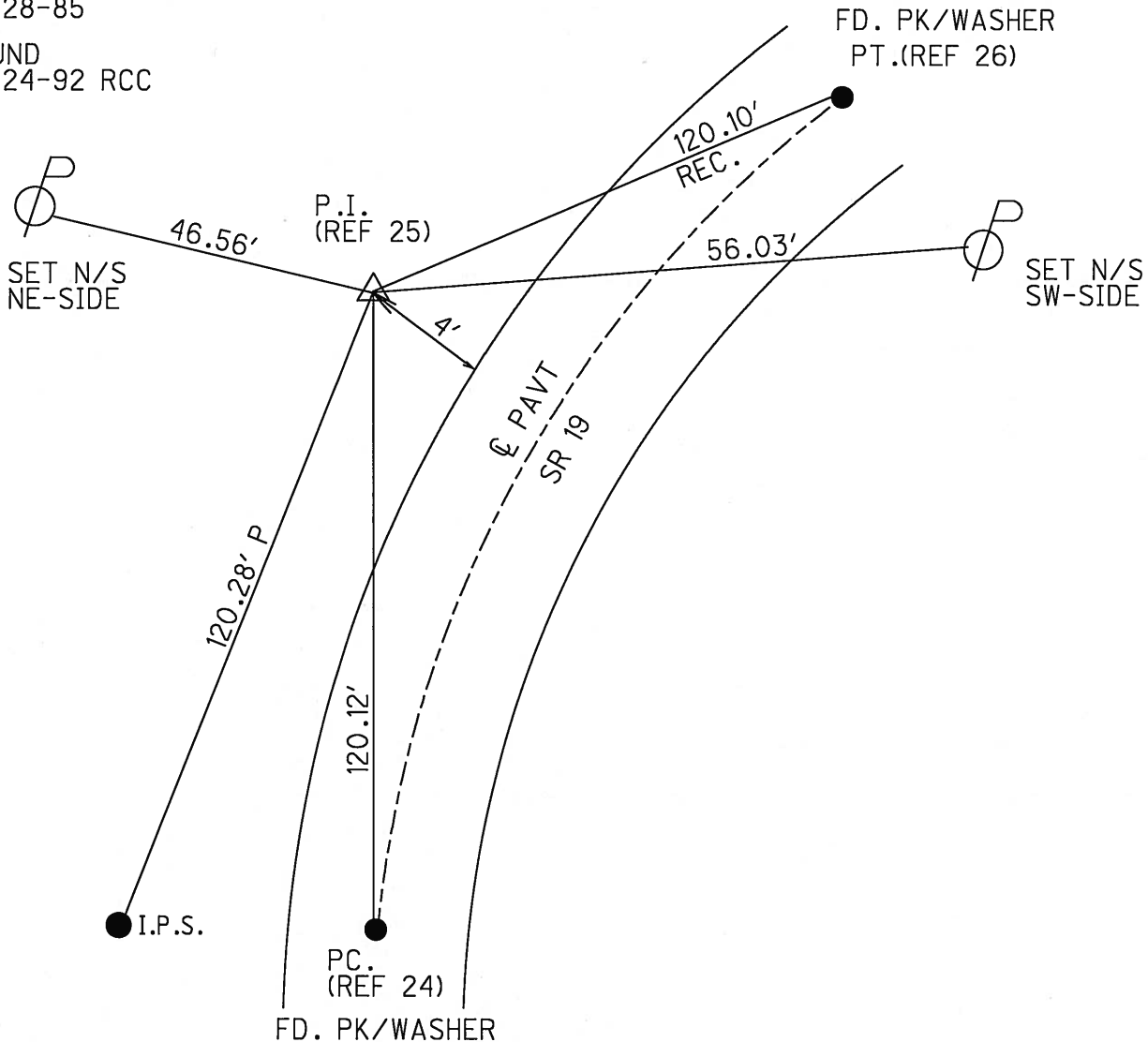
PERSONNEL	REFERENCE NO. <u>25</u>	SHEET <u>28</u> OF <u>62</u>
NOTES <u>CANTERBURY</u>	DATE <u>04-19-06</u>	ROUTE <u>SR 19</u>
H.C. <u>BARNHISEL</u>	WEATHER <u>FAIR</u>	COUNTY <u>SENECA</u>
R.C. <u>HOMAN</u>	TEMP. <u>+62°</u>	TOWNSHIP <u>BLOOM</u>
		SECTION <u>16</u>
		T <u>1</u> N R <u>16</u> E

TYPE MONUMENT FD. GALVINIZED BOLT
~~ON SURFACE~~ - BELOW 3" BELOW
 LEFT - C PAV'T - ~~RIGHT~~ 15.2' LT.
4.5' RT. TO LT. EDGE PAVEMENT
 S.L.M. 165+55 (SV28)
 Grid: Northing: _____ Easting: _____



RECORD
 P.I. STA. 166+03
 GALVINIZED BOLT
 2" BELOW SURFACE
 09-28-85

FOUND
 09-24-92 RCC



O.D.O.T. DISTRICT 2 SURVEY OFFICE

PERSONNEL

REFERENCE NO. 25

SHEET 26 OF 53

NOTES RIFFLE

H.C. BARBOUR

DATE 6-22-1992

ROUTE #19

R.C. GREYMAN

WEATHER CLOUDY

COUNTY SENECA

CHENEY

TEMP. 66°

TOWNSHIP BLOOM

SECTION 16

T.1 N R.16 E

TYPE MONUMENT GALVANIZED BOLT

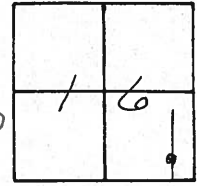
~~ON~~ SURFACE - BELOW 2"±

LEFT-☉ PAV'T. - RIGHT 14'±

4 1/2 FT. TO LT. EDGE PAVEMENT

S.L.M. 165+59

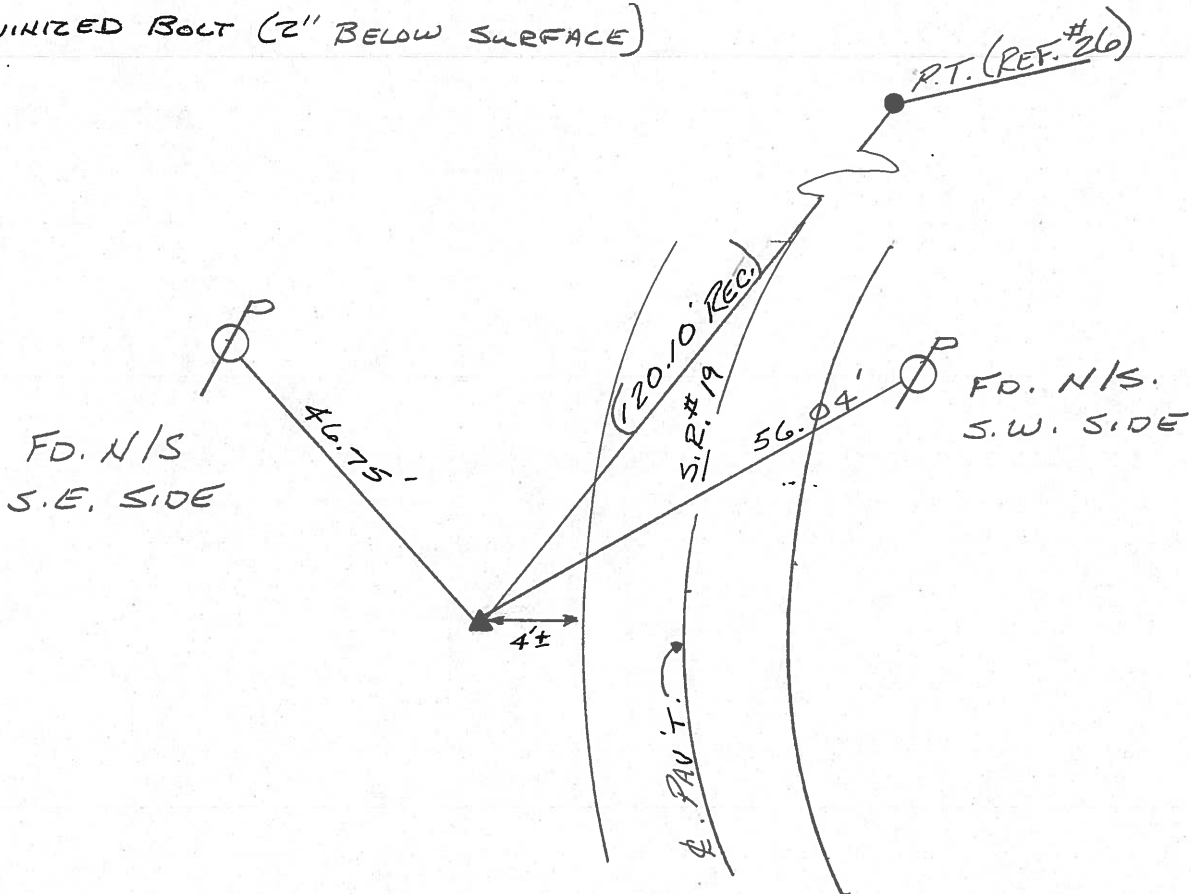
FD. 9-24-92
PCC



RECORD: 9-20-85

P.I. STA. 166+03±

GALVANIZED BOLT (2" BELOW SURFACE)



County Seneca S.R. #19

Date 9/20/85

Township Bloom

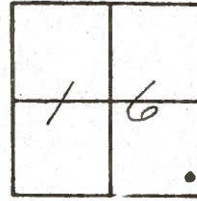
Weather SUNNY

Section 16

Temp. 75°

T 1N, R 16E

Personnel Cronin



Ripple

Geyman

Barbour

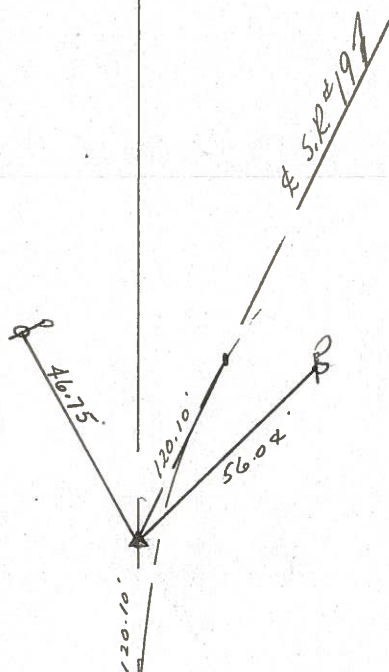
25

P.I. - Δ = 23° 28' Rt.

166+03 ± S.L.M.

GALVANIZED BOLT 2" BELOW

SURFACE 13.6' Lt. & PAUT



S.R. #197

County SENECA S.R. 19

Date 7/17/79

Township BLOOM

Weather sunny

Section 16

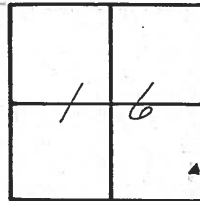
Temp. 65°

T/N, R/E

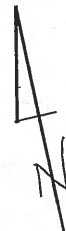
Personnel Cronin

Ripple

Geyman



25



A = 23° 28' Rt.

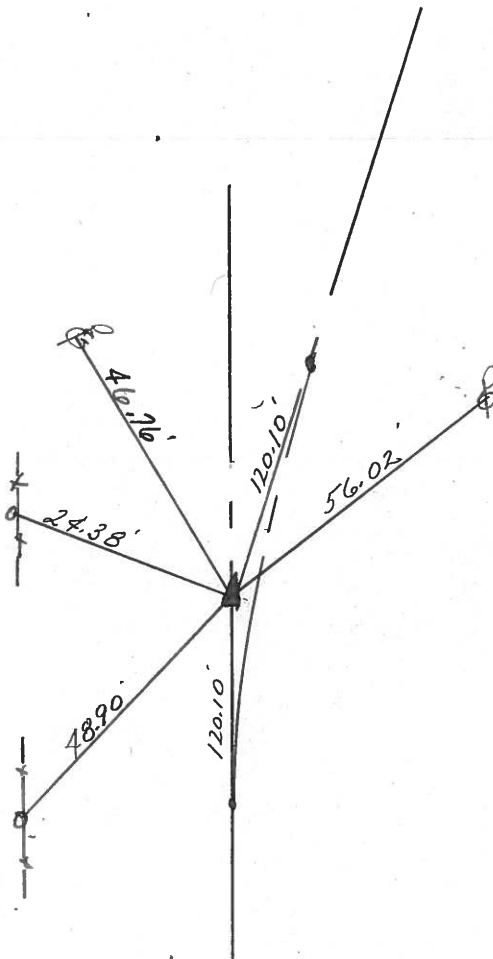
P.I.

166+60 ± S.L.M.

Fd. galvanized bolt

3.0' ± Lt. of Lt. Edge

of Pavement



S.L.# 19

PERSONNEL	TITLE	PERSONNEL	TITLE
Ash			
Cronin			
Ripple			
Anderson			

COUNTY Seneca DATE 3/20/72

S. R. # 19 WEATHER _____

SEC. _____ TEMP. _____

DESCRIPTION Ties for Control Points - Sen. Co. Line North to Bloomville JOB NO. _____

