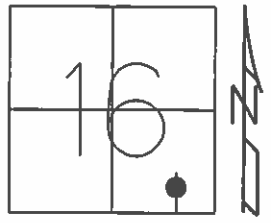


O.D.O.T. DISTRICT 2 SURVEY OFFICE (USE ONLY)

PERSONNEL \_\_\_\_\_ REFERENCE NO. 26 SHEET 29 OF 64  
 NOTES RHOADES DATE 08-19-2015 ROUTE SR 19  
 H.C. O'DONNELL WEATHER FAIR COUNTY SENECA  
 R.C. RHOADES TEMP. 72°F TOWNSHIP BLOOM  
 \_\_\_\_\_ SECTION 16  
 \_\_\_\_\_ T 1 N R 16 E

TYPE MONUMENT PK & WASHER  
 ON SURFACE - ~~BELOW~~ ON  
 LEFT - ☉ PAV'T - ~~RIGHT~~ 1.3'  
9.6' TO LT EDGE PAVEMENT  
 S.L.M. 166+79.51



Grid: Northing: 500459.3668 Easting: 1826097.9197

RECORD PT STA. 167+72  
 SET PK & WASHER ATOP  
 BOAT SPIKE ATOP  
 RR SPK. 10-28-1985

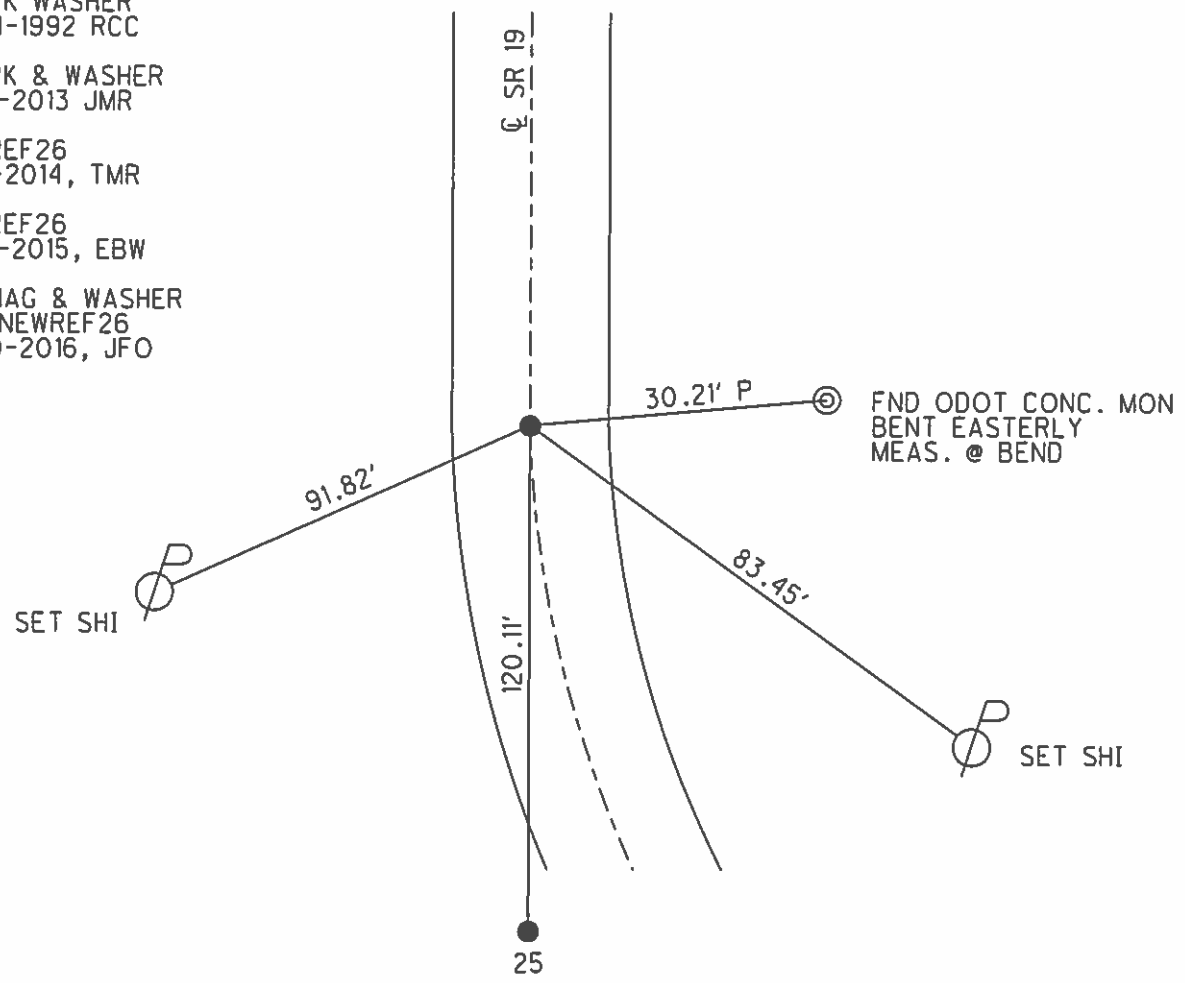
SET PK WASHER  
 09-24-1992 RCC

FND PK & WASHER  
 12-05-2013 JMR

GPS REF26  
 01-13-2014, TMR

GPS REF26  
 08-19-2015, EBW

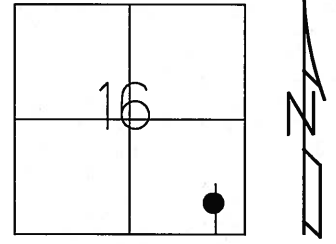
SET MAG & WASHER  
 GPS, NEWREF26  
 07-20-2016, JFO



O.D.O.T. DISTRICT 2 SURVEY OFFICE (USE ONLY)

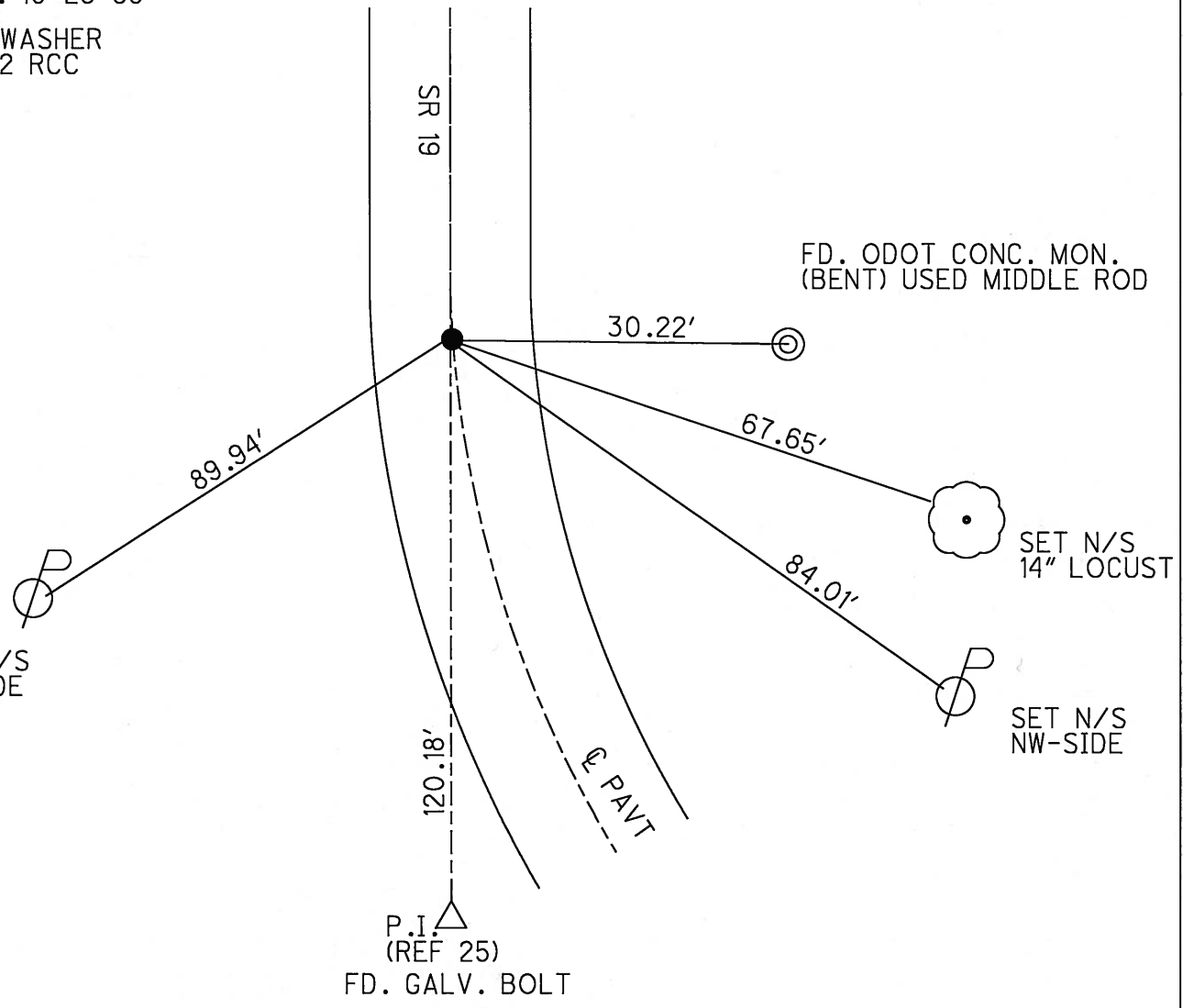
PERSONNEL	REFERENCE NO. <u>26</u>	SHEET <u>29</u> OF <u>62</u>
NOTES <u>CANTERBURY</u>	DATE <u>04-19-06</u>	ROUTE <u>SR 19</u>
H.C. <u>BARNHISEL</u>	WEATHER <u>FAIR</u>	COUNTY <u>SENECA</u>
R.C. <u>HOMAN</u>	TEMP. <u>+62°</u>	TOWNSHIP <u>BLOOM</u>
		SECTION <u>16</u>
		T <u>1</u> N R <u>16</u> E

TYPE MONUMENT FD. PK./WASHER  
 ON SURFACE - ~~BELOW~~ ON SURFACE  
 LEFT - C PAV'T - ~~RIGHT~~ 1.3' LT.  
9.6' TO LT. EDGE PAVEMENT  
 S.L.M. 166+71 (SV29)



Grid: Northing: \_\_\_\_\_ Easting: \_\_\_\_\_

RECORD  
 PT. STA. 167+72  
 SET PK./SHINER ATOP  
 BOAT SPIKE ATOP  
 RR. SPK. 10-28-85  
 SET PK/WASHER  
 09-24-92 RCC



# O.D.O.T. DISTRICT 2 SURVEY OFFICE

PERSONNEL

REFERENCE NO. 26

SHEET 27 OF 53

NOTES RIPPLE

H.C. BARRISOUR

DATE 6-22-1992

ROUTE #19

R.C. CHENEY

WEATHER CLOUDY

COUNTY SENECA

GEYMAN

TEMP. 66°

TOWNSHIP BLOOM

SECTION 16

T. 1 N. 16 E.

TYPE MONUMENT PK/WASHER

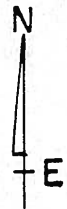
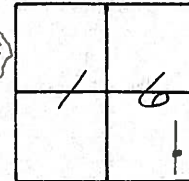
ON SURFACE - BELOW YES

LEFT-0 PAV'T. - RIGHT 1.5'

8.5' TO LT. EDGE PAVEMENT

S.L.M. 166+79

SET PK/WASHER  
 9-24-1992  
 FCC



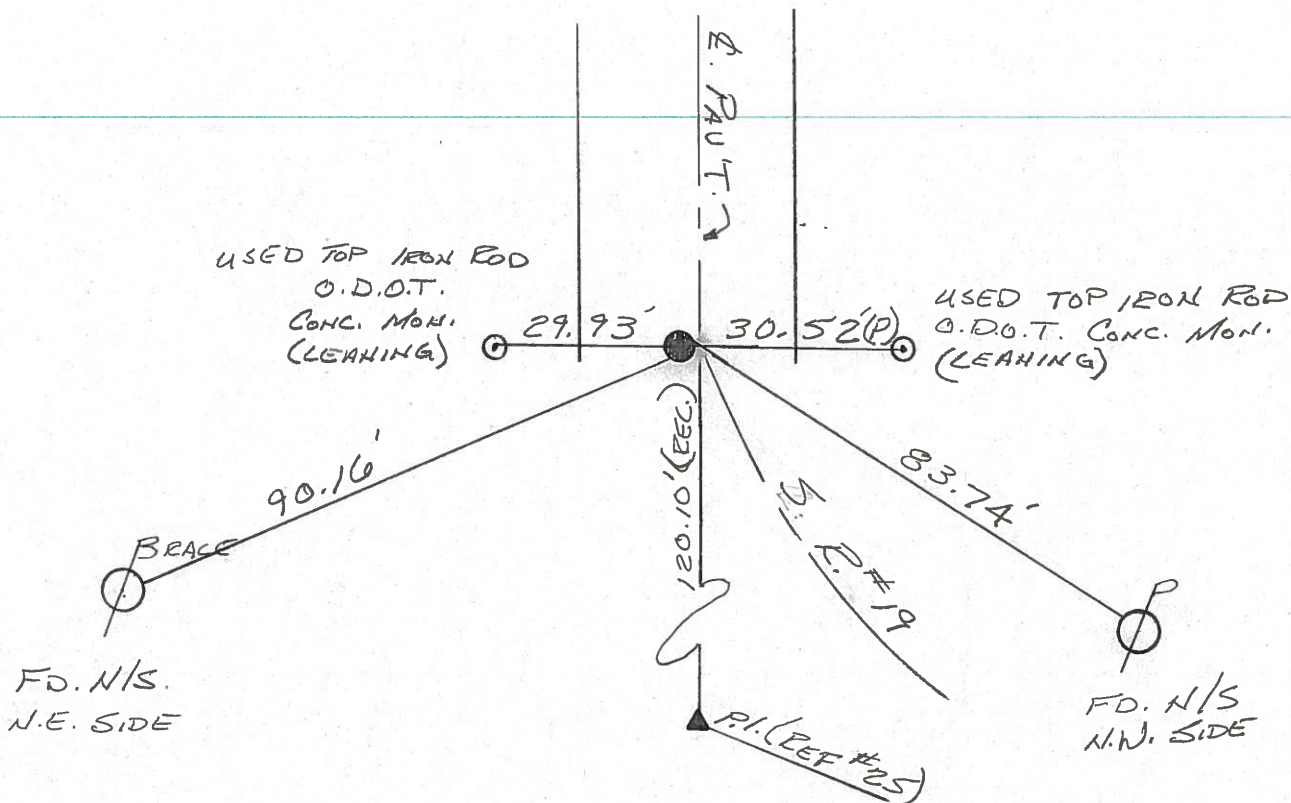
RECORDED: 10/28/85

P.T. STA. 167+72

SET PK/WASHER ATOP

BOAT SPK. ATOP

ER. SPK.



County Seneca S.R. #19

Date 10/28/85

Township Bloom

Weather SUNNY - WINDY

Section 16

Temp. 50°

T1N, R16E

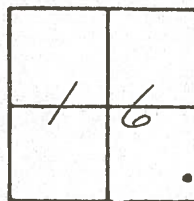
Personnel Cronin

Ripple

Geyman

Barbour

(26)



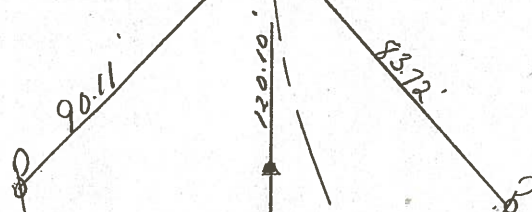
P.T.  
167+72 ± S.L.M.  
Set P.K. & WASHER ATOP boat  
spike atop R.L. spike 1.5 Lt  
& PAVEMENT

State Hi-way  
 conc. mon. (leaning)

29.93

30.52 - P

State Hi-way  
 conc. mon.  
 stem of brass plate  
 (leaning)



County SENECA S.R. 19

Date 7/17/79

Township BLOOM

Weather sunny

Section 16

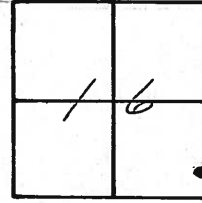
Temp. 69°

T/N, R/E

Personnel Cronin

Ripple

Geyman



26



P.T.

67+80 ± S.L.M.

1" bolt spike 1" below surface. R.L. spike below 5 1/4" below surface

State Highway  
Conc. Mon. 29.87

30.06  
Plumb

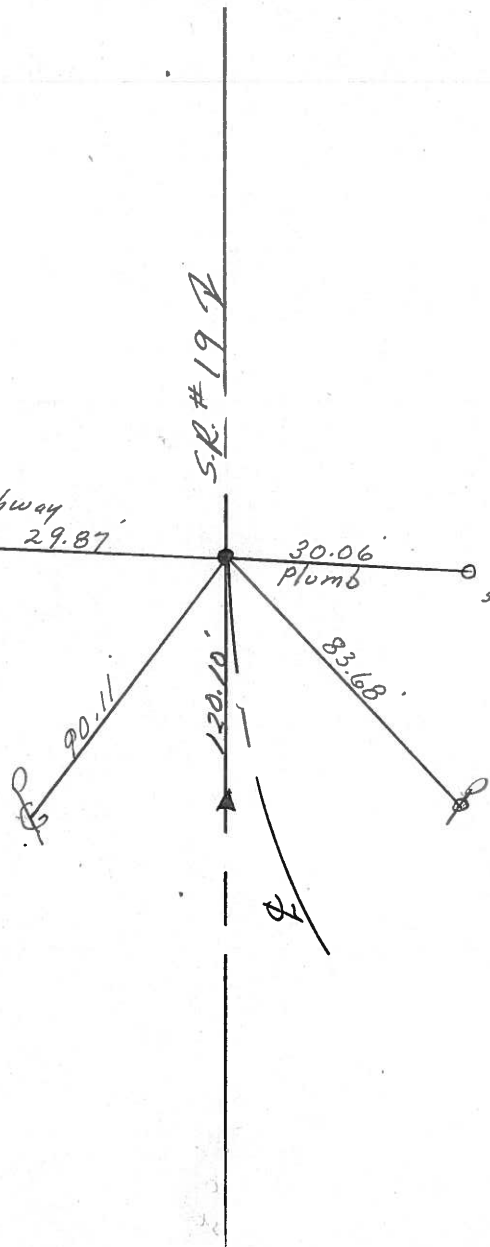
Conc. Mon.  
stem of brass plate

90.11

120.10

83.68

S.R. # 19



PERSONNEL TITLE PERSONNEL TITLE  
 Ash \_\_\_\_\_  
 Cronin \_\_\_\_\_  
 Ripple \_\_\_\_\_  
 Anderson \_\_\_\_\_

COUNTY Seneca DATE 3/20/72  
 S. R. # 19 WEATHER \_\_\_\_\_  
 SEC. \_\_\_\_\_ TEMP. \_\_\_\_\_

DESCRIPTION Ties for Control Points - Sen. Co. Line North to Bloornville JOB NO. \_\_\_\_\_

