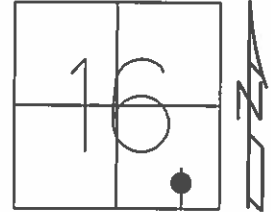


O.D.O.T. DISTRICT 2 SURVEY OFFICE (USE ONLY)

PERSONNEL \_\_\_\_\_ REFERENCE NO. 27 SHEET 30 OF 64  
 NOTES RHOADES DATE 08-19-2015 ROUTE SR 19  
 H.C. O'DONNELL WEATHER FAIR COUNTY SENECA  
 R.C. RHOADES TEMP. 65°F TOWNSHIP BLOOM  
 \_\_\_\_\_ SECTION 16  
 \_\_\_\_\_ T 1 N R 16 E

TYPE MONUMENT PK & WASHER  
 ON SURFACE - ~~BELOW~~ ON  
~~LEFT~~ - ☉ PAV'T - RIGHT 1.3'  
9.3' TO RT EDGE PAVEMENT  
 S.L.M. 167+85.82



Grid: Northing: 500540.3306 Easting: 1826166.6846

RECORD  
 PC. STA. 168+78  
 SET PK NAIL  
 3.5" BELOW SURFACE  
 10-28-85

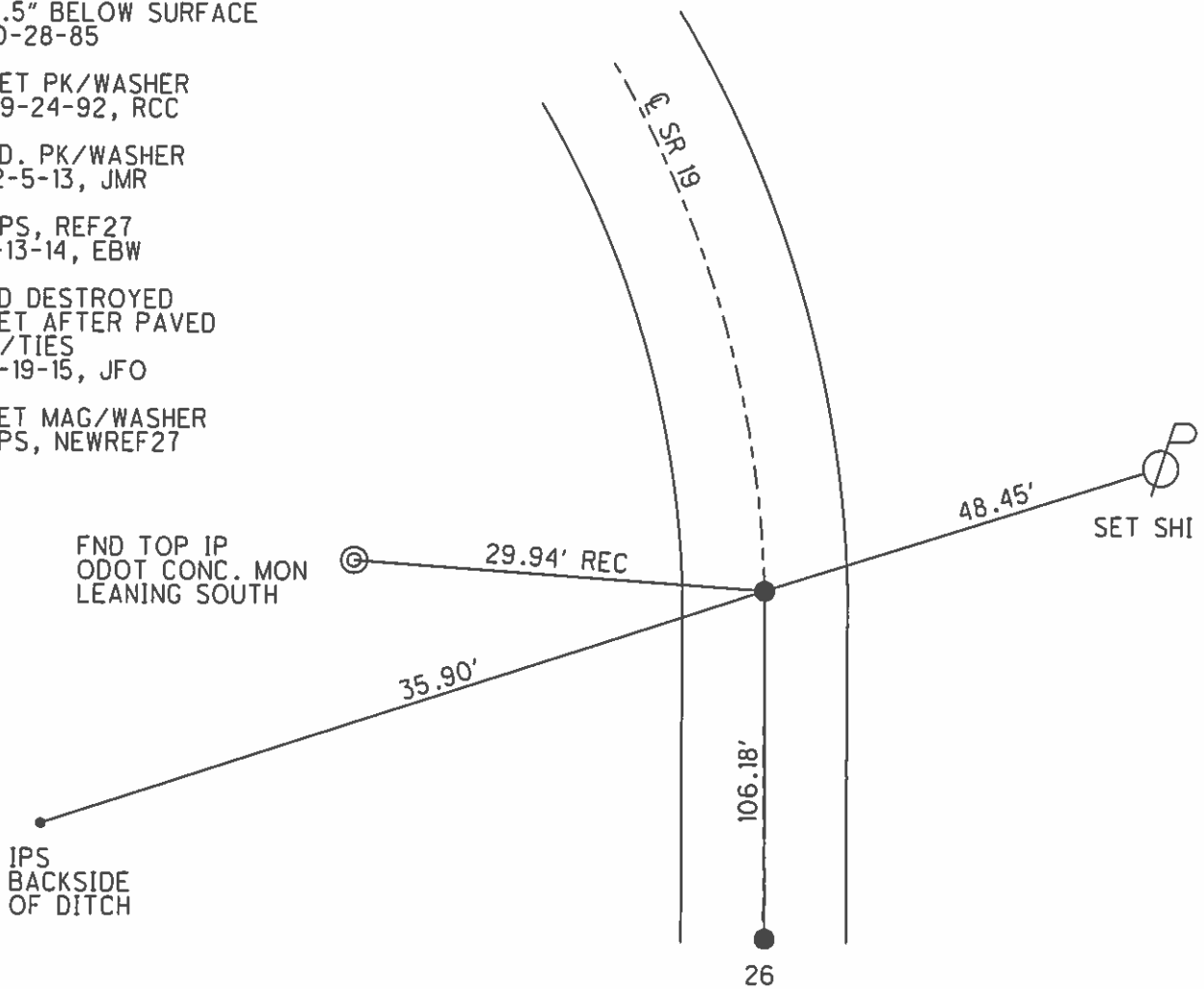
SET PK/WASHER  
 09-24-92, RCC

FD. PK/WASHER  
 12-5-13, JMR

GPS, REF27  
 1-13-14, EBW

FD DESTROYED  
 SET AFTER PAVED  
 W/TIES  
 8-19-15, JFO

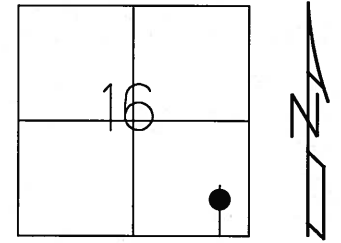
SET MAG/WASHER  
 GPS, NEWREF27



O.D.O.T. DISTRICT 2 SURVEY OFFICE (USE ONLY)

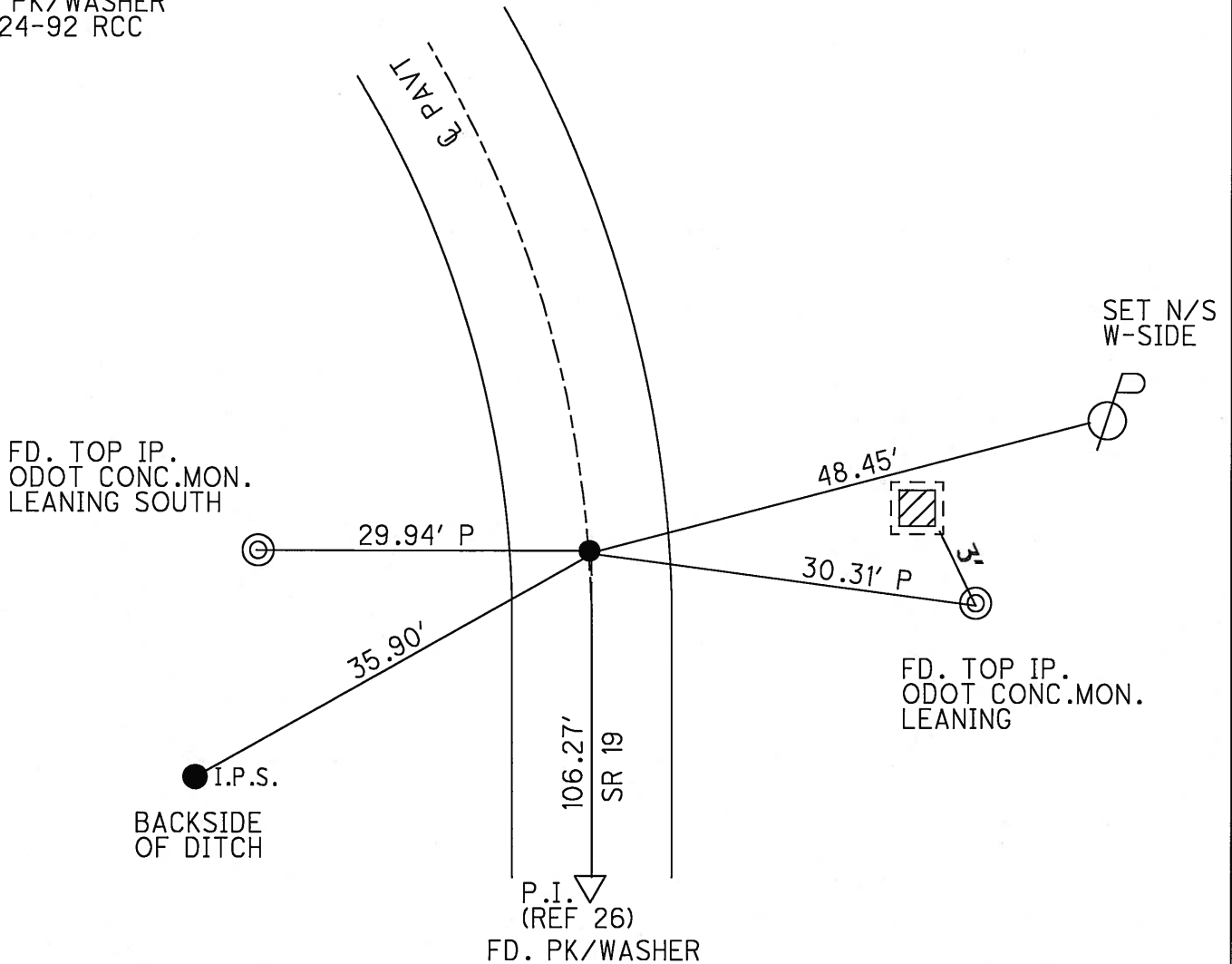
PERSONNEL	REFERENCE NO. <u>27</u>	SHEET <u>30</u> OF <u>62</u>
NOTES <u>CANTERBURY</u>	DATE <u>04-19-06</u>	ROUTE <u>SR 19</u>
H.C. <u>BARNHISEL</u>	WEATHER <u>FAIR</u>	COUNTY <u>SENECA</u>
R.C. <u>HOMAN</u>	TEMP. <u>+65°</u>	TOWNSHIP <u>BLOOM</u>
		SECTION <u>16</u>
		T <u>1</u> N R <u>16</u> E

TYPE MONUMENT FD. PK./WASHER  
 ON SURFACE - ~~BELOW~~ ON SURFACE  
~~LEFT~~ - C PAV'T - RIGHT 1.3' RT.  
9.3' TO RT. EDGE PAVEMENT  
 S.L.M. 167+77 (SV30)  
 Grid: Northing: \_\_\_\_\_ Easting: \_\_\_\_\_



RECORD  
 PC. STA. 168+78  
 SET PK NAIL  
 3.5" BELOW SURFACE  
 10-28-85

SET PK/WASHER  
 09-24-92 RCC



# O.D.O.T. DISTRICT 2 SURVEY OFFICE

PERSONNEL

REFERENCE NO. 27

SHEET 28 OF 53

NOTES RIPPLE

H.C. BAEBOUR

DATE 6-23-1992

ROUTE # 19

R.C. CHENEY

WEATHER CLOUDY

COUNTY SENECA

GEYMAN

TEMP. 52°

TOWNSHIP BLOOM

SECTION 16

T 1 N R 16 E

TYPE MONUMENT PK / NAIL / WASHER

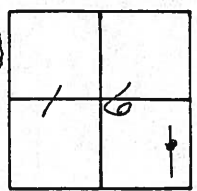
ON SURFACE - ~~BELOW~~ ON "

~~LEFT -~~ Q PAV'T. - RIGHT 1.5'

8.5' TO RT. EDGE PAVEMENT

S.L.M. 167+84

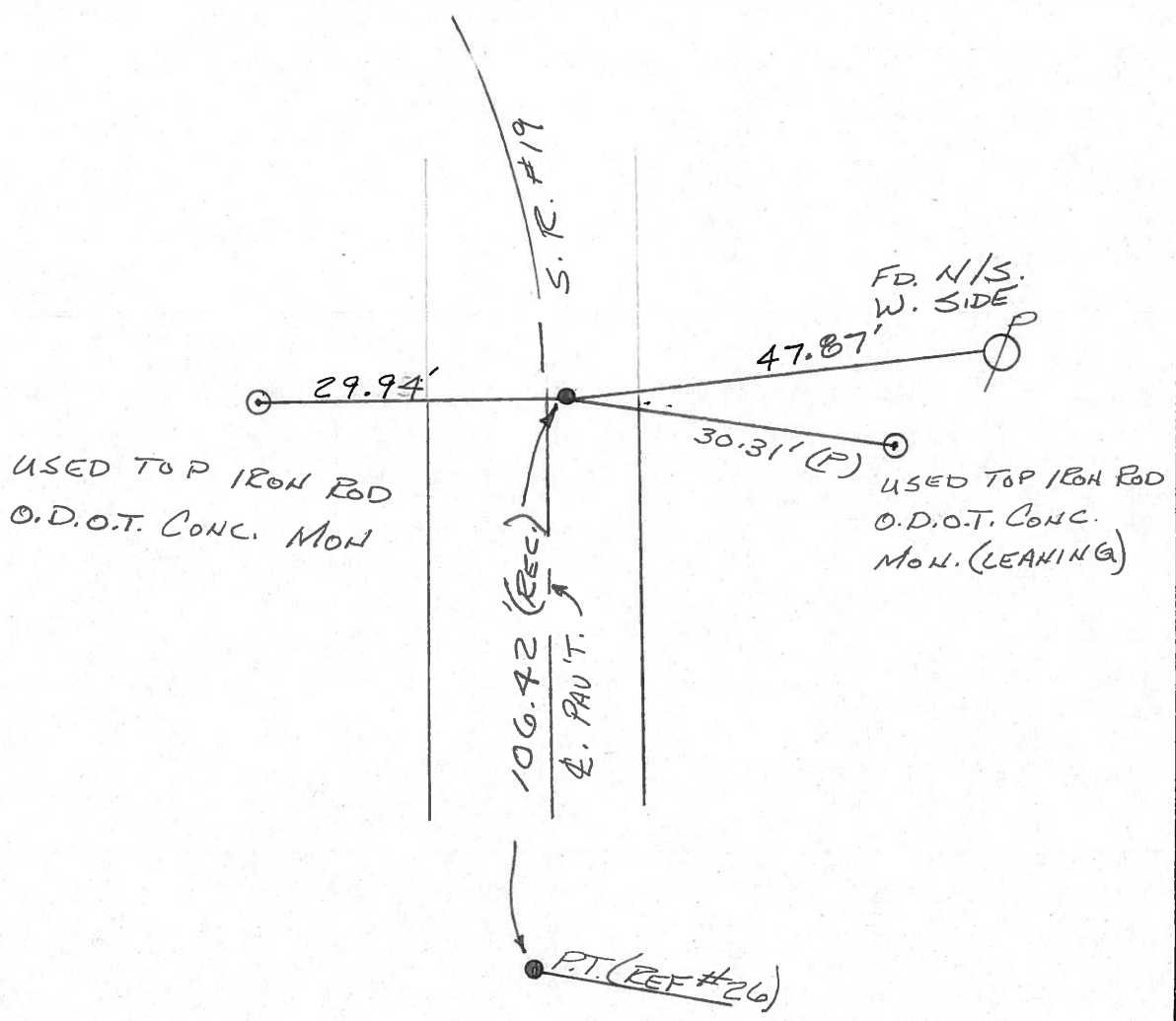
SET PK/WASHER  
9-24-92  
ECC



RECORD: 10/28/85

P.C. STA. 168+78±

P.K. NAIL 3 1/2" BELOW SURFACE



County Seneca S.R. #19

Date 10/28/85

Township Bloom

Weather sunny - windy

Section 16

Temp. 50°

T1N, R16E

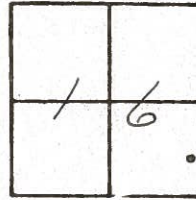
Personnel Cronin

Ripple

Geyman

Barbour

(27)



P.C.  
168+78± S.L.M.  
P.K 3 1/2" below surface. 1.5  
Rt. & Pavement

State Hi-way  
 Conc. mon  
 29.93'

47.84'  
 30-40'  
 Plumbed  
 State Hi-way  
 conc. mon.  
 (cleaning)

P.T.  
 106.12'  
 S.R. #19



County SENECA S.R. 19

Date 7/17/79

Township BLOOM

Weather sunny

Section 16

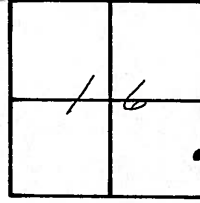
Temp. 69°

T 1 N, R 16 E

Personnel Cronin

Ripple

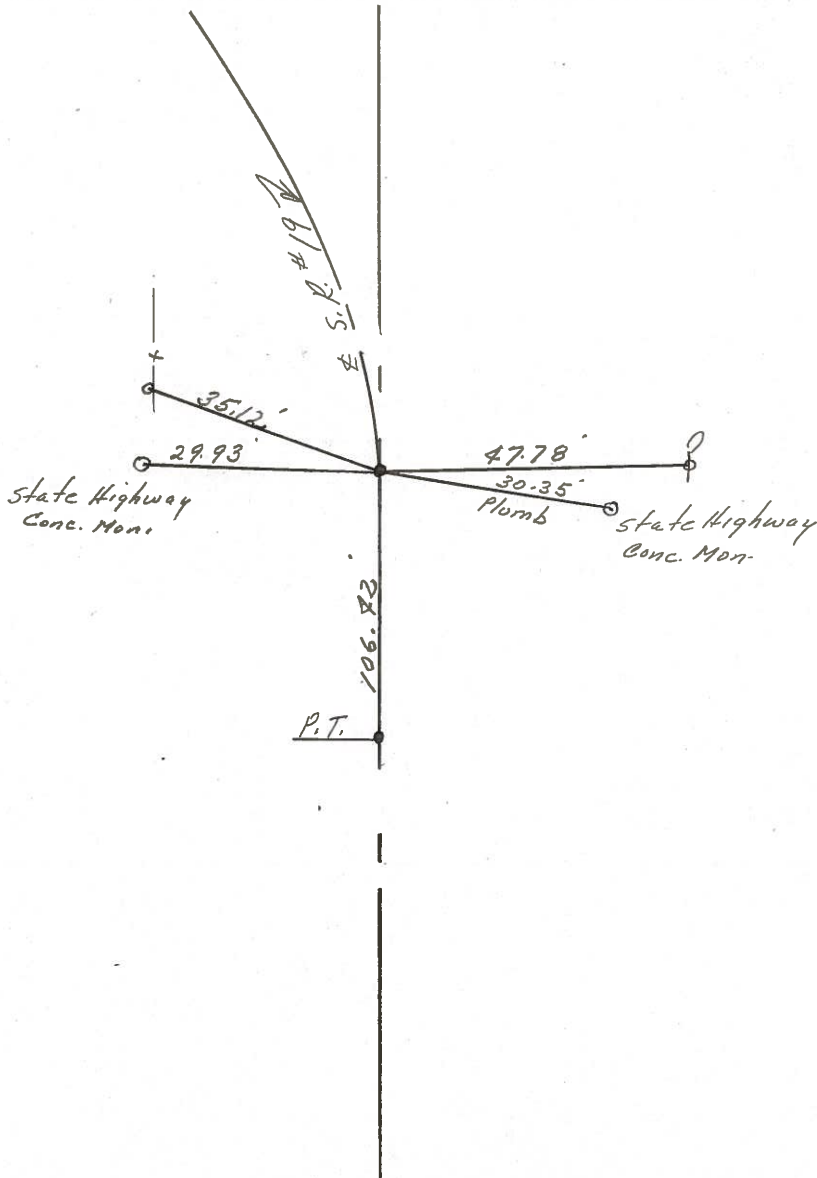
Geyman



27



P.C. 68+86 ± S.L.M.  
d. P.K. Nail 1" below  
surface



PERSONNEL TITLE PERSONNEL TITLE COUNTY Seneca DATE 7/27/72  
 Ash  
 Cronin  
 Ripple  
 Anderson  
 S. R. #19 WEATHER overcast  
 SEC. TEMP. 72°

DESCRIPTION Ties for Control Points - Sen. Co. Line North to Bloomville JOB NO.

