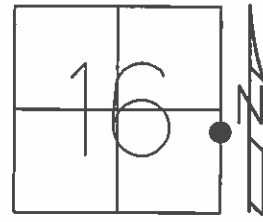


O.D.O.T. DISTRICT 2 SURVEY OFFICE (USE ONLY)

PERSONNEL _____ REFERENCE NO. 29 SHEET 32 OF 64
 NOTES RHOADES DATE 08-19-2015 ROUTE SR 19
 H.C. O'DONNELL WEATHER CLOUDY COUNTY SENECA
 R.C. RHOADES TEMP. 74°F TOWNSHIP BLOOM
 _____ SECTION 16
 _____ T 1 N R 16 E

TYPE MONUMENT PK NAIL
~~ON SURFACE~~ - BELOW 6"
~~LEFT - C PAV'T~~ - RIGHT 0.5'
10.5' TO RT. EDGE PAVEMENT
 S.L.M. 171+99.98



Grid: Northing: 500904.9101 Easting: 1826303.0859

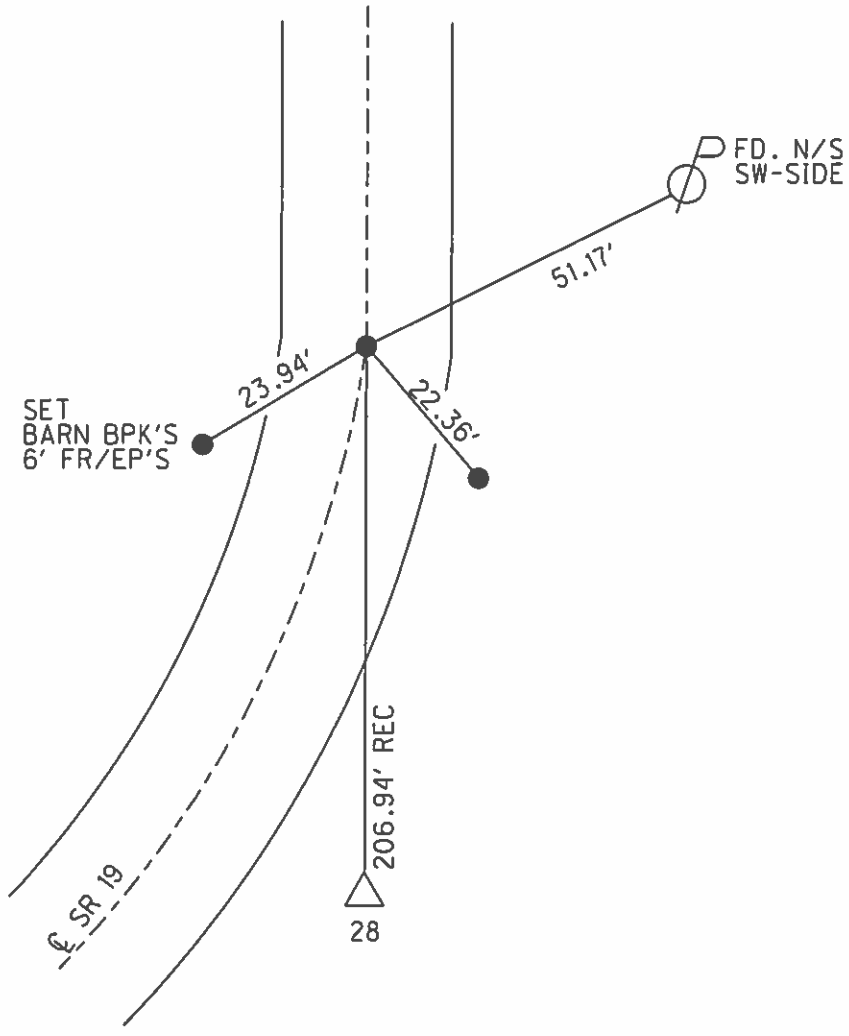
RECORD:
 PT. STA. 173+00
 PK./WASHER ATOP
 PK. NAIL 10-07-85

SET PK/WASHER
 09-24-92, RCC

FD HOZE, FD PK
 12-5-13, JMR
 GPS, REF29
 1-13-14

GPS, REF29
 8/19/15, JFO

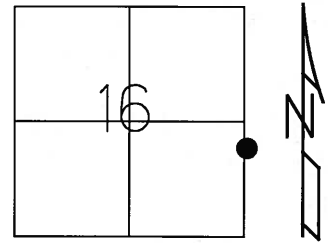
SET MAG/W
 GPS, NEWREF29
 7-20-16



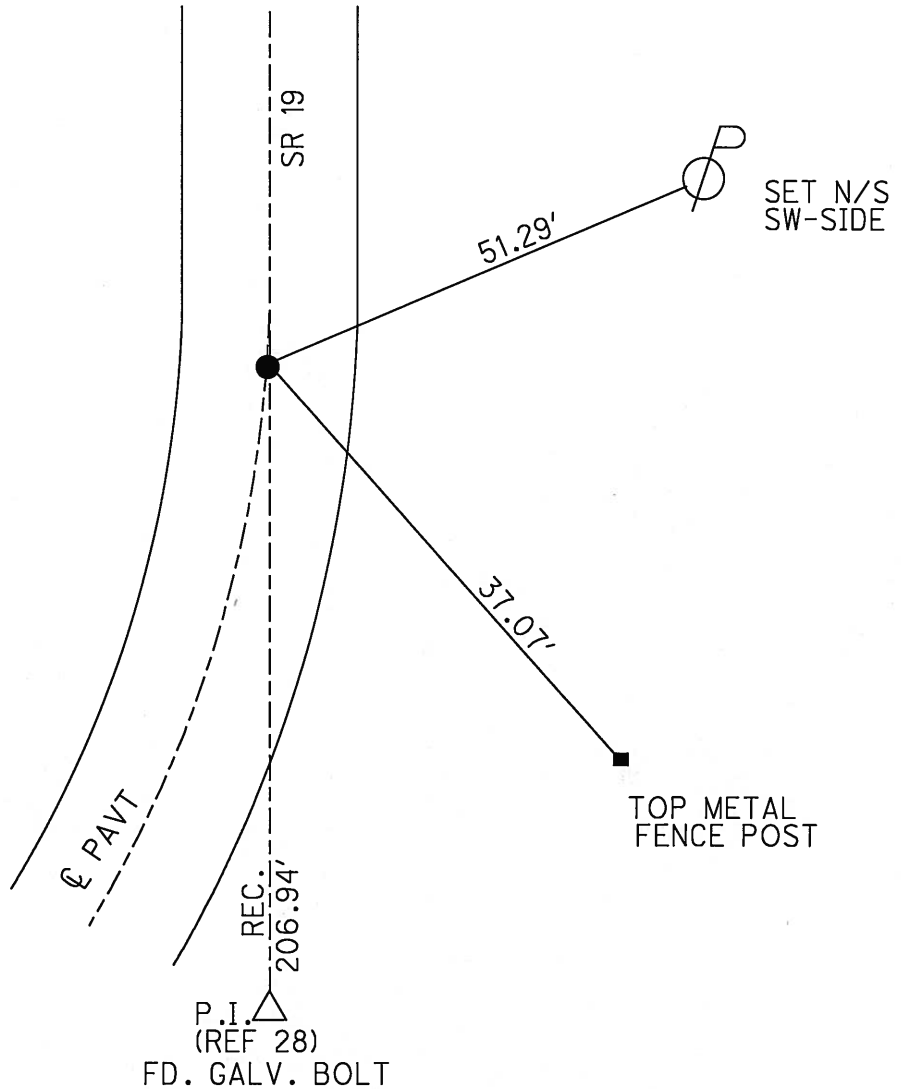
O.D.O.T. DISTRICT 2 SURVEY OFFICE (USE ONLY)

PERSONNEL _____ REFERENCE NO. 29 SHEET 32 OF 62
 NOTES CANTERBURY DATE 04-20-06 ROUTE SR 19
 H.C. MICKLOVICK WEATHER SUNNY COUNTY SENECA
 R.C. HANKE TEMP. +62° TOWNSHIP BLOOM
 _____ SECTION 16
 _____ T 1 N R 16 E

TYPE MONUMENT FD. PK./WASHER
 ON SURFACE - ~~BELOW~~ ON SURFACE
~~LEFT~~ - C PAV'T - ~~RIGHT~~ ON CL.
10.5' TO RT. EDGE PAVEMENT
 S.L.M. 171+73 (SV32)
 Grid: Northing: _____ Easting: _____



RECORD
 PT. STA. 173+00
 PK./WASHER ATOP
 PK. NAIL 10-07-85
 SET PK/WASHER
 09-24-92 RCC



O.D.O.T. DISTRICT 2 SURVEY OFFICE

PERSONNEL

REFERENCE NO. 29

SHEET 30 OF 53

NOTES RIPPLE

H.C. BARBOUR

DATE 6-22-1992

ROUTE # 19

R.C. GEYMAN

WEATHER SUNNY

COUNTY SENECA

CHENEY

TEMP. 70°

TOWNSHIP BLOOM

SECTION 15 & 16 (?)

T 1 N 16 E

TYPE MONUMENT PK/WASHER

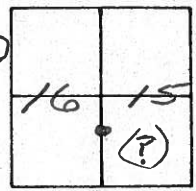
ON SURFACE - ~~BELOW~~ YES

~~LEFT - C. PAV'T. - RIGHT~~ ON

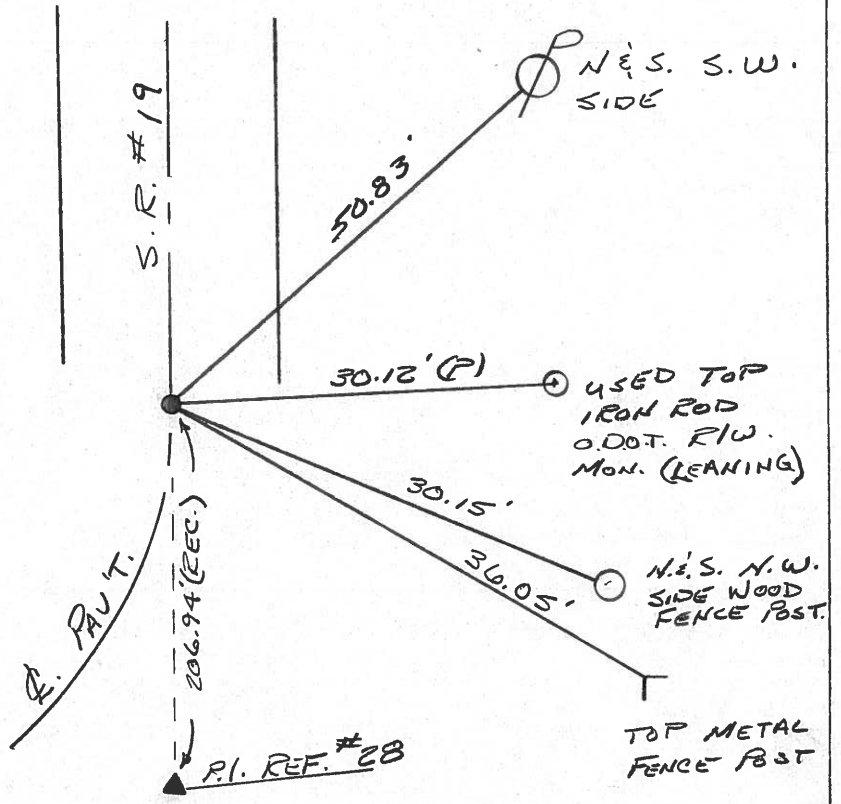
10' TO RT. EDGE PAVEMENT

S.L.M. 171 + 79

SET PK/WASHER
9-24-1992
F.C.C.



RECORD: 10/7/85
P.T. STA. 173400±
PK/WASHER ATOP P.K.



O.D.O.T. DISTRICT 2 SURVEY OFFICE

PERSONNEL

REFERENCE NO. 29

SHEET 30 OF

NOTES CRONIN - VAC.

DRAWN 10/22/85

ROUTE #19

H.O. RIPPLE

DATE 10/17/85

COUNTY SENECA

R.C. BARBOUR

WEATHER CLOUDY

TOWNSHIP Bloom

GEYMAN

TEMP. 55°

SECTION 15? 16?

T 1 N R 16 E

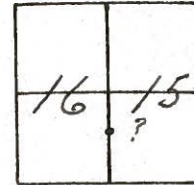
TYPE MONUMENT PK WASHER TOP PK NAIL

ON SURFACE - BELOW ON SURFACE

LEFT - & PAV'T. - RIGHT & PAV'T.

TO EDGE PAVEMENT

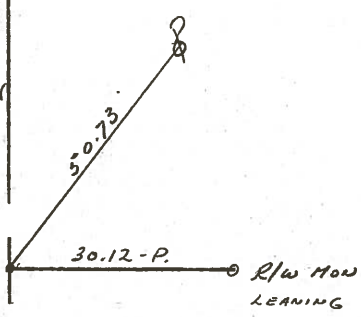
S.L.M. 173+00 ±



P.T.

S.S. #19

206.98



County SENECA S.R. 19

Date 7/18/79

Township BLOOM

Weather sunny

Section Either 15 or 16 15

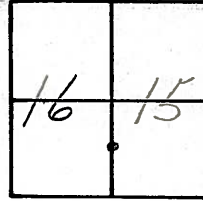
Temp. 72°

T/N, R/E

Personnel Cronin

Ripple

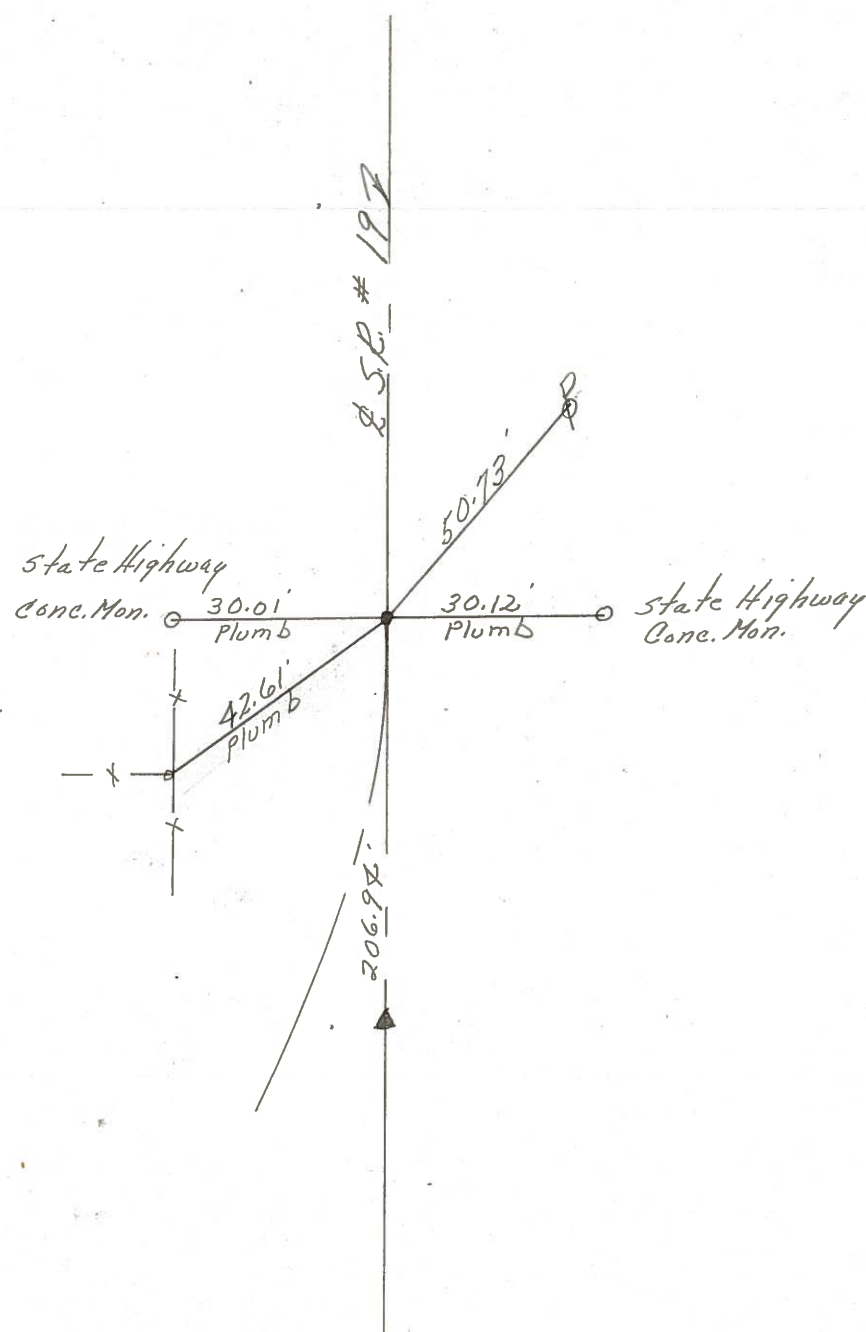
Geyman



29



P.T.
 173400 ± S.L.M.
 Ed. P.K. nail 1" below
 surface. Point was set
 from monument to the west.



PERSONNEL TITLE PERSONNEL TITLE

Ash
Cronin
Ripple
Anderson

COUNTY Seneca DATE 3/20/72

S. R. #19 WEATHER sunny

SEC. TEMP. 50°

DESCRIPTION Ties for Control Points - Sen. Co. Line North to Bloomville JOB NO.

