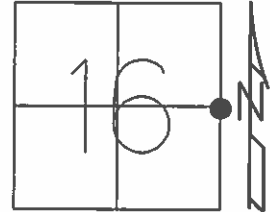


O.D.O.T. DISTRICT 2 SURVEY OFFICE (USE ONLY)

PERSONNEL \_\_\_\_\_ REFERENCE NO. 31 SHEET 34 OF 64  
 NOTES RHOADES DATE 08-19-2015 ROUTE SR 19  
 H.C. O'DONNELL WEATHER CLOUDY COUNTY SENECA  
 R.C. RHOADES TEMP. 72°F TOWNSHIP BLOOM  
 \_\_\_\_\_ SECTION 16  
 \_\_\_\_\_ T 1 N R 16 E

TYPE MONUMENT PK. SHANK  
 ON SURFACE - ~~BELOW~~ ON \_\_\_\_\_  
~~LEFT~~ - Q PAV'T - RIGHT 1.8' RT. /ON CL. EAST  
11.6' TO LT EDGE PAVEMENT  
 S.L.M. 188+12.69  
 Grid: Northing: 502517.2018 Easting: 1826337.2488



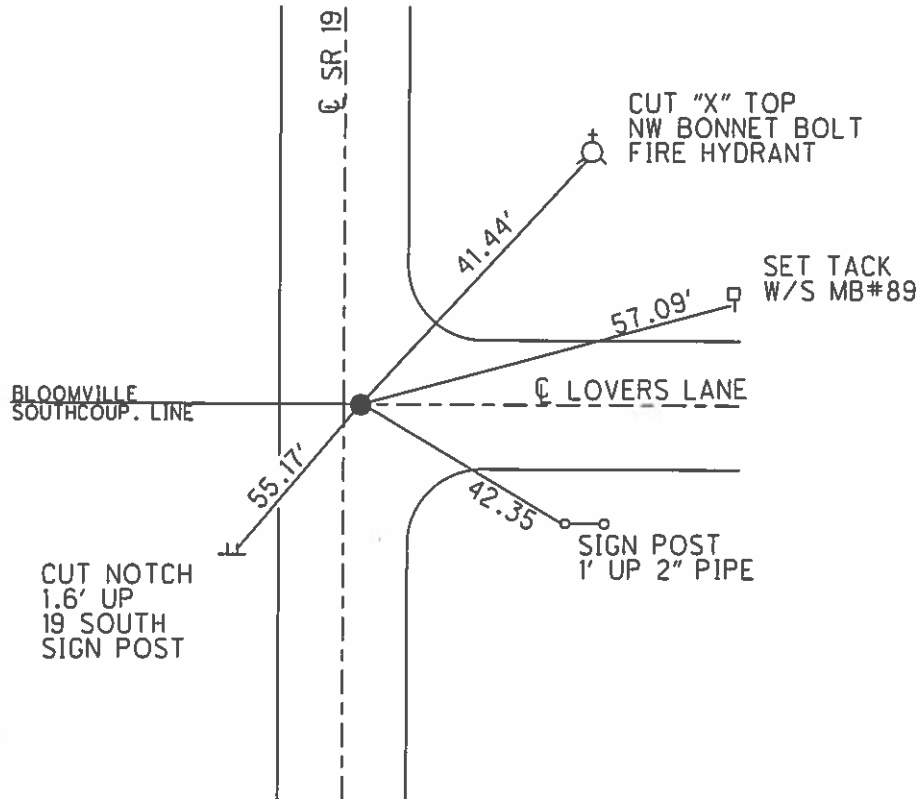
RECORD PL. 00°57' 00"  
 STA 187+96.80  
 R.R.SP.K.  
 3" BELOW SURFACE  
 10/07/85

SET PK/WASHER  
 09/24/92

FD PK/W  
 12/5/13.JMR  
 GPS, REF31  
 1/13/14

GPS, REF31  
 8/19/15

SET MAG/W  
 GPS, NEWREF31  
 7/20/16



O.D.O.T. DISTRICT 2 SURVEY OFFICE (USE ONLY)

PERSONNEL \_\_\_\_\_

REFERENCE NO. 31

SHEET 34 OF 62

NOTES CANTERBURY

DATE 04-20-06

ROUTE SR 19

H.C. MICKLOVICK

WEATHER SUNNY

COUNTY SENECA

R.C. HANKE

TEMP. +62°

TOWNSHIP BLOOM

SECTION 16

T 1 N R 16 E

TYPE MONUMENT FD. PK./WASHER

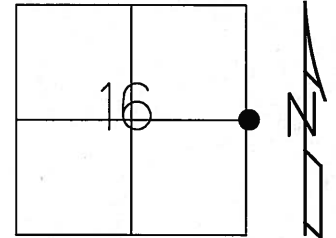
ON SURFACE - ~~BELOW~~ ON SURFACE

~~LEFT~~ - C PAV'T - RIGHT 1.8' RT. /ON CL. EAST

11.6' TO LT. EDGE PAVEMENT

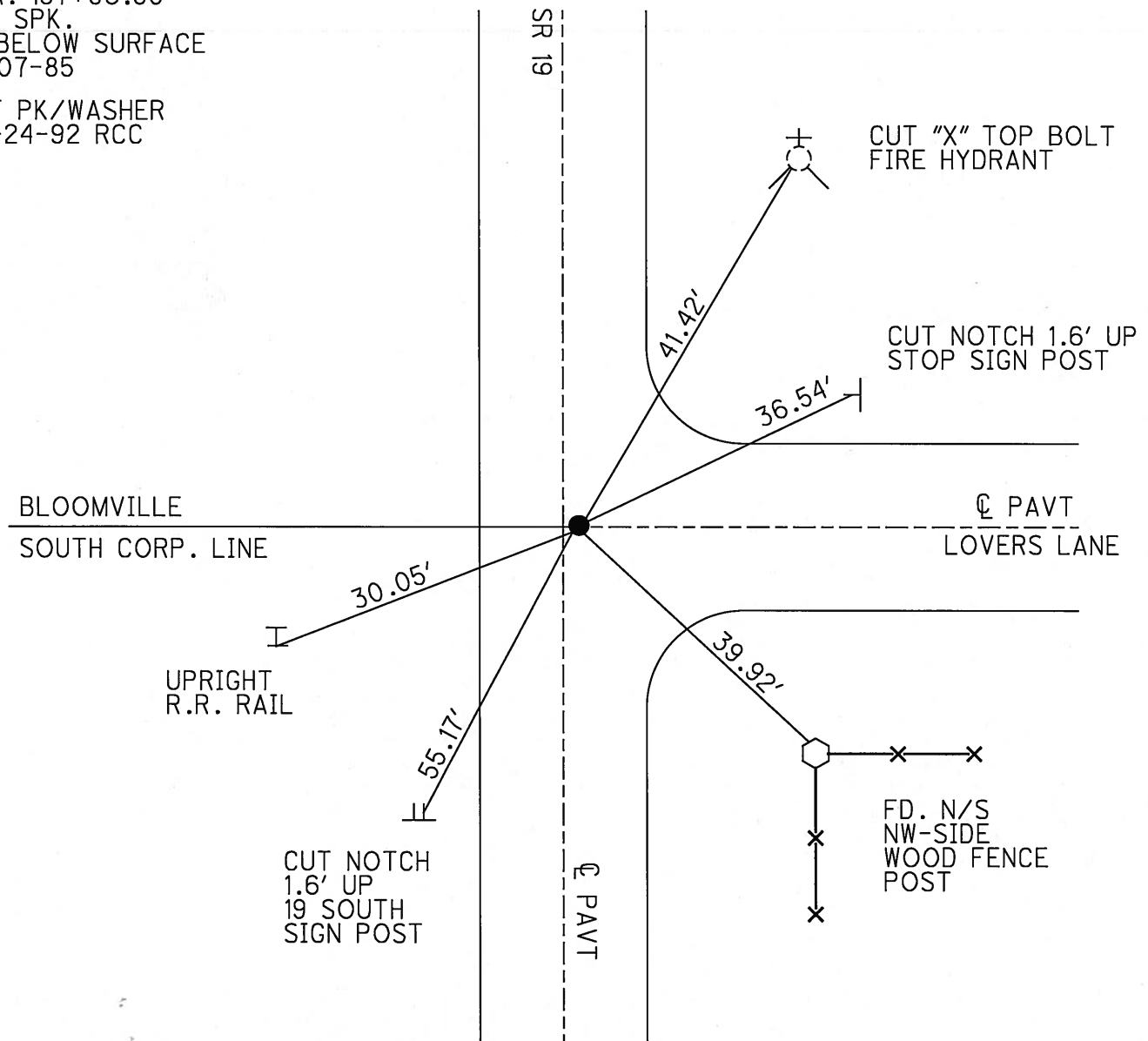
S.L.M. 187+83 (SV34)

Grid: Northing: \_\_\_\_\_ Easting: \_\_\_\_\_



RECORD PI. 00°57'00" LT.  
 STA. 187+96.80  
 RR. SPK.  
 3" BELOW SURFACE  
 10-07-85

SET PK/WASHER  
 09-24-92 RCC



CUT "X" TOP BOLT  
 FIRE HYDRANT

CUT NOTCH 1.6' UP  
 STOP SIGN POST

BLOOMVILLE  
 SOUTH CORP. LINE

CL PAVT  
 LOVERS LANE

UPRIGHT  
 R.R. RAIL

CUT NOTCH  
 1.6' UP  
 19 SOUTH  
 SIGN POST

FD. N/S  
 NW-SIDE  
 WOOD FENCE  
 POST

O.D.O.T. DISTRICT 2 SURVEY OFFICE

PERSONNEL

REFERENCE NO. 31

SHEET 32 OF 53

NOTES PIPPLE

H.C. BARBOUR

DATE 6-22-92

ROUTE #19

R.C. GEYMAN

WEATHER SUNNY

COUNTY SENECA

CHENEY

TEMP. 70°

TOWNSHIP Bloom

SECTION 15 & 16

T1 N/R 16 E

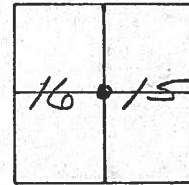
TYPE MONUMENT PK/WASHER

ON SURFACE - ~~BELOW~~ ON ~~LOW~~

~~LEFT~~ - Q PAV'T. - RIGHT 1.5' RT.

8.5' TO RT. EDGE PAVEMENT

S.L.M. 187+90



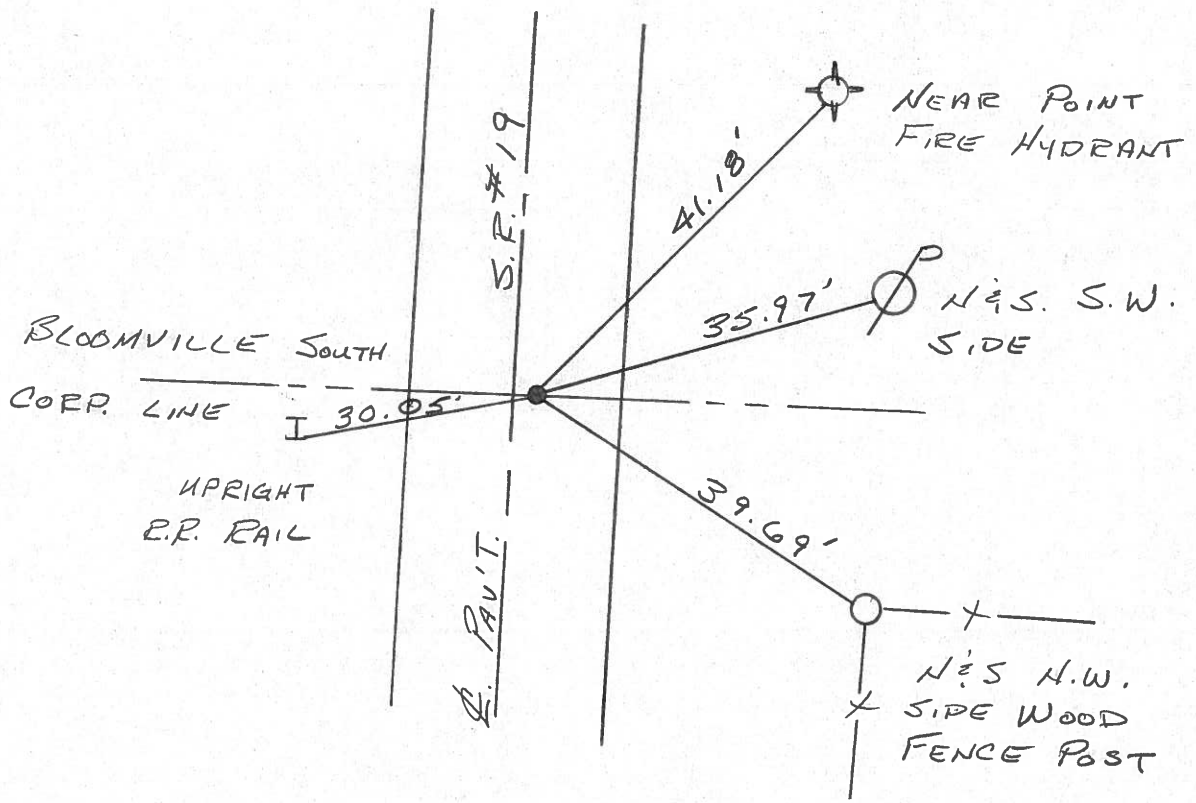
RECORD: 10/7/85

P.I. STA. 187+96.80

$\Delta = 00^{\circ} 57' 00''$  LT.

R.R. SPR. 3" BELOW

SET P.K/WASHER  
9-24-1992  
R.C.C.



# O.D.O.T. DISTRICT 2 SURVEY OFFICE

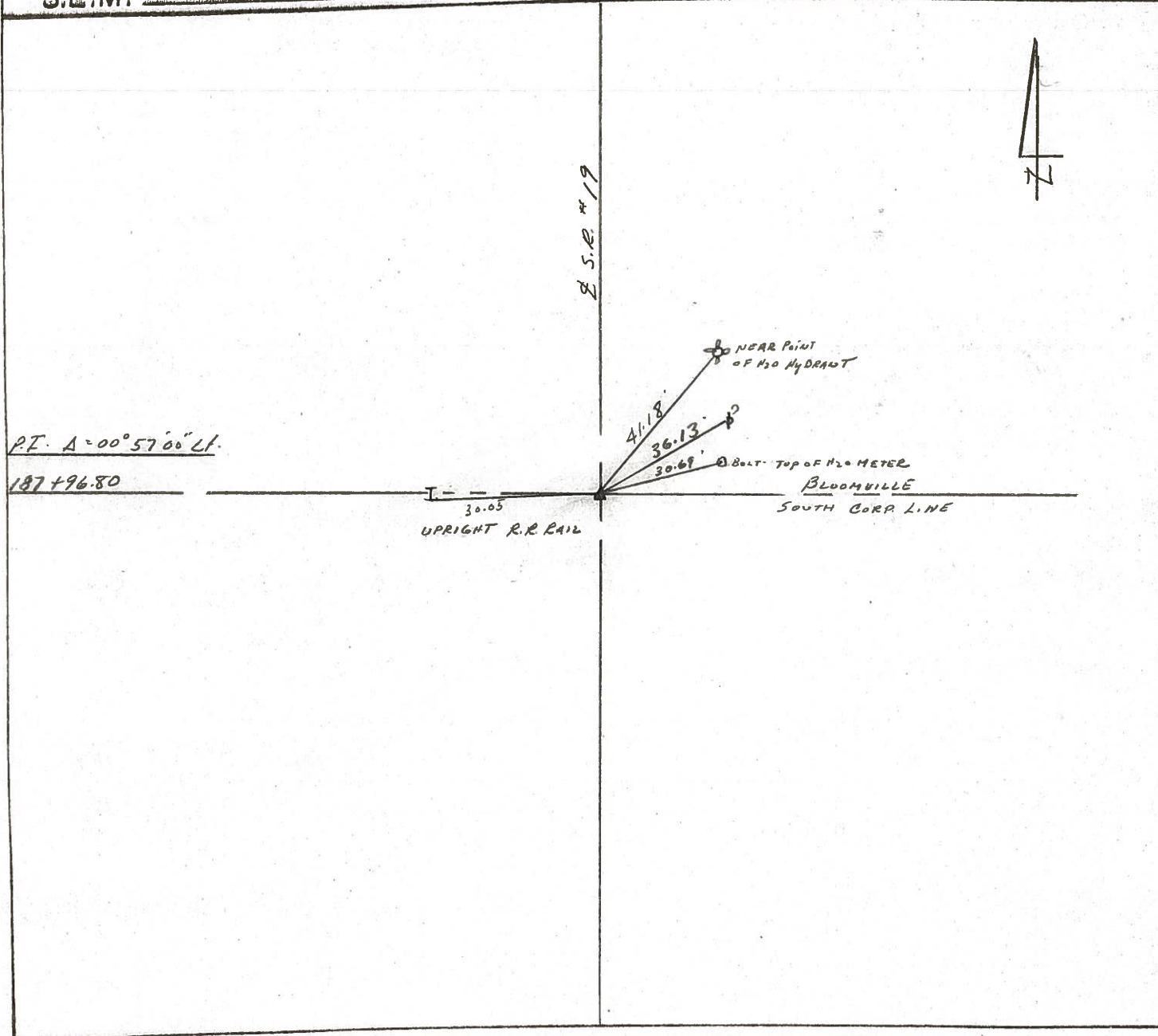
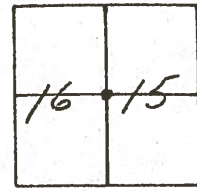
PERSONNEL

NOTES CRONIN - vac  
 H.C. RIFFLE  
 R.C. BARBOUR  
GEYMAN

REFERENCE NO. 31  
 DRAWN 10/22/85  
 DATE 10/17/85  
 WEATHER \_\_\_\_\_  
 TEMP. \_\_\_\_\_

SHEET 32 OF \_\_\_\_\_  
 ROUTE #19  
 COUNTY SENECA  
 TOWNSHIP BLOOM  
 SECTION 15E16  
T 1 N R 16 E

TYPE MONUMENT R.R. SPIKE  
 ON SURFACE - BELOW 3" BELOW  
 LEFT - & PAV'T. - RIGHT 1.8' RT. & PAVT.  
 TO EDGE PAVEMENT  
 S.L.M. 187+96.80



P.T.  $A = 00^{\circ} 57' 00''$  LT.  
187+96.80

30.05  
 UPRIGHT R.R. RAIL

41.18' NEAR POINT OF H<sub>2</sub>O HYDRANT  
 36.13' BOLT TOP OF H<sub>2</sub>O METER  
 30.69' BOLT TOP OF H<sub>2</sub>O METER  
 BLOOMVILLE SOUTH CORP LINE

County SENECA S.R. 19

Date 7/18/79

Township BLOOM

Weather cloudy

Section Either 15 or 16

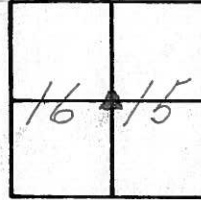
Temp. 65°

T1N, R16E

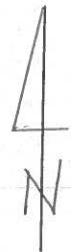
Personnel Cronin

Ripple

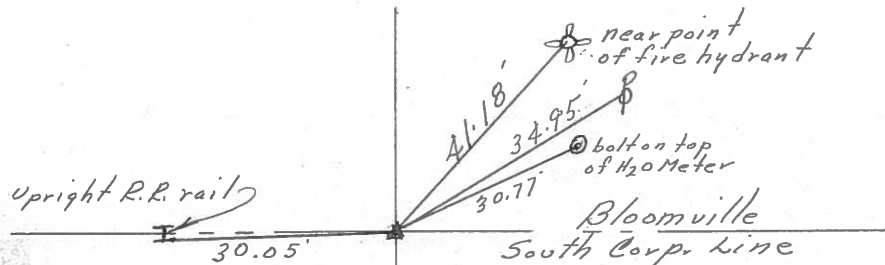
Geyman



31



P.I. - A = 00° 57' Lt.  
'87 + 96.80 S.L.M.  
Ed. R.R. spike on surface.



R.S.R. # 197

PERSONNEL	TITLE	PERSONNEL	TITLE
Ash			
Cronin			
Ripple			
Anderson			

COUNTY Seneca

drawn 3/6/72

DATE 2/2/72

S. R. #19

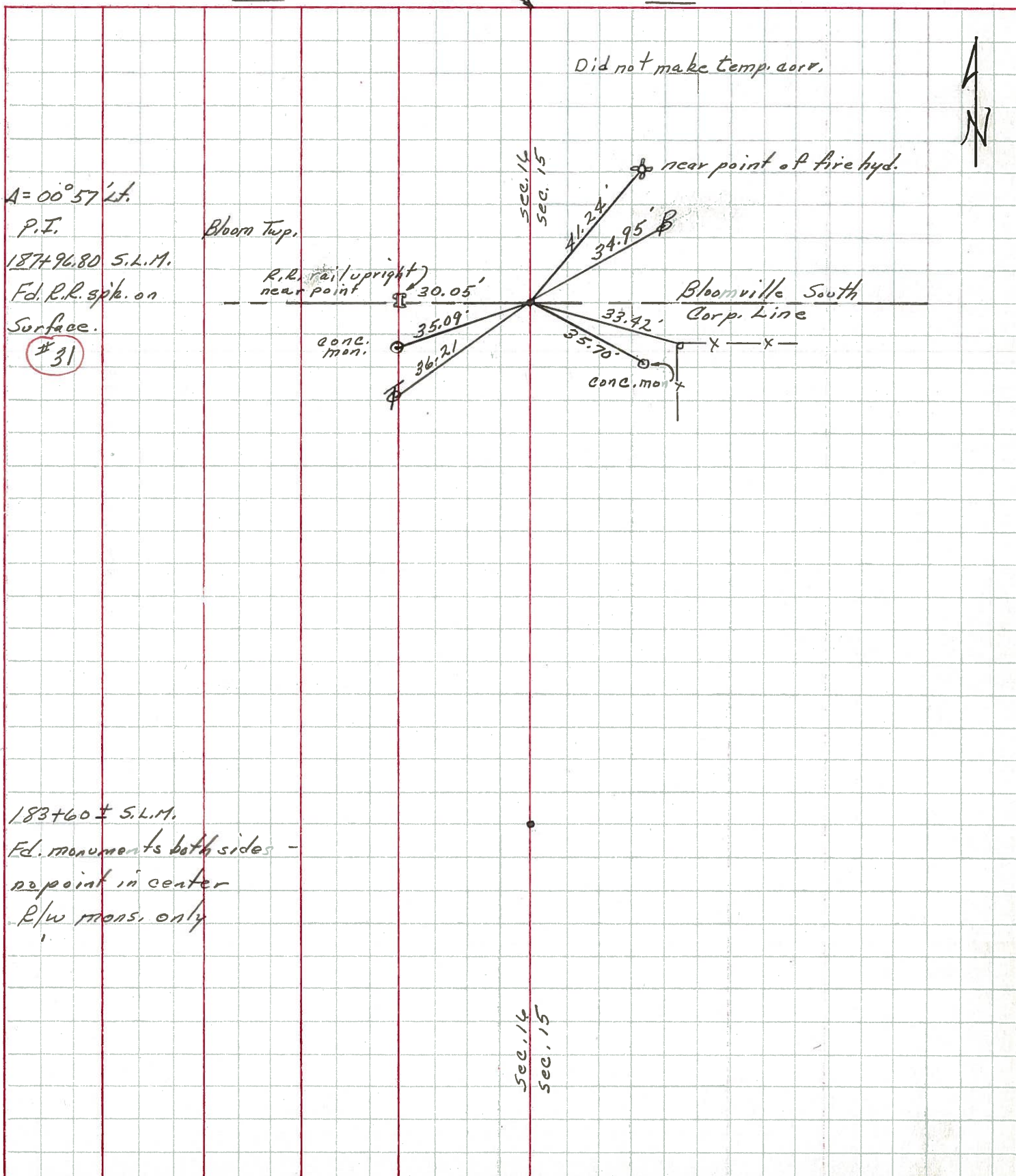
WEATHER cloudy

SEC.

TEMP. 50°

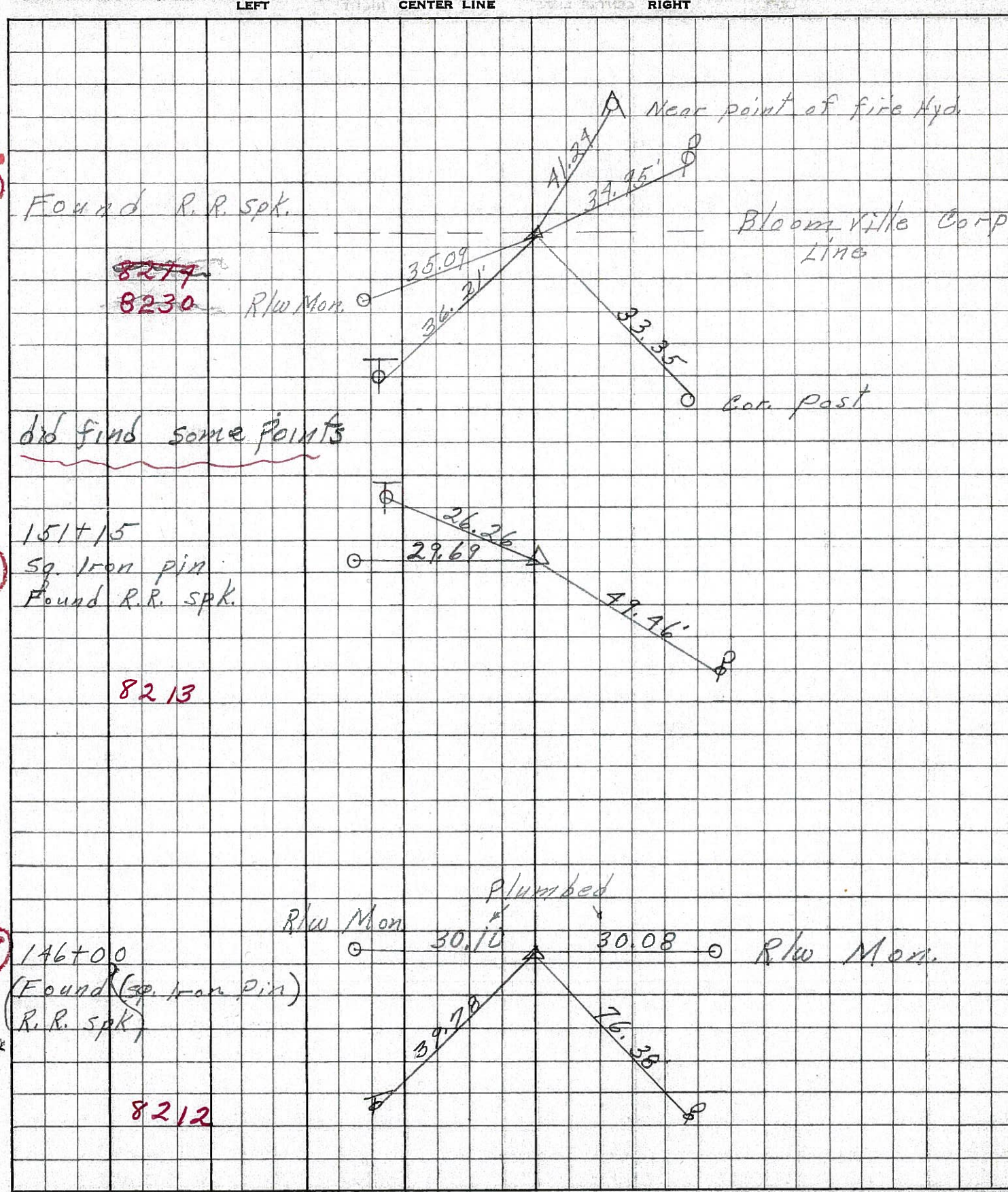
DESCRIPTION Ties for Control Points - Sen. Co. Line North to Bloomville

JOB NO.



PERSONNEL	TITLE	PERSONNEL	TITLE	COUNTY	DATE
Schneider				Seneca	7-28-69
Mosser				S. R. 19	WEATHER Fair
Barbour				SEC. Co. Line to Bloomville	TEMP. 75°
Potts					

DESCRIPTION Tie for Control Points JOB NO. \_\_\_\_\_



PERSONNEL TITLE PERSONNEL TITLE

Hsh

COUNTY Seneca

DATE Apr. '62

&

S. R. # 19 Bloomville

WEATHER Clear

Crew

SEC. Sect. 19 (356-4.41)

TEMP. 60°

DESCRIPTION Control Point & Inter. Ties

JOB NO. Const.

LEFT

West

CENTER LINE - Survey  
S.R. #19

RIGHT

East

Set R.R. Spk.  
7/26/62

P.O.T. 198+18.06  
P.K. Nail

31-A

Set R.R. Spk.  
7/26/62

P.I. 187+96.80

R.R. Spk.

S. Corp. Line Bloomville

$\Delta = 0^\circ - 57' \text{ Lt.}$

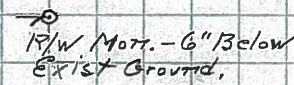
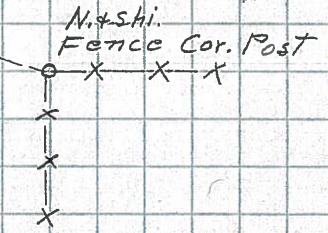
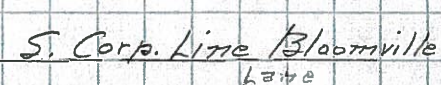
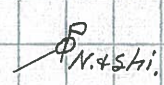
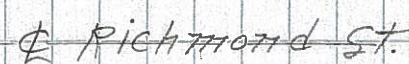
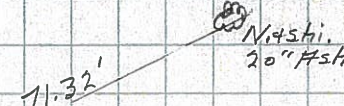
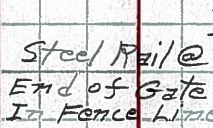
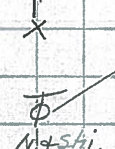
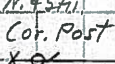
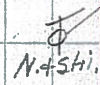
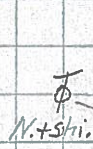
31

Set R.R. Spk.  
7/26/62

P.I. 178+96.38

R.R. Spk. - 4" Below  
Exist. Permit.

30





PERSONNEL TITLE PERSONNEL TITLE

COUNTY Seneca DATE Apr. '62

Msh  
+  
Crew

S. R. # 19 Bloomville WEATHER Clear

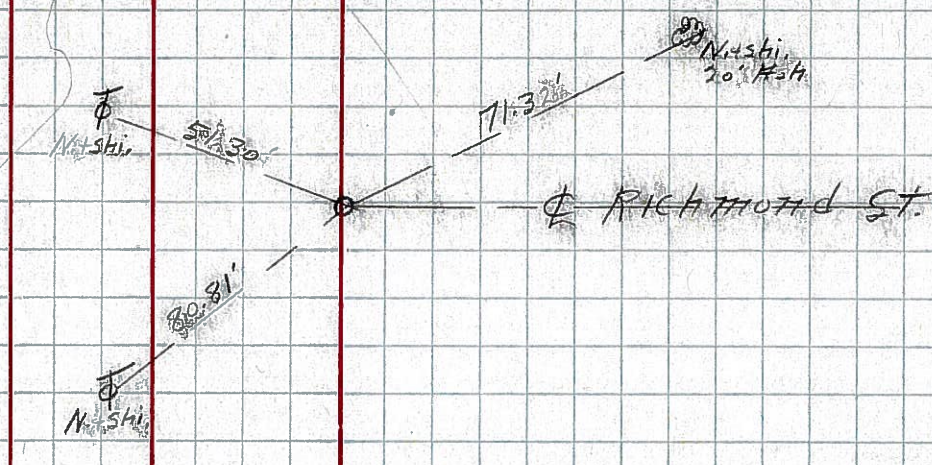
SEC Sen.-19 (356-4A1) TEMP 60°

DESCRIPTION Control Point & Inter Ties JOB NO. COMST.

LEFT WEST CENTER LINE - Survey S.P. # 19 RIGHT EAST

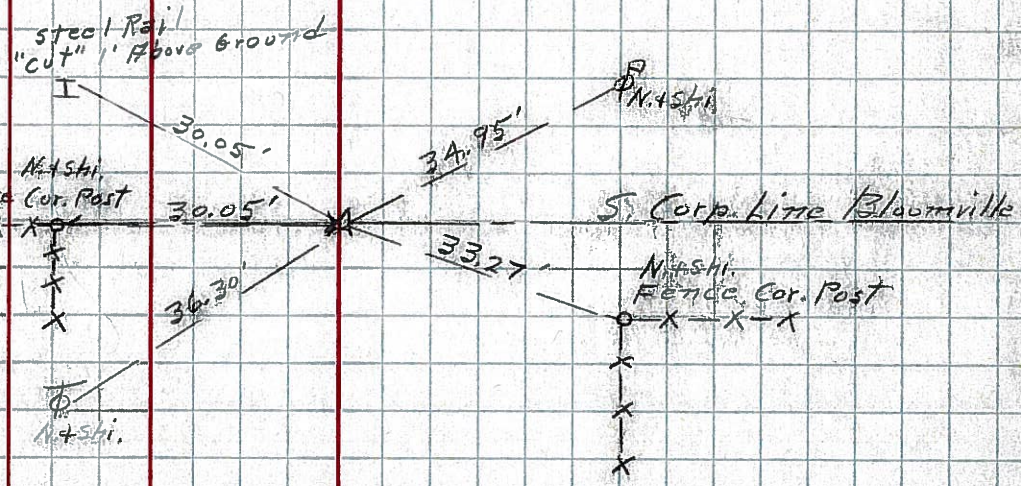
31-A

P.O.T. 198+18.06  
P.M. Nail



31

P.I. 187+96.80  
P.R. SpA  
S. Corp. Line Bloomville  
A = 0° - 57' Lt.



30

P.I. 178+96.38  
P.R. SpA - 4" Below  
Exist. Permit.

