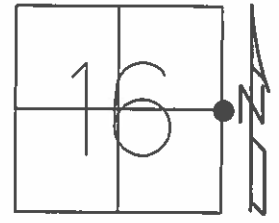


O.D.O.T. DISTRICT 2 SURVEY OFFICE (USE ONLY)

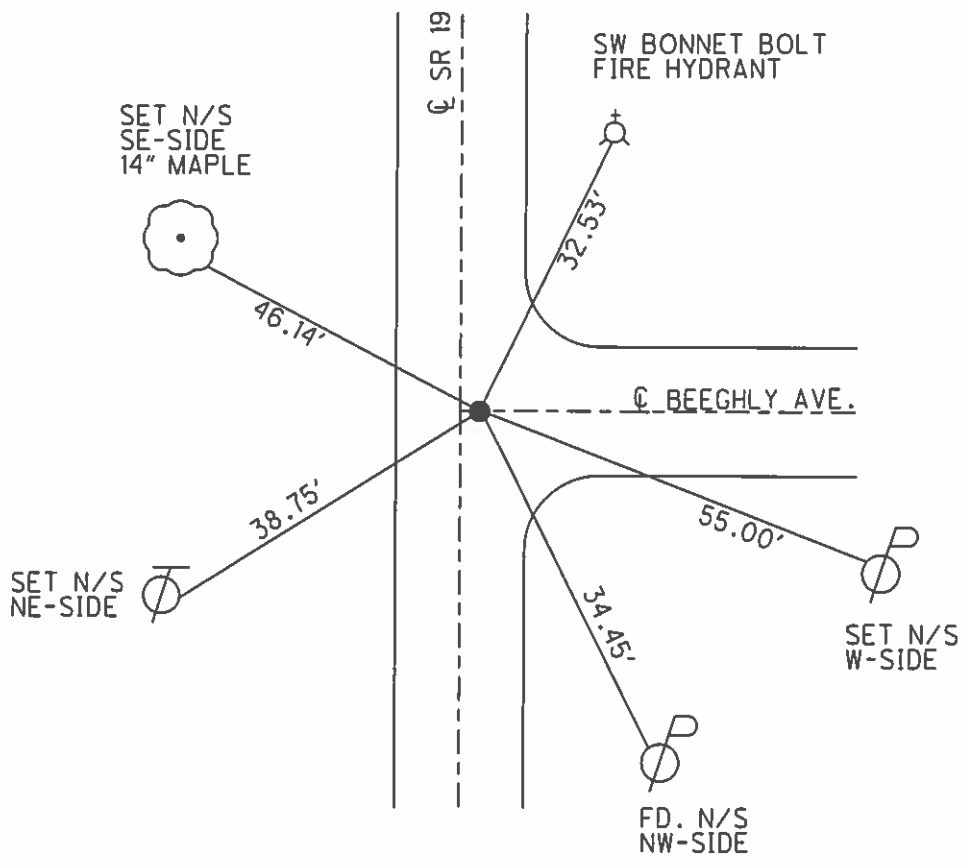
PERSONNEL \_\_\_\_\_ REFERENCE NO. 31 A SHEET 35 OF 64  
 NOTES RHOADES DATE 08-19-2015 ROUTE SR 19  
 H.C. O'DONNELL WEATHER CLOUDY COUNTY SENECA  
 R.C. RHOADES TEMP. 74°F TOWNSHIP BLOOM  
 \_\_\_\_\_ SECTION 16  
 \_\_\_\_\_ T 1 N R 16 E

TYPE MONUMENT PK./WASHER  
 ON SURFACE - ~~BELOW~~ ON \_\_\_\_\_  
~~LEFT~~ - ℄ PAV'T - RIGHT 1.0' RT. /ON CL. EAST  
11.7 TO LT EDGE PAVEMENT  
 S.L.M. 198+34.20  
 Grid: Northing: 503538.5319 Easting: 1826349.9315



RECORD POT  
 STA. 198+18.06  
 PK. ATOP MINE SPIKE  
 10-07-85

- SET PK/WASHER  
09-24-92
- FD PK/WASHER  
12-5-13, JMR
- GPS, REFA31  
01-14-13, JMR
- GPS REFA31  
8-19-15
- SET MAG/W  
GPS, NEWREFA31  
7-20-16



O.D.O.T. DISTRICT 2 SURVEY OFFICE (USE ONLY)

PERSONNEL

REFERENCE NO. 31A

SHEET 35 OF 62

NOTES CANTERBURY

DATE 04-20-06

ROUTE SR 19

H.C. MICKLOVICK

WEATHER SUNNY

COUNTY SENECA

R.C. HANKE

TEMP. +62°

TOWNSHIP BLOOM

SECTION 16

T 1 N R 16 E

TYPE MONUMENT FD. PK./WASHER

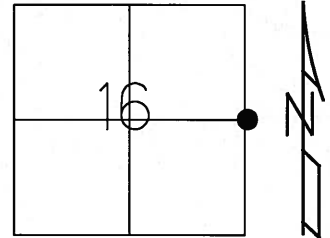
ON SURFACE - ~~BELOW~~ ON SURFACE

~~LEFT~~ - C PAV'T - RIGHT 1.0' RT. /ON CL. EAST

11.7' TO LT. EDGE PAVEMENT

S.L.M. 198+08 (SV35)

Grid: Northing: \_\_\_\_\_ Easting: \_\_\_\_\_



RECORD POT.  
STA. 198+18.06  
PK. ATOP MINE SPK  
10-07-85

SET PK/WASHER  
09-24-92 RCC

SET N/S  
SE-SIDE  
12" MAPLE



46.33'

SR 19

32.51'

SW-BONNET BOLT  
FIRE HYDRANT



☉ PAVT  
BEEGHLY AVE.

55.00'

38.95'

FD. N/S  
NE-SIDE



☉ PAVT

34.43'

SET N/S  
W-SIDE



FD. N/S  
NW-SIDE



O.D.O.T. DISTRICT 2 SURVEY OFFICE

PERSONNEL

REFERENCE NO. 31-A

SHEET 33 OF 53

NOTES RIPPLE

H.C. ISARBOUR

DATE 6-22-92

ROUTE #19

R.C. GREYMAN

WEATHER SUNNY

COUNTY SENECA

CHENEY

TEMP. 70°

TOWNSHIP BLOOM

SECTION 15 & 16

T.1 N. R. 16 E

TYPE MONUMENT P.K./WASHER

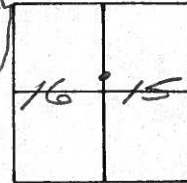
ON SURFACE - ~~BELOW~~ YES

~~LEFT~~ - 0 PAV'T. - RIGHT 0.5' RT

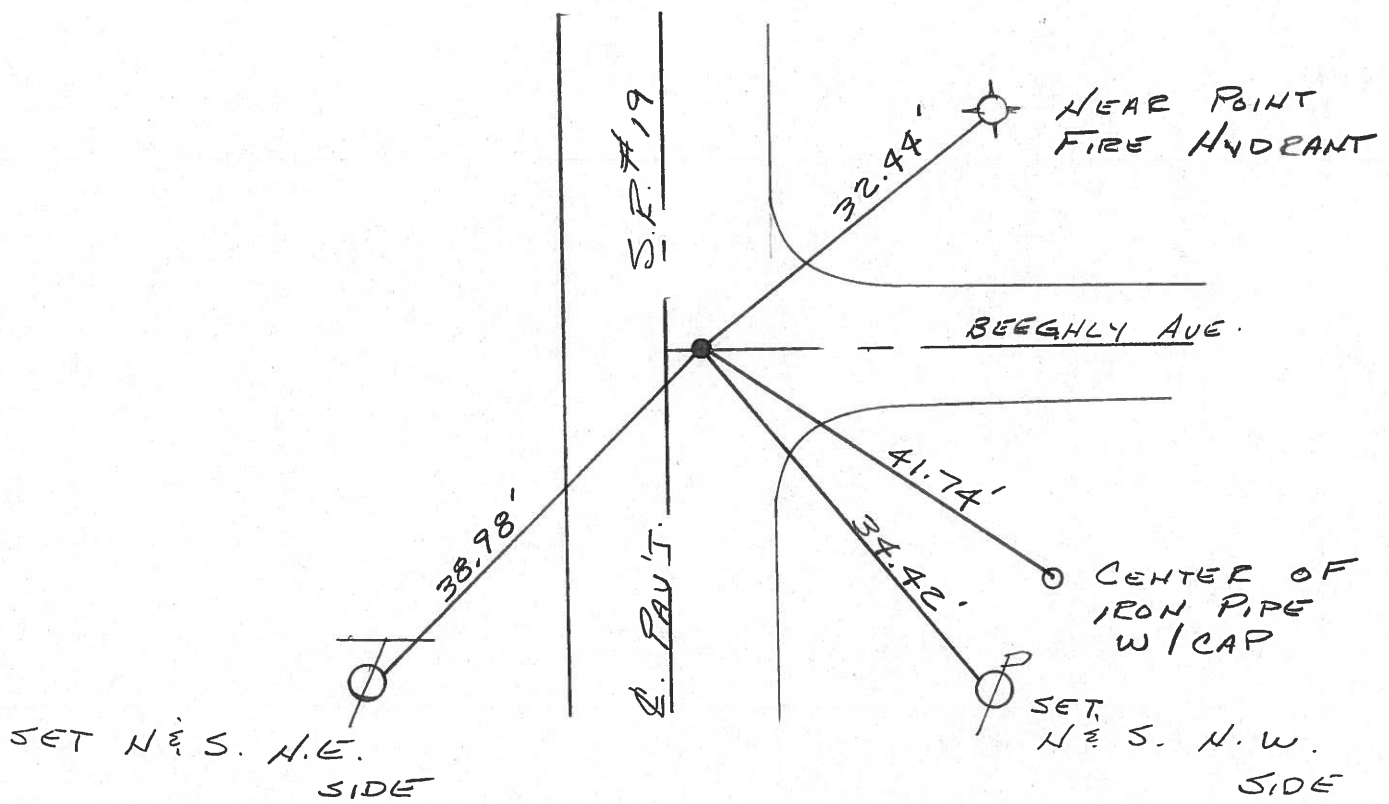
9.5' TO RT. EDGE PAVEMENT

S.L.M. 198+13

SET PK/WASHER  
9-24-1992  
R.C.C.



RECORD: 1017185  
P.O.T. SLM = 198+18.06  
P.K. ATOP MINE SPR.



# O.D.O.T. DISTRICT 2 SURVEY OFFICE

PERSONNEL

REFERENCE NO. \_\_\_\_\_

SHEET 33 OF \_\_\_\_\_

NOTES CROWN VAC

DRAWN 10/22/85

ROUTE #19

H.C. RIPPLE

DATE 10/17/85

COUNTY SENECA

R.C. BARBOUR

WEATHER CLOUDY

TOWNSHIP BLOOM

GEYMAN

TEMP. 67°

SECTION 15 E 16

T. 1 N. R 16 E

TYPE MONUMENT P.K. ATOP NINE SPIKE

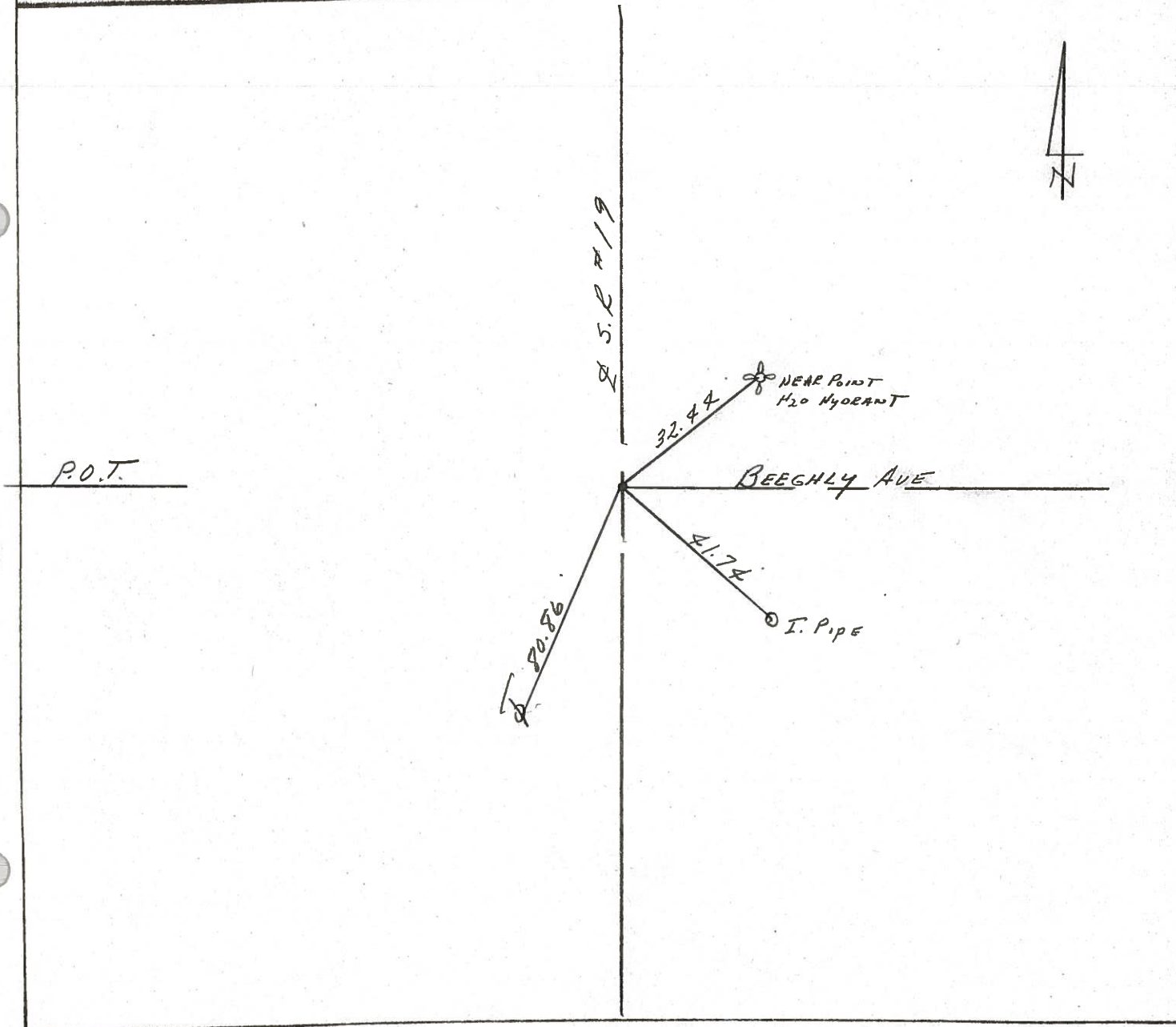
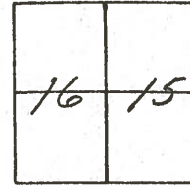
ON SURFACE - BELOW ON SURFACE

LEFT - & PAV'T. - RIGHT 1.5 FT & PAUT

TO EDGE PAVEMENT

S.L.M. 1987 18.06

31-A



County SENECA S.R. 19

Date 7/18/79

Township BLOOM

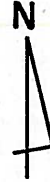
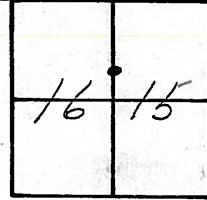
Weather cloudy

Section Either 15 or 16

Temp. 69°

T1N, R16E

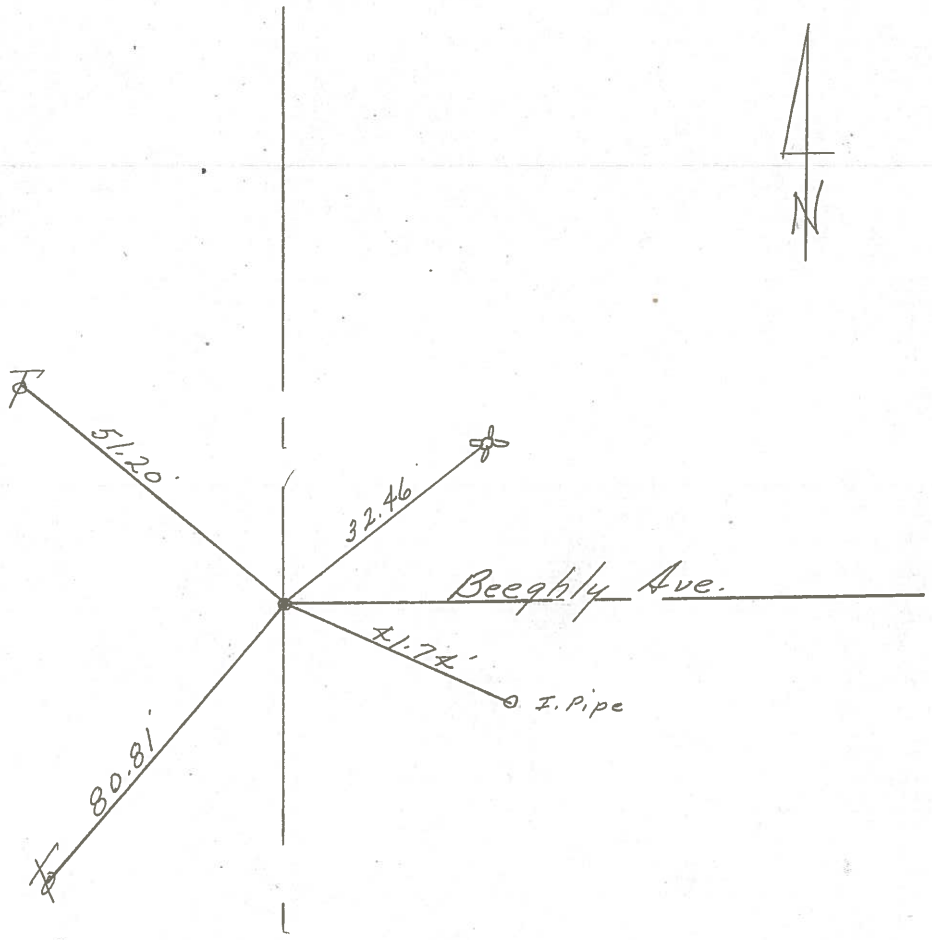
Personnel Cronin  
Ripple  
Geyman



31-A



198+10.06  
found mine spike on  
surface.



S.S.R. #197



PERSONNEL TITLE PERSONNEL TITLE

Ash  
Cronin  
Ripple  
Anderson

COUNTY Seneca

S. R. # 19

WEATHER Cloudy

SEC.

TEMP. 45°

DESCRIPTION Ties for Control Points - Village of Bloomville

JOB NO.

LEFT

CENTER LINE

RIGHT

Did not make temp. corrections

31-BB  
31-B

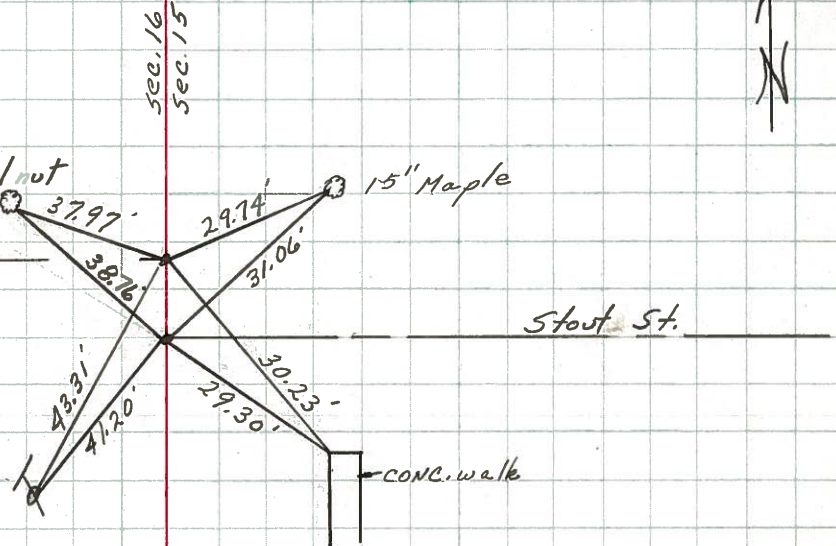
202+51.59  
Fd. R.R. spike on surface  
Fd. R.R. spike on surface  
202+49.08

Bloom Twp.

Stout Dr.

24" Walnut

15" Maple

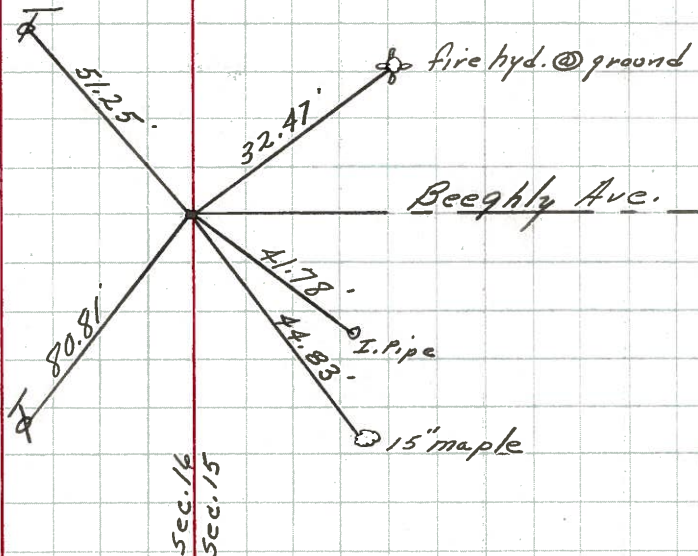


31-A

198+18.06  
Fd. R.R. spike on surface

Bloom Twp.

Beechly Ave.

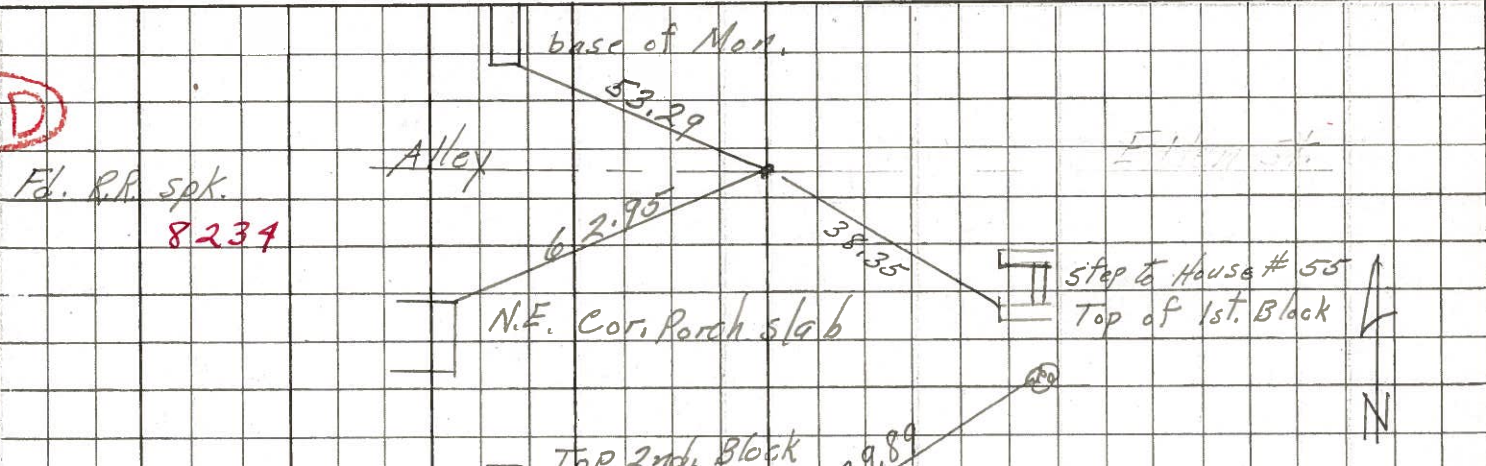




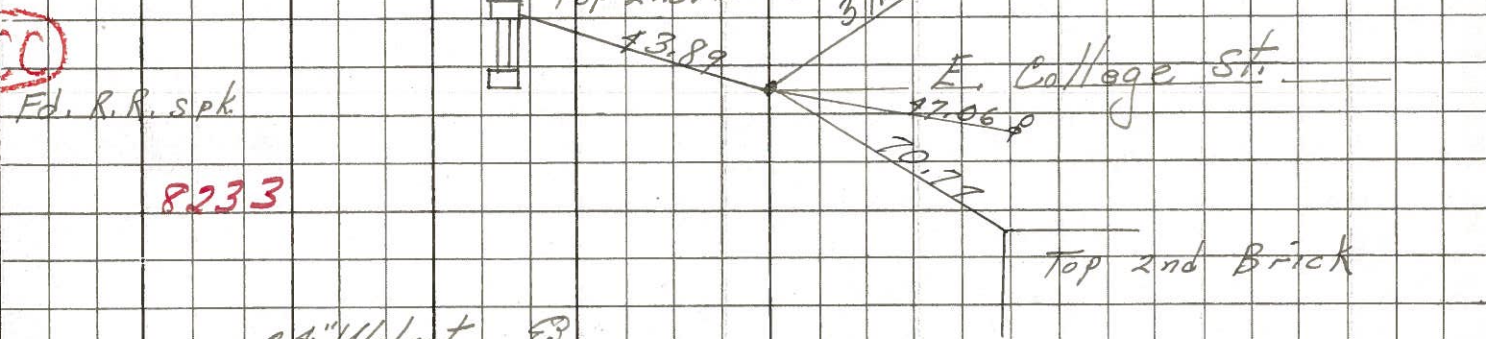
PERSONNEL TITLE PERSONNEL TITLE COUNTY Seneca DATE 7-28-69  
Schneider \_\_\_\_\_  
Masser \_\_\_\_\_ S. R. 19 WEATHER Fair  
Barbour \_\_\_\_\_  
Potts \_\_\_\_\_ SEC. Co. line to Bloomville TEMP. 75°

DESCRIPTION Ties for Control Points JOB NO. \_\_\_\_\_  
 LEFT CENTER LINE RIGHT

31-D



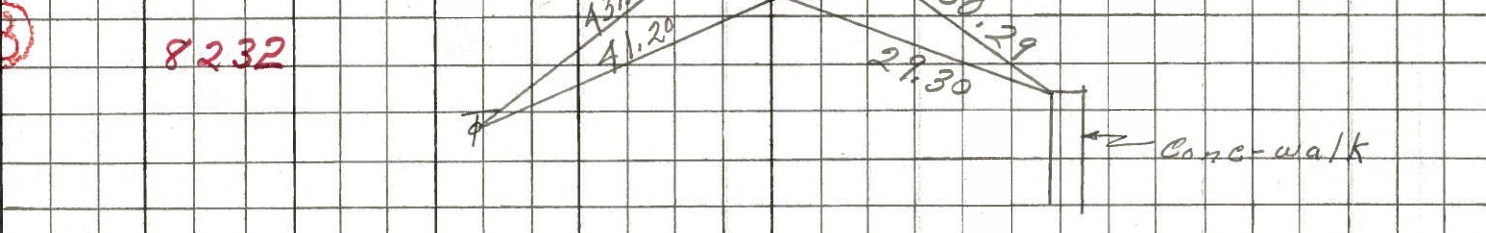
31-CC



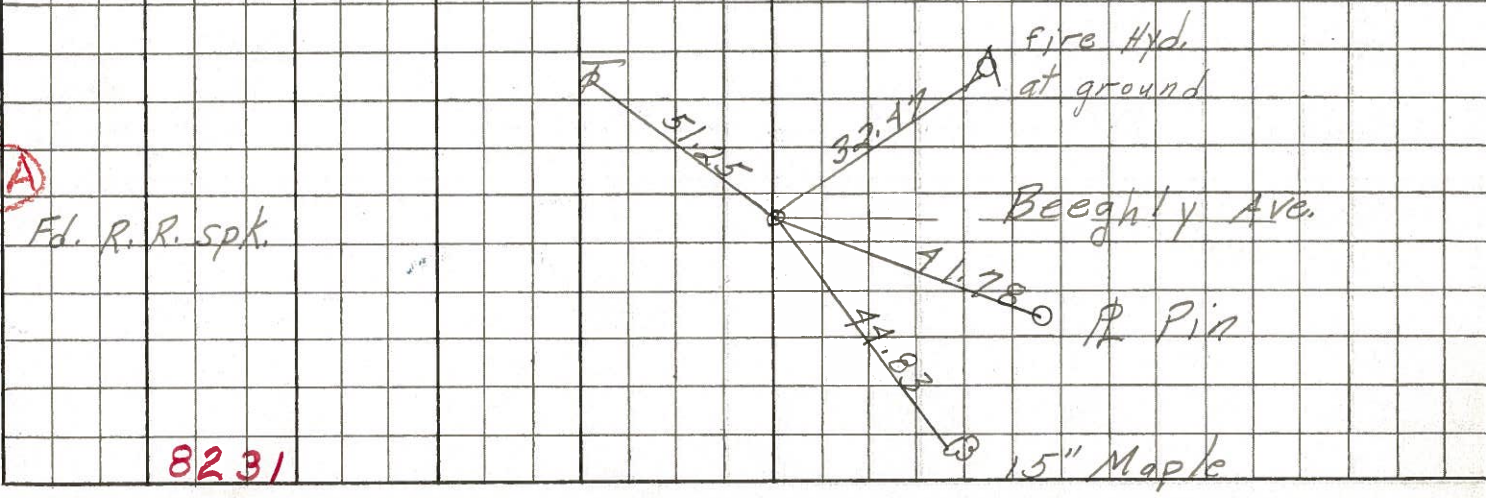
31-BB



31-B



31-A



8231



PERSONNEL TITLE PERSONNEL TITLE

Hsh  
+  
Crew

COUNTY Seneca

DATE Apr. '62

S. R. # 19 Bloomville

WEATHER Clear

SEC. Sen.-19 (3.56-4.41)

TEMP. 60°

DESCRIPTION Control Point & Inter. Ties

JOB NO. Const.

LEFT West CENTER LINE - Survey S.R. #19 RIGHT East

set R.R. Spk.  
7/26/62

P.O.T. 198+18.06  
P.K. Nail

31-A

set R.R. Spk.  
7/26/62

P.I. 187+96.80

R.R. Spk.

S. Corp. Line Bloomville

$\Delta = 0^\circ - 57' Lt.$

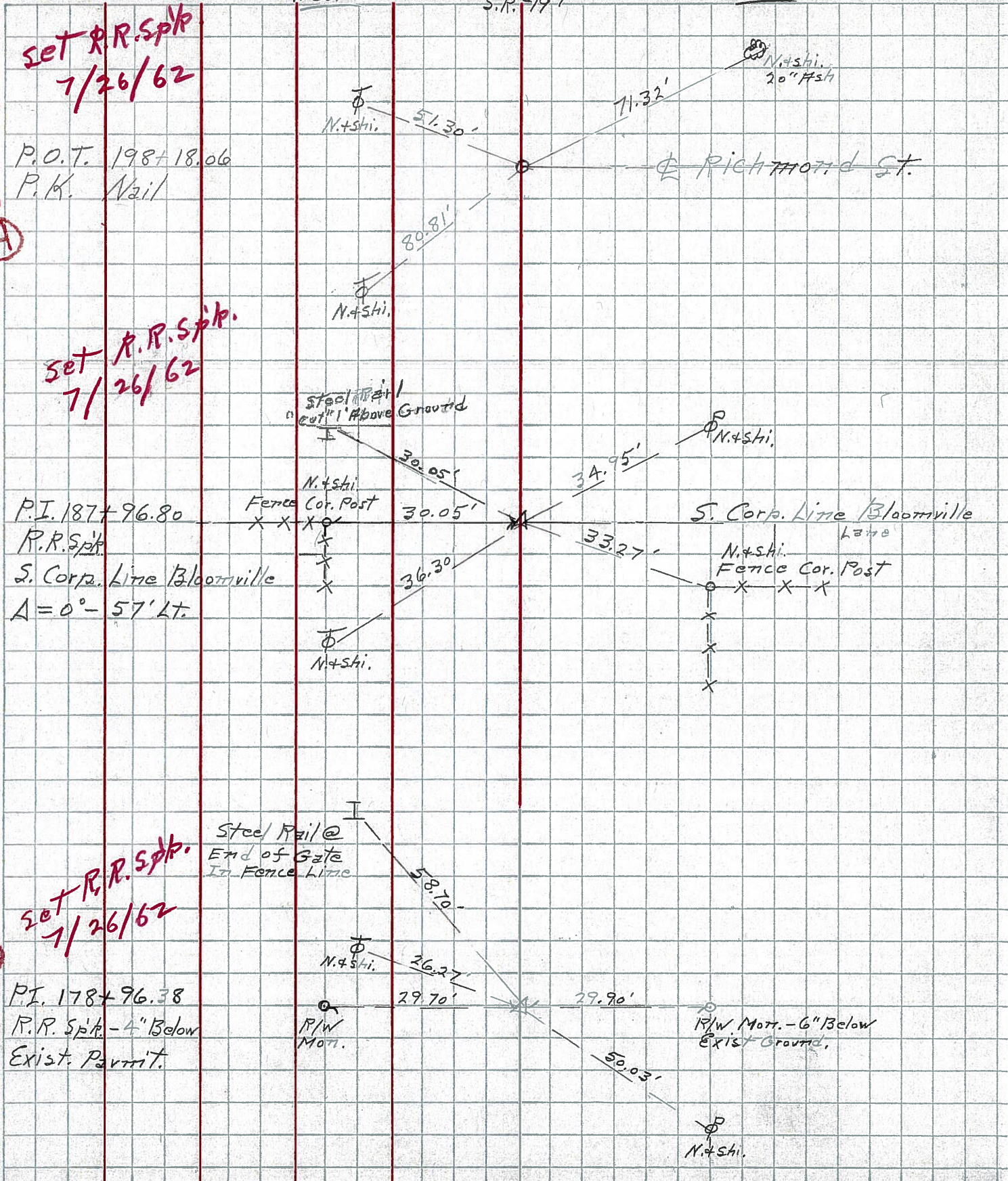
31

set R.R. Spk.  
7/26/62

P.I. 178+96.38

R.R. Spk. - 4" Below  
Exist. Permit.

30





PERSONNEL TITLE PERSONNEL TITLE

COUNTY Semola DATE Apr. '62

HSH  
+ crew

S. R. # 19 Bloomville WEATHER Clear

SEC Sem-19 (356-4A1) TEMP 60°

DESCRIPTION Control Point & Inter. Ties JOB NO. Contst.

LEFT WEST CENTER LINE Survey S.R. #19 RIGHT EAST

31-A

P.O.T. 198+18.06  
P.M. Nail

N. + Shi.

51.30'

71.32'

N. + Shi.  
20" #5H

RICHMOND ST.

31

P.I. 187+96.80  
P.R. Spk.  
S. Corp. Line Bloomville  
A = 0° - 57' Lt.

steel rail  
"cut" 1' above ground

N. + Shi.

30.05'

34.95'

S. Corp Line Bloomville

Fence Cor. Post

30.05'

33.27'

N. + Shi.  
Fence Cor. Post

30

P.I. 178+96.38  
P.R. Spk. - 4" Below  
Exist. Permit.

Steel Rail @  
End of Gate  
In Fence Line

N. + Shi.

36.30'

36.27'

29.70'

33.27'

29.90'

R/W Mark. - 6" Below  
EXIST Ground.

50.03'

N. + Shi.