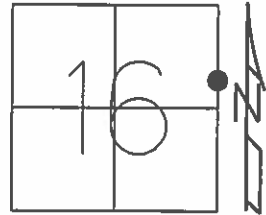


O.D.O.T. DISTRICT 2 SURVEY OFFICE (USE ONLY)

PERSONNEL _____ REFERENCE NO. 31 B SHEET 36 OF 64
 NOTES RHOADES DATE 8-20-15 ROUTE SR 19
 H.C. O'DONNELL WEATHER SUNNY COUNTY SENECA
 R.C. RHOADES TEMP. 64°F TOWNSHIP BLOOM
 _____ SECTION 16
 _____ T 1 N R 16 E

TYPE MONUMENT PK./WASHER
 ON SURFACE - ~~BELOW~~ ON _____
~~LEFT~~ - CL PAV'T - RIGHT 1' RT. / ON CL EAST
10 TO RT EDGE PAVEMENT
 S.L.M. 202+59.42
 Grid: Northing: 503969.4119 Easting: 1826355.2811



RECORD
 STA. 202+49.08
 PK. ATOP MINE SPK
 10-08-85

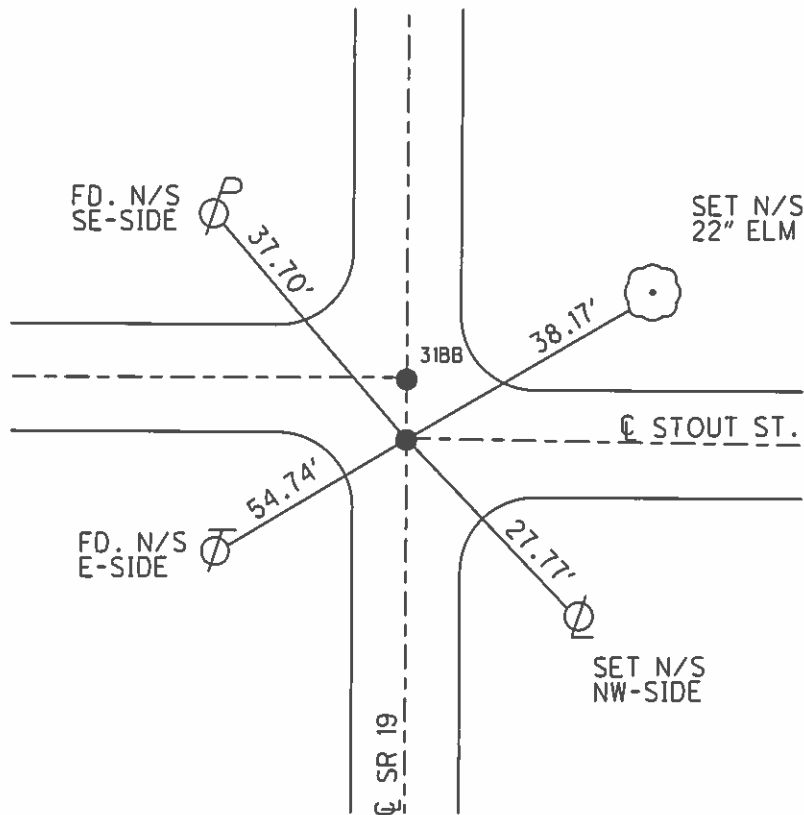
NOTE: 2.54' BETWEEN POINTS

SET PK/WASHER
 09-24-92, JLR

FD MAG
 GPS, REFB31
 01-14-13, EBW, JLL, TR

POINT GONE
 TIES CROSS
 SET AFTER PAVING
 8-20-15

SET MAG/W
 GPS, NEWREFB31
 7-21-16, JFO



O.D.O.T. DISTRICT 2 SURVEY OFFICE (USE ONLY)

PERSONNEL

REFERENCE NO. 31B

SHEET 36 OF 62

NOTES CANTERBURY

DATE 04-20-06

ROUTE SR 19

H.C. MICKLOVICK

WEATHER SUNNY

COUNTY SENECA

R.C. HANKE

TEMP. +62°

TOWNSHIP BLOOM

SECTION 16

T 1 N R 16 E

TYPE MONUMENT FD. PK./WASHER

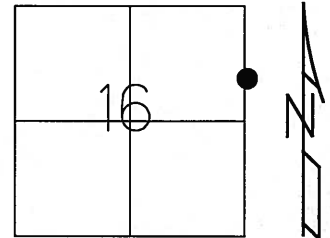
ON SURFACE - ~~BELOW~~ ON SURFACE

~~LEFT~~ - C PAV'T - ~~RIGHT~~ ON CL SR#19 (ON CL EAST)

10' TO RT. EDGE PAVEMENT

S.L.M. 202+40 (SV36)

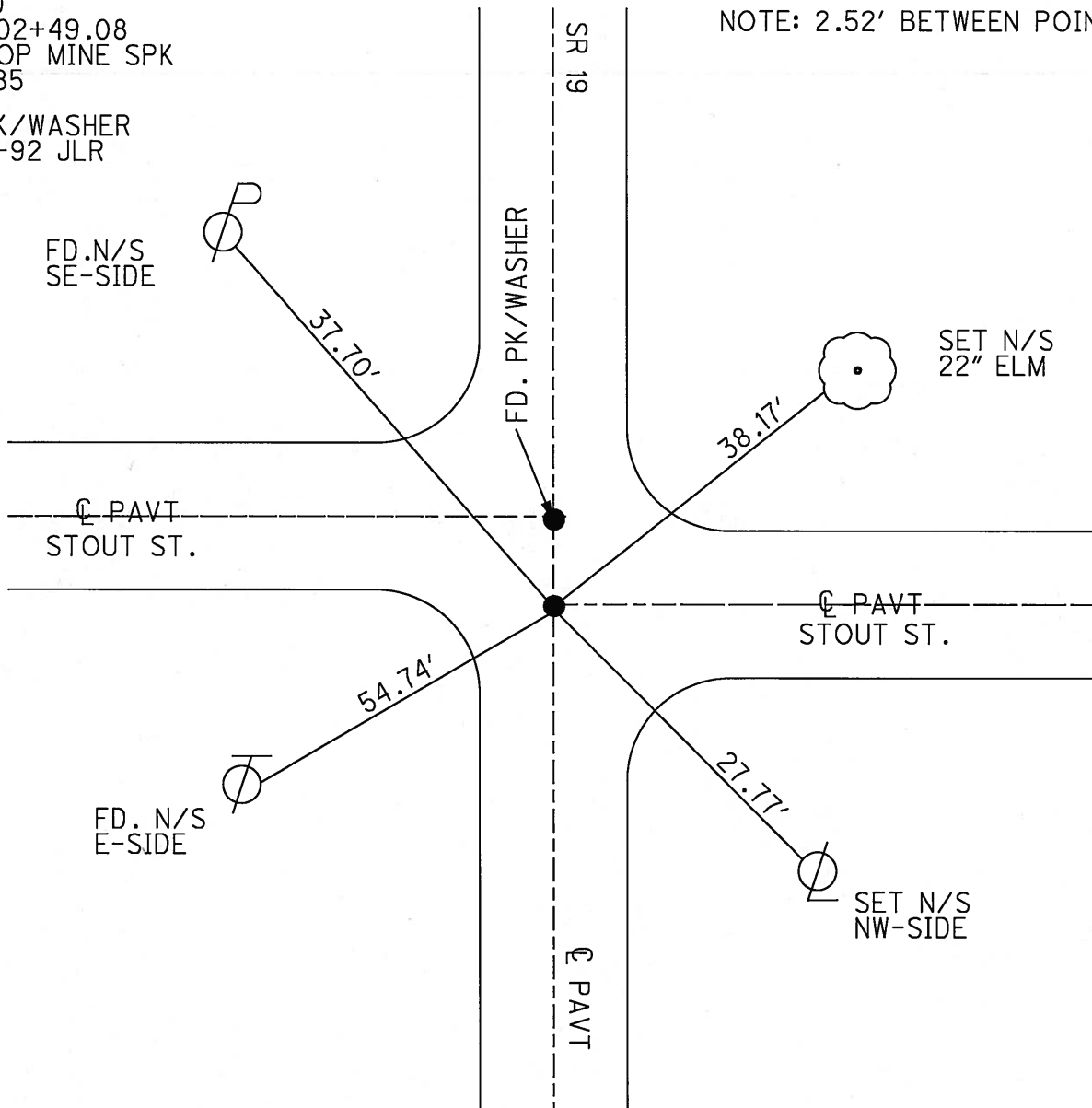
Grid: Northing: _____ Easting: _____



RECORD
STA. 202+49.08
PK. ATOP MINE SPK
10-08-85

SET PK/WASHER
09-24-92 JLR

NOTE: 2.52' BETWEEN POINTS



O.D.O.T. DISTRICT 2 SURVEY OFFICE

PERSONNEL

REFERENCE NO. 31-B

SHEET 34 OF 53

NOTES RIPPLE

H.C. BARBOUR

DATE 6-22-1992

ROUTE #19

R.C. Geyman

WEATHER Sunny

COUNTY Seneca

Cheney

TEMP. 70°

TOWNSHIP Bloom

SECTION 15 & 16

T. 1 N. R 16 E

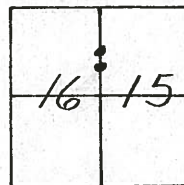
TYPE MONUMENT P.K. & Washer (Both Points)

ON SURFACE - ~~BELOW~~ yes

LEFT - & PAV'T. - ~~RIGHT~~ yes

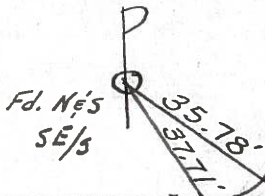
10' TO RT. EDGE PAVEMENT

S.L.M. POt. 202+40 POt. 202+42

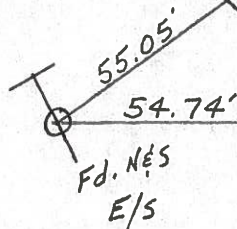


RECORD: 10-8-1985
 PK'S/WASHERS ATOP NINE SPKS,
 STA. 202+49.08 & 202+51.59

BRACE Pole



STOUT ST.



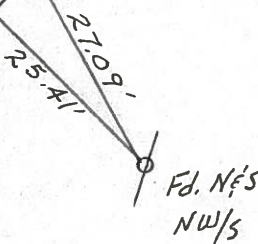
31-B

S.R. 19

L PAVM'T.

SET PK/WASHERS
 9-24-1992
 J.L.R.

STOUT ST.



O.D.O.T. DISTRICT 2 SURVEY OFFICE

PERSONNEL

REFERENCE NO. _____

SHEET 34 OF _____

NOTES CROWIN Vac

DRAWN 10/22/85

ROUTE #19

H.C. RIPPLE

DATE 10/8/85

COUNTY SENECA

R.C. BARBOUR

WEATHER SUNNY

TOWNSHIP BLOOM

GEYMAN

TEMP. 63°

SECTION 15 & 16

T. 1 N. R. 16 E.

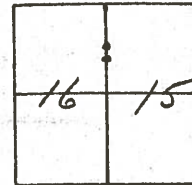
TYPE MONUMENT P.K. SPIKES WASHERS ATOP MINE

ON SURFACE - BELOW OW SURFACE

LEFT - C PAV'T. - RIGHT E PAV'T.

TO EDGE PAVEMENT

S.L.M. _____



P.O.T.

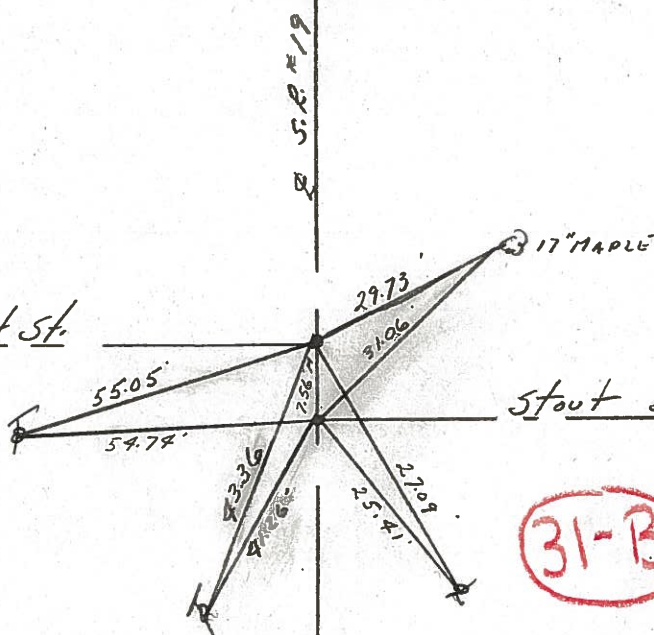
202+51.59

P.O.T.

202+49.08

Stout St.

Stout St.



31-B

County SENECA S.R. 19

Date 7/18/79

Township BLOOM

Weather cloudy

Section Either 15 or 16

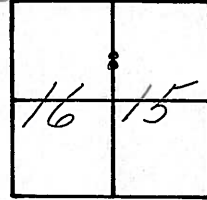
Temp. 69°

T/N, R/E

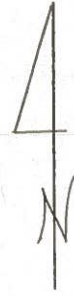
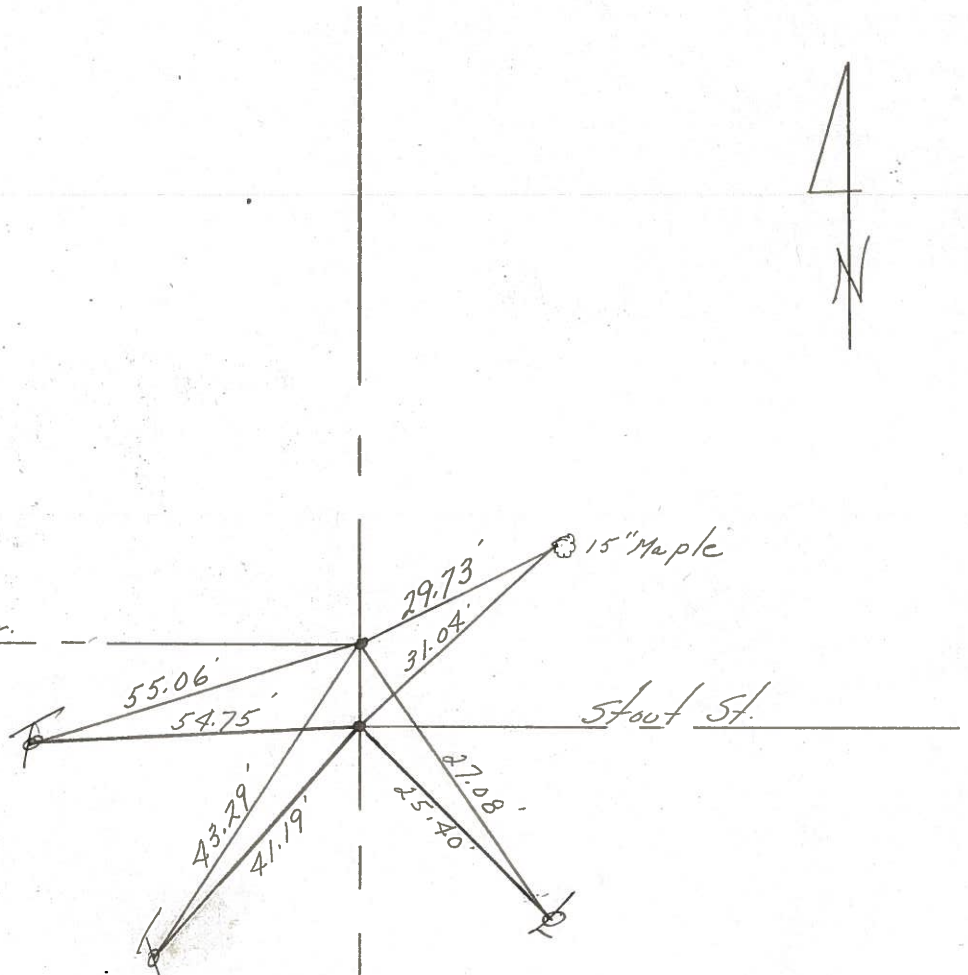
Personnel Cronin

Ripple

Geyman



102+51.59
Ed. mine Stout Dr.
spike on surface
102+49.08
Ed. mine spike
on surface



31-B

S.R. # 19 B

PERSONNEL TITLE PERSONNEL TITLE

Ash

Cronin

Ripple

Anderson

COUNTY Seneca

S. R. #19

SEC.

WEATHER cloudy

TEMP. 45°

DESCRIPTION Ties for Control Points - Village of Bloomville

JOB NO.

LEFT

CENTER LINE

RIGHT

Did not make temp. corrections

31-BB

31-B

202+51.59

Fd. R.R. spike on surface

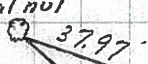
Fd. R.R. spike on surface

202+49.08

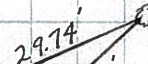
Bloom Twp.

Stout Dr.

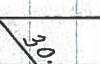
24" Walnut



15" Maple



Stout St.



CONC. walk

31-A

198+18.06

Fd. R.R. spike on surface

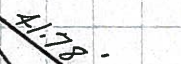
Bloom Twp.



fire hyd. @ ground



Beeghly Ave.



15" maple

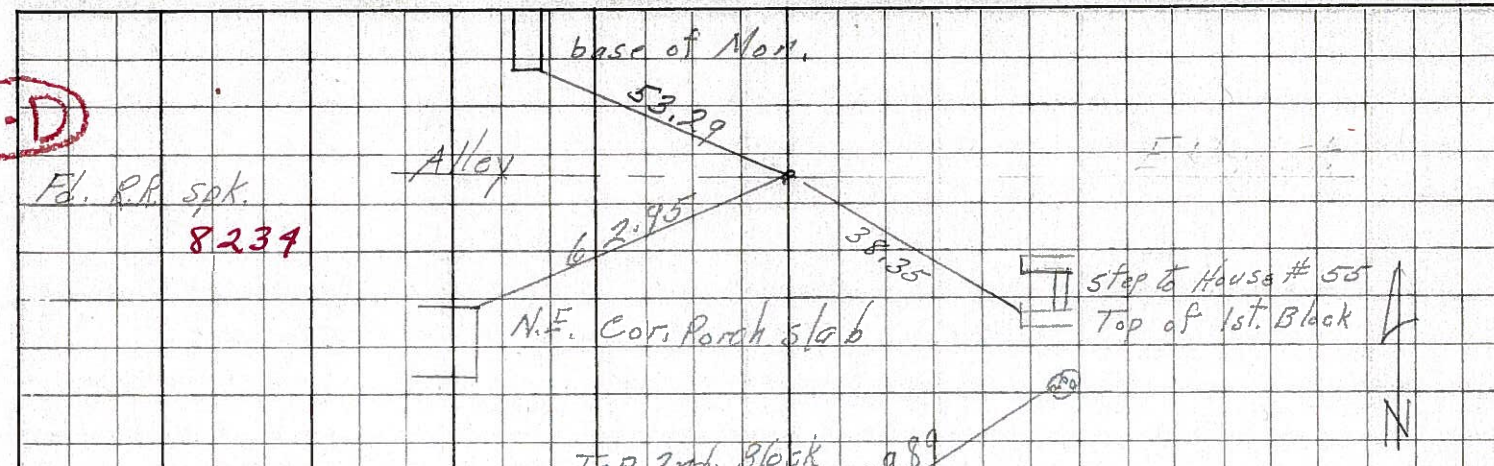
sec. 16
sec. 15



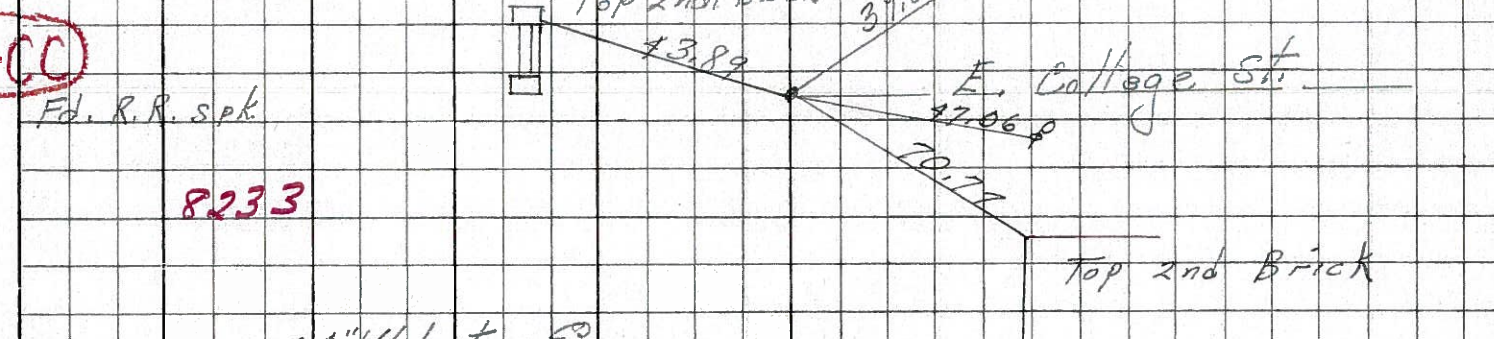
PERSONNEL	TITLE	PERSONNEL	TITLE	COUNTY	<u>Seneca</u>	DATE	<u>7-28-69</u>
<u>Schneider</u>				S. R.	<u>19</u>	WEATHER	<u>Fair</u>
<u>Mosser</u>				SEC.	<u>Continue to Bloomville</u>	TEMP.	<u>75°</u>
<u>Barbour</u>							
<u>Potts</u>							

DESCRIPTION Ties for Control Points JOB NO. _____

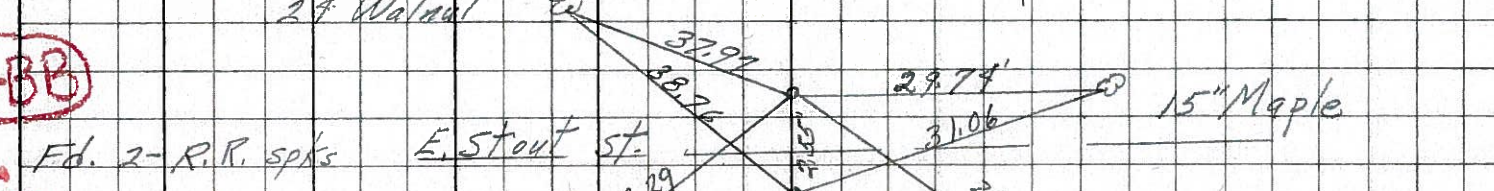
31-D



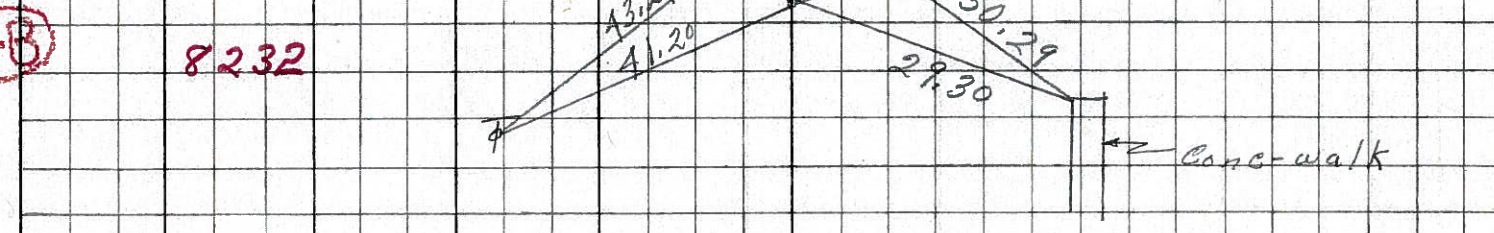
31-CC



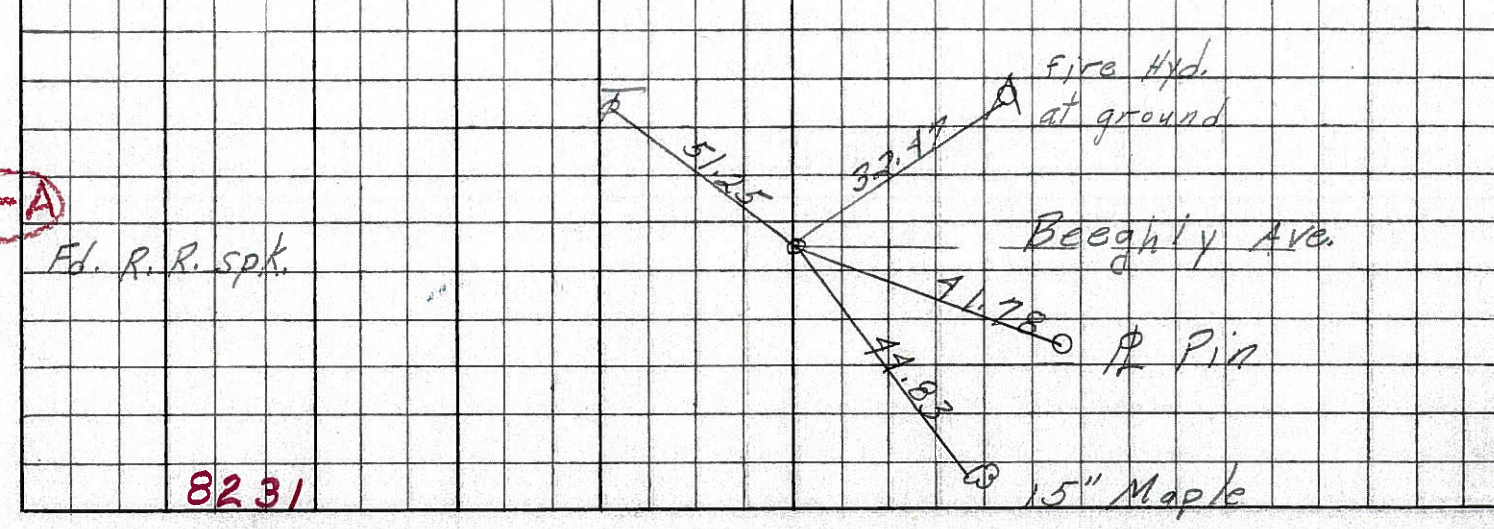
31-BB



31-B



31-A



PERSONNEL TITLE PERSONNEL TITLE

17sh
&
Crew

COUNTY Seneca DATE Apr. '62

S. R. #19 Bloomville WEATHER Clear

SEC. Sen.-19(3.56-4.41) TEMP. 60°

DESCRIPTION Control Point & Inter. Ties JOB NO. Const.

LEFT West CENTER LINE - Survey S.R. #19 RIGHT East

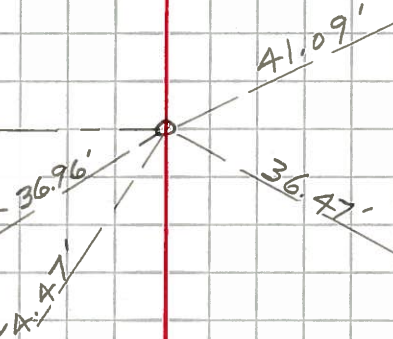
31-D

Set P.R. Spk.
7/26/62

P.O.T. 206+48.55
P.K. Nail

⊕ Hill

N. + shi. Cor. Post
Board Fence



N. + shi.
24" Maple

31-Cc

Set P.R. Spk.
7/26/62

P.O.T. 204+78.71
P.K. Nail

N. shi.
30" Maple

25.68'

39.90'

⊕ College St.

N. + shi.
6" Maple

N. + shi.
30" Maple

31-C

Set P.R. Spk.
7/26/62

P.O.T. 204+40.08
P.K. Nail

⊕ Alley

N. + shi.
30" Elm

27.51'

47.04'

N. + shi.

N. + shi.
24" Elm

36.58'

30.60'

N. + shi.
20" Maple

31-BB

Set P.R. Spk.
7/26/62

P.O.T. 202+51.59
P.K. Nail

⊕ Alley

N. + shi.
20" Walnut

37.99'

29.72'

N. + shi.
15" Maple

38.79'

31.06'

31-B

Set P.R. Spk.
7/26/62

P.O.T. 202+49.08
P.K. Nail

⊕ Alley

N. + shi.
41.20'

41.28'

PERSONNEL TITLE PERSONNEL TITLE

COUNTY Seneca DATE Apr. 1962

HSH
&
Craw

S. R. #19 Bloomville WEATHER C/10

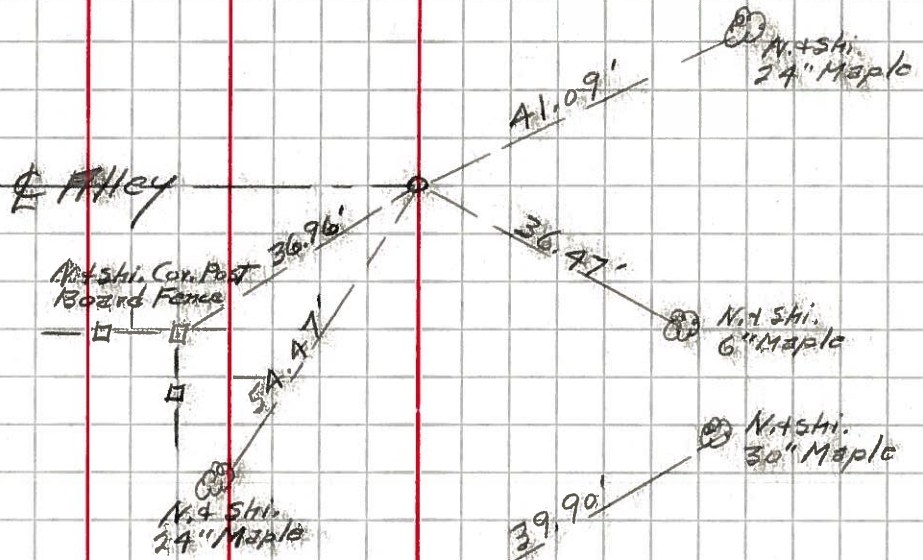
SEC. 19 (3.56-4.41) TEMP. 60°

DESCRIPTION Control Point + Inter. Ties JOB NO. Const.

LEFT West CENTER LINE - Survey S.R. #19 RIGHT East

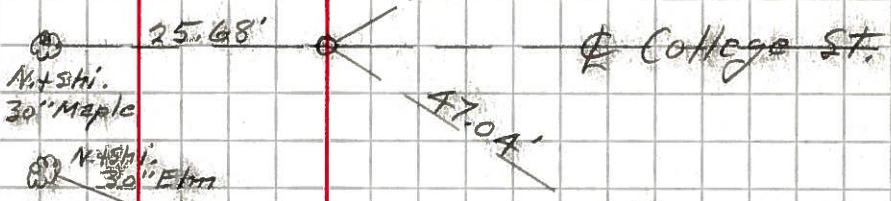
31-D

P.O.T. 206+48.55
P.K. Nail



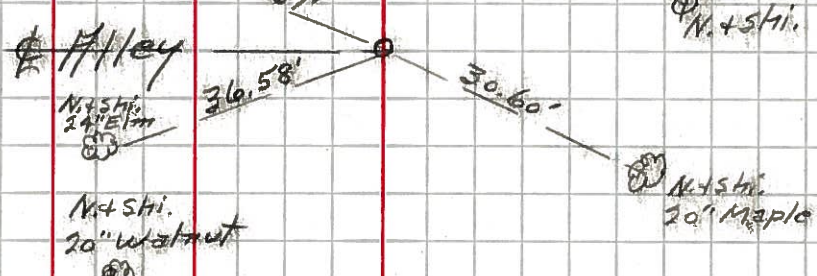
31-CC

P.O.T. 204+78.71
P.K. Nail



31-C

P.O.T. 204+40.08
P.K. Nail



31-BB

P.O.T. 202+51.59
P.K. Nail



31-B

P.O.T. 202+49.08
P.K. Nail

