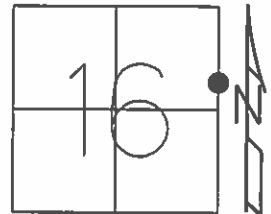


O.D.O.T. DISTRICT 2 SURVEY OFFICE (USE ONLY)

PERSONNEL \_\_\_\_\_ REFERENCE NO. 31 BB SHEET 37 OF 64  
 NOTES RHOADES DATE 8-20-15 ROUTE SR 19  
 H.C. O'DONNELL WEATHER SUNNY COUNTY SENECA  
 R.C. RHOADES TEMP. 64°F TOWNSHIP BLOOM  
 \_\_\_\_\_ SECTION 16  
 \_\_\_\_\_ T 1 N R 16 E

TYPE MONUMENT PK./WASHER  
 ON SURFACE - ~~BELOW~~ ON \_\_\_\_\_  
 LEFT - ☉ PAV'T - RIGHT 1' (ON CL WEST)  
10' TO RT. EDGE PAVEMENT  
 S.L.M. 202+65.17



Grid: Northing: 503971.985 Easting: 1826355.3356

RECORD  
 STA. 202+51.59  
 PK. ATOP MINE SPK  
 10-08-85

NOTE: 2.54' BETWEEN POINTS

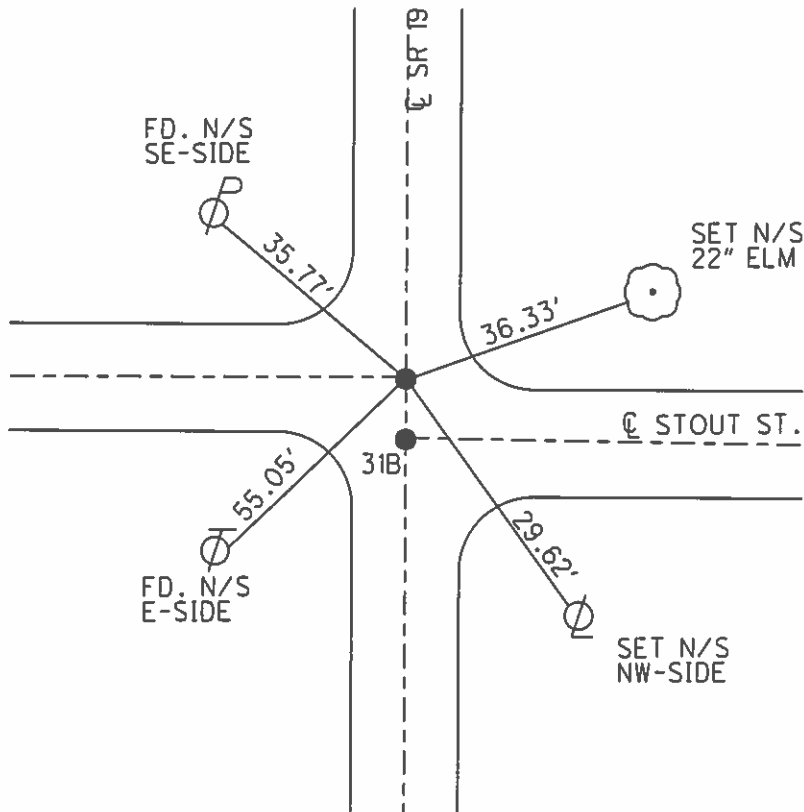
SET PK/WASHER  
 09-24-92, JLR

FD PK/W  
 12-5-13, JMR

FD MAG  
 GPS, REFBB31  
 01-14-13, EBW, JLL, TR

POINT GONE  
 TIES CROSS  
 SET AFTER PAVING  
 8-20-15

SET MAG/W  
 GPS, NEWREFBB31  
 7-21-16, JFO



O.D.O.T. DISTRICT 2 SURVEY OFFICE (USE ONLY)

PERSONNEL

REFERENCE NO. 31BB

SHEET 37 OF 62

NOTES CANTERBURY

DATE 04-20-06

ROUTE SR 19

H.C. MICKLOVICK

WEATHER SUNNY

COUNTY SENECA

R.C. HANKE

TEMP. +62°

TOWNSHIP BLOOM

SECTION 16

T 1 N R 16 E

TYPE MONUMENT FD. PK./WASHER

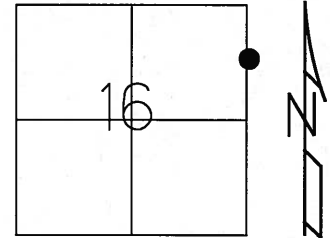
ON SURFACE - ~~BELOW~~ ON SURFACE

~~LEFT~~ - C PAV'T - ~~RIGHT~~ ON CL SR#19 (ON CL WEST)

10' TO RT. EDGE PAVEMENT

S.L.M. 202+42 (SV37)

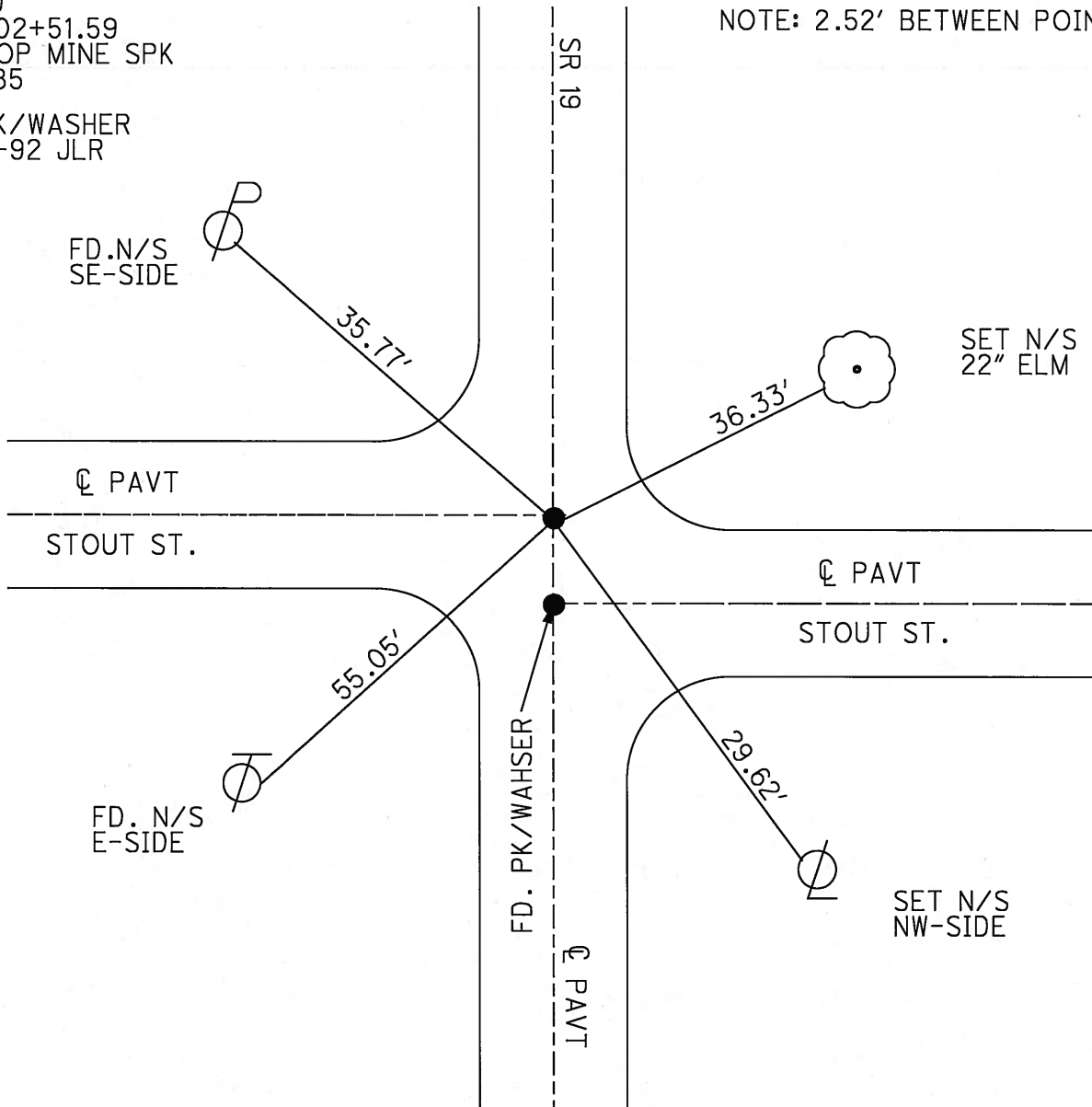
Grid: Northing: \_\_\_\_\_ Easting: \_\_\_\_\_



RECORD  
STA. 202+51.59  
PK. ATOP MINE SPK  
10-08-85

SET PK/WASHER  
09-24-92 JLR

NOTE: 2.52' BETWEEN POINTS



O.D.O.T. DISTRICT 2 SURVEY OFFICE

PERSONNEL

REFERENCE NO. 31-B

SHEET 34 OF 53

NOTES RIPPLE

H.C. BARBOUR

DATE 6-22-1992

ROUTE #19

R.C. Geyman

WEATHER Sunny

COUNTY Seneca

Cheney

TEMP. 70°

TOWNSHIP Bloom

SECTION 15 & 16

T. 1 N. R 16 E

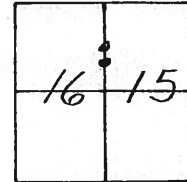
TYPE MONUMENT P.K. & Washer (Both Points)

ON SURFACE - ~~BELOW~~ yes

~~LEFT - & PAV'T.~~ RIGHT yes

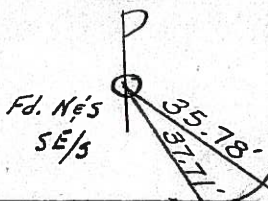
10' TO RT. EDGE PAVEMENT

S.L.M. P.O.T. 202+40 P.O.T. 202+42



RECORD: 10-8-1985  
 PK's/WASHERS ATOP NINE SPKS.  
 STA. 202+49.08 & 202+51.59

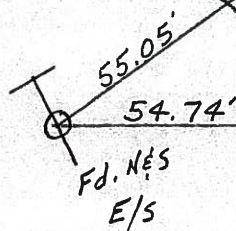
BRACE Pole



STOUT ST.

**31-BB**

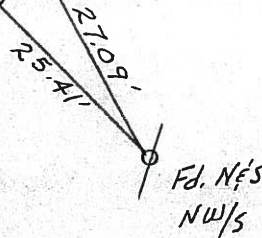
SET PK/WASHERS  
 9-24-1992  
 J.L.R.



S.R. 19

& PAVM'T.

STOUT ST.



# O.D.O.T. DISTRICT 2 SURVEY OFFICE

PERSONNEL \_\_\_\_\_

REFERENCE NO. \_\_\_\_\_

SHEET 34 OF \_\_\_\_\_

NOTES CROWIN Vac

DRAWN 10/22/85

H.O. RIPPLE

DATE 10/8/85

R.C. BARBOUR

WEATHER SUNNY

GEYMAN

TEMP. 63°

ROUTE #19

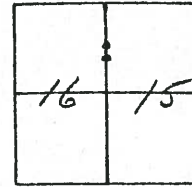
COUNTY SENECA

TOWNSHIP BLOOM

SECTION 15 & 16

T. 1 N. R. 16 E.

TYPE MONUMENT P.K.S. & WASHERS ATOP MINE  
 ON SURFACE - BELOW ON SURFACE  
 LEFT - & PAV'T. - RIGHT & PAV'T.  
 TO \_\_\_\_\_ EDGE PAVEMENT  
 S.L.M. \_\_\_\_\_



P.O.T.

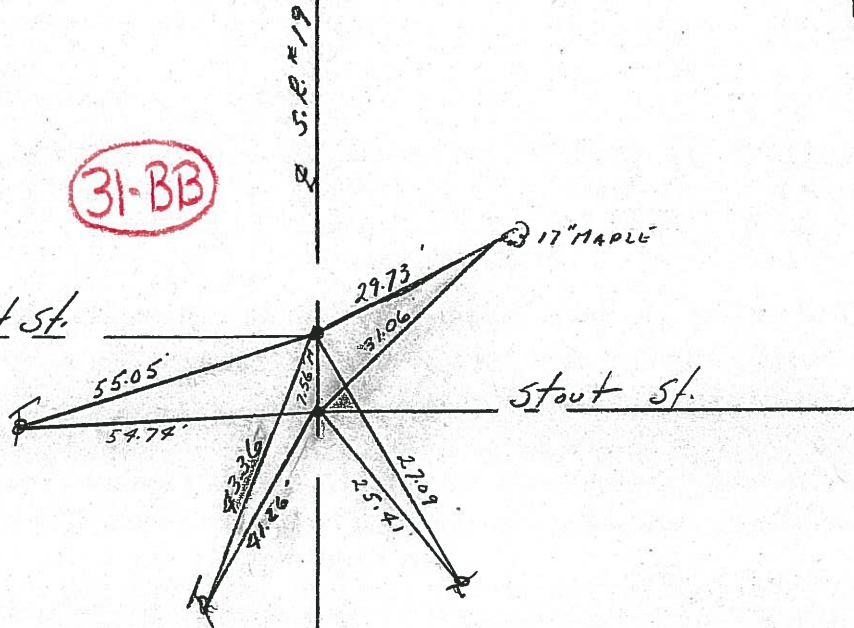
202+51.59

P.O.T.

202+49.08

Stout St.

Stout St.



31-BB



County SENECA S.R. 19

Date 7/18/79

Township BLOOM

Weather cloudy

Section Either 15 or 16

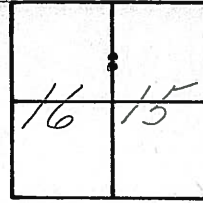
Temp. 69°

T/N, R/E

Personnel Cronin

Ripple

Geyman



31-BB



02+51.59

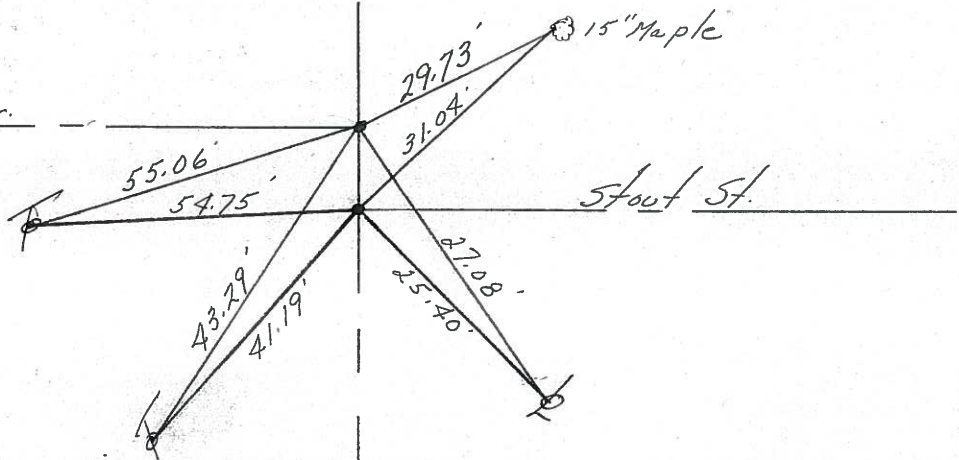
d. mine Stout Dr.

spike on surface

02+49.08

d. mine spike

on surface



25.40' 19

PERSONNEL TITLE PERSONNEL TITLE

COUNTY Seneca

Drawn 3 17 172

DATE 2 12 172

Ash

S. R. # 19

WEATHER Cloudy

Cronin

Ripple

Anderson

SEC.

TEMP. 45°

DESCRIPTION Ties for Control Points - Village of Bloomville

JOB NO.

LEFT

CENTER LINE

RIGHT

31-BB

31-B

202+51.59

Fd. R.R. spike on surface

Fd. R.R. spike on surface

202+49.08

Bloom Twp

Stout Dr.

24" Walnut

37.97'

38.76'

43.31'

41.20'

Sec. 16  
Sec. 15

Did not make temp. corrections



15" Maple

29.74'

31.06'

30.23'

29.30'

Stout St.

CONC. walk

31-A

198+18.06

Fd. R.R. spike on surface

Bloom Twp

51.25'

80.81'

Sec. 16  
Sec. 15

fire hyd. @ ground

32.41'

41.78'

44.83'

Beeghly Ave.

D.I. Pipe

15" maple

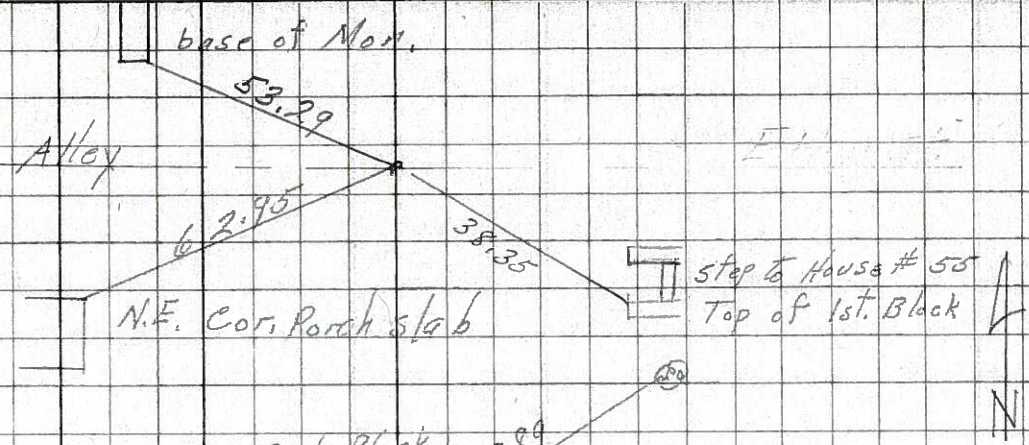
PERSONNEL	TITLE	PERSONNEL	TITLE	COUNTY	DATE
Schneider				Seneca	7-28-69
Mosser				S. R. 19	WEATHER Fair
Barbour				SEC. <del>Center line to</del> Bloomville	TEMP. 75°
Potts					

DESCRIPTION Ties for control points JOB NO. \_\_\_\_\_

LEFT CENTER LINE RIGHT

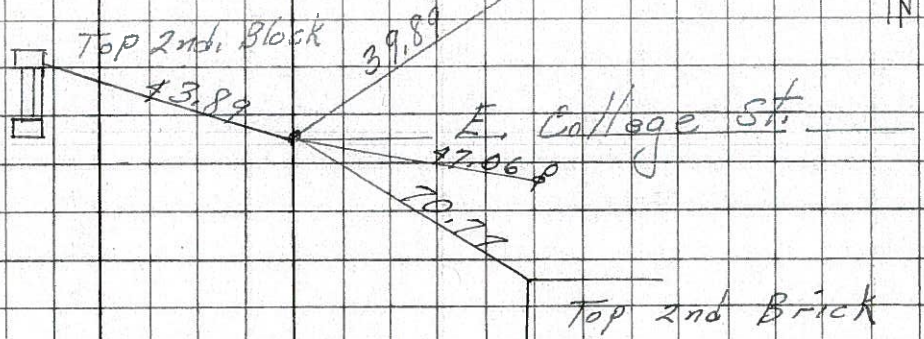
31-D

Fd. R.R. spk. 8234



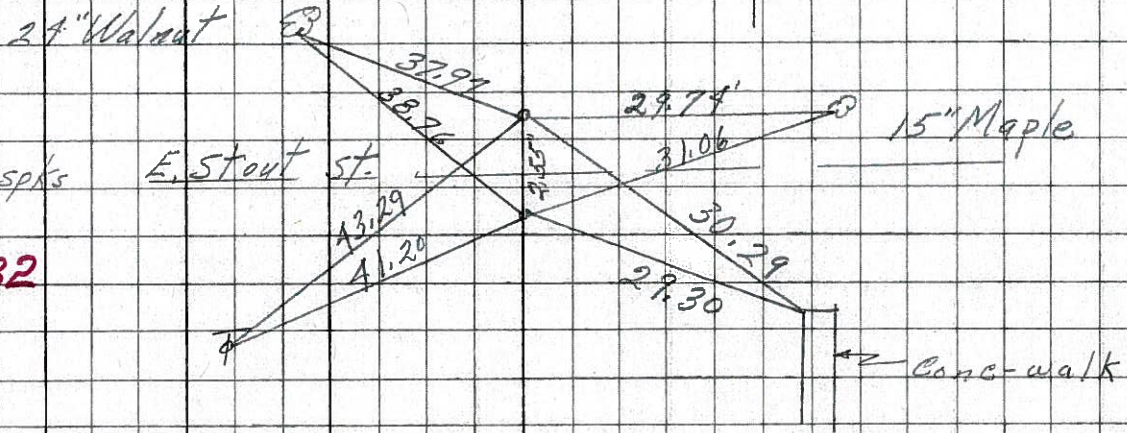
31-CC

Fd. R.R. spk. 8233



31-BB

Fd. 2-R.R. spks

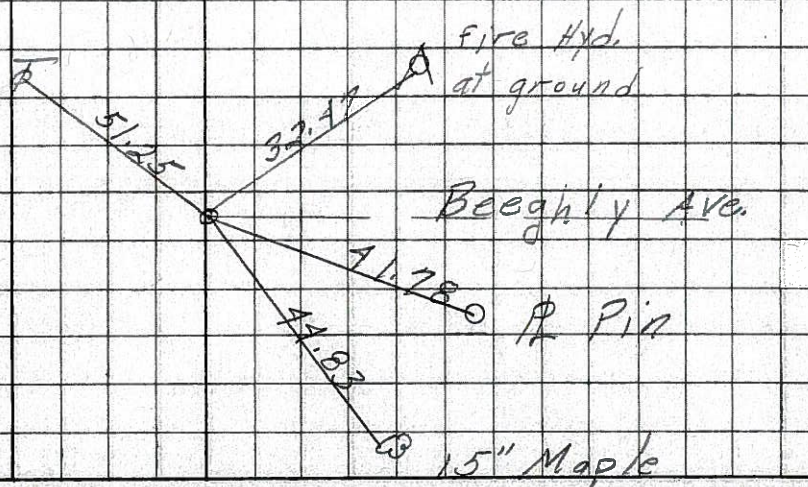


31-B

8232

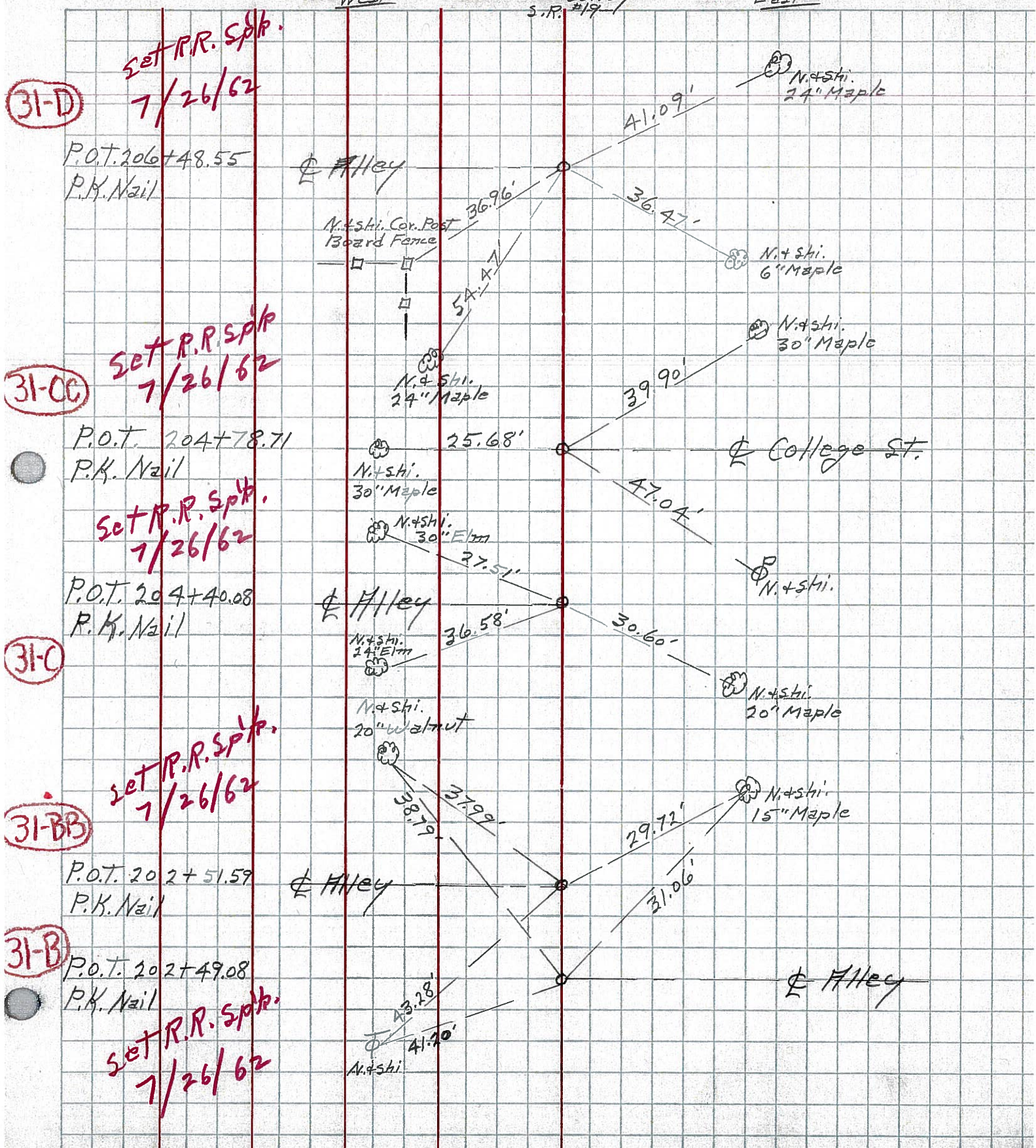
31-A

Fd. R. R. spk.



8231

PERSONNEL TITLE PERSONNEL TITLE COUNTY Seneca DATE Apr. '62  
 #19 Bloomville WEATHER Clear  
 SEC Sen-19(3.56-4.41) TEMP 60°  
 DESCRIPTION Control Point & Inter. ties JOB NO. Const.





PERSONNEL TITLE PERSONNEL TITLE

HASH  
4  
CRAW

COUNTY Semora DATE Apr. '62

S. R. 19 Bloomville WEATHER Clear

SEC. Sec. 19 (3.516-4.41) TEMP. 60°

DESCRIPTION Control Point + ~~Inter~~ Ties JOB NO. Cont.

LEFT West CENTER LINE - Survey S.R. #19 RIGHT East

31-D

P.O.T. 206+48.55  
P.K. Nail

Alley

N. + Shi. Corn Post  
Board Fence

30.96'

41.09'

36.47'

N. + Shi.  
24" Maple

31-CC

P.O.T. 204+78.71  
P.K. Nail

N. + Shi.  
30" Maple

25.68'

39.90'

N. + Shi.  
6" Maple

N. + Shi.  
30" Maple

College St.

31-C

P.O.T. 204+40.08  
P.K. Nail

Alley

N. + Shi.  
24" Elm

27.51'

47.04'

N. + Shi.

N. + Shi.  
20" Walnut

36.58'

30.60'

N. + Shi.  
20" Maple

31-BB

P.O.T. 202+51.59  
P.K. Nail

Alley

38.79'

37.99'

29.72'

N. + Shi.  
15" Maple

31.06'

31-B

P.O.T. 202+49.08  
P.K. Nail

Alley

43.28'

41.90'

Alley