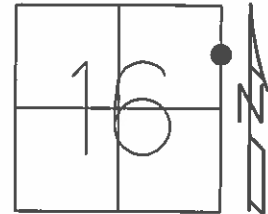


O.D.O.T. DISTRICT 2 SURVEY OFFICE (USE ONLY)

PERSONNEL	REFERENCE NO.	31 C	SHEET	38	OF	64
NOTES	RHOADES	DATE	8-20-15	ROUTE	SR 19	
H.C.	O'DONNELL	WEATHER	SUNNY	COUNTY	SENECA	
R.C.	RHOADES	TEMP.	64°F	TOWNSHIP	BLOOM	
				SECTION	16	
				T	1	R
					16	E

TYPE MONUMENT PK. SHANK
~~ON SURFACE~~ - BELOW 1"
~~LEFT~~ - ☉ PAV'T - ~~RIGHT~~ ON
 20.2' RT TO RT. EDGE PAVEMENT
 S.L.M. 204+56.18
 Grid: Northing: 504160.5293 Easting: 1826357.6374



RECORD STA. 204+40.08
 PK./WASHER
 ATOP MINE SPK
 10-08-85

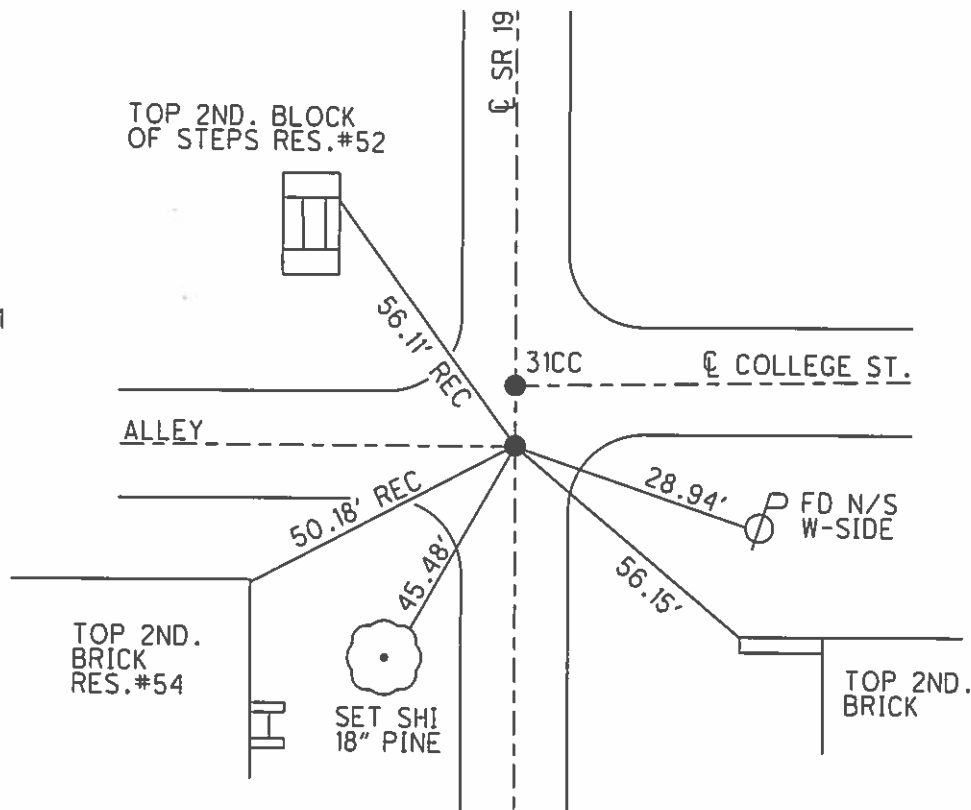
NOTE: 38.66' BETWEEN POINTS

SET PK/WASHER
 09-28-92, JLR

FD PK. SHANK
 GPS, REFC31
 01-14-13, EBW

GPS, REFC31
 8-20-15

SET MAG/W
 GPS, NEWREFC31
 7-21-16, JFO



O.D.O.T. DISTRICT 2 SURVEY OFFICE (USE ONLY)

PERSONNEL _____

REFERENCE NO. 31C

SHEET 38 OF 62

NOTES CANTERBURY

DATE 04-20-06

ROUTE SR 19

H.C. MICKLOVICK

WEATHER SUNNY

COUNTY SENECA

R.C. HANKE

TEMP. +62°

TOWNSHIP BLOOM

SECTION 16

T 1 N R 16 E

TYPE MONUMENT FD. SHANK

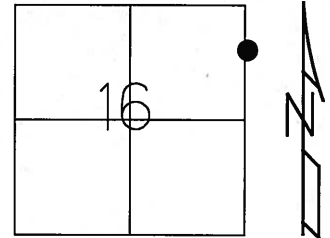
ON SURFACE - ~~BELOW~~ ON SURFACE

~~LEFT~~ - CL PAV'T - ~~RIGHT~~ ON CL SR#19 (ON CL WEST)

20.2' RT TO RT. EDGE OF CURB

S.L.M. 204+30 (SV38)

Grid: Northing: _____ Easting: _____



RECORD STA. 204+40.08
PK./WASHER
ATOP MINE SPK
10-08-85

SET PK/WASHER
09-28-92 JLR

NOTE: 38.64' BETWEEN POINTS

TOP 2ND. BLOCK
OF STEPS RES.#52



56.08'

FD. PK/WASHER

SR 19

CL PAVT

COLLEGE ST.

CL PAVT

ALLEY

50.18'

TOP 2ND. BRICK
RES. #54



CL PAVT

28.90'
REC



FD. N/S
W-SIDE

56.15'

TOP 2ND. BRICK
BRICK BLDG.

O.D.O.T. DISTRICT 2 SURVEY OFFICE

PERSONNEL

REFERENCE NO. 31-C

SHEET 35 OF 53

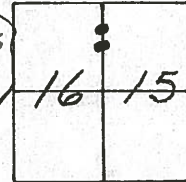
NOTES Cheney
 H.C. Ripplé
 R.C. BARBOUR
Geyman

DATE 6-22-1992
 WEATHER Sunny
 TEMP. 70°

ROUTE #19
 COUNTY Seneca
 TOWNSHIP Bloom
 SECTION 15 & 16
 T. 1 N. R 16 E

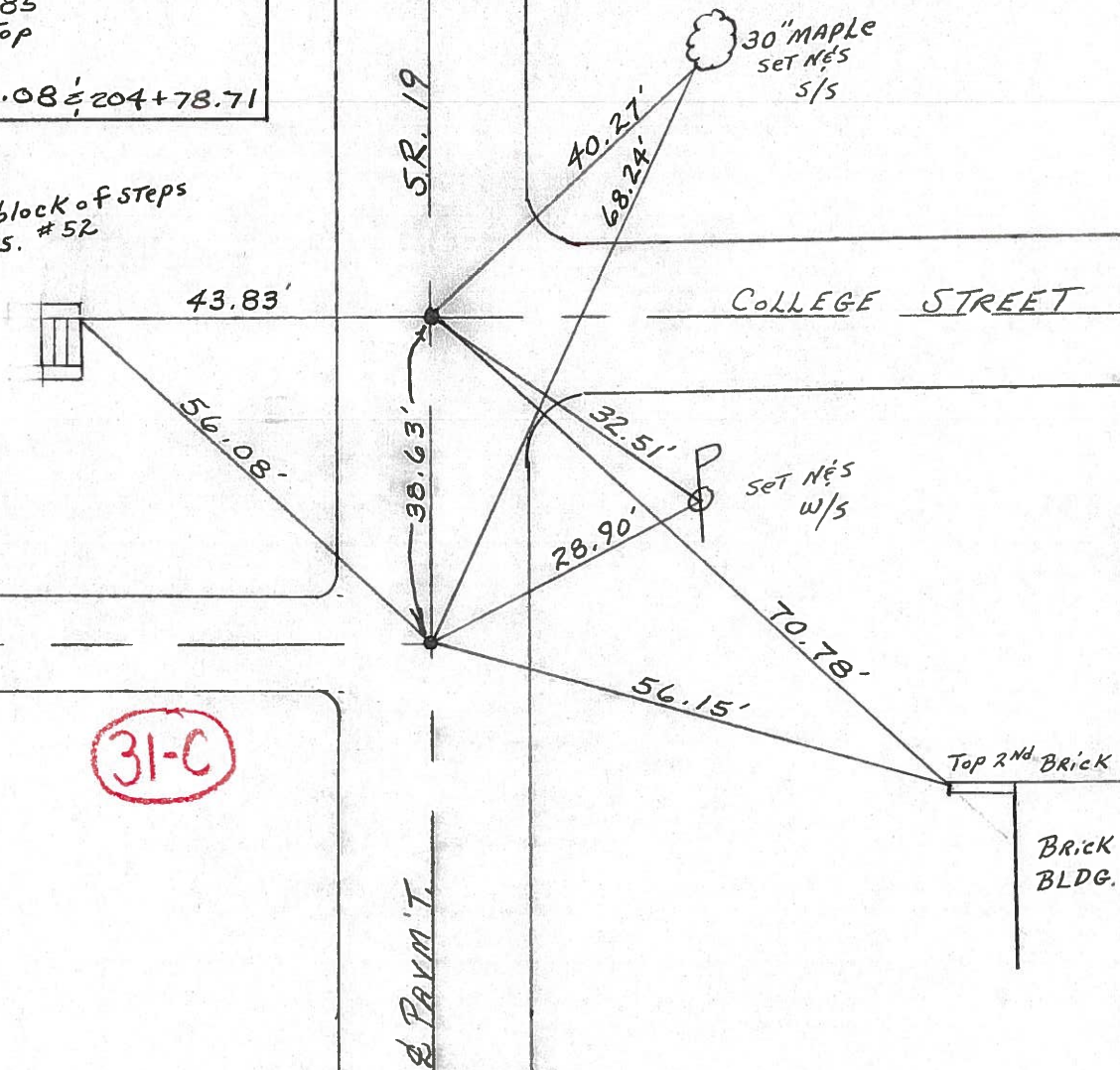
TYPE MONUMENT P.K. & Washers
 ON SURFACE - ~~BELOW~~ yes
~~LEFT - C. PAV'T. - RIGHT~~ yes
10' TO RT. EDGE PAVEMENT
 S.L.M. POT. 204+32.1 POT. 204+70.1

SET PK/WASHERS
 9-28-1992
 J.L.E



Record: 10-08-85
 P.K.'s & washers at top
 mine spikes
 STA. 204+40.08 & 204+78.71

Top of 2nd block of steps
 to Res. #52



31-C

O.D.O.T. DISTRICT 2 SURVEY OFFICE

PERSONNEL

REFERENCE NO. _____

SHEET 35 OF _____

NOTES CRONIN YAC.

DATE 10/22/85

ROUTE #19

H.C. RIPPLE

WEATHER 50unny

COUNTY SENECA

R.C. BARBOUR

TEMP. 63°

TOWNSHIP Bloom

GEYMAN

SECTION 15E16

T 1 N R 16 E

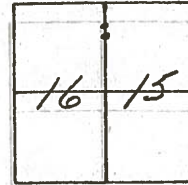
TYPE MONUMENT P.K. 5' WASHERS ATOP MINE SPIRES

ON SURFACE - BELOW AND SURFACE

LEFT - & PAV'T. - RIGHT & PAV'T.

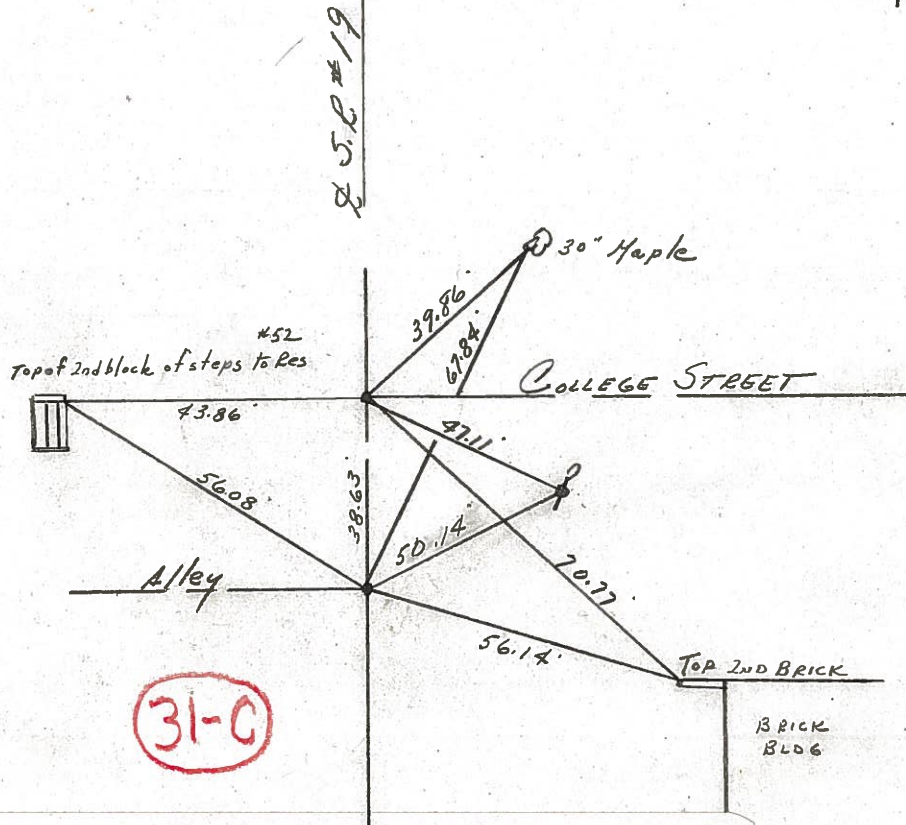
TO EDGE PAVEMENT

S.L.M. EDGE PAVEMENT



P.O.T.
204+78.71

P.O.T.
204+40.08



31-0

County SENECA S.R. 19

Date 7/18/79

Township BLOOM

Weather cloudy

Section Either 15 or 16

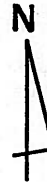
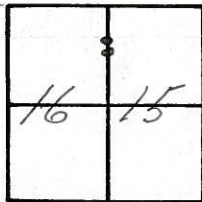
Temp. 69°

T1N, R16E

Personnel Cranin

Ripple

Geyman



34

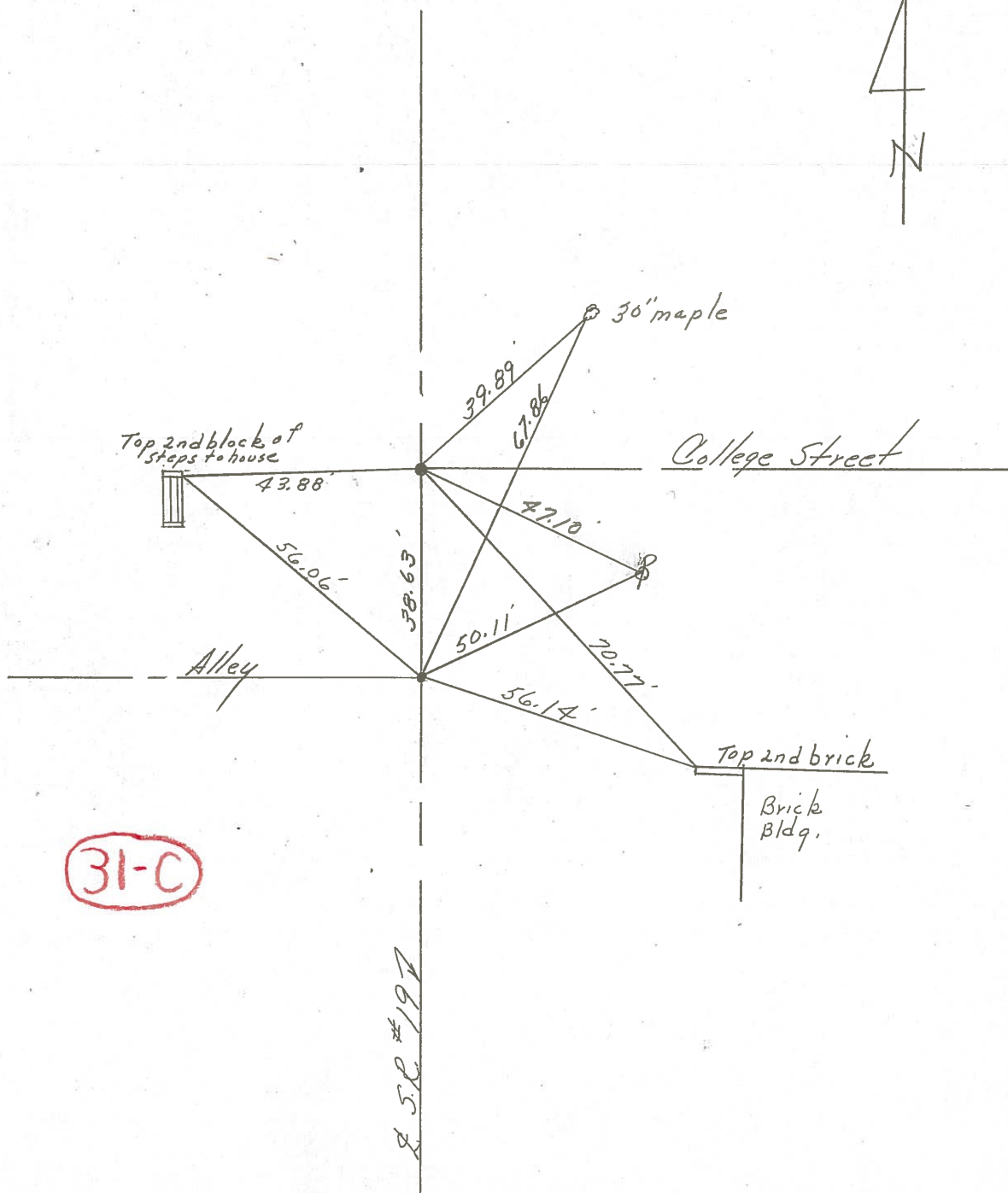


204+78.71

Ed. mine spike
on surface

204+40.08

Ed. mine spike
on surface



31-C

852 #197

PERSONNEL TITLE PERSONNEL TITLE

COUNTY Seneca

Ash

WEATHER cloudy

Cronin

S. R. #19

Ripple

SEC.

TEMP. 45°

Anderson

DESCRIPTION Ties for Control Points - Village of Bloomville

JOB NO.

LEFT

CENTER LINE

RIGHT

Did not make temp corrections



Bloom Twp.

Roll of Honor mon. base

Sec. 16
Sec. 15

31-D

206+48.55 S.L.M.

Fd. R.R. spk. on surface

Alley

53.31'

36.60'

top 1st block steps to house #55

62.94'

stoop



31-CC

204+78.71 S.L.M.

Fd. R.R. spk. on surface

top 2nd block steps to house

30' maple

39.89'

67.86'

College St.

43.89'

47.09'

204+40.08 S.L.M.

Fd. R.R. spk. on surface

Alley

50.10'

56.15'

top 2nd brick

Bloom Twp.

Brick Bldg

Sec. 16
Sec. 15

31-C

PERSONNEL TITLE PERSONNEL TITLE

17sh
+
Crew

COUNTY Seneca DATE Apr. '62

S. R. #19 Bloomville WEATHER Clear

SEC. Sen.-19(3.56-4.41) TEMP. 60°

DESCRIPTION Control Point & Inter. Ties JOB NO. Const.

LEFT West CENTER LINE - Survey S.R. #19 RIGHT East

31-D

Set R.R. Spk.
7/26/62

P.O.T. 206+48.55
P.K. Nail

Alley

N. + Shi. Cor. Post
Board Fence

36.96'

41.09'

N. + Shi.
24" Maple

36.47'

N. + Shi.
6" Maple

31-CC

Set R.R. Spk.
7/26/62

P.O.T. 204+78.71
P.K. Nail

N. + Shi.
30" Maple

25.68'

39.90'

N. + Shi.
30" Maple

College St.

47.04'

N. + Shi.
30" Elm

27.51'

N. + Shi.

31-C

Set R.R. Spk.
7/26/62

P.O.T. 204+40.08
P.K. Nail

Alley

N. + Shi.
24" Elm

36.58'

30.60'

N. + Shi.
20" Maple

31-BB

Set R.R. Spk.
7/26/62

P.O.T. 202+51.59
P.K. Nail

Alley

N. + Shi.
20" Walnut

37.99'

29.72'

N. + Shi.
15" Maple

38.79'

31.06'

31-B

Set R.R. Spk.
7/26/62

P.O.T. 202+49.08
P.K. Nail

Alley

N. + Shi.

43.28'

41.20'

Alley

PERSONNEL TITLE PERSONNEL TITLE COUNTY Seneca DATE Apr. '62
 #19 Bloomville WEATHER Clear
 #19 (3,56-441) TEMP. 60°
 DESCRIPTION Control Point & Inter. Ties JOB NO. Costast.
 LEFT West CENTER LINE - Survey S.P. #19 RIGHT East

31-D

P.O.T. 206+48.55
P.K. Nail

Alley

N+shi. Cor. Post
Board Fence

N+shi.
24" Maple

N+shi.
24" Maple

N+shi.
6" Maple

N+shi.
30" Maple

31-CC

P.O.T. 204+78.71
P.K. Nail

N+shi.
30" Maple

N+shi.
30" Elm

College St.

31-C

P.O.T. 204+40.08
P.K. Nail

Alley

N+shi.
24" Elm

N+shi.
20" Walnut

N+shi.
20" Maple

31-BB

P.O.T. 202+51.59
P.K. Nail

Alley

N+shi.
15" Maple

31-B

P.O.T. 202+49.08
P.K. Nail

N+shi.
41.90'

Alley

