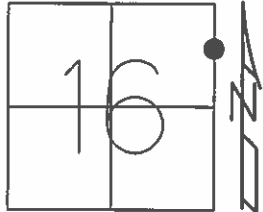


O.D.O.T. DISTRICT 2 SURVEY OFFICE (USE ONLY)

PERSONNEL \_\_\_\_\_ REFERENCE NO. 31 CC SHEET 39 OF 64  
 NOTES RHOADES DATE 8-20-15 ROUTE SR 19  
 H.C. O'DONNELL WEATHER SUNNY COUNTY SENECA  
 R.C. RHOADES TEMP. 64°F TOWNSHIP BLOOM  
 \_\_\_\_\_ SECTION 16  
 \_\_\_\_\_ T 1 N R 16 E

TYPE MONUMENT MINE SPIKE  
~~ON SURFACE~~ - BELOW 4"  
~~LEFT~~ - CL PAV'T - ~~RIGHT~~ ON, (ON CL EAST)  
20.2' RT TO RT. EDGE PAVEMENT  
S.L.M. 204+94.93  
 Grid: Northing: 504199.1846 Easting: 1826358.1188



RECORD STA. 204+78.71  
 PK./WASHER  
 ATOP MINE SPK  
 10-08-85

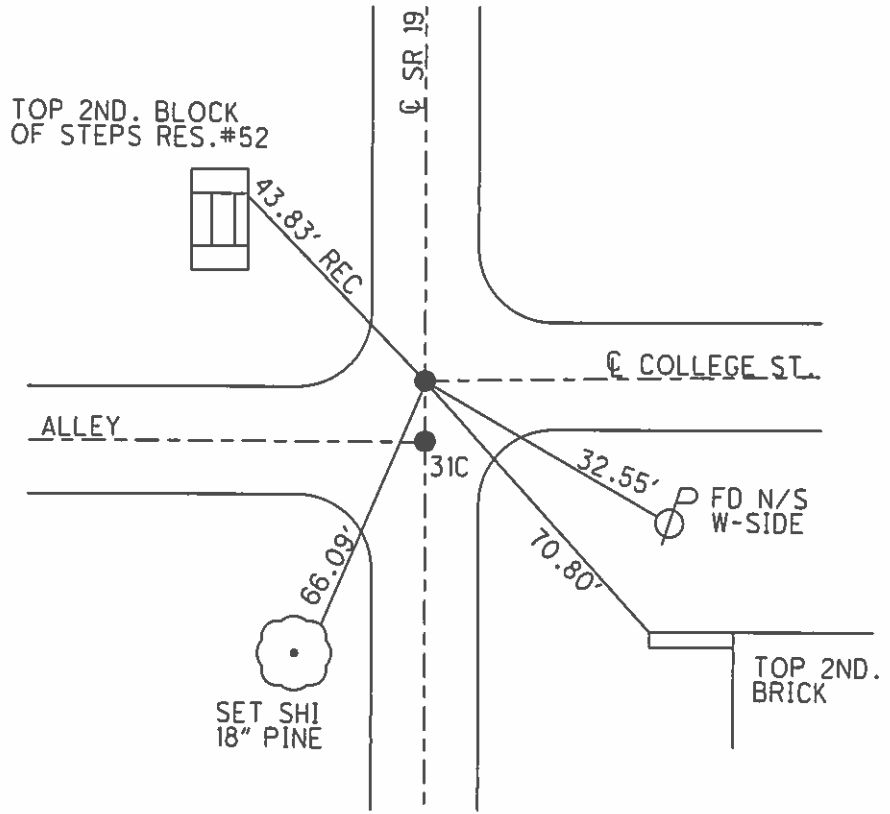
NOTE: 38.66' BETWEEN POINTS

SET PK/WASHER  
 09-28-92, JLR

FD PK. SHANK  
 GPS, REFCC31  
 01-14-13, EBW

GPS, REFCC31  
 8-20-15

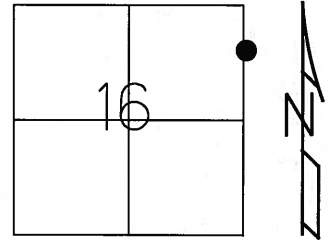
SET MAG/W  
 GPS, NEWREFCC31  
 7-21-16, JFO



O.D.O.T. DISTRICT 2 SURVEY OFFICE (USE ONLY)

PERSONNEL \_\_\_\_\_ REFERENCE NO. 31CC SHEET 39 OF 62  
 NOTES CANTERBURY DATE 04-20-06 ROUTE SR 19  
 H.C. MICKLOVICK WEATHER SUNNY COUNTY SENECA  
 R.C. HANKE TEMP. +62° TOWNSHIP BLOOM  
 \_\_\_\_\_ SECTION 16  
 \_\_\_\_\_ T 1 N R 16 E

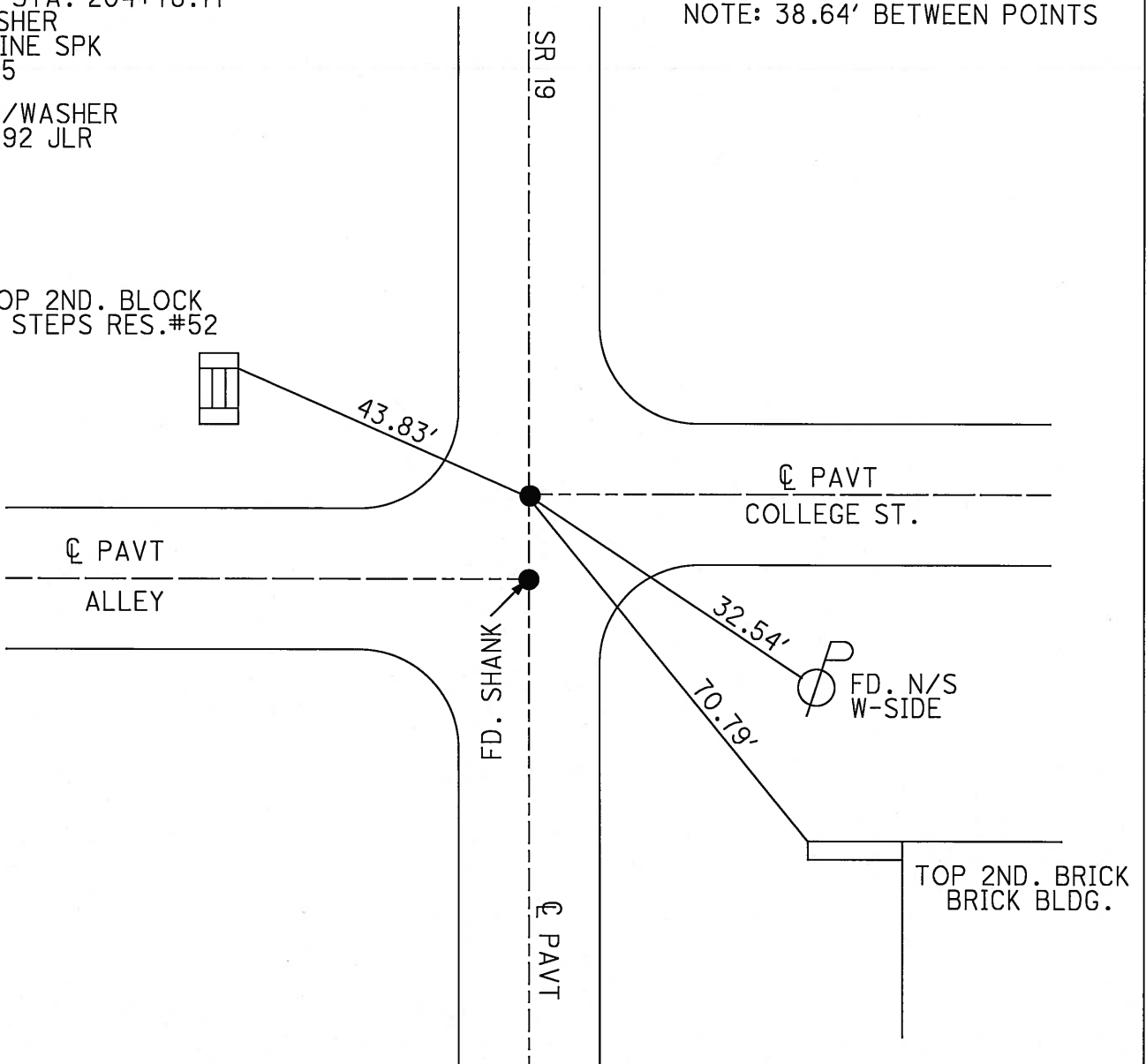
TYPE MONUMENT FD. PK/WASHER  
 ON ~~SURFACE~~ - BELOW 2" DOWN  
~~LEFT~~ - C PAV'T - ~~RIGHT~~ ON CL SR#19 (ON CL EAST)  
20.2' RT TO RT. EDGE OF CURB  
 S.L.M. 204+68 (SV39)  
 Grid: Northing: \_\_\_\_\_ Easting: \_\_\_\_\_



RECORD STA. 204+78.71  
 PK./WASHER  
 ATOP MINE SPK  
 10-08-85  
 SET PK/WASHER  
 09-28-92 JLR

NOTE: 38.64' BETWEEN POINTS

TOP 2ND. BLOCK  
 OF STEPS RES.#52



# O.D.O.T. DISTRICT 2 SURVEY OFFICE

PERSONNEL

REFERENCE NO. 31-C

SHEET 35 OF 53

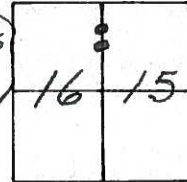
NOTES Cheney  
 H.C. Ripplie  
 R.C. BARBOUR  
Geyman

DATE 6-22-1992  
 WEATHER Sunny  
 TEMP. 70°

ROUTE #19  
 COUNTY Seneca  
 TOWNSHIP Bloom  
 SECTION 15 & 16  
 T. L. N. R. 16 E

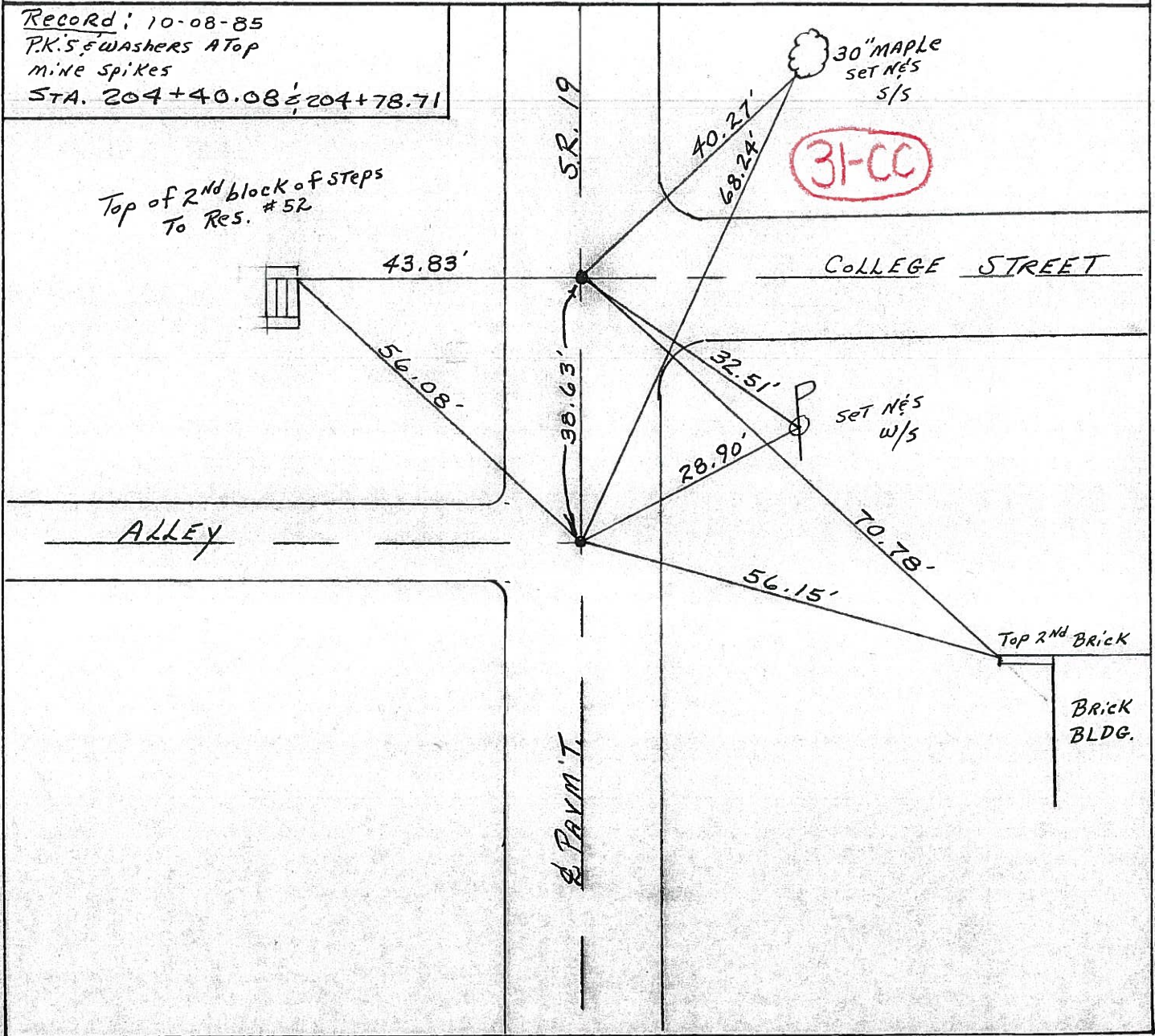
TYPE MONUMENT P.K. & Washers  
 ON SURFACE - ~~BELOW~~ yes  
~~LEFT- & PAV'T. - RIGHT~~ yes  
10' TO RT. EDGE PAVEMENT  
 S.L.M. POT. 204+32.5 POT. 204+70.5

SET PK/WASHERS  
 9-28-1992  
 J.L.E.



Record: 10-08-85  
 P.K.'s & washers atop  
 mine spikes  
 STA. 204+40.08 & 204+78.71

Top of 2nd block of steps  
 to Res. #52



31-CC



# O.D.O.T. DISTRICT 2 SURVEY OFFICE

PERSONNEL

REFERENCE NO. \_\_\_\_\_

SHEET 35 OF \_\_\_\_\_

NOTES CRONIN Vac.

REFERENCE NO. DRAWN 10/22/85

SHEET \_\_\_\_\_ OF \_\_\_\_\_

H.C. RIPPLE

DATE 10/8/85

ROUTE #19

R.C. BARBOUR

WEATHER SONNY

COUNTY SENECA

GEYMAN

TEMP. 63°

TOWNSHIP BLOOM

SECTION 15 E 16

T 1 N R 16 E

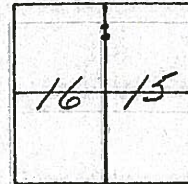
TYPE MONUMENT P.K. 5 & WASHERS ATOP MINE SPIRES

ON SURFACE - BELOW AND SURFACE

LEFT- & PAV'T. - RIGHT & PAVT.

TO EDGE PAVEMENT

S.L.M. \_\_\_\_\_



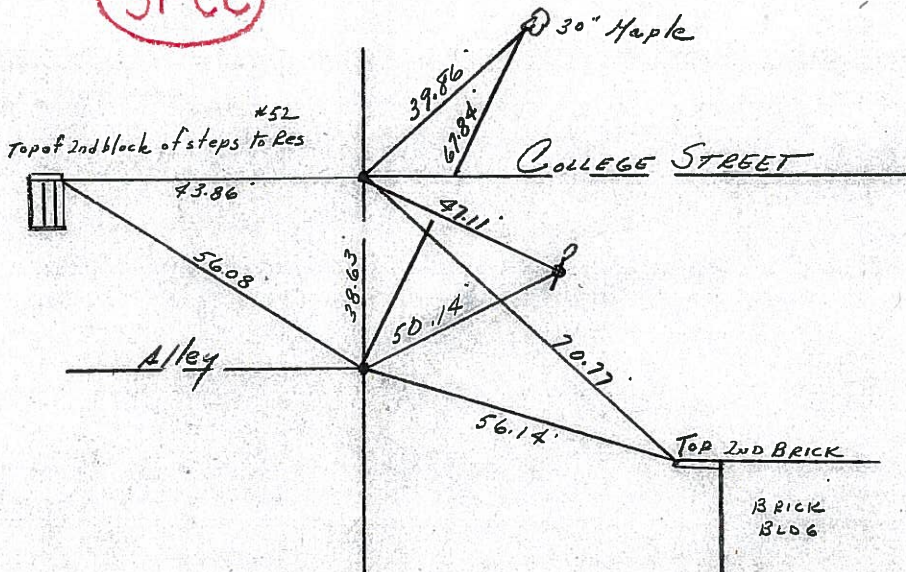
31-CC

S.L.M. #19



P.O.T  
204+78.71

P.O.T  
204+40.08





County SENECA S.R. 19

Date 7/18/79

Township BLOOM

Weather cloudy

Section Either 15 or 16

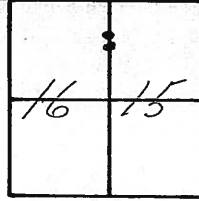
Temp. 69°

T1N, R16E

Personnel Cronin

Ripple

Geyman

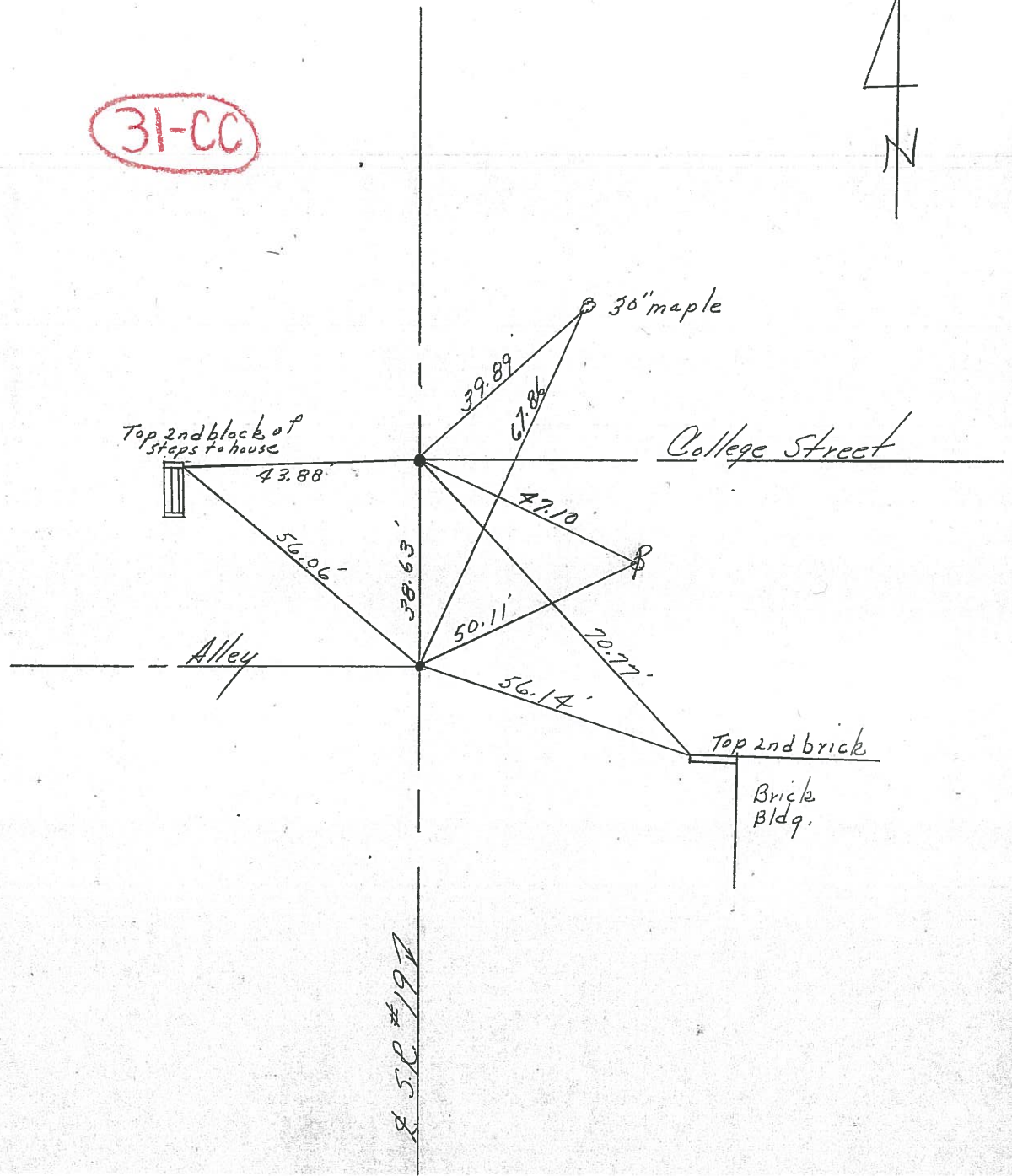


31-CC



04+78.71  
d. mine spike  
on surface

04+40.08  
d. mine spike  
on surface



250 #197



PERSONNEL TITLE PERSONNEL TITLE

Ash  
Cronin  
Ripple  
Anderson

COUNTY Seneca

S. R. #19

WEATHER cloudy

SEC.

TEMP 45°

DESCRIPTION Ties for Control Points - Village of Bloomville

JOB NO.

LEFT

CENTER LINE

RIGHT

Did not make temp corrections



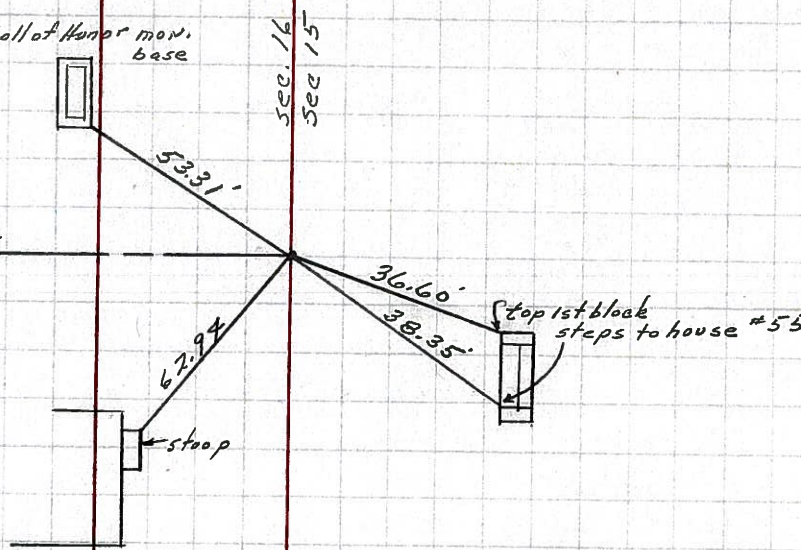
31-D

206+48.55 S.L.M.  
Fd. R.R. spk. on surface

Bloom Twp.

Roll of Honor mon. base

Alley



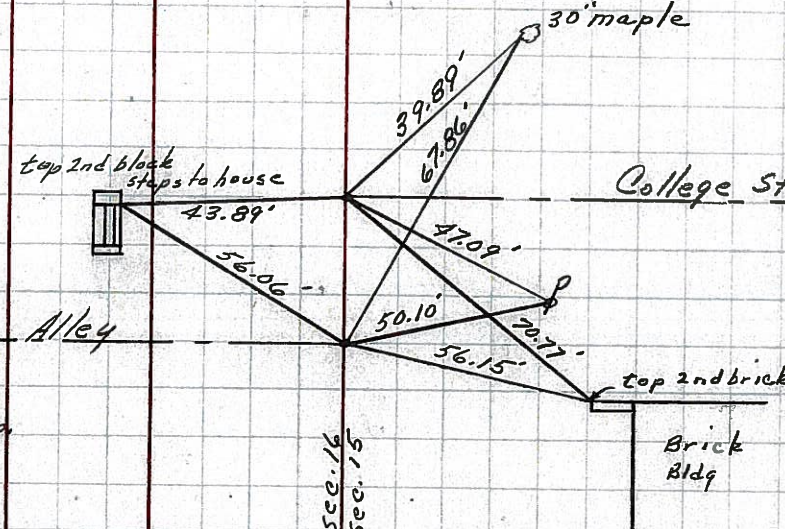
31-CC

204+78.91 S.L.M.  
Fd. R.R. spk. on surface

top 2nd block steps to house

College St.

Alley



31-O

204+40.08 S.L.M.  
Fd. R.R. spk. on surface

Bloom Twp.

Brick Bldg

Sec. 16  
Sec. 15

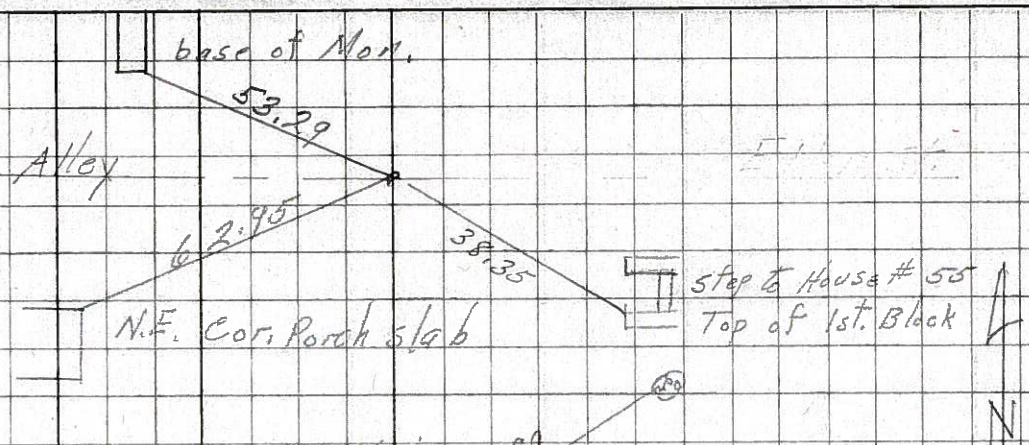


PERSONNEL	TITLE	PERSONNEL	TITLE	COUNTY	DATE
Schneider				Seneca	7-28-69
Mosser				S. R. 19	WEATHER Fair
Barbour				SEC. 40 line to Bloomville	TEMP. 75°
Potts					

DESCRIPTION Ties for Control Points JOB NO. \_\_\_\_\_

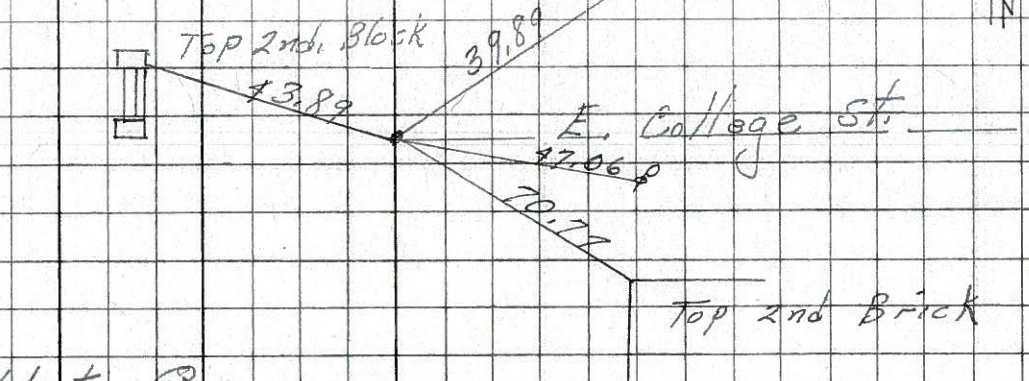
31-D

Fd. R.R. spk.  
8234



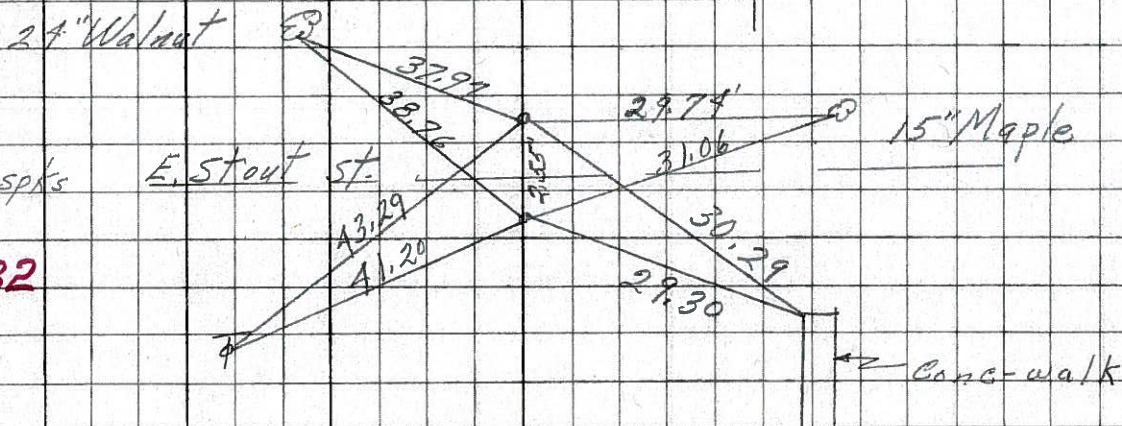
31-CC

Fd. R.R. spk.  
8233



31-BB

Fd. 2-R.R. spks

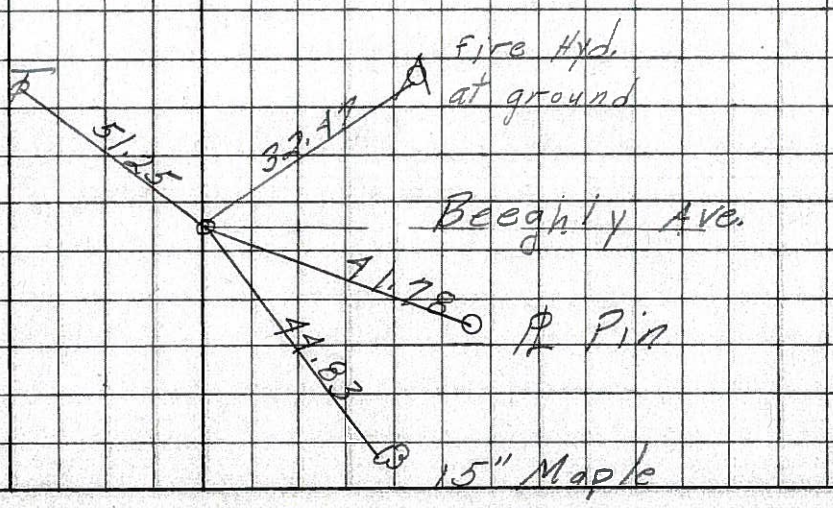


31-B

8232

31-A

Fd. R.R. spk.

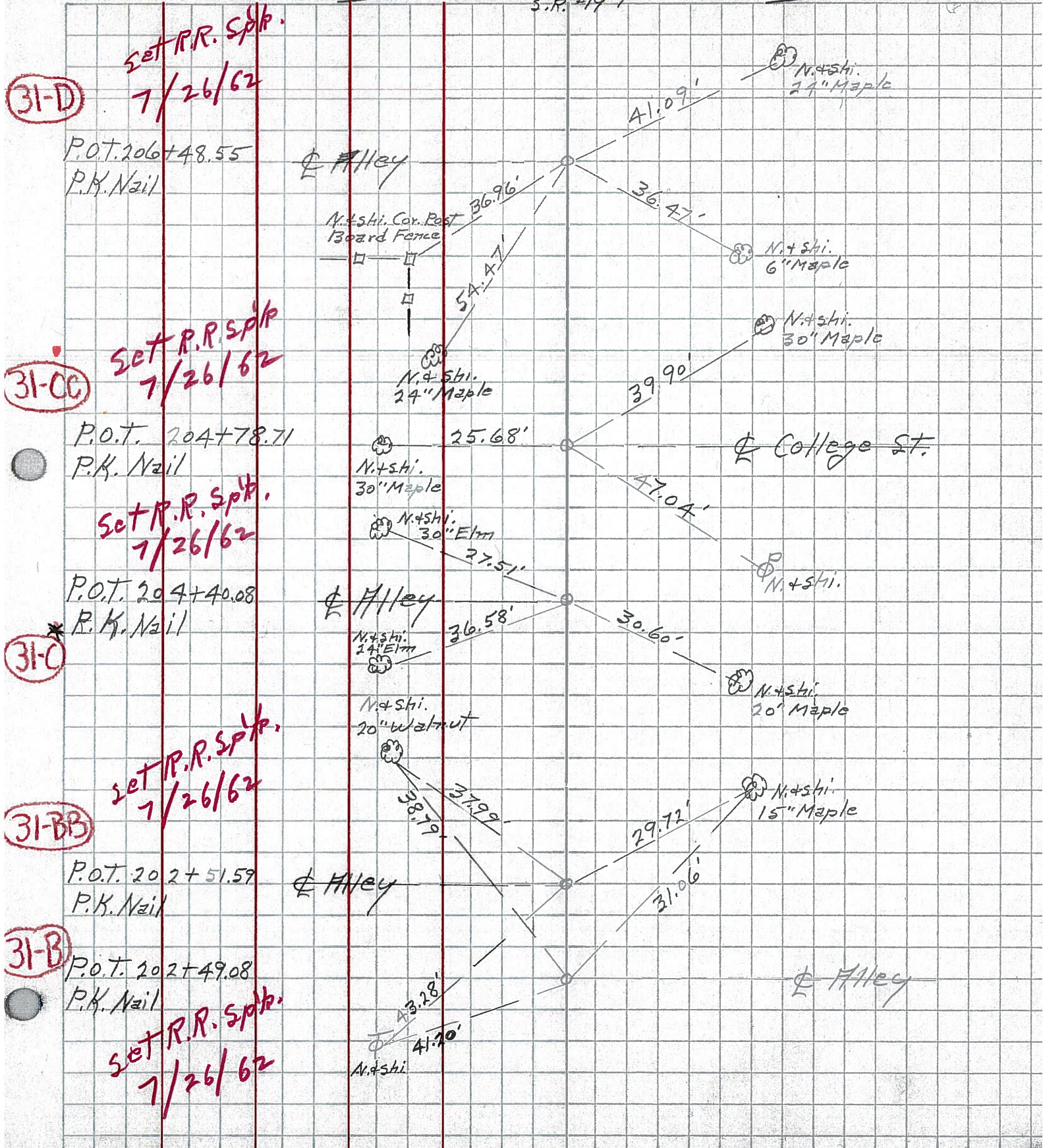


8231



PERSONNEL TITLE PERSONNEL TITLE COUNTY Seneca DATE Apr. '62  
 #19 Blottnville WEATHER Clear  
 #19 (3.56-4.41) TEMP 60°

DESCRIPTION Control Point & Inter. ties JOB NO. Const.  
 LEFT West CENTER LINE - Survey S.R. #19 RIGHT East





PERSONNEL TITLE PERSONNEL TITLE

Fish  
+  
Craw

COUNTY Semora DATE Apr. '62

S. R. #19 Bloomville WEATHER Clear

SEC. Sem-19(3,56-4A1) TEMP. 60°

DESCRIPTION Control Point + Inter. Ties JOB NO. Contst.

LEFT West CENTER LINE - Survey S.P. #19 RIGHT East

31-D

P.O.T. 206+48.55  
P.K. Nail

Alley

N. + Shi. Cor. Post  
Board Fence

36.96'

41.09'

N. + Shi.  
24" Maple

36.47'

N. + Shi.  
6" Maple

N. + Shi.  
30" Maple

31-CC

P.O.T. 204+78.71  
P.K. Nail

Alley

N. + Shi.  
30" Maple

25.68'

39.90'

College St.

47.04'

N. + Shi.  
30" Elm

27.51'

N. + Shi.

31-C

P.O.T. 204+40.08  
P.K. Nail

Alley

N. + Shi.  
24" Elm

36.58'

30.60'

N. + Shi.  
20" Maple

N. + Shi.  
20" Walnut

31-BB

P.O.T. 202+51.59  
P.K. Nail

Alley

38.79'

29.72'

N. + Shi.  
15" Maple

37.99'

31.06'

P.O.T. 202+49.08  
P.K. Nail

Alley

43.28'

41.40'

N. + Shi.

31-B