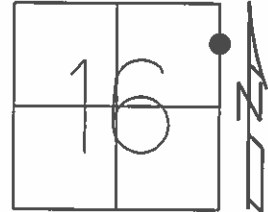


O.D.O.T. DISTRICT 2 SURVEY OFFICE (USE ONLY)

PERSONNEL _____ REFERENCE NO. 31 D SHEET 40 OF 64
 NOTES RHOADES DATE 8-20-15 ROUTE SR 19
 H.C. O'DONNELL WEATHER SUNNY COUNTY SENECA
 R.C. RHOADES TEMP. 64°F TOWNSHIP BLOOM
 _____ SECTION 16
 _____ T 1 N R 16 E

TYPE MONUMENT PK/WASHER
~~ON SURFACE~~ - BELOW 2"
~~LEFT~~ - CL PAV'T - RIGHT 0.5'
20. RT TO RT. EDGE PAVEMENT
 S.L.M. 206+64.75



Grid: Northing: 504369.0316 Easting: 1826360.2092

RECORD STA. 206+48.55
 PK./WASHER
 ATOP MINE SPIKE
 10-08-85

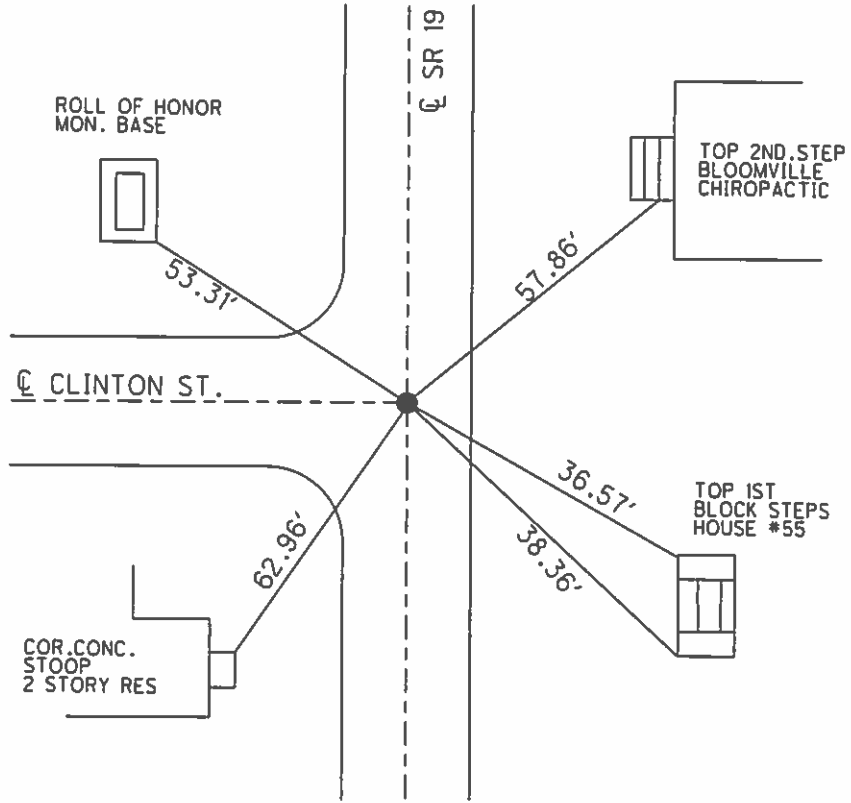
SET PK/WASHER
 09-28-92, JLR

FD PK/WASHER
 12-5-13, JMR

FD PK/W
 0.15' BELOW
 GPS, REFD31
 01-14-13, EBW

GPS, REFD31
 8-20-15

SET MAG/W
 GPS, NEWREFD31
 7-21-16, JFO



O.D.O.T. DISTRICT 2 SURVEY OFFICE (USE ONLY)

PERSONNEL _____

REFERENCE NO. 31D

SHEET 40 OF 62

NOTES CANTERBURY

DATE 04-20-06

ROUTE SR 19

H.C. MICKLOVICK

WEATHER SUNNY

COUNTY SENECA

R.C. HANKE

TEMP. +62°

TOWNSHIP BLOOM

SECTION 16

T 1 N R 16 E

TYPE MONUMENT FD. PK/WASHER

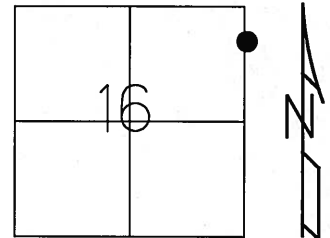
~~ON SURFACE~~ - BELOW 2" DOWN

~~LEFT - C PAV'T~~ - RIGHT 0.5' RT.

20.' RT TO RT. EDGE OF CURB

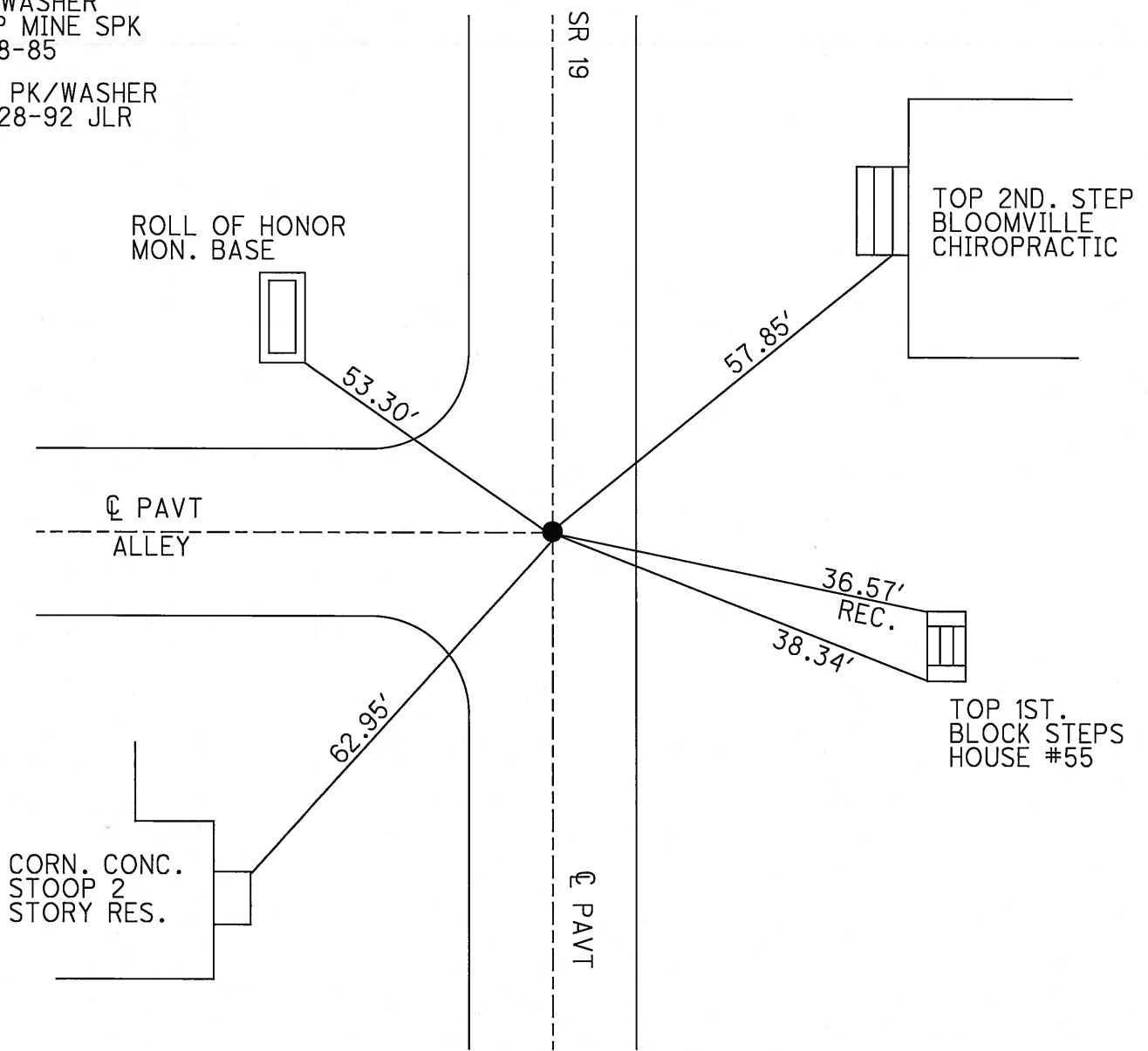
S.L.M. 206+40 (SV40)

Grid: Northing: _____ Easting: _____



RECORD STA. 206+48.55
PK./WASHER
ATOP MINE SPK
10-08-85

SET PK/WASHER
09-28-92 JLR



O.D.O.T. DISTRICT 2 SURVEY OFFICE

PERSONNEL

REFERENCE NO. 31-D

SHEET 36 OF 53

NOTES Cheney

H.C. RIPPLE

R.C. BARBOUR

Geyman

DATE 6-22-1992

WEATHER SUNNY

TEMP. 70°

ROUTE #19

COUNTY Seneca

TOWNSHIP Bloom

SECTION 15 & 16

T. 1 N. R 16 E

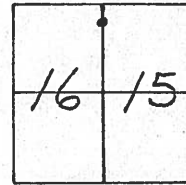
TYPE MONUMENT P.K. & Washer

ON SURFACE - ~~BELOW~~ yes

~~LEFT - C~~ PAV'T. - ~~RIGHT~~ yes

10' TO RT. EDGE PAVEMENT

S.L.M. 206+40



RECORD: 10/8/85
PK/WASHER ATOP MINE SPEC.
STA. 206+48.55

Roll of Honor Mon. Base



53.28'

ALLEY

SET PK/WASHER
9-28-1992
J.L.R.

36.57'

38.36'



Top of 1st block
Steps To house #55

2 STORY
Res.

CoR. of CONC.
STOOP

62.96'

E PAVM'T

S.R. 19'

O.D.O.T. DISTRICT 2 SURVEY OFFICE

PERSONNEL _____

REFERENCE NO. _____

SHEET 36 OF _____

NOTES CROWN Vac.

REFERENCE NO. _____
DRAWN 10/22/85

ROUTE #19

H.C. RIFFLE

DATE 10/8/85

COUNTY SENECA

R.C. BARBOUR

WEATHER -

TOWNSHIP BLOOM

GEYMAN

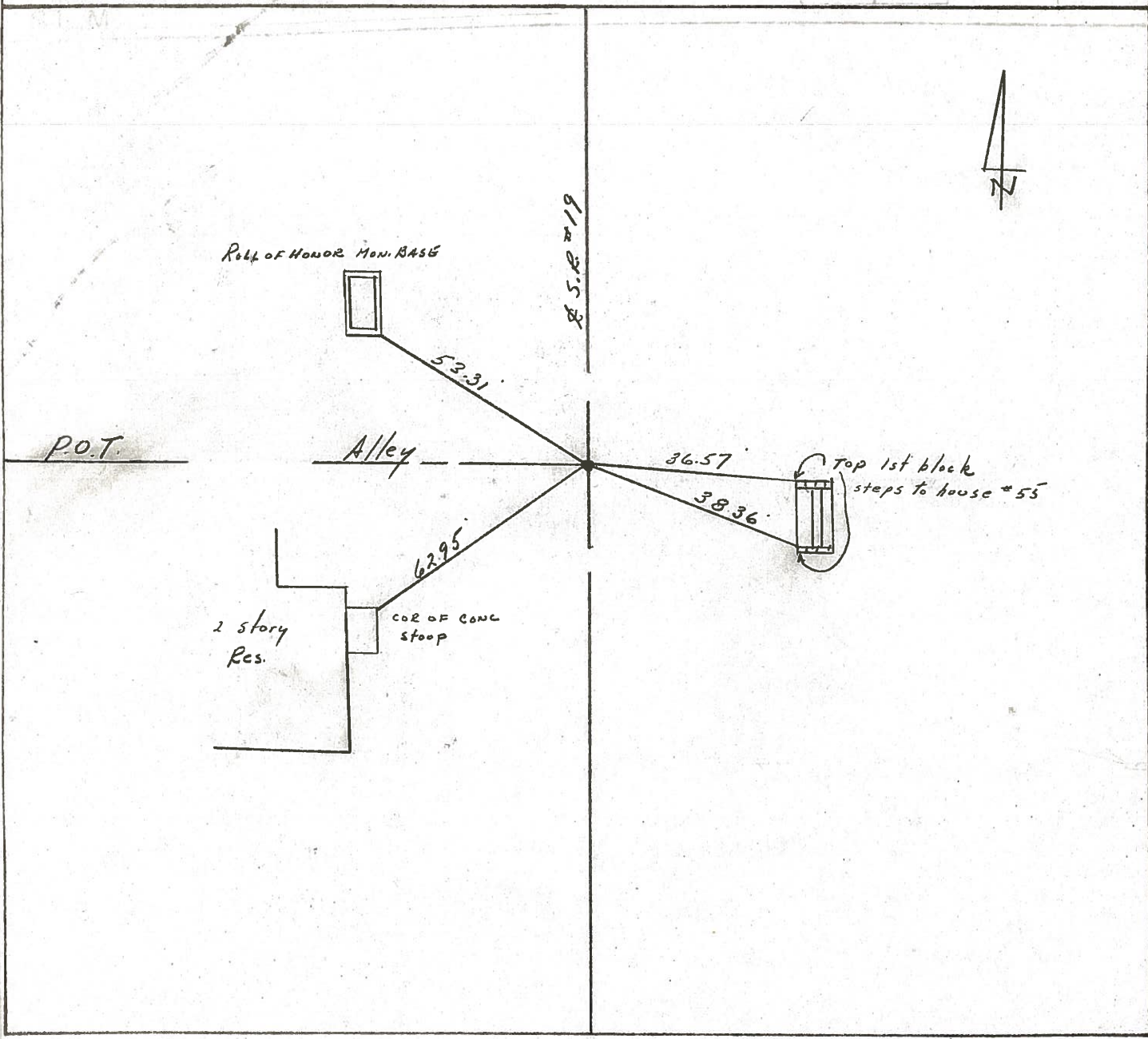
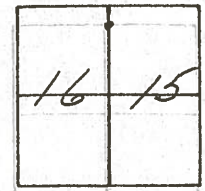
TEMP. _____

SECTION 15 & 16

T 1 N R 16 E

TYPE MONUMENT P.K. & WASHER ATOP MINE SPIKE
ON SURFACE - BELOW ON SURFACE
LEFT - & PAVT. - RIGHT & PAVT.
TO EDGE PAVEMENT
S.L.M. 206 + 48.55

31-D



County SENECA S.R. 19

Date 7/18/79

Township BLOOM

Weather cloudy

Section Either 15 or 16

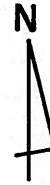
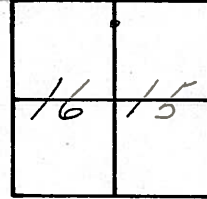
Temp. 69°

T1N, R16E

Personnel Cronin

Ripple

Geyman



31-D



Roll of Honor Mon. base



53.29'

Alley

36.58'

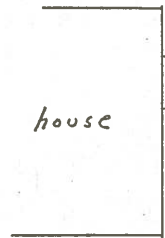
38.37'

Top 1st block steps to house #55



62.94'

house



206 + 48.55 S.L.M'

Ed. mine spike

on surface

S.S.R. #192

PERSONNEL TITLE PERSONNEL TITLE

Ash
Cronin
Ripple
Anderson

COUNTY Seneca

S. R. #19

WEATHER cloudy

SEC.

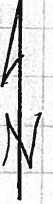
TEMP. 45°

DESCRIPTION Ties for Control Points - Village of Bloomville

JOB NO.

LEFT CENTER LINE RIGHT

Did not make temp corrections



31-D

206+48.55 S.L.M.
Fd. R.R. spike on surface

Bloom Twp.

Roll of Honor mon. base

Sec. 16
Sec. 15

Alley

53.31'

36.60'

38.35'

top 1st block steps to house #55

62.97'

stoop

31-CC

204+78.91 S.L.M.
Fd. R.R. spike on surface

top 2nd block steps to house

30" maple

College St.

39.89'

67.86'

43.89'

47.09'

204+40.88 S.L.M.
Fd. R.R. spike on surface

Alley

50.10'

20.77'

surface

Bloom Twp.

Sec. 16
Sec. 15

56.06'

56.15'

top 2nd brick

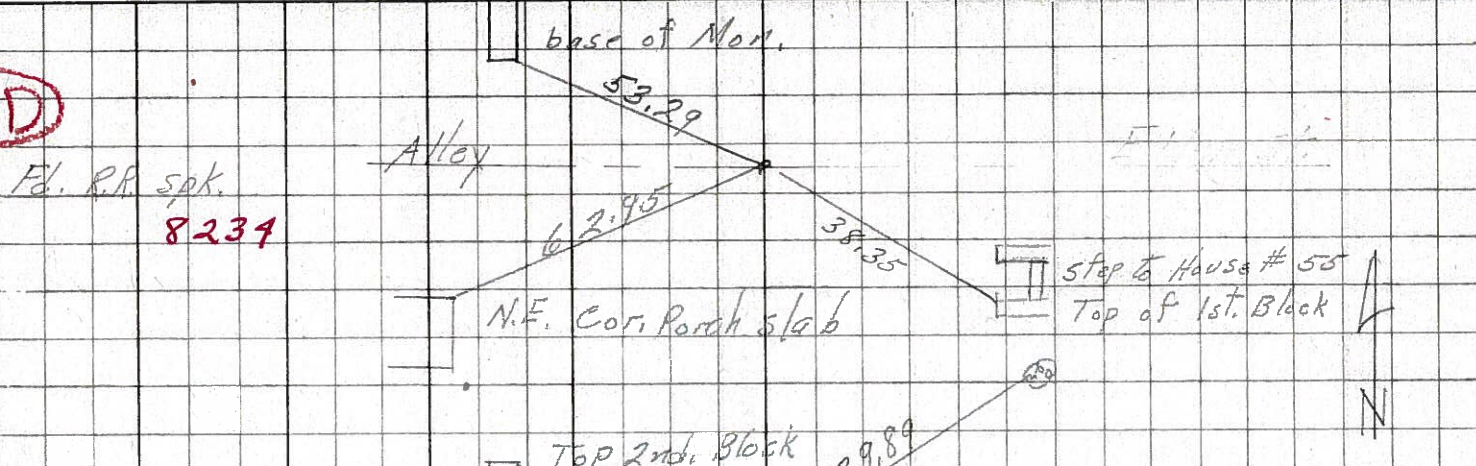
Brick Bldg

31-C

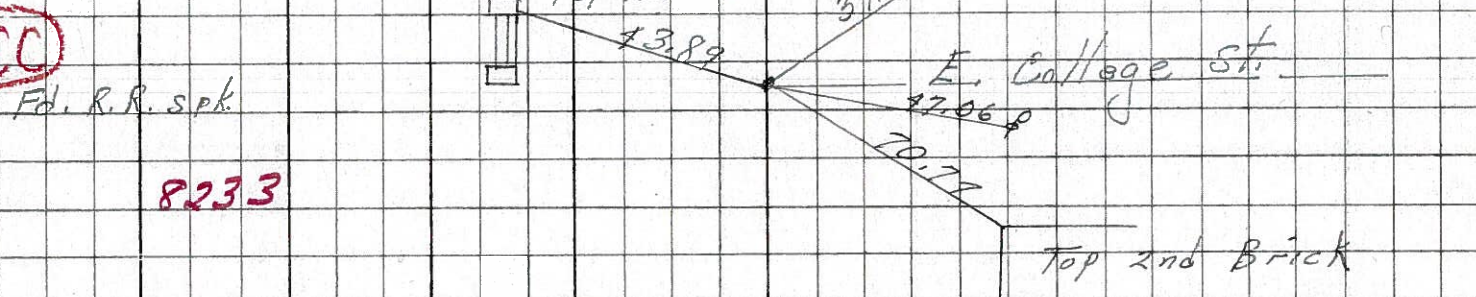
PERSONNEL	TITLE	PERSONNEL	TITLE	COUNTY	DATE
Schneider				Seneca	7-28-69
Mosser				S. R. 19	WEATHER Fair
Barbour				SEC. Co. Line to Bloomville	TEMP. 75°
Potts					

DESCRIPTION Ties for Control Points JOB NO. _____

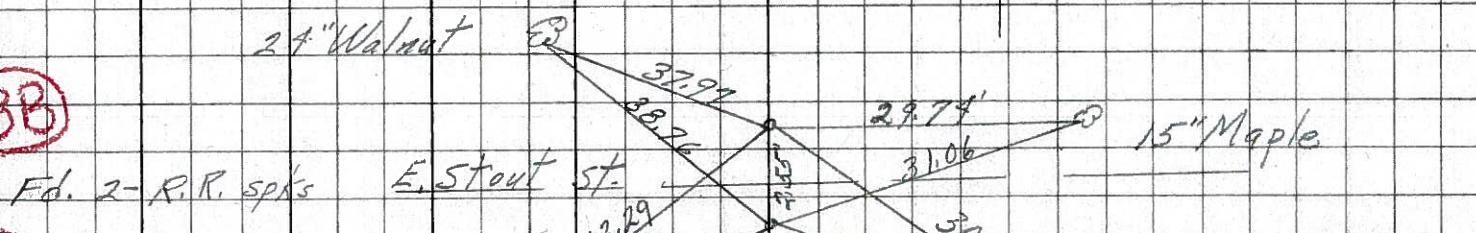
31-D



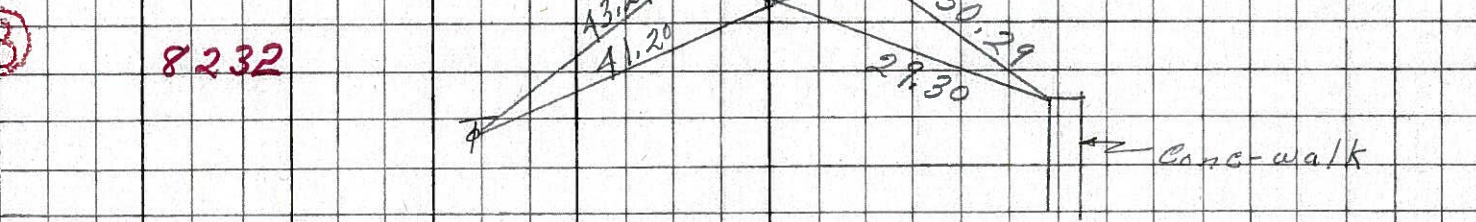
31-CC



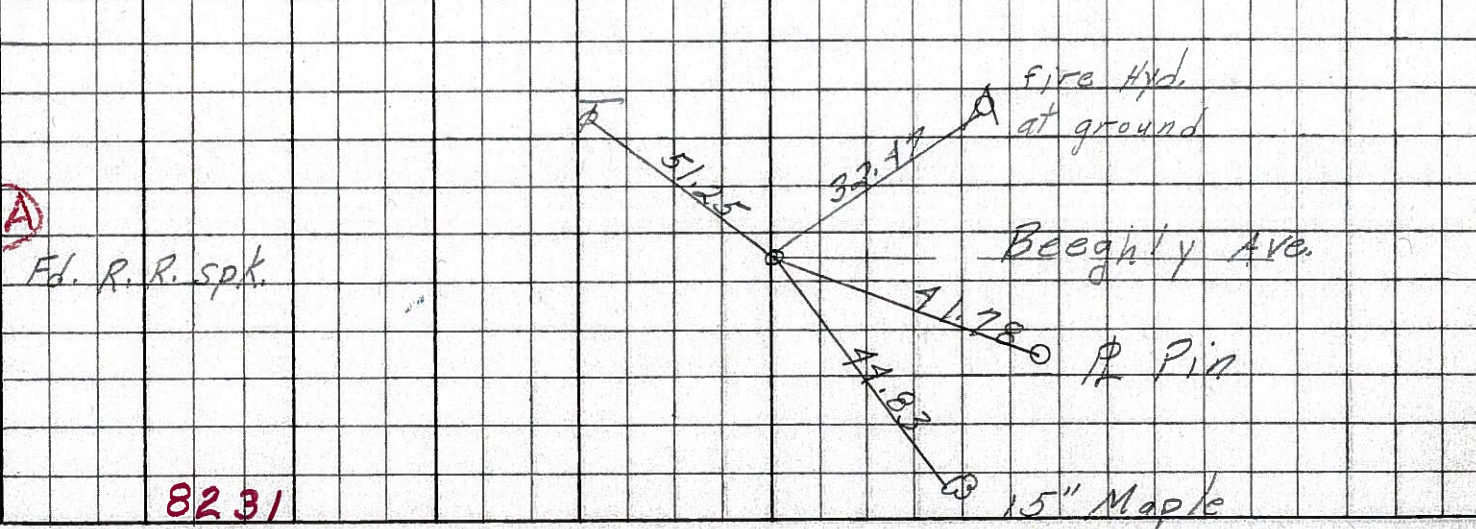
31-BB



31-B



31-A



PERSONNEL TITLE PERSONNEL TITLE

COUNTY Seneca DATE Apr. '62

S. R. #19 Bloomville WEATHER Clear

SEC. Sen.-19(3.56-4.41) TEMP. 60°

DESCRIPTION Control Point & Inter. Ties JOB NO. Const.

LEFT West CENTER LINE - Survey RIGHT East
S.R. #19

31-D

Set R.R. Spk.
7/26/62

P.O.T. 206+48.55
P.K. Nail

Alley

N. & Shi. Cor. Post
Board Fence

36.96'

41.09'

N. & Shi.
24" Maple

36.47'

N. & Shi.
6" Maple

31-CC

Set R.R. Spk.
7/26/62

P.O.T. 204+78.71
P.K. Nail

N. & Shi.
24" Maple

25.68'

39.90'

N. & Shi.
30" Maple

College St.

31-C

Set R.R. Spk.
7/26/62

P.O.T. 204+40.08
P.K. Nail

Alley

N. & Shi.
30" Elm

27.51'

47.04'

N. & Shi.

N. & Shi.
24" Elm

36.58'

30.60'

N. & Shi.
20" Maple

31-BB

Set R.R. Spk.
7/26/62

P.O.T. 202+51.59
P.K. Nail

Alley

N. & Shi.
20" Walnut

37.99'

29.72'

N. & Shi.
15" Maple

38.79'

31.06'

31-B

Set R.R. Spk.
7/26/62

P.O.T. 202+49.08
P.K. Nail

Alley

N. & Shi.

43.28'

41.70'

Alley

PERSONNEL TITLE PERSONNEL TITLE

COUNTY Semeco DATE Apr. '62

S. R. #19 Bloomville WEATHER Clear

SEC Sem-19(3.56-4.41) TEMP. 60°

DESCRIPTION Control Point + Inter ties JOB NO. Const.

LEFT West CENTER LINE S. R. #19 RIGHT East

31-D

P.O.T. 206+48.55
P.K. Nail

Alley

N.Y.Shi. Cor. Post
Board Fence

54.41'

N.Y.Shi.
24" Maple

25.68'

N.Y.Shi.
30" Maple

N.Y.Shi.
30" Elm

27.51'

Alley

N.Y.Shi.
24" Elm

36.58'

N.Y.Shi.
20" Walnut

38.79'

Alley

P.O.T. 202+51.59
P.K. Nail

P.O.T. 202+49.08
P.K. Nail

31-B

N.Y.Shi.
43.28'
41.90'

Alley

29.72'

31.06'

N.Y.Shi.
15" Maple

N.Y.Shi.
20" Maple

30.60'

N.Y.Shi.

47.04'

College St.

39.90'

N.Y.Shi.
30" Maple

N.Y.Shi.
6" Maple

36.47'

41.09'

N.Y.Shi.
24" Maple