

O.D.O.T. DISTRICT 2 SURVEY OFFICE (USE ONLY)

PERSONNEL _____ REFERENCE NO. 32 SHEET 41 OF 64
 NOTES RHOADES DATE 08-20-15 ROUTE SR 19
 H.C. O'DONNELL WEATHER SUNNY COUNTY SENECA
 R.C. RHOADES TEMP. 64°F TOWNSHIP BLOOM
 _____ SECTION 16
 _____ T 1 N R 16 E

TYPE MONUMENT R.R.SPIKE

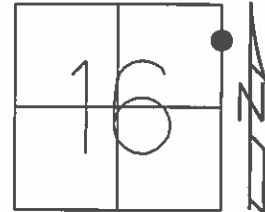
~~ON SURFACE~~ - BELOW 4"

LEFT - ☉ PAV'T - ~~RIGHT~~ ON, (ON CL WEST)

10' TO RT EDGE PAVEMENT

S.L.M. 208+16.18

Grid: Northing: 504520.504 Easting: 1826362.0920



RECORD STA. 208+00
 RR.SPK.
 10-08-85

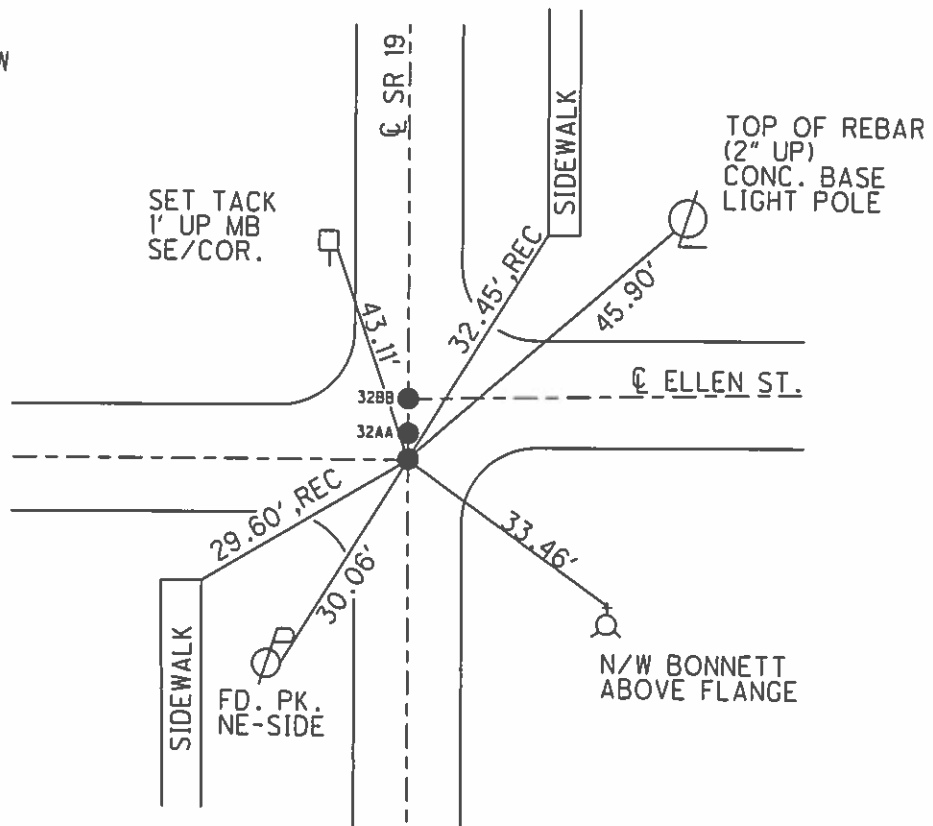
NOTE: 32 TO 32AA= 1.05'
 32AA TO 32BB=3.60'

SET PK/WASHER
 09-28-85, JLR

FD. RSPK 0.25' BELOW
 GPS, REF32
 01-14-13, EBW

GPS, REF32
 8-20-15

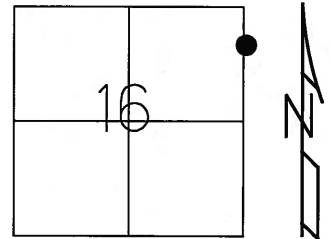
SET MAG/W
 GPS, NEWREF32
 7-21-16, JFO



O.D.O.T. DISTRICT 2 SURVEY OFFICE (USE ONLY)

| | | |
|-------------------------|-------------------------|------------------------------|
| PERSONNEL | REFERENCE NO. <u>32</u> | SHEET <u>41</u> OF <u>62</u> |
| NOTES <u>CANTERBURY</u> | DATE <u>04-20-06</u> | ROUTE <u>SR 19</u> |
| H.C. <u>MICKLOVICK</u> | WEATHER <u>SUNNY</u> | COUNTY <u>SENECA</u> |
| R.C. <u>HANKE</u> | TEMP. <u>+70°</u> | TOWNSHIP <u>BLOOM</u> |
| | | SECTION <u>16</u> |
| | | T <u>1</u> N R <u>16</u> E |

TYPE MONUMENT FD. PK/ SHANK
~~ON SURFACE~~ - BELOW 2" DOWN
~~LEFT~~ - C PAV'T - ~~RIGHT~~ ON CL. SR#19 (ON CL. WEST)
10' TO RT. EDGE OF CURB
 S.L.M. 207+90 (SV41)

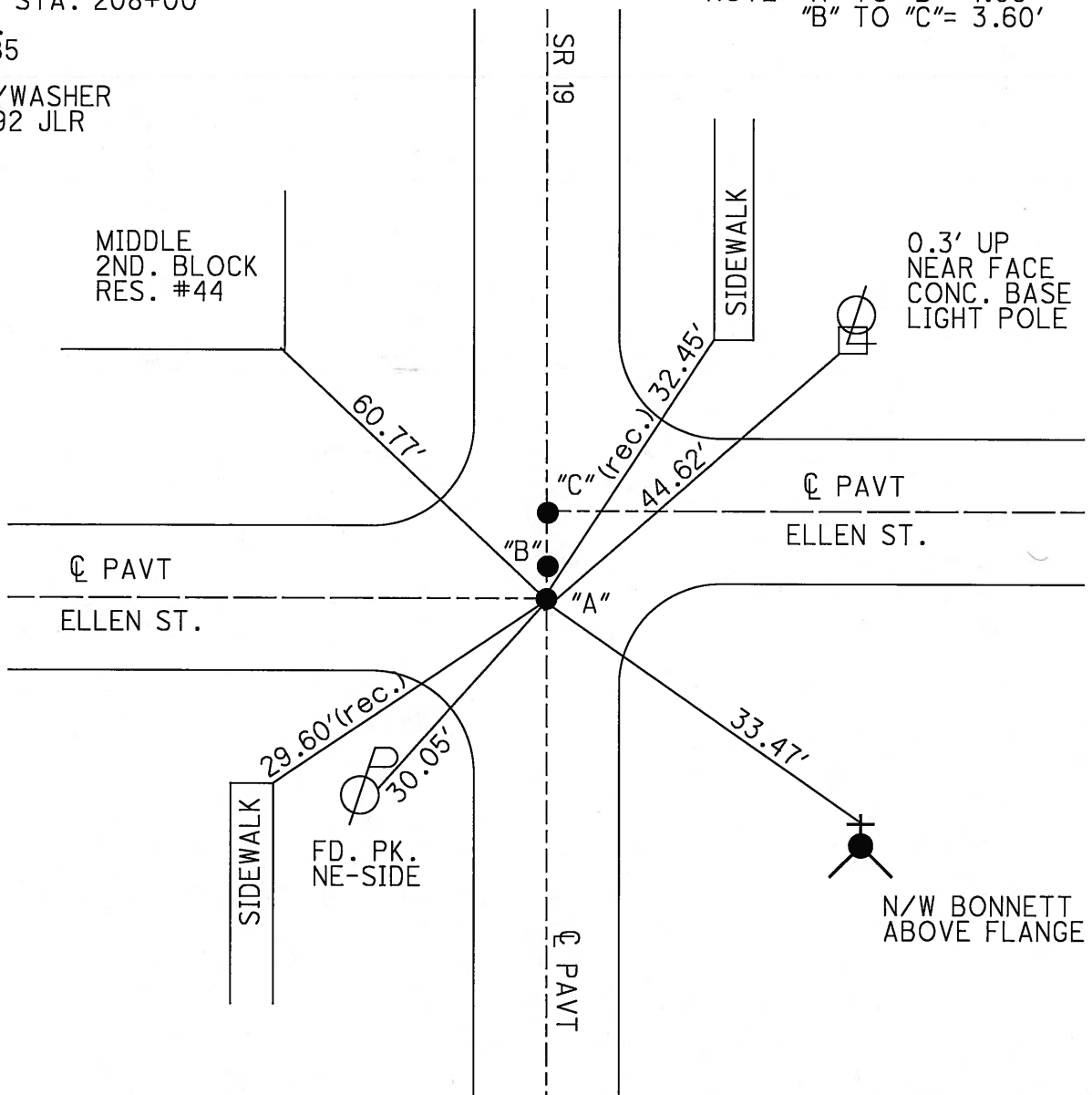


Grid: Northing: _____ Easting: _____

RECORD STA. 208+00
 RR.SPK.
 10-08-85

SET PK/WASHER
 09-28-92 JLR

NOTE: "A" TO "B" = 1.05'
 "B" TO "C" = 3.60'



O.D.O.T. DISTRICT 2 SURVEY OFFICE

PERSONNEL

REFERENCE NO. 32

SHEET 37 OF 53

NOTES Cheney

H.C. RIPPLE

R.C. BARBOUR

Geyman

DATE 6-22-1992

WEATHER SUNNY

TEMP. 70°

ROUTE SR#19

COUNTY SENECA

TOWNSHIP Bloom

SECTION 15 & 16

T. 1 N. R 16 E

TYPE MONUMENT PK's/WASHERS

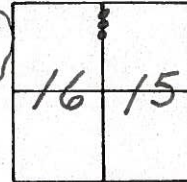
ON SURFACE - ~~BELOW~~ yes

~~LEFT - & PAV'T. - RIGHT~~ yes

10' TO RT. EDGE PAVEMENT

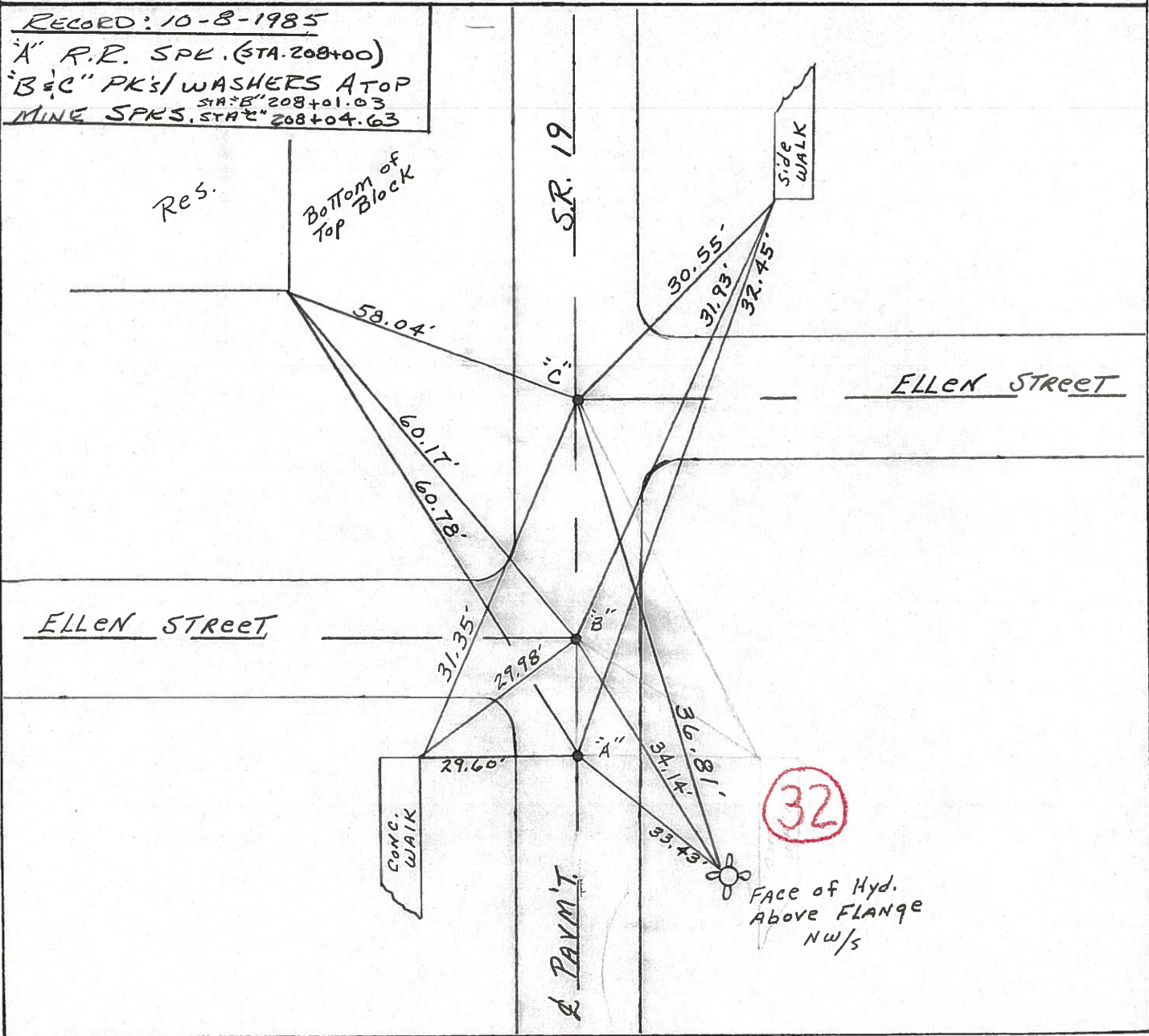
S.L.M. P.O.T. - 207+90 - 207+91 - 207+94

SET PK/WASHERS
 9-28-1992
 J.L.R.



RECORDED: 10-8-1985

"A" R.R. SPK. (STA. 208+00)
 "B & C" PK's/WASHERS ATOP
 STA "B" 208+01.03
 MINE SPKS. STA "C" 208+04.63



O.D.O.T. DISTRICT 2 SURVEY OFFICE

PERSONNEL

REFERENCE NO. 32

SHEET 37 OF

NOTES CRONIN Vac.

DRAWN 10/22/85

H.C. PIPPLE

DATE 10/18/85

R.C. BARBOUR

WEATHER SONNY

GEYMAN

TEMP. 63°

ROUTE #19

COUNTY SENECA

TOWNSHIP BLOOM

SECTION 15 & 16

T 1 N R 16 E

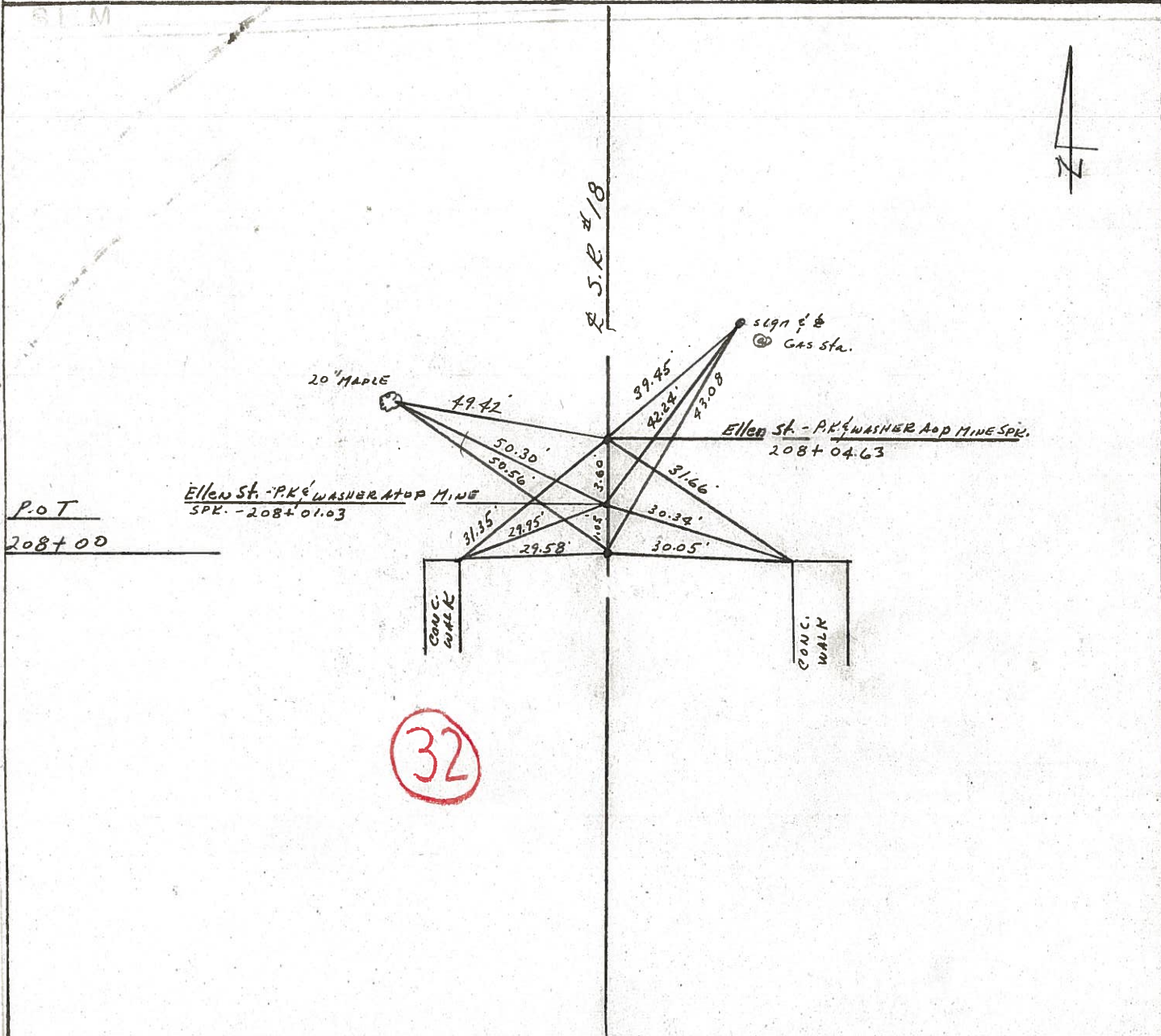
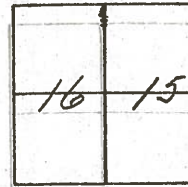
TYPE MONUMENT RR spike

ON SURFACE - BELOW 1" BELOW

LEFT - & PAV'T. - RIGHT & PAV'T.

TO EDGE PAVEMENT

S.L.M. 208700



32

County SENECA S.R. 19

Date 7/18/79

Township BLOOM

Weather cloudy

Section Either 15 or 16

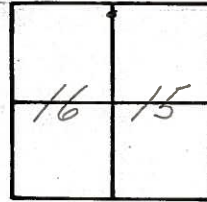
Temp. 69°

T 1 N, R 16 E

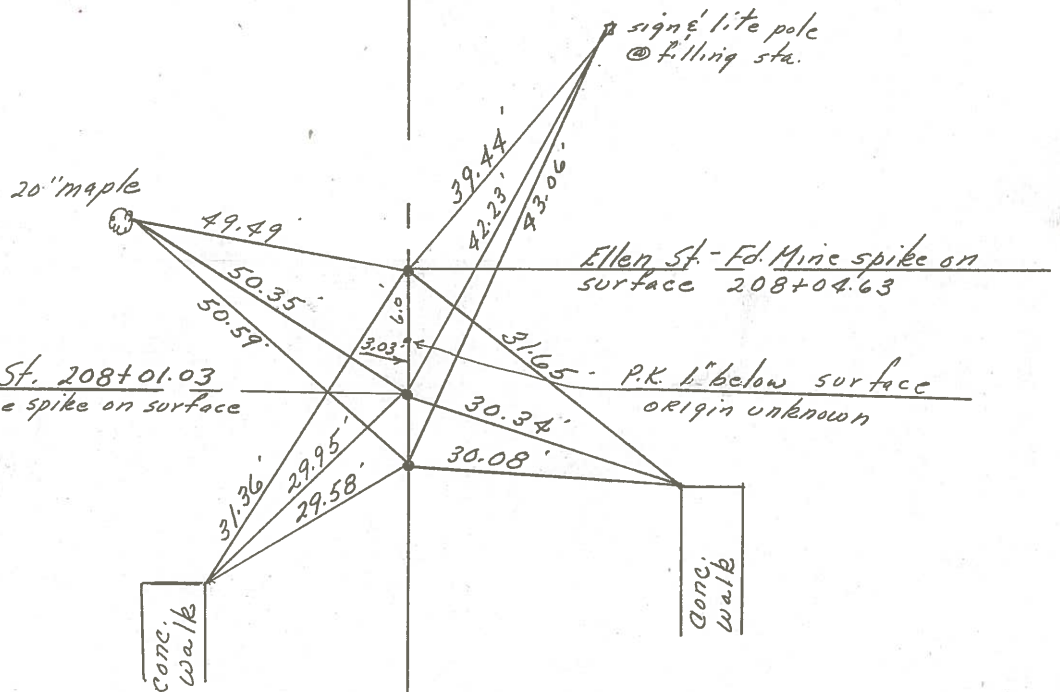
Personnel Cronin

Ripple

Gyman



32



P.O.T. _____
 208+00 S.L.M. _____
 Fd. R.R. spike _____
 on surface _____

Ellen St. 208+01.03
 Fd. mine spike on surface

Ellen St. - Fd. Mine spike on
 surface 208+04.63

31.65 - P.K. 1" below surface
 origin unknown

S.R. #197

| PERSONNEL | TITLE | PERSONNEL | TITLE |
|-----------|-------|-----------|-------|
| Ash | | | |
| Cronin | | | |
| Ripple | | | |
| Anderson | | | |

COUNTY Seneca

S. R. #19

WEATHER cloudy

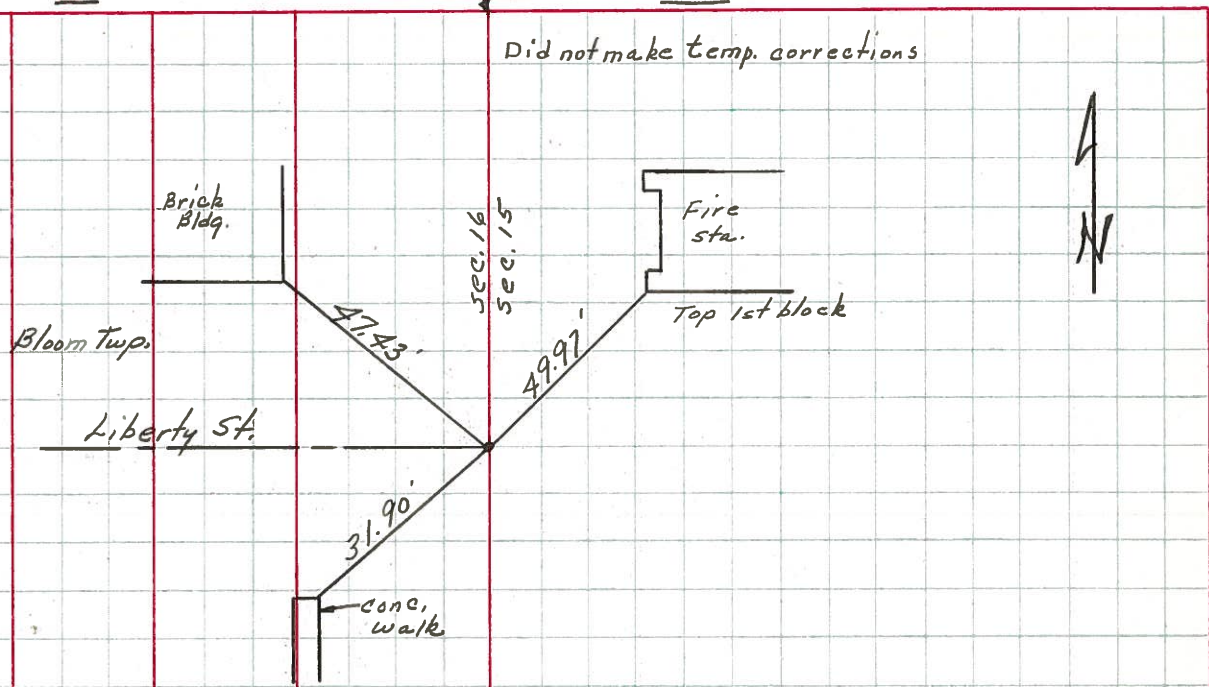
TEMP. 45°

DESCRIPTION Ties for Control Points - Village of Bloomville

JOB NO. _____

32-A

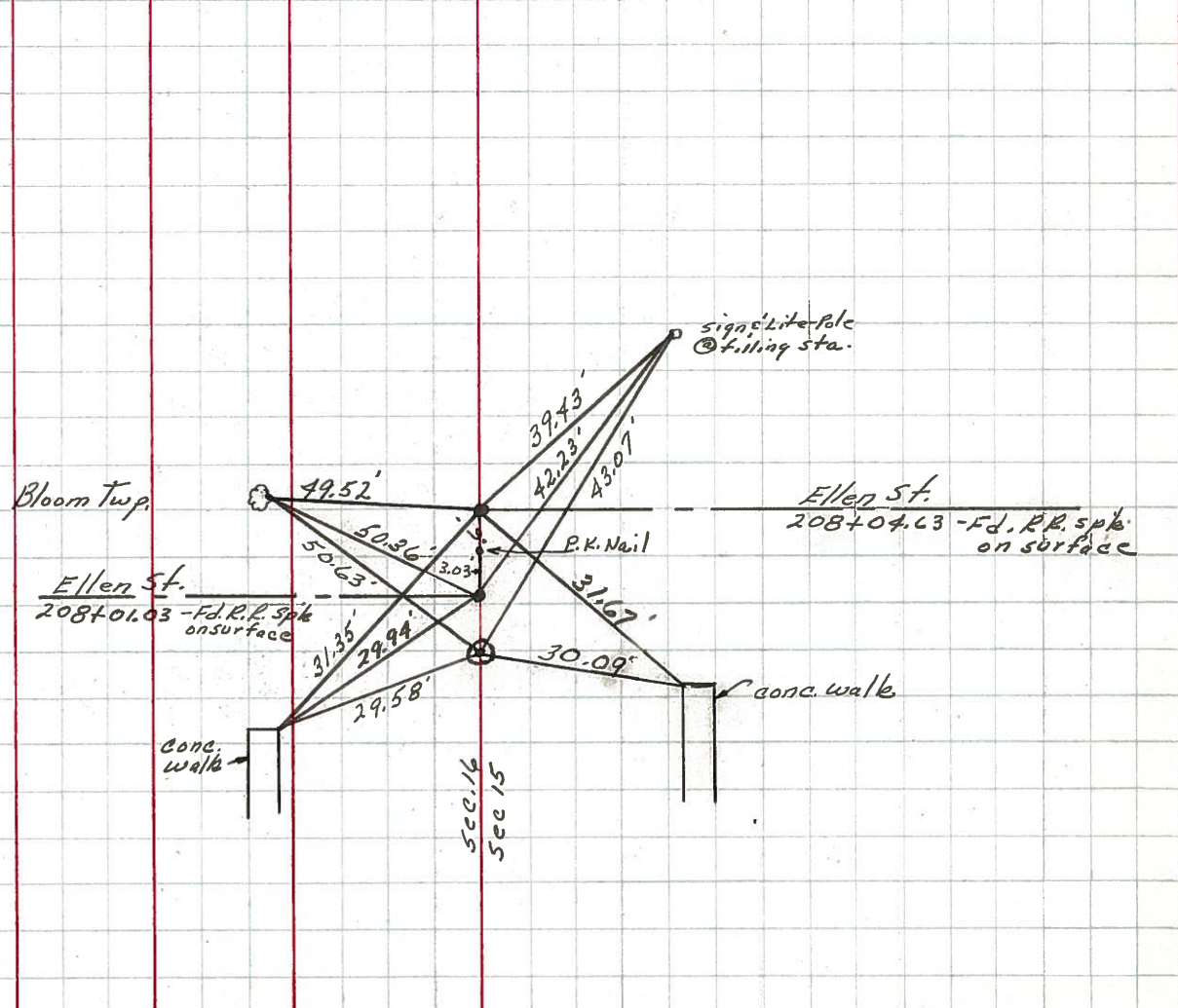
211+15.63 S.L.M.
Fd. R.R. spike on surface



32-BB

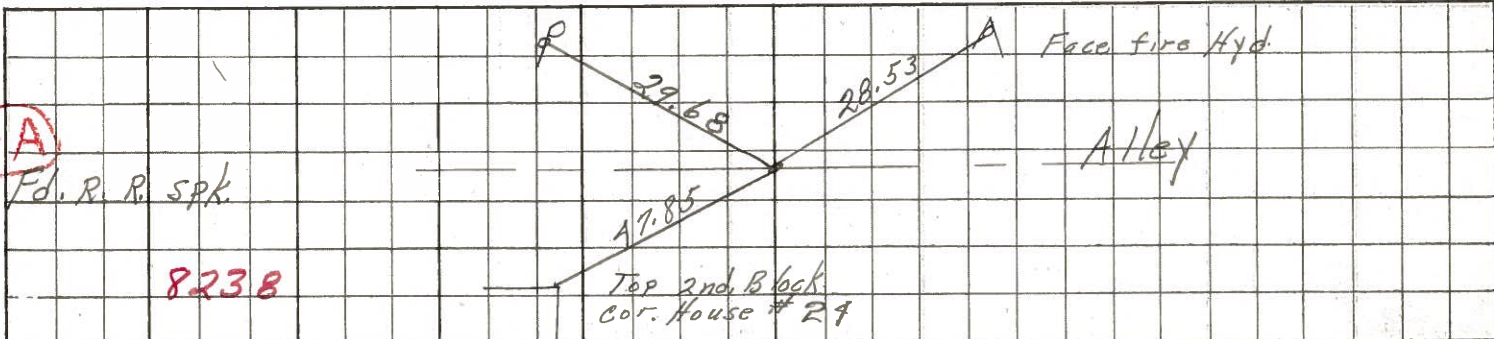
32-AA

P.O.T.
208+00 S.L.M.
Fd. R.R. spike on surface
#32



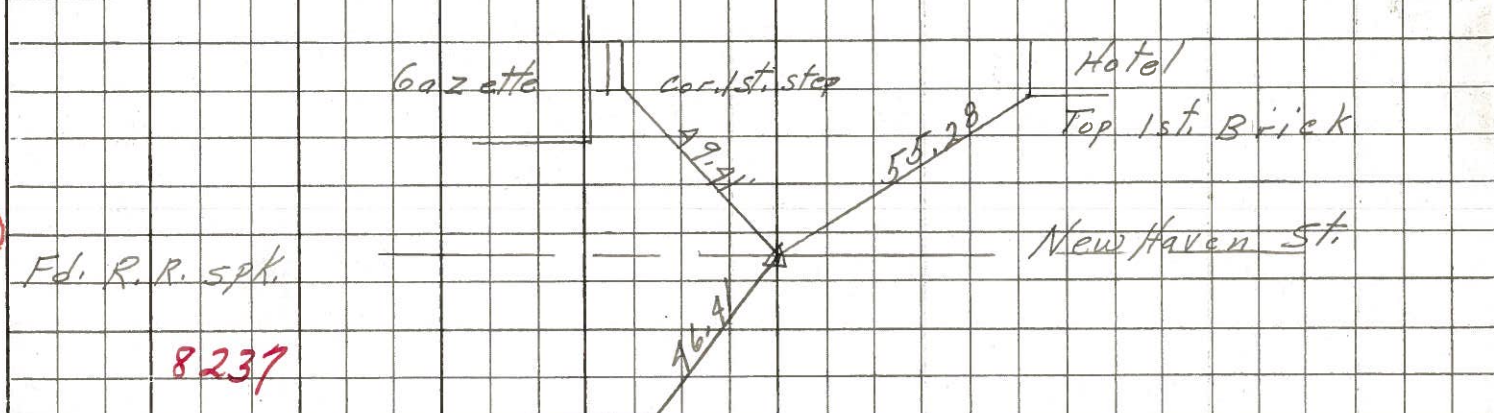
PERSONNEL TITLE PERSONNEL TITLE COUNTY Seneca DATE 7-28-69
Schneider Mosser Barbour Potts S. R. 19 WEATHER Fair
 SEC. Bloomville TEMP. 75°
 DESCRIPTION Ties for Control Points JOB NO.

33-A



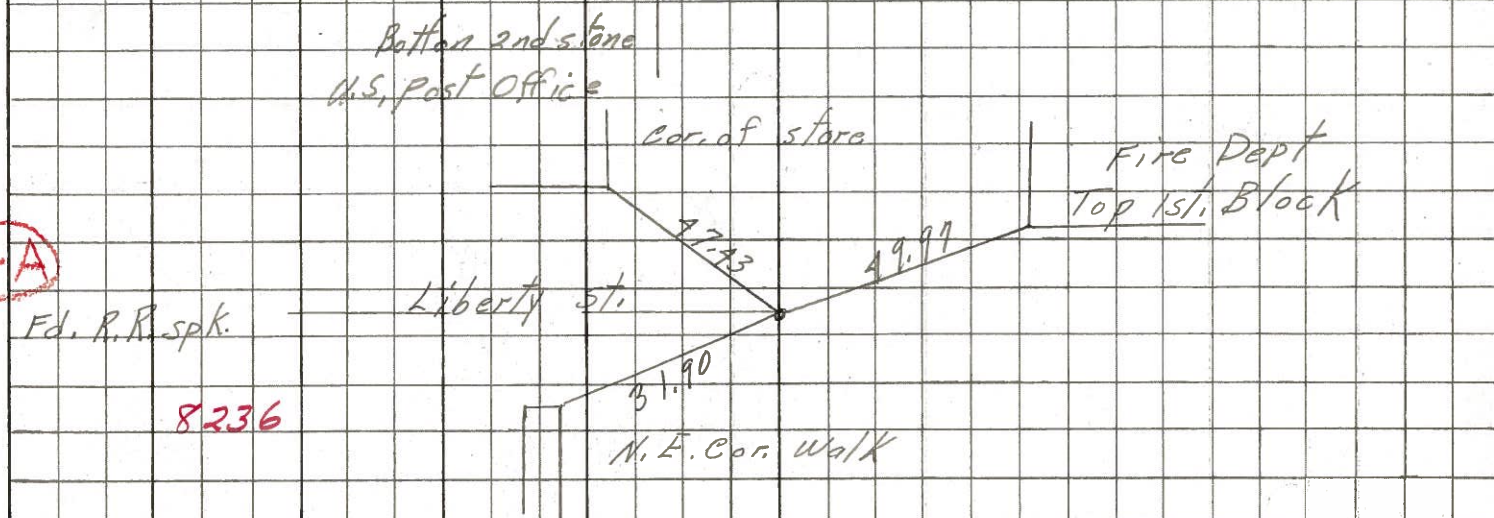
8238

33



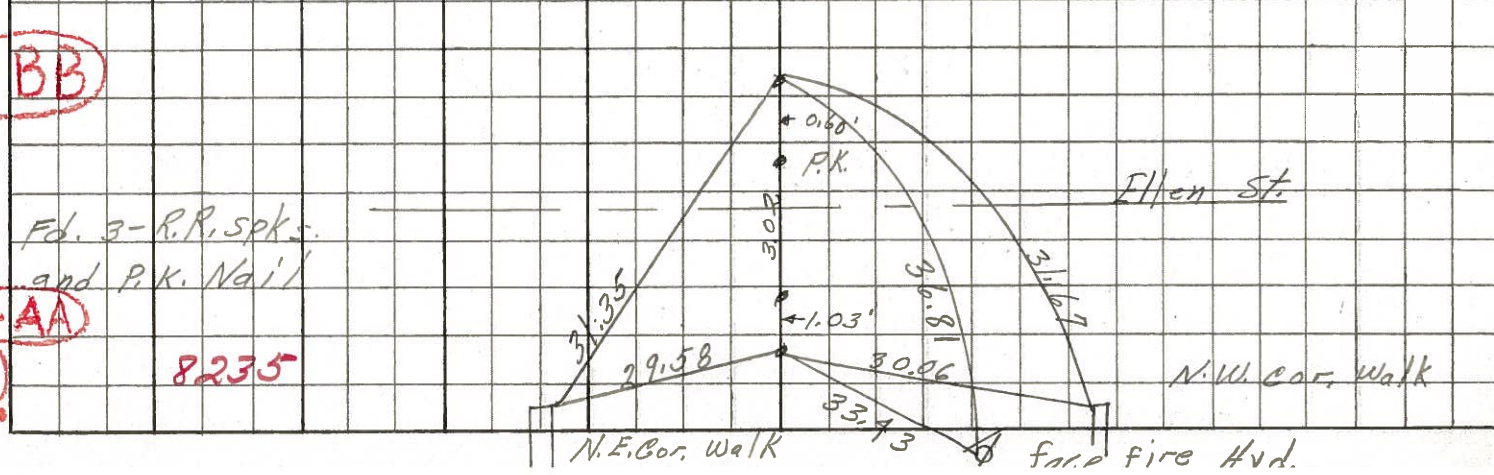
8237

32-A



8236

32-BB



8235

32-AA

32

PERSONNEL TITLE PERSONNEL TITLE

Msh

COUNTY Seneca

DATE Apr. '62

Crew

S. R. #19 Bloomville

WEATHER Clear

SEC. Sen.-19(3.56-4.41)

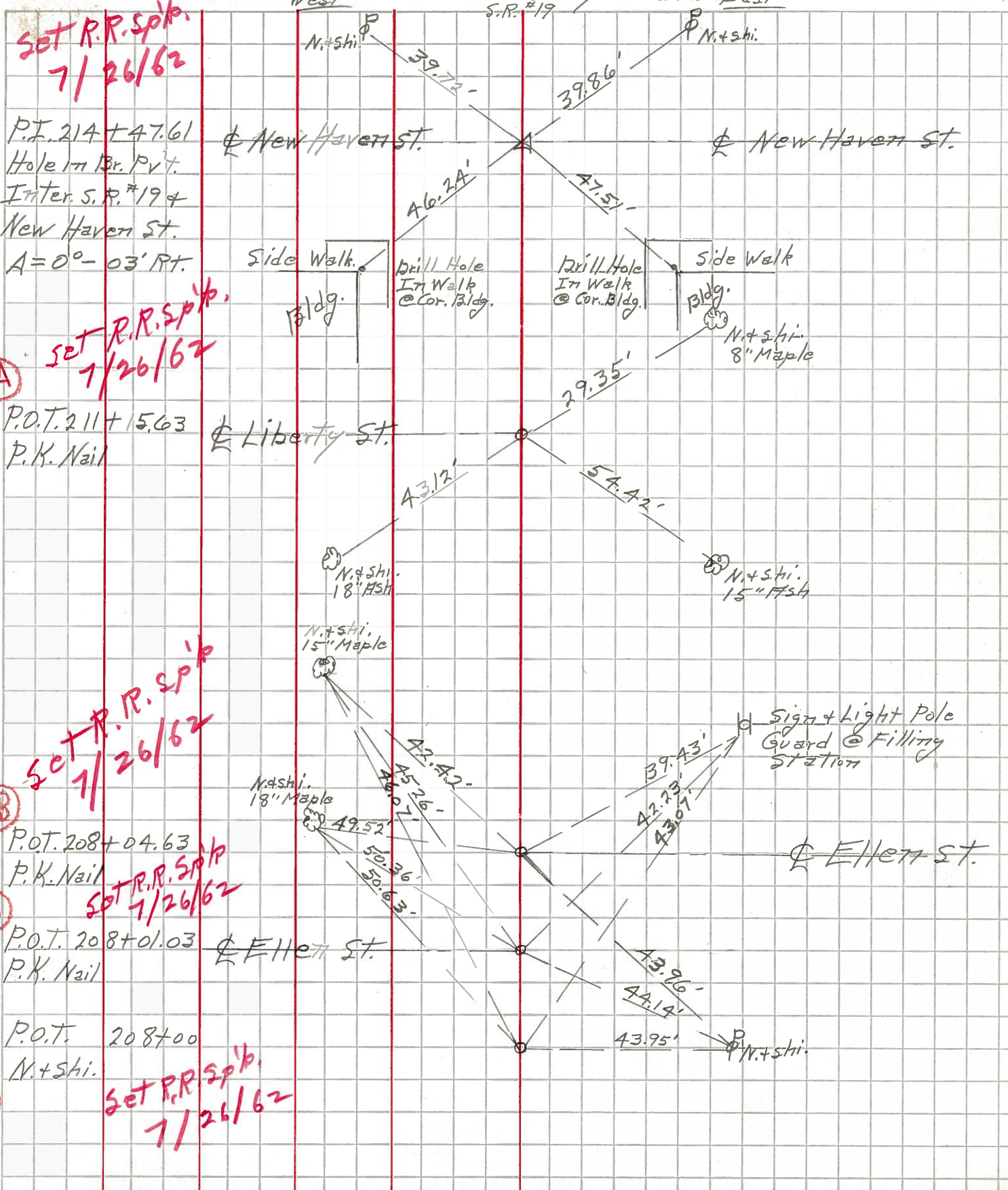
TEMP. 60°

DESCRIPTION

Control Point + Inter. Ties

JOB NO. Const.

LEFT West CENTER LINE - Survey S.R. #19 RIGHT East



Set R.R. Spk. 7/26/62

33

P.T. 214 + 47.61
Hole in Br. Pvt.
Inter. S.R. #19 +
New Haven St.
A = 0° - 03' RT.

New Haven St.

New Haven St.

Set R.R. Spk. 7/26/62

32-A

P.O.T. 211 + 15.63
P.K. Nail

Liberty St.

Set R.R. Spk. 7/26/62

32-BB

P.O.T. 208 + 04.63
P.K. Nail

Sign + Light Pole
Guard @ Filling
Station

Ellen St.

32-AA

P.O.T. 208 + 01.03
P.K. Nail

Ellen St.

32

P.O.T. 208 + 00
N. + Shi.

Set R.R. Spk. 7/26/62

PERSONNEL TITLE PERSONNEL TITLE

Fish

COUNTY Seneca

DATE Apr. '62

Crew

S. R. #19 Bloomville

WEATHER Clear

SEC. Sen-19(3.56-4.41)

TEMP. 69°

DESCRIPTION

Control Point & Inter. Ties

JOB NO. Const.

LEFT West CENTER LINE RIGHT East

33

P.T. 214 + 47.61
Hole in Br. P.V.T.
Inter. S. R. #19 +
New Haven St.
A = 0° - 03' RT.

New Haven St.

New Haven St.

Side Walk

Drill Hole
In Walk
@ Cor. Bldg.

Drill Hole
In Walk
@ Cor. Bldg.

Side Walk

N. + Shi.
8" Maple

32-A

P.O.T. 211 + 15.63
P.K. Nail

Liberty St.

43.12'

29.35'

54.42'

N. + Shi.
18" Maple

N. + Shi.
15" Maple

N. + Shi.
15" Maple

32-BB

P.O.T. 208 + 04.63
P.K. Nail

N. + Shi.
18" Maple

42.42'

45.26'

46.07'

49.52'

50.36'

50.63'

39.43'

42.73'

43.07'

Sign + Light Pole
Guard @ Filling
Station

Ellen St.

32-AA

P.O.T. 208 + 01.03
P.K. Nail

Ellen St.

43.96'

44.14'

43.95'

N. + Shi.

32

P.O.T. 208 + 00
N. + Shi.