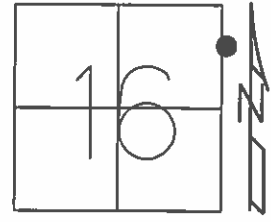


O.D.O.T. DISTRICT 2 SURVEY OFFICE (USE ONLY)

PERSONNEL _____ REFERENCE NO. 32 AA SHEET 42 OF 64

NOTES RHOADES DATE 08-20-15 ROUTE SR 19
 H.C. O'DONNELL WEATHER SUNNY COUNTY SENECA
 R.C. RHOADES TEMP. 64°F TOWNSHIP BLOOM
 _____ SECTION 16
 _____ T 1 N R 16 E

TYPE MONUMENT PK/WASHER
 ON SURFACE - ~~BELOW~~ ON _____
 LEFT - ☉ PAV'T - RIGHT ON _____
10' TO RT. EDGE PAVEMENT
 S.L.M. 208+17.20



Grid: Northing: 504521.55 Easting: 1826362.1232

RECORD STA. 208+01.03
 PK/WASHER ATOP
 MINE SPIKE
 10-08-85

NOTE: 32 TO 32AA= 1.05'
 32AA TO 32BB=3.60'

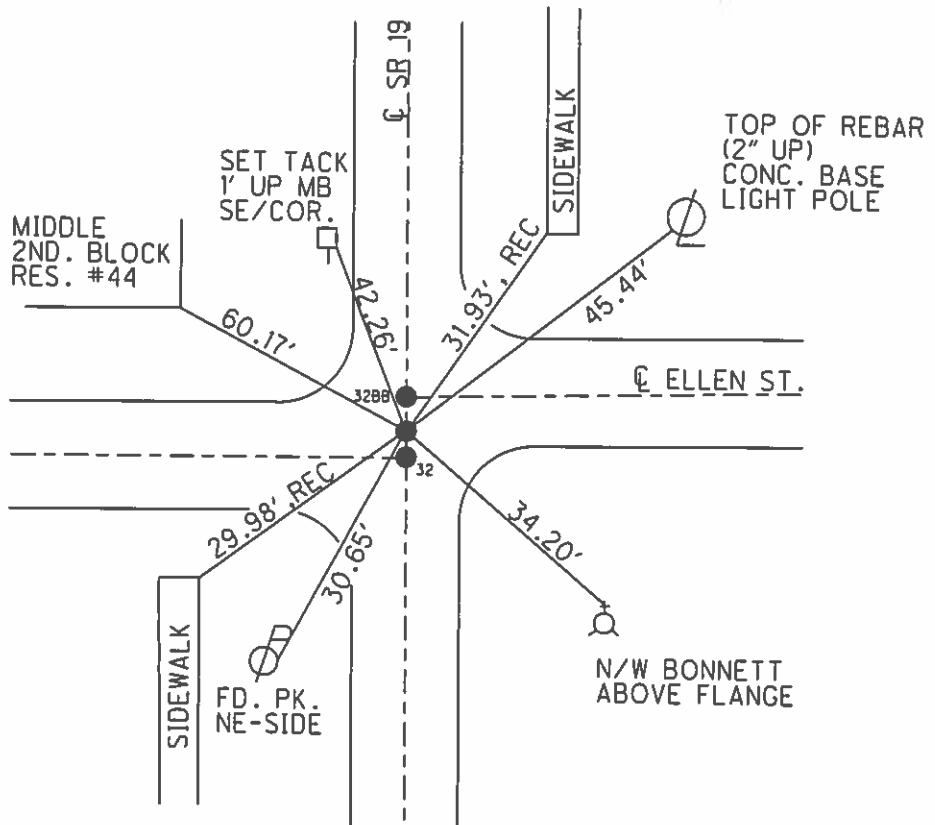
SET PK/WASHER
 09-28-85, JLR

FD PK/WASHER
 12-5-13, JMR

FD. PK/WASHER
 GPS, REFAA32
 01-14-13, EBW

GPS, REFAA32
 8-20-15

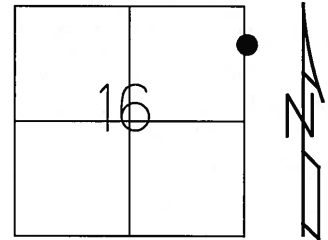
SET MAG/W
 GPS, NEWREFAA32
 7-21-16, JFO



O.D.O.T. DISTRICT 2 SURVEY OFFICE (USE ONLY)

PERSONNEL	REFERENCE NO. <u>32AA</u>	SHEET <u>42</u> OF <u>62</u>
NOTES <u>CANTERBURY</u>	DATE <u>04-20-06</u>	ROUTE <u>SR 19</u>
H.C. <u>MICKLOVICK</u>	WEATHER <u>SUNNY</u>	COUNTY <u>SENECA</u>
R.C. <u>HANKE</u>	TEMP. <u>+70°</u>	TOWNSHIP <u>BLOOM</u>
		SECTION <u>16</u>
		T <u>1</u> N R <u>16</u> E

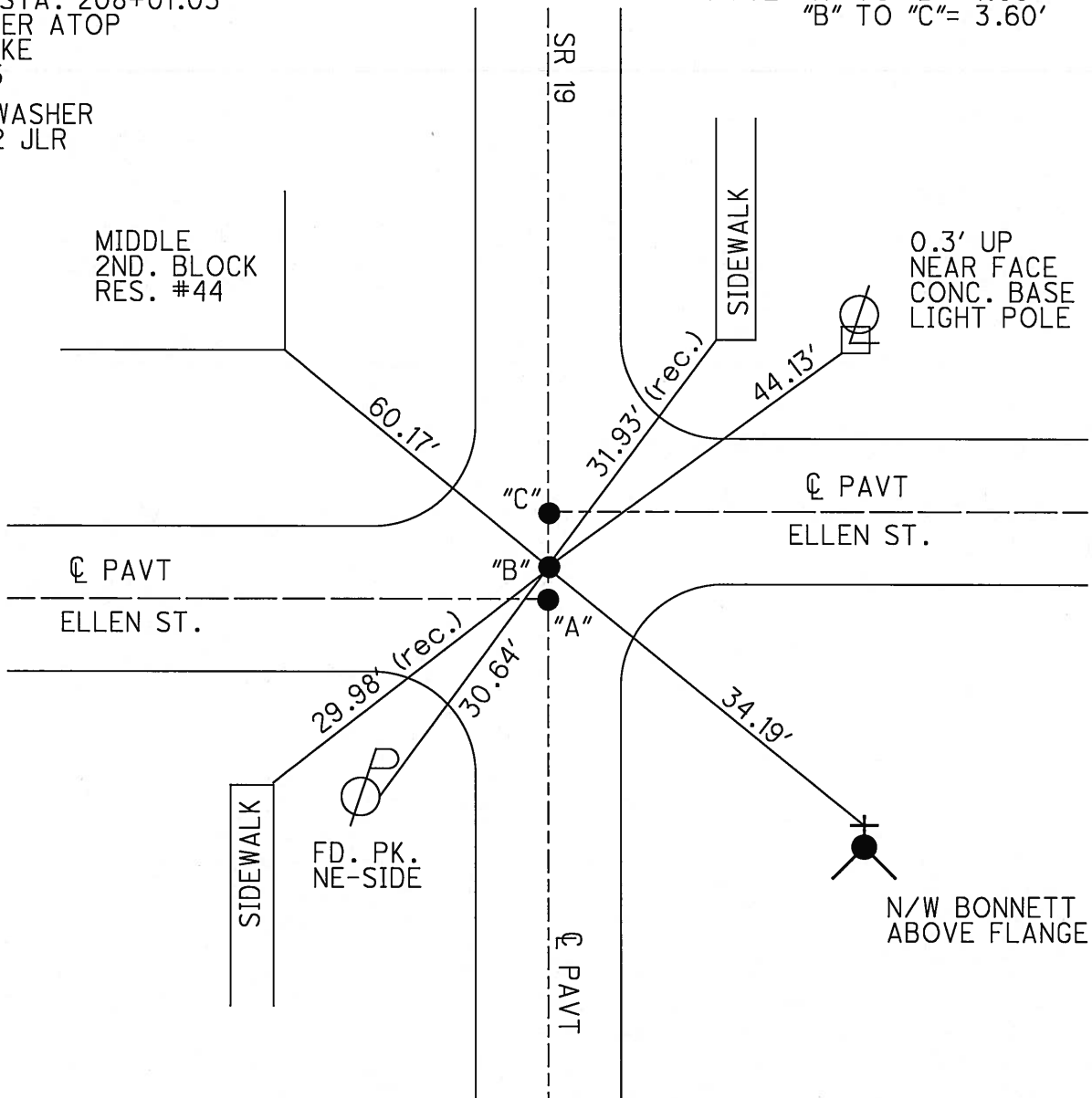
TYPE MONUMENT FD. PK/WASHER
 ON SURFACE = ~~BELOW~~ ON SURFACE
~~LEFT~~ - C PAV'T - ~~RIGHT~~ ON CL SR.#19
10' TO RT. EDGE OF CURB
 S.L.M. 207+91 (SV42)



Grid: Northing: _____ Easting: _____

RECORD STA. 208+01.03
 PK/WASHER ATOP
 MINE SPIKE
 10-08-85
 SET PK/WASHER
 09-28-92 JLR

NOTE: "A" TO "B" = 1.05'
 "B" TO "C" = 3.60'



O.D.O.T. DISTRICT 2 SURVEY OFFICE

PERSONNEL

REFERENCE NO. 32

SHEET 37 OF 53

NOTES Cheney

H.C. RIPPLE

R.C. BARBOUR

GEYMAN

DATE 6-22-1992

WEATHER SUNNY

TEMP. 70°

ROUTE SR#19

COUNTY SENECA

TOWNSHIP BLOOM

SECTION 15 & 16

T. 1 N. R 16 E

TYPE MONUMENT PK'S/WASHERS

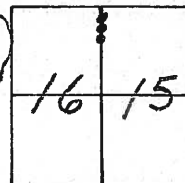
ON SURFACE - BELOW yes

LEFT- & PAV'T. - RIGHT yes

10' TO RT. EDGE PAVEMENT

S.L.M. P.O.T. 207+90 - 207+91 - 207+94

SET PK/WASHERS
 9-28-1992
 J.L.R.



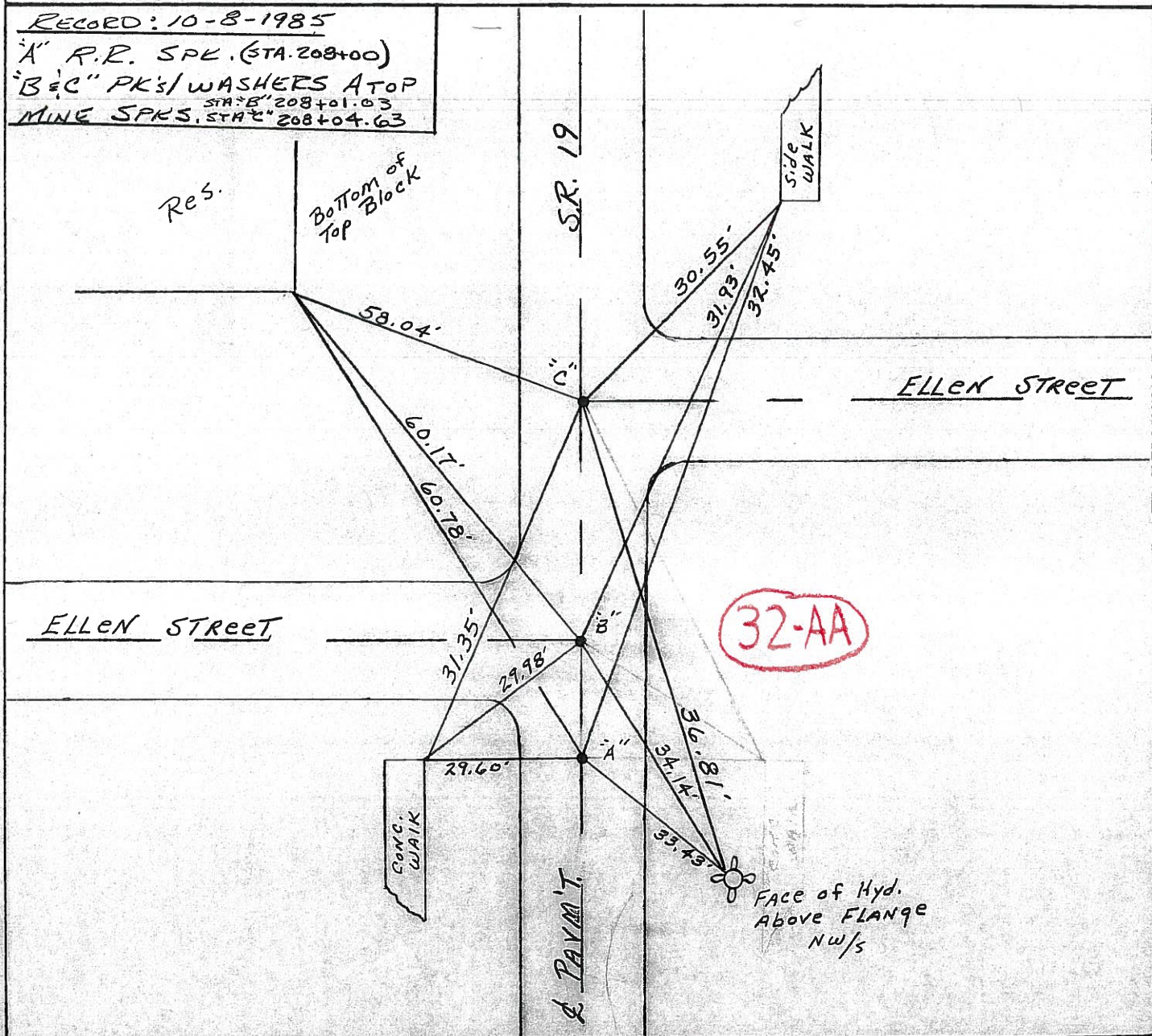
RECORDED: 10-8-1985

1" R.R. SPK. (STA. 208+00)

3" B & C" PK'S/WASHERS AT OP

STA. E" 208+01.03

MINE SPKS. STA. W" 208+04.63



O.D.O.T. DISTRICT 2 SURVEY OFFICE

PERSONNEL

REFERENCE NO. 32

SHEET 37 OF

NOTES CROWN VAC.

REFERENCE NO. DRAWN 10/22/85

H.C. RIPPLE

DATE 10/8/85

R.C. BARBOUR

WEATHER SBNNY

GEYMAN

TEMP. 63°

ROUTE 19

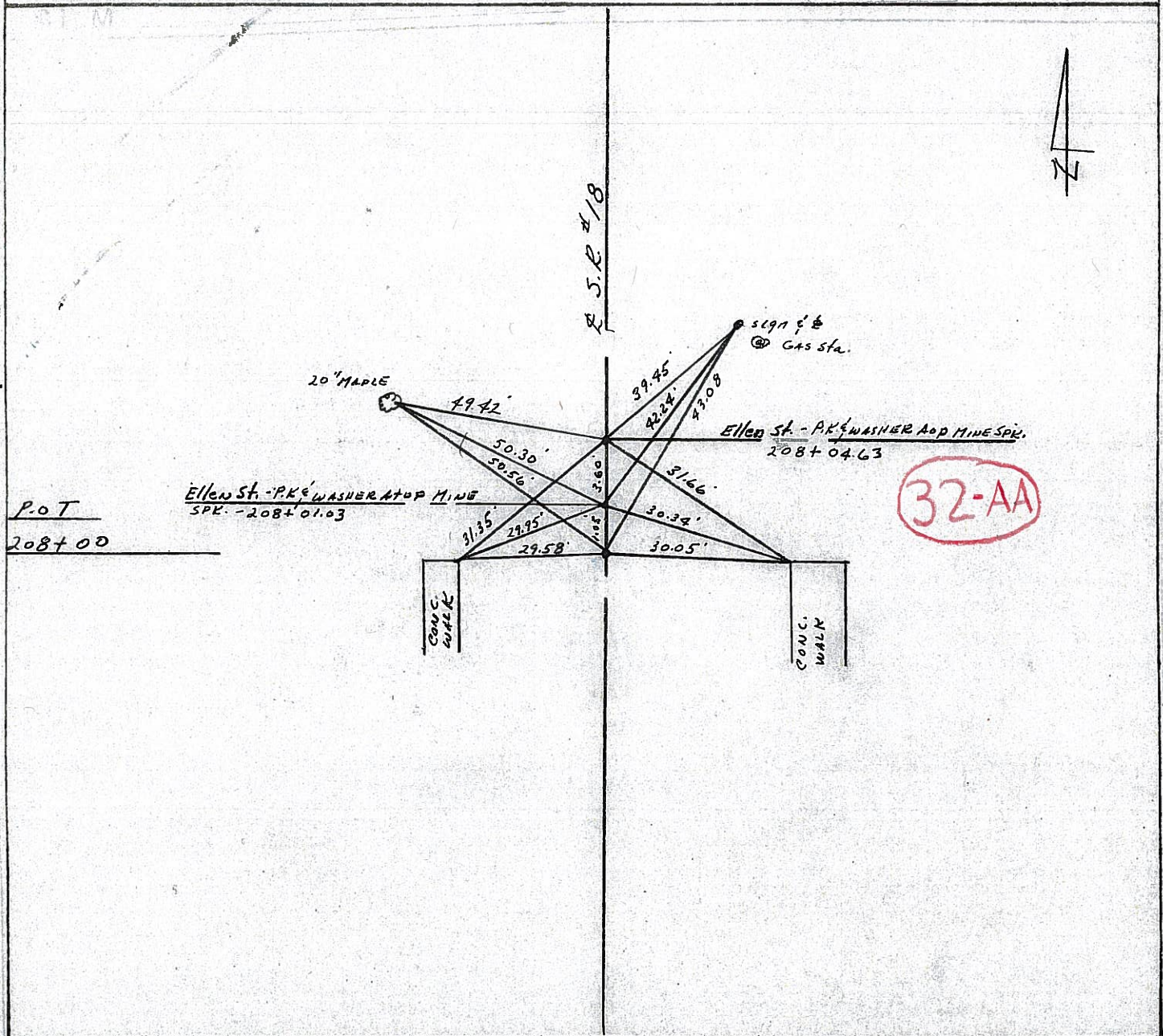
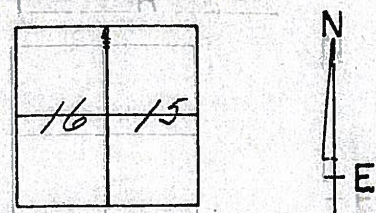
COUNTY SENECA

TOWNSHIP BLOOM

SECTION 15 & 16

T 1 N R 16 E

TYPE MONUMENT R.R. spike
 ON SURFACE - BELOW 1" BELOW
 LEFT - PAV'T. - RIGHT & PAV'T.
 TO EDGE PAVEMENT
 S.L.M. 208+00



32-AA

County SENECA S.R. 19

Date 7/18/79

Township BLOOM

Weather cloudy

Section Either 15 or 16

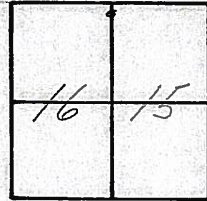
Temp. 69°

T1N, R16E

Personnel Cronin

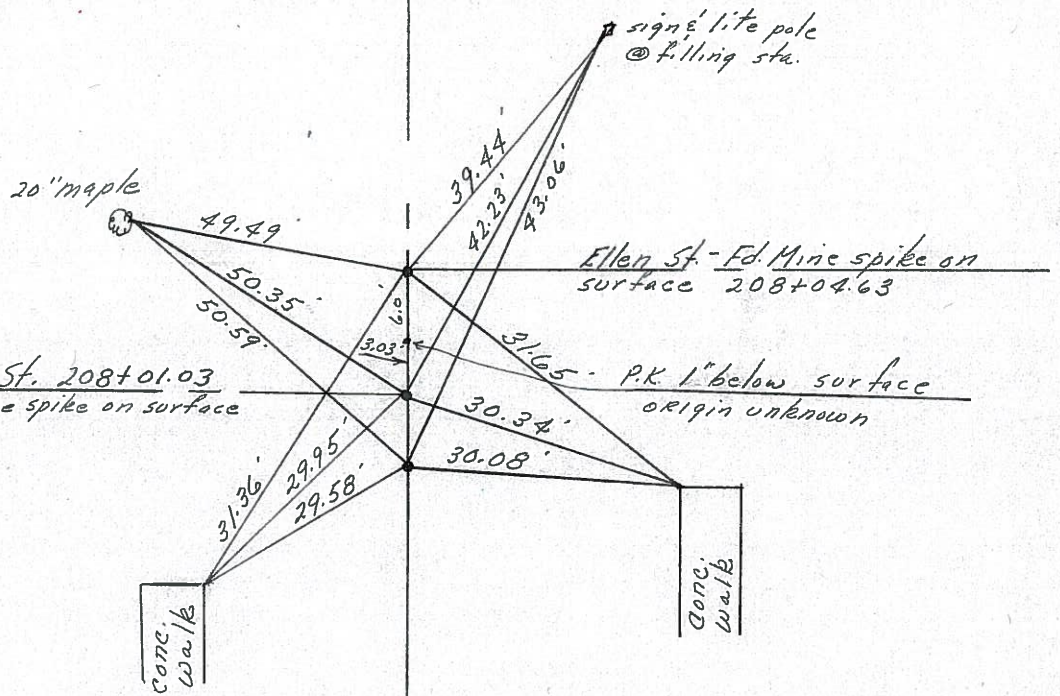
Ripple

Geyman



~~32~~

32-AA



P.O.T. _____
 208+00 S.L.M. _____
 Fd. R.R. spike _____
 on surface _____

S.R. #197

PERSONNEL TITLE PERSONNEL TITLE

Ash
Cronin
Ripple
Anderson

COUNTY Seneca
S. R. #19
SEC.

WEATHER cloudy
TEMP. 45°

DESCRIPTION Ties for Control Points - Village of Bloomville

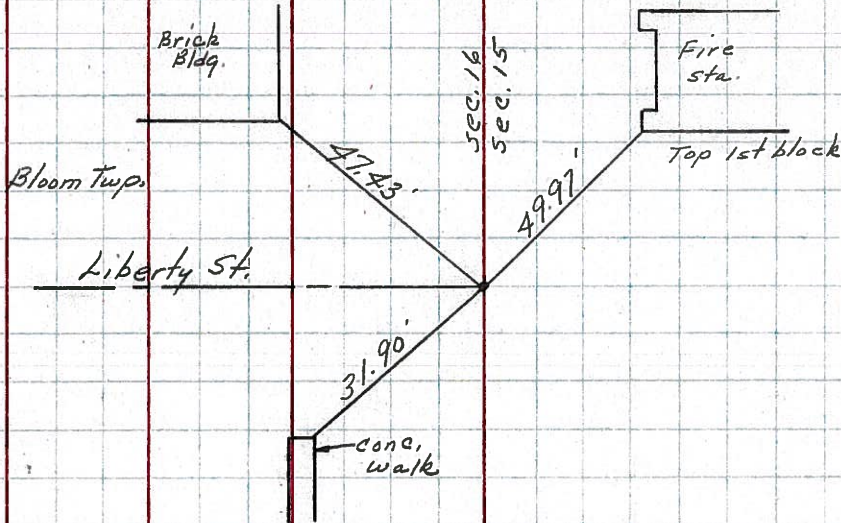
JOB NO.

LEFT CENTER LINE RIGHT

Did not make temp. corrections

32-A

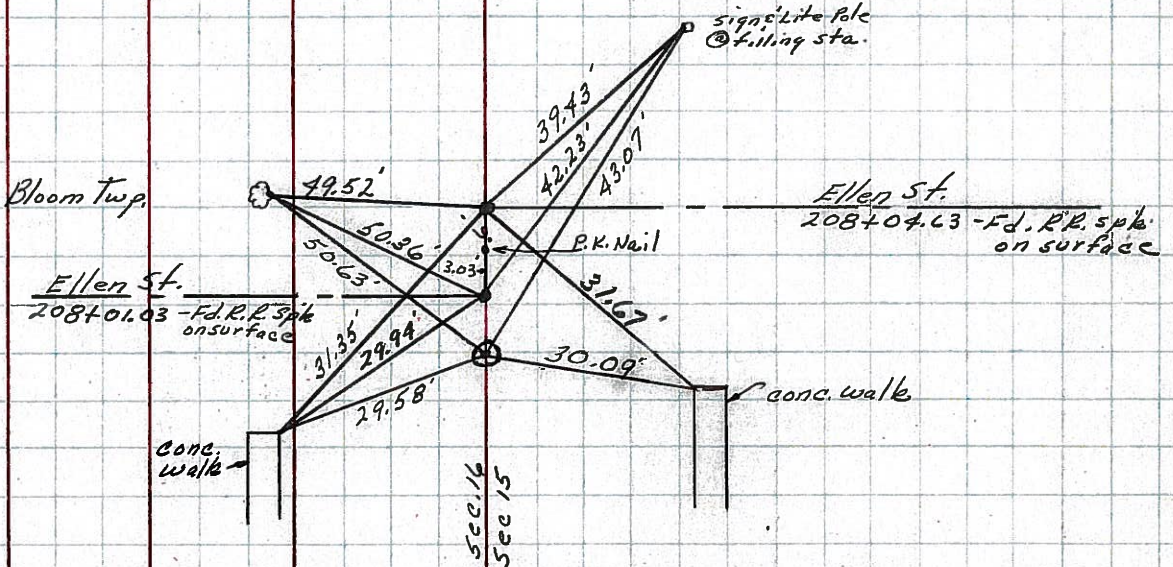
211+15.63 S.L.M.
Fd. R.R. spike on surface



32-BB

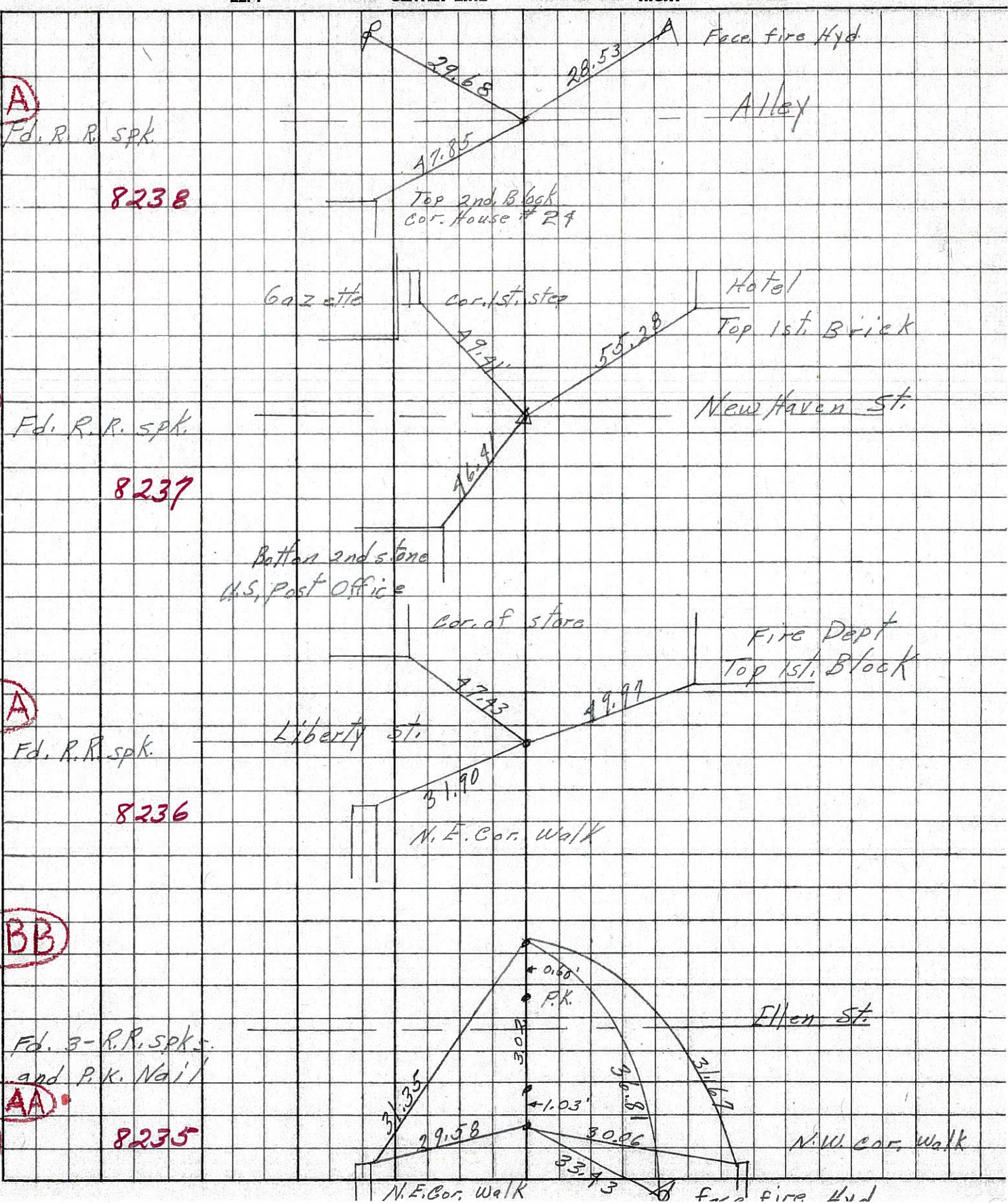
32-AA

P.O.T.
208+00 S.L.M.
Fd. R.R. spike on surface



#32

PERSONNEL	TITLE	PERSONNEL	TITLE	COUNTY	Seneca	DATE	7-28-69	
Schneider				S. R.	19	WEATHER	Fair	
Mosser				SEC.	Bloomville	TEMP.	75°	
Barbour								
Potts								
DESCRIPTION	Ties for Control Points						JOB NO.	



PERSONNEL TITLE PERSONNEL TITLE

COUNTY Seneca DATE Apr. '62

S. R. #19 Bloomville WEATHER Clear

SEC. Sen-19(356-44) TEMP. 60°

DESCRIPTION Control Point + Inter. Ties JOB NO. Const.

LEFT West CENTER LINE - Survey S.R. #19 RIGHT East

33

Set R.R. Spk. 7/26/62

P.O.T. 214 + 47.61
Hole in Br. P.V.T.
Inter. S.R. #19 +
New Haven St.
A = 0° - 03' Rt.

New Haven St.

New Haven St.

32-A

Set R.R. Spk. 7/26/62

P.O.T. 211 + 15.63
P.K. Nail

Liberty St.

32-BB

Set R.R. Spk. 7/26/62

P.O.T. 208 + 04.63
P.K. Nail

18" Maple

Sign + Light Pole
Guard @ Filling
Station

32-AA

Set R.R. Spk. 7/26/62

P.O.T. 208 + 01.03
P.K. Nail

Ellet St.

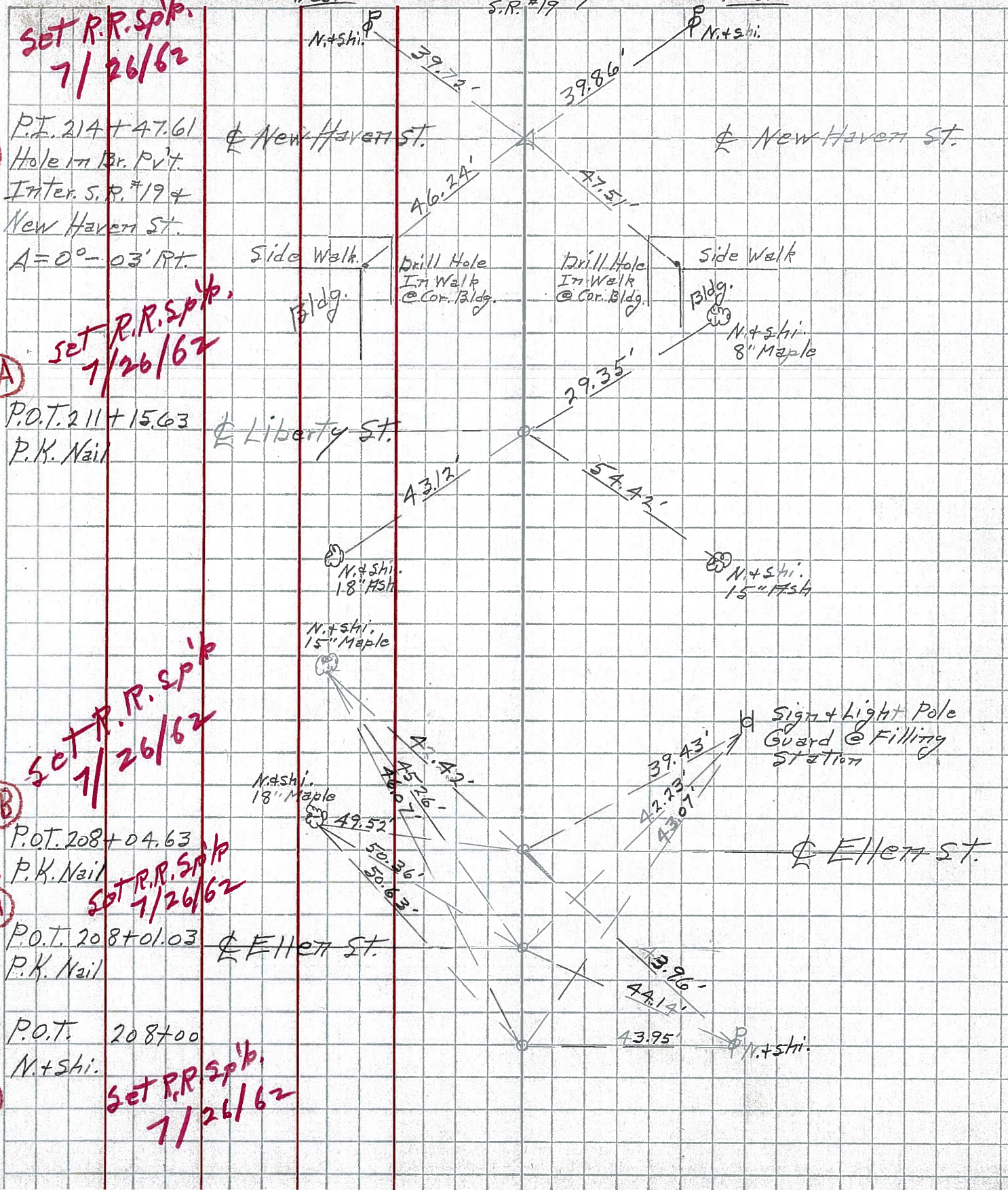
Ellet St.

32

Set R.R. Spk. 7/26/62

P.O.T. 208 + 00
N. + Shi.

N. + Shi.



PERSONNEL TITLE PERSONNEL TITLE

COUNTY Semeca DATE Apr. '62

S. R. #19 Bloomsville WEATHER C/6

SEC Sem-19(356-4A) TEMP 6°

DESCRIPTION Control Point + Inter. Ties JOB NO. Const

LEFT West CENTER LINE Survey S.R. #19 RIGHT East

33

P.I. 214 + 47.61
Hole in Br. P.V.T.
Inter. S.R. #19 +
New Haven St.
A = 0° - 03' RT.

New Haven St.

New Haven St.

32-A

P.O.T. 211 + 15.63
P.K. Nail

Liberty St.

32-BB

P.O.T. 208 + 04.65
P.K. Nail

Ellen St.

32-AA

P.O.T. 208 + 01.03
P.K. Nail

Ellen St.

32

P.O.T. 208 + 00
N + Shi.

N + Shi.

