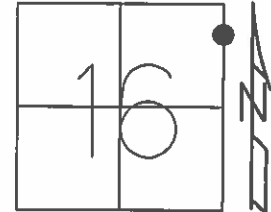


O.D.O.T. DISTRICT 2 SURVEY OFFICE (USE ONLY)

PERSONNEL _____ REFERENCE NO. 32 BB SHEET 43 OF 64
 NOTES RHOADES DATE 08-20-15 ROUTE SR 19
 H.C. O'DONNELL WEATHER SUNNY COUNTY SENECA
 R.C. RHOADES TEMP. 64°F TOWNSHIP BLOOM
 _____ SECTION 16
 _____ T 1 N R 16 E

TYPE MONUMENT MINE SPIKE
~~ON SURFACE~~ - BELOW 4"
 LEFT - ☉ PAV'T - RIGHT ON, (ON CL. EAST)
10' TO RT. EDGE PAVEMENT
 S.L.M. 208+20.84
 Grid: Northing: 504525.1144 Easting: 1826362.1371



RECORD STA. 208+04.63
 PK/WASHER ATOP
 MINE SPIKE
 10-08-85

NOTE: 32 TO 32AA= 1.05'
 32AA TO 32BB=3.60'

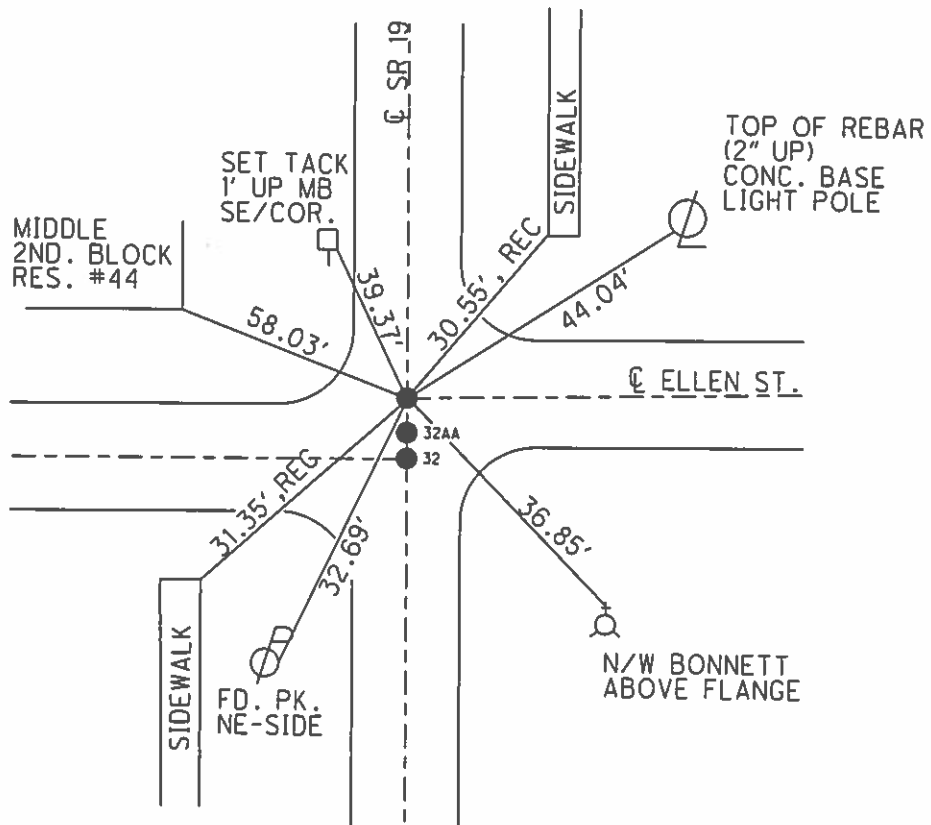
SET PK/WASHER
 09-28-85, JLR

FD PK/WASHER
 12-5-13, JMR

FD. PK/WASHER
 GPS, REFBB32
 01-14-13, EBW

GPS, REFBB32
 8-20-15

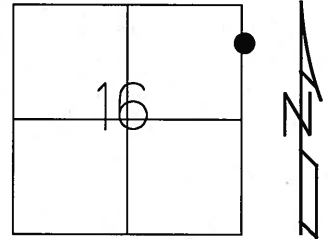
SET MAG/W
 GPS, NEWREFBB32
 7-21-16, JFO



O.D.O.T. DISTRICT 2 SURVEY OFFICE (USE ONLY)

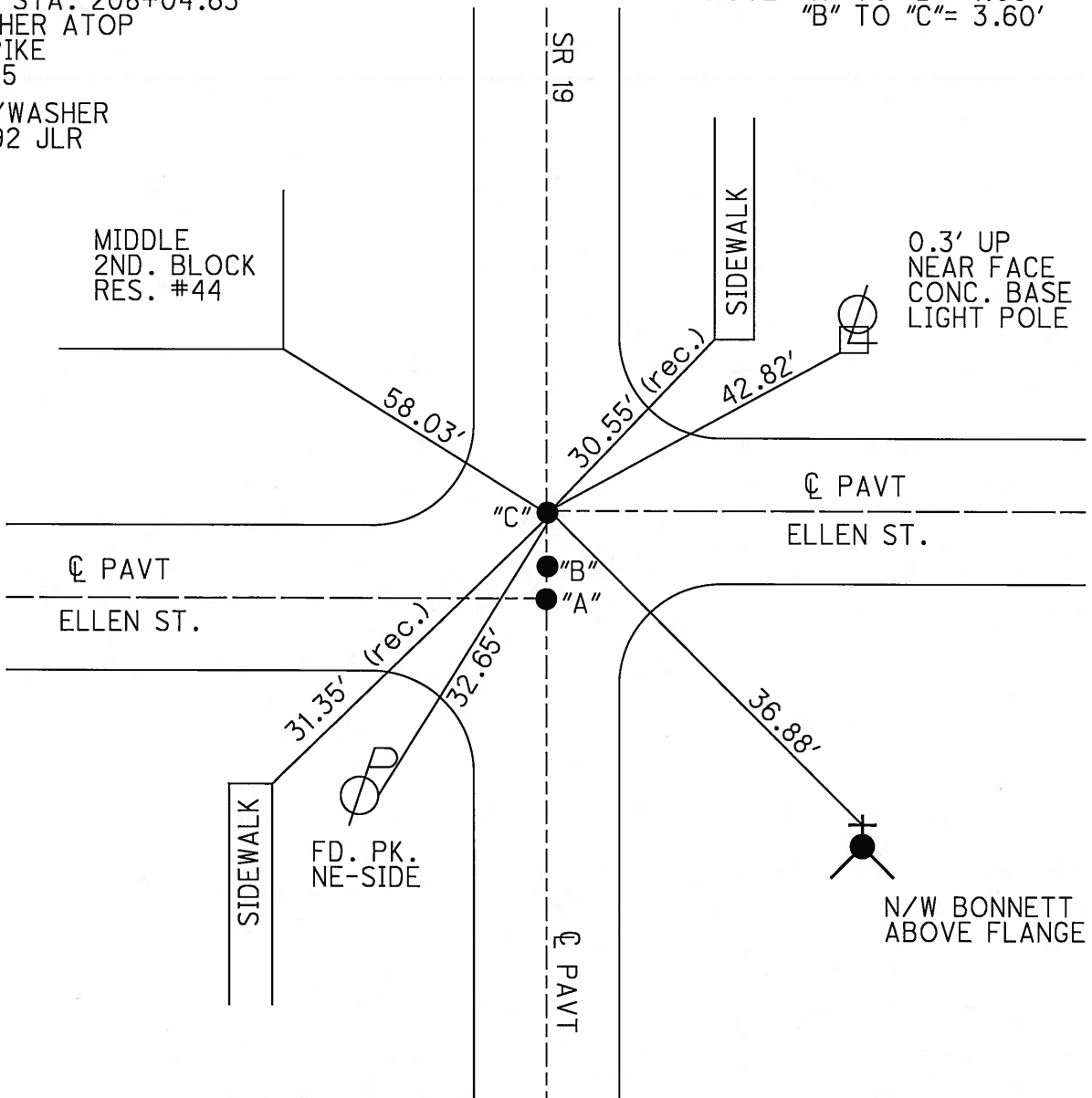
PERSONNEL _____ REFERENCE NO. 32BB SHEET 43 OF 62
 NOTES CANTERBURY DATE 04-20-06 ROUTE SR 19
 H.C. MICKLOVICK WEATHER SUNNY COUNTY SENECA
 R.C. HANKE TEMP. +70° TOWNSHIP BLOOM
 _____ SECTION 16
 _____ T 1 N R 16 E

TYPE MONUMENT FD. PK/WASHER
 ON ~~SURFACE~~ - BELOW ON SURFACE
~~LEFT~~ - C PAV'T - ~~RIGHT~~ ON CL SR.#19 (ON CL. EAST)
10' TO RT. EDGE OF CURB
 S.L.M. 207+95 (SV43)
 Grid: Northing: _____ Easting: _____



RECORD STA. 208+04.63
 PK/WASHER ATOP
 MINE SPIKE
 10-08-85
 SET PK/WASHER
 09-28-92 JLR

NOTE: "A" TO "B" = 1.05'
 "B" TO "C" = 3.60'



O.D.O.T. DISTRICT 2 SURVEY OFFICE

PERSONNEL

REFERENCE NO. 32

SHEET 37 OF 53

NOTES Cheney

H.C. RIPPLE

R.C. BARBOUR

Geyman

DATE 6-22-1992

WEATHER SUNNY

TEMP. 70°

ROUTE SR#19

COUNTY Seneca

TOWNSHIP Bloom

SECTION 15 & 16

T1 N R 16 E

TYPE MONUMENT PK's/WASHERS

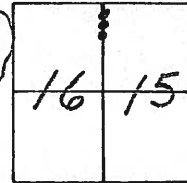
ON SURFACE - ~~BELOW~~ yes

~~LEFT - & PAV'T. - RIGHT~~ yes

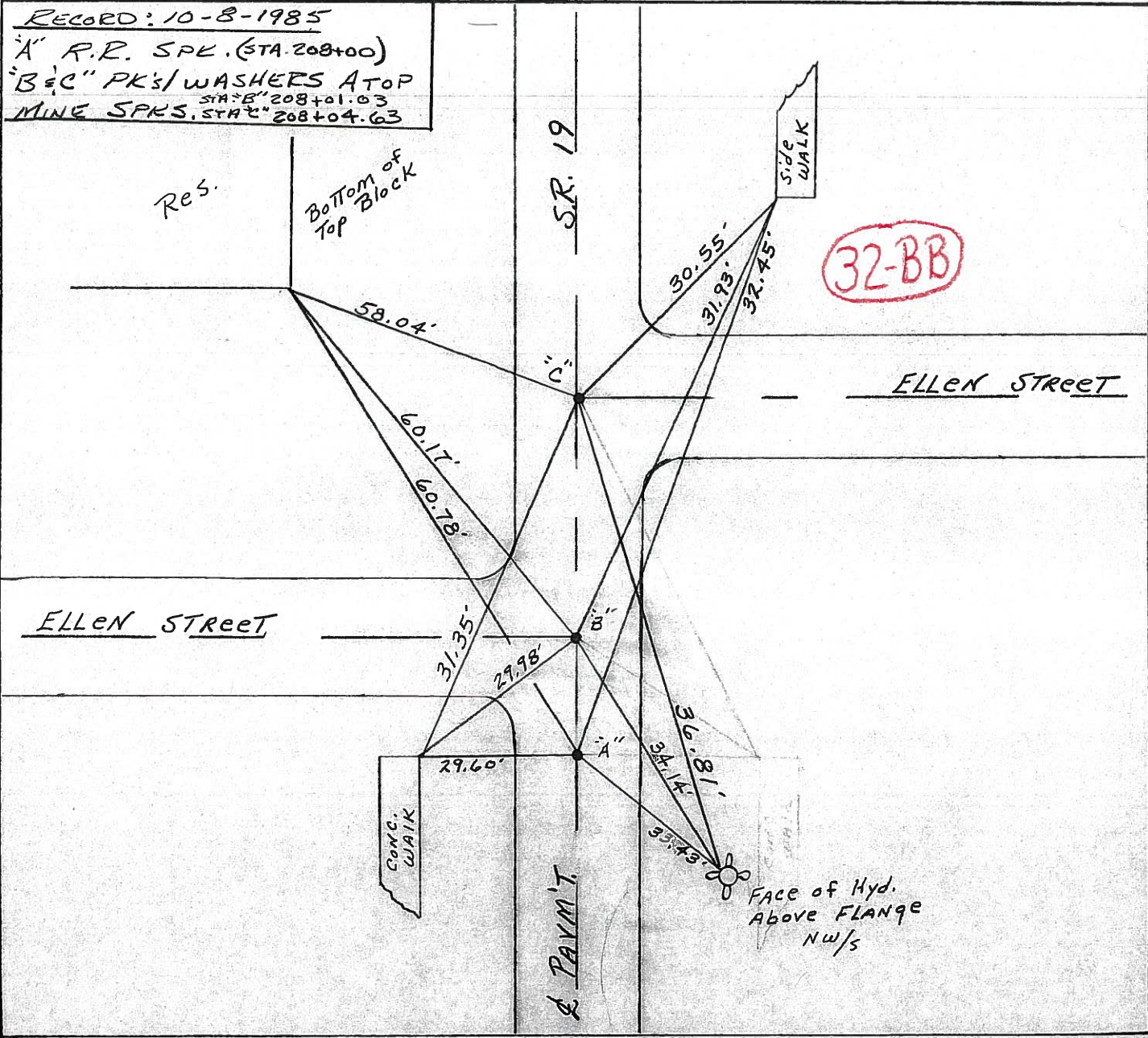
10' TO RT. EDGE PAVEMENT

S.L.M. POT. 207+90 - 207+91 - 207+94

SET PK/WASHERS
 9-28-1992
 J.L.R.



RECORD: 10-8-1985
"A" R.R. SPK. (STA. 208+00)
"B & C" PK's/WASHERS ATOP
MINE SPKS. STA. "B" 208+01.03
STA. "C" 208+04.63



O.D.O.T. DISTRICT 2 SURVEY OFFICE

PERSONNEL

REFERENCE NO. 32

SHEET 37 OF

NOTES CRONIN VAC.

DRAWN 10/22/85

H.C. PIPPLE

DATE 10/18/85

R.C. BARBOUR

WEATHER SONNY

GEYMAN

TEMP. 63°

ROUTE #19

COUNTY SENECA

TOWNSHIP BLOOM

SECTION 15 & 16

T 1 N R 16 E

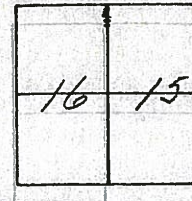
TYPE MONUMENT R.R. spike

ON SURFACE - BELOW 1" BELOW

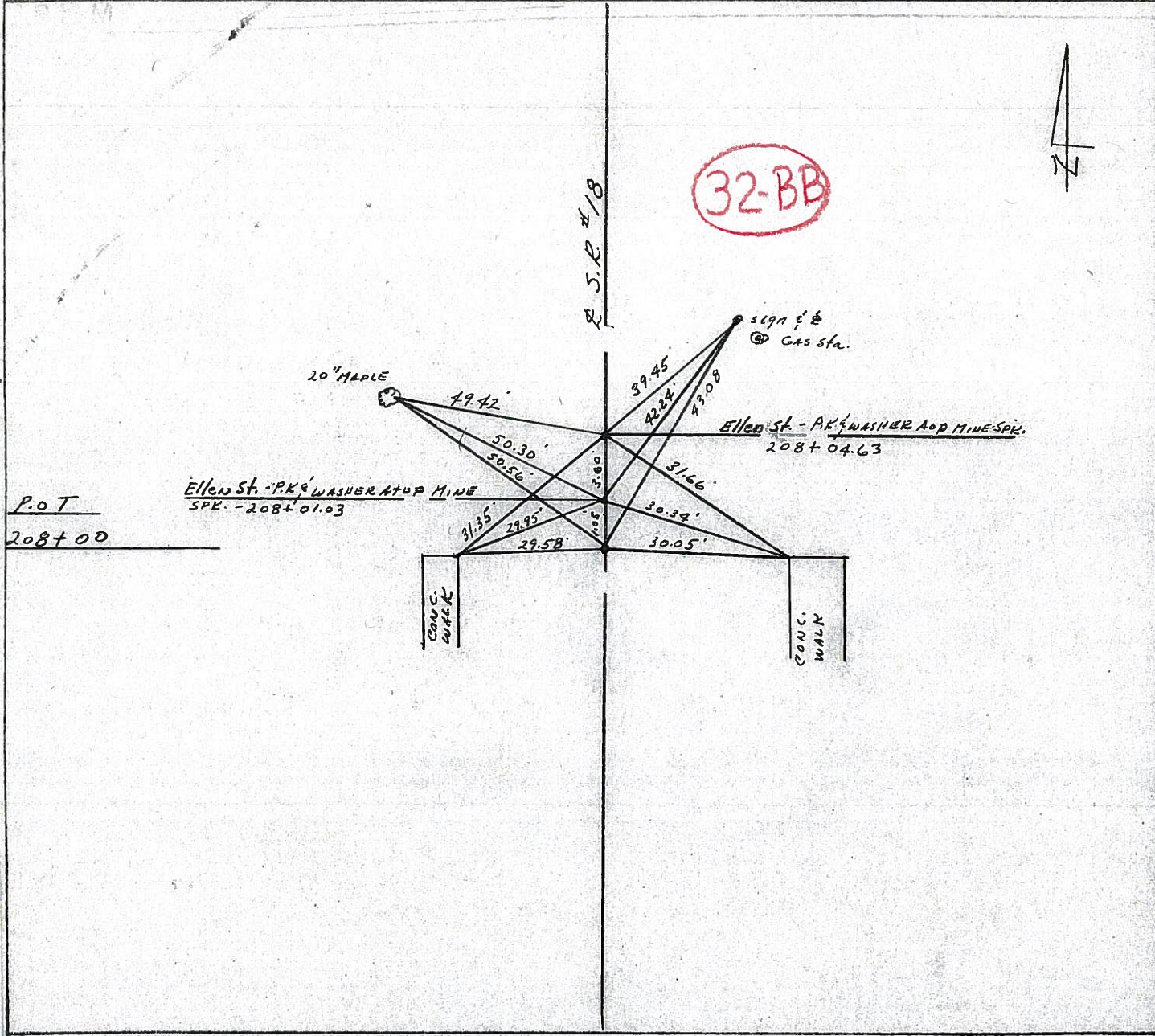
LEFT - ☉ PAV'T. - RIGHT ☉ PAV'T.

TO EDGE PAVEMENT

S.L.M. 208+00



32-BB



P.O.T
208+00

Ellen St. - P.K. WASHER AOP MINE
SPI. - 208+01.03

CONC. WALK

CONC. WALK

County SENECA S.R. 19

Date 7/18/79

Township BLOOM

Weather cloudy

Section Either 15 or 16

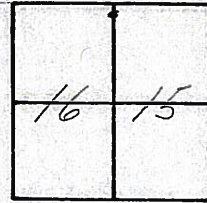
Temp. 69°

T1N, R16E

Personnel Cronin

Ripple

Geyman



~~32~~

32-BB

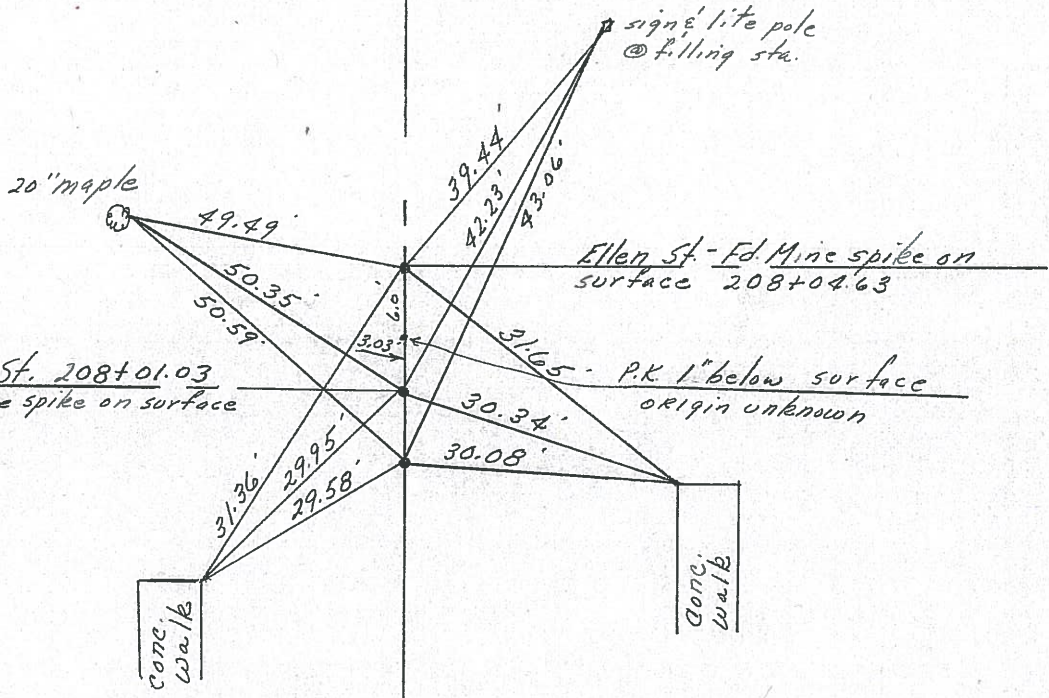


P.O.T. _____
 208+00 S.L.M. _____
 Ed. R.R. spike _____
 on surface _____

Ellen St. 208+01.03
 Ed. mine spike on surface

Ellen St. - Ed. Mine spike on surface 208+04.63

P.K. 1" below surface
 origin unknown



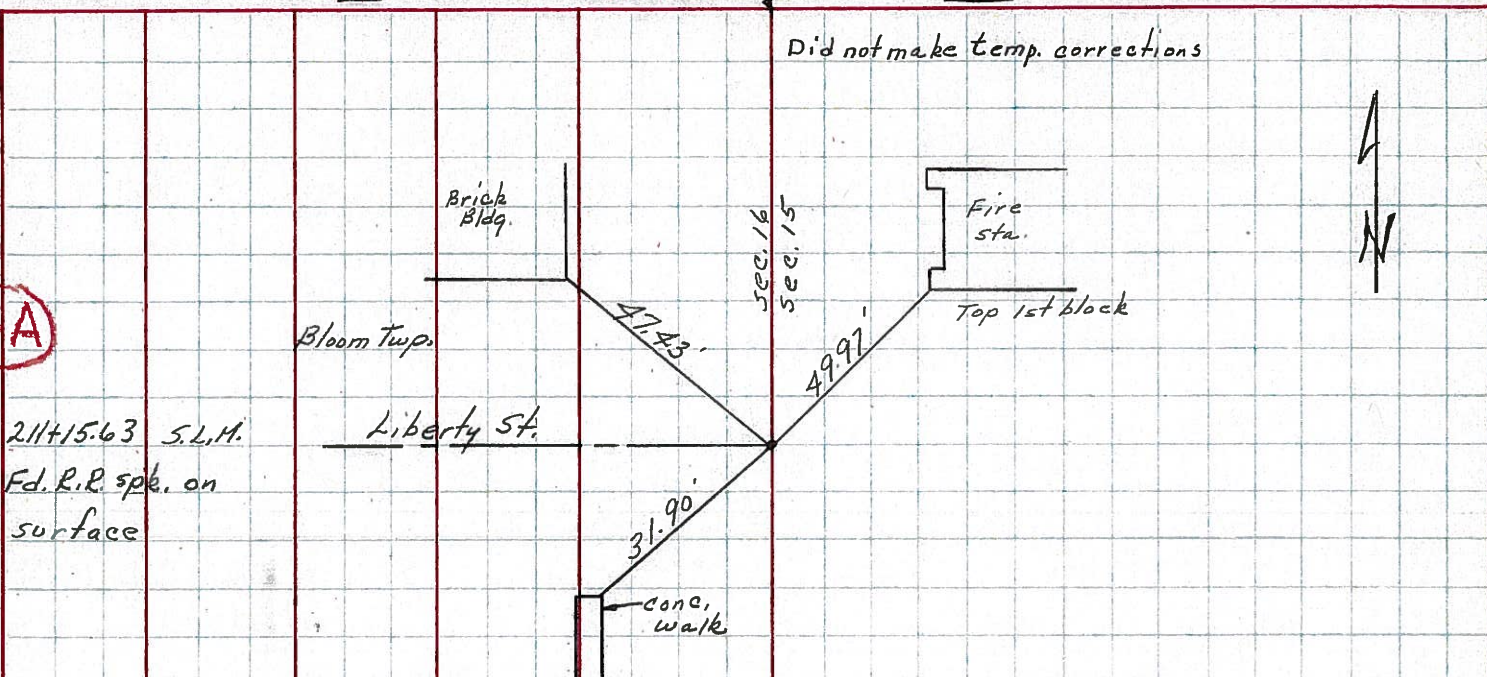
R.S.R. #197

PERSONNEL	TITLE	PERSONNEL	TITLE
Ash			
Cronin			
Ripple			
Anderson			

COUNTY Seneca WEATHER cloudy
S. R. #19 TEMP. 45°
SEC. _____

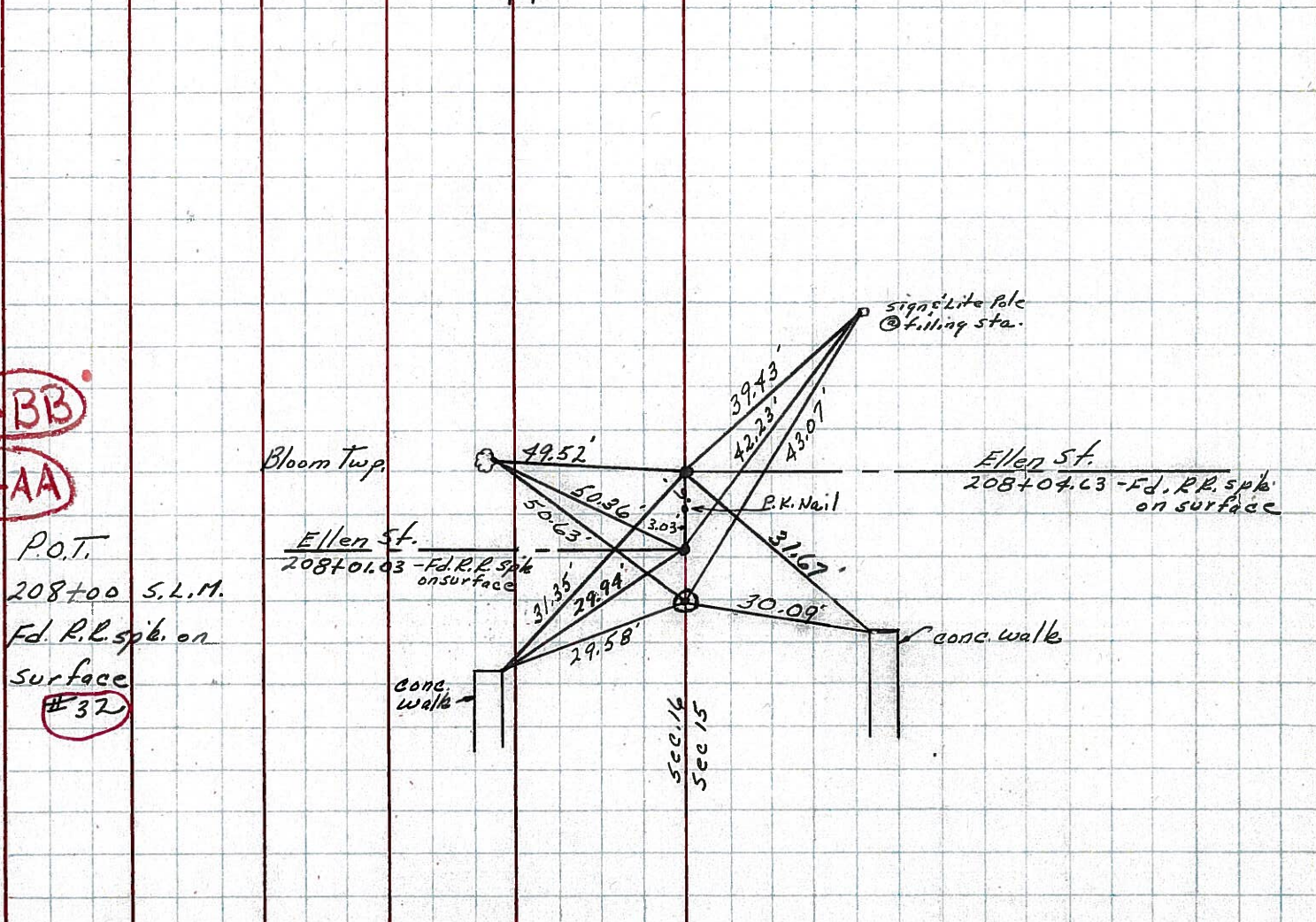
DESCRIPTION Ties for Control Points - Village of Bloomville JOB NO. _____

32-A



32-BB

32-AA



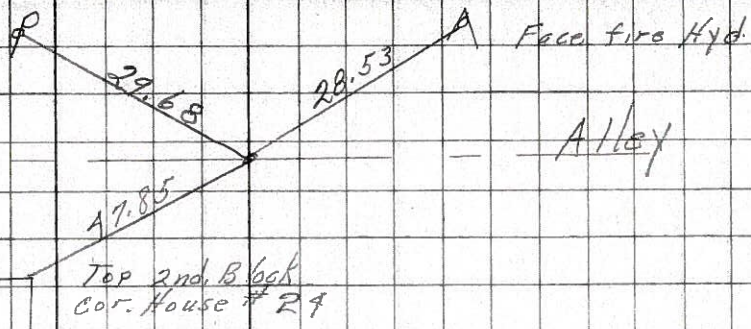
PERSONNEL	TITLE	PERSONNEL	TITLE	COUNTY	DATE	WEATHER	TEMP.
Schneider				Seneca	7-28-69	Fair	75
Mosser				S. R. 19			
Barbour				SEC. Bloomville			
Potts							

DESCRIPTION: Ties for Control Points

33-A

Fd. R. R. spk.

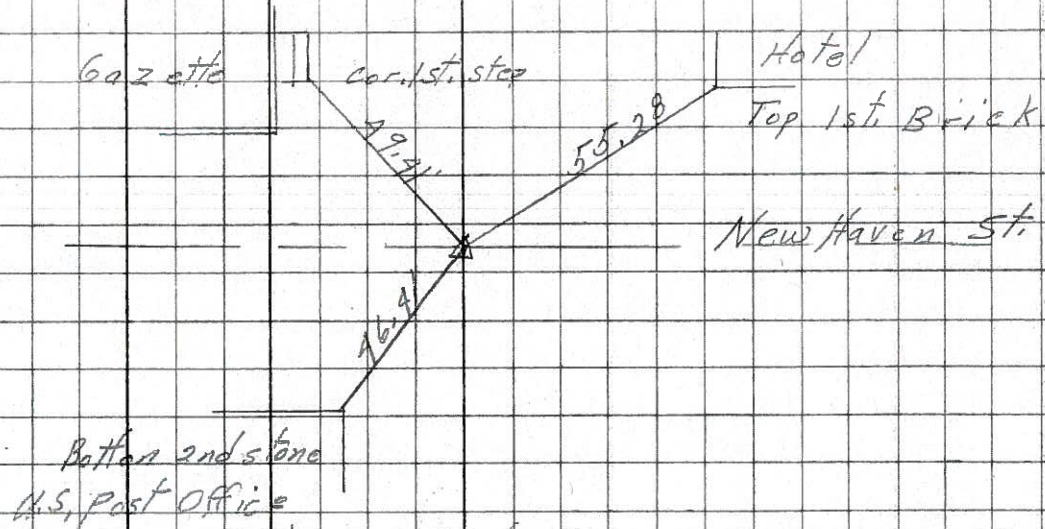
8238



33

Fd. R. R. spk.

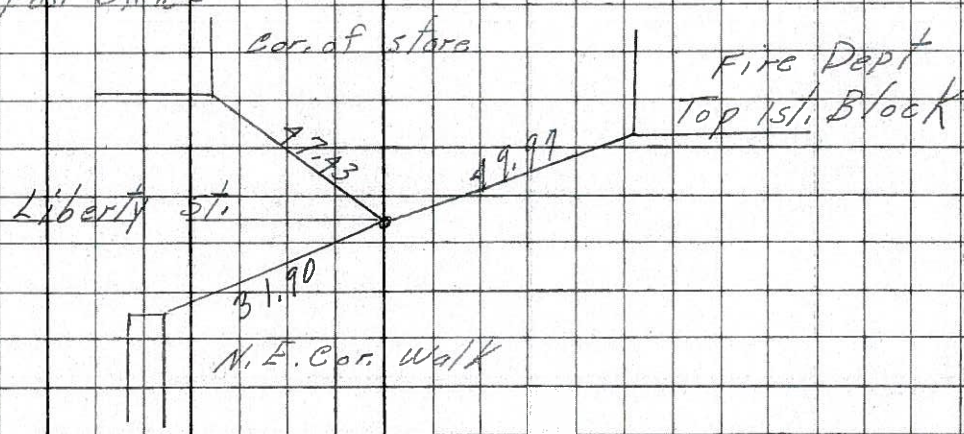
8237



32-A

Fd. R. R. spk.

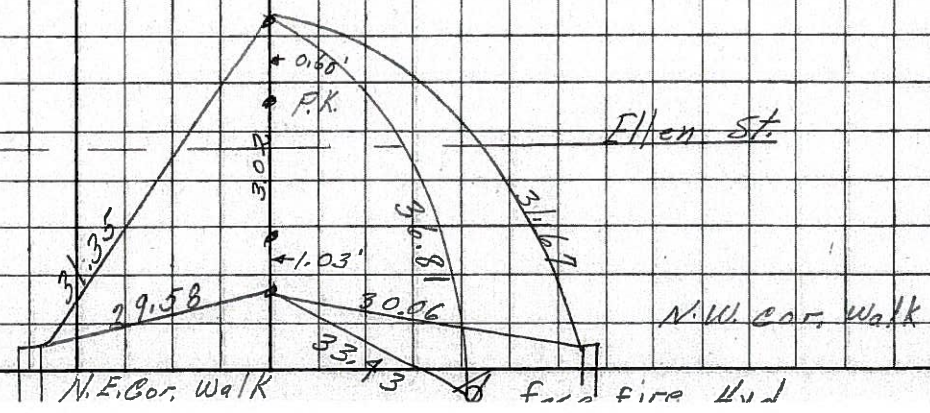
8236



32-BB

Fd. 3-R.R. spks. and P.K. Nail

8235



32-AA

32

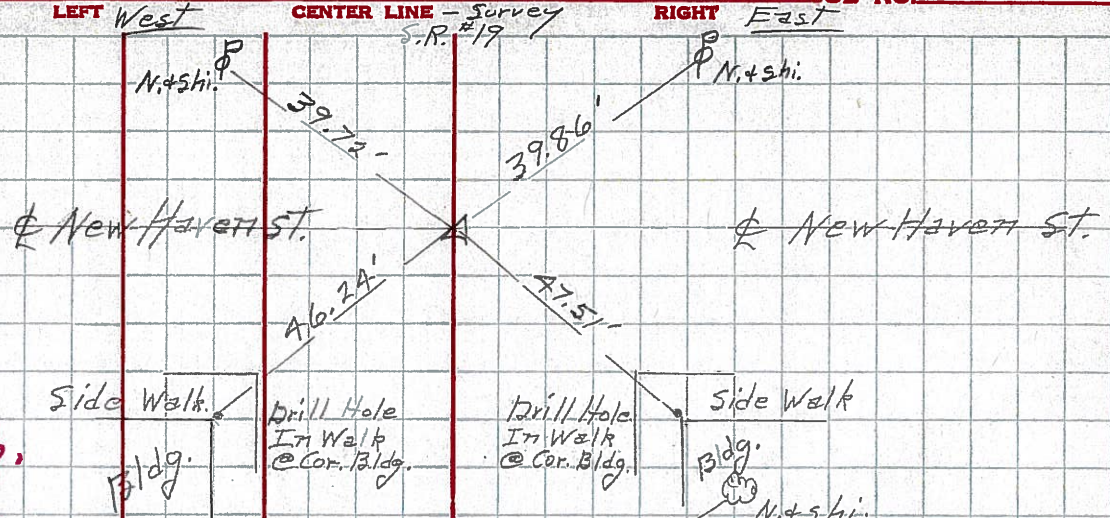
PERSONNEL TITLE PERSONNEL TITLE
 Hsh
 Crow
 DESCRIPTION Control Point & Inter. Ties

COUNTY Seneca DATE Apr. '62
 S. R. #19 Bloomville WEATHER Clear
 SEC. Sen-19 (3.56-4.41) TEMP. 60°
 JOB NO. Const.

33

Set R.R. Spk. 7/26/62

P.T. 214 + 47.61
 Hole in Br. Pavt.
 Inter. S.R. #19 &
 New Haven St.
 A = 0° - 03' Rt.

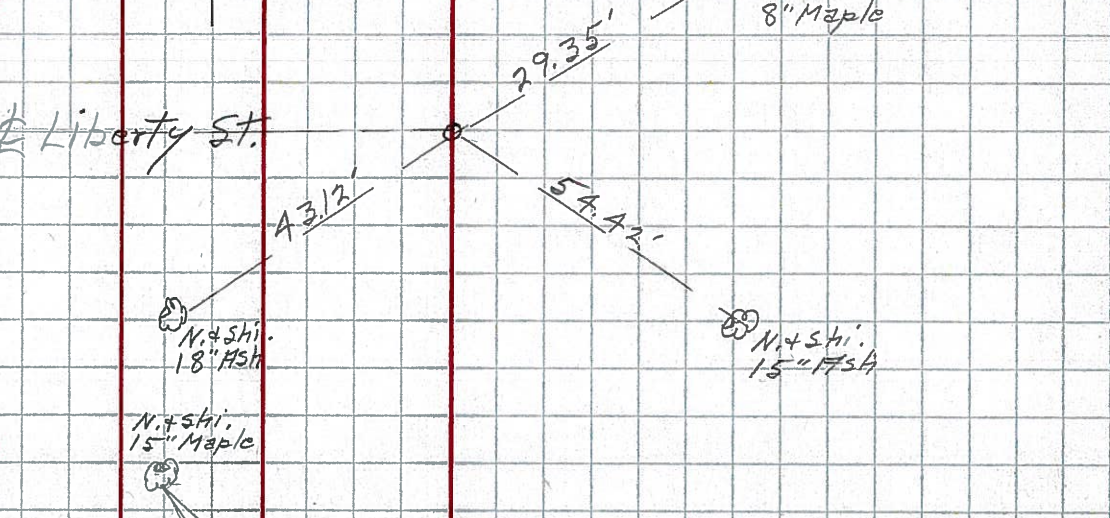


32-A

Set R.R. Spk. 7/26/62

P.O.T. 211 + 15.63
 P.K. Nail

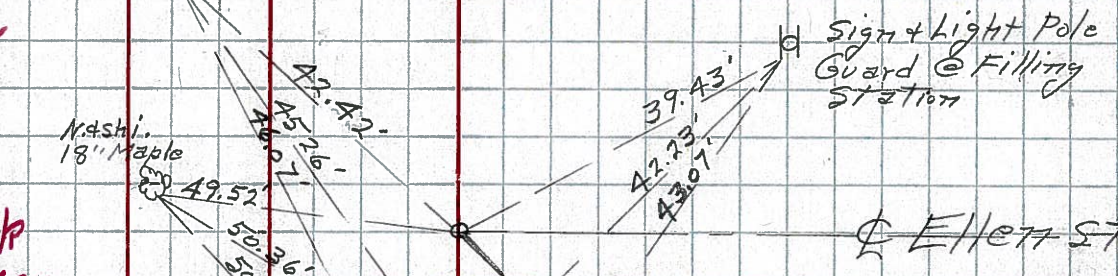
Liberty St.



32-BB

Set R.R. Spk. 7/26/62

P.O.T. 208 + 04.63
 P.K. Nail

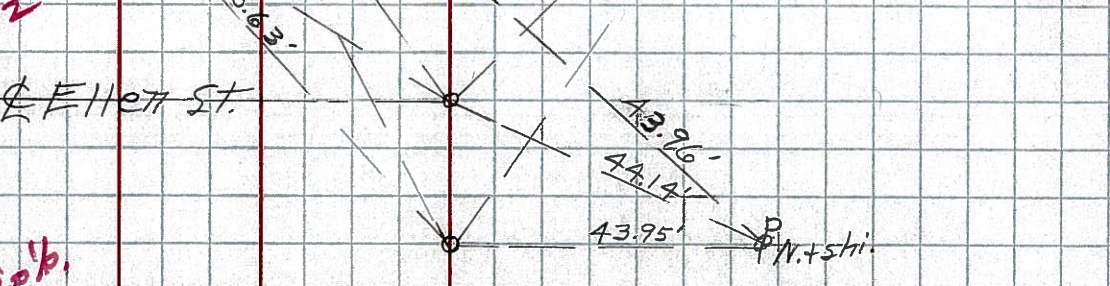


32-AA

Set R.R. Spk. 7/26/62

P.O.T. 208 + 01.03
 P.K. Nail

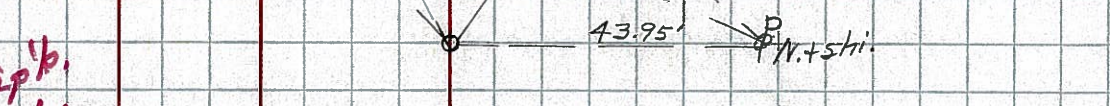
Ellen St.



32

Set R.R. Spk. 7/26/62

P.O.T. 208 + 00
 N. + Shi.



PERSONNEL TITLE PERSONNEL TITLE

COUNTY Seneca DATE Apr. '62

S. R. #19 Bloomville WEATHER Clear

SEC. Sen-19(356-441) TEMP. 60

DESCRIPTION Control Point + Inter. Ties JOB NO. Corset

LEFT West CENTER LINE Survey RIGHT East

33

P.I. 214 + 47.61
Hole in Br. Pavt.
Inter. S.R. #19 +
New Haven St.
A = 0° - 0' RT

New Haven St.

New Haven St.

32-A

P.O.T. 11 + 15.63
P.K. Nail

Liberty St.

32-BB

P.O.T. 208 + 04.63
P.K. Nail

Ellen St.

32-AA

P.O.T. 208 + 01.03
P.K. Nail

Ellen St.

32

P.O.T. 208 + 00
N. + Shi.

N. + Shi.

