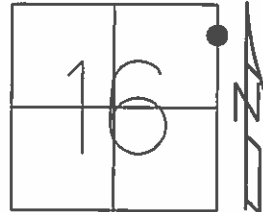


O.D.O.T. DISTRICT 2 SURVEY OFFICE (USE ONLY)

PERSONNEL \_\_\_\_\_ REFERENCE NO. 32 A SHEET 44 OF 64  
 NOTES RHOADES DATE 8-20-15 ROUTE SR 19  
 H.C. O'DONNELL WEATHER FAIR COUNTY SENECA  
 R.C. RHOADES TEMP. 64°F TOWNSHIP BLOOM  
 \_\_\_\_\_ SECTION 16  
 \_\_\_\_\_ T 1 N R 16 E

TYPE MONUMENT PK/WASHER  
 ON SURFACE - ~~BELOW~~ ON \_\_\_\_\_  
 LEFT - ☉ PAV'T - ~~RIGHT~~ 1.0'  
9' TO LT. EDGE PAVEMENT  
 S.L.M. 211+31.78



Grid: Northing: 504836.1881 Easting: 1826365.9748

RECORD STA. 211+15.63  
 PK./WASHER  
 ATOP MINE SPK  
 10-08-85

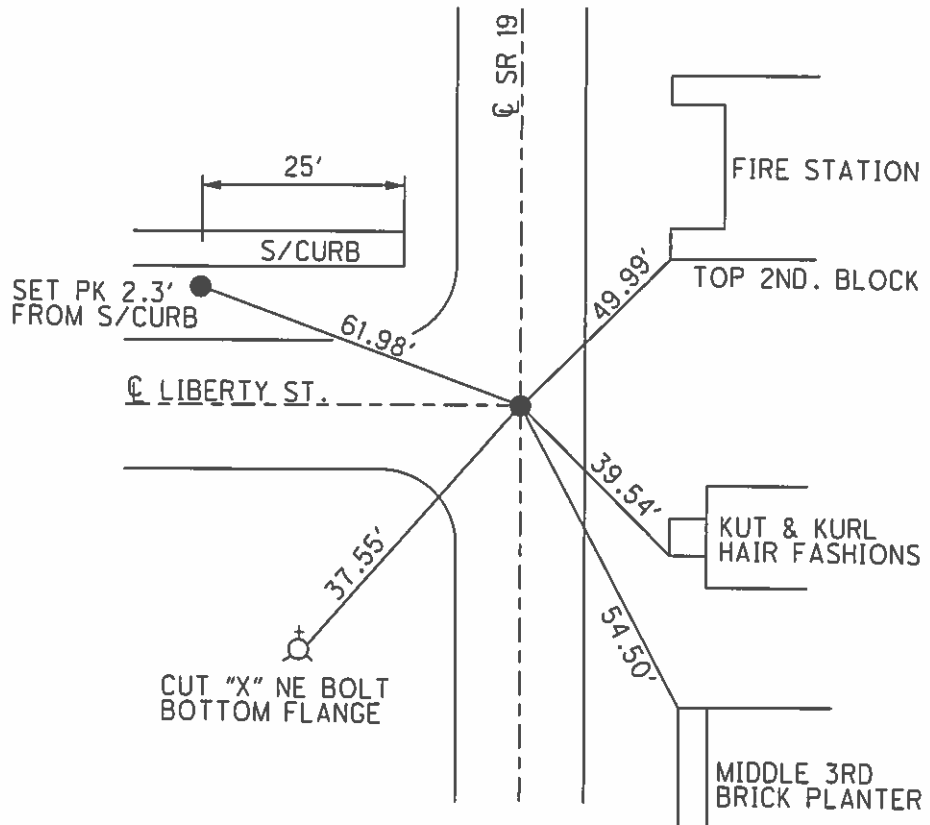
SET PK/WASHER  
 09-28-92, JLR

FD PK/WASHER  
 12-5-13, JMR

FD. PK/WASHER  
 GPS, REFA32  
 01-14-13, EBW

GPS REFA32  
 8-20-15

SET MAG/WASHER  
 GPS, NEWREFA32  
 7-21-16, JFO



O.D.O.T. DISTRICT 2 SURVEY OFFICE (USE ONLY)

PERSONNEL \_\_\_\_\_

REFERENCE NO. 32A

SHEET 44 OF 62

NOTES CANTERBURY

DATE 04-20-06

ROUTE SR 19

H.C. MICKLOVICK

WEATHER FAIR

COUNTY SENECA

R.C. HANKE

TEMP. +70°

TOWNSHIP BLOOM

SECTION 16

T 1 N R 16 E

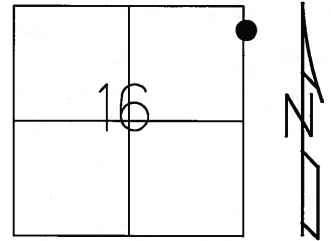
TYPE MONUMENT FD. PK/WASHER

ON SURFACE - ~~BELOW~~ ON SURFACE

LEFT - ~~C PAV'T~~ - RIGHT 1.0' LT.

9' TO LT. EDGE OF CURB

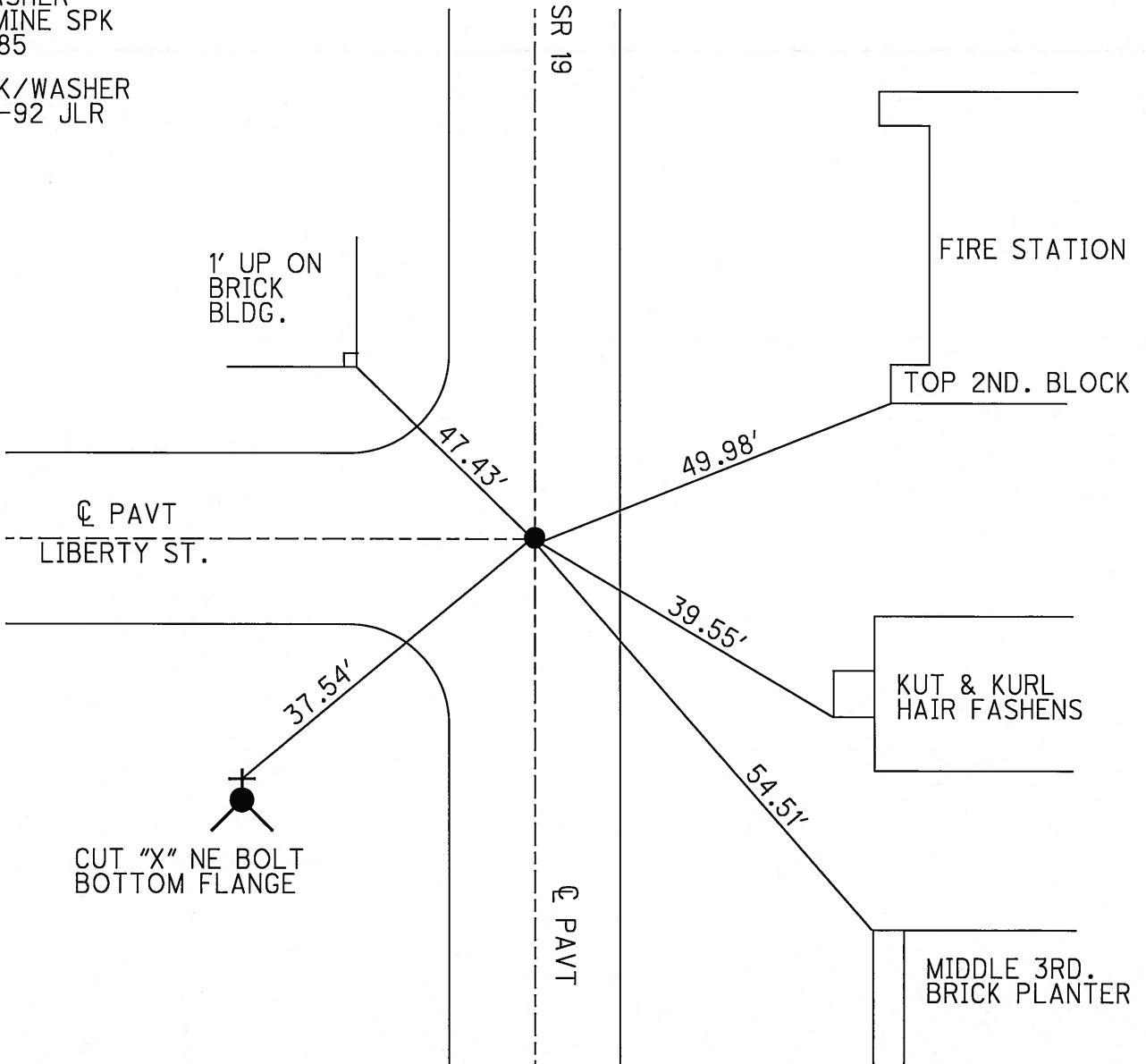
S.L.M. 211+06 (SV44)



Grid: Northing: \_\_\_\_\_ Easting: \_\_\_\_\_

RECORD STA. 211+15.63  
PK./WASHER  
ATOP MINE SPK  
10-08-85

SET PK/WASHER  
09-28-92 JLR



O.D.O.T. DISTRICT 2 SURVEY OFFICE

PERSONNEL

REFERENCE NO. 32-A

SHEET 38 OF 53

NOTES Cheney

H.C. RIPPLE

R.C. BARBOUR

GEYMAN

DATE 6-23-92

WEATHER Cloudy

TEMP. 52°

ROUTE #19

COUNTY Seneca

TOWNSHIP Bloom

SECTION 15 & 16

T. 1 N. R 16 E

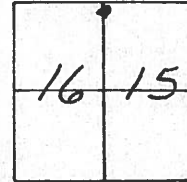
TYPE MONUMENT PK/WASHER

ON SURFACE - ~~BELOW~~ yes

LEFT- & PAV'T. - ~~RIGHT~~ 1'

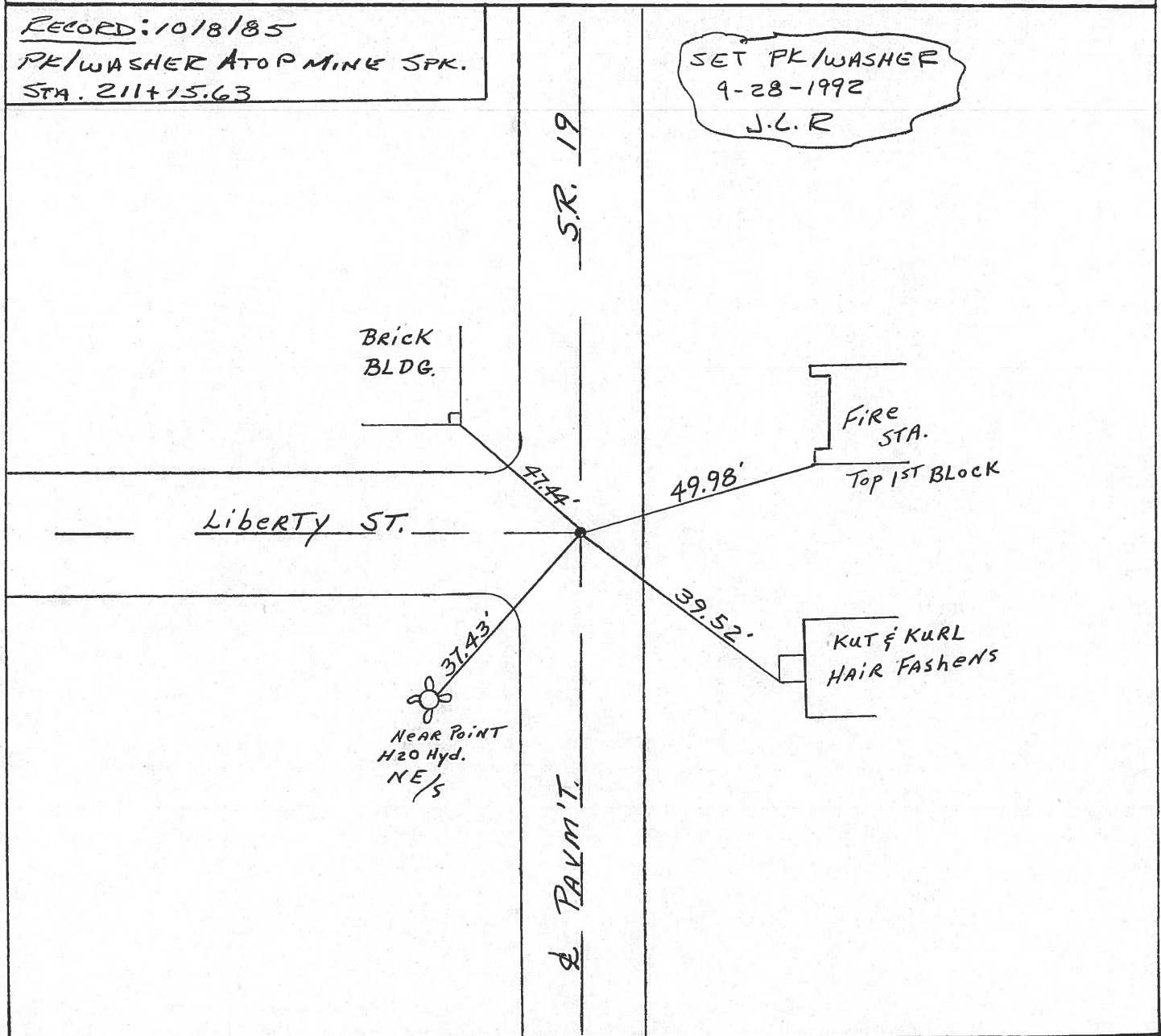
9' TO LT. EDGE PAVEMENT

S.L.M. 211+06



RECORD: 1018185  
PK/WASHER ATOP MINE SPK.  
STA. 211+15.63

SET PK/WASHER  
9-28-1992  
J.L.R



# O.D.O.T. DISTRICT 2 SURVEY OFFICE

PERSONNEL

REFERENCE NO. \_\_\_\_\_

SHEET 38 OF \_\_\_\_\_

NOTES

CROWN VAC

REFERENCE NO. \_\_\_\_\_

DRAWN 10/22/85

SHEET \_\_\_\_\_ OF \_\_\_\_\_

H.C.F.C.

RIPPLE

DATE

10/8/85

ROUTE #19

R.C.

BARBOUR

WEATHER

SUNNY

COUNTY SENECA

GEYMAN

TEMP.

63°

TOWNSHIP BLOOM

SECTION 15 E 16

T 1 N R 16 E

TYPE MONUMENT P.K. & WASHER AT TOP MINE SPIKE

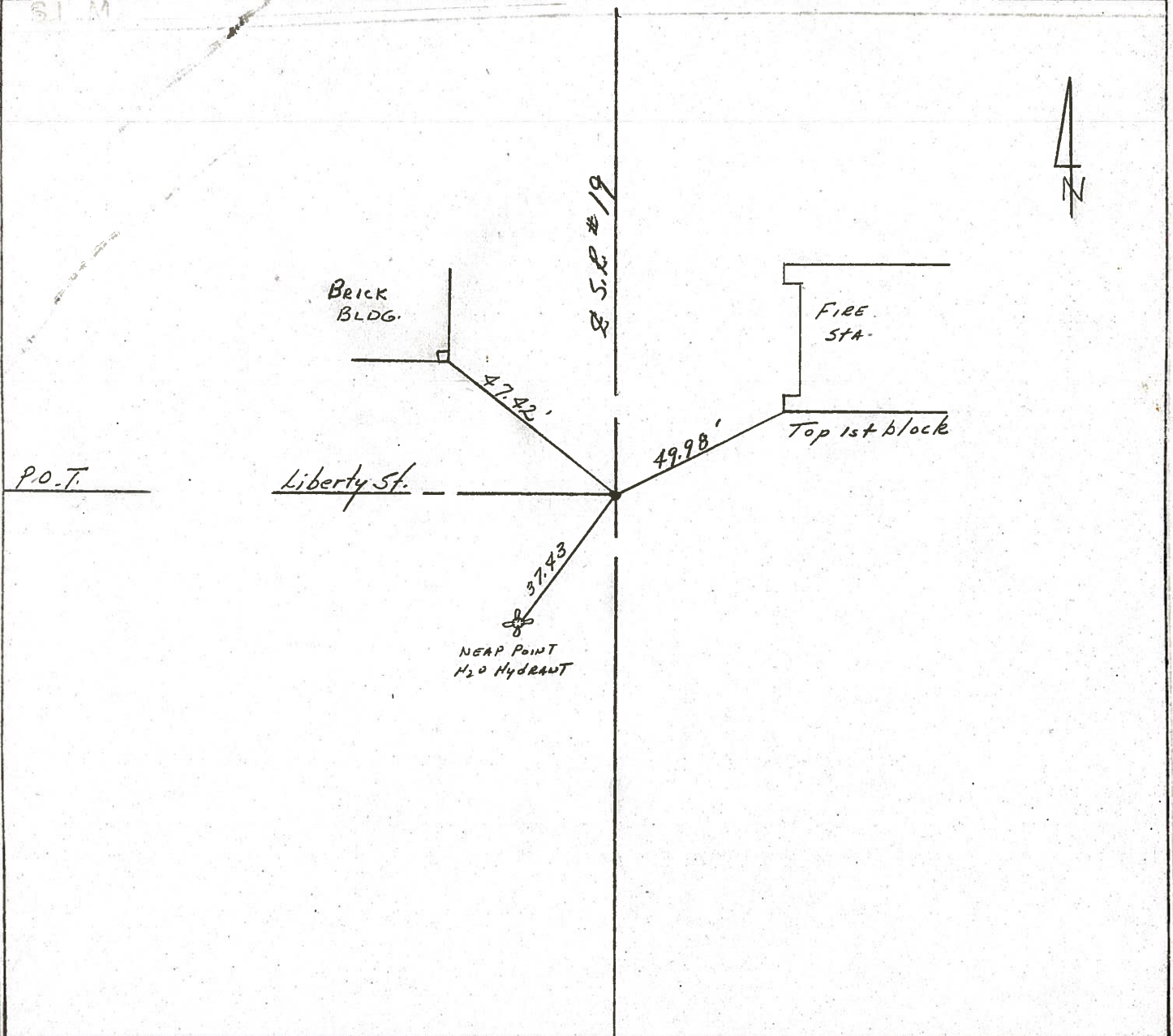
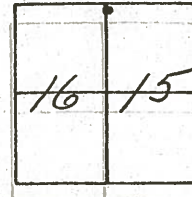
ON SURFACE - ~~BELOW~~ ON SURFACE

LEFT - C PAV'T. - RIGHT E PAV'T.

TO EDGE PAVEMENT

S.L.M. 211 + 15.63

32-A



County SENECA S.R. 19

Date 7/18/79

Township BLOOM

Weather cloudy

Section Either 15 or 16

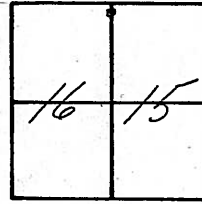
Temp. 69°

T1N, R16E

Personnel Cronin

Ripple

Geyman



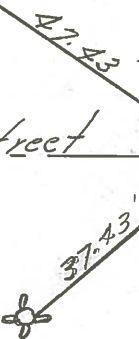
**32-A**



Brick Bldg.

Fire Station  
Top 1st block

Liberty Street



211+15.63 S.L.M.  
Ed. mine spike  
on surface

S.S.R. #19



PERSONNEL TITLE PERSONNEL TITLE

COUNTY Seneca

Ash

Cronin

Ripple

Anderson

S. R. #19

WEATHER cloudy

SEC.

TEMP. 75°

DESCRIPTION Ties for Control Points - Village of Bloomville

JOB NO.

LEFT

CENTER LINE

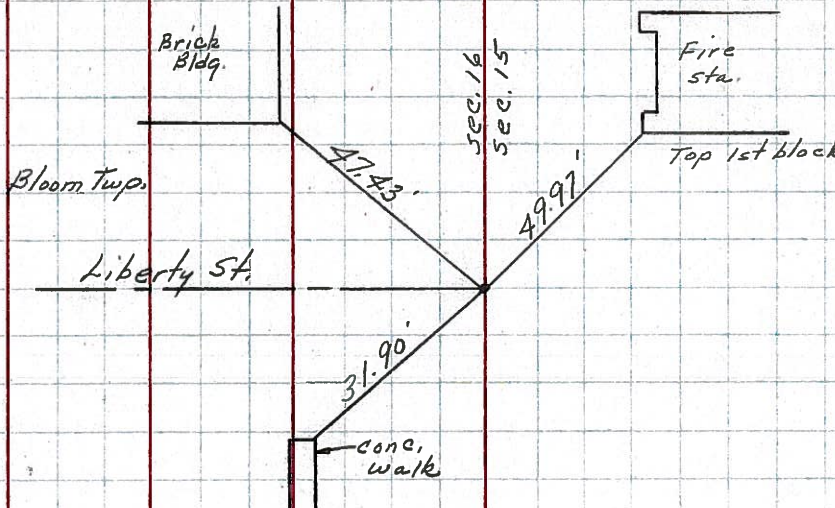
RIGHT

Did not make temp. corrections



32-A

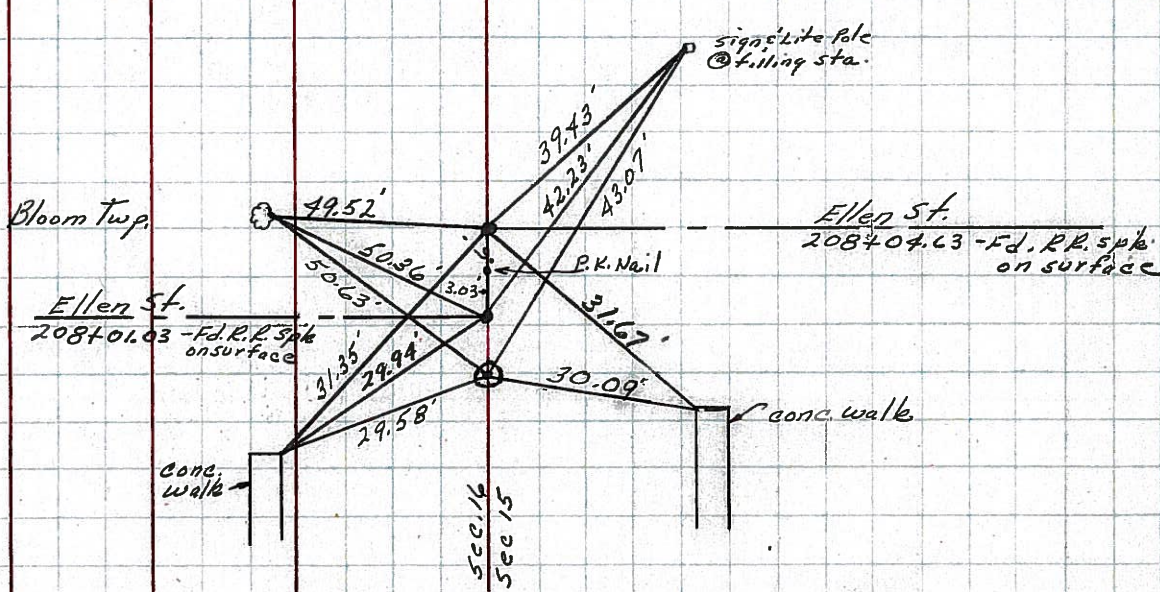
211+15.63 S.L.M.  
Fd. R.R. spike on surface



32-BB

32-AA

P.O.T.  
208+00 S.L.M.  
Fd. R.R. spike on surface



#32

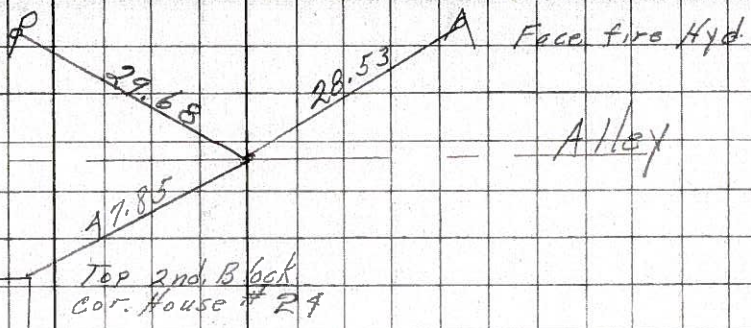


PERSONNEL	TITLE	PERSONNEL	TITLE	COUNTY	DATE
Schneider				Seneca	7-28-69
Mosser				S. R. 19	WEATHER Fair
Barbour				SEC. Bloomville	TEMP. 75
Potts					
DESCRIPTION				Ties for Control Points	
LEFT		CENTER LINE		RIGHT	
				JOB NO.	

33-A

Fd. R. R. spk.

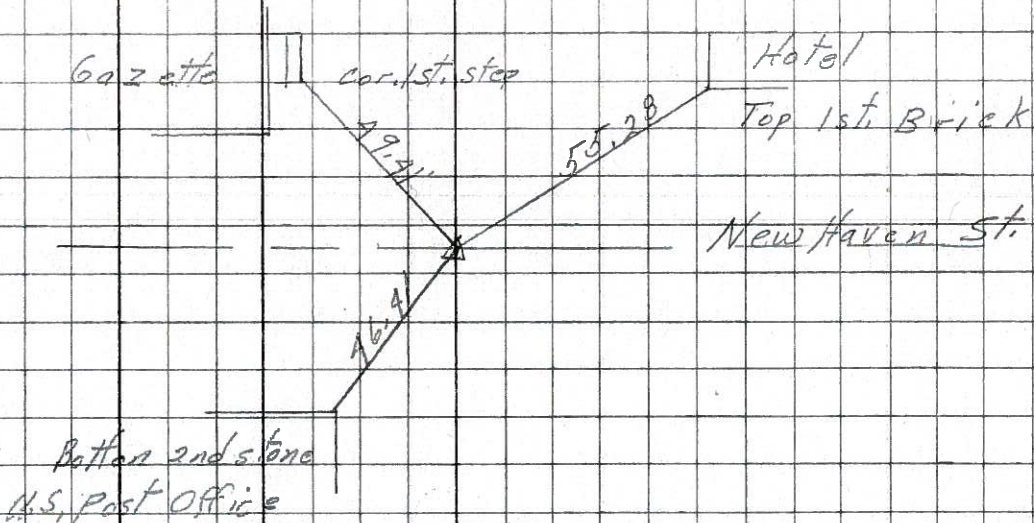
8238



33

Fd. R. R. spk.

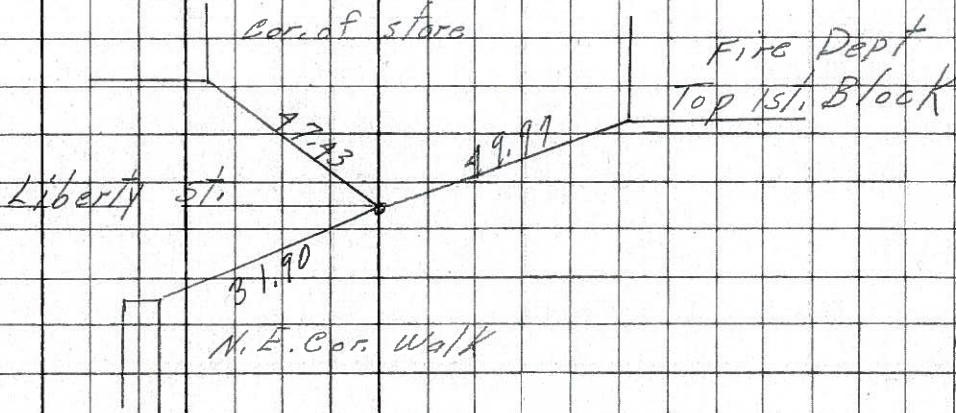
8237



32-A

Fd. R. R. spk.

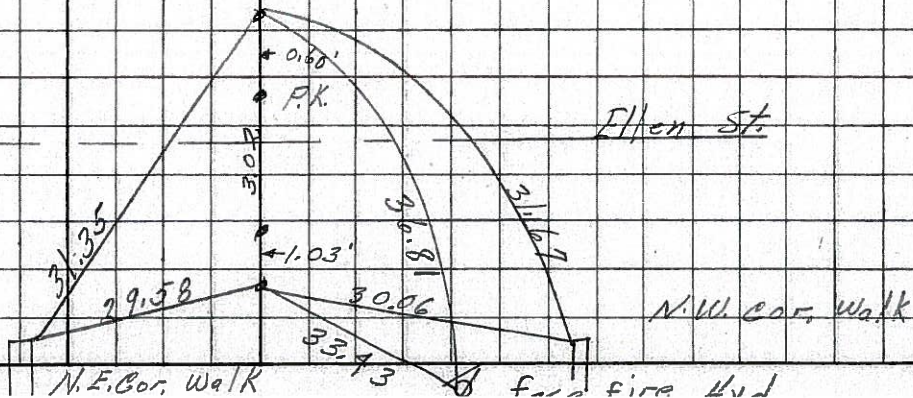
8236



32-BB

Fd. 3-R.R. spk. and P.K. Nail

8235





PERSONNEL TITLE PERSONNEL TITLE

Msh

COUNTY Seneca

DATE Apr. '62

Crow

S. R. #19 Bloomville

WEATHER Clear

SEC. Sen.-19 (3.56-4A)

TEMP 60°

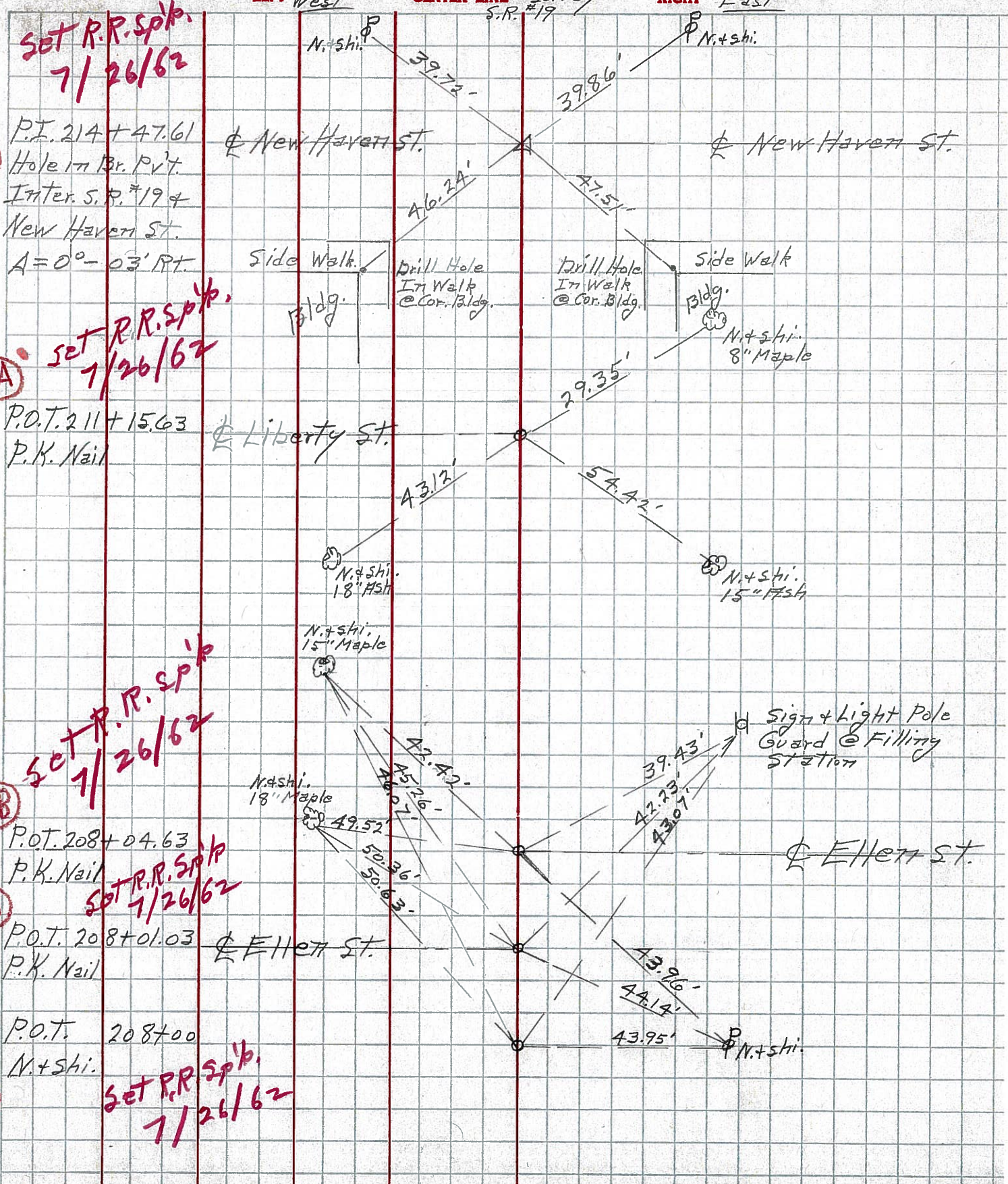
DESCRIPTION Control Point & Inter. Ties

JOB NO. Const.

LEFT West

CENTER LINE - Survey S.R. #19

RIGHT East



33

Set R.R. Spk. 7/26/62

P.I. 214 + 47.61  
Hole in Br. Pvt.  
Inter. S.R. #19 &  
New Haven St.  
A = 0° - 03' Rt.

32-A

Set R.R. Spk. 7/26/62

P.O.T. 211 + 15.63  
P.K. Nail

32-BB

Set R.R. Spk. 7/26/62

P.O.T. 208 + 04.63  
P.K. Nail

32-AA

Set R.R. Spk. 7/26/62

P.O.T. 208 + 01.03  
P.K. Nail

32

Set R.R. Spk. 7/26/62

P.O.T. 208 + 00  
N.+shi.



PERSONNEL TITLE PERSONNEL TITLE

COUNTY Seneca DATE Apr. '62

S. R. #19 Bloortville WEATHER Clear

SEC. Sen-19 (356-441) TEMP. 60°

DESCRIPTION Control Point + Inter. Ties JOB NO. Const.

LEFT West CENTER LINE - Survey S.R. #19 RIGHT EAST

33

P.I. 214 + 47.61  
Hole in Br. P.V.  
Inter. S.R. #19 +  
New Haven St.  
A = 0° - 03' RT

New Haven St.

New Haven St.

32-A

P.O.T. 211 + 15.63  
P.K. Nail

Liberty St.

32-BB

P.O.T. 208 + 04.63  
P.K. Nail

Elletts St.

32-AA

P.O.T. 208 + 01.03  
P.K. Nail

Elletts St.

32

P.O.T. 208 + 00  
N. Shi.

